

Applicant: Motorola, Inc.

Equipment Type: ABZ99FT3038

Index to Photographs

This exhibit contains, on the following nine pages, photographs of this equipment as follows:

EXHIBIT 9A

Top View

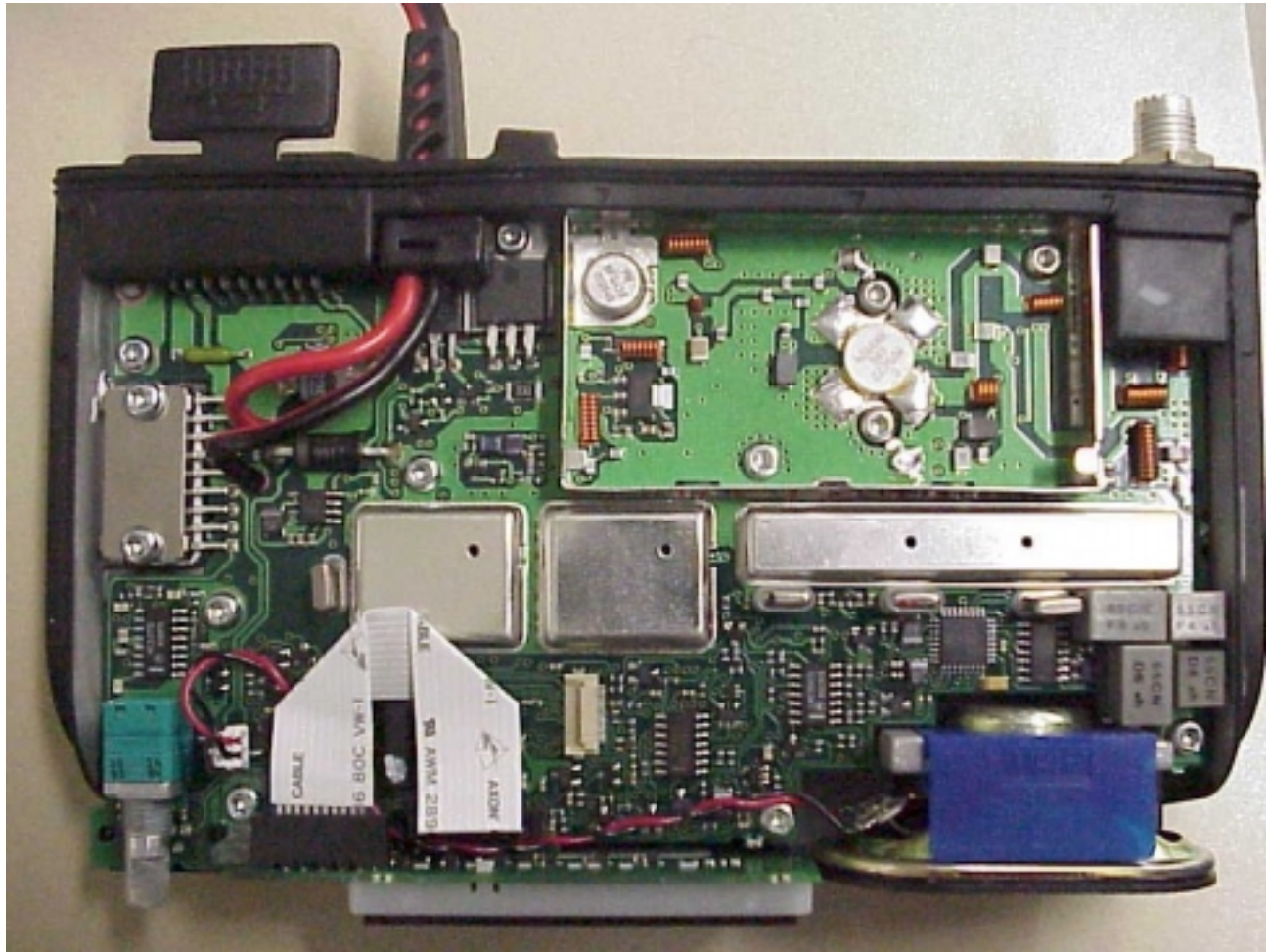
EXHIBIT 9B

Front View

Applicant: Motorola, Inc.

Equipment Type: ABZ99FT3038

INTERNAL PHOTOGRAPHS



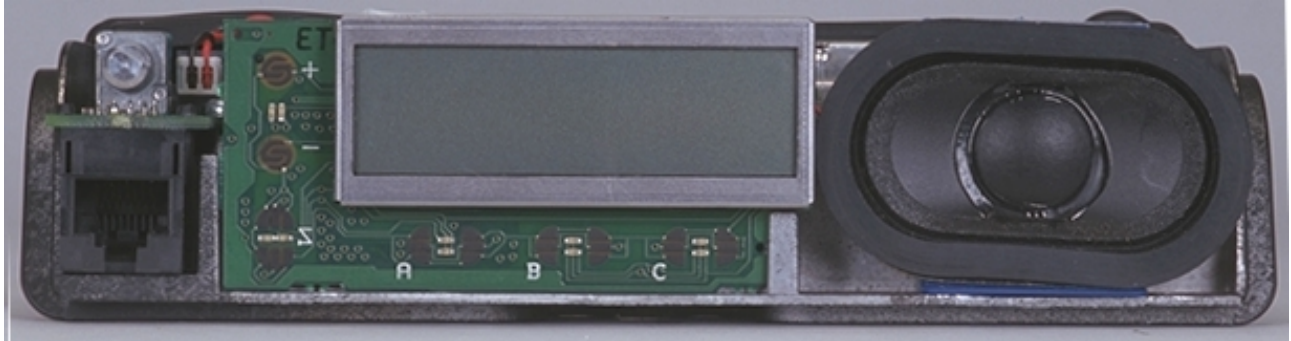
TOP VIEW (Cover and PA shield removed)

EXHIBIT 9A

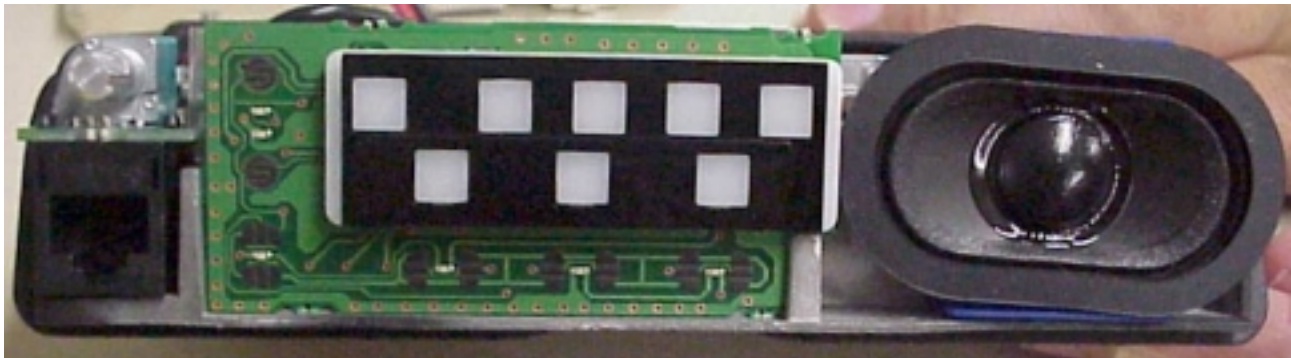
Applicant: Motorola, Inc.

Equipment Type: ABZ99FT3038

INTERNAL PHOTOGRAPHS



24 Channel FRONT VIEW (Cover removed)



4 Channel FRONT VIEW (Cover removed)

EXHIBIT 9B