

PHOTOGRAPHS -- INDEX

<u>EXHIBIT</u>	<u>DESCRIPTION</u>
12A-1	Rear of Station Including Location of the FCC ID Label
12A-2	FCC Identification Label
12B	Linear Simulcast Station Base Radio -- Front View
12C	Exciter Module, Component Side **
12D-1	Power Amplifier Module, Top View, Shields Removed
12D-2	Power Amplifier Module, Heat Sink View
12E-1	Power Supply Module, Cover Removed
12E-2	Power Supply Module, Sub Board Removed **
12E-3	Power Supply Module, Sub Board Top Side
12E-4	Power Supply Module, Sub Board Bottom Side
12F	Base Radio Control Module, Component Side **
12G-1	Backplane Board, Front Side
12G-2	Backplane Board, Back Side

** Indicates that there are no components and/or there is no significant circuitry on the back side of the board, therefore there is not a photo of the back side of the board included in this package.

EQUIPMENT TYPE: ABZ89FC5795



EXHIBIT 12A-1



MOTOROLA

Serial No : 987ABZ6543


Model No : T6374A

Order No : 4808-1243-12345

TX FXX ID: ABZ89FC5795

RX FCC ID : ABZ89FR5796

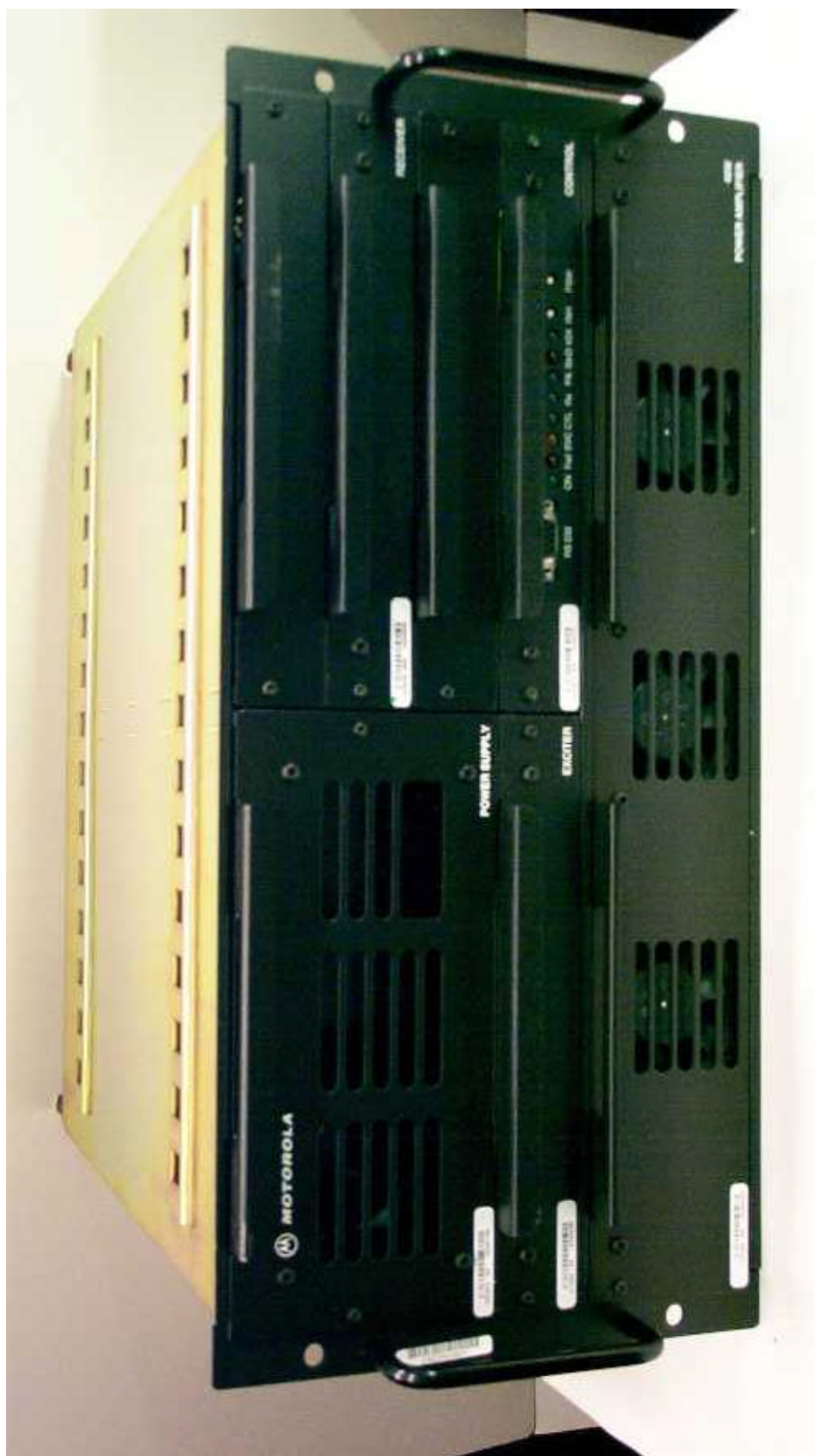
This device complies with Part 15 of the FCC Rules.
Operation is subject to the condition that this device does
not cause harmful interference.

DC Rating: -48V  18A

FCC Identification Label

APPLICANT: MOTOROLA INC.

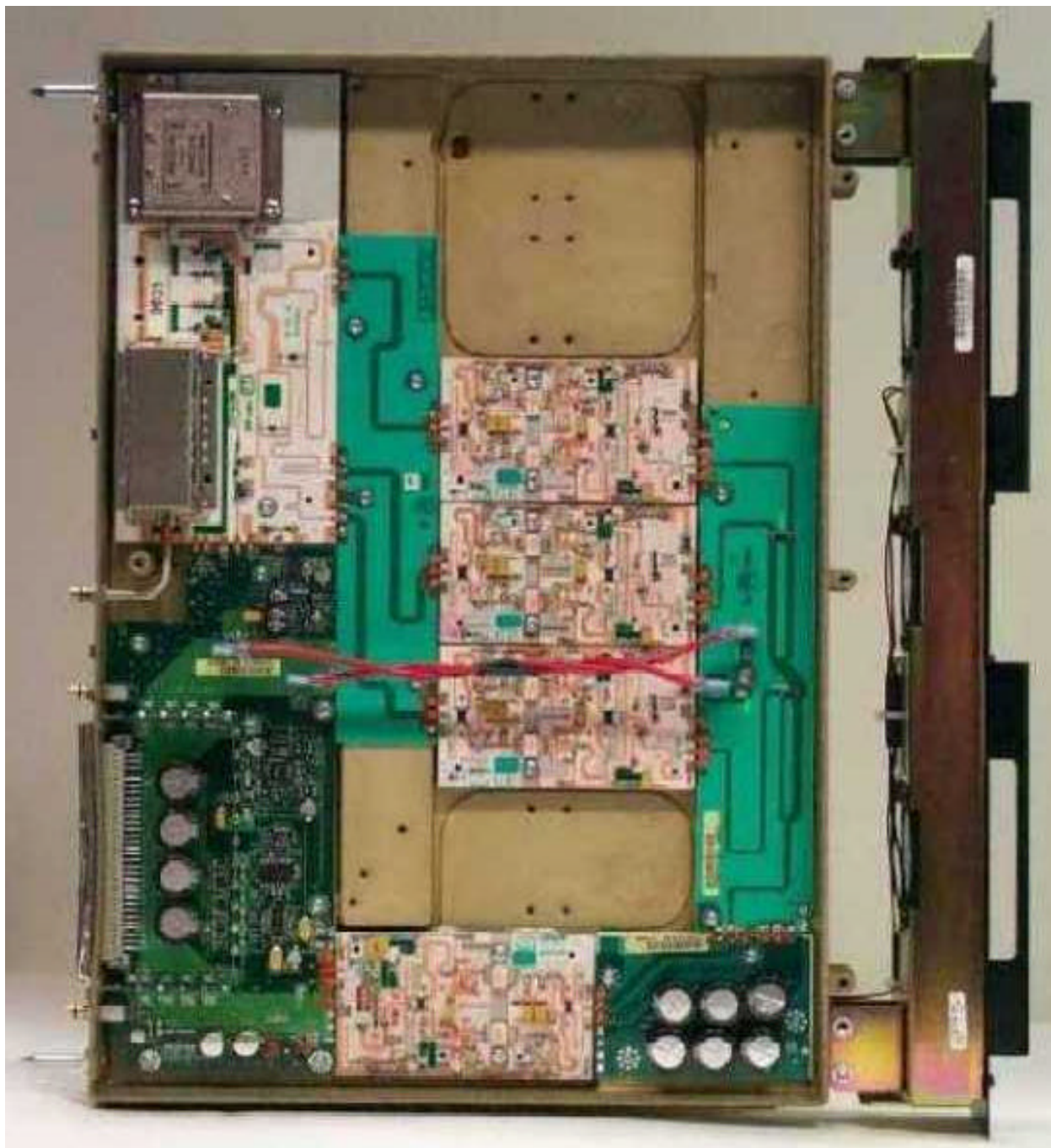
EQUIPMENT TYPE: ABZ89FC5795



Linear Simulcast Station Base Radio -- Front View



Exciter Module, Component Side



Power Amplifier Module, Top View, Shields Removed



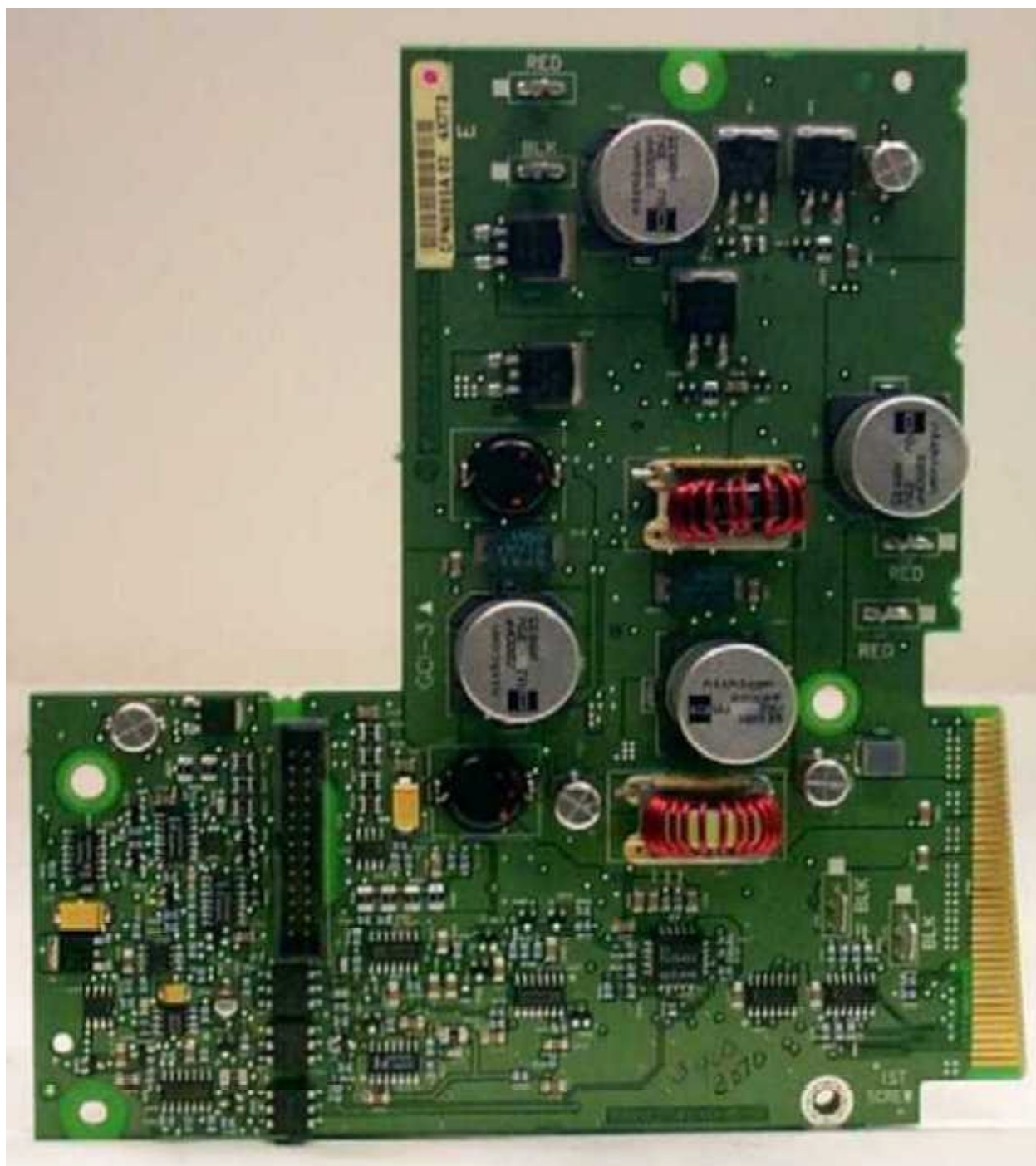
Power Amplifier Module, Heat Sink View



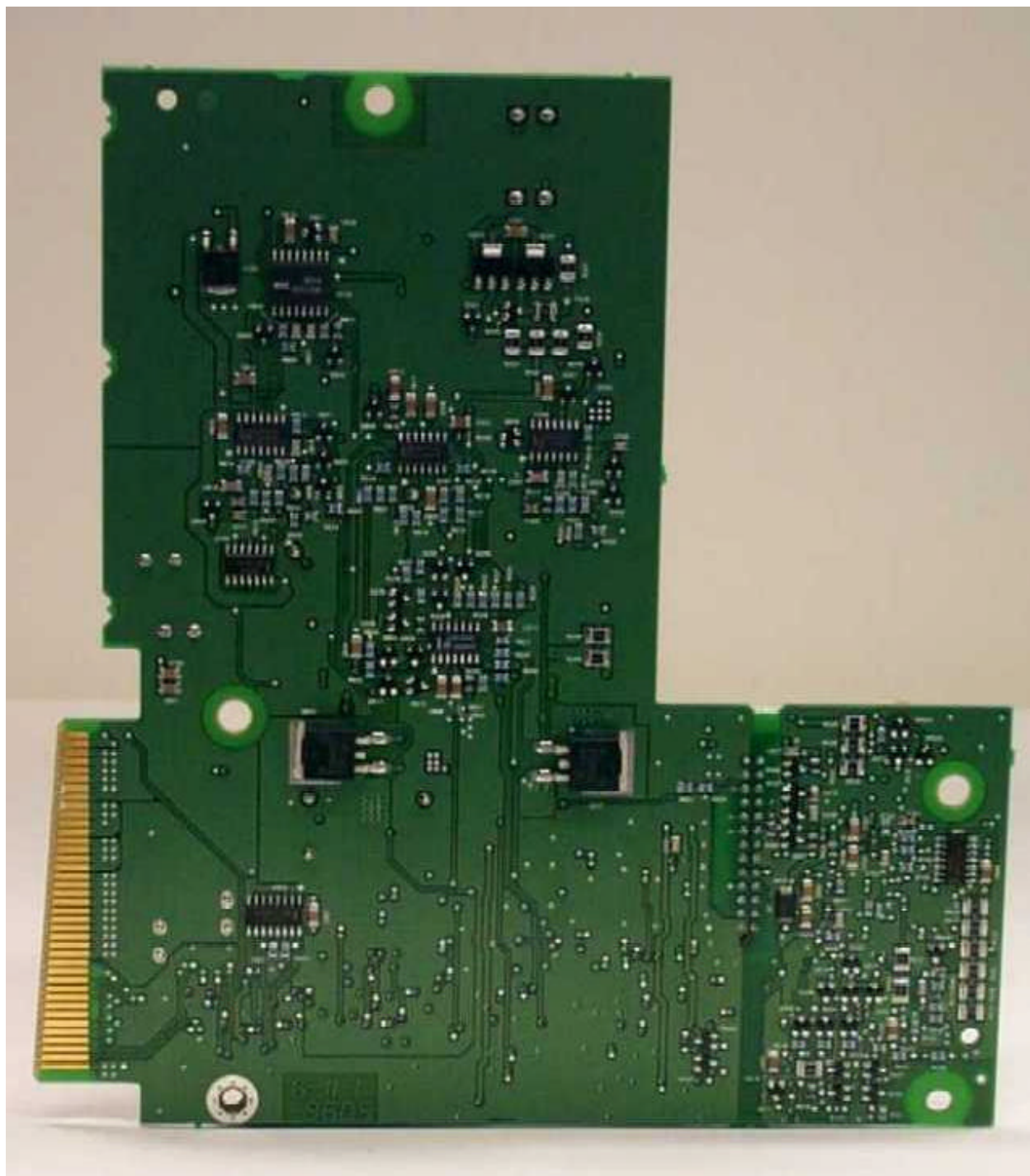
Power Supply Module, Cover Removed



Power Supply Module, Component Side, Sub Board Removed



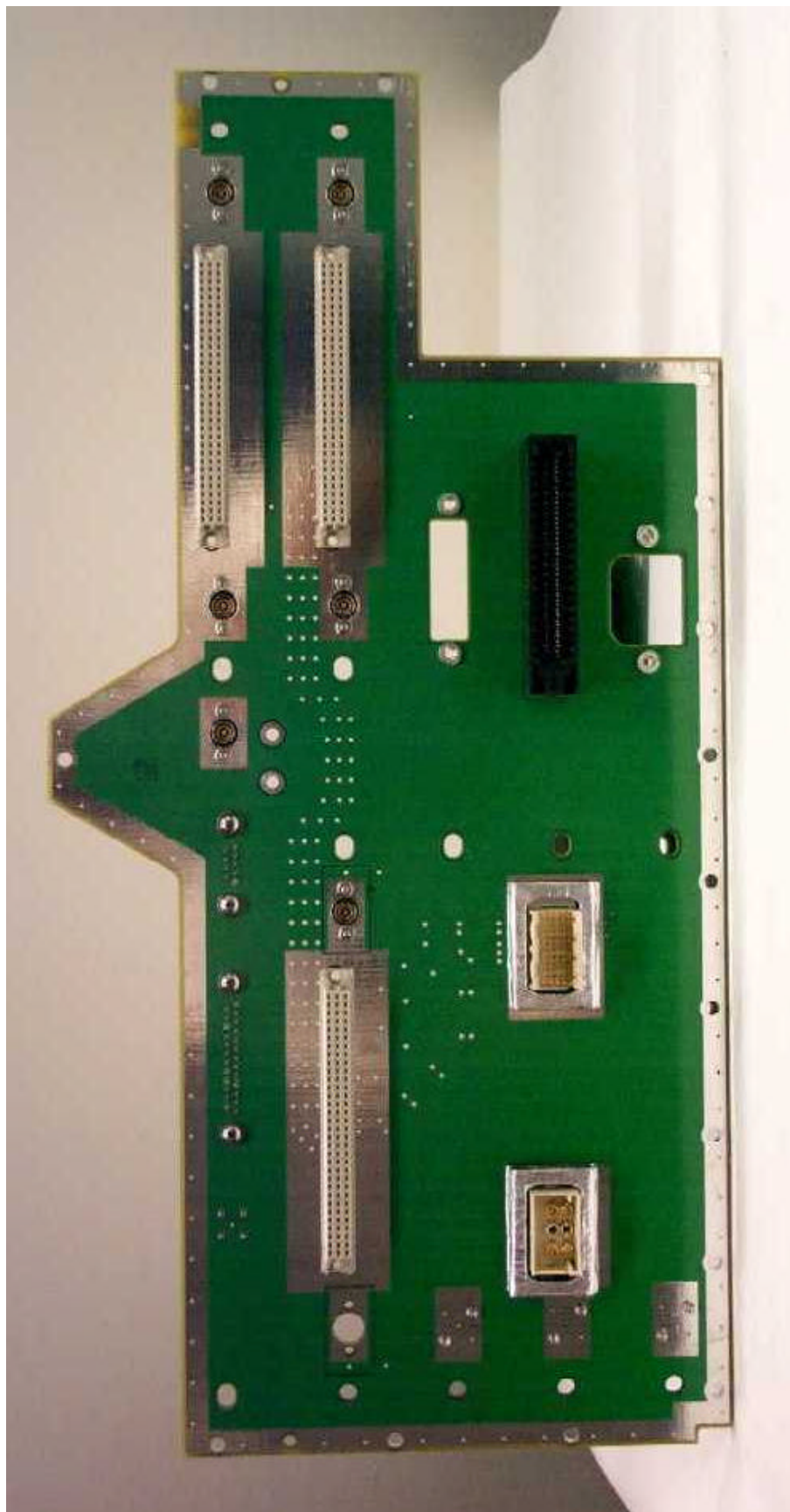
Power Supply Module, Sub Board Top Side



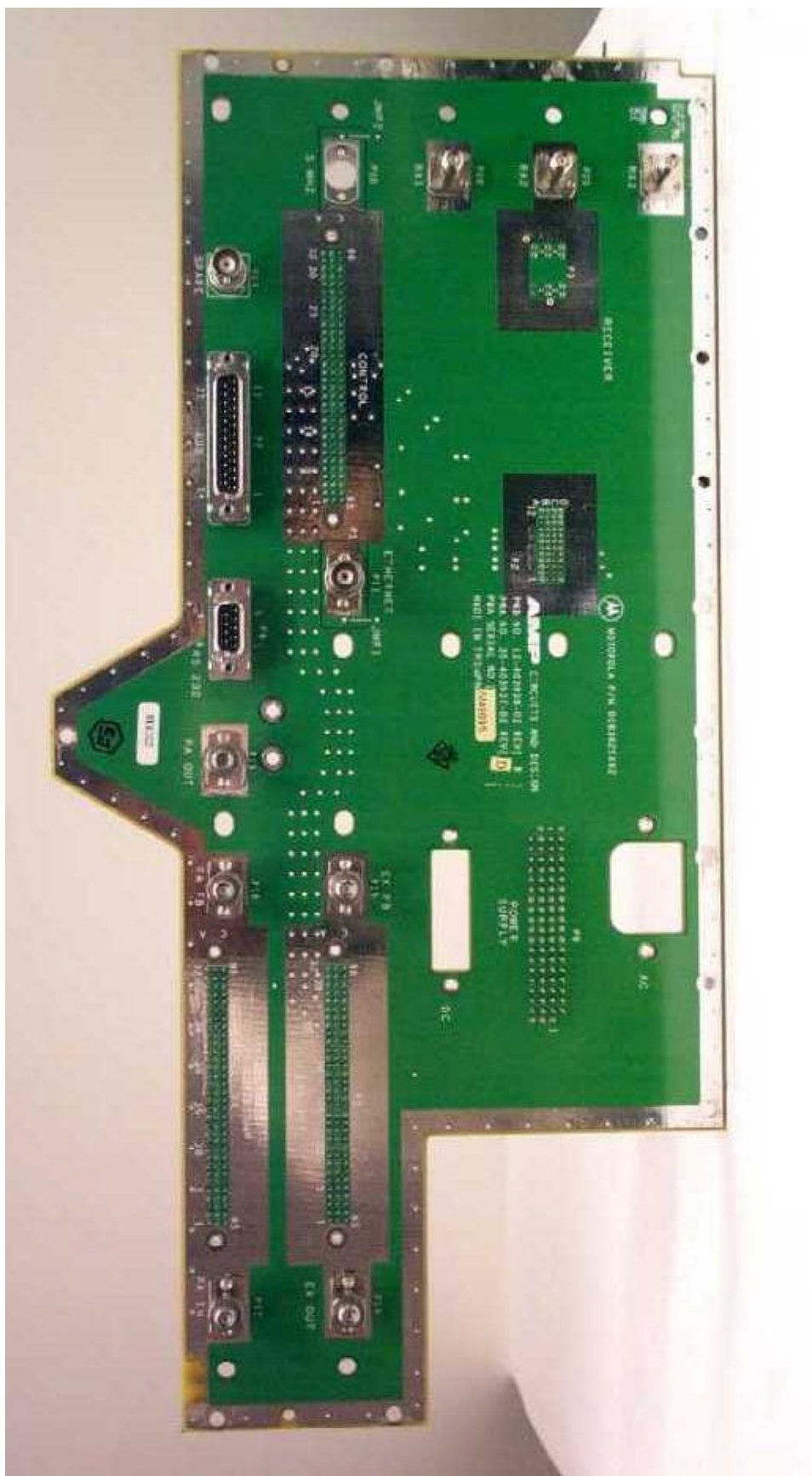
Power Supply Module, Sub Board Bottom Side



Base Radio Control Module, Component Side



Backplane Board, Front Side



Backplane Board, Back Side