

Z2081

Sector Panel Antenna



The Z2081 sector panel antenna covers the 2.4 GHz ISM band and is designed for use in sectorized WISP applications using a single sector or multiple sector antennas and multiple radios. It offers cost conscious WISPs and systems engineers an alternative to wall mounted omnidirectional antennas that can be susceptible to multipath interference and reduced coverage caused by wall-obstructed radiated signals. The Z2081 is ideal for use in apartment complexes, offices, medical facilities, schools, industrial parks and shopping centers.

General Specifications:

2.4 GHz sector panel antennas

Radome Material:

UV resistant ASA plastic

Termination:

18" LMR195 cable with reverse polarity N female jack

Polarization:

Vertical

Lighting Protection:

DC grounded

Mounting Method:

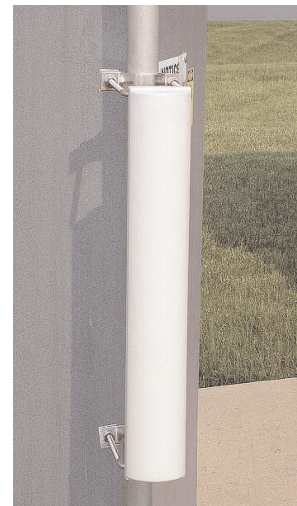
Adjustable steel bracket, +/- 11 degrees of uptilt or downtilt
Pipe diameter: 0.75 thru 2.4" OD (19-60 mm)

Nominal Impedance:

50 Ohms

VSWR:

<1.5:1



Z2081

Feature and Benefits

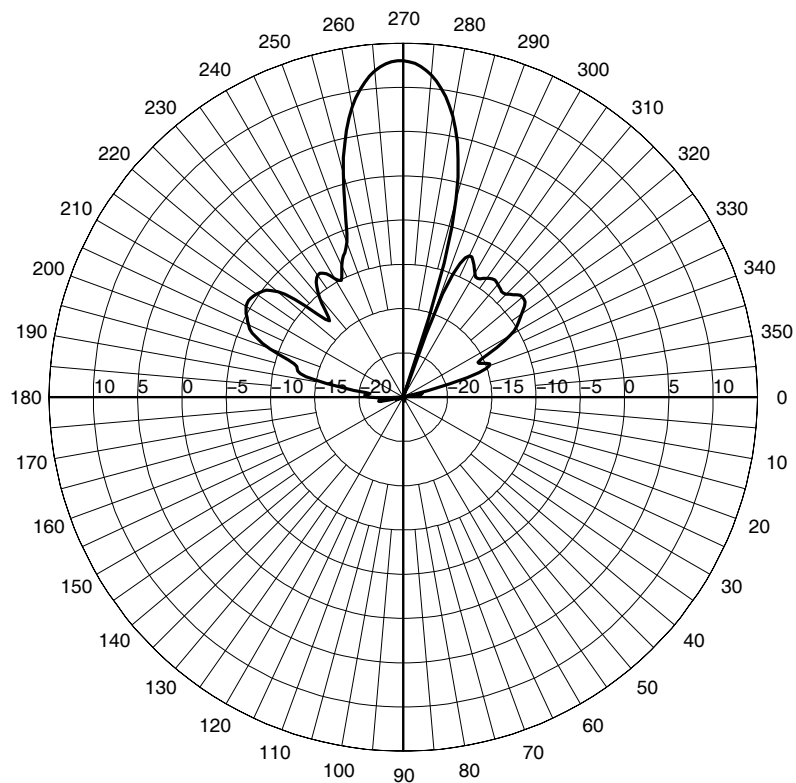
- Industry leading front-to-back ratio ensures that the radiated energy is focused towards its target, and not to the back or sides of the antennas.
- Attractive, streamline design reduces wind loading for easier handling during installation.

Electrical Specifications

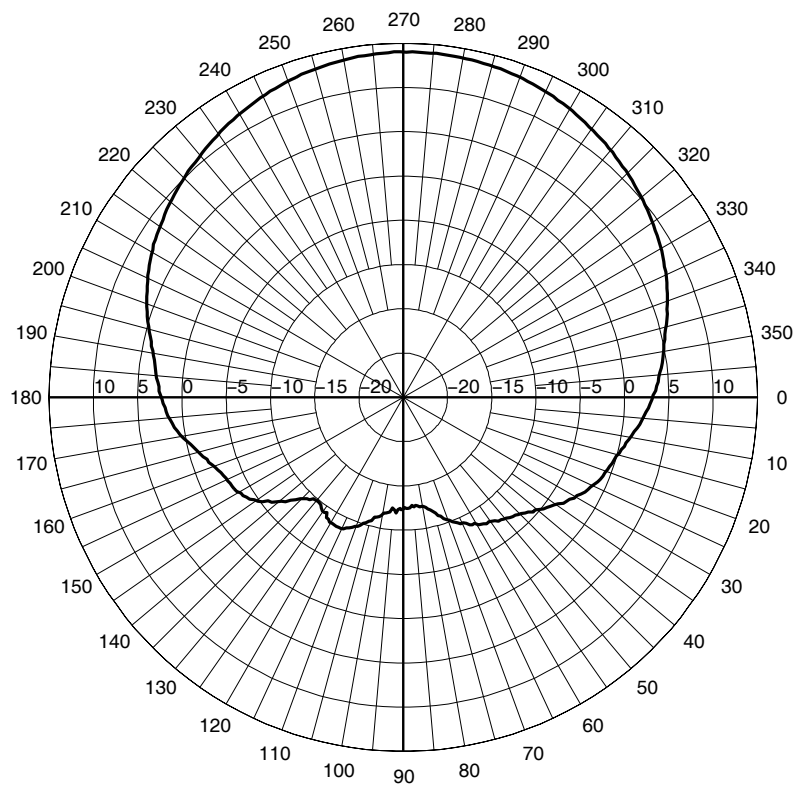
Model #	Frequency Range	Nominal Gain	Front-to-Back Ratio	Horizontal Plane Beamwidth	E-Plane Beamwidth
Z2081	2400-2485 MHz	14 dBi	23 dB	90°	14°

Mechanical Specifications

Model #	Wind Survival	Dimensions	Weight	Cable
Z2081	125 mph	19.8" L x 3.1" W x 1.5" D	2.5 lbs.	18" LMR195 PVC, Black



Z2081 Elevation Cut



Z2081 Azimuth Cut