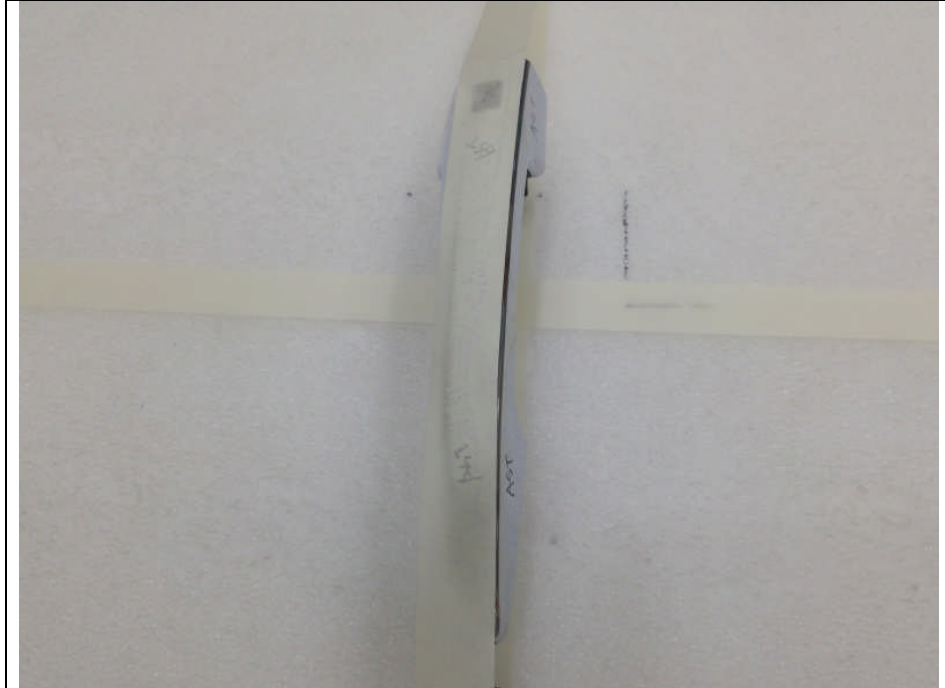


# **Test setup photos of EUT**

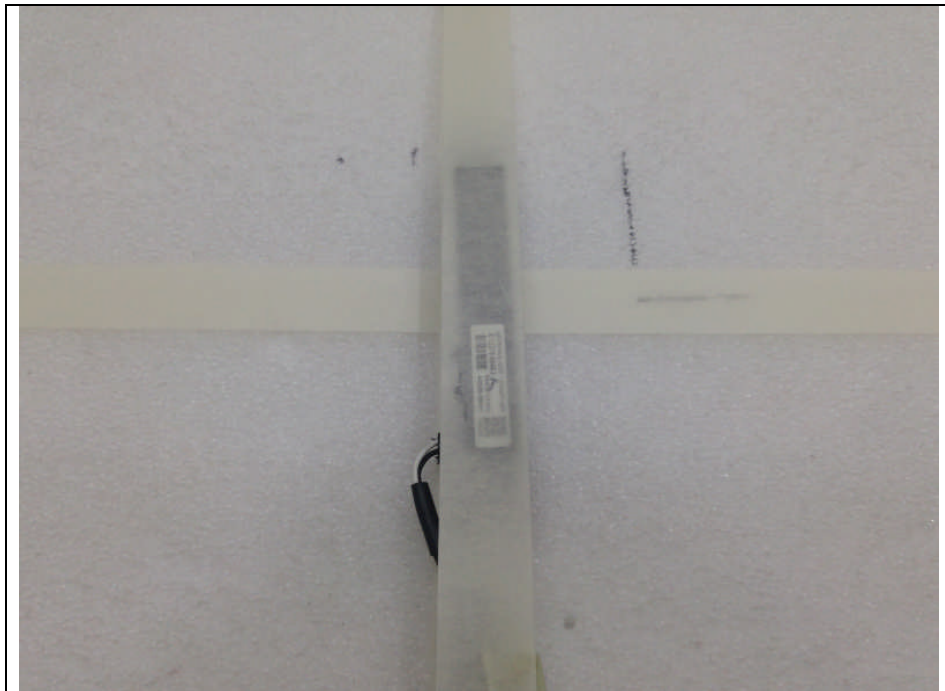
## 1. Orthogonal planes of EUT

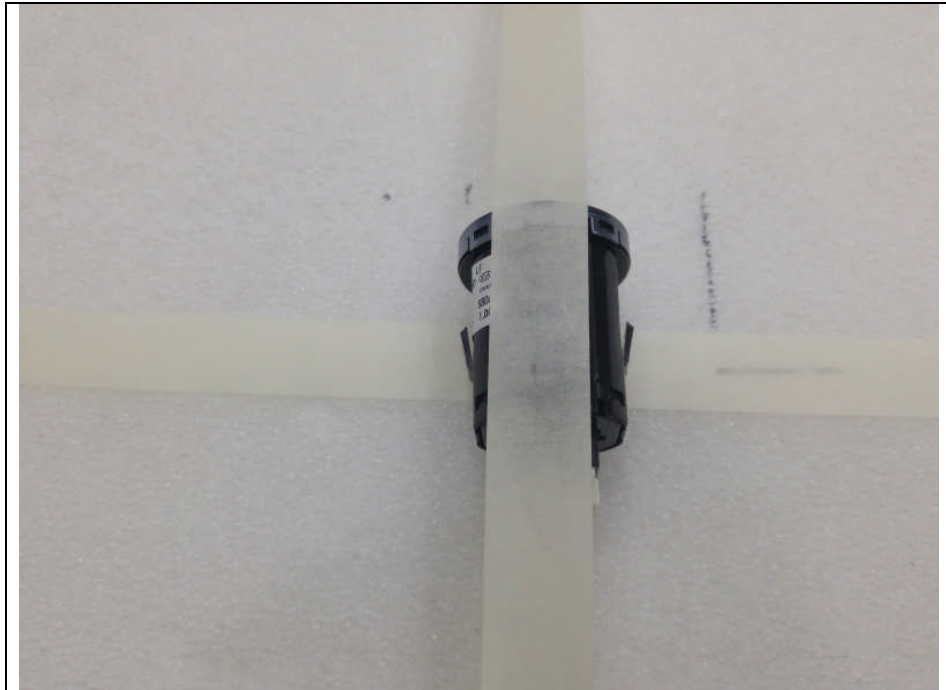
- The testing was set in the below orthogonal plane and measured.

**X-axis: AST & DRV Antenna**



**X-axis: BUM & INT & INT3 & TNK Antenna**





## 2. Photo of Radiated Spurious Emission Test (Below 30 MHz)

