

Important Safety Information

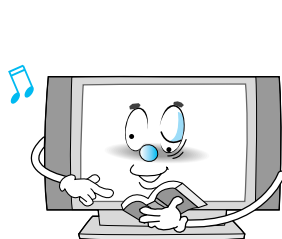
Always be careful when using your PDP. To reduce the risk of fire, electrical shock, and other injuries, keep these safety precautions in mind when installing, using, and maintaining your machine.

1. Read these instructions.
2. Keep these instructions.
3. Heed all warnings.
4. Follow all instructions.
5. Do not use this apparatus near water.
6. Clean only with a dry cloth.
7. Do not block any of the ventilation openings. Install in accordance with the manufacturer's instructions.
8. Do not install near any heat sources such as radiators, heat registers, stoves, or other apparatus (including amplifiers) that produce heat.
9. Do not defeat the safety purpose of the polarized or grounding type plug. A polarized plug has two blades with one wider than the other. A grounding type plug has two blades and a third grounding prong. The wide blade or the third prong is provided for your safety. When the provided plug does not fit into your outlet, consult an electrician for replacement of the obsolete outlet.
10. Protect the power cord from being walked on or pinched particularly at plugs, convenience receptacles, and the point where they exit from the apparatus.
11. Only use the attachments/accessories specified by the manufacturer.
12. Use only with a cart, stand, tripod, bracket, or table specified by the manufacturer, or sold with the apparatus. When a cart is used, use caution when moving the cart/apparatus combination to avoid injury from tip-over.

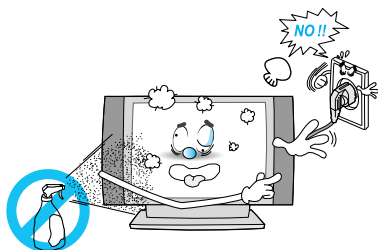


13. Unplug this apparatus during lightning storms or when unused for long periods of time.
14. Refer all servicing to qualified service personnel. Servicing is required when the apparatus has been damaged in any way, such as power supply cord or plug is damaged, liquid has been spilled or objects have fallen into the apparatus, the apparatus has been exposed to rain or moisture, does not operate normally, or has been dropped.

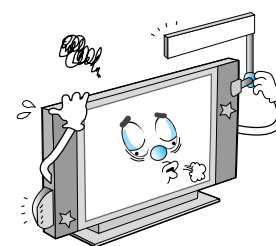
Important Safety Information



Follow all operating and use instructions.



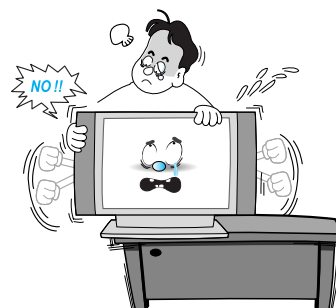
Unplug the Monitor from the wall outlet before cleaning. Use a damp cloth; do not use liquid or aerosol cleaners.



Never add any attachments and/or equipment without approval of the manufacturer. Such additions can increase the risk of fire, electric shock, or other personal injury.



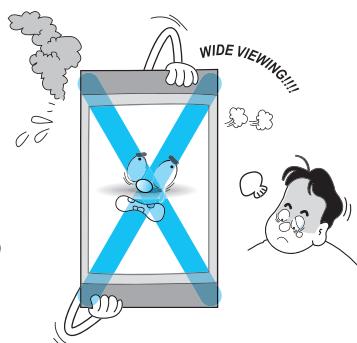
Do not use the Monitor where contact with or immersion in water is a possibility, such as near bath tubs, sinks, washing machines, swimming pools, etc.



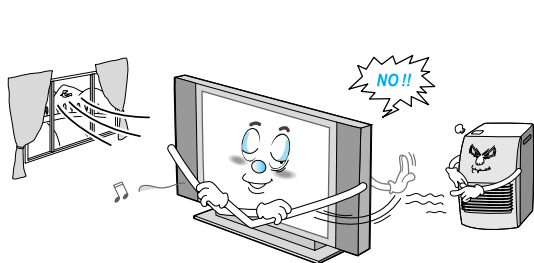
When installing the Monitor on a table, be careful not to place the edge of its stand.

- This may cause the Monitor to fall, causing serious injury to a child or adult, and serious damage to the Monitor.

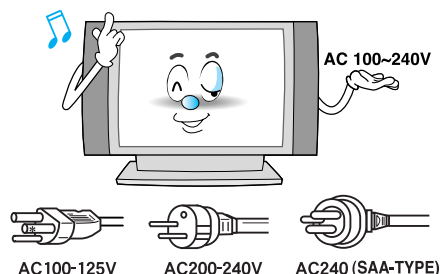
This plasma display is designed to be mounted horizontally (wide viewing). Any inquiry regarding its vertical position should be forwarded to the manufacture directly.



Important Safety Information

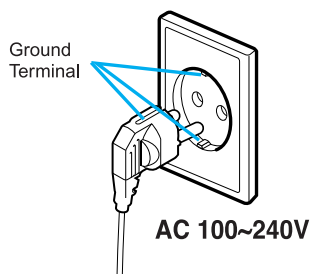


Provide ventilation for the Monitor. The unit is designed with slots in the cabinet for ventilation to protect it from overheating. Do not block these openings with any object, and do not place the Monitor on a bed, sofa, rug or other similar surface. Do not place it near a radiator or heat register. If you place the Monitor on a rack or bookcase, ensure that there is adequate ventilation and that you've followed the manufacturer's instructions for mounting.

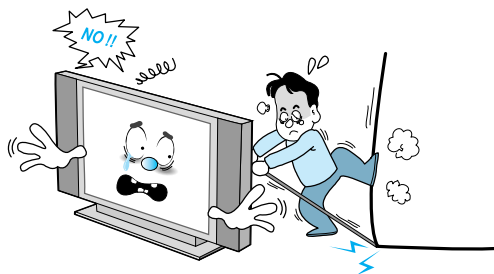


Use only the accessory cord designed for this product to prevent shock. The power supply voltage rating of this product is AC100-240V, the power cord attached conforms to the following power supply voltage. Use only the power cord designated by our dealer to ensure Safety and EMC.

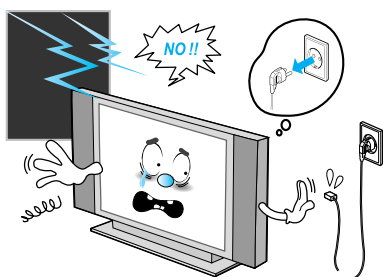
When it is used by other power supply voltage, power cable must be changed. Consult your product dealer.



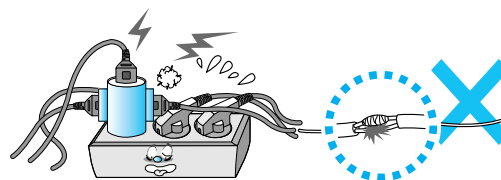
Use only a grounded or polarized outlet. For your safety, this Monitor is equipped with a polarized alternating current line plug having one blade wider than the other. This plug will fit into the power outlet only one way. If you are unable to insert the plug fully into the outlet, try reversing the plug. If the plug still does not fit, contact your electrician to replace your outlet.



Avoid overhead power lines. An outside antenna system should not be placed in the vicinity of overhead power lines or other electric light or power circuits or where it can fall into such power lines or circuits. When installing an outside antenna system, be extremely careful to keep from touching the power lines or circuits. Contact with such lines can be fatal.

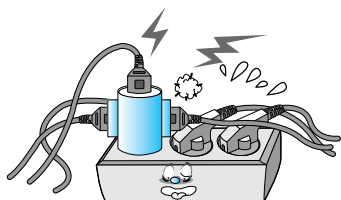


Unplug the Monitor from the wall outlet and disconnect the antenna or cable system during a lightning storm or when left unattended and unused for long periods of time. This will prevent damage to the unit due to lightning and power-line surges.

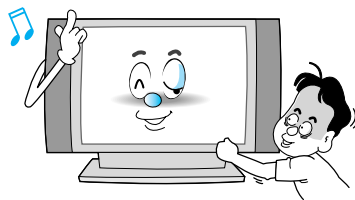


Protect the power cord. Power supply cords should be routed so that they won't be walked on or pinched by objects placed on or against them. Pay particular attention to cords at plugs, convenience receptacles, and the point where they exit from the unit.

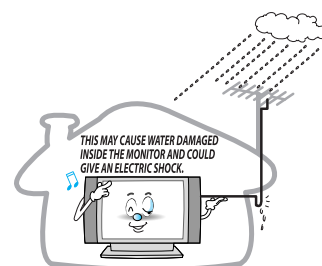
Important Safety Information



Do not overload the wall outlet or extension cords. Overloading can result in fire or electric shock.



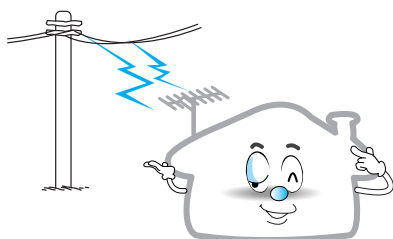
Do not insert anything through the openings in the unit, where they can touch dangerous voltage points or damage parts. Never spill liquid of any kind on the Monitor.



Bend antenna cable between inside and outside building to prevent rain from flowing in.

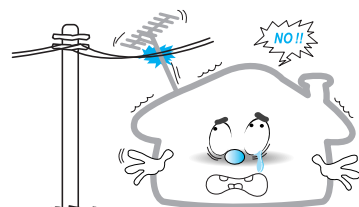
- This may cause water damaged inside the Monitor and could give an electric shock.

Ground outdoor antennas. If an outside antenna or cable system is connected to the Monitor, be sure the antenna or cable system is grounded so as to provide some protection against voltage surges and built-up static charges. Section 810 of the National Electrical Code, ANSI/NFPA No.70-1984, provides information about proper grounding of the mast and supporting structure, grounding of the lead-in wire to an antenna discharge unit, size of grounding conductors, location of antenna discharge unit, connection to grounding electrodes, and requirements for the grounding electrode.



Do not place an outside antenna in the vicinity of overhead power lines or other electric light or power circuits.

- This may cause an electric shock.



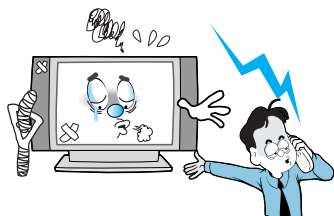
There should be enough distance between an outside antenna and power lines to keep the former from touching the latter even when the antenna falls.

- This may cause an electric shock.

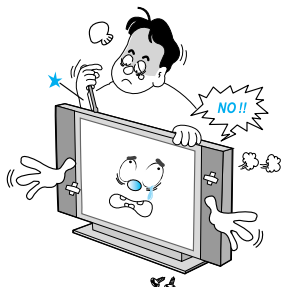
Do not attempt to service the Monitor yourself. Refer all servicing to qualified service personnel. Unplug the unit from the wall outlet and refer servicing to qualified service personnel under the following conditions:

- when the power-supply cord or plug is damaged
- if liquid has been spilled on the unit or if objects have fallen into the unit
- if the Monitor has been exposed to rain or water
- if the Monitor does not operate normally by following the operating instructions
- if the Monitor has been dropped or the cabinet has been damaged
- when the Monitor exhibits a distinct change in performance

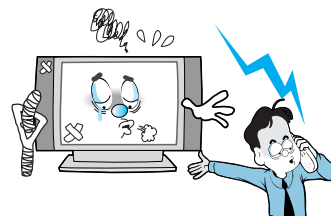
Important Safety Information



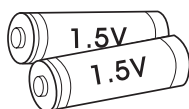
When replacement parts are required, be sure the service technician uses replacement parts specified by the manufacturer or those that have the same characteristics as the original part. Unauthorized substitutions may result in additional damage to the unit.



Upon completion of any service or repairs to this Monitor, ask the service technician to perform safety checks to determine that the Monitor is in a safe operating condition.

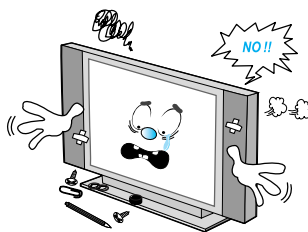


If you make adjustments yourself, adjust only those controls that are covered by the operating instructions. Adjusting other controls may result in damage and will often require extensive work by a qualified technician to restore the Monitor to normal.



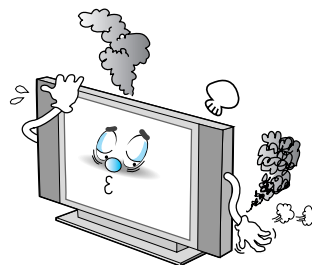
Only use the specified batteries.

- This may cause damage to the Monitor or could give an electric shock.



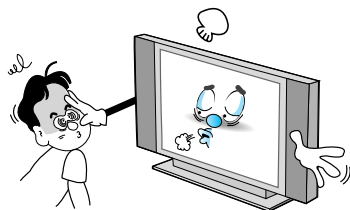
Do not place anything containing liquid on top of the Monitor.

- This may cause a fire or could give an electric shock.



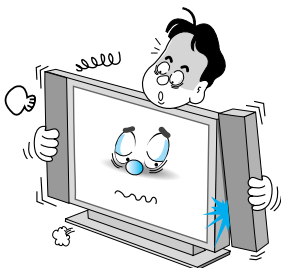
In case of smoke or strange smell from the Monitor, switch it off, unplug it from the wall outlet and contact your dealer or service center.

- This may cause a fire or could give an electric shock.



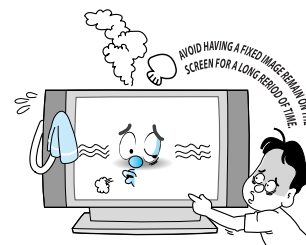
The distance between eyes and the screen should be about 5~7 times as long as diagonal length of the screen.

- If not, eyes will strain.



When moving the Monitor assembled with speakers do not carry holding the speakers.

- This may cause the Monitor to fall, causing serious injury to a child or adult, and serious damage to the Monitor.

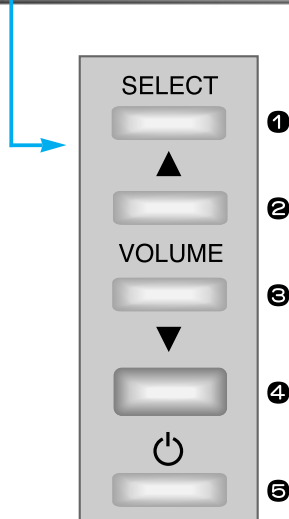


Avoid having a fixed image remain on the screen for a long period of time. Typically a frozen still picture from a VCR, 4:3 picture format or if a CH label is present; the fixed image may remain visible on the screen.

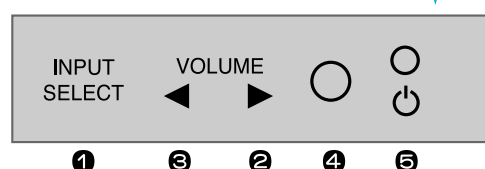
Overview Of Your New PDP

OSD Button

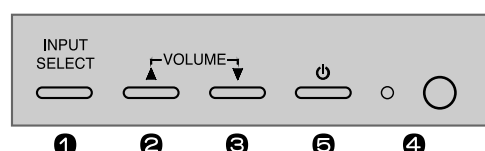
< Front Panel >



< B, C type >



< A type >



< D type >

▶ OSD Button & Function

- ❶ Input Signal Source Select
- ❷ Audio Volume Up
- ❸ Audio Volume Down
- ❹ Remote Sensor & Power Indicator
- ❺ Power (Stand By)

OSD Key Function

▶ SELECT

Select the signal source from multiple input source such as TV, AV1, AV2, S-Video, Component, Analog RGB and DTV YPbPr.

▶ VOL- / VOL+

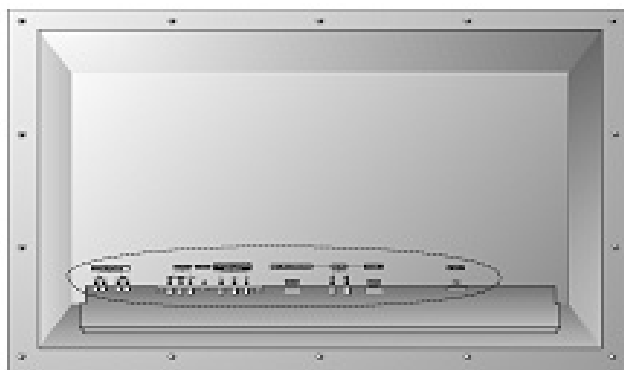
Change the audio level in normal display mode and move the scroll bar in Volume control menu.

▶ AUDIO INPUT TERMINAL

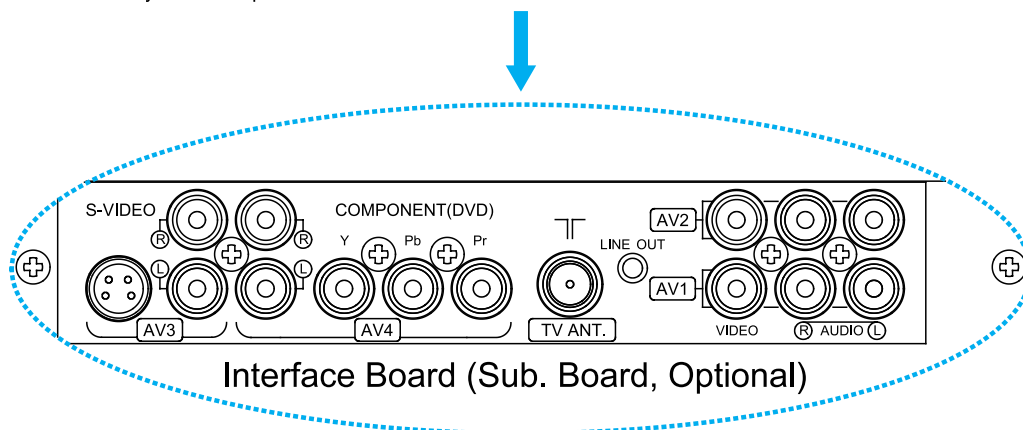
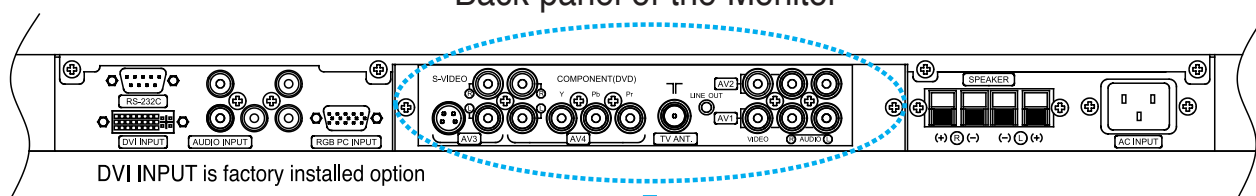
Turn on and off the main power.

Overview Of Your New PDP

Connecting To External Equipment



Back panel of the Monitor



► RS-232C INPUT CONTROL TERMINAL

Control the monitor's functions externally by external equipment. Connects to the computer RS-232C output terminal.

► DVI INPUT (Optional)

Connects DVI Computer Source (Digital Signal) here. Contact your dealer for buying optional item.

► AUDIO INPUT TERMINAL

Connects to the audio output terminal of a video deck or similar source device.

Overview Of Your New PDP

▶ RGB PC INPUT TERMINAL (VGA/SVGA/XGA)

Connects to the computer's analog RGB or DTV receiver output terminal.

▶ S-Video Input Terminal

Connects to a S-Video output terminal of a S-VHS VCRs or DVD players.

▶ Component Input (Y, Pb, Pr)

Connects to a component output terminal of a DVD player.

▶ TV Antenna Terminal

Connects to an antenna cable.

▶ Line Out

Fixed Level Audio signal output to external audio amplifier (Optional) or Headphones (Optional).

▶ Composite Input Terminal (AV1, AV2)

Connects to a composite output terminal of VCRs or DVD players.

▶ AC (POWER) INPUT TERMINAL

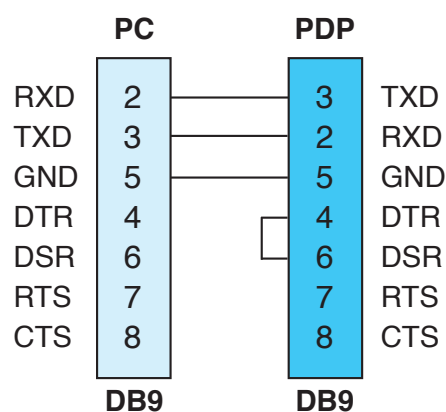
Firmly insert the accessory power cord as far as it will go into the power input terminal.

Firmly push the power cord plug as far as it will go into the power socket.

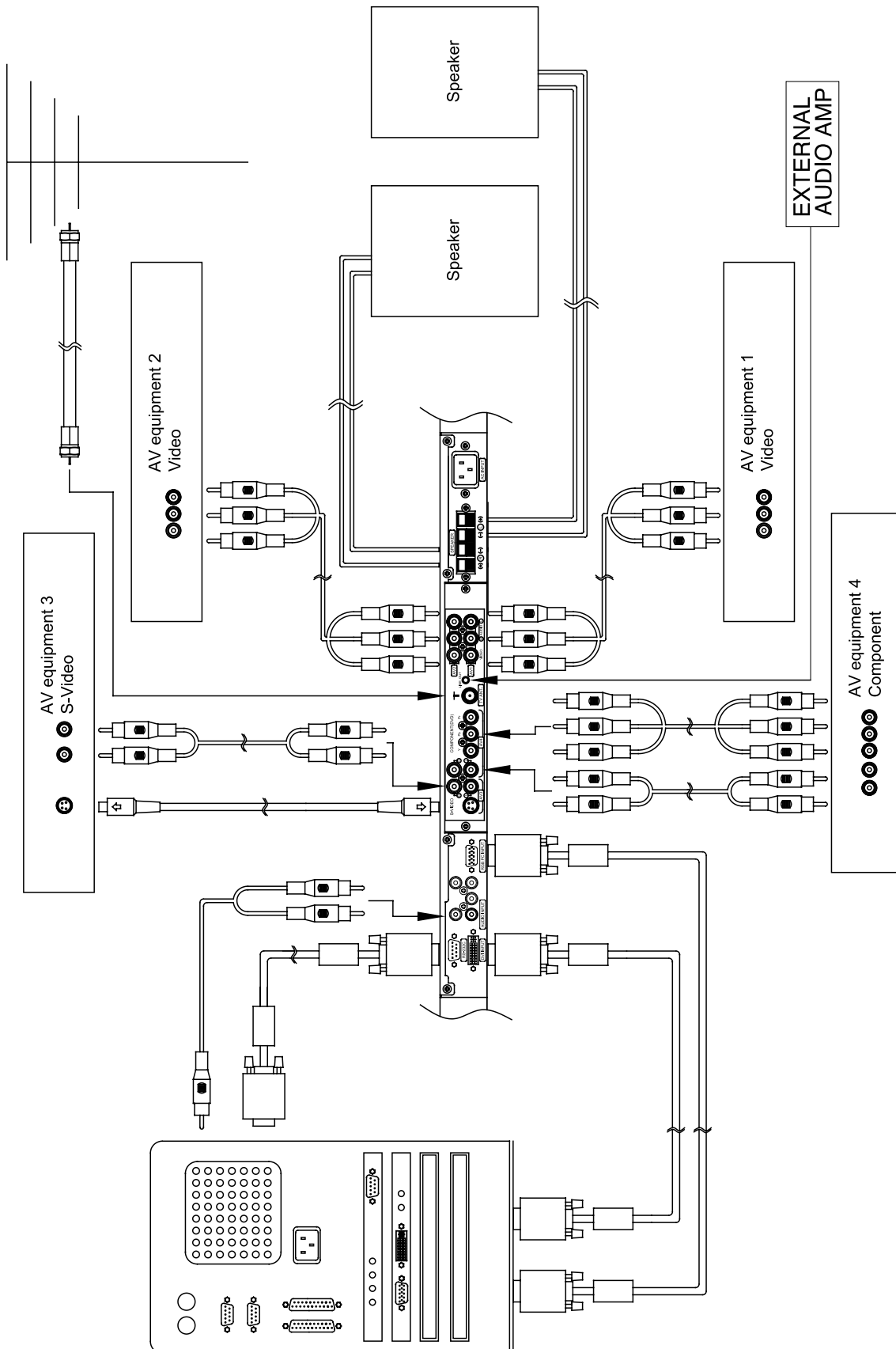
Connectors	
AUDIO INPUT	RCA Pin Jack
VIDEO INPUT	RCA Pin Jack
S-VIDEO INPUT	Pin Did
COMPONENT VIDEO INPUT	BNC
RGB INPUT	15-pin D-sub
RS-232C	9-pin D-sub

RS-232C Configurations

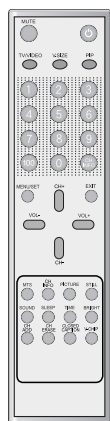
3-wire configuration (Not standard)



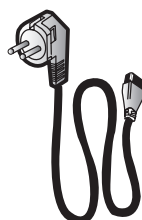
Overview Of Your New PDP



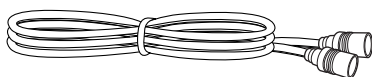
Accessories



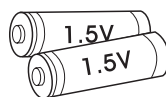
Remote Control Handset



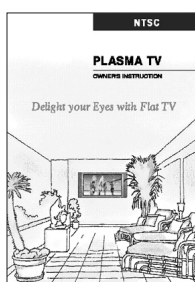
Power Cord



RF Cable



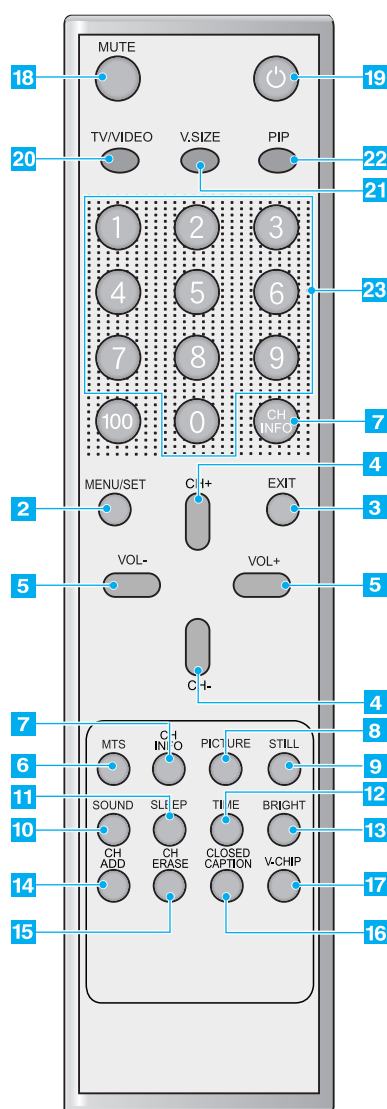
Alkaline Batteries



Owner's Manual

Features Of The Remote Control

When using the remote control, always point it directly at the IR sensor of Plasma monitor.



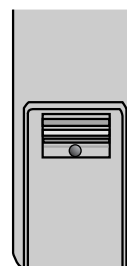
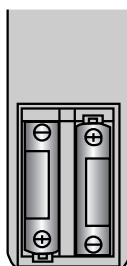
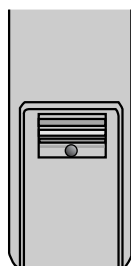
- 19 POWER**
Turns the main power on and to stand by.
- 20 TV / VIDEO**
Select the signal source from multiple input source of TV, AV1, AV2, S-Video, Component, Analog RGB and DTV YPbPr.
- 21 V.SIZE**
Change the image size setting, ie; 16:9, 4:3, etc.
- 22 PIP**
Activate PIP function on PC for DTV Mode.
- 23 Number key**
Direct TV channel number input.

- 1 PRE PG**
Go back to previous TV channel.
- 2 MENU / SET**
Activate the OSD window, enter the sub-menu.
- 3 EXIT**
Exit from the current OSD menu or sub-menu.
- 4 CH+ / CH-**
Change the TV channel on TV mode up or down.
- 5 VOL+ / VOL-**
Change the audio level, increase or decrease.
- 6 MTS**
Multi Channel Television Stereo. Select stereo, mono or Secondary Audio Program (SAP).
- 7 CH INFO**
See information regarding the channel that you select.
- 8 PICTURE**
Choose three different modes of picture settings.
- 9 STILL**
Activate the temporary image freeze feature.
- 10 SOUND**
Choose the best appropriate audio environment.
- 11 SLEEP**
TV off time setting, push button for 30 min, 60 min, 90 min and 180 min.
- 12 TIME**
Set the Time function.
- 13 BRIGHT**
Choose one of five different setting modes ; Brightness, Contrast, Color and Sharpness by pushes.
- 14 CH ADD**
Add the TV channel preset.
- 15 CH ERASE**
Erase the TV channel preset.
- 16 CLOSED CAPTION**
Activate the closed caption function.
- 17 V-CHIP**
Activate the V-chip function.
- 18 MUTE**
Mute on / off.

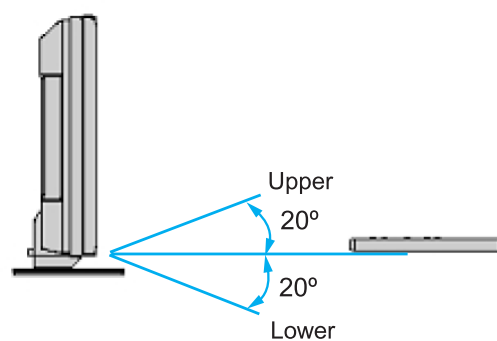
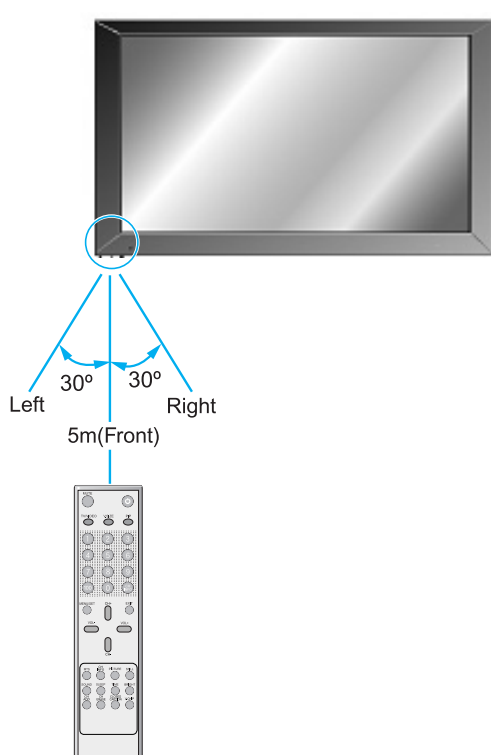
Features Of The Remote Control

Loading The Batteries

- 1 Press on the cover and slide in the direction of the arrow.
- 2 Load two AAA batteries, taking care that the + and - ends face the correct direction.
- 3 Close the cover until it clicks.



Reception range of remote control



Monitor Installation

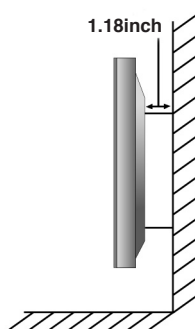
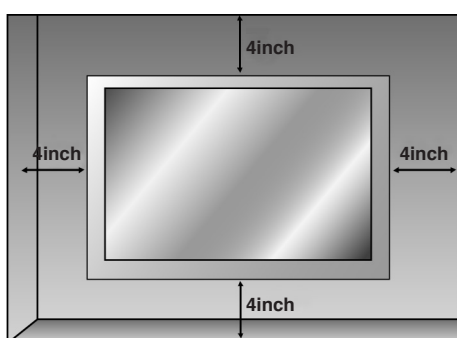
The Monitor can be installed in various ways such as Wall Mounting type, Table Stand type, etc..

Wall Mount (optional) Installation

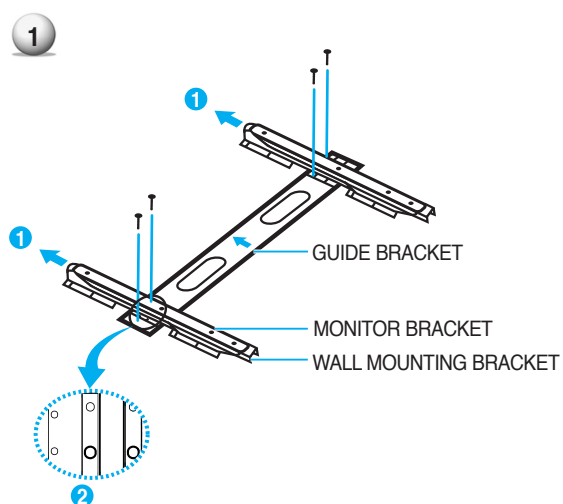


< The monitor can be installed on the wall as the picture above >

- Install this monitor only in a location where adequate ventilation is available.

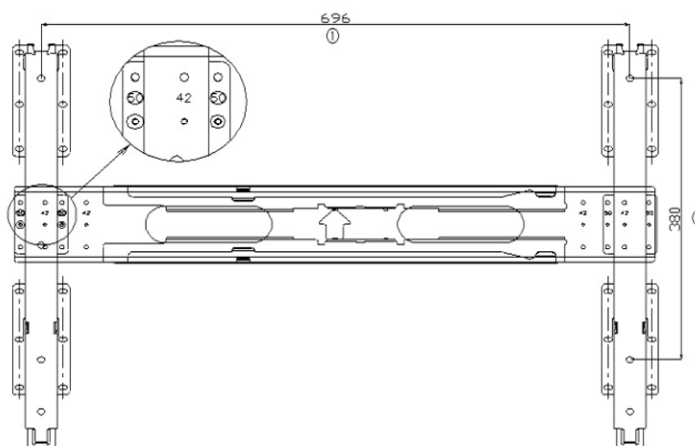


Monitor Installation



1. Before installation of monitor, Assemble to the same inch of the PDP shown as left(2).
2. Lift the monitor brackets off the mounting frame shown as arrow 1.

HP-4200M WALL MOUNT-BRACKET

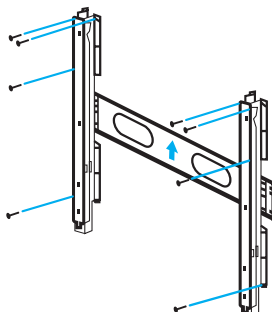


Notice

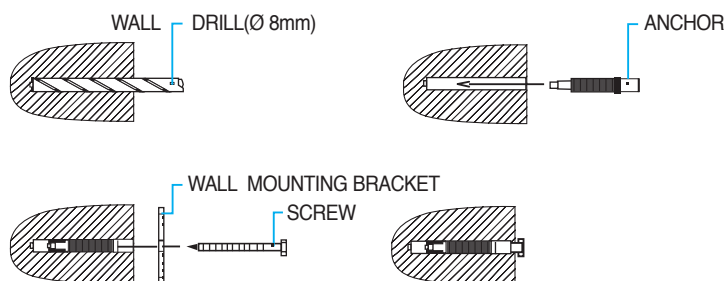
- Please use Hole 1 for Horizontal axis which is printed 50 Inch, and use Hole 2 for Vertical axis.

Monitor Installation

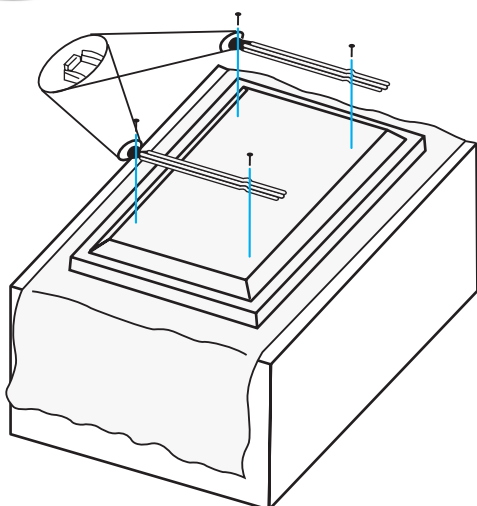
2



1. Drill the 8 hole positions shown as left. Using an 8mm drill appropriate for the material on the wall, drill each hole to a depth of exceed 80mm.
2. Clean each drill hole.
3. Insert an anchor supplied with the wall mounting bracket into each hole.
4. Mount the wall mounting bracket on the wall using the 8 screws supplied.

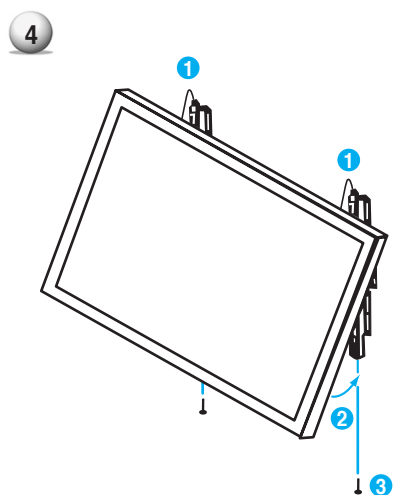


3

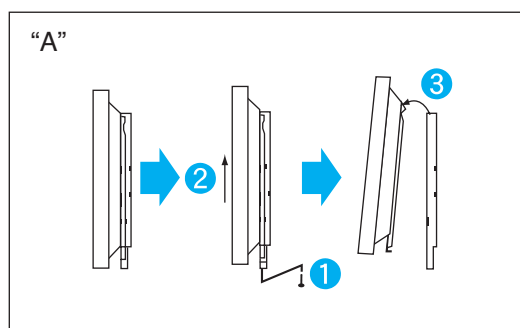
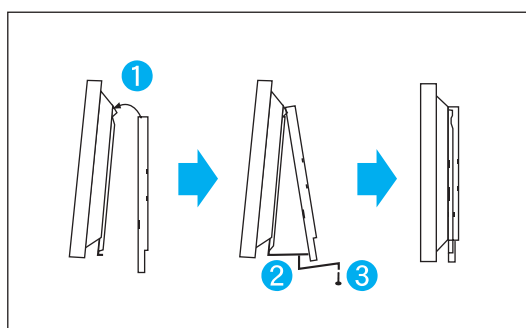


1. Shown as left, carefully place the monitor screen side down on a cushioned surface that will protect the monitor and screen from damage.
2. Insert the monitor brackets on the monitor shown as left. Install the 4 bolts securely, in the back of the monitor in the holes provided. Be sure the bracket hooks are at the top side of the monitor. (for 42" PDP)

Monitor Installation



1. Two people who are capable of lifting the weight of the monitor should do the following :
Carefully lift up the monitor and place it in position on the wall mounting bracket securely shown as by arrow
Push the bottom of the monitor toward the wall as shown in arrow 2. so that the monitor will "click" into position onto the wall mounting bracket.
2. Wall mounting bracket and monitor bracket should combine together by bolt shown as left.
3. Caution : Be sure to lift a monitor/speakers assembly by the monitor only, do not lift using only the speakers.
4. When separate the monitor, follow shown as below "A".



Wall Mount Accessories



ANCHOR 8EA



SCREW 8EA



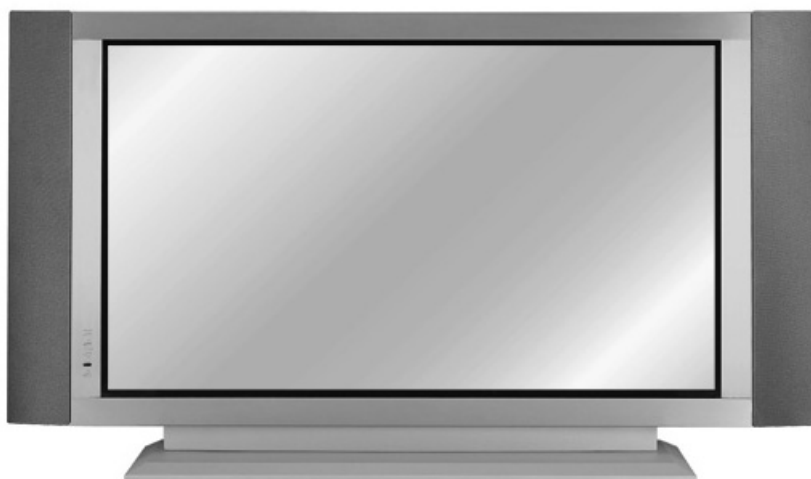
BOLT 6EA
M8 x 30L



BOLT 6EA
M4 x 6L

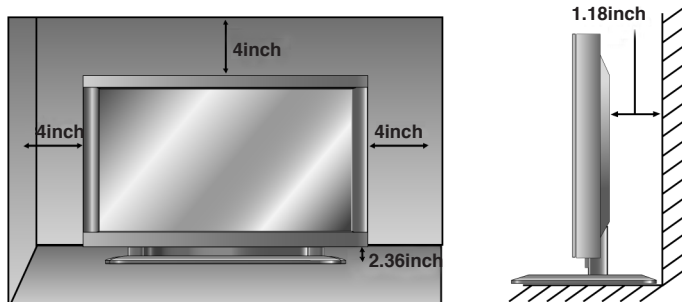
Monitor Installation

Table Stand (optional) Installation



< The Monitor can be installed on a desk as shown above. >

- Table Stand mount minimum allowable clearances for adequate ventilation.



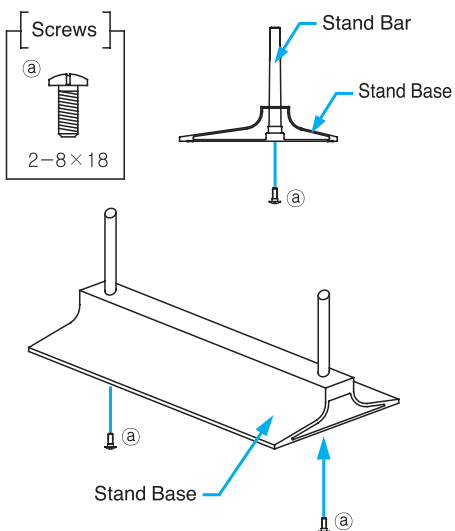
Monitor Installation

Installation

Stand-Table User's Guide

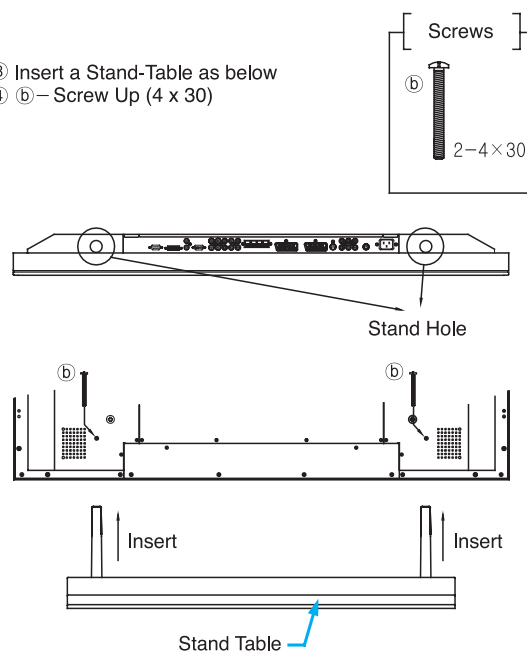
① Insert Stand Bars into the Stand Base as shown below

② (a) – Screw Up (8 x 18)



③ Insert a Stand-Table as below

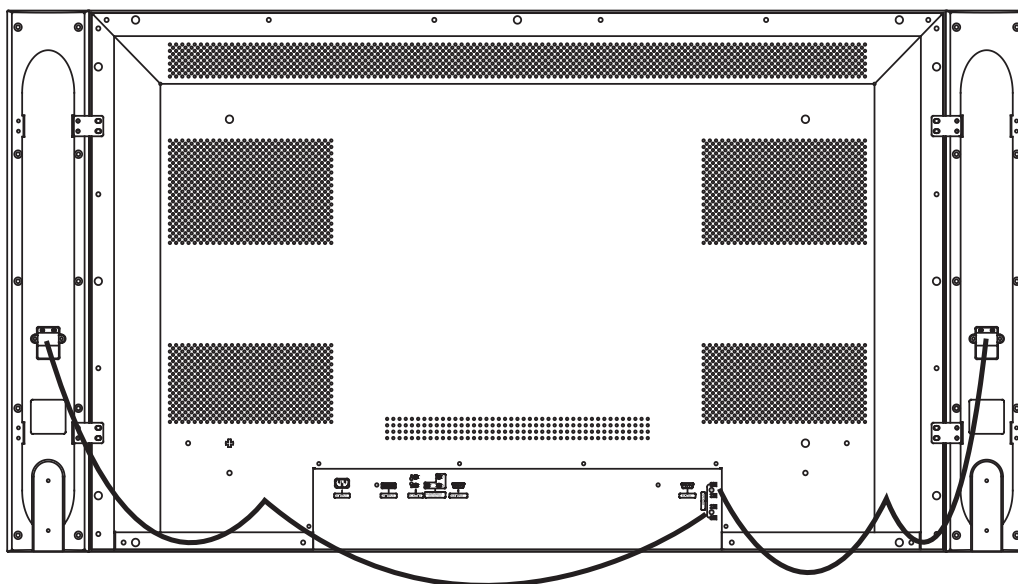
④ (b) – Screw Up (4 x 30)



Monitor Installation

Speaker Installation

► 42" Speaker (Optional) Installation



- Match red to red, black to black of Speaker / TV.

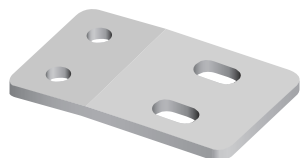


Caution

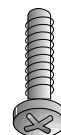
- **Be sure monitor power is turned off before making any connections.**
Place the speakers in the position you want. Install the speaker wires on the monitor and speaker. Be sure to connect the positive "+" wire to the "+" input and the negative "-" wire to the "-" input. Connect left monitor input to left speaker and right monitor input to right speaker. Any extra speaker wire length remaining can be bunched into the wire holders provided. (Caution: Once installed, the speaker wire holders lock into position and can't be removed.)
- **We advise you to turn off the PDP when you connect external equipments such as speakers to the PDP.**

Monitor Installation

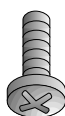
► Speaker Accessories



4-Iron Plates
(Mount speakers to monitor)



8-4 x 16 Long Bolts
(Attach iron plates to speakers)



8-4 x 8 Short Bolts
(Attach iron plates to monitor)



2-Speaker Wires

