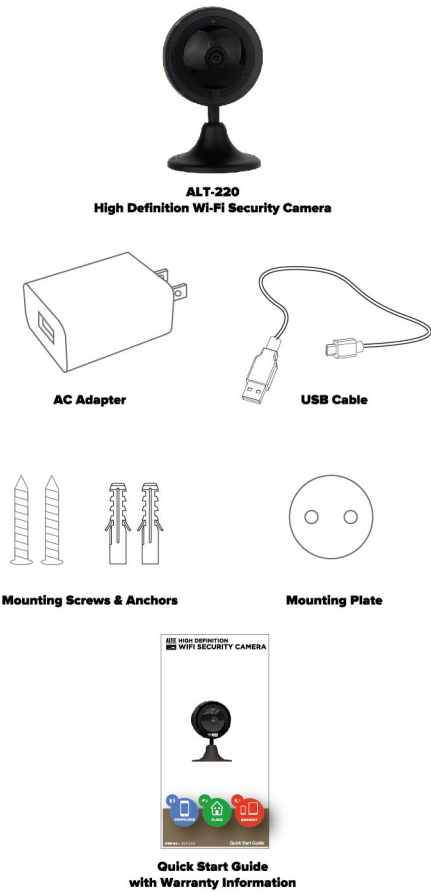


ALTEC
TRANSING
HIGH DEFINITION
WIFI SECURITY CAMERA



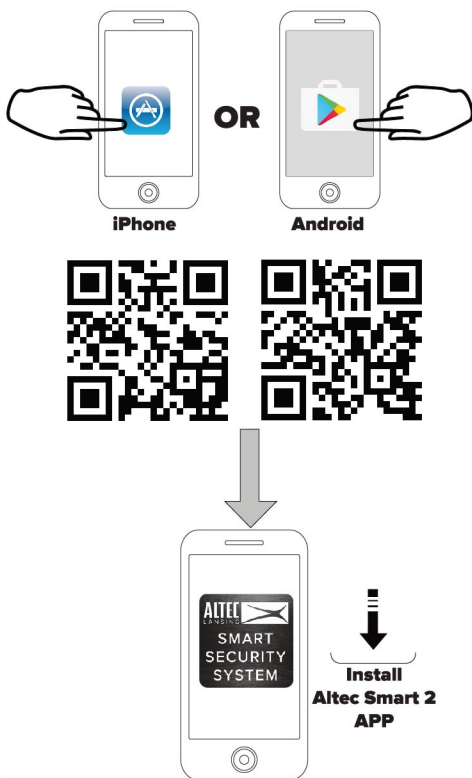
ITEM NO.: ALT-220 Quick Start Guide

1.
WHAT'S INCLUDED



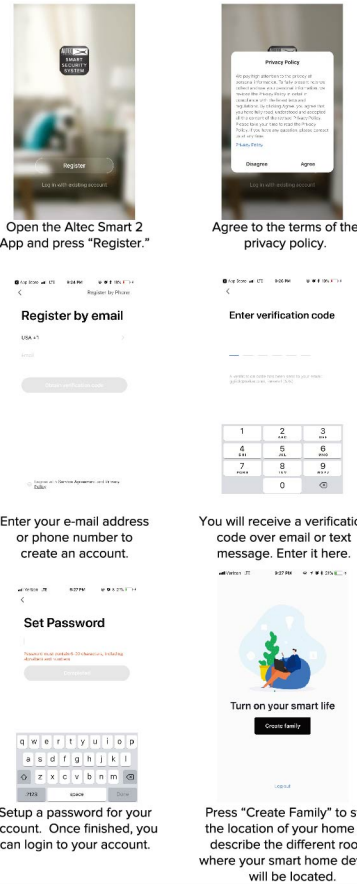
2.
APP INSTALLATION

In order to use your camera, you will first need to download the Altec Smart 2 App, which is available on the Google Play Store and on the iPhone App Store.



3.
APP REGISTRATION

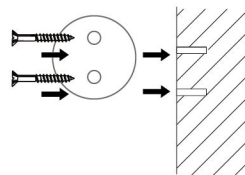
To successfully use the Altec Smart 2 App, you will first need to create an account. To do so, follow the steps below.



4.
MOUNTING

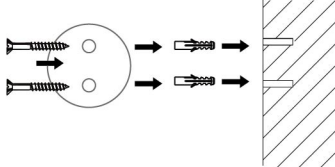
To mount your camera to a wall, follow the steps below.

FOR WOODEN WALLS OR STUDS



Use the included mounting screws for wooden walls or studs. They will first go through the screw holes on the mounting plate, and then screw into the wall.

FOR CONCRETE, BRICK OR STUCCO WALLS



Use the included mounting anchors for concrete, brick or stucco walls. First screw the mounting anchors into the wall. Then the mounting screws will go through the screw holes on the mounting plate, and then screw into the mounting anchors.



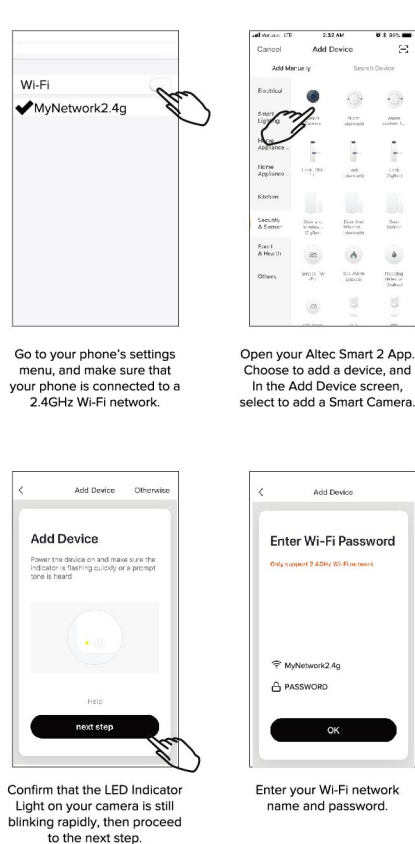
Once the mounting plate is attached to the wall, attach your camera to the mounting plate. Make sure the camera sticks on securely.

JUST ASK.

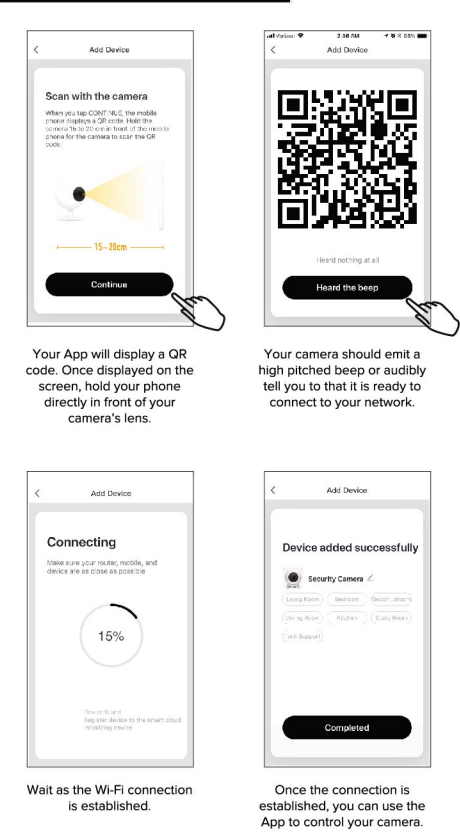
5.
CAMERA SETUP



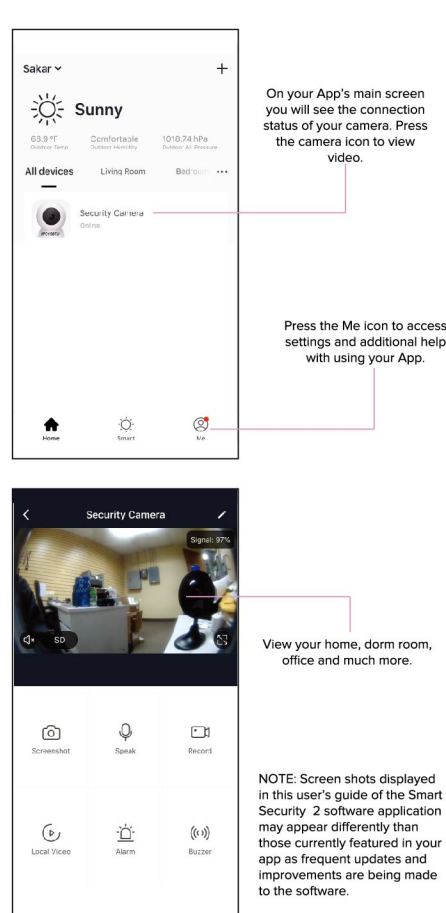
6.
WI-FI CONNECTION



7.
WI-FI CONNECTION



8.
USING THE APP



This device complies with part 15 of the FCC Rules. Operation is subject to the following two conditions:
(1) This device may not cause harmful interference, and
(2) this device must accept any interference received, including interference that may cause undesired operation.
NOTE: This equipment has been tested and found to comply with the limits for a Class B digital device, pursuant to part 15 of the FCC Rules. These limits are designed to provide reasonable protection against harmful interference in a residential installation. This equipment generates, uses and can radiate radio frequency energy and, if not installed and used in accordance with the instructions, may cause harmful interference to radio communications. However, there is no guarantee that interference will not occur in a particular installation. If this equipment does cause harmful interference to radio or television reception, which can be determined by turning the equipment off and on, the user is encouraged to try to correct the interference by one or more of the following measures:
- Reorient or relocate the receiving antenna.
- Increase the separation between the equipment and receiver.
- Connect the equipment into an outlet on a circuit different from that to which the receiver is connected.
- Consult the dealer or an experienced radio/ TV technician for help.
Warning: Changes or modifications to this unit not expressly approved by the part responsible for compliance could void the user's authority to operate the equipment.
FCC Radiation Exposure Statement
The device has been evaluated to meet general RF exposure requirement. The device can be used in mobile/fixed (Min 20cm) exposure condition without restriction.