



# WIRELESS TOWER SPEAKER

(WITH DISCO PARTY LIGHTS)  
PBT3012 | USER MANUAL



Questions?  
Need some help?  
This manual will help you  
setup your new product.



If you still have questions,  
call our help line:  
1-877-769-9481



or visit us at:  
[www.southatlantic.com](http://www.southatlantic.com)  
Click on "Product Support"

## IN THE BOX



Wireless Tower Speaker



User Manual



3.5mm Auxiliary Cable



4 Screws

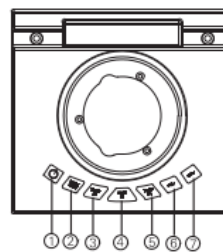


Tower Base



Remote Control

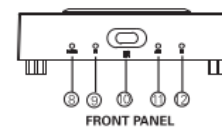
## LOCATION OF CONTROLS



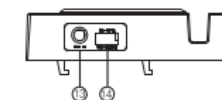
TOP PANEL

1. **[ON/OFF] button:** Power ON/OFF
2. **[MODE/LIGHT] button:**
  - Quick press - Bluetooth, AUX IN, FM Radio
  - Long press - activate light
3. **[TUNE-/FM] button:**
  - Quick press - skip to previous song
  - Long press - tune FM Radio up
4. **[SCAN/FM] button:**
  - Quick press - Play/pause
  - Long press - scan FM Radio
5. **[TUNE+/FM] button:**
  - Quick press - skip to next song
  - Long press - tune FM Radio down
6. **[VOL -] button:** Decrease volume
7. **[VOL +] button:** Increase volume

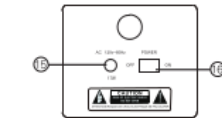
## LOCATION OF CONTROLS (cont'd)



FRONT PANEL



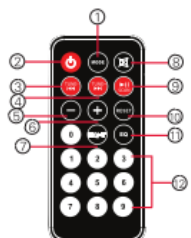
SIDE PANEL



BACK PANEL

8. LED Power indicator light
9. LED Bluetooth indicator light
10. Infrared sensor
11. LED AUX indicator light
12. LED FM Radio indicator light
13. AUX-IN port
14. USB charging port (for the speaker and other devices)
15. AC plug
16. Main Power ON/OFF switch

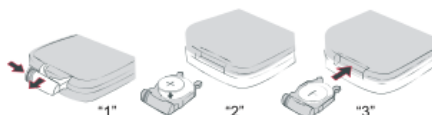
## LOCATION OF CONTROLS (cont'd)



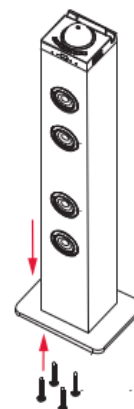
1. **[MODE] button:** Bluetooth, AUX IN, FM Radio
2. **[ON/OFF] button:** Power ON/OFF
3. **[TUNE-/FM] button:**
  - Quick press - skip to previous song
  - Long press - tune FM Radio up
4. **[TUNE+/FM] button:**
  - Quick press - skip to next song
  - Long press - tune FM Radio down
5. **[VOL -] button:** Decrease volume
6. **[VOL +] button:** Increase volume
7. **[LIGHT] button:** Turn on lights
8. **[MUTE] button:** Mute
9. **[PLAY/PAUSE] button:**
  - Quick press - Play/pause
  - Long press - scan FM Radio
10. **[RESET] button:** Stop
11. **[EQ] button:** Equalizer
12. Numeric buttons

## INSTALLING THE BATTERY

**NOTE:** The battery for the remote control (1 CR2025 lithium battery) is included. To replace the battery, push and slide out the battery door in the remote control. Replace the battery with a new CR2025 battery with the polarity "+" facing up. Slide the door back.



## SETTING UP THE SPEAKER



1. Connect the wooden tower base to the speaker using the supplied screws.
2. Connect the AC plug on the back of the unit into an outlet.

## PAIRING THE SPEAKER

1. Plug the speaker into a power source.
2. Turn the speaker ON by pressing the Main Power switch on the back of the unit, then the **[ON/OFF]** button on the top panel or the remote control.
3. Press the **[MODE/LIGHT]** button on the speaker or the **[MODE]** button on the remote control repeatedly until the LED Bluetooth indicator light flashes GREEN and a tone is heard.
4. Keep the speaker and Bluetooth enabled device within 3 feet of each other during the pairing process.
5. Set your mobile phone or other Bluetooth enabled device to search for Bluetooth devices.

**i** If a paired device is in range, the speaker will connect to it automatically when Bluetooth mode is enabled.

### On an iPhone

- Go to **SETTINGS > BLUETOOTH** (Make sure Bluetooth is turned ON)



## PAIRING THE SPEAKER (cont'd)

### On a Blackberry

- Go to **SETTINGS/OPTIONS > BLUETOOTH**
- Enable **BLUETOOTH**



### On an Android Phone

- Go to **SETTINGS > BLUETOOTH > MENU > Search for devices** (Make sure Bluetooth is turned ON)



## PAIRING THE SPEAKER (cont'd)

### On other Cell Phones/Devices

- Review the instruction manual that came with your phone/device.



6. When the Bluetooth enabled device finds the turntable, select "PBT3012" from the list of found devices.
7. If required, enter the password 0000. Select OK or Yes to pair the two units.
8. After a successful pairing, the LED Bluetooth indicator light will slowly flash GREEN.

**NOTE:** If you would like to connect the speaker to another device, you must unpair the unit from the currently paired device first. In your device's Bluetooth settings, select "PBT3012," then select "unpair." When the speaker has been unpaired, it automatically goes into pairing mode again.



The screenshots above are typical of many Bluetooth enabled devices in the market today, and are used to assist in the explanation of the pairing process. Your Bluetooth enabled device's interface and interaction with the speaker may slightly differ from the illustrations above.

## USING THE SPEAKER

### Powering ON/OFF

Turn the speaker ON by pressing the Main Power switch on the back of the unit, then the **[ON/OFF]** button on the top panel or the remote control. Press again to turn OFF.

### Adjusting the volume

- Quickpress the **[VOL+]** button on the speaker or the **[+]** button on the remote control to gradually increase the volume; press and HOLD to continually increase the volume to maximum level.
- Quickpress the **[VOL -]** button on the speaker or the **[-]** button on the remote control to gradually decrease the volume; press and HOLD to continually decrease the volume to minimum level.
- Press the **[MUTE]** button on the remote control to mute the sound. Press again to turn the sound back on.

**i** You may also adjust the volume from your connected device's volume control.

### Switching modes

Press the **[MODE/LIGHT]** button on the speaker or the **[MODE]** button on the remote control repeatedly to switch between modes. The LED indicator light will light up accordingly: Bluetooth, AUX, and FM Radio.

### Disco light

To turn ON the Disco light, long press the **[MODE/LIGHT]** button on the speaker or the **[LIGHT]** button on the remote control. Long press again to turn OFF.

