

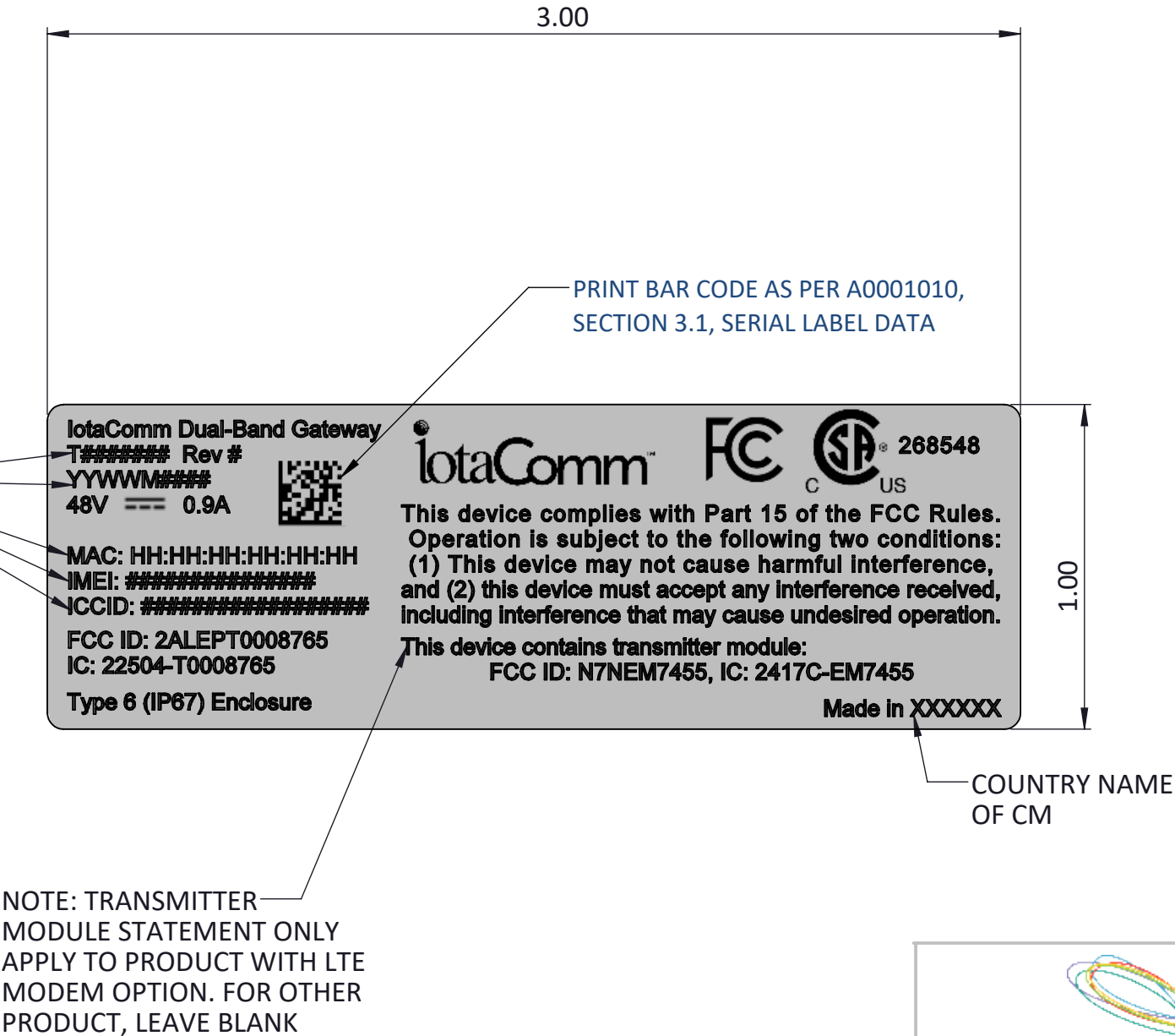
REVISIONS		
REV.	DESCRIPTION	DATE
A		22-Jun-2022
B	REMOVED CSA MARK	20-Sep-2022
C	ADDED CSA MARK, UPDATED NAME, FCC & IC ID, REMOVED ORDER CODE	01-Aug-2023

SAFETY AND REGULATORY LABEL

- SIZE: 3.00" X 1.00"
- FONT: ARIAL, 5 POINTS
- TEXT AND LAYOUT AS SHOWN BELOW

PART NUMBER, REVISION, SERIAL NUMBER, MAC ADDRESS, IMEI NUMBER AND ICCID NUMBER TO BE PRINTED BASED ON INDIVIDUAL PRODUCT

NOTE: IMEI AND ICCID ONLY APPLY TO PRODUCT WITH 3G/4G OPTION. FOR OTHER PRODUCT, LEAVE BLANK



- NOTES:
- DRAWING DIMENSIONS ARE FOR REFERENCE AND INSPECTION ONLY. THE ASSOCIATED 3D CAD FILE IS THE PRIMARY DIMENSION REFERENCE.
 - ALL DIMENSIONS IN INCHES [MM]
 - UNLESS OTHERWISE SPECIFIED TOLERANCES ARE:
DIMENSIONS: X ±0.02
X.X ±0.01
X.XX ±0.005
ANGLES: ±0.5°
 - MATERIAL: ZEBRA TECHNOLOGIES, Z-XTREME 4000T WHITE, Z-ULTIMATE 3000T WHITE, OR APPROVED EQUIVALENT.
 - PRINTER RIBBON: ZEBRA TECHNOLOGIES, 5095 HIGH-PERFORMANCE RESIN, OR APPROVED EQUIVALENT.
 - PRINT TEXT, SYMBOL, AND 2D BARCODE WITH ZEBRA TECHNOLOGIES PRINTING SYSTEM, COLOR: BLACK.
 - REMOVE ALL BURRS AND SHARP EDGES
 - ALL MATERIALS, FINISHES AND MANUFACTURING PROCESSES SHALL BE COMPLIANT WITH EU DIRECTIVES 2011/65 & 2015/863 (RoHS 3)
 - ALL MATERIALS, FINISHES AND PACKAGING SHALL BE COMPLIANT WITH EU DIRECTIVE 1907/2006 (REACH) AND THE CURRENT LIST OF SvHC
 - THIS PRODUCT SHALL BE BUILT TO THE REQUIREMENTS LISTED IN TEKTELIC PRODUCT WORKMANSHIP STANDARD A0001043.



TITLE:
LABEL, SAFETY AND REGULATORY, KONA MEGA IOTA

DWG NO.	REVISION	SIZE
T0008241	C	A3
SCALE:2:1		SHEET 1 OF 3



SCALE 1:1 IN A SIZE SHEET

