



## **INTERNAL PHOTOGRAPHS OF EQUIPMENT FOR RAY54 FOR VHF RADIO**

### **PHOTOGRAPHS OF EQUIPMENT**



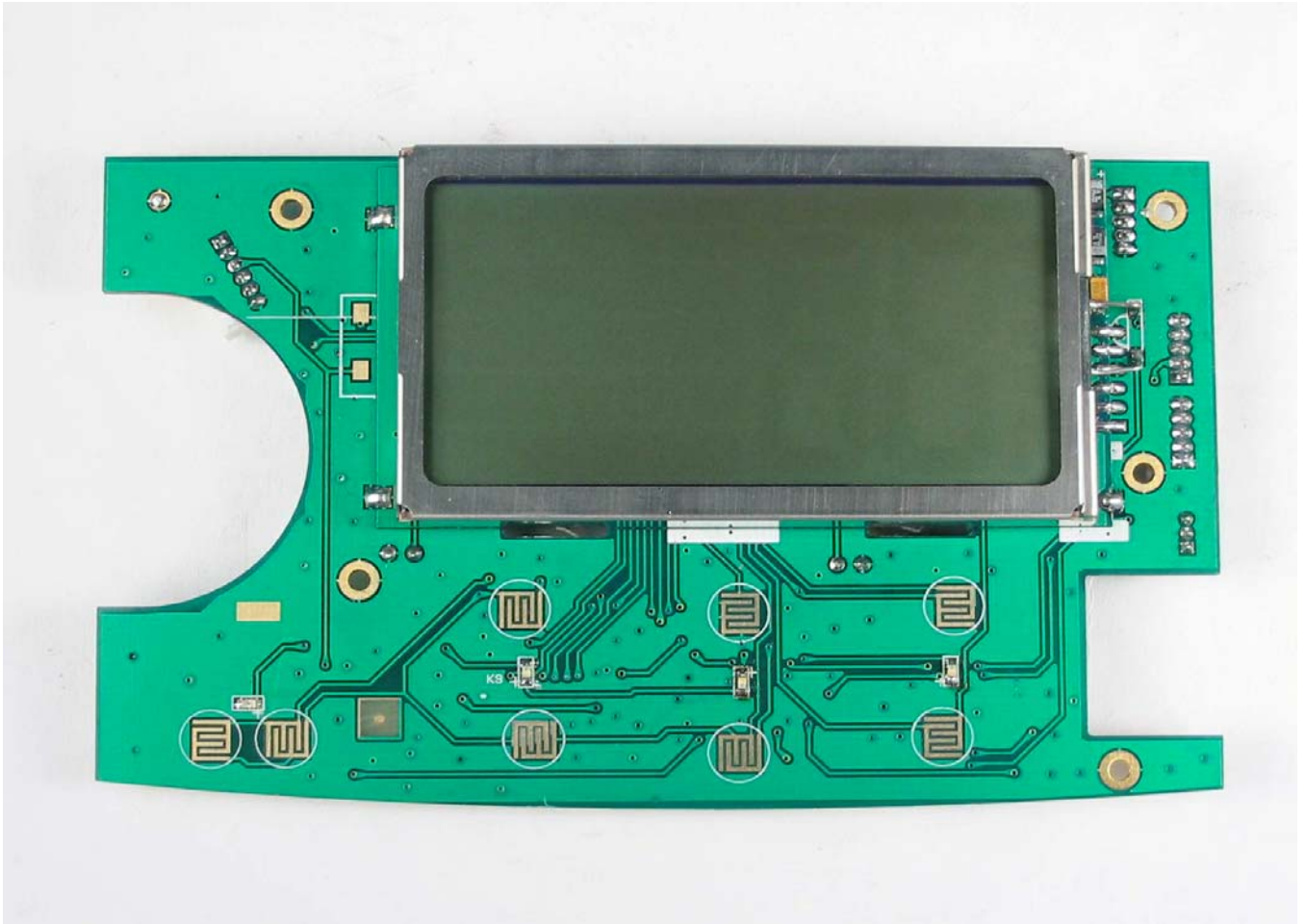
2nd top&gps filter top unit and assembly view

The image shows a green PCB populated with various electronic components. The central component is a Zynq-7010 SoC. Other components include a ZS3C3123, a ZS3C302, and a ZS3C301. The board has four mounting holes and a multi-pin connector on the left side. The date '04/01/12' is printed on the top right.

Page 2 of 13

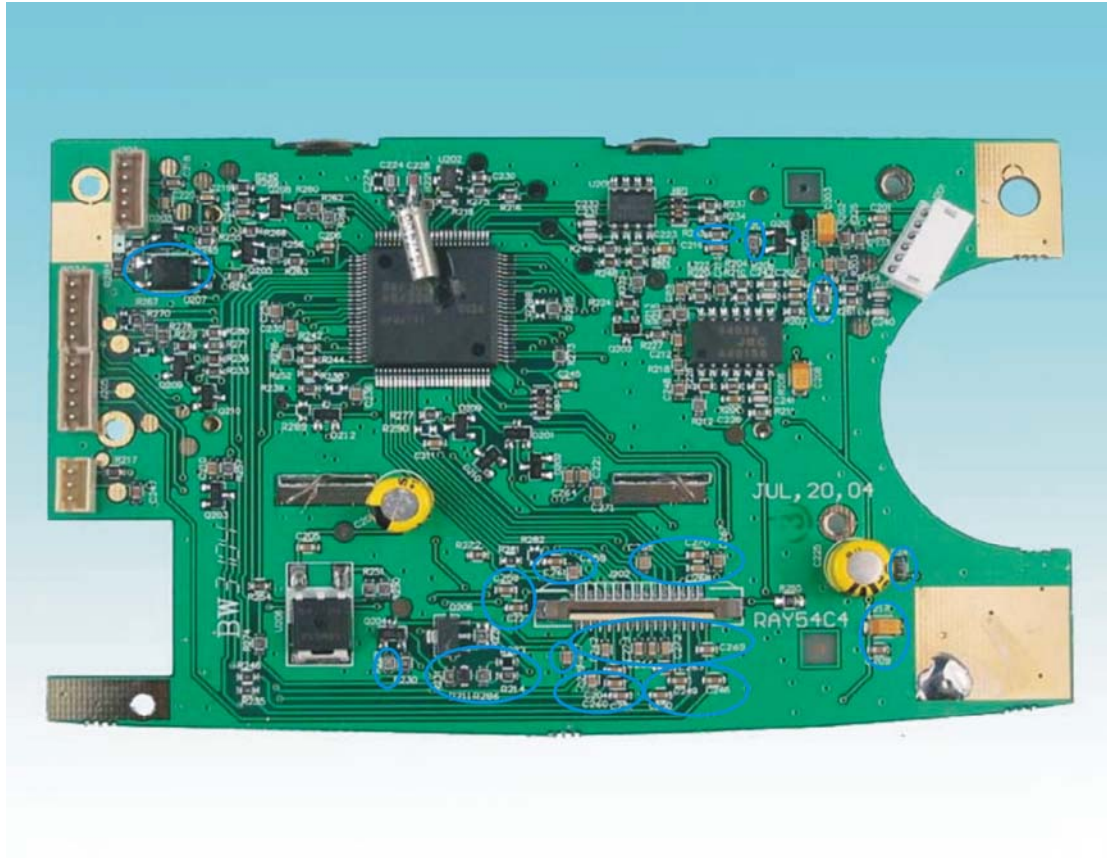


**PHOTOGRAPHS OF EQUIPMENT**



cpu and lcd unit top view

**PHOTOGRAPHS OF EQUIPMENT**



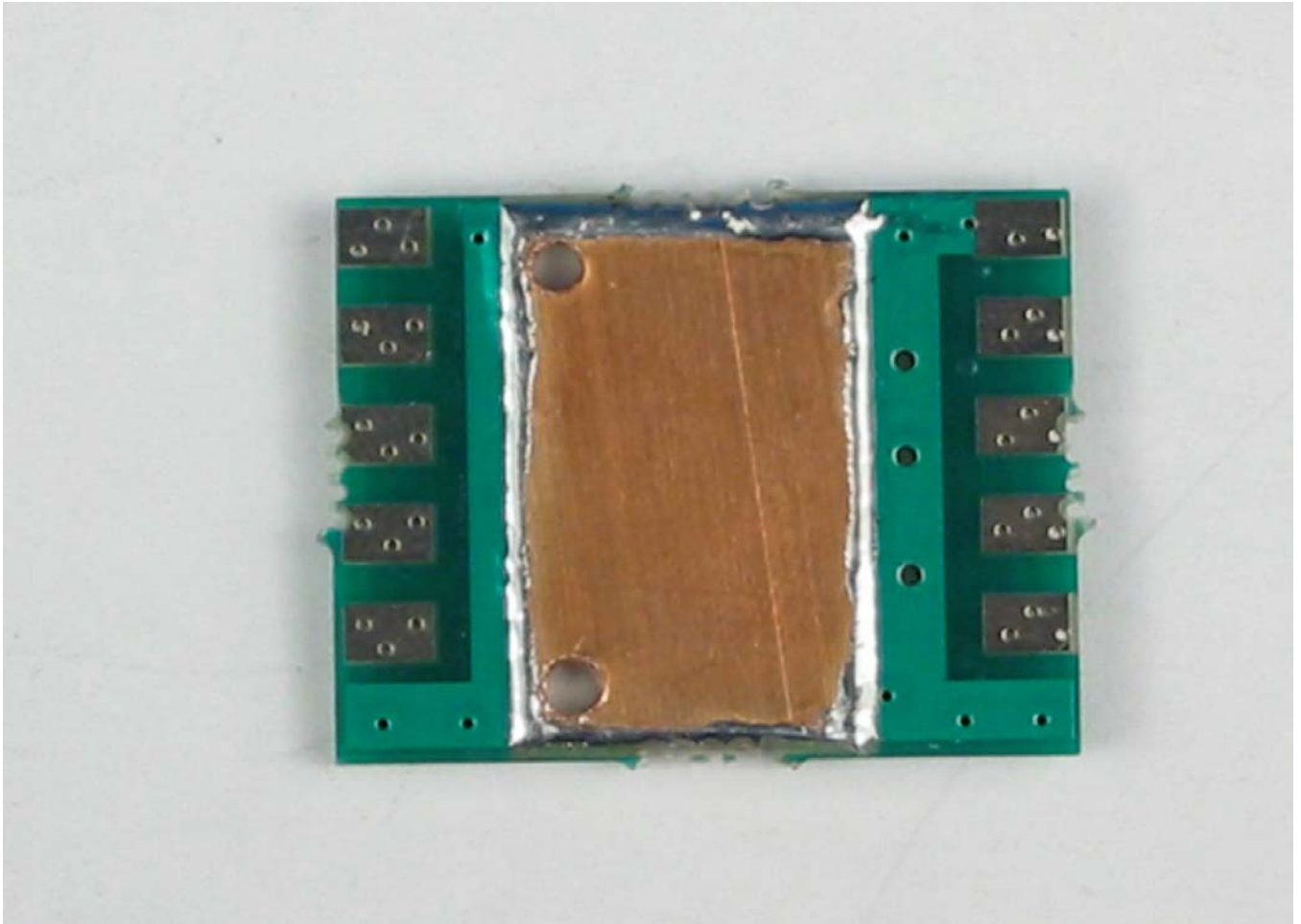
cpu and lcd unit Bottom view

**PHOTOGRAPHS OF EQUIPMENT**



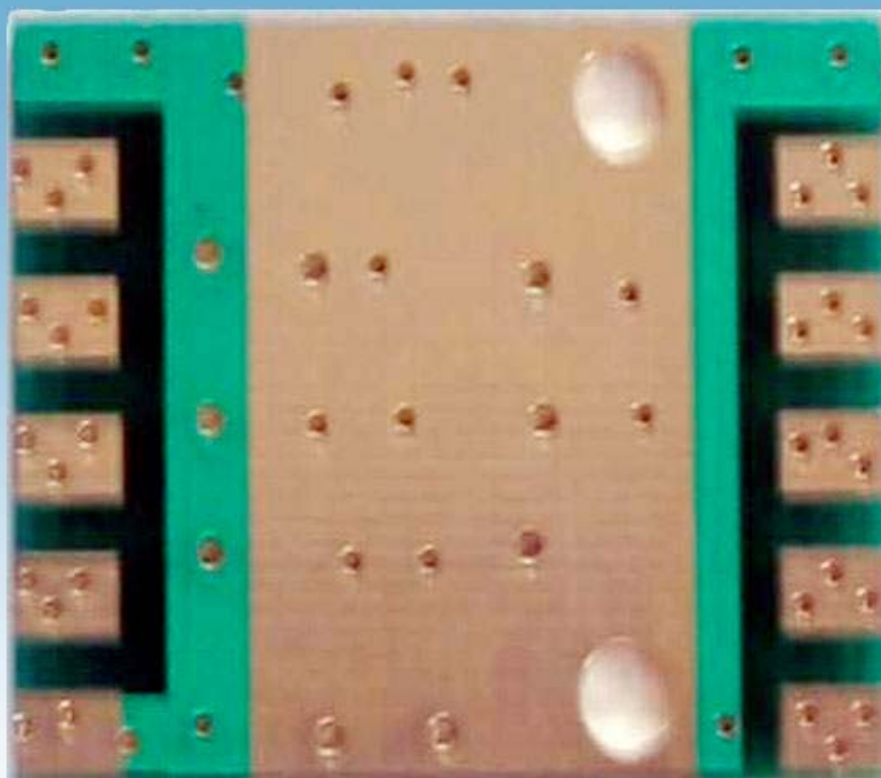
cpu unit bottom and assembly

**PHOTOGRAPHS OF EQUIPMENT**



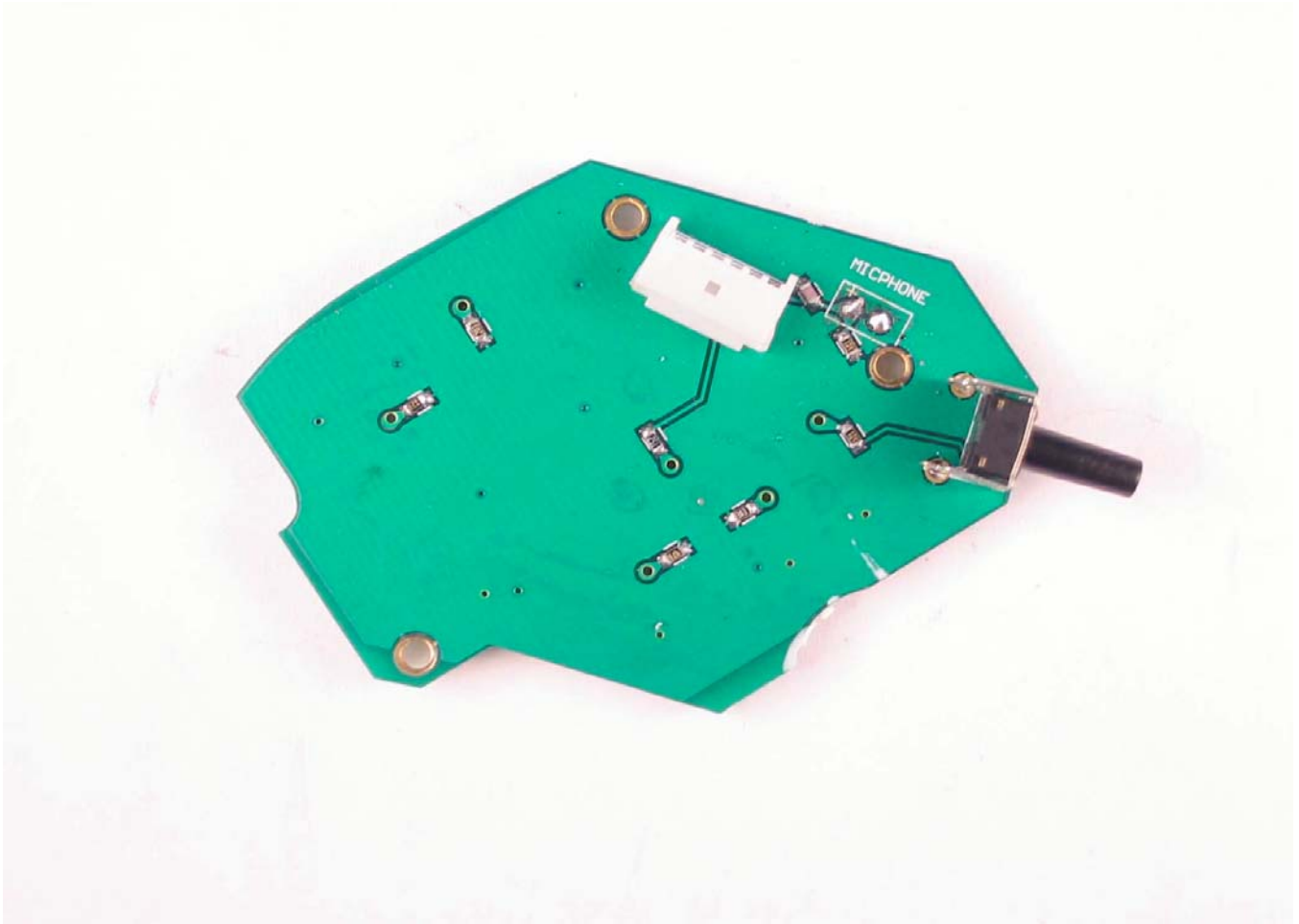
gps filter unit bottom view

**PHOTOGRAPHS OF EQUIPMENT**



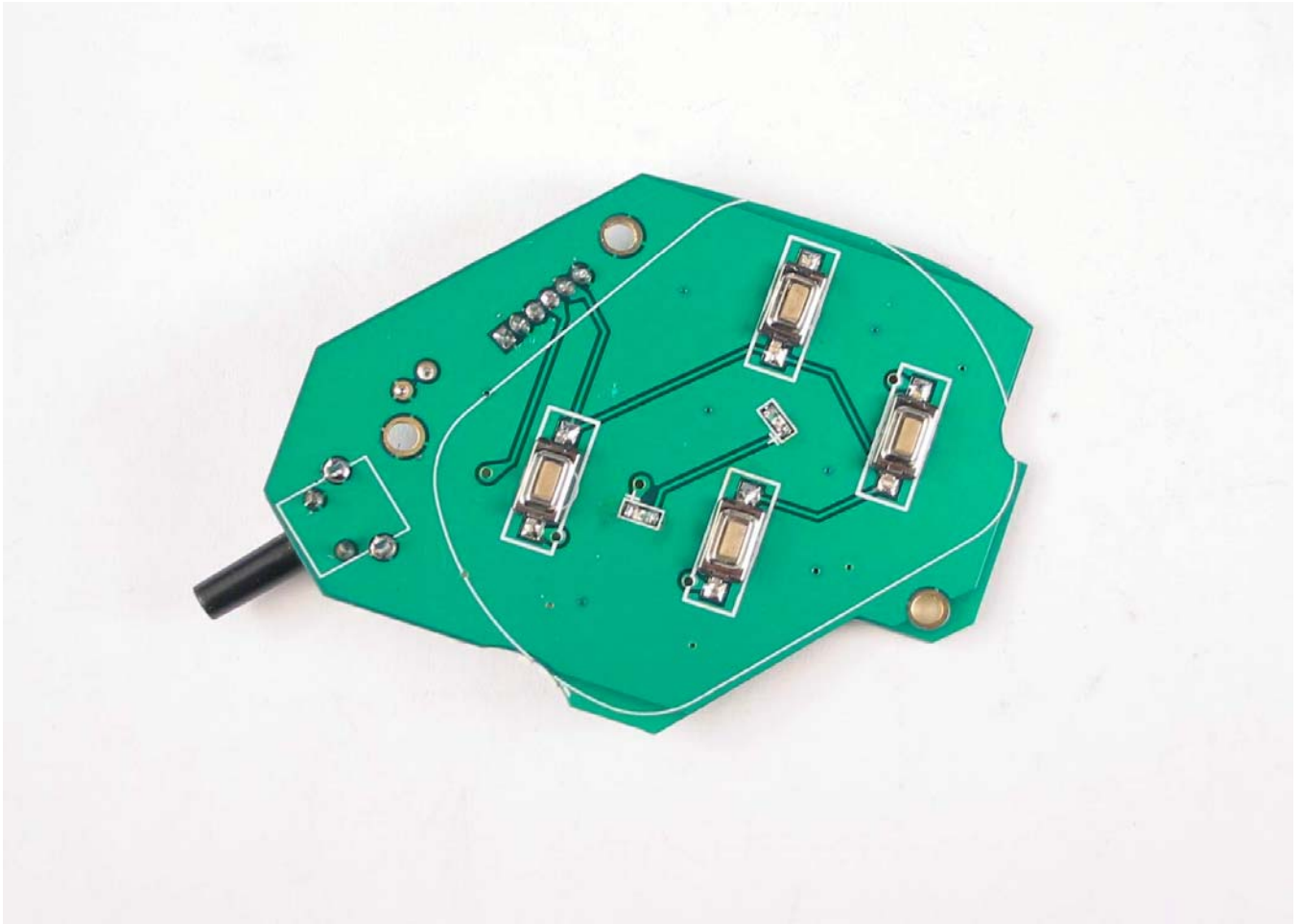
gps filter unit bottom view-1

**PHOTOGRAPHS OF EQUIPMENT**



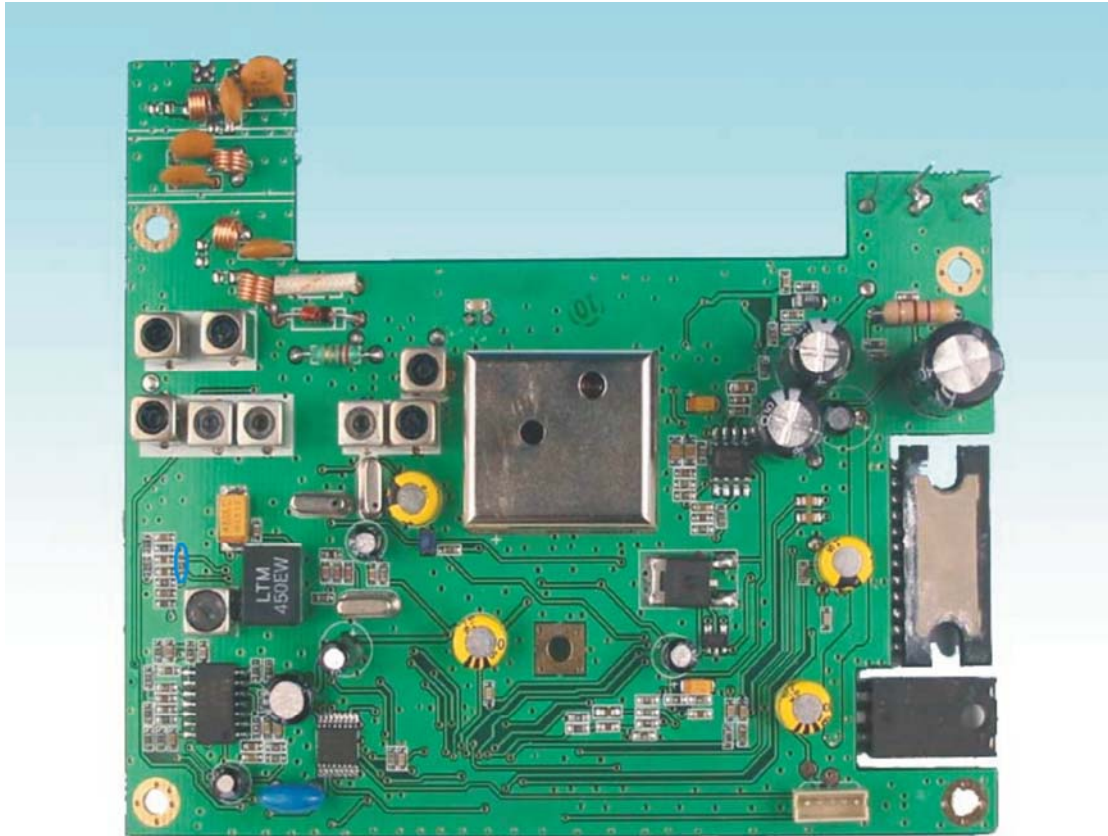
mic unit bottom view

**PHOTOGRAPHS OF EQUIPMENT**



mic unit top view

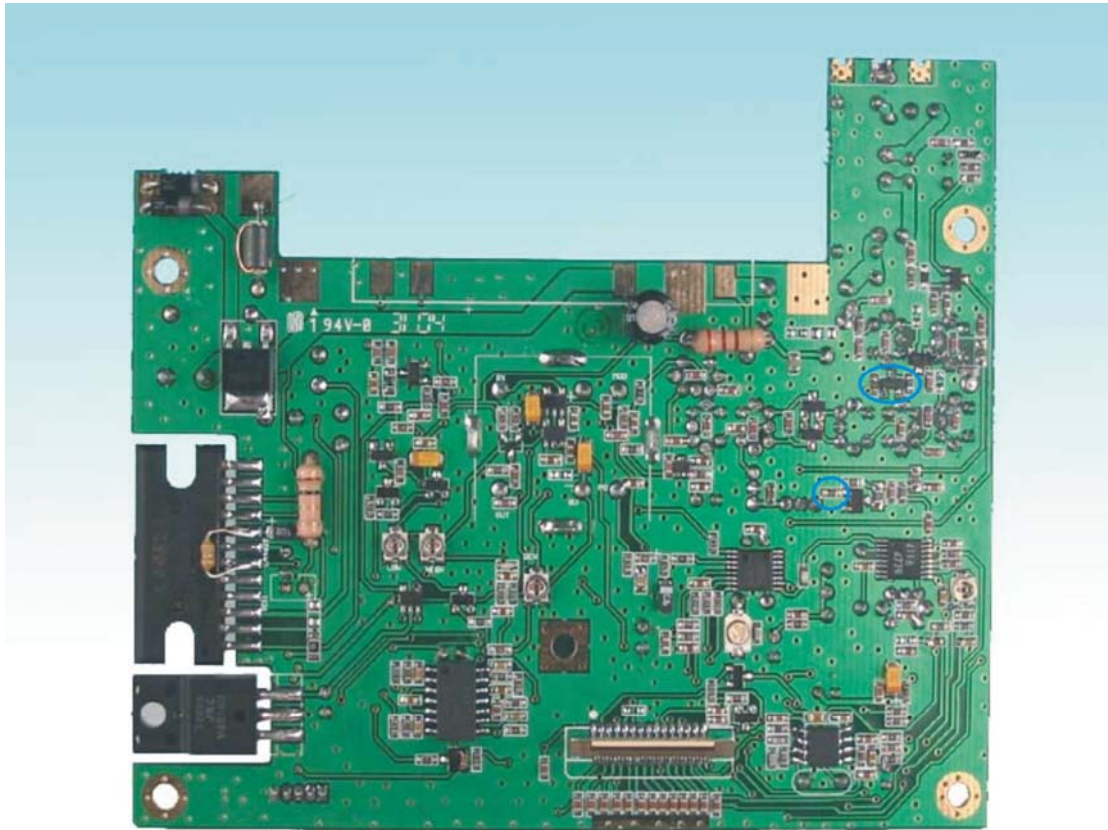
**PHOTOGRAPHS OF EQUIPMENT**



rf unit bottom view



rf unit top and assembly view



rf unit top view