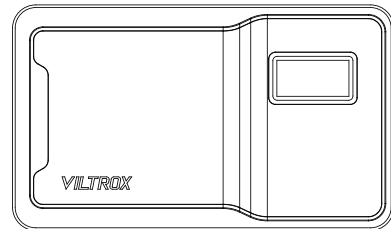


VILTROX

User Manual

## Retro 08X RGB fill light



Thanks for choosing VILTROX fill light!

Please read the operating instruction carefully so that you can know about and use all functions of the fill light.



Shenzhen Juaying Technology Co., Ltd.  
Tel: +86-755-287779024  
Email: info@viltrox.com  
Address: 1207, Floor 12, Block B, Chinto Science&Technology Building, Minzhi Street, Longhua, Shenzhen, Guangdong, China  
Production Address: Floor 3, Building 1, Simalou Science Park, No. 52-1, Juyuan Road, Qiuchang Town, Huiyang District, Huizhou, Guangdong, China

Executive standard: Q/JYKJ002-2019

Fax: 0755-28774730

Website: www.viltrox.com

### Product Functions

Retro 08X professional photographic light adopts 72pcs high index(Warm white and cold white)bulbs and 36pcs RGB color bulbs, compact size, light in weight, easy to carry, matching multiple colors, low power consumption, accurate color temperature, high CRI, various remote control modes and operation is convenient. It is applicable to portraits,micro film,interview and phone photography etc.

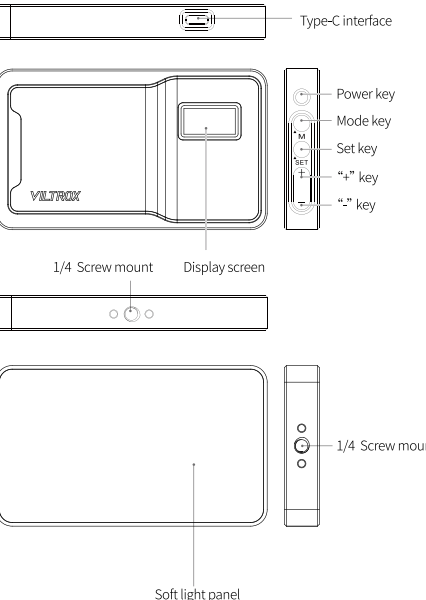
### Features

- RGB full color mode: HSL/RGBW/XY Coordinates /COL.
- 0-360° full-color, satisfying various light color requirements.
- 0%-100% high brightness fill-in light.
- Large color temperature range:2500K-8500K.
- Special effect of 26 kinds of scenarios: Realize more creative video shooting demands.
- 108 high-quality beads.
- Small and handy.
- 2 1/4 screw ports.
- The lithium battery has a capacity of 6000mAh and a long endurance.
- Multiple control methods: control panel ,mobile APP, remote control (User needs to purchase it separately).

### Attentions

1. Please keep this product out of children's reach.
2. Do not expose the product to eyes with a short distance.
3. Do not vibrate the product extensively; otherwise, it may become faulty, such as component damage.
4. Do not try to dismantle or repair the product alone; otherwise, it may become faulty.
5. Do not use the product near special substances, such as chemicals, combustible gas, etc. Please pay special attention to relevant warning identifications.
6. The product is not waterproof so please pay special attention to water resistance once being used in rainy and humid environment.
7. Do not cover any object that hinders heat dissipation on the product. A too high temperature may shorten service life of the product.
8. If there is no operation within 60s after the device is powered on, the screen will automatically shut down; The operation screen lights up again.

### Parts identification



### Operation Instructions

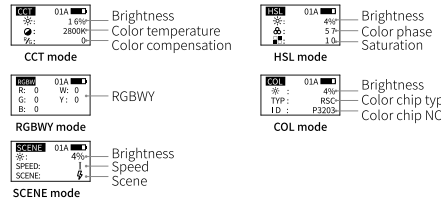
#### Startup

Long press < Power key > for 2s, turn on the power; Long press again to turn off.

#### Parameter setting

Short press <Mode key> to switch among 5 function interfaces;  
CCT→HSL→RGBW→COL→SCENE ;  
Short press <Set key> to select an item to be set;  
Short press <"+-" key"/"M" key> to increase /decrease the value.

#### Product interface



#### Bluetooth Mode



Long press <Mode key> to enter Bluetooth mode to set channel number and group number. Short press <Set key> to select an option to be adjusted. Short press<"+-" key"/"M" key> left and right to edit the value. Long press < Mode key > to exit from Bluetooth mode.

### Power Supply Mode

#### Startup status:

If the < > icon appears, the built-in battery supplies power; if the < > icon appears, the Type-C power source supplies power.

#### Shutdown status:

If the < > dynamic icon appears, the Type-C power source is charging;< > icon means battery is fully charged. (Note: Shut down the product prior to recharging.)

### Check accessories



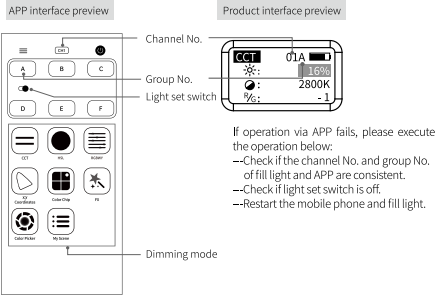
### Light Adjustment by APP

- 1.Apple system: Search "WeeelytePro" in "APP store" and download the APP to mobile phone and install it. You can also scan the QR code for downloading.
- 2.Android system: Scan the QR code to download the APP.



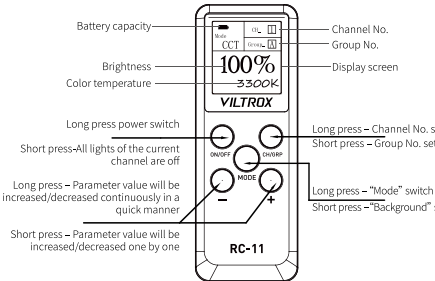
#### Connection mode:

- 1.Enable the Bluetooth of mobile phone first and then open "WeeelytePro" of APP.
- 2.Set the channel No. and group No. of APP in line with those of the product. (If the channel No. and group No. of the product are 1 and A, set the channel and group No. of APP as 1 and A; otherwise, inconsistent parameters will lead to control failure).



### Dimming via Remote Control (User needs to purchase it separately)

The product supports dimming by "RC-11" remote control. Remember to set channel No. and group No. prior to use (make ensure the channel No. and group No. of light and remote control are consistent). Note: Operate the remote control by referring to the operating instruction of remote control.



\*Please take the battery out of remote control that will not be used for a long time in order to prevent the leaked liquid of battery from damaging components.

### Operating Instructions of Remote Control

1. Long press RC-11 "Power switch" for 2 s and RC-11 power supply and display screen will be on.
2. Set the same "channel No." and "group No." by referring to "the controlled photography light". (LED photography light cannot be operated if the "channel No." and "group No." are different). Channel No. setting - Long press CH/GRP for 2 s and choose the channel required by +/- buttons; then press "MODE Button" for confirmation. Group No. setting - Short press "CH/GRP" to choose among A/B/C/D/E/F.
3. Long press "MODE" button to switch among four modes, including CCT/HSL/RGBW/SCENE. (\*The remote control has no COL mode, so COL mode of this equipment cannot be controlled)
4. Short press "MODE" to switch among options. Press +/- to set the value of options.
5. The power supply will shut down automatically if RC-11 is not operated 30 min after startup.

#### Tips:

If several lights are used for shooting, do not change the channels having been set at will after confirming them. Set different lights into groups, such as including Light A into Group A and Light B into Group B... Special reminder: Do not set different lights into different channels. It is troublesome to adjust light by switching among different channels frequently. The method above is wrong, which will also occupy the channels of others and easily lead to mutual interference.

Model	RC-11 remote control
Wireless frequency	2.4 GHz Bluetooth wireless control system
Distance of remote control (vacant)	30m
Group of wireless remote control	A,B, C, D, E and F
Channel	1-19
Standby time	Automatic shutdown, if no operation 30 min after startup
Ambient temperature	-10-50°C
Power supply	1.5V AAA battery
Dimensions	101 mm x 38 mm x 18 mm
Weight	About 37 g (excluding battery)

### Specification

Range of color temperature	2500-8500K (adjustable)
Range of brightness	0%-100% (adjustable)
Range of color phase	0-360° (adjustable)
Max. luminous flux	800lm
Max. illuminance	600lux(100%,5600K@0.5m )
Max. power	8W
Number of beads	Warm white + cold white: 72 PCS ; RGB: 36 PCS
Group/Channel	A, B, C, D, E , F/1-19
CRI (color rendering index)	RA ≥95 , TLCI ≥95
Power interface	Type-C 5V≡ 2A
Charging time	≈ 7h
Built-in lithium battery	3.7 V/6000mAh
Battery endurance	≈ 3.5h (5600K,Power:100%)
Remote control	RC-11 remote control (user needs to purchase it separately)
Dimensions	115mm × 68mm × 21.6mm
Weight	≈197.5g (bare light)

VILTROX

Warranty Card

VILTROX international warranty card is an important file. In case of requiring any warranty services during the warranty period, user needs to show the warranty card and original of invoice, both of which are stamped by the Company's authorized dealer. For any information about the change of our designated maintenance outlets and other information, please visit our website at [www.viltrox.com](http://www.viltrox.com). Please keep the warranty card properly, which will not be reissued once lost.

Product name	
Model	
Warranty period	
Date of purchase	
Contact	

Dealer's name/seal	
--------------------	--

#### FCC Warning

This device complies with part 15 of the FCC Rules. Operation is subject to the following two conditions:

- (1) This device may not cause harmful interference, and
- (2) this device must accept any interference received, including interference that may cause undesired operation.

Any Changes or modifications not expressly approved by the party responsible for compliance could void the user's authority to operate the equipment.

Note: This equipment has been tested and found to comply with the limits for a Class B digital device, pursuant to part 15 of the FCC Rules. These limits are designed to provide reasonable protection against harmful interference in a residential installation. This equipment generates uses and can radiate radio frequency energy and, if not installed and used in accordance with the instructions, may cause harmful interference to radio communications. However, there is no guarantee that interference will not occur in a particular installation. If this equipment does cause harmful interference to radio or television reception, which can be determined by turning the equipment off and on, the user is encouraged to try to correct the interference by one or more of the following measures:

- Reorient or relocate the receiving antenna.
  - Increase the separation between the equipment and receiver.
  - Connect the equipment into an outlet on a circuit different from that to which the receiver is connected.
  - Consult the dealer or an experienced radio/TV technician for help.
- The device has been evaluated to meet general RF exposure requirement. The device can be used in portable exposure condition without restriction.