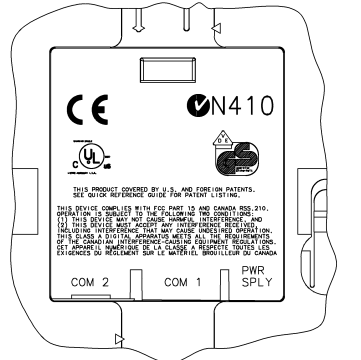
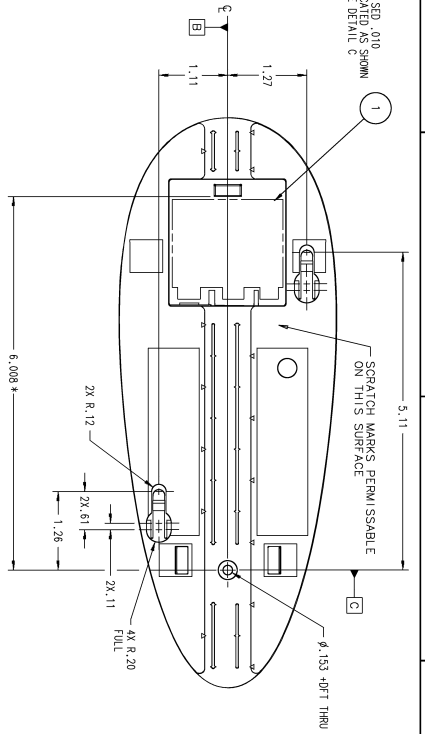
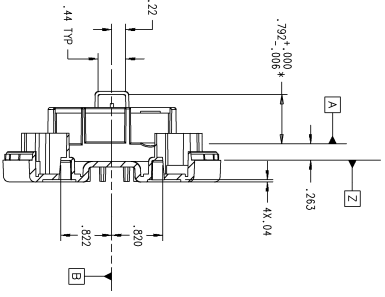


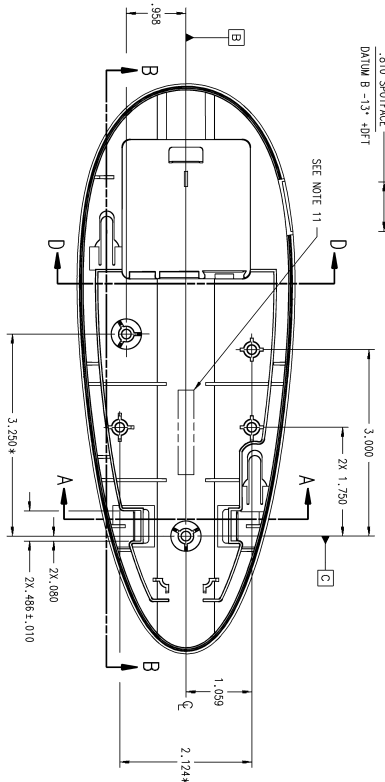
1  
RAISED .010  
LOCATED AS SHOWN  
ON THIS SURFACE  
SEE DETAIL C



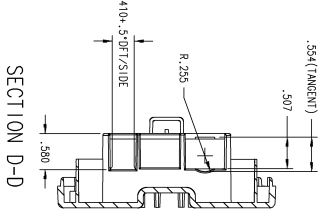
DETAIL C  
SCALE: 2/1



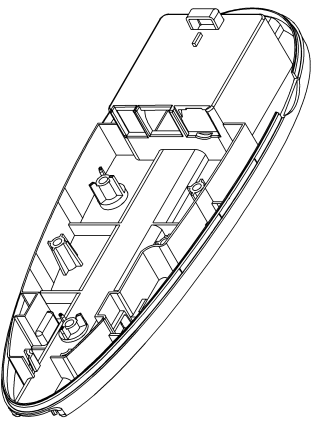
SECTION A-A



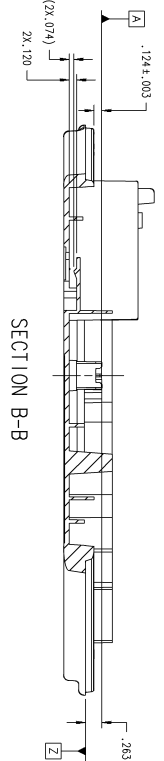
SECTION B-B



SECTION D-D



- NOTES : UNLESS OTHERWISE SPECIFIED
1. MATERIAL: SEE MATERIAL CHART.
  2. FINISH: EXTERIOR TO BE TEXTURED WITH MOLD-TECH 11010.
  3. IMPROVISH PER STI. SPECIFICATION SS-03800-S1-08. SURFACE CATEGORY A ON EXTERNAL SURFACES AND SURFACE CATEGORY D ON INTERNAL SURFACES.
  4. ELECTOR PADS SHALL BE FLUSH TO .003 BELOW SURFACE. GATE SHALL BE WITHIN .50,01 OF SURFACE.
  5. FLASH SHALL NOT EXCEED .002 THICKNESS. .003 EXTENSION.
  6. SHARP CORNERS AND EDGES SHOWN SHALL BE .005 RAD MAX. (NOT TO BE INSPECTED)
  7. PACKAGE ITEMS IN ACCORDANCE WITH STI GENERAL PACKAGING SPECIFICATION NO. 50-04100-013.
  8. UNDIMENSIONED FEATURES ARE TO MATCH 3D ELECTRONIC DATABASE WITHIN ±.005/IN.
  9. PARTS MUST BE FREE OF FOREIGN PARTICLES AND OTHER CONTAMINANTS.
  10. SPECIFIED DIMENSIONS (\*) ARE CRITICAL INSPECTION CRITERIA.
  11. IDENTIFY APPROX WHERE SHOWN WITH PART NUMBER AND LATEST REVISION LEVEL. REVISION LEVEL TO BE ON A REMOVABLE PIN OR INSERT.
  12. SEE SYMBOL SPECIFICATION SP-12869-01 FOR MANDATORY REQUIREMENTS REGARDING ENVIRONMENTAL COMPLIANCE (INCLUDING, BUT NOT LIMITED TO ROHS).



SECTION C-C

DASH NO.	TYPE	COLOR	REV
-00	GE PLASTICS LEXAN 141	CLEAR	-
-01	BAYER MATERIAL SCIENCE BAYBLEND FR110	CASH REGISTER WHITE	-
-02	BAYER MATERIAL SCIENCE BAYBLEND FR110	DURA GRAY MEDIUM	-
-03	BAYER MATERIAL SCIENCE BAYBLEND FR110	DURA GRAY DARK	-
-04	BAYER MATERIAL SCIENCE BAYBLEND FR110	BLACK	-
-05	BAYER MATERIAL SCIENCE BAYBLEND FR110	TRIGGER YELLOW	-
-06	BAYER MATERIAL SCIENCE BAYBLEND FR110	SYMBOL-DURA GRAY MAX	C
-07	BAYER MATERIAL SCIENCE BAYBLEND FR110	TWILIGHT BLACK	C

- PARTS LIST
- | ITEM | QTY | REF | BO-68173-01 | ARTWORK | BASE | REMARKS/REF. | SYMBOL |
|------|-----|-----|-------------|---------|------|--------------|--------|
| 1    |     |     |             |         |      |              |        |

UNLESS OTHERWISE SPECIFIED	DESCRIPTION	REVISIONS	DATE
UNLESS OTHERWISE SPECIFIED	DESCRIPTION	REVISIONS	DATE
UNLESS OTHERWISE SPECIFIED	DESCRIPTION	REVISIONS	DATE

UNLESS OTHERWISE SPECIFIED	DESCRIPTION	REVISIONS	DATE
UNLESS OTHERWISE SPECIFIED	DESCRIPTION	REVISIONS	DATE
UNLESS OTHERWISE SPECIFIED	DESCRIPTION	REVISIONS	DATE

UNLESS OTHERWISE SPECIFIED	DESCRIPTION	REVISIONS	DATE
UNLESS OTHERWISE SPECIFIED	DESCRIPTION	REVISIONS	DATE
UNLESS OTHERWISE SPECIFIED	DESCRIPTION	REVISIONS	DATE

UNLESS OTHERWISE SPECIFIED	DESCRIPTION	REVISIONS	DATE
UNLESS OTHERWISE SPECIFIED	DESCRIPTION	REVISIONS	DATE
UNLESS OTHERWISE SPECIFIED	DESCRIPTION	REVISIONS	DATE

UNLESS OTHERWISE SPECIFIED	DESCRIPTION	REVISIONS	DATE
UNLESS OTHERWISE SPECIFIED	DESCRIPTION	REVISIONS	DATE
UNLESS OTHERWISE SPECIFIED	DESCRIPTION	REVISIONS	DATE

UNLESS OTHERWISE SPECIFIED	DESCRIPTION	REVISIONS	DATE
UNLESS OTHERWISE SPECIFIED	DESCRIPTION	REVISIONS	DATE
UNLESS OTHERWISE SPECIFIED	DESCRIPTION	REVISIONS	DATE

UNLESS OTHERWISE SPECIFIED	DESCRIPTION	REVISIONS	DATE
UNLESS OTHERWISE SPECIFIED	DESCRIPTION	REVISIONS	DATE
UNLESS OTHERWISE SPECIFIED	DESCRIPTION	REVISIONS	DATE

UNLESS OTHERWISE SPECIFIED	DESCRIPTION	REVISIONS	DATE
UNLESS OTHERWISE SPECIFIED	DESCRIPTION	REVISIONS	DATE
UNLESS OTHERWISE SPECIFIED	DESCRIPTION	REVISIONS	DATE

UNLESS OTHERWISE SPECIFIED	DESCRIPTION	REVISIONS	DATE
UNLESS OTHERWISE SPECIFIED	DESCRIPTION	REVISIONS	DATE
UNLESS OTHERWISE SPECIFIED	DESCRIPTION	REVISIONS	DATE

UNLESS OTHERWISE SPECIFIED	DESCRIPTION	REVISIONS	DATE
UNLESS OTHERWISE SPECIFIED	DESCRIPTION	REVISIONS	DATE
UNLESS OTHERWISE SPECIFIED	DESCRIPTION	REVISIONS	DATE

REV	ZONE	DESCRIPTION	E.C.	BY	APPROV	DATE
A		RELEASED PER EDR #73601		MS	MS	10/24/06
B		REVISION MATERIAL IN MATERIAL CHART. 1. REVISION MATERIAL IN MATERIAL CHART. 2. ADDD NOTE 12 (BASE COMPLIANCE).		MS	MS	10/24/06
C	55	10X 2X 48X 20X TO FROM 17.002 TO 17.010 18X 2X 12X 18X TO FROM 17.002 TO 17.010		MS	MS	10/24/06

1/18 BASE COMPONENTS