



UBISLATE27Ci™ quick start guide

Thank you for purchasing the UbiSlate27Ci™

This ultra light and stylish Android™ tablet is your gateway to the internet. Enjoy the freedom of super - fast internet access anywhere there is a WiFi or GPRS network. Get on the web, check your e-mails, read the news, and buy or sell online whenever and wherever. Enjoy the many other functionalities of the Android tablet at your convenience as well. It is also a Multimedia Computer and a Bluetooth Phone. For your convenience, a full copy of the device user manual can be found on the desktop of the device in pdf form titled User Manual. You can also find a copy online at www.datawind.com.

Copyright

Copyright (c) 2012 Datawind Ltd.
This user manual is protected under international copyright laws. It may not be reproduced, distributed, translated, or transmitted in any form or by any means, mechanical or electronic, including, but not limited to photocopying, recording, scanning or storing in any information storage and retrieval system, without the express prior written consent of Datawind Ltd.

Trademarks

Datawind, UbiSlate27Ci as well as the Datawind and UbiSlate27Ci logos are registered trademarks of Datawind Ltd. Google, the Android Logo, Google Search™, Google Maps™, Google Mail™, YouTube™, and Google Talk™ are trademarks of Google, Inc.

Your UbiSlate27Ci™



Charging the Battery

Your device has a built-in battery. Before using the device for the first time, you must charge the battery for at least 6 - 8 hours. Use only Datawind approved chargers. Unauthorized chargers may cause damage to your device and/or may lead to overcharging and explosions. When your battery is low, the battery level indicator will be very thin. If the battery level reaches a critical level, the device will automatically turn off. Recharge the battery to continue use. Recharge the battery by first inserting the AC power cable into the charging lead and then plugging the head into a standard AC power outlet. After the charging is complete, unplug the charging head from the power outlet and remove the AC cable from the device.

UbiSurfer Dual Browser Comparison Chart

Features	UbiSurfer Browser	Android Browser
Email	✓ (Online)	✓ (Local)
Web Surfing	✓	✓
Web Acceleration	✓	
Instant Messenger	✓	✓
Social Networking	✓	✓
Online Banking	✓	✓
News/Weather/Sports	✓	✓
Graphics	✓	✓
Attachments		
PDF	✓ (Online)	✓ (Local)
MS-Office	✓ (Online)	✓ (Local)
Audio		✓
Video		✓

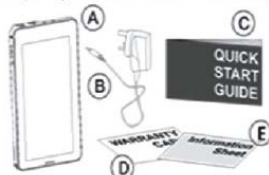
Status and Notification Icons explained

The Status bar appears at the top of every screen. It displays icons indicating that you've received notifications (on the left) and icons indicating the device's status (on the right), along with the current time. If you have more notifications than can fit in the status bar, a plus icon prompts you to open the Notifications panel to view them all. The following icons indicate the status of your device. Please review the table below.

- Home Page - Tap to return to the desktop
- Back - Tap to return to the last screen.
- Recent Apps - Tap here for a list of recently opened applications
- Volume - Tap here to decrease the volume of audio output
- Volume + - Tap here to increase the volume of audio output
- Shortcut - Tap here to enter the shortcuts menu (wallpaper / apps / settings)
- Applications - Tap here to go to the application menu
- MicroSD - This icon appears when a MicroSD card is inserted into the tablet
- USB - This icon appears when a USB device is connected to the tablet
- Android - This icon appears when the tablet is connected to a PC
- WiFi - This icon appears when the tablet is connected to a WiFi network
- Time - The current time is listed at the bottom right of the main screen
- Battery - This icon displays the level of battery power remaining
- Search - This icon will launch a search engine
- Internet - This icon will launch the UbiSurfer Internet Browser

GETTING STARTED

Check your product box for the following items:



A: Mobile Internet Device
C: Quick Start Guide

B: AC Adaptor
D: Warranty Card

The use of non-approved hardware accessory items or unapproved software may cause damage to the product or malfunctions not covered by the manufacturer's warranty.

- **Swipe:** Swipe up / down on the screen to scroll through a list. On some screens, you may be able to swipe left/right to change the view. To swipe, touch the screen and then quickly move your fingertip/stylus across the screen without lifting your fingertip/stylus. Do not pause on the screen with your fingertip/stylus at the initial point of contact or you may accidentally drag an item instead.
- **Tap and hold:** Some on-screen items have an alternate action if you touch and hold it (e.g., opening an alternate menu, or to activate the drag function). To touch and hold an item, touch the item and do not lift your fingertip/stylus until the action occurs. Tapping and holding an icon will allow you to move it once it appears large.

Note: It is very important that you do not touch the screen with a body part or any foreign object while switching on the device as this may interfere with the proper functioning of the device. Also, to avoid damage to the touch screen, do not use sharp tools. Do not allow the touch screen to come into contact with other electrical devices, or water. For optimal use, remove the screen protection film before using your device.

Lock or unlock the touch screen

The device, if not in use for some time, will automatically go into sleep mode and lock the touch screen. You can also manually lock the touch screen by quickly pressing (but not holding) the ON/OFF button. To unlock, turn on the screen by quickly pressing the ON/OFF button and dragging the lock icon to the right. If you set a screen lock, also enter your PIN or password.

Navigating the Menu System

The four most important icons when navigating the Menu system are the Home Page "□" icon, the Back "←" icon, the Applications "≡" icon, and the Shortcut "B" icon. When you tap the Home Page Icon, all screens will close and the home screen (with your wallpaper) will be seen. When you tap the Back Icon, it will back you out of an application or step backwards within an application. The Applications Icon will allow you to access the list of applications that you have installed on your tablet to be able to launch one of them. The Shortcut Icon will get you access to the Settings System, or access to manage the applications on your tablet.

The UbiSurfer Browser

The UbiSurfer Browser is the main browser on this tablet. Using this browser will speed up your surfing experience and can be used anywhere there is a WiFi or GPRS connection. To view the differences between the UbiSurfer browser and the Android browser, view the chart on page 3.

Locking the screen with Password

It is possible to lock the screen on your device with a password. To ensure the security of the device, the device shall not unlock unless the user provides the correct password. Please ensure that you remember this password.

Please note that if you forget the password, the device can again be made functional by reloading the software, however ALL stored data will be lost.

If you have more notifications than can fit in the status bar, a plus icon will prompt you to open the Notifications panel to view them all.

Using the MicroSD Memory Card

MicroSD Cards are storage spaces used to transport files from one device to another. This tablet supports many different types of cards up to 32GB in size, however not every MicroSD card will work in the tablet.

To insert the MicroSD card, simply push it into the tablet into the MicroSD card slot (it can only fit in one way, with the gold contacts facing up towards the side with the touch screen). To remove the MicroSD card, you must first go into System Settings (by tapping "≡" shortcut), then tap "Storage" and scroll down on the right hand side until you see Unmount SD card. Accept the unmount and then push down on the top of the MicroSD card and it will pop back up to be removed.

To access files on the MicroSD card, use the "File Manager" application described below.

Using the Touch Screen

Your device comes with a responsive touchscreen which works as follows:

- **Tap:** To activate an on-screen item (e.g., application icons, buttons, menu items, and the letter/symbols of the on-screen keyboard), simply tap them with your fingertip or stylus.
- **Double Tap:** Quickly tap the screen twice on a webpage or other application screen to zoom (the application must support the double-tap/zoom function). Within the browser, double-tapping a webpage section will cause the browser to zoom and fit that section to the width of the screen.
- **Drag and drop:** Drag an on-screen item to change its position (e.g., an application icon on the home screen). To drag an item, touch and hold it for a moment, then without lifting your fingertip/stylus, move your fingertip/stylus on the screen until the item reaches its target destination.



To connect to the Internet via the UbiSurfer browser, click on the Internet UbiSurfer icon on the Home Screen or via the menu system.

To enter URL's, simply click on the address bar and type it in and click on enter. For e.g., to go to the Google UK web page, type www.google.co.uk and click GO. The Google UK homepage will appear on the screen as shown above. Note that www and .com are defaults so if you want to visit www.facebook.com you just have to type in facebook and then click GO. On occasion, you may find multiple windows open. The number of open windows is written in a box at the top of the screen. If the number is greater than 1, you can close ALL extra windows by clicking Menu / Stop.

To add the website which you are currently on to your bookmarks, click on the favorites button at the top right side of the screen next to the address bar. Then click on Add and give it a name. From this menu system, you can also organize your favorites, access My Account from which you can add extra surfing time and roaming time, but also My Settings from which you can adjust things like image resolution. Other Functionality can be found in the menu system.

This includes:

- **Exit:** To close the program
- **Back:** To revert back to the last web page you were on
- **Forward:** To go to the next website
- **Refresh:** To refresh the page that you are currently on
- **Stop:** To stop loading the web page and to close all Pop-ups
- **Home:** To revert back to the UbiSurfer Browser Home Page
- **More:** To toggle between windows, show browser history, and access the system settings

Note: If you are inactive for several minutes, the browser will give you a 60 second warning before disconnecting your session. Minimizing the application DOES NOT close it. To exit, you must click Exit.

UbiMail

The advantage of UbiMail is that it can be used anywhere that your mobile phone works delivering you e-mail and access to viewing attachments without the need for a WiFi connection. Note that this is a web-based e-mail service and although you can view all files and attachments, they are only downloaded to the device in image form. It has been built for convenience of getting e-mails anywhere.

The application can be used for most IMAP/POP3 e-mail addresses, although some may require more information to set-up than others. Once set-up, creating, forwarding, editing and sending e-mails is easy via the on-screen menu or the menu system (hold HOME and press menu).

Copying and Pasting

When entering text, you can copy, cut or paste any text that you like to use in the same or another application. Here is the process to do this: Place the cursor where you want to start copying or cutting.

- Tap and hold anywhere in the text input field
- Choose Select text from the list of options
- Tap on the end location of the selection you would like to copy or cut.
- Tap and hold the highlighted text
- Select what you would like to do with the text
- Choose the application that you would like to paste to and tap and hold anywhere in the text entry field
- Select Paste to insert the text from the clipboard

Important Safety Information

Operating Environment

- Please remember to follow regulations governing the use of your UbiSlate27Ci. Always turn off your device whenever its use is forbidden or when it may cause interference or danger (i.e.) hospitals/ aircraft/ petrol stations, etc.
- All safety laws and regulations pertaining to the use of cell phones and two-way radios will apply to your use of the UbiSlate27Ci. We advise you to follow these Laws and Regulations when using the device. Places where YOU should NOT use your UbiSlate27Ci.
- Care should be taken to avoid using your UbiSlate27Ci in any environment in which your total attention is required, such as when DRIVING a vehicle or operating HEAVY MACHINERY.

● Switch off your UbiSlate27Ci when in an AIRCRAFT. The use of the device in an aircraft may be dangerous to the operation of the aircraft which may disrupt the network and may be illegal. Failure to observe all these instructions will void the Limited Warranty and may lead to suspension or denial of services to the offender or legal action or both.

● Turn off your UbiSlate27Ci when in an area with a potentially explosive atmosphere and follow all signs and instructions. Any kind of spark in such sensitive areas could cause an explosion or a fire resulting in physical injury or even death.

● There is a chance that certain potentially explosive areas might not be always clearly marked. Some examples are fueling areas, such as gasoline or petrol stations, below deck on boats, fuel or chemical transfer or storage facilities, vehicles using liquefied petroleum gas (such as propane or butane), areas where the air contains chemicals or particles, such as grain, dust, or metal powders, and any other area where you are normally advised to turn off your vehicle engine.

● HEALTH CARE FACILITIES: Remember to turn off your UbiSlate27Ci in Health Care facilities, especially when there are any regulations posted. Hospitals or Health care facilities may be using equipment that might be sensitive to RF.

● Remember to observe restrictions on the use of RADIO EQUIPMENT in fuel depots (fuel storage and distribution areas), chemicals plants, or where blasting operations are in progress.

● Operation of any RADIO TRANSMITTING EQUIPMENT including the UbiSlate7C+, could interfere with the functionality of insufficiently protected medical devices. Consult a physician or the manufacturer of the device, if you have any questions. Other electronic devices may also be subject to interference.

● If you are using a Pacemaker, it is in your best interest to consult with your physician or the manufacturer of your pacemaker, if you have any questions regarding the effect of RF signals on your pacemaker. If you are using a UbiSlate7C+ and have a pacemaker please make it a point to verify that you are using the UbiSlate7C+ device in accordance with the safety requirements of your pacemaker.

Radio Frequency Information

CE

The equipment has been tested and found to comply with the essential requirements and other relevant provisions of Directive 1999/5/EC. The Declaration of Conformity related to this product, and any other compliance matters can be obtained by sending a request to: compliance@datawind.com. These limits are designed to provide reasonable protection against harmful interference in a residential installation. This equipment generates, uses, and can radiate radio frequency energy and, if not installed and used in accordance with the instruction manual, may cause harmful interference to radio communications. However, there is no guarantee that interference will not occur in a particular installation. If this equipment does cause harmful interference to radio or television reception, which can be determined by turning the equipment off and on, the user is encouraged to try to correct the interference by one or more of the following measures:

- Reorient or relocate the receiving antenna
- Increase the separation between the equipment and receiver.
- Connect the equipment into an outlet on a circuit different from that to which the receiver is connected.
- Consult the dealer or an experienced technician for help.

FCC:

● This equipment has been tested and found to comply with the limits for a Class B digital device, pursuant to part 15 of the FCC Rules. This device complies with part 15 of the FCC Rules. Operation is subject to the following two conditions:

- This device may not cause harmful interference, and this device must accept any interference received, including interference that may cause undesired operation. A separation distance of the least 20 centimeters should be maintained between the transmitter's radiating structure(s) and the body of the user or nearby persons.

CAUTION:

Changes or modifications to this equipment not expressly approved by DataWind for compliance could void the user's authority to operate this equipment.

Additional Safety Guidelines

● CHILDREN: The UbiSlate7C+ and its accessories may contain small parts, or safety purpose please keep them out of the reach of small children.

● NETWORKS: At times, to transmit data files or messages, the UbiSlate7C+ may require a quality connection to the network. In some surroundings transmission of data files or messages may be delayed until such a connection is available.

● HEARING AIDS: Some parts of the device may be magnetic in nature. Metallic materials may be attracted to the device. As a precaution, persons with a hearing aid should not hold the device close to the ear with the hearing aid.

● MAGNETS: Avoid placing credit cards or other magnetic storage media near the device because information stored on them may be erased.

● LOCAL REGULATIONS: There is a chance that in some countries there may be some restrictions on using such wireless devices with or without encryption software. Please check with your local authorities.

● SHARP OBJECT AND LIQUIDS: Never try to push objects of any kind into the UbiSlate7C+ device or device accessories through openings. Such actions might cause a short circuit, a fire or electric shock.

● WATER/SPILLS: Avoid using the UbiSlate7C+ device or accessories near water e.g. near a shower or a sink or in swimming pool. Do not spill liquids of any kind on the UbiSlate7C+ device or accessories.

● EQUILIBRIUM: Avoid placing the UbiSlate7C+ device or any of its accessories on an unstable surface. There is a chance it may fall and cause an injury or cause serious damage to the UbiSlate7C+ device or device accessory.

● STRESS: It is advised that while using the UbiSlate27Ci device, take frequent breaks. If you experience any kind of fatigue, discomfort in your neck, shoulders, arms, wrists, hand (including thumbs and fingers), or other parts of the body when using the UbiSlate27Ci device, stop using it immediately. If discomfort persists, consult a physician.

● ELECTRICAL SAFETY: Do not use any other charger to charge your UbiSlate27Ci other than the charger provided with your UbiSlate27Ci standard packaging. Use of any other charger will void the warranty of the device and the charger.

● POWER CORDS: Always take extra care when using the UbiSlate27Ci device with any charging accessories, especially while routing the power cord in such a way that it reduces the risk of injury to others e.g. by tripping

or choking. Always protect the power cord from being squashed or walked on or pinched, particularly at plugs and the point where the power cord connects to the UbiSlate27Ci.

● **POWER PLUG:** To reduce the risk of damage to the cord or the plug, pull the plug rather than the cord when you disconnect the UbiSlate27Ci from the wall outlet.

● **GLASS PARTS:** This device contains glass components that upon breaking may splinter, crack or shatter and pose a safety risk until such a point that all glass shards are disposed of.

● **OVERLOADING:** While charging your UbiSlate27Ci avoid overloading the Wall outlets or extension cords. This might result in a risk of fire or electric shock.

● **EXTREME WEATHER:** Make sure to unplug charging accessories during lightning storms or when unused for long periods of time.

Radio Interference Information

The equipment has been tested and found to comply with the essential requirements and other relevant provisions of Directive 1999/5/EC.

These limits are designed to provide reasonable protection against harmful interference in residential installations. It is in compliance with the European Norm Product standard (CE) to demonstrate the compliance of mobile phones with the basic restrictions related to human exposure to electromagnetic fields. This equipment generates, uses, and radiates Radio Frequency Energy. If not installed and used in accordance with the user manual, it may cause harmful interference to radio communications. However, there is no guarantee that interference will not occur in a particular installation. This UbiSlate27Ci meets government requirements for exposure to radio waves. It is a radio transmitter and receiver, designed and manufactured, not to exceed the emission limits for exposure to radio frequency (RF) energy set by the Federal Communications Commission (FCC) of the US Government, Industry Canada of the Canadian Government (IC) & The Council of European Union (EU). These limits are part of comprehensive guidelines and establish permitted levels of RF energy for the general population. The guidelines are based on standards that were developed by independent scientific organizations through periodic and thorough evaluation of scientific studies. The standards include a substantial safety margin designed to assure the safety of all persons, regardless of age and health. If this equipment is causing harmful interference to radio or television reception, which can be determined by turning the equipment Off and On, the user is encouraged to try to correct the interference by one or more of the following measures:

● If the powering on process does not complete, reset the unit and try again.
● If very low battery charge, the WiFi module may stop working before the tablet. To continue using the WiFi module, the tablet should be plugged in to a charger. If the WiFi has stopped responding, you may need to power cycle the unit and keep it on the charger for an hour.

● If there is no sound coming from the speakers, check to see that the volume level is not set to 0, or check whether or not the audio file that you are listening to is not damaged by using it on another device or trying other files on this one.

● If you are having trouble copying files, check to see if your PC connection is set up properly, if the USB cable is properly attached, or whether there is enough available memory capacity on the drive in question.

● If the device ever needs to be RESET, please press and hold the ON/OFF button for at least 5 seconds.

For troubles that are not be resolved by reading this manual, please do not hesitate to contact our customer service team.

● Change the orientation or try to relocate the receiving antenna.

● Increase the separation between the equipment and receiver.

● Connect the equipment into an outlet on a circuit different from that to which the receiver is connected.

● Consult the dealer, manufacturer or an experienced and authorized technician for help.

To maintain compliance with FCC, IC and EU, RF exposure guidelines while using your UbiSlate27Ci device, use accessories that are supplied or approved by the manufacturer.

Use of accessories that are not explicitly approved by DataWind, might violate FCC, IC and EU, RF exposure guidelines and thus void any warranty applicable to the UbiSlate27Ci device.

Changes or modifications to this equipment not explicitly approved by DataWind Ltd for compliance could void the user's authority to operate this equipment.

Safely Disposing of the Device

The UbiSlate27Ci should not be placed in household waste bins. Please check local regulations for information on the disposal of electronic products in your area.

Troubleshooting

● This UbiSlate27Ci is a capacitive touch screen tablet. It requires a simple connection between your finger and the screen in order for the touch to be registered. At times instead of using your finger, a stylus made for capacitive touch screen devices may be used. Do not use a pointy object or one that could scratch the surface of the tablet.

● Should you find that the software on the UbiSlate27Ci does not respond to any commands, refuses to turn off or on, or any hardware component is not functioning properly, you may have to do hardware reset. This is accomplished (after turning off the device if possible) by inserting a pin into the reset key on the underside of the UbiSlate27Ci and pressing the pin until the reset pin clicks.

● If your tablet is not powering on try following things:

-Depress the power button until you feel a slight click then hold for 2-3 sec. Do not forcethe button beyond the click, as you risk damaging it.

-Plug in a charger, keep it charged at least 20 minutes and try again.

-Execute a hard reset of the unit (using a pin through the reset hole)

