



USER MANUAL

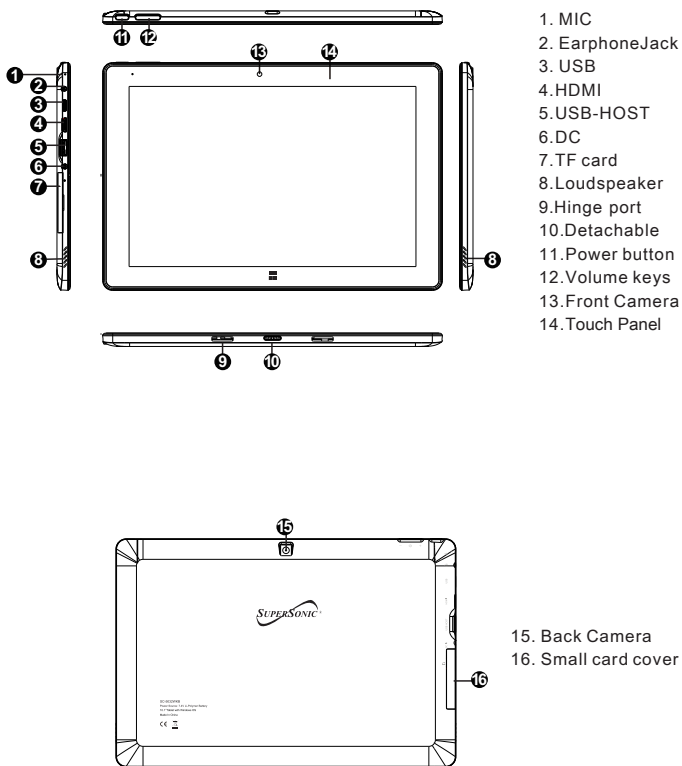
SC-5032WKB



I Precautions before use

- Avoid obstruction of the air inlet and outlet.
- The power indicator on the digital keyboard will remain lit after the power is turned on.
- The system will start up when it is used for the first time. Do not force power off to avoid data loss or damage to the system.

Descriptions



Precautions

Please follow the following safety precautions when using your device.

Do not use power cords, damaged plugs or loose plugs. Do not bend or damage the power cord. Do not touch the power cord with wet hands or pull the cord to disconnect the charger.

Do not use the device while it is charging or touch it with wet hands.

Do not hit or drop the charger and do not charge the battery with chargers that are not approved by the manufacturer.

Do not use your device during an electrical storm. Handle and discard batteries and chargers with care.

Do not handle damaged lithium ion batteries or that show leakage.

Do not use the device near a pacemaker. If possible, avoid using it at a distance inferior to 15 cm, because the device can interfere with the pacemaker.

Do not use the device in a hospital or near medical equipment that can be interfered by radio frequency.

If you use medical equipment always make sure they are protected against radio frequencies. If you use a hearing aid, let the manufacturer know to obtain further information about interference.

In potentially explosive environments, turn off the device.

Always respect the rules, instructions and warning signs

Do not use the device in or near other flammable chemicals refueling points (service stations) and / or explosives

Do not store or transport flammable liquids, gases or explosive materials in the same compartment as the device, its parts or accessories

If you want to charge the device, you must install an easily accessible power outlet.

The images in this manual are only for information purposes and may differ from the actual product.

The charging time is about 2~3 hours, and the battery life is about 3~4 hours for daily use.

For more information, visit <http://www.supersonicinc.com/>

II. Setup guide for the keyboard & case

Insert the tablet into the keyboard pogo-pin, if the Power Light is on, it means the keyboard is working.



The Tablet also support External Keyboard



III. Introduction to Desktop

1. Windows 11 Startup Menu: On the start screen, you can see many application programs you can select the programs you need to open.

You will need to log on to your Microsoft account for some application program to completely run.



2. Introduction to app Interface

Besides the application programs already fixed on the start screen, you can also add and start other software application programs.



VI. Basic Operations

1. Sleep, restart ,power on and power off

On the start screen you can find power options , select ‘Sleep’ then your tablet will sleep; select ‘Shut down’ then your tablet will power off; select ‘Restart’ then your tablet will reboot.



Other way to power on/off:

When your tablet is on,hold the power button for 3 seconds, then slide to shutdown; when your tablet is off ,hold the power button for 3~4 seconds, it will power on.



2. Bluetooth connect

Click the  then click the  to open the Bluetooth. Click the  then click “Settings”; enter to the setting interface, then click



Bluetooth & devices


to search other devices.





3. WIFI Connect



Click the  to open the Wi-Fi, and then choose the Wi-Fi you need to connect, enter the password.



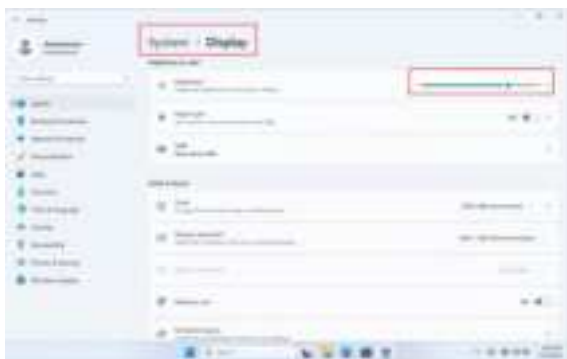
4. **Display Brightness and Power management** **Display brightness:**

There are two ways to change brightness.

A. Click icon on the taskbar and click the sun icon to switch the brightness.



B. Settings>System>Display>Brightness



Power and Battery management:

Settings>system>Power & battery



5. Add an account

Add a location account:

Settings>Accounts>Other users

Click “Add account” at “Add other user”



Microsoft account

Create a user for this PC

If this account is for a child or teenager, consider selecting **Back** and creating a Microsoft account. When younger family members log in with a Microsoft account, they'll have privacy protections focused on their age.

If you want to use a password, choose something that will be easy for you to remember but hard for others to guess.

What's going to use this PC?

Make it secure

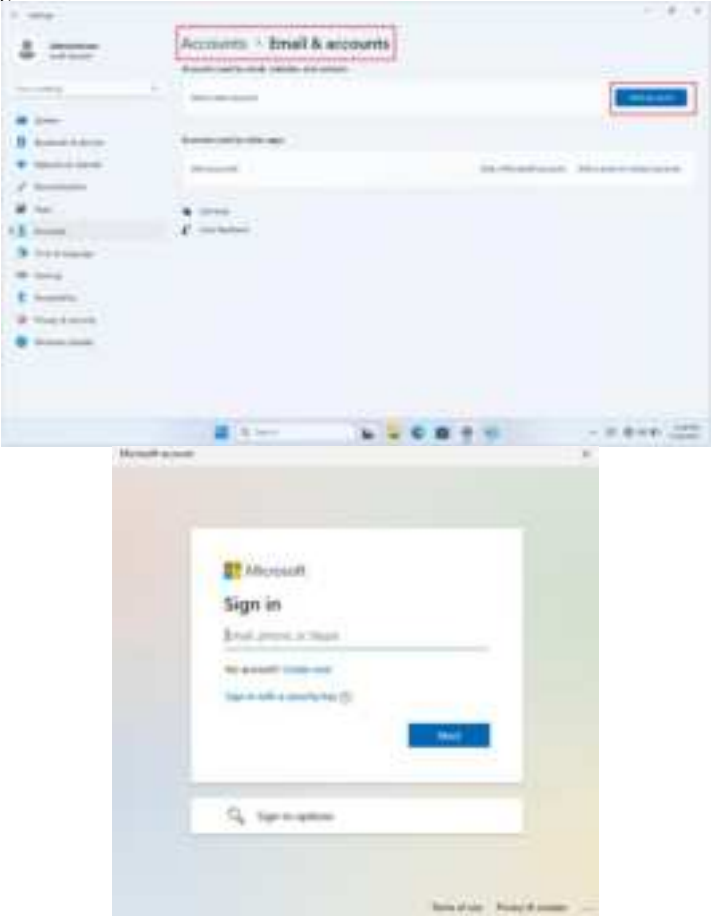
Next
Back

Add a Microsoft account:

Settings>Accounts>Email & accounts

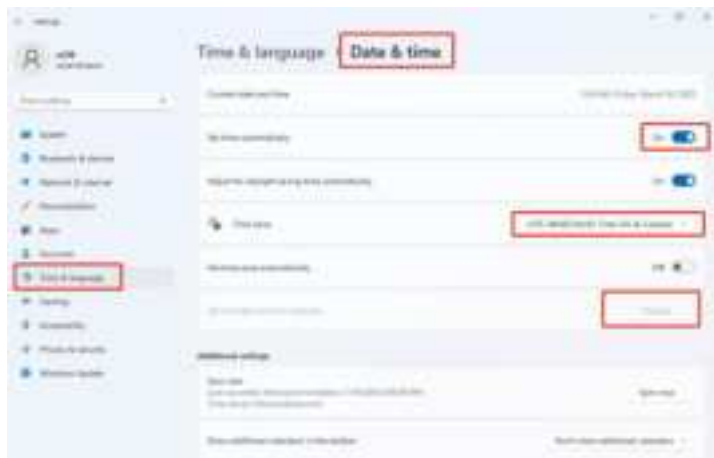
Click “Add a Microsoft account” and fill in a Microsoft account following the

guild.



6. Adjust the date and time
Date and time:

Settings>Time&Language>Date&time
“Set time automatically” option is on by default. The time will be set automatically when Internet is connected via wifi.
You can change the time zone through “time zone” option.



If you need to set the time by yourself, please turn off “Set time automatically” option and the “change” option will be active.

Change date and time



Region:

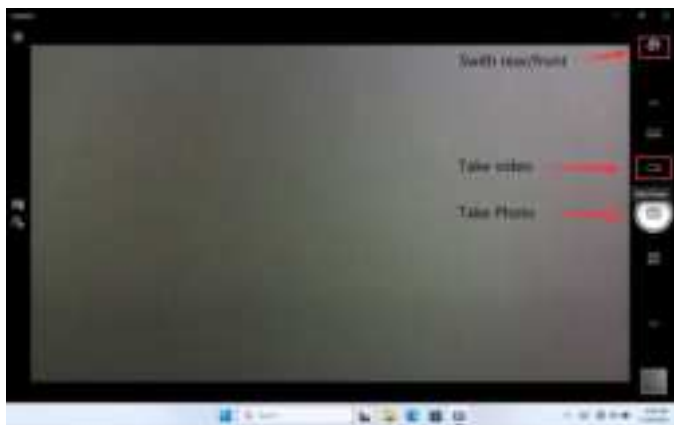
Settings>Time&Language> Language&Region



7. Camera

On the start screen , get into 'All apps' and click 'Camera'





8. HDMI Connect

Connect the tablet and Display device by MINI HDMI cable, set up the project options following the guide.

Tips: You can also open the project option by pressing 'Win+P' on the keyboard.

Display device and HDMI cable need to be purchased separately.

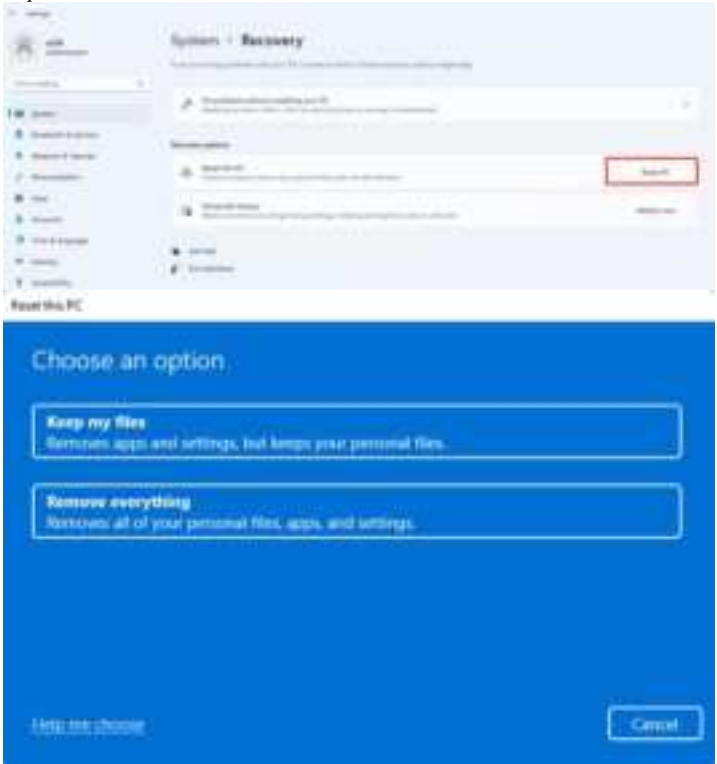




9. **Reset the PC**

Settings>system>Recovery

Click “Reset PC” and select one option you want. Then follow the guiding steps to reset this PC.



10. Troubleshoot

You can find almost troubleshoot tips in
Settings>system>Troubleshoot



IV . Specifications

Item	SC-5032WKB
Display	800x1280 IPS
OS	Windows 11
Input method	Touch screen, USB or bluetooth Keyboard and mouse
DDR RAM	4GB
Capacity	64GB
Audio	AAC,FLAC,MP3,OGG,WAV ,etc...(some need third party software support)
Video	3GP,MOV,MP4,MPG,AVI,etc...(some need third party software support)
E-book	Support
Wireless network	Support WIFI
Language	English (other languages need to be downloaded from Internet)
OTG	Support
Temperature	-20°C to 60°C
Battery	7.4V/3000mAh / (3.7V 6000mAh)
Charge Adapter	12V/2A

Package contents: AC adapter ; USB cable ;

2in1 Detachable Keyboard ; Manual .

Warranty

Basic Warranty Statement

Supersonic Inc. ("Supersonic") warrants this product to the original purchaser ONLY , to be free from defects in materials and workmanship under normal use, for ninety (90) DAYS from the date of original purchase. Proof of purchase (receipt) required.

Please visit <http://www.supersonicinc.com/warranty> for additional information.



This device complies with Part 15 of the FCC Rules. Operation is subject to the following two conditions: (1) This device may not cause harmful interference, (2) This device must accept any interference received, including interference that may cause undesired operation.

CAUTION

This device complies with part 15 of the FCC Rules. Operation is subject to the following two conditions: (1) This device may not cause harmful interference, and (2) this device must accept any interference received, including interference that may cause undesired operation.

Any changes or modifications not expressly approved by the party responsible for compliance could void the user's authority to operate the equipment.

NOTE: This equipment has been tested and found to comply with the limits for a Class B digital device, pursuant to Part 15 of the FCC Rules. These limits are designed to provide reasonable protection against harmful interference in a residential installation. This equipment generates, uses and can radiate radio frequency energy and, if not installed and used in accordance with the instructions, may cause harmful interference to radio communications. However, there is no guarantee that interference will not occur in a particular installation.

If this equipment does cause harmful interference to radio or television reception, which can be determined by turning the equipment off and on, the user is encouraged to try to correct the interference by one or more of the following measures:

- Reorient or relocate the receiving antenna.
- Increase the separation between the equipment and receiver.
- Connect the equipment into an outlet on a circuit different from that to which the receiver is connected.
- Consult the dealer or an experienced radio/TV technician for help.

The device has been evaluated to meet general RF exposure requirement. The device can be used in portable exposure condition without restriction.

Specific Absorption Rate (SAR) information:

This device meets the government's requirements for exposure to radio waves. The guidelines are based on standards that were developed by independent scientific organizations through periodic and thorough evaluation of scientific studies. The standards include a substantial safety margin designed to assure the safety of all persons regardless of age or health. FCC RF Exposure Information and Statement the SAR limit of USA (FCC) is 1.6 W/kg averaged over one gram of tissue. Device types: This device has also been tested against this SAR limit.

This device was tested for typical body-worn operations with the back of the This device kept 0mm from the body. To maintain compliance with FCC RF exposure requirements, use accessories that maintain an 0mm separation distance between the user's body and the back of This device. The use of belt clips, holsters and similar accessories should not contain metallic components in its assembly. The use of accessories that do not satisfy these requirements may not comply with FCC RF exposure requirements, and should be avoided.