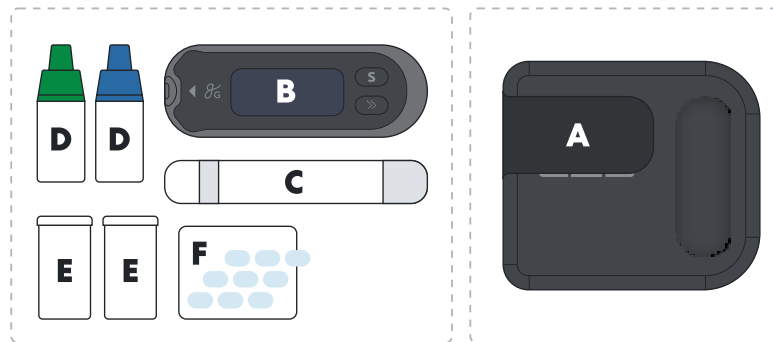


What's in the Box

In the smaller box on the left is a Greater Goods Essential Blood Glucose Meter (BGM), plus all the supplies you need for checking your glucose. On the right is a specially designed cellular case that securely transmits BGM readings to your Omada account via a cellular network. Together, they create a connected BGM — readings will appear in your Omada app, where you and your coach can see them.



- A. Case with cellular connection
- B. Greater Goods Essential BGM
- C. Lancing device
- D. Control Solution
- E. Test strips
- F. Lancets

How to Assemble Your Connected BGM

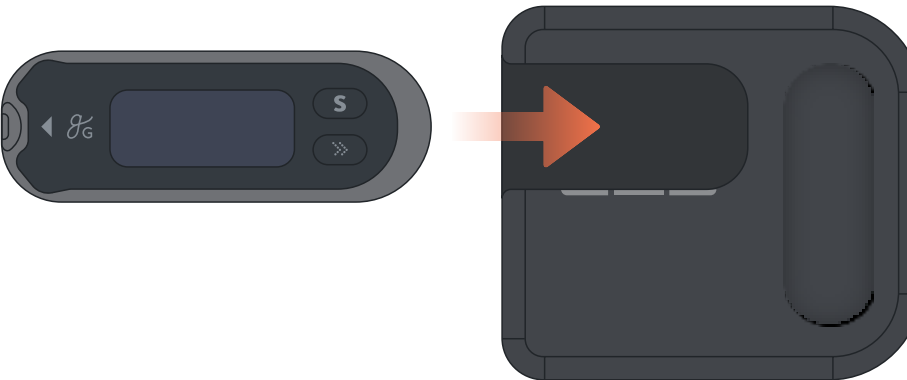
Putting the BGM and case together is a snap.

Step 1. Insert batteries into the BGM.

You'll find 2 coin cell batteries in the small box with your BGM. For detailed instructions on how to insert (or change) the batteries in the BGM, see the enclosed BGM manual.

Step 2. Slide the BGM into the cellular case.

Line up the right side of the BGM with the opening on the left side of the cellular case, as shown below. Slide the BGM in until you hear a click. (The buttons on the BGM are intentionally covered by the cellular case — you won't need them to operate the connected BGM.)



TIP: Keep the BGM in the cellular case when taking a reading to ensure that your reading is sent immediately to Omada.

Step 3. Remove the plastic tab from the back of the cellular case.

The cellular case is already loaded with 3 AAA batteries. To activate them, flip the cellular case over, and remove the plastic tab from the battery compartment. You now have a connected BGM!

Your connected BGM is ready to transmit your glucose readings to Omada. Please see the enclosed BGM manual for instructions on how to:

- 1 Take a blood glucose reading
- 2 Read the BGM display



TIP: After your first reading, you'll receive an email letting you know that your connected BGM is working.

Test Strips Delivered When You Need Them

Your BGM comes with an initial supply of test strips and lancets. While you're enrolled in Omada, we'll keep track of how often you use a test strip with your meter and how many strips you have left. When your supply is running low, we'll send you an email confirming that more strips and lancets are on the way, at no cost to you.



Understand Your Blood Glucose with the Help of Your Coach

As you start Omada, your coach will review your glucose readings each week and help you:



Identify trends and patterns



Troubleshoot highs and lows



Balance glucose with food and activity



Overcome everyday challenges

Your coach will address any very high or very low readings by the next business day. If you opt-in to 24/7 Blood Glucose Phone Support, you can receive more immediate support. See www.omadahealth.com/24-7 for details.

We're Here to Help

Have questions? Here are 3 ways to get more info:

- 1 Go to support.omadahealth.com
- 2 Send an email to support@omadahealth.com
- 3 Call us at (888) 409-8687

For more tips on measuring blood glucose, go to:
www.omadahealth.com/bg-meter



Copyright © 2020 Omada Health, Inc. Omada and the Omada logo are U.S. registered trademarks of Omada Health, Inc. BioTel Care® is a trademark of BioTelemetry, Inc. All rights reserved.

Glucose Levels in Omada

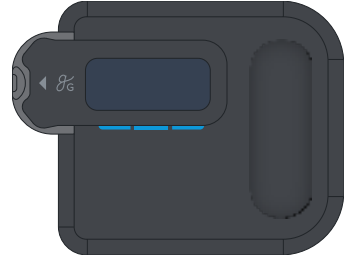
This table shows the glucose levels used in the Omada program.*

LEVEL	GLUCOSE (MG/DL)
Very High	>250
High	181–250
In Range	70 – 180
Low	54 – 69
Very Low	<54

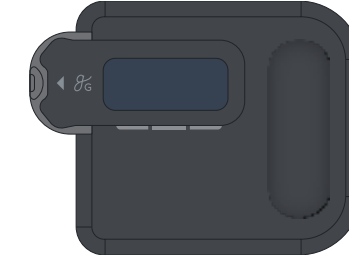
*Please note that the Greater Goods Essential BGM display does not label readings according to these levels. “HI” will appear on the meter display if a reading is >600, while “LO” will appear if a reading is <20.

Light Decoder

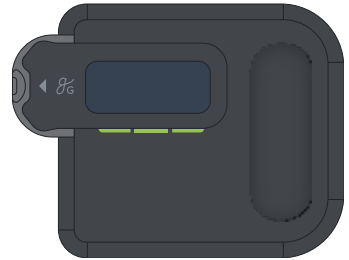
How to read the 3 small lights on your connected BGM.



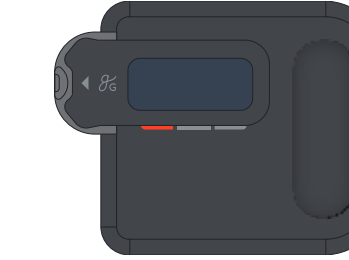
Three blue lights: Initial connection to Omada successful



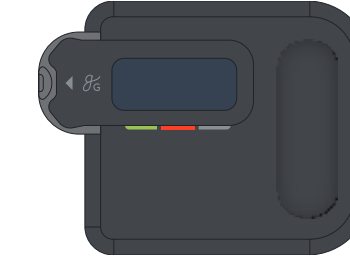
Lights off: Standby mode — insert test strip to wake BGM and take a reading



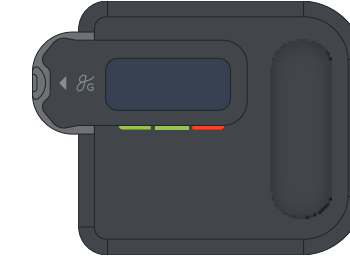
Three green lights: Reading successfully sent to Omada



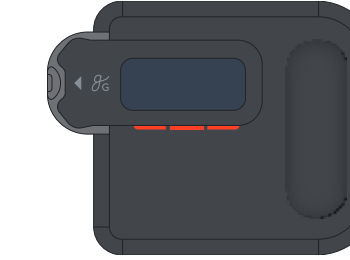
First light red: BGM disconnected from cellular case — try re-inserting the BGM



Second light red: Weak/no cellular signal — move to a location with a stronger signal



Third light red: Reading not sent (reasons can vary) — contact Omada support



Three red lights: Batteries in cellular case running low — insert 3 new AAA batteries



Get Started with Your Connected Blood Glucose Meter

Learn more from every fingerstick with automatic glucose tracking and a dedicated coach.