

## Intelligent WiFi Door Bell

### Instruction Manual



Thank you for choosing this product. Firstly, please read this manual thoroughly to fully understand and make good use of this IP camera.

#### Package content

Open the package and make sure the device/ parts below are in good shape.

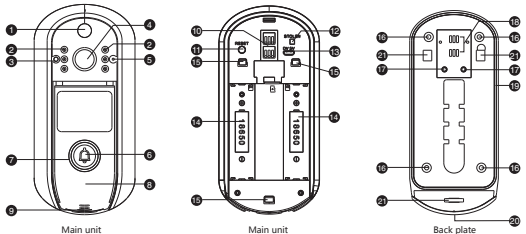
1. WiFi Doorbell X1
2. Wireless indoor bell receiver X1
3. Lithium ion batteries (type 18650) X2
4. Screw X1 + Hex wrench X1
5. Screw X4 + Plastic screw holder X4



#### Features

1. WiFi connection for remote monitoring via internet.
2. Voice pairing, simple and reliable.
3. 720P HD video.
4. Lens of wide angle with panoramic view
5. Infrared light for night vision
6. Built-in mic. and speaker for two-way voice communication.
7. Support up to 64G TF (micro SD) memory card for video recording.
8. Bell detect: when the bell button is pushed, the device will give out an alarm signal with its related video to the user's mobile phone.
9. PIR human detection and notification: when the PIR detect a human motion, it will send out alarm message to the user's mobile phone even if the APP doesn't open.
10. Time-shift playback: easily and quickly allocate/ playback the desired video recorded at an elapsed time point by shifting the time axis.
11. The device can be powered by rechargeable battery or 8~24V AC supply.
12. When use with a wireless indoor bell receiver, the bell receiver will emit an audio sound when the bell button is pushed to inform the home member to answer the door.
13. The device is IP4 water resistant, can be installed without rain shelf.
14. Sleep mode for battery saving. It can be waked up by APP, PIR detection and push of the door bell button. After wake up, it will stay for 30 seconds and then enter the sleep mode again.

#### Parts and Control



- |                        |                                 |  |
|------------------------|---------------------------------|--|
| 1. PIR sensor          | 9. Speaker                      | 16. Fixing hole (4X) of back plate     |
| 2. Night vision LED's  | 10. Contacts of 8V~24V AC souce | 17. Terminals of 8V~24V AC input,2X    |
| 3. Light sensor        | 11. Reset button                | 18. Contacts of 8V~24V AC source       |
| 4. Lens of wide angle  | 12. Anti stolen button          | 19. Water seal ring                    |
| 5. Microphone          | 13. Micro USB charging port     | 20. Screw hole to fix main unit        |
| 6. Button of door bell | 14. Battery compartment 2X      | 21. Supporting hole (3X) for main unit |
| 7. Operation indicator | 15. Supporting hook,3X          |  |
| 8. Top cover           |                                 |  |

#### Mount the Device (the WiFi door bell)

The device has to be installed at the place where a WiFi is available.

##### A. Install the back plate

###### A-1 To install on a concrete wall

1. Allocate and mark 4 points on the wall for the 4 fixing hole on the back plate.
2. At the 4 marks, drill 4 holes (6mm in diameter) on the wall and then push in the 4 plastic screw holders included with a hammer (not included).
3. Install the back plate to the 4 plastic screw holders with the included 4 screws.
4. Connect and screw the 8~24VAC wire terminals to the 2 points of 17 TP1and TP2 on the back plate. If no AC wires to be connected, please skip this step.

###### A-2 To install on a wooden door

1. Install the back plate on to the door by inserting the 4 included screws into the fixing holes on the back plate and screw tight to the door.

2. Connect and screw the 8~24VAC wire terminals to the 2 points of 17 TP1and TP2 on the back plate. If no AC wires to be connected, please skip this step.

##### B. Install batteries

Install the 2 rechargeable batteries on the back of main unit.

##### C. Set up and pair the device

Please see and go through the section E to set up and pair the device.

##### D. Attach the main unit to the back plate

1. Insert the 3 supporting hooks on the main unit into the supporting hole on the back plate and pull the main unit down to locate it on the back plate.
2. Screw the screw hole with the included screw and hex wrench and the main unit is tightly fastened to the back plane.

##### E. Set up and pair the device

###### 1. Downloading and Installing the App.

Open the App Store (for iOS) or the Google Play Store(for Android) on your mobile devices.  
Search for "UBell" or scan the following QR Code to download and install to your device.



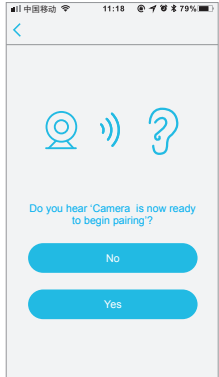
##### 2. Setting up the App

Before you begin...

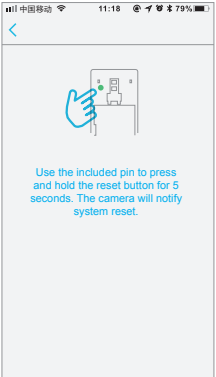
> Make sure the UBell app is installed to your device.

> Make sure that your device is connected to a 2.4GHz Wi-Fi network, NOT a 5GHz network.

- 3.) Before setup, make sure the device is in configuration — with a voice prompt "The camera is now ready to begin pairing".

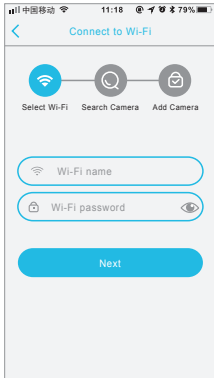


- 4.) If you didn't hear the voice prompt, press and hold the reset button for 5 seconds. Release after the LED indicator turned off , and the device will restart to configure automatically.



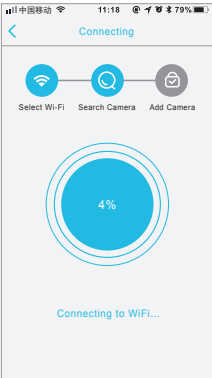
- 5.) The name of the Wi-Fi network will automatically be filled in, enter the Wi-Fi password. And adjust the volume of your device to a reasonable level then tap "Next".

Note: If your mobile device was connected to the same Wi-Fi network before, the APP will fill the password auto matically and you don't have to enter the password.

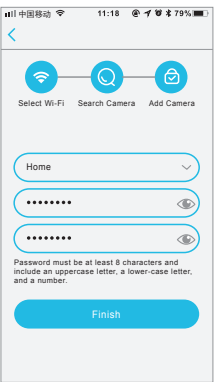


- 6.) The mobile device will emit sound waves, keep quiet and make sure about 30cm distance between the phone and the device , and waiting for the device to configure the network.

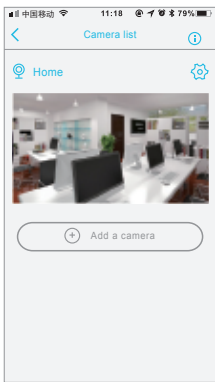
If your camera fails to connect, reset the camera and repeat all the steps(please see the previous section, Resetting the Camera)



- 7.) After a successful connection, you will be prompted to create a name and password for your camera. The password must be at least 8 characters and include an uppercase letter, a lower-case letter, and a number.

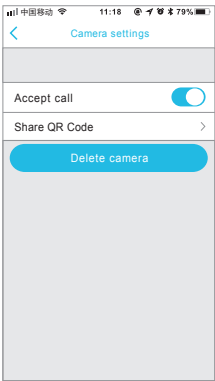


- 8.) Setup completed! The APP will enter the device list interface automatically. Congratulations! The device is ready for use.



#### 3.The Wi-Fi Doorbell Features

In the device list section, please click settings icon which at the top right corner to enter the device settings.2. Voice pairing, simple and reliable.



##### Accept call

Turn on - Receive the notification if somebody press the doorbell or call out.  
Turn off - Will not receive the tifications for accept call.

##### Share QR Code

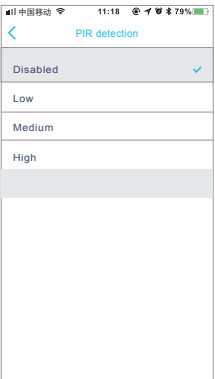
Send the QR code to share the device to your friends and family or someone that you want to share.

##### Delete camera

The mobile device will not receive the notifications after you delete the camera. But the camera still works and the other connected mobile devices still able to receive the notifications.

#### PIR Detection Instructions

The device can support the PIR detection. Tap "PIR detection" to open the submenus.



##### Disabled - Close the PIR function.

Low - The device will be able to wake up after device detects human for 7 seconds. Device start to take videos and call the mobile device at the same time.

Medium - The device will be able to wake up after device detects human for 5 seconds. Device start to take videos and call the mobile device at the same time.

High - In the state, the device will be able to detect if keep the state what be detected at least 1 second, and the device start to take videos and call to phones at the same time.

Note: In crowded environment, it is recommended to close or set the device to low sensitivity to reduce device arousal and call times to extend battery life.

#### 4.Note for using

- 1.) The device is powered by rechargeable lithium batteries. With fully charged, the battery life approx be six months. The mobile device APP will be prompted while the battery voltage is low. Please charge the device after received the reminder.

- 2.) Keep the camera in range of your router.

Make sure to pick a place within range of your network. Thick or insulated doors can greatly reduce the strength of your Wi-Fi signal even if your router is close by, so you should try streaming video before you mount your camera.

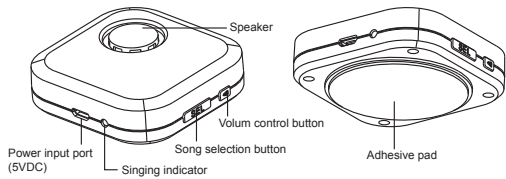
- 3.) The device is a low power consumption intelligent products, can support remote wake up from the APP, PIR human detection, press doorbell wake up. The device will be works for 30 seconds after wake up then be in the resting state automatically and until to next waking up.

#### Indoor Wireless Bell Receiver

##### Features and Specification

- Wirelessly activated by the signal from the intelligent door bell
- 24 songs for selection to tell that an intelligent door bell is pushed
- 4 volume levels
- Powered by a wall adapter/ charger with 5V DC output.
- The unit (the Indoor Wireless Bell Receiver) can be synchronized with up to 4 different intelligent door bells.

##### Parts and Control of the Unit



##### Mounting

1. Clean the spot to where the unit is to be mounted
2. Peel off the protection paper on the Adhesive Pad
3. Mount the unit by adhering the unit to the cleaned spot.

##### Power On

Connect a wall adapter/ charger with output of 1A or more to the micro USB power input port on the unit.

##### Operation Procedure

###### • Synchronize the Unit with an Intelligent Door Bell

The unit can wirelessly work with an intelligent door bell forever once the unit is synchronized with the intelligent door bell.

1. Power on the unit
2. Press and hold the Volume Control button on the unit
3. Push the button on the intelligent door bell
4. Release the Volume Control button on the unit when the unit emits the song that responses to the push of the intelligent door bell and the synchronization is complete.

##### • Select a Song

Repeatedly press the SEL button to select a song that is to response to the push of the button on the intelligent door bell.

##### • Adjust Volume

Repeatedly press the Volume Control button to adjust the volume. There are 4 volume levels. Each pressing on the button changes the volume level of the unit.

**Note:** Upon power on, the volume is set at the highest level.

##### FCC Statement

Changes or modifications not expressly approved by the party responsible for compliance could void the user's authority to operate the equipment.

This device complies with Part 15 of the FCC Rules. Operation is subject to the following two conditions: (1) this device may not cause harmful interference, and (2) this device must accept any interference received, including interference that may cause undesired operation.

This equipment has been tested and found to comply with the limits for a Class B digital device, pursuant to Part 15 of the FCC Rules.

These limits are designed to provide reasonable protection against harmful interference in a residential installation. This equipment generates, uses and can radiate radio frequency energy and, if not installed and used in accordance with the instructions, may cause harmful interference to radio communications. However, there is no guarantee that interference will not occur in a particular installation. If this equipment does cause harmful interference to radio or television reception, which can be determined by turning the equipment off and on, the user is encouraged to try to correct the interference by one or more of the following measures:

- Reorient or relocate the receiving antenna.
- Increase the separation between the equipment and receiver.
- Connect the equipment into an outlet on a circuit different from that to which the receiver is connected.
- Consult the dealer or an experienced radio/TV technician for help.

This equipment complies with the FCC RF radiation exposure limits set forth for an uncontrolled environment. This equipment should be installed and operated with a minimum distance of 20 centimeters between the radiator and your body.