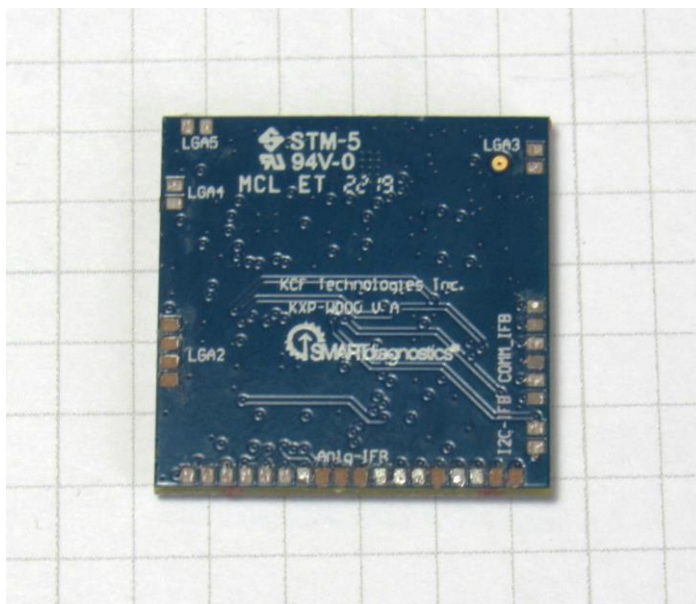
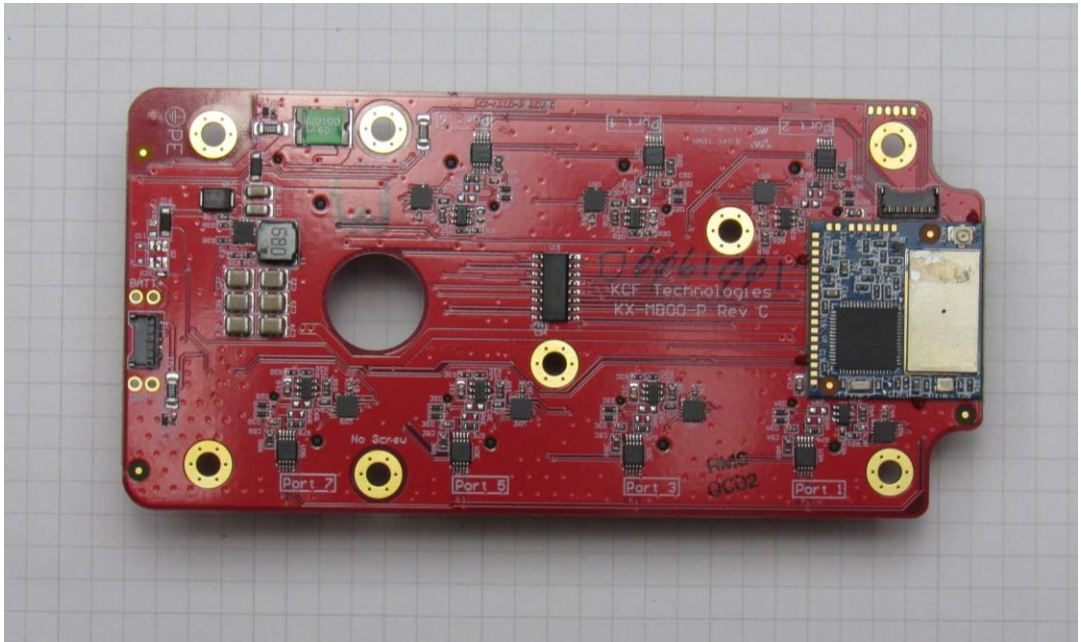


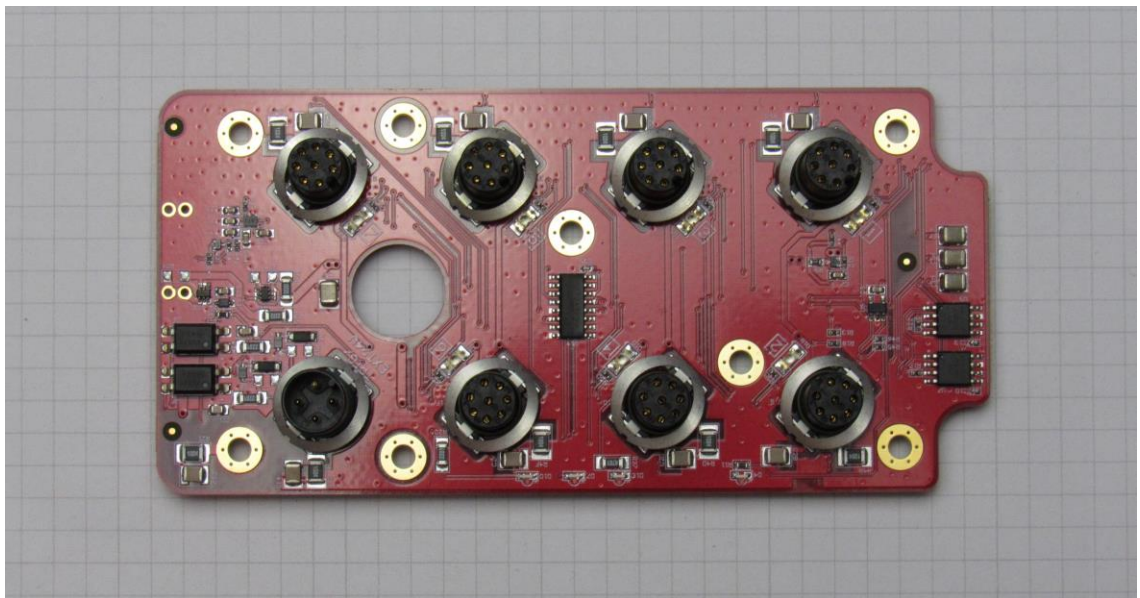
Top view of “Wireless PCB” prior to attaching to “HUB Main PCB”, without RF shield. Grid pattern is 5mm.



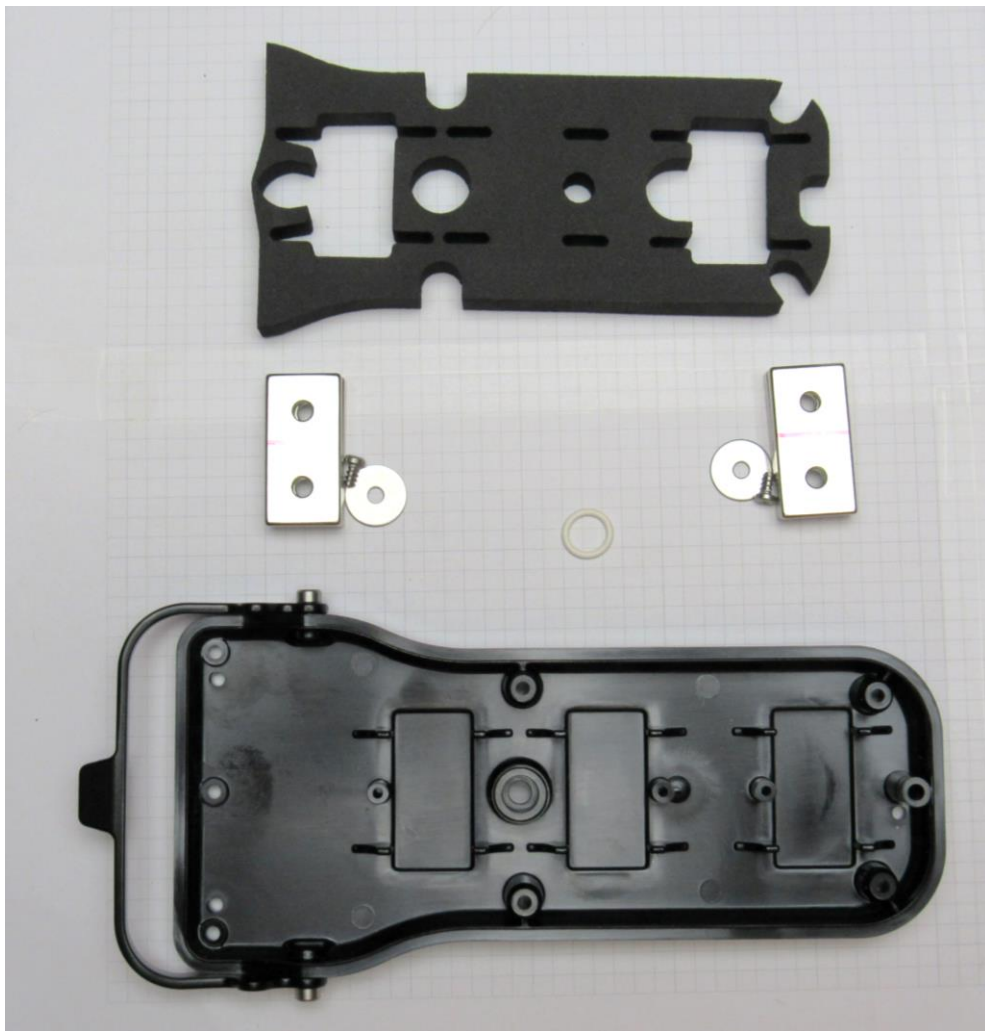
Bottom view of “Wireless PCB.” Grid pattern is 5mm.



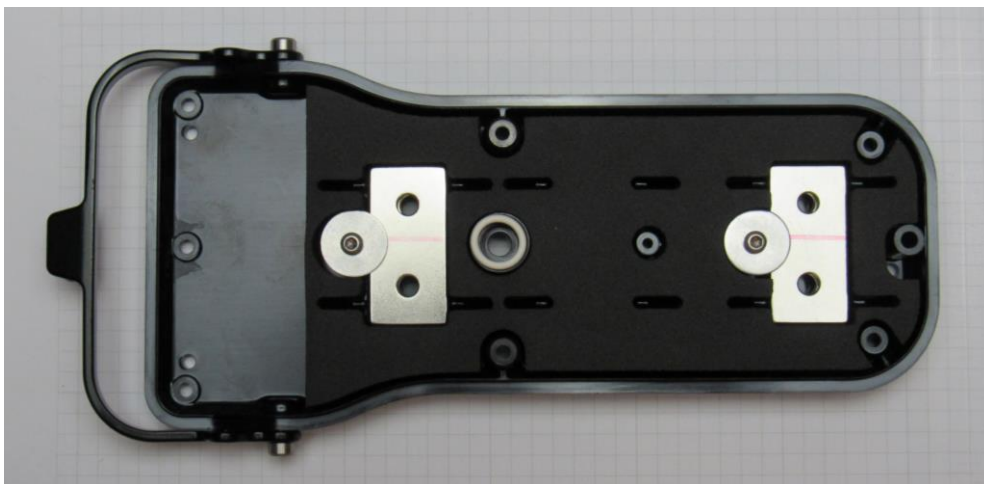
Bottom view of "HUB Main PCB". "Wireless PCB" is LGA'd to "HUB Main PCB" on the right. Power connector is on the left. Grid pattern is 5mm.



Top view of "HUB Main PCB". Grid pattern is 5mm.



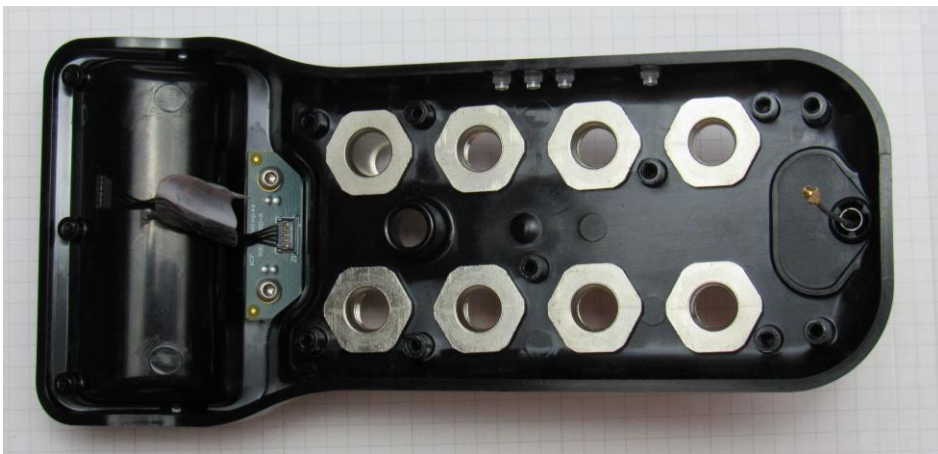
“HUB Base” and parts that are assembled into “HUB Base”.
Grid pattern is 5mm.



Fully assembled “HUB Base”. “Hub Base” is ready to be mated to
fully assembled “HUB Top”. Grid pattern is 5mm.



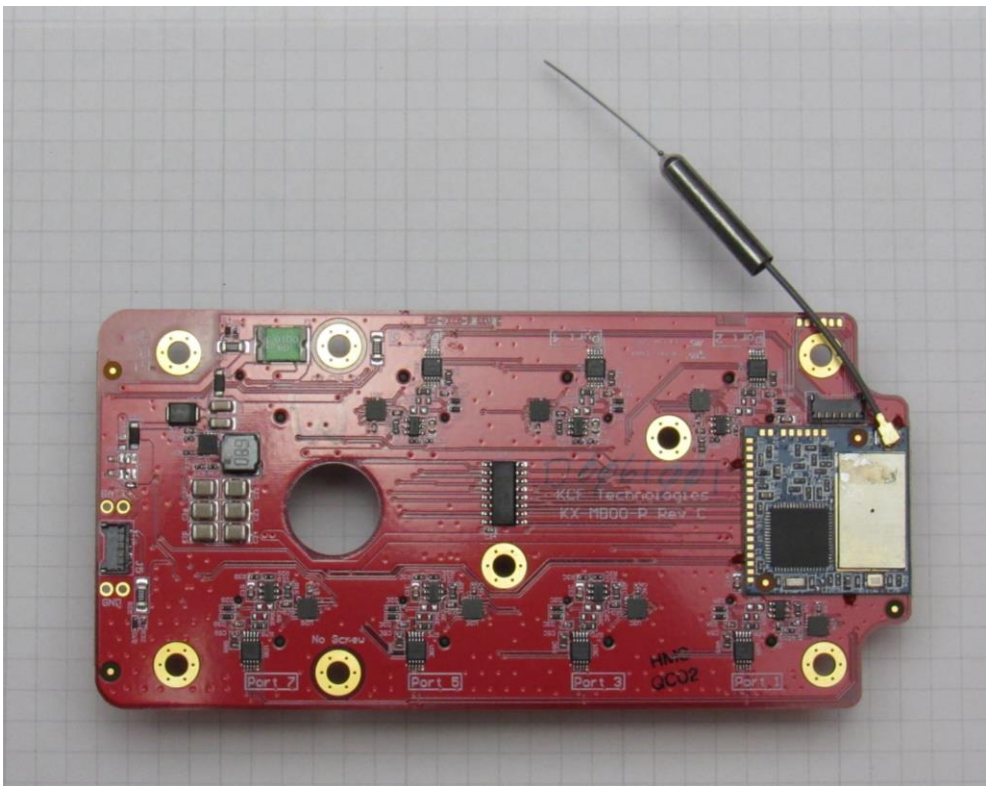
“HUB Top” and parts that are assembled into “HUB Top”. Grid pattern is 5mm.



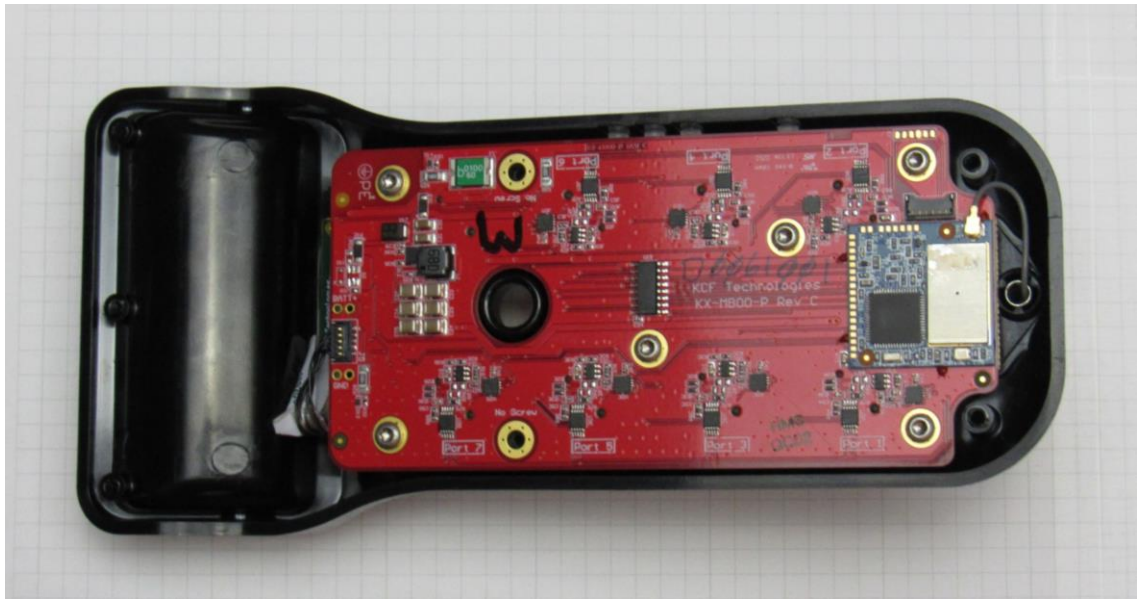
Fully assembled “HUB Top”. Grid pattern is 5mm.



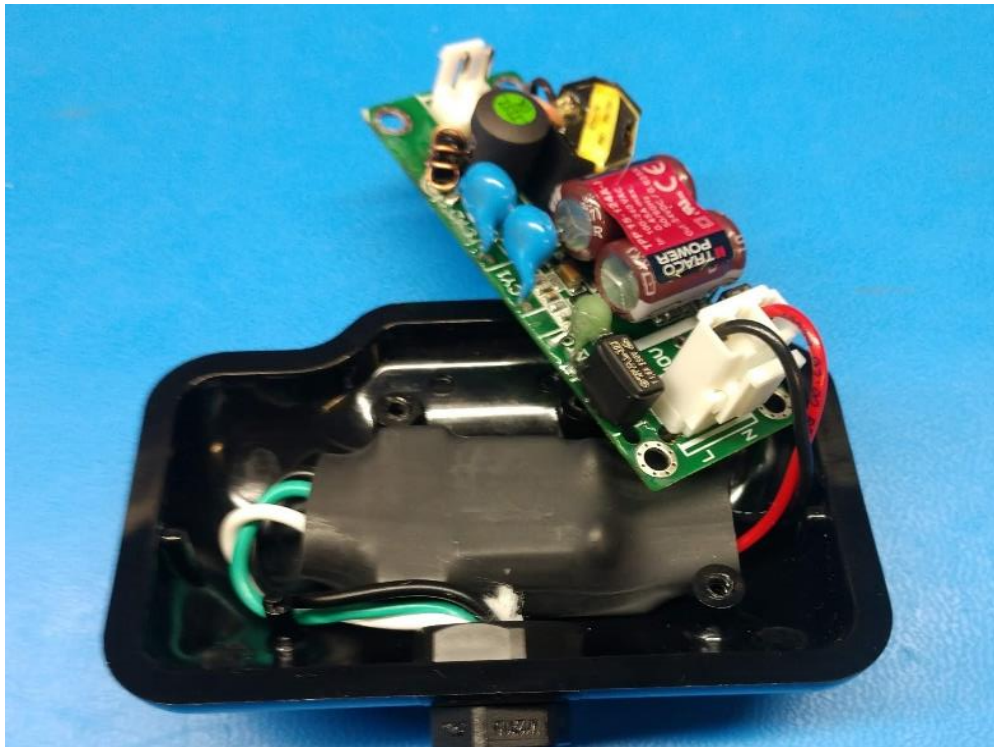
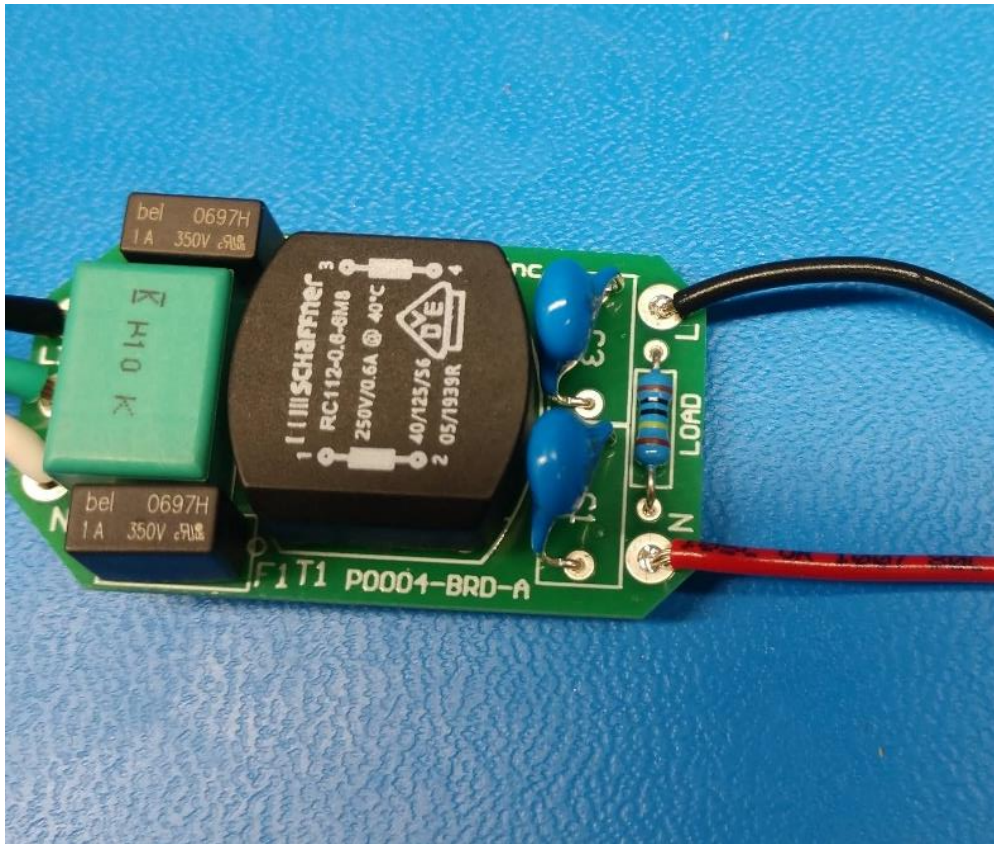
Antenna and “Antenna Holder” that is installed into
“HUB Top”. Antenna slides into “Antenna Holder”.
Grid pattern is 5mm.



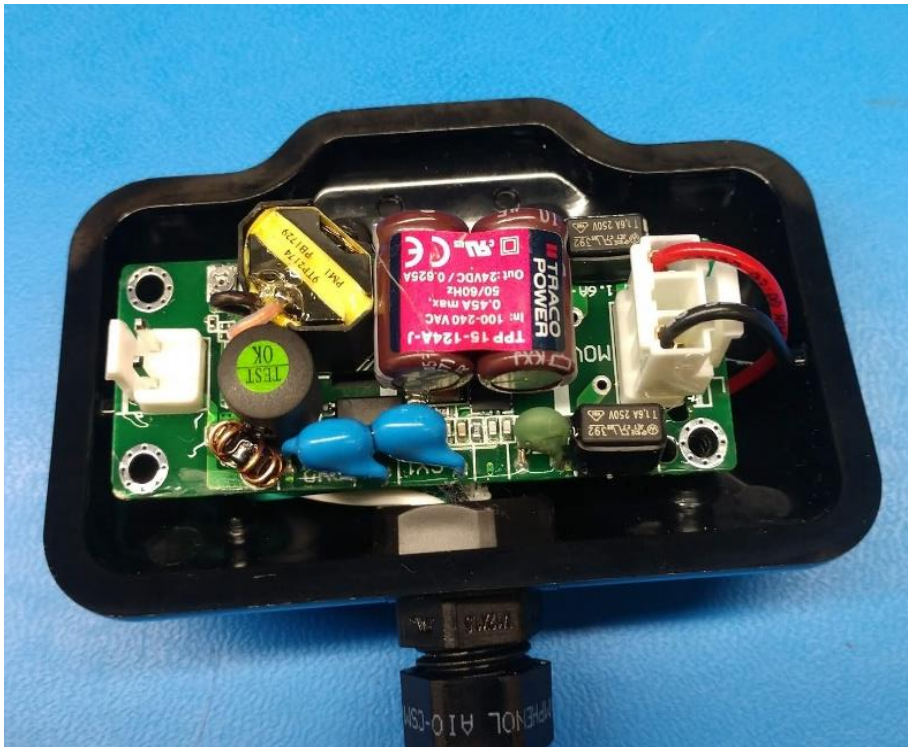
“HUB Main PCB” with antenna attached to “Wireless
PCB”. Grid pattern is 5mm.



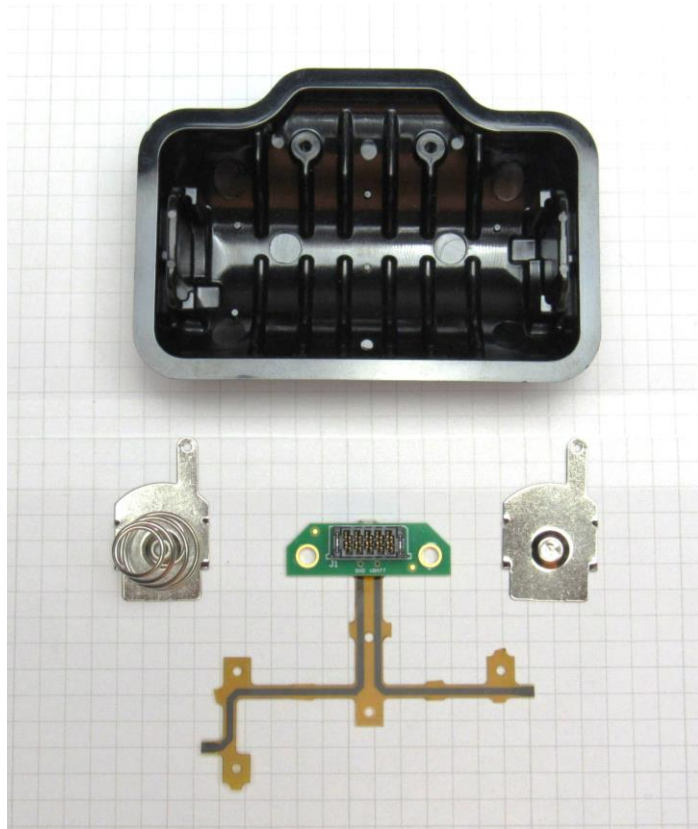
“HUB Main PCB”, “Antenna Holder”, and antenna installed into “HUB Top”. “HUB Top” is ready to be mated to fully assembled “HUB Base”. Grid pattern is 5mm.



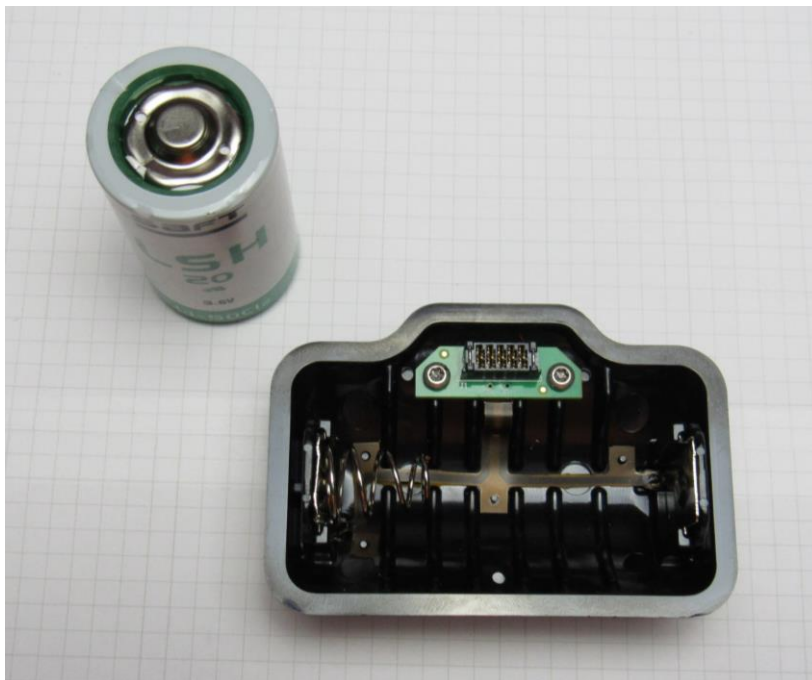
Top: P0004-BRD-A Bottom: P0005-BRD-A sealed and mated to Traco power supply



Fully assembled "AC Power Module".



Enclosure and parts for the “Battery Power Module”.
Grid pattern is 5mm.



Fully assembled “Battery Power Module”. Grid pattern is 5mm.