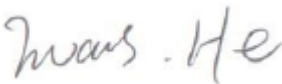
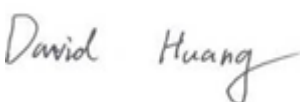



EMC TEST REPORT



Report No.: 17070412-FCC-E

Supersede Report No: N/A

Applicant	PCD, LLC	
Product Name	3G Feature Phone	
Model No.	PH201Q	
Serial No.	N/A	
Test Standard	FCC Part 15 Subpart B Class B:2016, ANSI C63.4: 2014	
Test Date	June 13 to June 29, 2017	
Issue Date	June 30, 2017	
Test Result	<input checked="" type="checkbox"/> Pass <input type="checkbox"/> Fail	
Equipment complied with the specification <input checked="" type="checkbox"/>		
Equipment did not comply with the specification <input type="checkbox"/>		
		
Evans He Test Engineer	David Huang Checked By	
This test report may be reproduced in full only Test result presented in this test report is applicable to the tested sample only		

Issued by:

SIEMIC (SHENZHEN-CHINA) LABORATORIES

Zone A, Floor 1, Building 2 Wan Ye Long Technology Park

South Side of Zhoushi Road, Bao' an District, Shenzhen, Guangdong China 518108

Phone: +86 0755 2601 4629801 Email: China@siemic.com.cn

Laboratories Introduction

SIEMIC, headquartered in the heart of Silicon Valley, with superior facilities in US and Asia, is one of the leading independent testing and certification facilities providing customers with one-stop shop services for Compliance Testing and Global Certifications.



In addition to testing and certification, SIEMIC provides initial design reviews and compliance management throughout a project. Our extensive experience with China, Asia Pacific, North America, European, and International compliance requirements, assures the fastest, most cost effective way to attain regulatory compliance for the global markets.

Accreditations for Conformity Assessment

Country/Region	Scope
USA	EMC, RF/Wireless, SAR, Telecom
Canada	EMC, RF/Wireless, SAR, Telecom
Taiwan	EMC, RF, Telecom, SAR, Safety
Hong Kong	RF/Wireless, SAR, Telecom
Australia	EMC, RF, Telecom, SAR, Safety
Korea	EMI, EMS, RF, SAR, Telecom, Safety
Japan	EMI, RF/Wireless, SAR, Telecom
Singapore	EMC, RF, SAR, Telecom
Europe	EMC, RF, SAR, Telecom, Safety

Test Report	17070412-FCC-E
Page	3 of 37

This page has been left blank intentionally.

CONTENTS

1. REPORT REVISION HISTORY	5
2. CUSTOMER INFORMATION.....	5
3. TEST SITE INFORMATION	5
4. EQUIPMENT UNDER TEST (EUT) INFORMATION	6
5. TEST SUMMARY	8
6. MEASUREMENTS, EXAMINATION AND DERIVED RESULTS.....	10
6.1 AC POWER LINE CONDUCTED EMISSIONS.....	10
6.2 RADIATED EMISSIONS.....	16
ANNEX A. TEST INSTRUMENT.....	21
ANNEX B. EUT AND TEST SETUP PHOTOGRAPHS.....	22
ANNEX C. TEST SETUP AND SUPPORTING EQUIPMENT	33
ANNEX D. USER MANUAL / BLOCK DIAGRAM / SCHEMATICS / PARTLIST	36
ANNEX E. DECLARATION OF SIMILARITY	37

1. Report Revision History

Report No.	Report Version	Description	Issue Date
17070412-FCC-E	NONE	Original	June 30, 2017

2. Customer information

Applicant Name	PCD, LLC
Applicant Add	1500 Tradeport Drive, Suite A, Orlando, Florida, United States, 32824
Manufacturer	Shenzhen Haierhea Telecom Co.,Ltd.
Manufacturer Add	Room 418,Block M-3,Middle of Hi-Tech Park,Nanshan,Shenzhen,China 518057

3. Test site information

Lab performing tests	SIEMIC (Shenzhen-China) LABORATORIES
Lab Address	Zone A, Floor 1, Building 2 Wan Ye Long Technology Park South Side of Zhoushi Road, Bao' an District, Shenzhen, Guangdong China 518108
FCC Test Site No.	718246
IC Test Site No.	4842E-1
Test Software of Radiated Emission	Radiated Emission Program-To Shenzhen v2.0
Test Software of Conducted Emission	EZ-EMC(ver.lcp-03A1)

4. Equipment under Test (EUT) Information

Description of EUT:	3G Feature Phone
Main Model:	PH201Q
Serial Model:	N/A
Antenna Gain:	GSM850: -3dBi PCS1900: -3dBi UMTS-FDD Band V: -3dBi UMTS-FDD Band II: -3dBi Bluetooth: -1dBi
Antenna Type:	BT: Monopole antenna GSM: PIFA antenna
Input Power:	Adapter: Model: PH201Q Input: AC100-240V~50/60Hz,0.2A Output: DC 5.0V, 500mA Battery: Model: PH201Q Spec : 3.7V,600mAh,2.22Wh
Equipment Category :	JBP
Type of Modulation:	GSM / GPRS: GMSK EGPRS: GMSK UMTS-FDD: QPSK Bluetooth: GFSK, π /4DQPSK, 8DPSK
RF Operating Frequency (ies):	GSM850 TX: 824.2 ~ 848.8 MHz; RX: 869.2 ~ 893.8 MHz PCS1900 TX: 1850.2 ~ 1909.8 MHz; RX: 1930.2 ~ 1989.8 MHz UMTS-FDD Band V TX: 826.4 ~ 846.6 MHz; RX: 871.4 ~ 891.6 MHz UMTS-FDD Band II TX: 1852.4 ~ 1907.6 MHz; RX: 1932.4 ~ 1987.6 MHz Bluetooth: 2402-2480 MHz
Number of Channels:	GSM 850: 124CH

PCS1900: 299CH

UMTS-FDD Band V : 102CH

UMTS-FDD Band II : 277CH

Bluetooth: 79CH

Port: USB Port, Earphone Port

Trade Name : N/A

FCC ID: 2ALJJPH201Q

GPRS/EGPRS Multi-slot class 8/10/12

Date EUT received: June 12, 2017

Test Date(s): June 13 to June 29, 2017

5. Test Summary

The product was tested in accordance with the following specifications.

All testing has been performed according to below product classification:

FCC Rules	Description of Test	Result
§15.107; ANSI C63.4: 2014	AC Power Line Conducted Emissions	Compliance
§15.109; ANSI C63.4: 2014	Radiated Emissions	Compliance

Measurement Uncertainty


Parameter	Uncertainty
AC Power Line Conducted Emissions (150kHz~30MHz)	$\pm 3.11\text{dB}$
Radiated Emission(30MHz~1GHz)	$\pm 5.12\text{dB}$
Radiated Emission(1GHz~6GHz)	$\pm 5.34\text{dB}$

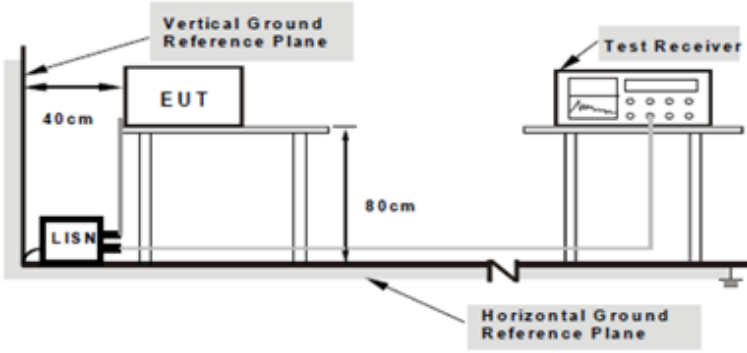
6. Measurements, Examination And Derived Results

6.1 AC Power Line Conducted Emissions

Temperature	22 °C
Relative Humidity	55%
Atmospheric Pressure	1013mbar
Test date :	June 13, 2017
Tested By :	Evans He

Requirement(s):

Spec	Item	Requirement	Applicable														
47CFR§15.107	a)	For Low-power radio-frequency devices that is designed to be connected to the public utility (AC) power line, the radio frequency voltage that is conducted back onto the AC power line on any frequency or frequencies, within the band 150 kHz to 30 MHz, shall not exceed the limits in the following table, as measured using a 50 [mu] H/50 ohms line impedance stabilization network (LISN). The lower limit applies at the boundary between the frequencies ranges.															
		<table><tr><th rowspan="2">Frequency ranges (MHz)</th><th colspan="2">Limit (dBµV)</th></tr><tr><th>QP</th><th>Average</th></tr><tr><td>0.15 ~ 0.5</td><td>66 – 56</td><td>56 – 46</td></tr><tr><td>0.5 ~ 5</td><td>56</td><td>46</td></tr><tr><td>5 ~ 30</td><td>60</td><td>50</td></tr></table>		Frequency ranges (MHz)	Limit (dBµV)		QP	Average	0.15 ~ 0.5	66 – 56	56 – 46	0.5 ~ 5	56	46	5 ~ 30	60	50
		Frequency ranges (MHz)			Limit (dBµV)												
				QP	Average												
		0.15 ~ 0.5		66 – 56	56 – 46												
0.5 ~ 5	56	46															
5 ~ 30	60	50															

Test Setup	 <p>Note: 1.Support units were connected to second LISN. 2.Both of LISNs (AMN) are 80cm from EUT and at least 80cm from other units and other metal planes support units.</p>
------------	---

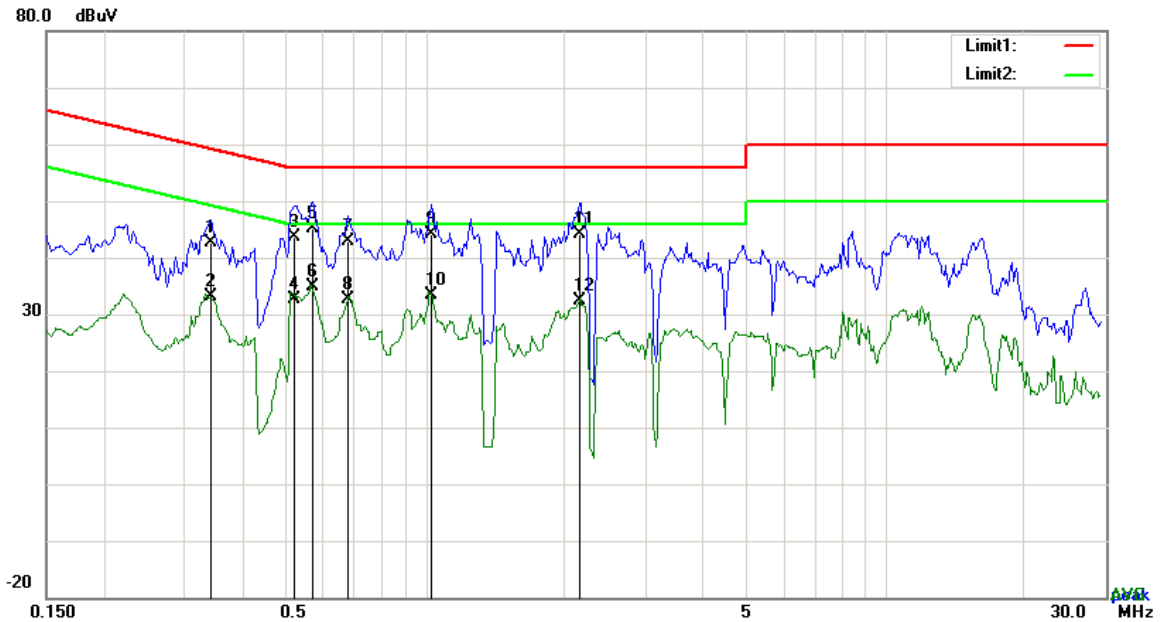
Procedure	<ol style="list-style-type: none"> The EUT and supporting equipment were set up in accordance with the requirements of the standard on top of a 1.5m x 1m x 0.8m high, non-metallic table. The power supply for the EUT was fed through a 50Ω /50mH EUT LISN, connected to filtered mains.
-----------	--

	<p>3. The RF OUT of the EUT LISN was connected to the EMI test receiver via a low-loss coaxial cable.</p> <p>4. All other supporting equipment were powered separately from another main supply.</p> <p>5. The EUT was switched on and allowed to warm up to its normal operating condition.</p> <p>6. A scan was made on the NEUTRAL line (for AC mains) or Earth line (for DC power) over the required frequency range using an EMI test receiver.</p> <p>7. High peaks, relative to the limit line, The EMI test receiver was then tuned to the selected frequencies and the necessary measurements made with a receiver bandwidth setting of 10 kHz.</p> <p>8. Step 7 was then repeated for the LIVE line (for AC mains) or DC line (for DC power).</p>
Remark	
Result	<input checked="" type="checkbox"/> Pass <input type="checkbox"/> Fail

Test Data ☒ Yes ☐ N/A

Test Plot ☒ Yes (See below) ☐ N/A

Test Mode : USB Mode

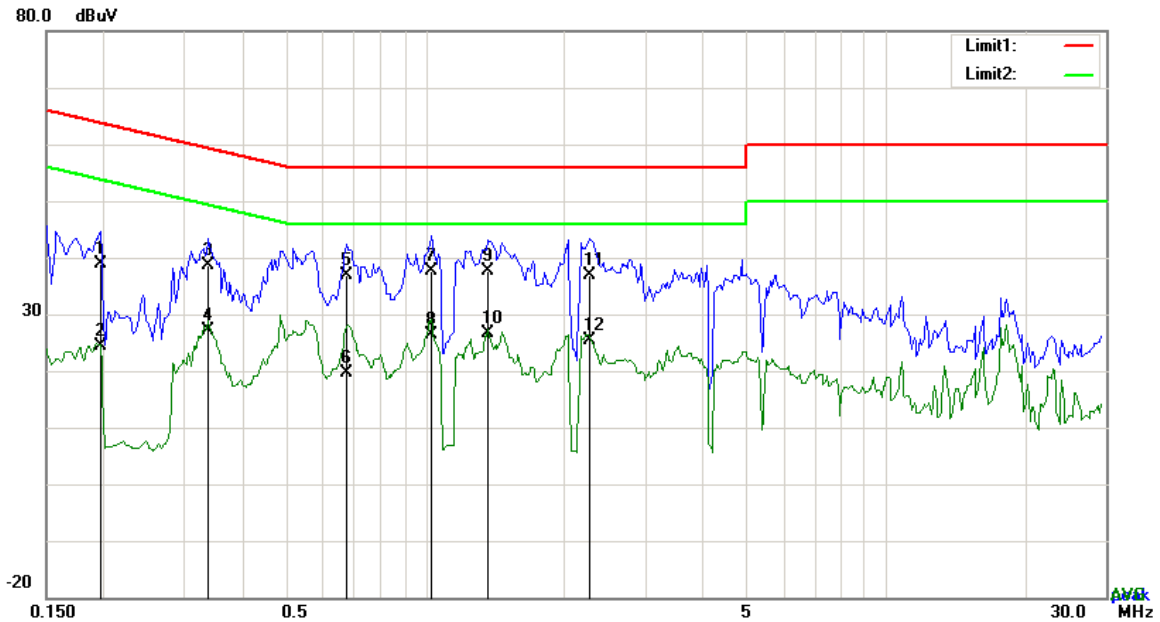


Test Data

Phase Line Plot at 120Vac, 60Hz

No.	P/L	Frequency	Reading	Detector	Corrected	Result	Limit	Margin
		(MHz)	(dBuV)		(dB)	(dBuV)	(dBuV)	(dB)
1	L1	0.3411	32.51	QP	10.03	42.54	59.18	-16.64
2	L1	0.3411	23.05	AVG	10.03	33.08	49.18	-16.10
3	L1	0.5205	33.65	QP	10.03	43.68	56.00	-12.32
4	L1	0.5205	22.49	AVG	10.03	32.52	46.00	-13.48
5	L1	0.5673	35.14	QP	10.03	45.17	56.00	-10.83
6	L1	0.5673	24.88	AVG	10.03	34.91	46.00	-11.09
7	L1	0.6804	32.80	QP	10.03	42.83	56.00	-13.17
8	L1	0.6804	22.70	AVG	10.03	32.73	46.00	-13.27
9	L1	1.0275	34.13	QP	10.03	44.16	56.00	-11.84
10	L1	1.0275	23.33	AVG	10.03	33.36	46.00	-12.64
11	L1	2.1663	34.18	QP	10.04	44.22	56.00	-11.78
12	L1	2.1663	22.29	AVG	10.04	32.33	46.00	-13.67

Test Mode : USB Mode

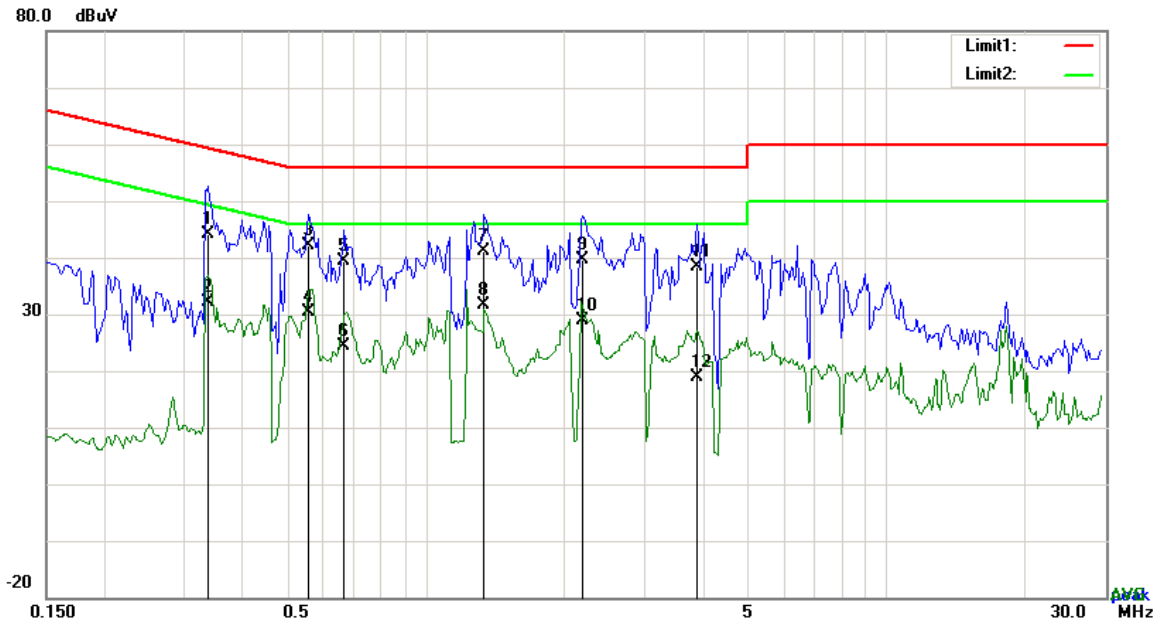


Test Data

Phase Neutral Plot at 120Vac, 60Hz

No.	P/L	Frequency	Reading	Detector	Corrected	Result	Limit	Margin
		(MHz)	(dBuV)		(dB}	(dBuV)	(dBuV)	(dB)
1	N	0.1968	28.96	QP	10.02	38.98	63.74	-24.76
2	N	0.1968	14.24	AVG	10.02	24.26	53.74	-29.48
3	N	0.3372	28.59	QP	10.02	38.61	59.27	-20.66
4	N	0.3372	17.17	AVG	10.02	27.19	49.27	-22.08
5	N	0.6726	26.91	QP	10.02	36.93	56.00	-19.07
6	N	0.6726	9.58	AVG	10.02	19.60	46.00	-26.40
7	N	1.0275	27.61	QP	10.03	37.64	56.00	-18.36
8	N	1.0275	16.28	AVG	10.03	26.31	46.00	-19.69
9	N	1.3629	27.55	QP	10.03	37.58	56.00	-18.42
10	N	1.3629	16.50	AVG	10.03	26.53	46.00	-19.47
11	N	2.2677	26.87	QP	10.04	36.91	56.00	-19.09
12	N	2.2677	15.39	AVG	10.04	25.43	46.00	-20.57

Test Mode : USB Mode

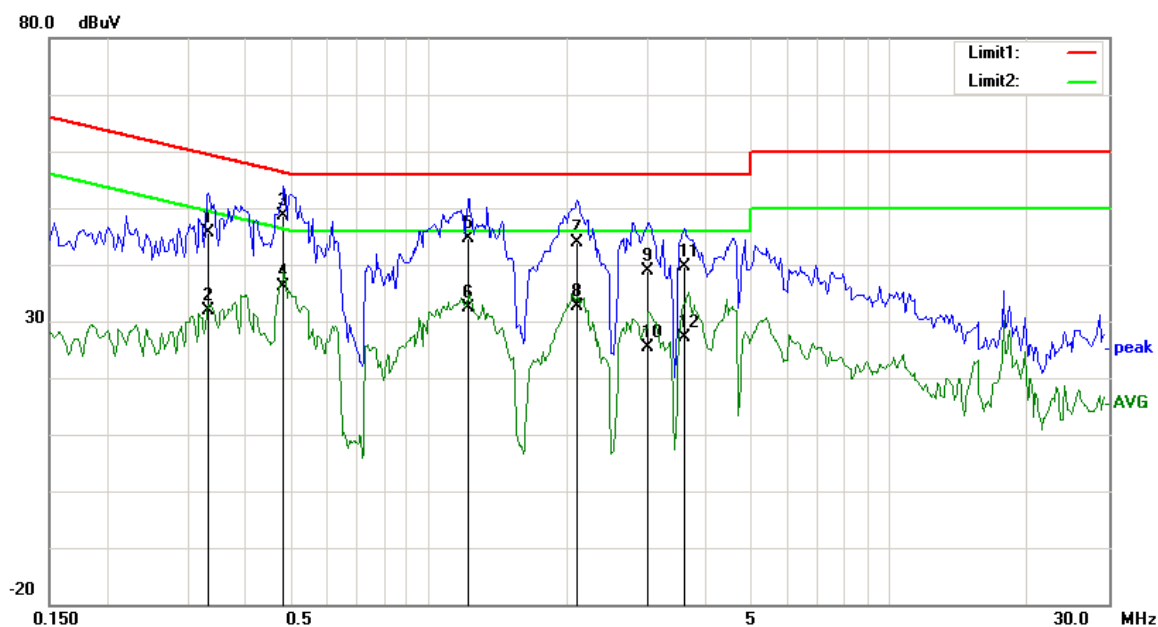


Test Data

Phase Line Plot at 240Vac, 60Hz

No.	P/L	Frequency	Reading	Detector	Corrected	Result	Limit	Margin
		(MHz)	(dBuV)		(dB}	(dBuV)	(dBuV)	(dB)
1	L1	0.3372	34.09	QP	10.03	44.12	59.27	-15.15
2	L1	0.3372	22.12	AVG	10.03	32.15	49.27	-17.12
3	L1	0.5556	32.13	QP	10.03	42.16	56.00	-13.84
4	L1	0.5556	20.23	AVG	10.03	30.26	46.00	-15.74
5	L1	0.6648	29.44	QP	10.03	39.47	56.00	-16.53
6	L1	0.6648	14.28	AVG	10.03	24.31	46.00	-21.69
7	L1	1.3395	31.20	QP	10.03	41.23	56.00	-14.77
8	L1	1.3395	21.62	AVG	10.03	31.65	46.00	-14.35
9	L1	2.1975	29.50	QP	10.04	39.54	56.00	-16.46
10	L1	2.1975	18.72	AVG	10.04	28.76	46.00	-17.24
11	L1	3.8892	28.39	QP	10.07	38.46	56.00	-17.54
12	L1	3.8892	8.88	AVG	10.07	18.95	46.00	-27.05

Test Mode : USB Mode



Test Data


Phase Neutral Plot at 240Vac, 60Hz

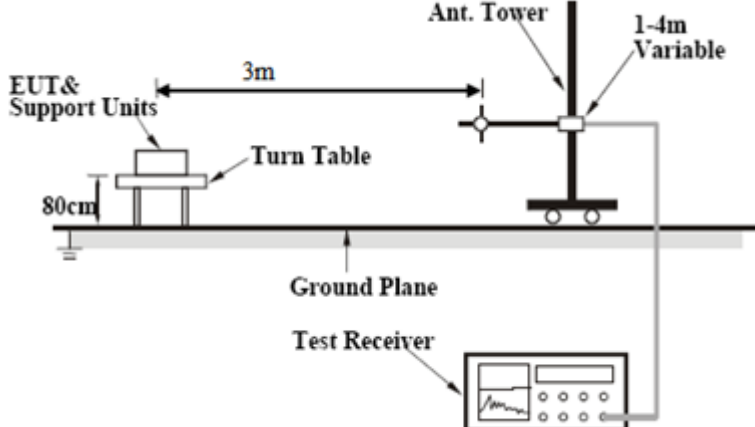
No.	P/L	Frequency	Reading	Detector	Corrected	Result	Limit	Margin
		(MHz)	(dBuV)		(dB)	(dBuV)	(dBuV)	(dB)
1	N	0.3333	35.56	QP	10.02	45.58	59.37	-13.79
2	N	0.3333	21.79	AVG	10.02	31.81	49.37	-17.56
3	N	0.4854	38.57	QP	10.02	48.59	56.25	-7.66
4	N	0.4854	26.23	AVG	10.02	36.25	46.25	-10.00
5	N	1.2225	34.54	QP	10.03	44.57	56.00	-11.43
6	N	1.2225	22.34	AVG	10.03	32.37	46.00	-13.63
7	N	2.1078	33.96	QP	10.04	44.00	56.00	-12.00
8	N	2.1078	22.61	AVG	10.04	32.65	46.00	-13.35
9	N	3.0078	28.80	QP	10.05	38.85	56.00	-17.15
10	N	3.0078	15.39	AVG	10.05	25.44	46.00	-20.56
11	N	3.5928	29.56	QP	10.06	39.62	56.00	-16.38
12	N	3.5928	17.15	AVG	10.06	27.21	46.00	-18.79

6.2 Radiated Emissions

Temperature	24 °C
Relative Humidity	52%
Atmospheric Pressure	1019mbar
Test date :	June 19, 2017
Tested By :	Evans He

Requirement(s):

Spec	Item	Requirement	Applicable	
47CFR§15.109(d)	a)	Except higher limit as specified elsewhere in other section, the emissions from the low-power radio-frequency devices shall not exceed the field strength levels specified in the following table and the level of any unwanted emissions shall not exceed the level of the fundamental emission. The tighter limit applies at the band edges		
		Frequency range (MHz)		Field Strength (µV/m)
		30 – 88		100
		88 – 216		150
		216 960		200
		Above 960		500

Test Setup	
------------	--

Procedure	<ol style="list-style-type: none"> The EUT was switched on and allowed to warm up to its normal operating condition. The test was carried out at the selected frequency points obtained from the EUT characterization. Maximization of the emissions, was carried out by rotating the EUT, changing the antenna polarization, and adjusting the antenna height in the following manner: <ol style="list-style-type: none"> Vertical or horizontal polarization (whichever gave the higher emission level
-----------	--

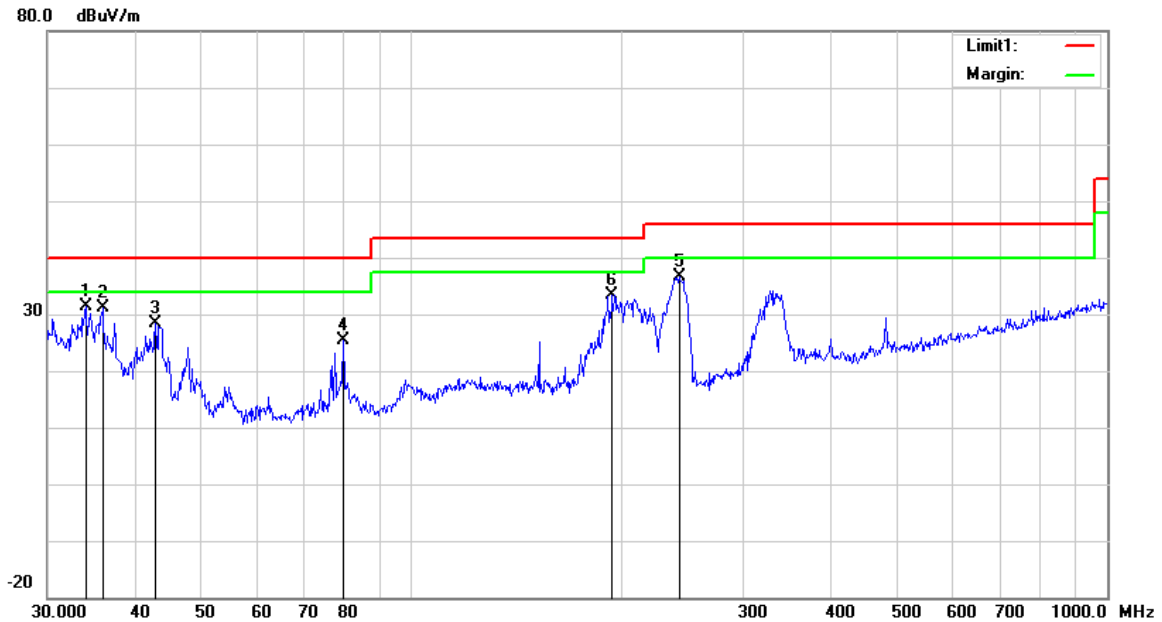
	<p>over a full rotation of the EUT) was chosen.</p> <p>b. The EUT was then rotated to the direction that gave the maximum emission.</p> <p>c. Finally, the antenna height was adjusted to the height that gave the maximum emission.</p> <p>3. The resolution bandwidth and video bandwidth of test receiver/spectrum analyzer is 120 kHz for Quasi Peak detection at frequency below 1GHz.</p> <p>4. The resolution bandwidth of test receiver/spectrum analyzer is 1MHz and video bandwidth is 3MHz with Peak detection for Peak measurement at frequency above 1GHz.</p> <p>The resolution bandwidth of test receiver/spectrum analyzer is 1MHz and the video bandwidth with Peak detection for Average Measurement as below at frequency above 1GHz.</p> <p>■ 1 kHz (Duty cycle < 98%) □ 10 Hz (Duty cycle > 98%)</p> <p>5. Steps 2 and 3 were repeated for the next frequency point, until all selected frequency points were measured.</p>
Remark	
Result	<input checked="" type="checkbox"/> Pass <input type="checkbox"/> Fail

Test Data ☒ Yes ☐ N/A

Test Plot ☒ Yes (See below) ☐ N/A

Test Mode : USB Mode

Below 1GHz

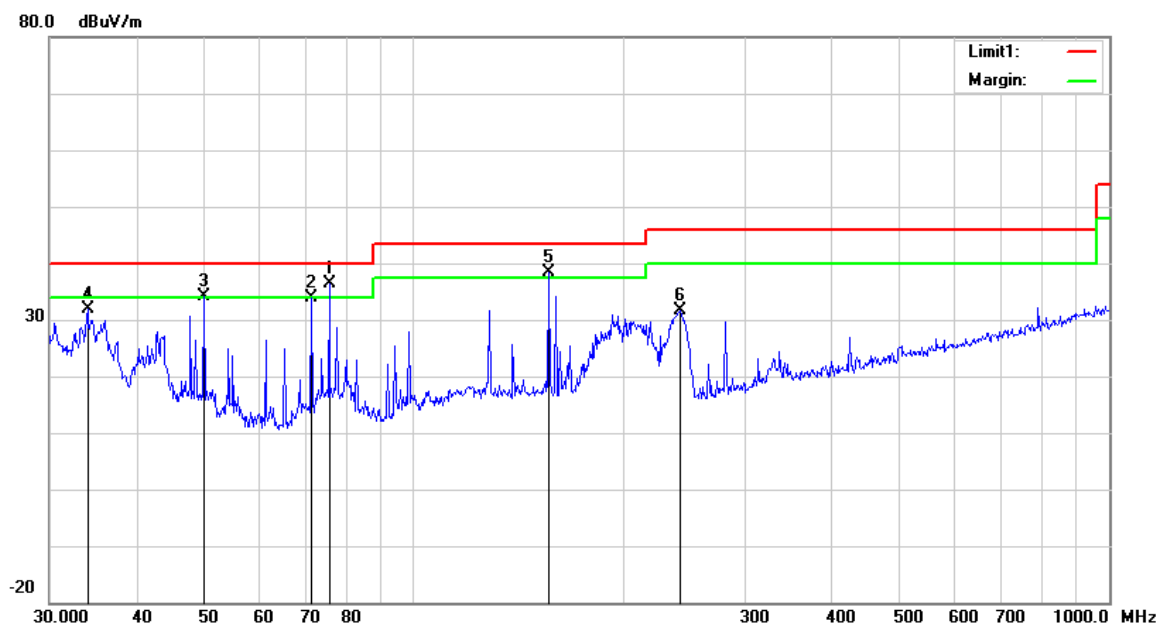


Test Data

Horizontal Polarity Plot @3m

No.	P/L	Frequency	Reading	Detector	Ant_F	PA_G	Cab_L	Result	Limit	Margin	Height	Degree
		(MHz)	(dBuV/m)		(dB/m)	(dB)	(dB)	(dBuV/m)	(dBuV/m)	(dB)	(cm)	(°)
1	H	34.0365	34.50	peak	18.29	22.26	0.73	31.26	40.00	-8.74	100	257
2	H	36.0007	35.75	peak	16.82	22.26	0.77	31.08	40.00	-8.92	100	319
3	H	42.8998	37.92	peak	11.99	22.29	0.77	28.39	40.00	-11.61	100	354
4	H	79.8003	39.09	peak	7.60	22.42	1.05	25.32	40.00	-14.68	100	36
5	H	242.5253	45.75	peak	11.50	22.30	1.68	36.63	46.00	-9.37	100	265
6	H	194.4534	42.49	peak	11.79	22.34	1.54	33.48	43.50	-10.02	100	142

Below 1GHz



Test Data

Vertical Polarity Plot @3m

No.	P/L	Frequency	Reading	Detector	Ant_F	PA_G	Cab_L	Result	Limit	Margin	Height	Degree
		(MHz)	(dBuV/m)		(dB/m)	(dB)	(dB)	(dBuV/m)	(dBuV/m)	(dB)	(cm)	(°)
1	V	75.7114	50.17	QP	7.69	22.40	0.97	36.43	40.00	-3.57	100	163
2	V	71.3300	47.63	peak	7.77	22.39	0.97	33.98	40.00	-6.02	100	25
3	V	50.0566	47.39	QP	8.39	22.38	0.80	34.20	40.00	-5.80	100	83
4	V	34.0365	35.03	peak	18.29	22.26	0.73	31.79	40.00	-8.21	100	106
5	V	156.4578	46.73	QP	12.60	22.29	1.37	38.41	43.50	-5.09	100	209
6	V	241.6763	40.65	peak	11.52	22.30	1.67	31.54	46.00	-14.46	200	132

Above 1GHz

Frequency (MHz)	Read_level (dBμV/m)	Azimuth	Height (cm)	Polarity (H/V)	Factors (dB)	Level (dBμV/m)	Limit (dBμV/m)	Margin (dB)	Detector (PK/AV)
1242.099	68.58	142	100	V	-17.79	50.79	74	-23.21	PK
2022.15	66.02	56	200	V	-14.38	51.64	74	-22.36	PK
2919.675	65.64	307	100	V	-12.67	52.97	74	-21.03	PK
1310.693	68.75	118	100	H	-17.62	51.13	74	-22.87	PK
2393.093	65.25	249	100	H	-13.83	51.42	74	-22.58	PK
2977.791	60.04	153	100	H	-12.52	47.52	74	-26.48	PK

Note1: The highest frequency of the EUT is 2480 MHz, so the testing has been conformed to $5 \times 2480 \text{ MHz} = 12,400 \text{ MHz}$.

Note2: The frequency that above 3GHz is mainly from the environment noise.

Note3: The AV measurement performed, more than 20dB below limit so AV test data was not presented.

Annex A. TEST INSTRUMENT

Instrument	Model	Serial #	Cal Date	Cal Due	In use
AC Line Conducted Emissions					
EMI test receiver	ESCS30	8471241027	09/16/2016	09/15/2017	<input checked="" type="checkbox"/>
Line Impedance Stabilization Network	LI-125A	191106	09/24/2016	09/23/2017	<input checked="" type="checkbox"/>
Line Impedance Stabilization Network	LI-125A	191107	09/24/2016	09/23/2017	<input checked="" type="checkbox"/>
ISN	ISN T800	34373	09/24/2016	09/23/2017	<input type="checkbox"/>
Transient Limiter	LIT-153	531118	08/31/2016	08/30/2017	<input checked="" type="checkbox"/>
Radiated Emissions					
EMI test receiver	ESL6	100262	09/16/2016	09/15/2017	<input checked="" type="checkbox"/>
OPT 010 AMPLIFIER (0.1-1300MHz)	8447E	2727A02430	08/31/2016	08/30/2017	<input checked="" type="checkbox"/>
Microwave Preamplifier (1 ~ 26.5GHz)	8449B	3008A02402	03/23/2017	03/22/2018	<input checked="" type="checkbox"/>
Bilog Antenna (30MHz~6GHz)	JB6	A110712	09/20/2016	09/19/2017	<input checked="" type="checkbox"/>
Double Ridge Horn Antenna	AH-118	71259	09/23/2016	09/22/2017	<input checked="" type="checkbox"/>

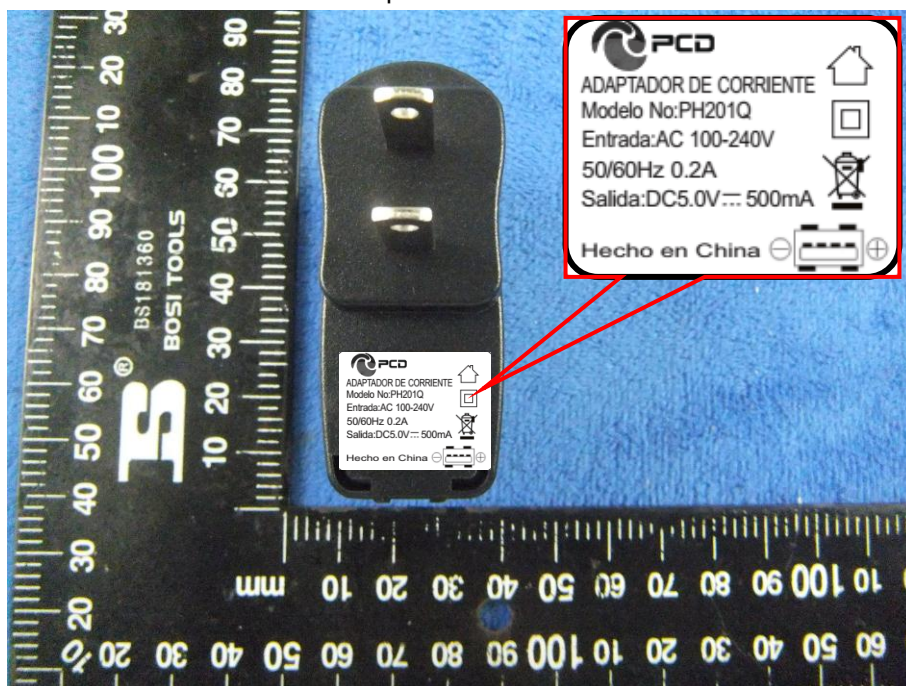
Annex B. EUT And Test Setup Photographs

Annex B.i. Photograph: EUT External Photo

Whole Package View



Adapter - Front View



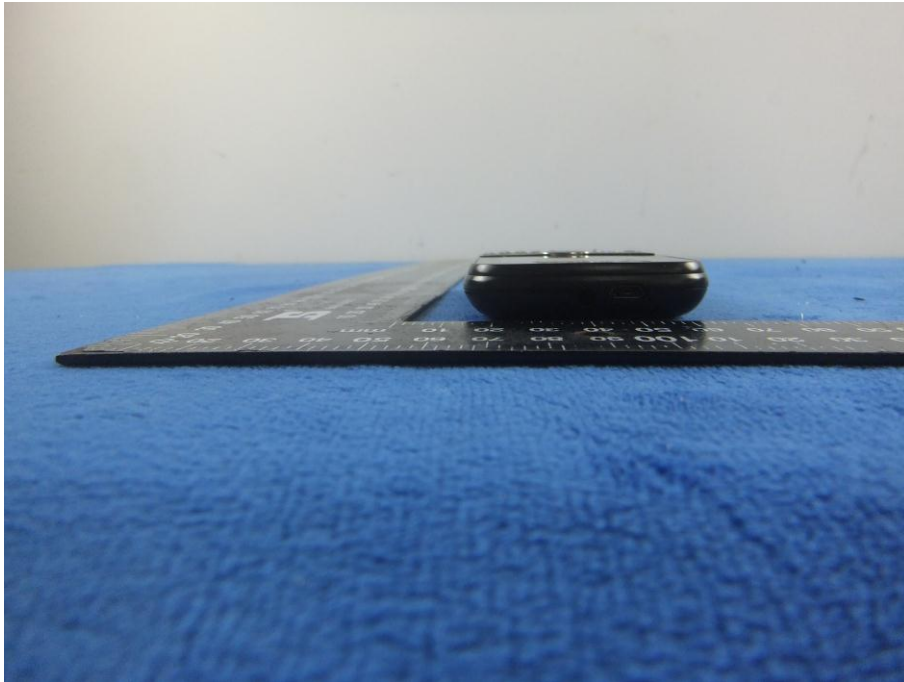
EUT - Front View



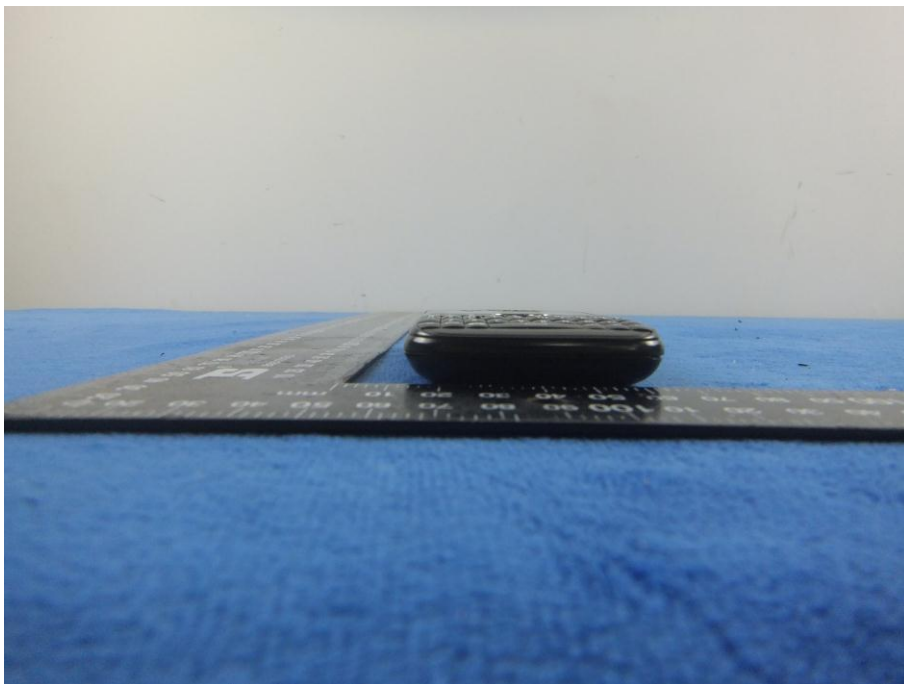
EUT - Rear View



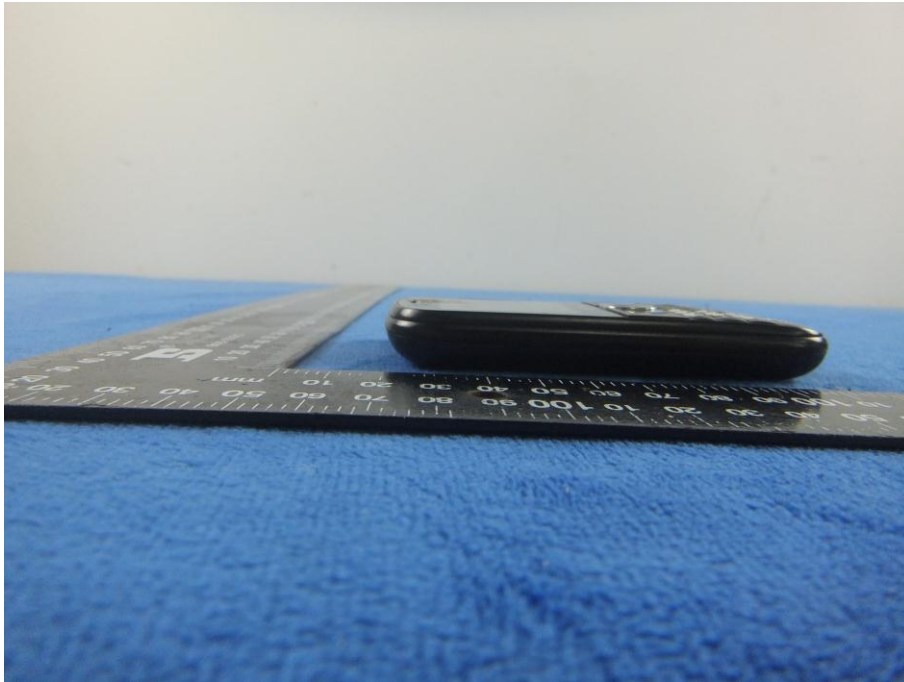
EUT - Top View



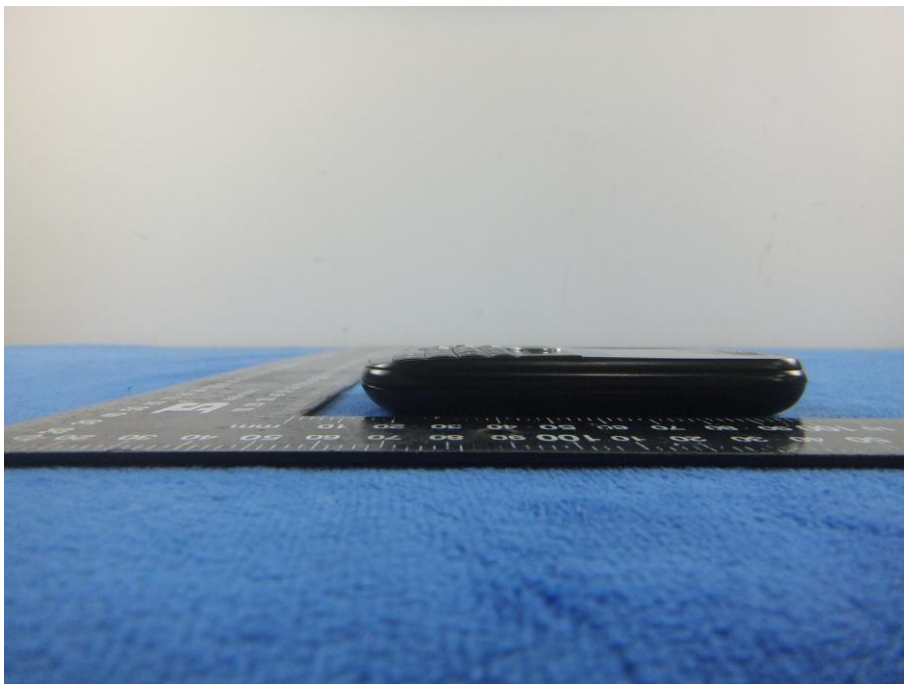
EUT - Bottom View



EUT - Left View



EUT - Right View



Annex B.ii. Photograph: EUT Internal Photo

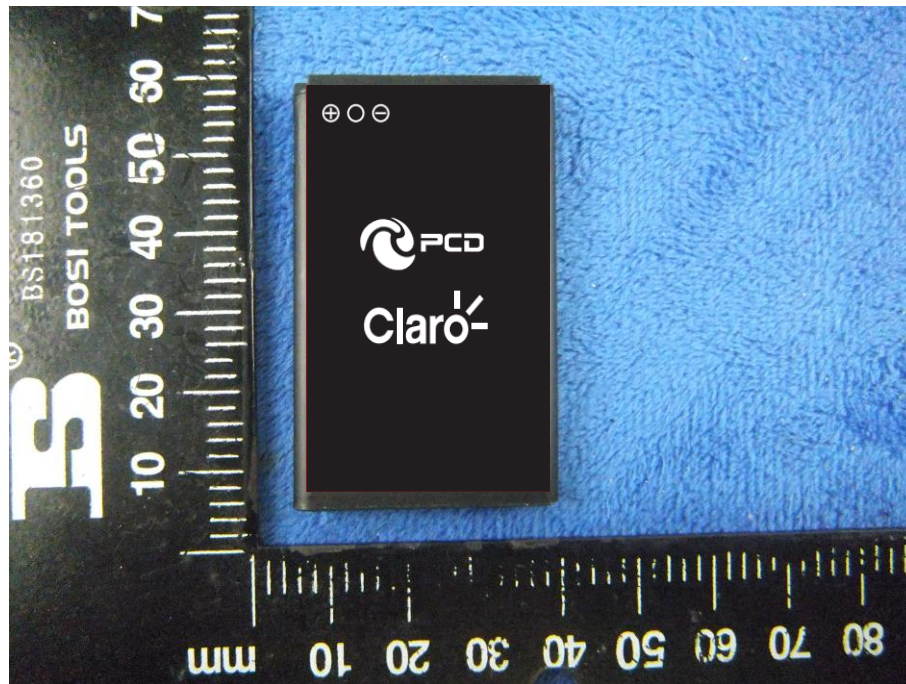
Cover Off - Top View 1



Cover Off - Top View 2



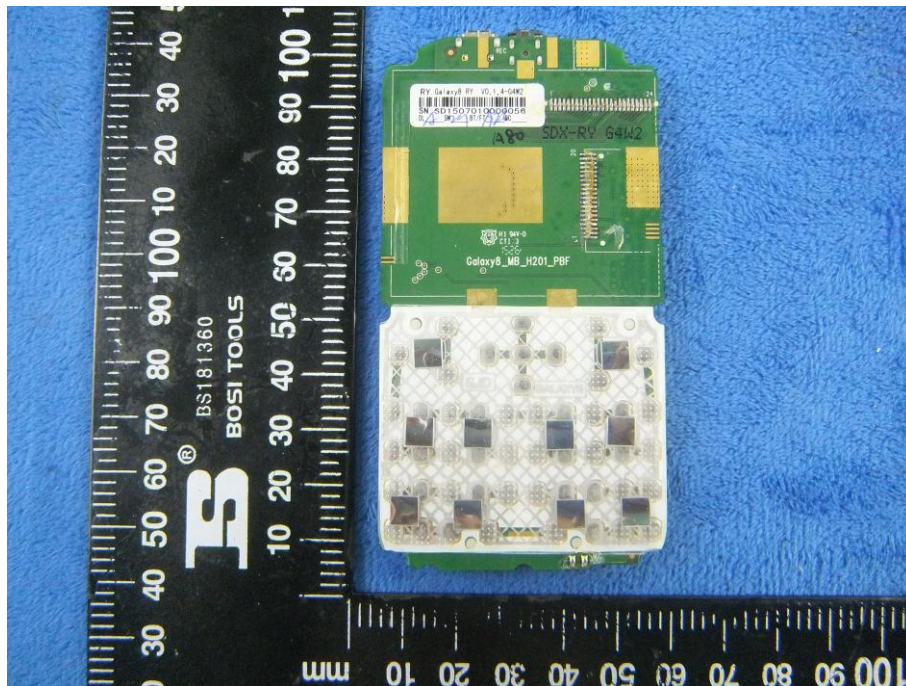
Battery - Front View



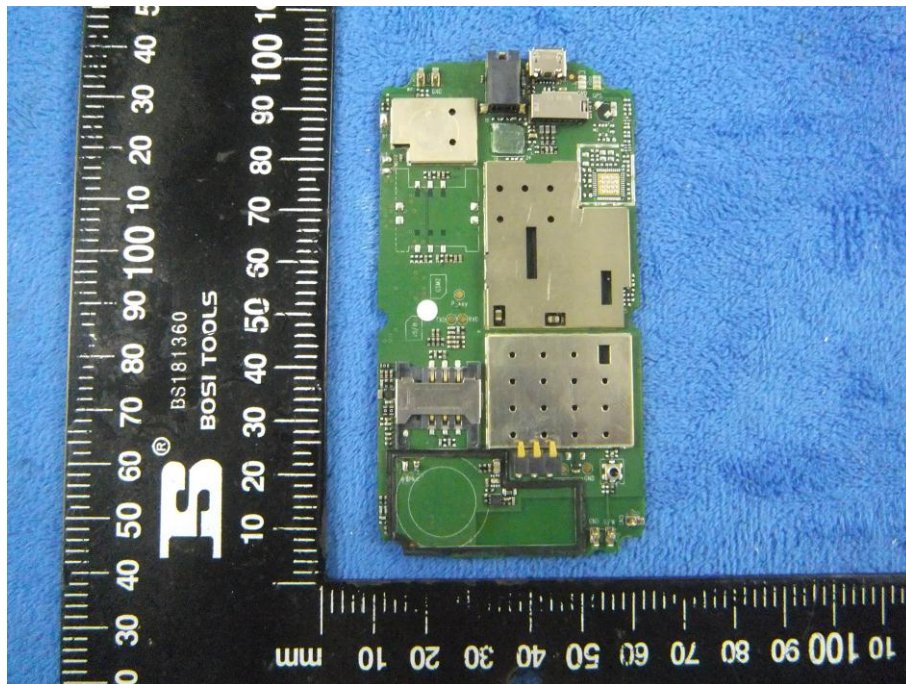
Battery - Rear View



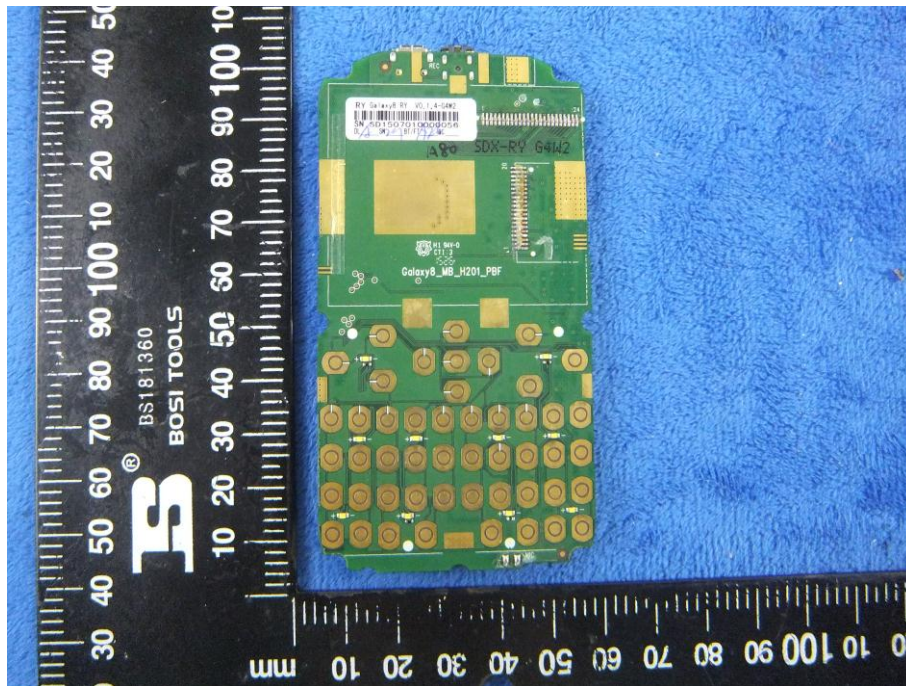
Mainboard with button - Front View



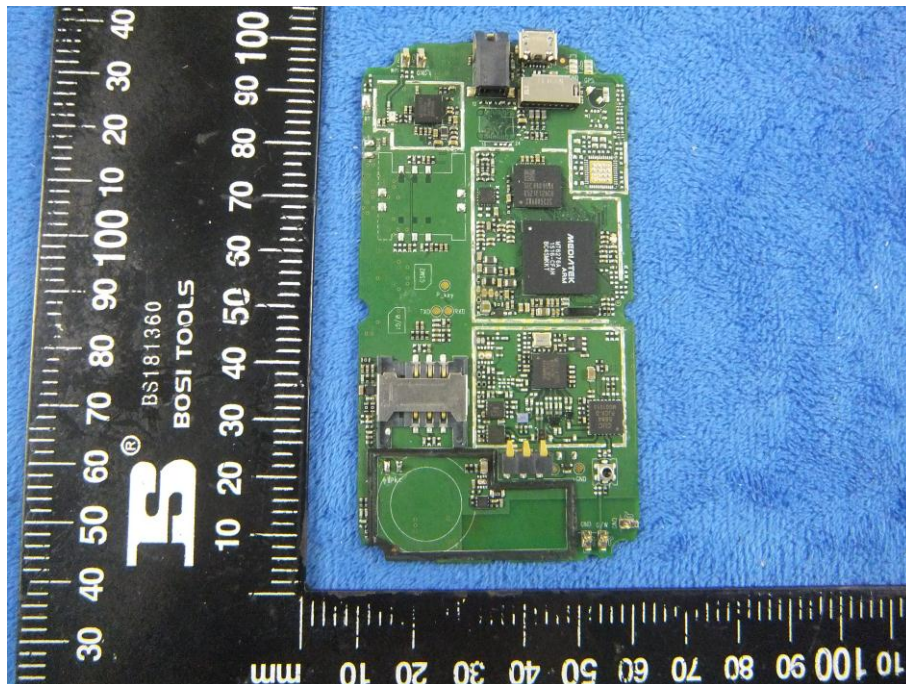
Mainboard with Shielding - Rear View



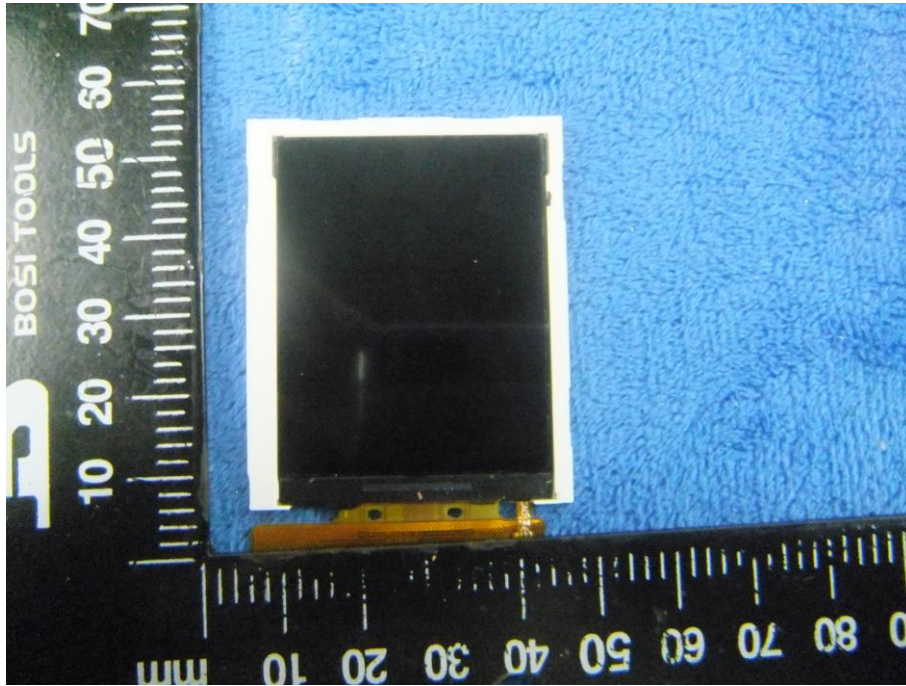
Mainboard without button - Front View



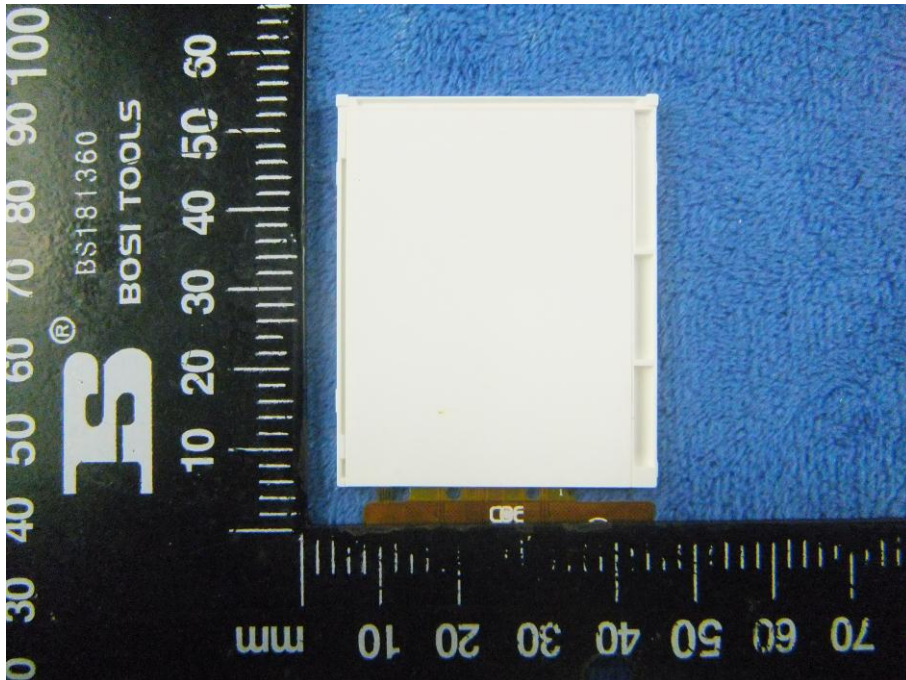
Mainboard without Shielding - Rear View



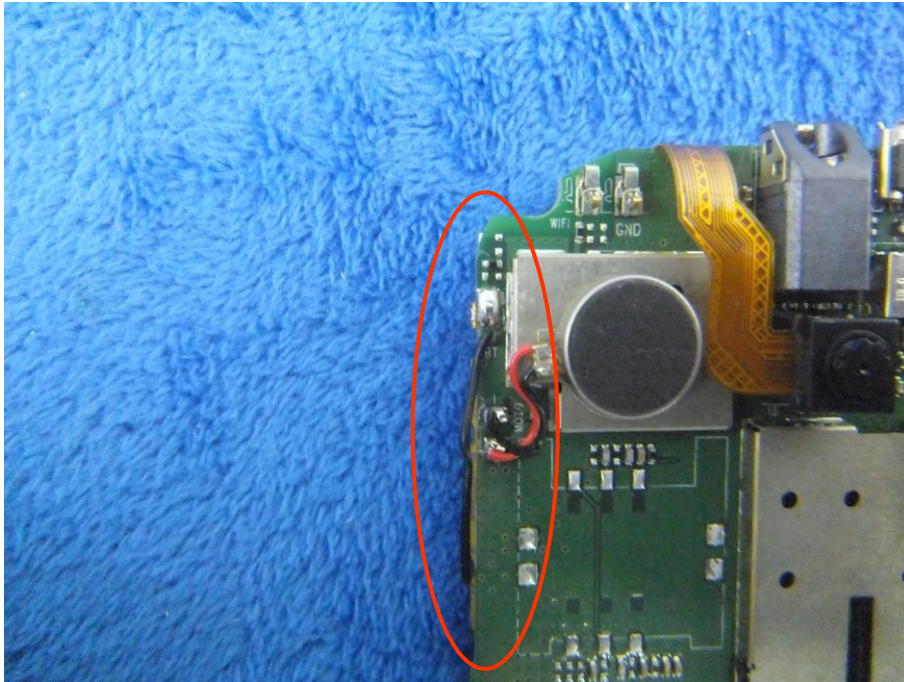
LCD – Front View



LCD – Rear View



BT - Antenna View



GSM/WCDMA - Antenna View



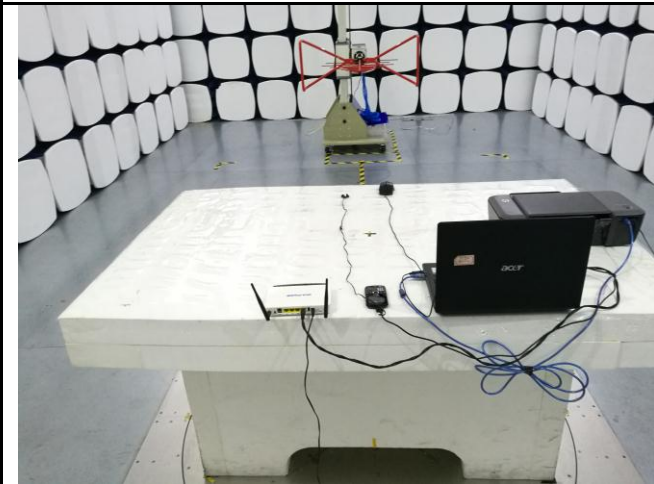
Annex B.iii. Photograph: Test Setup Photo



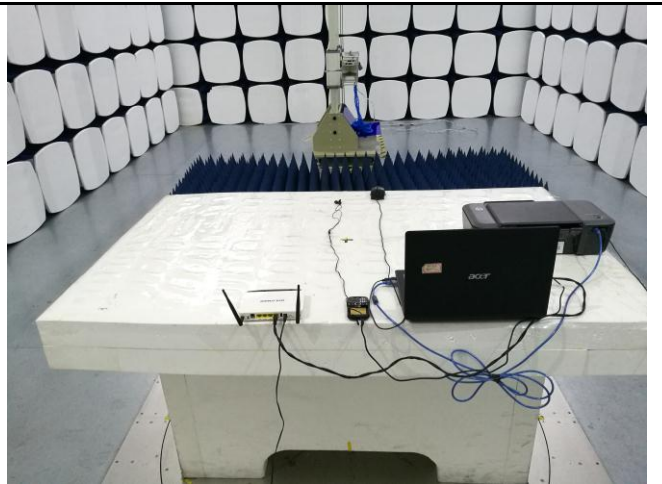
Conducted Emissions Test Setup – Front View



Conducted Emissions Test Setup – Side View



Radiated Emissions Test Setup Below 1GHz

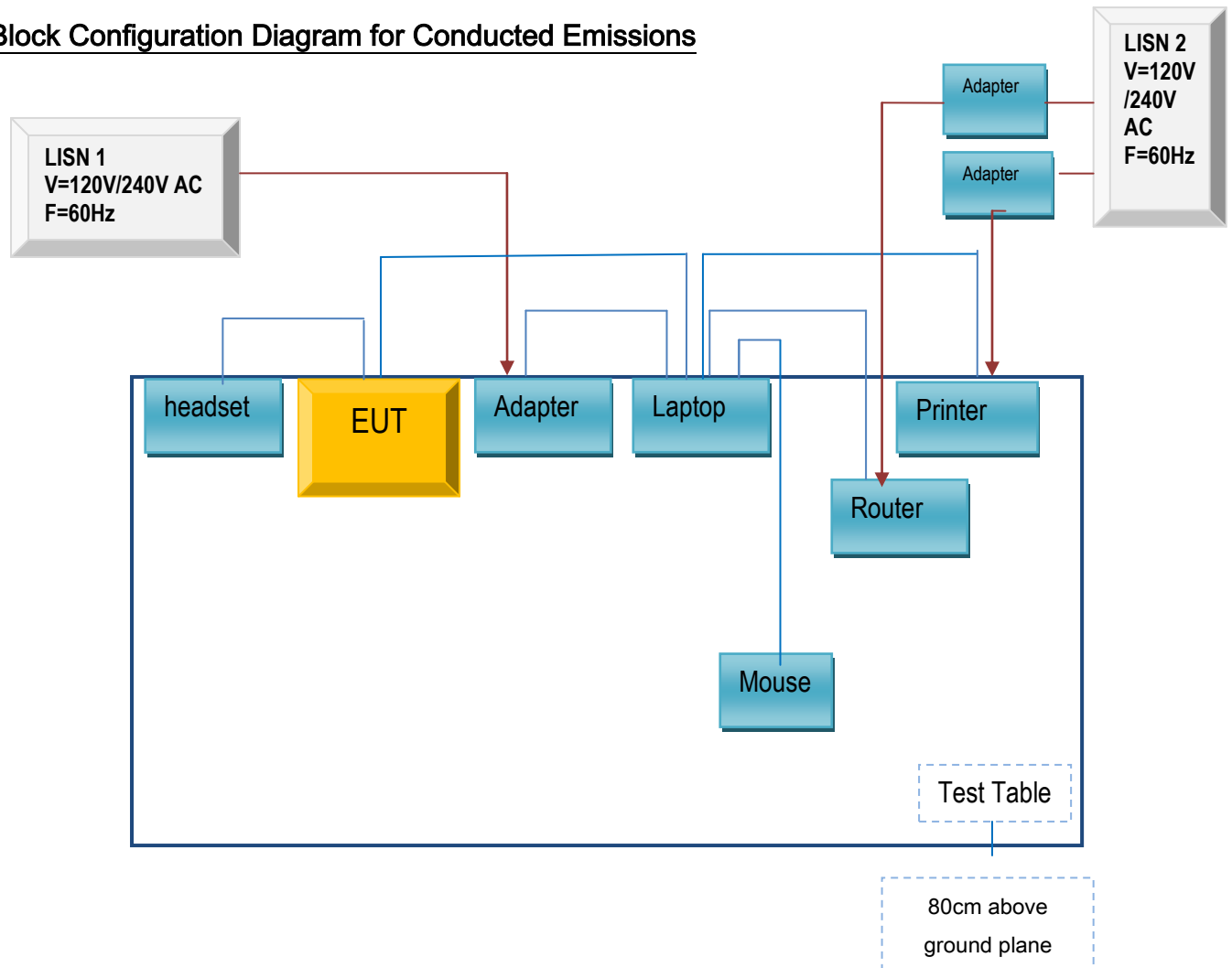


Radiated Emissions Test Setup Above 1GHz

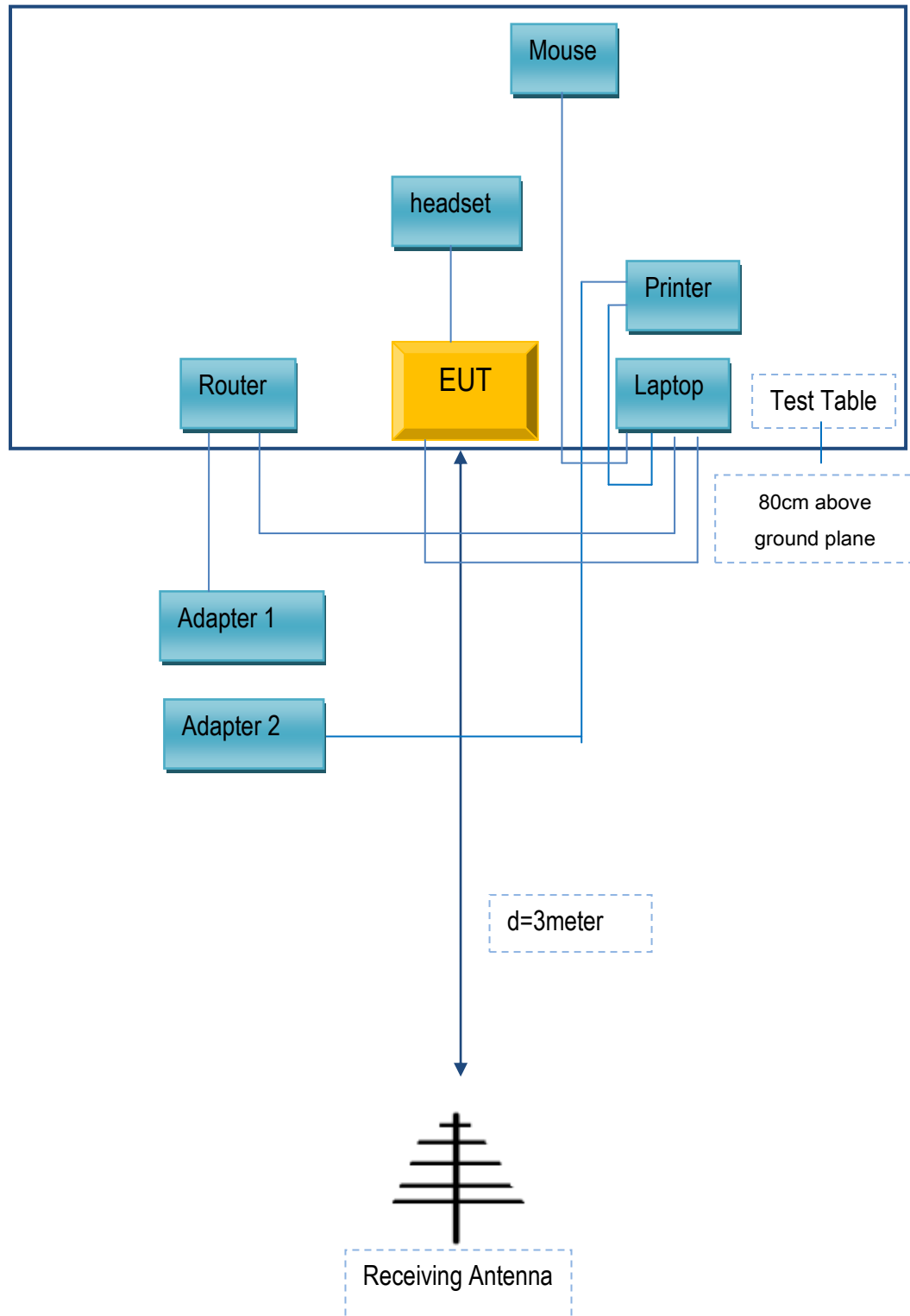
Annex C. TEST SETUP AND SUPPORTING EQUIPMENT

Annex C.ii. TEST SET UP BLOCK

Block Configuration Diagram for Conducted Emissions



Block Configuration Diagram for Radiated Emissions



Annex C. ii. SUPPORTING EQUIPMENT DESCRIPTION

The following is a description of supporting equipment and details of cables used with the EUT.

Supporting Equipment:

Manufacturer	Equipment Description	Model	Serial No
Lenovo	Laptop	E40	LR-1EHRX
GOLDWEB	Router	R102	1202032094
Lenovo	AC Adapter	42T4416	21D9JU
HP	Printer	VCVRA-1003	CN36M19JWX
DELL	Mouse	E100	912NMTUT41481
BULL	Socket	GN-403	GN201203
PCD, LLC	headset	PH201Q	N/A

Supporting Cable:

Cable type	Shield Type	Ferrite Core	Length	Serial No
USB Cable	Un-shielding	No	2m	JX120051274
USB Cable	Un-shielding	No	2m	CBA3000AH0C1
RJ45 Cable	Un-shielding	No	2m	KX156327541
Router Power cable	Un-shielding	No	2m	13274630Z
Printer Power cable	Un-shielding	No	2m	127581031
Power Cable	Un-shielding	No	0.8m	GT211032

Annex D. User Manual / Block Diagram / Schematics / Partlist

Please see the attachment

Annex E. DECLARATION OF SIMILARITY

N/A