



PORTABLE BLUETOOTH CUBE SPEAKER

4000705, 4000706, 4000707, 4000714
User's Guide

We hope you enjoy your AUVIO Portable Bluetooth® Cube Speaker. This speaker can sync with a Bluetooth-enabled device, allowing you to listen to music and receive hands-free calls. Please read this user's guide before using your new speaker.

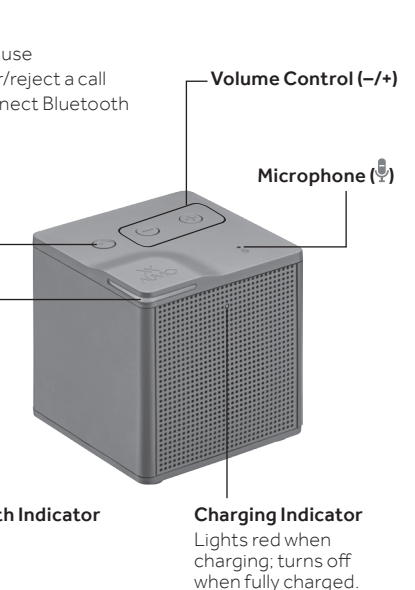
Package Contents

- Portable Bluetooth Cube Speaker
- Micro-USB Charging Cable
- User's Guide

Specifications

Battery..... Rechargeable 500mAh lithium polymer
Battery Charging Voltage..... DC 5V
Battery Charging Time..... approx. 2 hours
Operation Time..... up to 5 hours
Frequency Response..... 150 Hz – 15 kHz
Output Power..... 3 W
Impedance..... 4 ohms
S/N Ratio..... ≥ 65 dB
Driver..... 1.5 in. (38mm) neodymium
Bluetooth Protocol..... V4.0 +EDR
Operation Range..... 30 ft. (9.14m)
Specifications are subject to change and improvement without notice. Actual product may vary from the images found in this document.

2



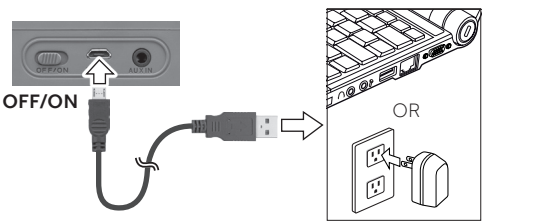
3

Charge Your Speaker

When the battery is low, the speaker beeps.

1. Connect the supplied Micro-USB charging cable to the speaker's **DC 5V** jack and the USB port of your computer or USB charger.
2. Unplug the charging cable when the speaker is fully charged.

Note: The speaker charges whether **ON** or **OFF**.



Lithium Battery Notes:

- Recycle lithium batteries. Do not dispose of them in the trash.
- Do not burn or bury batteries. Do not puncture or crush. Do not disassemble.
- Charge batteries on a fireproof surface away from flammable items or liquids.
- Do not charge inside an automobile, especially while driving.

4

Use Your Speaker

When the battery is low, the speaker beeps.

1. Connect the supplied Micro-USB charging cable to the speaker's **DC 5V** jack and the USB port of your computer or USB charger.
2. Unplug the charging cable when the speaker is fully charged.

Note: The speaker charges whether **ON** or **OFF**.



Lithium Battery Notes:

- Recycle lithium batteries. Do not dispose of them in the trash.
- Do not burn or bury batteries. Do not puncture or crush. Do not disassemble.
- Charge batteries on a fireproof surface away from flammable items or liquids.
- Do not charge inside an automobile, especially while driving.

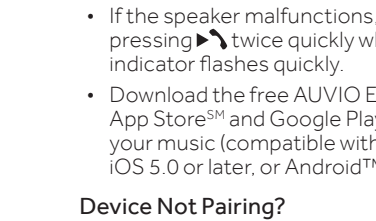
5

Connecting to a Bluetooth Device

When the battery is low, the speaker beeps.

1. Turn on the speaker. The Bluetooth indicator flashes quickly as your speaker searches for Bluetooth devices.
2. Activate your device's Bluetooth function (refer to your device's user's guide). When your device locates **AUVIO BT Mono speaker**, select it. When paired, the indicator flashes slowly.
3. You can control your speaker through your device or with the speaker's **▶/◀** and **+/-** buttons.

Note: The speaker charges whether **ON** or **OFF**.



Lithium Battery Notes:

- Recycle lithium batteries. Do not dispose of them in the trash.
- Do not burn or bury batteries. Do not puncture or crush. Do not disassemble.
- Charge batteries on a fireproof surface away from flammable items or liquids.
- Do not charge inside an automobile, especially while driving.

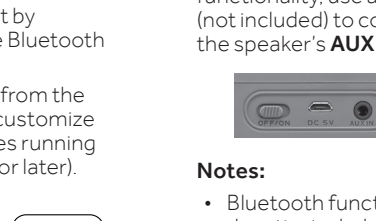
6

Disconnect Your Device

When the battery is low, the speaker beeps.

1. Turn on the speaker. The Bluetooth indicator flashes quickly as your speaker searches for Bluetooth devices.
2. Activate your device's Bluetooth function (refer to your device's user's guide). When your device locates **AUVIO BT Mono speaker**, select it. When paired, the indicator flashes slowly.
3. You can control your speaker through your device or with the speaker's **▶/◀** and **+/-** buttons.

Note: The speaker charges whether **ON** or **OFF**.



Lithium Battery Notes:

- Recycle lithium batteries. Do not dispose of them in the trash.
- Do not burn or bury batteries. Do not puncture or crush. Do not disassemble.
- Charge batteries on a fireproof surface away from flammable items or liquids.
- Do not charge inside an automobile, especially while driving.

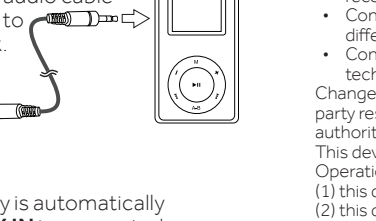
7

Connecting with AUX IN

When the battery is low, the speaker beeps.

1. Turn on the speaker. The Bluetooth indicator flashes quickly as your speaker searches for Bluetooth devices.
2. Activate your device's Bluetooth function (refer to your device's user's guide). When your device locates **AUVIO BT Mono speaker**, select it. When paired, the indicator flashes slowly.
3. You can control your speaker through your device or with the speaker's **▶/◀** and **+/-** buttons.

Note: The speaker charges whether **ON** or **OFF**.



Lithium Battery Notes:

- Recycle lithium batteries. Do not dispose of them in the trash.
- Do not burn or bury batteries. Do not puncture or crush. Do not disassemble.
- Charge batteries on a fireproof surface away from flammable items or liquids.
- Do not charge inside an automobile, especially while driving.

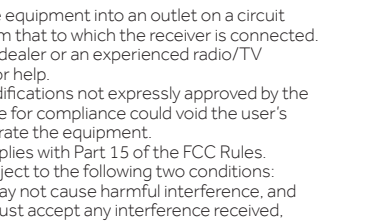
8

Disconnect Your Device

When the battery is low, the speaker beeps.

1. Turn on the speaker. The Bluetooth indicator flashes quickly as your speaker searches for Bluetooth devices.
2. Activate your device's Bluetooth function (refer to your device's user's guide). When your device locates **AUVIO BT Mono speaker**, select it. When paired, the indicator flashes slowly.
3. You can control your speaker through your device or with the speaker's **▶/◀** and **+/-** buttons.

Note: The speaker charges whether **ON** or **OFF**.



Lithium Battery Notes:

- Recycle lithium batteries. Do not dispose of them in the trash.
- Do not burn or bury batteries. Do not puncture or crush. Do not disassemble.
- Charge batteries on a fireproof surface away from flammable items or liquids.
- Do not charge inside an automobile, especially while driving.

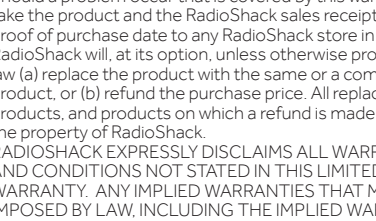
9

Connecting with AUX IN

When the battery is low, the speaker beeps.

1. Turn on the speaker. The Bluetooth indicator flashes quickly as your speaker searches for Bluetooth devices.
2. Activate your device's Bluetooth function (refer to your device's user's guide). When your device locates **AUVIO BT Mono speaker**, select it. When paired, the indicator flashes slowly.
3. You can control your speaker through your device or with the speaker's **▶/◀** and **+/-** buttons.

Note: The speaker charges whether **ON** or **OFF**.



Lithium Battery Notes:

- Recycle lithium batteries. Do not dispose of them in the trash.
- Do not burn or bury batteries. Do not puncture or crush. Do not disassemble.
- Charge batteries on a fireproof surface away from flammable items or liquids.
- Do not charge inside an automobile, especially while driving.

10

Disconnect Your Device

When the battery is low, the speaker beeps.

1. Turn on the speaker. The Bluetooth indicator flashes quickly as your speaker searches for Bluetooth devices.
2. Activate your device's Bluetooth function (refer to your device's user's guide). When your device locates **AUVIO BT Mono speaker**, select it. When paired, the indicator flashes slowly.
3. You can control your speaker through your device or with the speaker's **▶/◀** and **+/-** buttons.

Note: The speaker charges whether **ON** or **OFF**.



Lithium Battery Notes:

- Recycle lithium batteries. Do not dispose of them in the trash.
- Do not burn or bury batteries. Do not puncture or crush. Do not disassemble.
- Charge batteries on a fireproof surface away from flammable items or liquids.
- Do not charge inside an automobile, especially while driving.

11

Connecting with AUX IN

When the battery is low, the speaker beeps.

1. Turn on the speaker. The Bluetooth indicator flashes quickly as your speaker searches for Bluetooth devices.
2. Activate your device's Bluetooth function (refer to your device's user's guide). When your device locates **AUVIO BT Mono speaker**, select it. When paired, the indicator flashes slowly.
3. You can control your speaker through your device or with the speaker's **▶/◀** and **+/-** buttons.

Note: The speaker charges whether **ON** or **OFF**.



Lithium Battery Notes:

- Recycle lithium batteries. Do not dispose of them in the trash.
- Do not burn or bury batteries. Do not puncture or crush. Do not disassemble.
- Charge batteries on a fireproof surface away from flammable items or liquids.
- Do not charge inside an automobile, especially while driving.

12