

130mm

User Manual

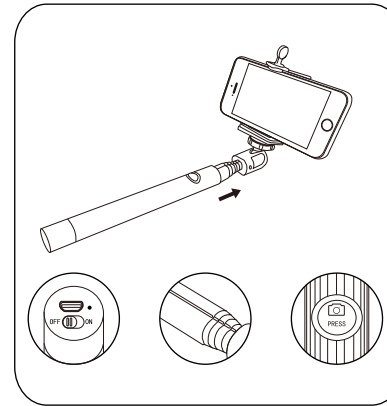
如何連接:

當開啟藍芽自拍杆後,會看到藍灯在閃。
打開你的智能手機/平板電腦的藍牙功能。
搜尋“SFLANYA”之後;按“配對”進行連接。
成功連接後,藍灯會熄滅。你就可以開始使用你的
智能手機/平板電腦的內置相機應用程式進行自拍

故障排除:

如遇上智能手機/平板電腦在已配對但不能運作
的情況,請先在智能手機/平板電腦上取消配對
並關掉藍牙功能,重新開啟自拍杆開關並長按
按鈕4-6秒,直到指示燈閃爍。再重新連接智能
手機/平板電腦便可。

如果紅灯亮著時,電池必須重新充電。



How to connect:

Switch on the selfie stick; blue light will be flashing.
Turn on the Bluetooth of your smartphone/tablet.
Search “ SFLANYA ” then; press “pair” to connect.
After connect successfully; blue light will be off, you
can start taking photos by using the built-in camera
app of your smartphone/tablet.

Touble shooting

If Monopod has been paired with your smartphone/ tablet; however, it can't be function.
Please disconnect Bluetooth with your smartphone/ tablet PC by pressing “Forget your device”
and turn off the monopod. Re-start the monopod by switching to “on” model again and press
the button for 4-6 seconds until the blue light is flashing. Then, pair the monopod to your
smartphone again by following the steps of “how to connect”.

* When red light is on; the battery need to be re-charged.*

Features :

Part No.	ZJ-002A
Support System	IOS & Android
Bluetooth	V3.0
Remote Distance	10m(30ft)
Battery Capacity	50mAh
Standby Time	10 hours
Charging Time	3 hour
Length	Max:915mm Min:315mm

130mm

FCC statements:

This device complies with part 15 of the FCC rules. Operation is subject to the following two conditions: (1) this device may not cause harmful interference, and (2) this device must accept any interference received, including interference that may cause undesired operation.

NOTE: The manufacturer is not responsible for any radio or TV interference caused by unauthorized modifications or changes to this equipment. Such modifications or changes could void the user's authority to operate the equipment.

NOTE: This equipment has been tested and found to comply with the limits for a Class B digital device, pursuant to part 15 of the FCC Rules. These limits are designed to provide reasonable protection against harmful interference in a residential installation. This equipment generates uses and can radiate radio frequency energy and, if not installed and used in accordance with the instructions, may cause harmful interference to radio communications. However, there is no guarantee that interference will not occur in a particular installation. If this equipment does cause harmful interference to radio or television reception, which can be determined by turning the equipment off and on, the user is encouraged to try to correct the interference by one or more of the following measures:

- Reorient or relocate the receiving antenna.
- Increase the separation between the equipment and receiver.
- Connect the equipment into an outlet on a circuit different from that to which the receiver is connected.
- Consult the dealer or an experienced radio/TV technician for help.