

USB Client

Quick Start Flyer

1. Verify Kit Contents



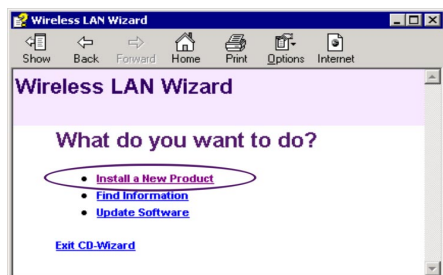
2. Insert CD-ROM

If the CD-ROM does not start automatically, consult the section Troubleshooting.



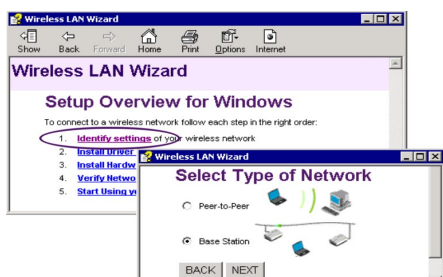
3. Install Software before Hardware

Select **Install New Product**.



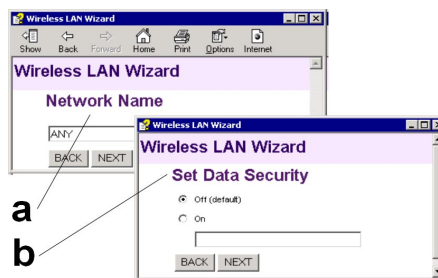
4. Select Identify Settings

Follow the instructions on your screen.

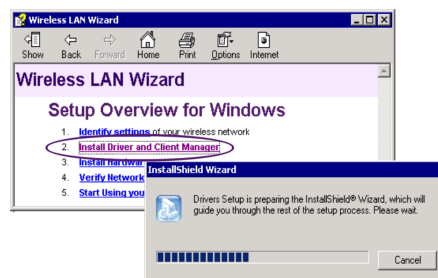


5. Set Network Name & Security Settings

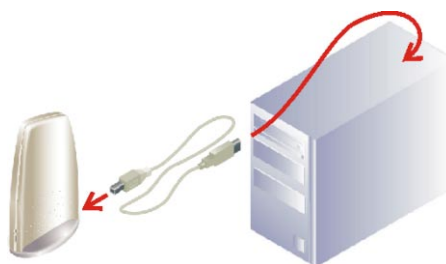
- Enter the Network Name of the wireless network.
- (If required) Adjust Security Settings.



6. Install Driver & Client Manager

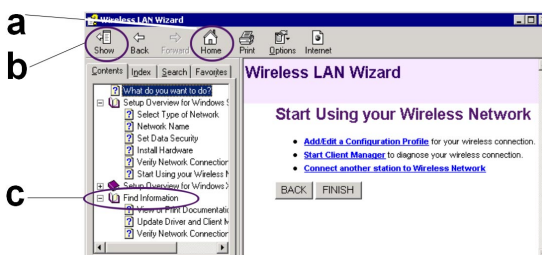


7. Connect USB Client Hardware



8. Start using your Wireless Network

- Use this button to return to the first page.
- Use this button to display the table of contents.
- Select this link to find more information.



Troubleshooting

If the CD-Wizard does not start automatically:

- Click the **Start** button on the Windows task bar and select **Run**.
- Type "**d:\ezsetup.exe**", and click OK (where d:\ represents the drive letter of your CD-ROM drive).

If you have other problems installing or using this product:

- Consult the section "Find Information" on the CD-ROM (described on the previous page).
- Consult the "readme.txt" file on the CD-ROM.
- Contact your hardware Reseller or Manufacturer.

REGULATORY STATEMENT

Technical Support

Universal Scientific Industrial Co., Ltd.

Address : 141, Lane 351, Taiping Road, Sec. 1, Tsao Tuen, Nan-Tou, Taiwan

Tel : + 886-49-2350876, 2325876

Fax : +886-49-2329561, 2337360

E-mail : usi@ms.usi.com.tw

Technical Support in the US

Address : 3590 Peterson Way, Santa Clara, CA 95054, USA

Tel : +1-408-986-6589

Fax : +1-408-432-0440

E-mail : alex_lee@ms.usi.com.tw ; altliao@ms.usi.com.tw

CAUTION: To maintain compliance with FCC's RF exposure guidelines, this equipment should be installed and operated with minimum distance 20cm between the radiator and your body.

Use on the supplied antenna. Unauthorized antenna, modification, or attachments could damage the transmitter and may violate FCC regulations.

This device complies with Part 15 of the FCC Rules. Operation is subject to the following two conditions:

- (1) This device may not cause harmful interference.
- (2) This device must accept any interference received, including interference that may cause undesired operation.



Product Specification

Parameter	Description	
Frequency Range	2400 MHz to 2484 MHz	
Frequency Stability	Within 25 kHz of nominal value	
Transmitter Output Power	15 dBm ± 2 dB	
Nominal Antenna Port Impedance	50	
Media Access Protocol	CSMA/CA with ACK	
Modulation Technique	Direct sequence spread spectrum	
	CCK (11 Mbit/s and 5.5 Mbit/s)	
	DQPSK (2 Mbit/s)	
	DBPSK (1 Mbit/s)	
Spreading	11-chip Barker sequence	
Data Rate	Receiver sensitivity (bit error rate < 10 ⁻⁵)	Delay spread robustness (FER < 1%)
11 Mbits/s	-82 dBm	65 ns
5.5 Mbits/s	-87 dBm	225 ns
2 Mbits/s	-91 dBm	400 ns
1 Mbits/s	-94 dBm	500 ns