



**SONOS**



Wireless Charger  
Important Product Information



THIS DOCUMENT CONTAINS INFORMATION THAT IS SUBJECT TO CHANGE WITHOUT NOTICE.

No part of this publication may be reproduced or transmitted in any form or by any means, electronic or mechanical, including but not limited to photocopying, recording, information retrieval systems, or computer network without the written permission of Sonos, Inc. SONOS and all other Sonos product names and slogans are trademarks or registered trademarks of Sonos, Inc. SONOS Reg. U.S. Pat. & Tm. Off. Sonos products may be protected by one or more patents. Our patent-to-product information can be found here: [sonos.com/legal/patents](https://sonos.com/legal/patents).

All other products and services mentioned may be trademarks or service marks of their respective owners.

040121

© 2004-2021 by Sonos, Inc. All rights reserved.

#### Terms of Use, License, Warranty, and Privacy

To use this Sonos product you have to accept the Sonos Terms of Use, License and Warranty Agreement, available at [www.sonos.com/legal/terms-of-use](https://www.sonos.com/legal/terms-of-use). Sonos privacy statement is available at [www.sonos.com/legal/privacy](https://www.sonos.com/legal/privacy).

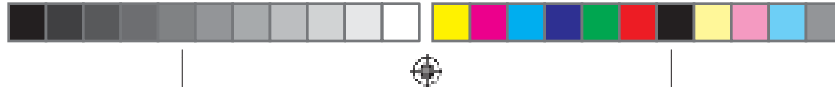
#### Guides

For the latest Sonos product documentation, please go to [www.sonos.com/guides](https://www.sonos.com/guides).

#### Customer Support

Visit our Website at [www.sonos.com/support](https://www.sonos.com/support). There you can browse our Knowledge Base or request assistance.

**Note:** If a red LED appears on the wireless charger, it indicates the presence of a foreign metal object or an internal fault. Go to <https://faq.sonos.com/chargerlight> to learn more.



1

To charge WPC, just place Sonos Roam on the smooth, magnetized side of the wireless charger. The wireless charger may charge other Qi-compliant power receiver. When the Qi-compliant power receiver is placed on the WPC, the charge will start to work. Do not place metallic or magnetic foreign objects between the wireless charger and the power receiver, as this could cause heating of the foreign object or cause the device not to charge properly. Examples of these objects include coins, jewelry, and credit cards.

The BLE radio shall not transmit any packets when no device is receiving power from the wireless charger. The BLE radio shall begin transmitting advertising packets within 1 second of a device placed on the wireless charger. The BLE radio shall stop transmitting 60 seconds +/- 1 seconds after a device is placed on the wireless charger. The BLE radio shall transmit advertising packets at a frequency of 2 Hz.

How to verify BLE:

Record advertising packets using BLE diagnostic tools starting with no device on the wireless charger, then continue recording for 90 seconds after placing a Qi receiver on the Wireless Charger

Frequency range (MHz)	H-Field Strength
WPC 112-148kHz	-10.70dBuA/m
Frequency range (MHz)	Max. Transmit Power (dBm/mW)
BLE 2402-2480MHz	-0.08 dBm/0.00098 mW



## 2 Regulatory Information



Available at: <https://www.sonos.com/support/policies>

### Declaration of Conformity

Hereby, Sonos, Inc. declares that the model name: LPS-05WB-I is in compliance with Directive 2014/53/EU. The full text of the EU Declaration of Conformity is available at <https://www.sonos.com/support/policies>.

RF Exposure Information (MPE)

This equipment should be installed and operated with minimum distance 20cm between the radiator & your body.

### Canada

The installer of this radio equipment must ensure that the product is located such that it does not emit RF field in excess of Health Canada limits for the general population; consult Safety Code 6, obtainable from Health Canada's Website [www.hc-sc.gc.ca/rpb](http://www.hc-sc.gc.ca/rpb). As mentioned before, the installer cannot control the antenna orientation. However, they could place the complete product in a way that causes the problem mentioned above.

This class B digital apparatus complies withISED CANICES-003(B), NMB-003 (B), RSS-GEN, RSS-216, and RSS-247. This device contains licence-exempt transmitter(s) /receiver(s) that comply with Innovation, Science and Economic Development Canada's licence-exempt RSS(s). Operation is subject to the following two conditions: (1). This device may not cause interference. (2). This device must accept any interference, including interference that may cause undesired operation of the device

L'installateur du présent matériel radio doit veiller à ce que le produit soit placé ou orienté de manière à n'émettre aucun champ radioélectrique supérieur aux limites fixées pour le grand public par le ministère fédéral Santé Canada consultez le Code de sécurité 6 sur le site Web de Santé Canada à l'adresse : [www.hc-sc.gc.ca/rpb](http://www.hc-sc.gc.ca/rpb). Comme indiqué auparavant, l'installateur ne peut pas contrôler l'orientation de l'antenne. Il peut néanmoins placer le produit tout entier de manière à provoquer le problème décrit ci-dessus. Cet appareil numérique de classe B est conforme à ISED CANICES-003 (B), à NMB-003 (B), à RSS-GEN, à RSS-216 et à RSS-247. L'émetteur/récepteur exempt de licence contenu dans le présent appareil est conforme aux CNR d'Innovation, Sciences et Développement économique Canada applicables aux appareils radio exempts de licence. L'exploitation est autorisée aux deux conditions suivantes : (1) L'appareil ne doit pas produire de brouillage; (2) L'appareil doit accepter tout brouillage radioélectrique subi, même si le brouillage est susceptible d'en compromettre le fonctionnement



3

### RF Exposure Requirements

To comply with FCC and Industry Canada exposure essential requirements, a minimum separation distance of 20cm (8 inches) is required between the equipment and the body of the user or nearby persons.

This device complies with Part 15 of the FCC Rules. Operation is subject to the following two conditions: (1) this device may not cause harmful interference and (2) this device must accept any interference received, including interference that may cause undesired operation.

**Warning:** Changes or modifications not expressly approved by the party responsible for compliance could void the user's authority to operate the equipment.

**Note:** This equipment has been tested and found to comply with the limits for a Class B digital device pursuant to Part 15 of the FCC Rules. These limits are designed to provide reasonable protection against harmful interference in a residential installation.

This equipment generates, uses, and can radiate radio frequency energy and, if not installed and used in accordance with the instructions, may cause harmful interference to radio communications. However, there is no guarantee that interference will not occur in a particular installation. If this equipment does cause harmful interference to radio or television reception, which can be determined by turning the equipment off and on, the user is encouraged to try to correct the interference by one or more of the following measures: (1) Reorient or relocate the receiving antenna. (2) Increase the separation between the equipment and receiver. (3) Connect the equipment into an outlet on a circuit different from that to which the receiver is connected. (4) Consult the dealer or an experienced radio/TV technician to help.

### Exigences en matière d'exposition aux radiofréquences

Pour satisfaire aux exigences essentielles de la FCC et d'Industrie Canada concernant l'exposition, une distance minimum de 20 cm (8 pouces) doit être respectée entre l'équipement et l'utilisateur ou des personnes se trouvant à proximité.

### Recycling Information



This symbol on the product or on its packaging indicates that this product shall not be treated as household waste. Instead please deliver it to the applicable collection point for the recycling of electrical and electronic equipment. By recycling this product correctly, you will help conserve natural resources and prevent potential negative





4  
environmental consequences. For more detailed information about recycling of this product, please contact your local city office, your household waste disposal service or the shop where you purchased the product.

**Nom 024 information (Mexico only)**  
**Información para Nom 024 (únicamente para Mexico)**

**EU**  
**Importer name/address**  
Company: Sonos Inc.  
Address: 614 Chapala Street, Santa  
Barbara, CA 93101  
Contact name: Zibo Nelson  
Contact TEL no: (+1) 805 965 3001

**Mexico**  
**Nombre / dirección del importador**  
Company: Viastara SA de CV  
Address: Blvd. Adolfo López Mateos 261,  
Ampliación Los Alpes,  
Álvaro Obregón, 01010  
Ciudad de México, CDMX, Mexico  
Contact name: Jesus Ledesma  
Email : jesusledesma@viastara.com

Grupo de Desarrollo Inteligente. (a.k.a.  
Inteligos)  
Address: Blvd. Rogelio Cantú Gómez 370,  
Santa María, 64650 Monterrey, N.L.,  
Mexico:  
Contact: Flavia Canamar  
email: flavia.canamar@inteligos.com



Equipment	Equipo	Wireless Charger
Brand Name	Nombre de la marca	Sonos
Model Name	Nombre del modelo	LPS-05WB-I
Customer Service Center	Centro de atención al cliente	Sonos, Inc. 614 Chapala St. Santa Barbara, CA 93101 1 (800) 680-2345 www.sonos.com
Sonos Terms of Use, License and Warranty Agreement	Acuerdo de licencia y garantía y condiciones de uso	www.sonos.com/legal/terms-of-use
Input	Entrada	5V +/- 5%, 2.1 A max, 10.2 W max
Output	Salida	5V max, 1 A max, 5W max
Weight	Peso	75 gm
Operating Temperature	Temperatura de funcionamiento	De 0 °C a 40 °C (de 32 °F a 104 °F)



