



ZHIYUN-EN-V1.0.0

# SMOOTH-Q3

Quick start guide

Quick start guide

EN 1

## EN - Quick start guide

### 1. Getting Started



#### Download "ZY Cami"

Before using SMOOTH-Q3, please scan the QR code to download "ZY Cami" and activate the product. See P5 for activation steps.  
(Android 7.0 above and iOS 10.0 above required)

#### Read The Full-Version User Guide

To protect the environment and reduce the consumption of resources, the paper user guide of this product will not be in full version. For the full version, please choose one of the methods below.



1. Use the phone browser to scan the QR code on the right.
2. Open ZY Cami app, go to the home page of the corresponding product and tap the icon on the upper right corner.
3. Download at the official ZHIYUN website [www.zhiyun-tech.com](http://www.zhiyun-tech.com).

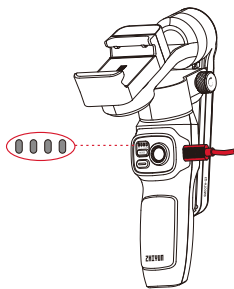


Scan the QR code to watch SMOOTH-Q3 video tutorials

Follow the steps below to get to know the basic functions of SMOOTH-Q3. Please read the entire full-version user guide carefully before using the product.

### 2. Charging

Use provided Type-C cable to connect the power adapter (not included in the package, 5V2A rated power adapter recommended) to the charging port on the stabilizer. The four indicator lights on the stabilizer stay on when charging is completed.



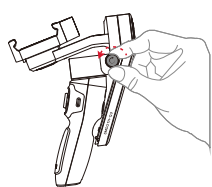
[zhiyun-tech.com](http://zhiyun-tech.com)

EN 2

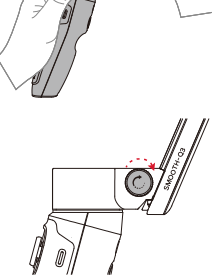
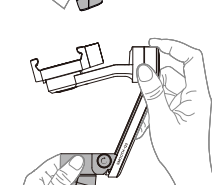
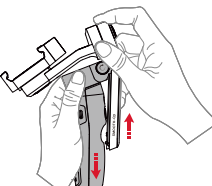
Quick start guide

### 3. Installation and Balance Adjustment

1. Loosen the lock screw of the vertical arm counterclockwise.



2. To ensure good contact with the contact points, pull the pan axis motor to the bottom of the vertical arm while holding the roll and pan axes motors until you hear a "click" sound. Tighten the lock screw of the vertical arm clockwise.

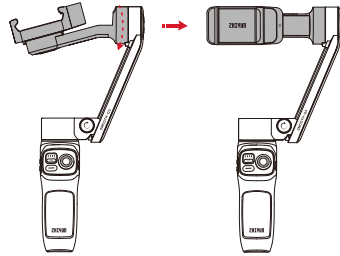


[zhiyun-tech.com](http://zhiyun-tech.com)

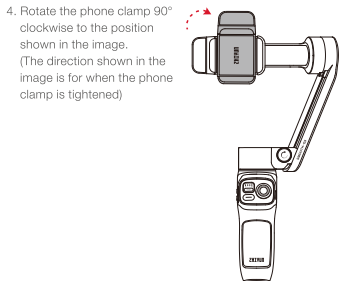
Quick start guide

EN 3

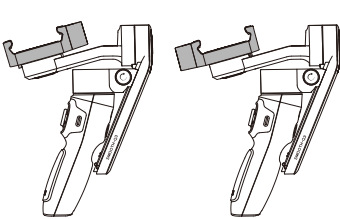
3. Rotate the tilt axis arm along the outer edge shown in the image.



Please rotate in the correct direction shown in the image to prevent the fixing buckle of the tilt axis from damaging.



When putting the stabilizer back into the box, please rotate the phone clamp to the storage state as shown in the image.



Storage state

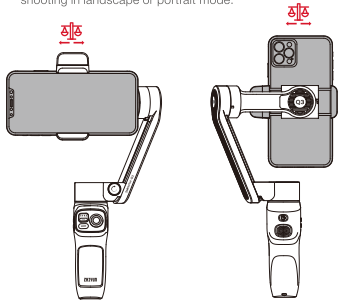
Phone clamp tightened

[zhiyun-tech.com](http://zhiyun-tech.com)

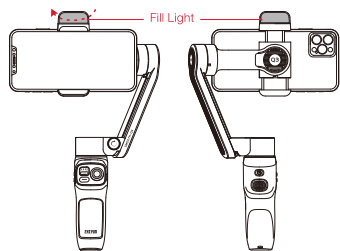
EN 4

Quick start guide

5. When mounting the phone, make sure the phone camera is on the left side of the clamp and adjust the balance for shooting in landscape or portrait mode.

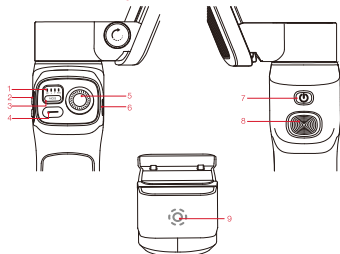


6. Rotate the fill light when needed. The maximum rotate angle is 180°.



Please rotate in the correct direction.

### 4. Button Description



[zhiyun-tech.com](http://zhiyun-tech.com)

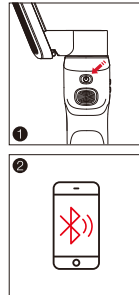
Quick start guide

EN 5

1. Indicator Lights
2. Zoom Rocker
3. MODE Button
  - Single press to switch stabilizer modes. Double press to go back to the previous mode. Press and hold to enter/exit standby mode.
4. Photo/Video
  - Single press to take photos/film videos. Double press to switch photo/video mode. Press three times to switch front/rear camera. Press and hold to take multiple photos.
5. Joystick
6. Type-C Charging/Firmware Update Port
7. Power Button
  - Single press to check the battery level. Press and hold for 3 seconds to power on/off. Press 8 times to reset Bluetooth.
8. Trigger Button
  - Single press to enable Smart Following. Double press for reposition. Triple press to switch between Landscape Mode and Portrait Mode. Press and hold to enter PhoneGo Mode.
9. Fill Light Switch/Brightness Switch
  - When the device is powered on, single press to adjust brightness in three levels. Press and hold for 1.5s to turn on/off the fill light.

### 5. Connect with "ZY Cami" APP

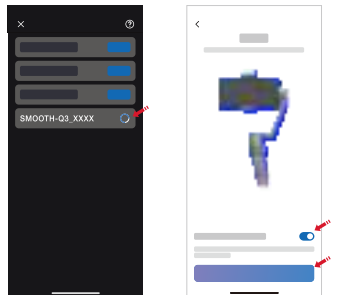
1. Power on SMOOTH-Q3 and turn on Bluetooth on the smartphone.
  2. Launch the "ZY Cami" app. Tap the icon in the upper left corner in the home screen to open the device list and select the SMOOTH-Q3 device you wish to connect (the SMOOTH-Q3 Bluetooth name can be checked on the side of the tilt axis USER ID: XXXX).
  3. Activation on the ZY Cami app is required if the SMOOTH-Q3 is being used for the first time, otherwise the motor will not work. You need to register and log in the ZHIYUN account for activation. Internet connection is required.
  4. After the activation succeeds, the motor will work normally and the shooting interface will pop up automatically on the app.
- ① Users can make better use of the various functions of SMOOTH-Q3 with the dedicated app "ZY Cami".  
② ZY Cami is subject to update. Please always refer to the latest version.



[zhiyun-tech.com](http://zhiyun-tech.com)

EN 6

Quick start guide



### Disclaimer and Warning

Thank you for purchasing SMOOTH-Q3. The information contains herein affects your safety, legitimate rights and obligation. Please read this instruction carefully to ensure proper configuration before use. Failure to read and follow this instruction and warnings herein may result in serious injury to you or bystanders, or damage to your device or property. Gulin Zhishen Information Technology Co., Ltd (hereinafter referred to as "ZHIYUN") reserves all rights for final explanation on this instruction and other documents related to SMOOTH-Q3. The information is subject to update without notice. Please visit [www.zhiyun-tech.com](http://www.zhiyun-tech.com) to obtain the latest product information.

By using this product, you hereby signify that you have read this document carefully and that you understand and agree to abide by the terms and conditions herein. You agree that you are solely responsible for your own conduct while using this product, and for any consequences thereof. You agree to use this product only for purposes that are proper and in accordance with all terms, precautions, practices, policies and guidelines ZHIYUN has made and may make available.

ZHIYUN accepts no liability for damage, injury or any legal responsibility incurred directly or indirectly from the use of this product. Users shall observe safe and lawful practices including, but not limited to, those set forth herein.

ZHIYUN™ is the trademark of Gulin Zhishen Information Technology Co., Ltd and its affiliates. All product names or trademarks referred to herein are trademarks or registered trademarks of their respective holders.

### Reading Tips

Legends: Hints and Tips Important  
Scan the QR code and operate under carrier network may cause traffic fee which will be charged by your carrier. It is recommended to operate under Wi-Fi.

### Warnings

Read the ENTIRE User Guide to become familiar with the features of this product before operating. Failure to operate the product correctly can result in damage to the product or personal property, and cause serious injury. This is a sophisticated product. It must be operated with caution and common sense and requires some basic mechanical ability. Failure to operate this product in a safe and responsible manner could result in injury or damage to the product or other property. This product is intended for use by children without direct adult supervision. DO NOT use with incompatible

[zhiyun-tech.com](http://zhiyun-tech.com)

Quick start guide

EN 7

components or in any way otherwise as mentioned or instructed in the product documents provided by ZHIYUN. The safety guidelines herein contain instructions for safety, operation and maintenance. It is essential to read and follow all of the instructions and warnings in the User Guide, prior to assembly, setup or use, in order to operate the product correctly and avoid damage or serious injury.

### Safe Operation Guidelines

#### WARNING:

1. Never allow the product to come into contact with any liquid. Never immerse the product in water or make it get wet. Never use the product in the rain or a humid environment. Corrosion reaction may occur when the interior of the product is exposed to water, which may cause the battery to ignite spontaneously and may even cause an explosion.
2. If the product catches fire, please use water or water mist, sand, fire blanket, dry powder, carbon dioxide fire extinguisher immediately to put out the fire. Please choose the method according to the actual situation.
3. Please use the product in an environment with a temperature between -10°C and 45°C.
4. It is forbidden to disassemble the product in any way. If the battery is pierced during disassembly, it will cause the electrolyte inside the battery to leak or even cause fire or explosion.
5. Mechanical impact, rolling, or throwing of the product is prohibited. Do not place heavy objects on the product.
6. Do not heat the product. Do not place the product in a microwave oven or pressure cooker.
7. It is forbidden to place the product near a heat source (stove or heater, etc.) or inside the car in hot weather. Do not store the product in an environment above 45°C. The ideal temperature of storage is 22°C to 28°C.
8. Do not store the battery for a long time after it is completely discharged to avoid the battery entering the over-discharged state and causing damage to the battery cell, and it will not be able to resume use.

#### BE CAREFUL:

1. SMOOTH-Q3 is a high-precision control device. Damage may be caused to SMOOTH-Q3 if dropped or subject to external force, and this may result in malfunction.
2. Make sure the rotation of the gimbal axes is not blocked by external force when SMOOTH-Q3 is turned on.
3. SMOOTH-Q3 is not waterproof. Prevent contacts of any kind of liquid or cleaner with the SMOOTH-Q3. It is recommended to use dry cloth for cleaning.
4. Protect SMOOTH-Q3 from dust and sand during use.

#### CAUTION:

1. After the charging is complete, disconnect the product from the charger.
2. If you do not use the product for more than 10 days, please charge/discharge the battery to 40%-65% and store it to extend the battery life.
3. Recharge and discharge every 3 months to keep the battery active.
4. Keep the handle stable when powering on the SMOOTH-Q3. Shaking during power-on may fail to start.

### Warranty Period

1. Customers are entitled to replacement or free repair service in case of quality deficits found in the product within 15 days upon receipt of the product.
2. Customers are entitled to free repair service from ZHIYUN for any product proven defective in material or workmanship that results in product failure during normal consumer usage and conditions within the valid warranty period, which is 12 months counting from the date of selling. However, warranty period varies by product component and country of purchase. Please contact our after-sales service team on ZHIYUN official website or your place of purchase for detailed warranty information.

[zhiyun-tech.com](http://zhiyun-tech.com)

EN 8

Warranty card

### Warranty Exclusions

1. Products subjected to unauthorized repair, misuse, collision, neglect, mishandling, soaking, accident, and unauthorized alteration.
2. Products subjected to improper use or whose labels or security tags have been torn off or altered.
3. Products whose warranty has expired.
4. Products damaged due to force majeure, such as fire, flood, lightning, etc.

### Warranty Claim Procedure

1. If failure or any problem occurs to your product after purchase, please contact a local agent for assistance, or you can always contact ZHIYUN's customer service through email at [service@zhiyun-tech.com](mailto:service@zhiyun-tech.com) or website at [www.zhiyun-tech.com](http://www.zhiyun-tech.com).
2. Your local agent or ZHIYUN's customer service will guide you through the whole service procedure regarding any product issue or problem you have encountered. ZHIYUN reserves the right to reexamine damaged or returned products.

### Warranty card

Product model: SM 113

Customer information

Customer Name : Contact No :

Address :

Sales information

Sales Date : Prod. Serial No :

Dealer :

Contact No :

#1 Maintenance Record

Service Date : Signature of Repairman :

Cause of Problem :

Service Result :

☐ Solved

☐ Unsolved

☐ Refunded (Replaced)



Please download the latest version from [www.zhiyun-tech.com](http://www.zhiyun-tech.com)  
This document is subject to change without notice.  
ZHIYUN™ are the trademark of ZHI-SHEN.  
Copyright © 2021 ZHI-SHEN. All rights reserved.  
Tel: +86 400 900 6968  
USA Hotline: +1 808-319-6137, 9:00-18:00 GMT-7, Mon-Fri  
Europe Hotline: +49 (0)6101 8132 180, 10:00-17:00 GMT+1, Mon-Fri  
Email: [service@zhiyun-tech.com](mailto:service@zhiyun-tech.com)  
Website: [www.zhiyun-tech.com](http://www.zhiyun-tech.com)  
Address: 09 Huangtong Road, Tieshan Industrial Zone, Qixing District, Gulin, 541004, Guangxi, China

[zhiyun-tech.com](http://zhiyun-tech.com)

**FCC STATEMENT :**

This device complies with Part 15 of the FCC Rules. Operation is subject to the following two conditions:

- (1) This device may not cause harmful interference, and
- (2) This device must accept any interference received, including interference that may cause undesired operation.

**Warning:** Changes or modifications not expressly approved by the party responsible for compliance could void the user's authority to operate the equipment.

NOTE: This equipment has been tested and found to comply with the limits for a Class B digital device, pursuant to Part 15 of the FCC Rules. These limits are designed to provide reasonable protection against harmful interference in a residential installation. This equipment generates uses and can radiate radio frequency energy and, if not installed and used in accordance with the instructions, may cause harmful interference to radio communications. However, there is no guarantee that interference will not occur in a particular installation. If this equipment does cause harmful interference to radio or television reception, which can be determined by turning the equipment off and on, the user is encouraged to try to correct the interference by one or more of the following measures:

- Reorient or relocate the receiving antenna.

- Increase the separation between the equipment and receiver.

- Connect the equipment into an outlet on a circuit different from that to which the receiver is connected.

- Consult the dealer or an experienced radio/TV technician for help.

**RF warning statement:**

The device has been evaluated to meet general RF exposure requirement. The device can be used in portable exposure condition without restriction.