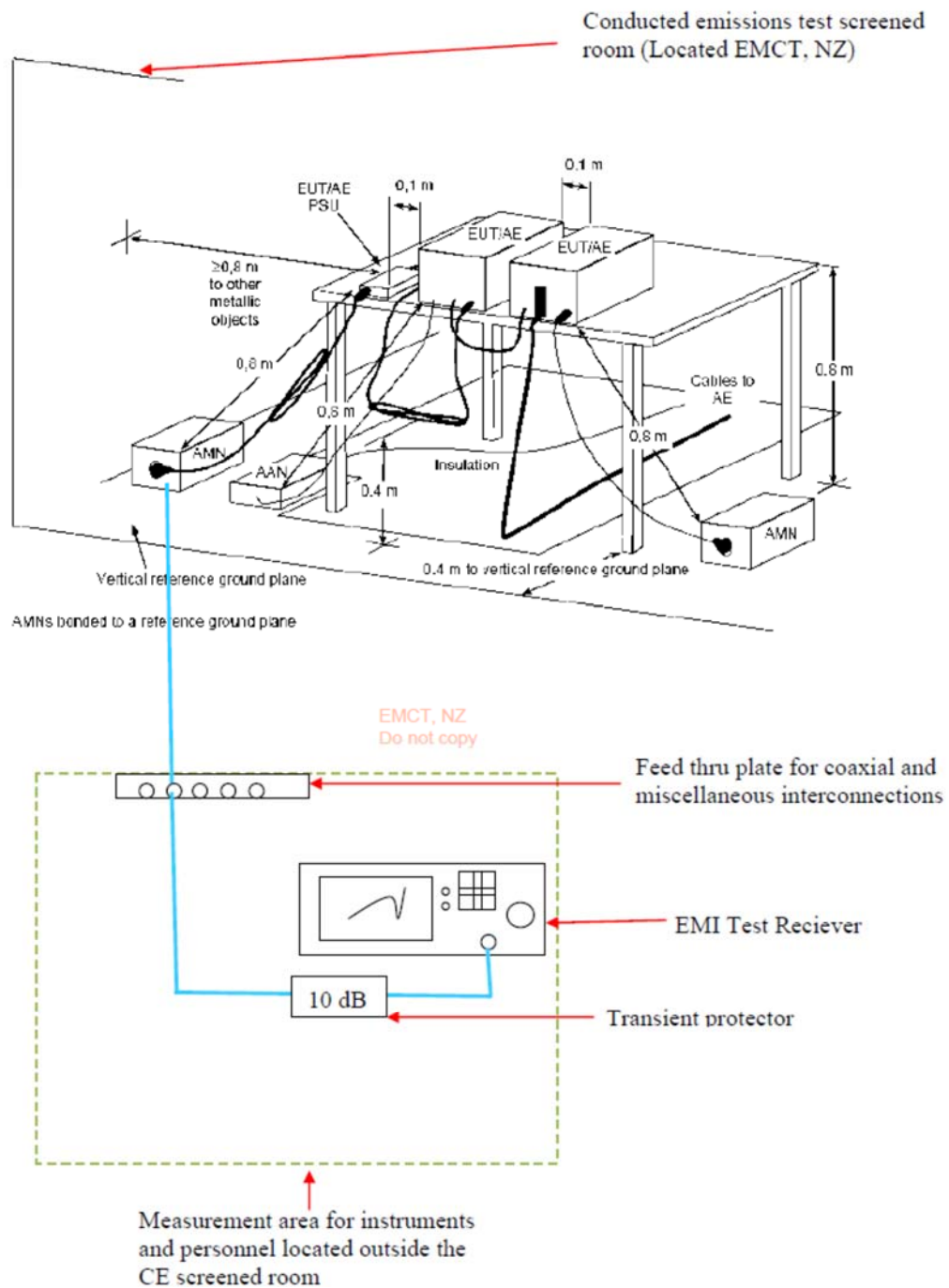
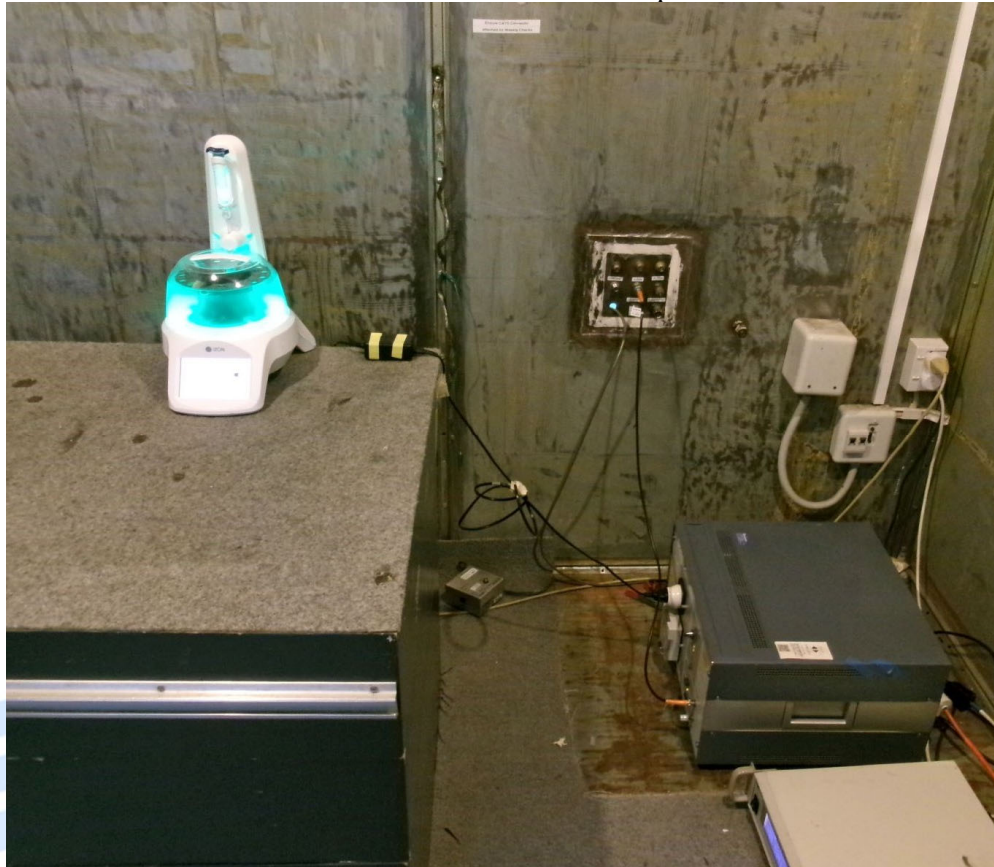


**Block Diagram showing the conducted emission test setup**



EMI Receiver Used: ESHS 10

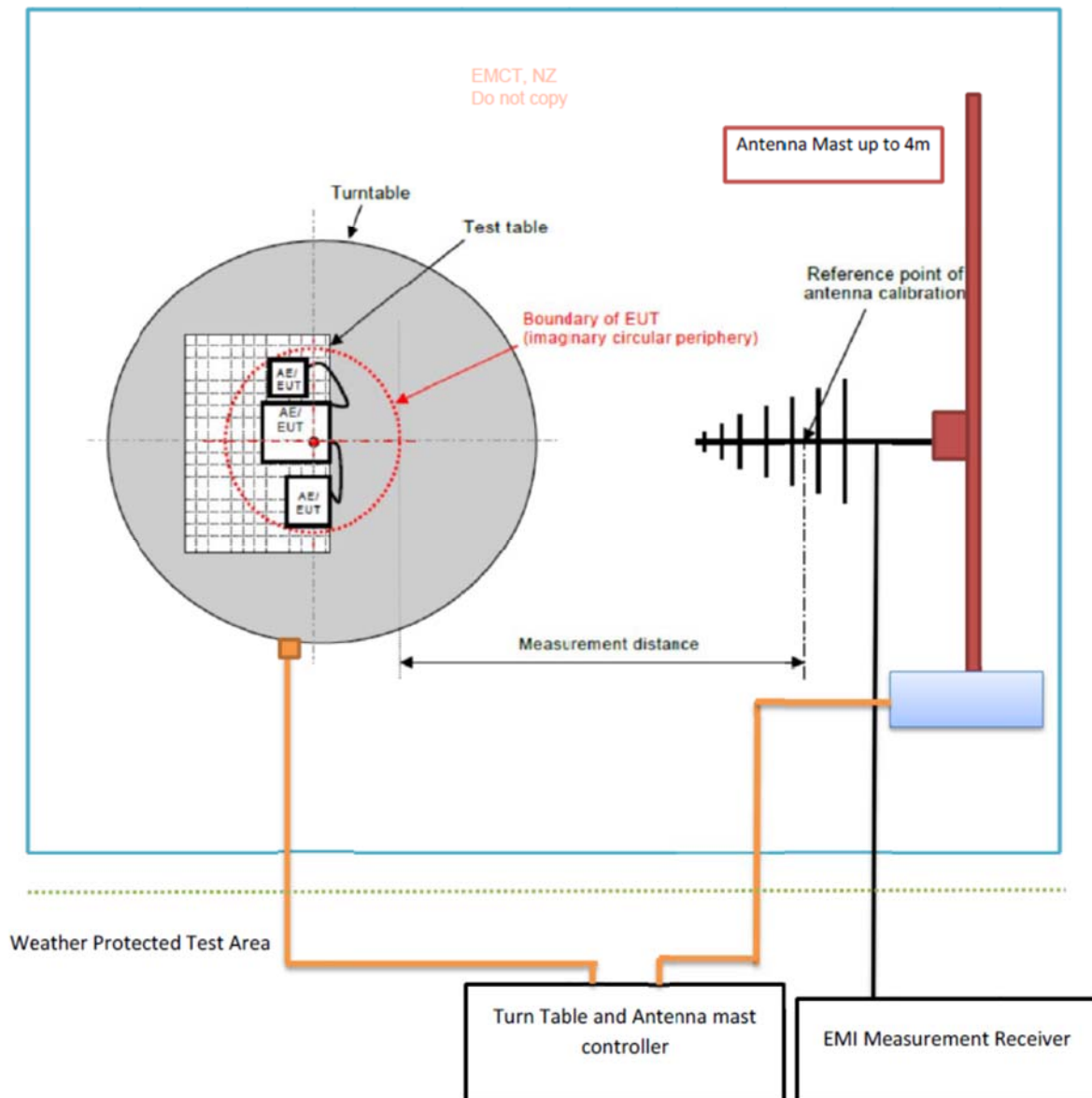
Conducted Emissions Setup



Conducted Emissions Setup - Side View



### Radiated Emissions Test setup at Open area test site



Below 30 MHz: Loop Antenna; Measurement distance: 10 m

30 MHz-300 MHz: Bi conical Antenna; Measurement distance: 3 m

300 MHz- 1000 MHz: Log Periodic Antenna; Measurement distance: 3 m

Above 1 GHz: Horn Antenna; Measurement distance: 3 m

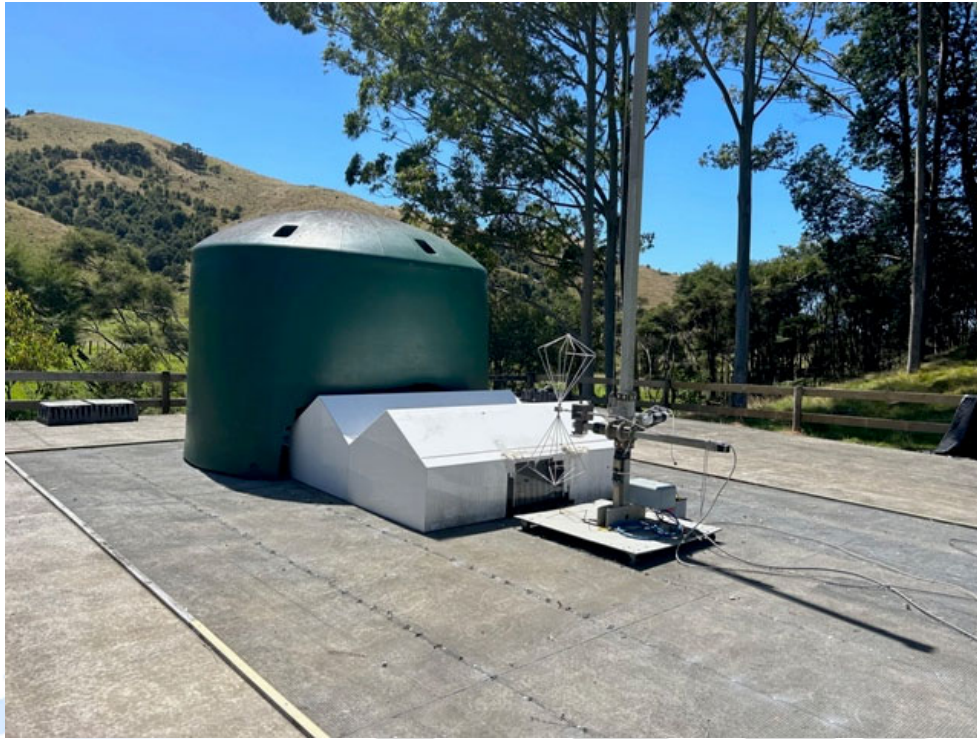
EMI Receiver Used: ESIB40



Radiated Emissions Setup

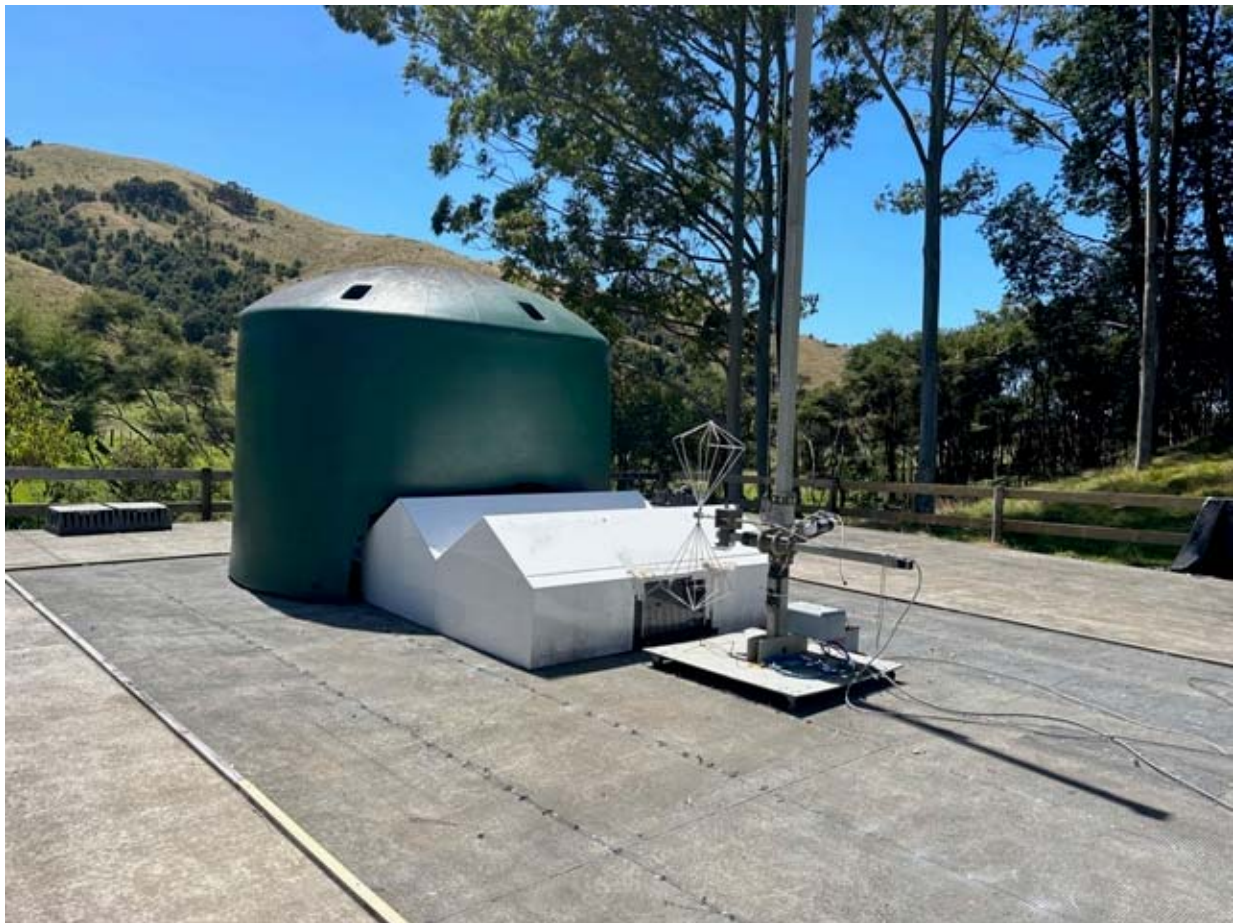


## Test Site Photos





Biconical Antenna





Biconical Antenna



Log Periodic Antenna





Log Periodic Antenna



1 – 18 GHz Horn Antenna





**Test shed showing a loop antenna in use.**



