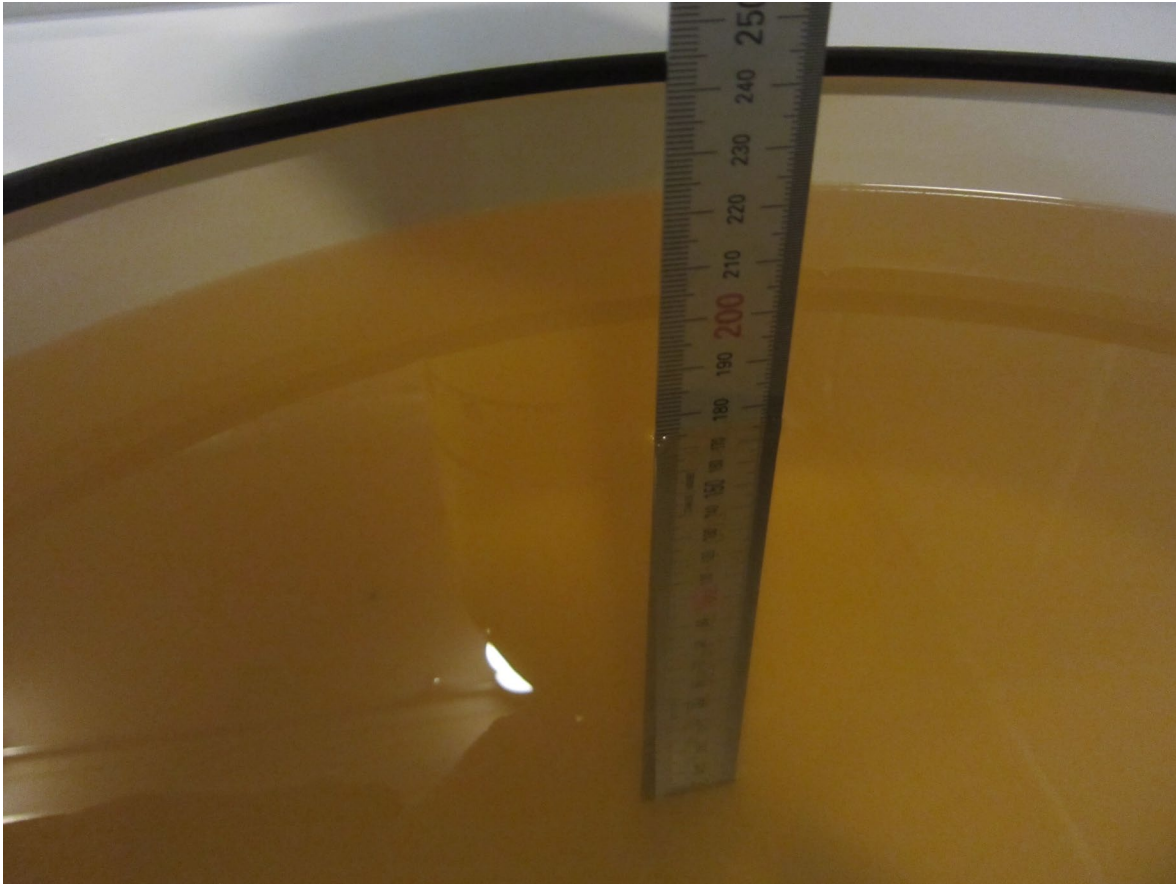


SAR Test Setup Photographs

- Extremity SAR Test Photo

■ Test Setup Photo (Liquid depth)



Note: The liquid depth is maintained at a minimum depth of 15 cm to minimize reflections from the upper surface.

■ Test Setup Photo (Extremity SAR Test Photo)



■ Test Setup Photo (Top)_FCC#1



■ Test Setup Photo (Top)_FCC#2



■ Test Setup Photo (Bottom)_FCC#1



■ Test Setup Photo (Bottom)_FCC#2



■ Test Setup Photo (Front)_FCC#1



■ Test Setup Photo (Front)_FCC#2



■ Test Setup Photo (Rear)_FCC#1



■ Test Setup Photo (Rear)_FCC#2



■ Test Setup Photo (Right)_FCC#1



■ Test Setup Photo (Right)_FCC#2



■ Test Setup Photo (Left)_FCC#1



■ Test Setup Photo (Left)_ FCC#2



■ Test Setup Photo (Rear)_ FCC#3

