

9ACP 88 94V-0  
E243951  
KT 1842

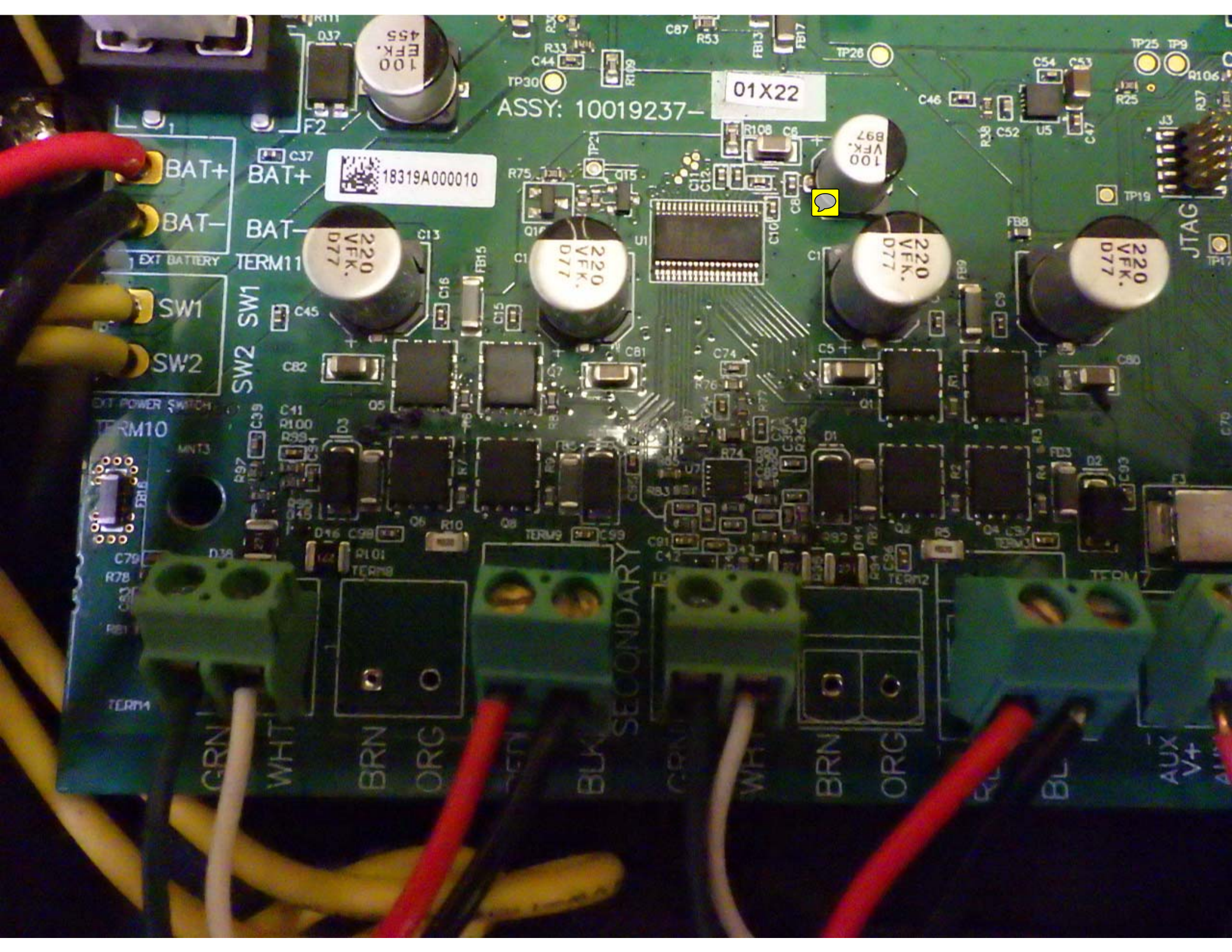


ASSY: 10019237

01X22

18319A000010





ASSY: 10019237-

01X22

18319A000010



BAT+

BAT+

BAT-

BAT-

SW1

SW1

SW2

SW2

EXT BATTERY

TERM11

EXT POWER SWITCH

TERM10

MNT3

D3A

TERM1

GRN

WHT

BRN

ORG

BLK

SECONDARY

GRN

WHT

BRN

ORG

BLK

BLK

AUX

V+

AUX



25

150  
100  
E.F.K.  
A55

ASSY: 10019237-01X22

18319A000010

100  
V.F.K.  
B97

220  
V.F.K.  
D77

220  
V.F.K.  
D77

220  
V.F.K.  
D77

BAT+

BAT+

BAT-

BAT-

EXT BATTERY

TERM11

SW1

LWS

SW2

SW2

EXT POWER SWITCH

TERM10

MNT3

TERM9

TERM1

TERM2

TERM3

TERM14



CP 88 94V-0  
E243951  
KT 1842

ASSY: 10019237-

01X22

18319A000010

BAT+  
BAT-  
EXT BATTERY  
SW1  
SW2  
EXT POWER SWITCH

LMS  
ZMS

220  
VFK.  
D77

220  
VFK.  
D77

220  
VFK.  
D77

220  
VFK.  
D77

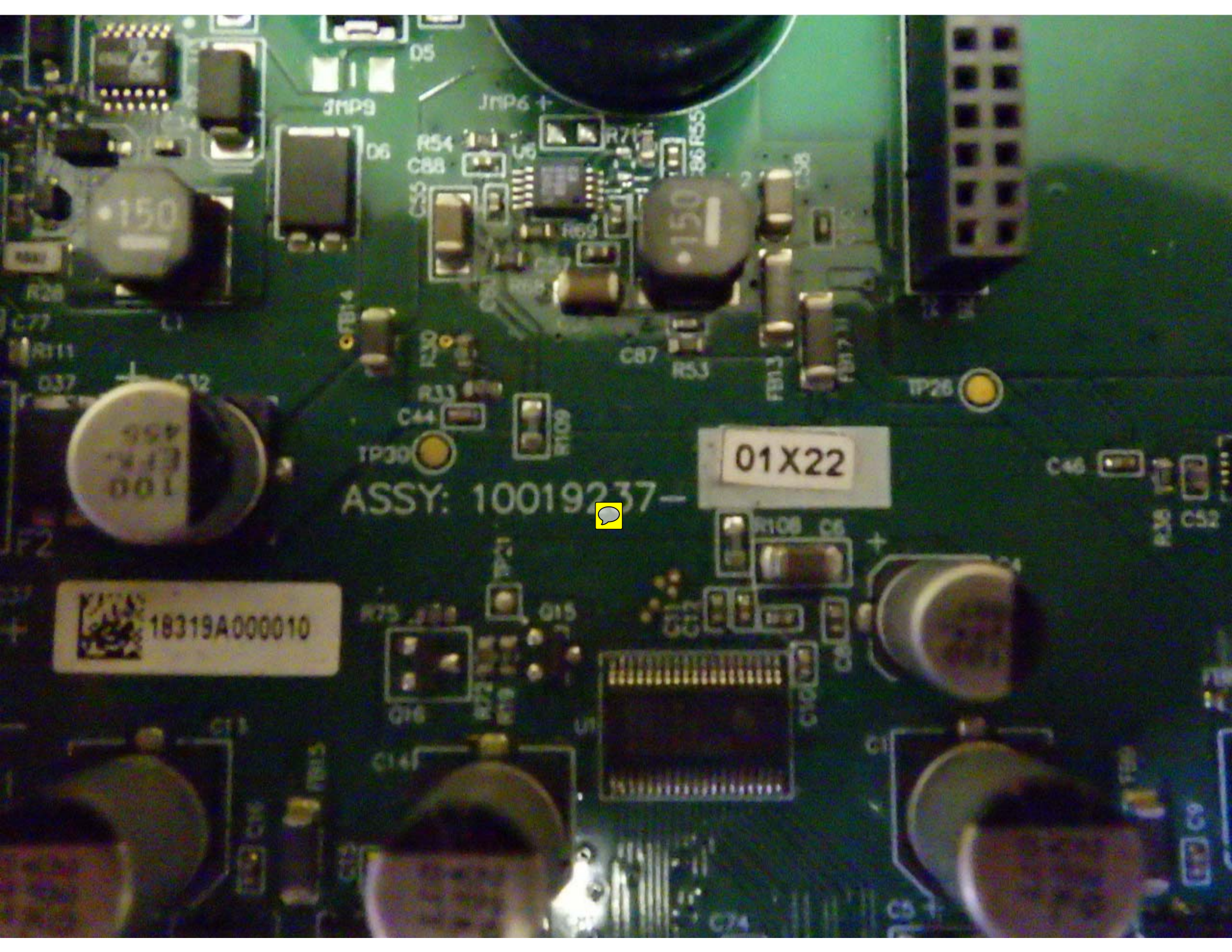
100  
EFK.  
455

100  
VFK.  
B97

PWR+ EARTH PWR-





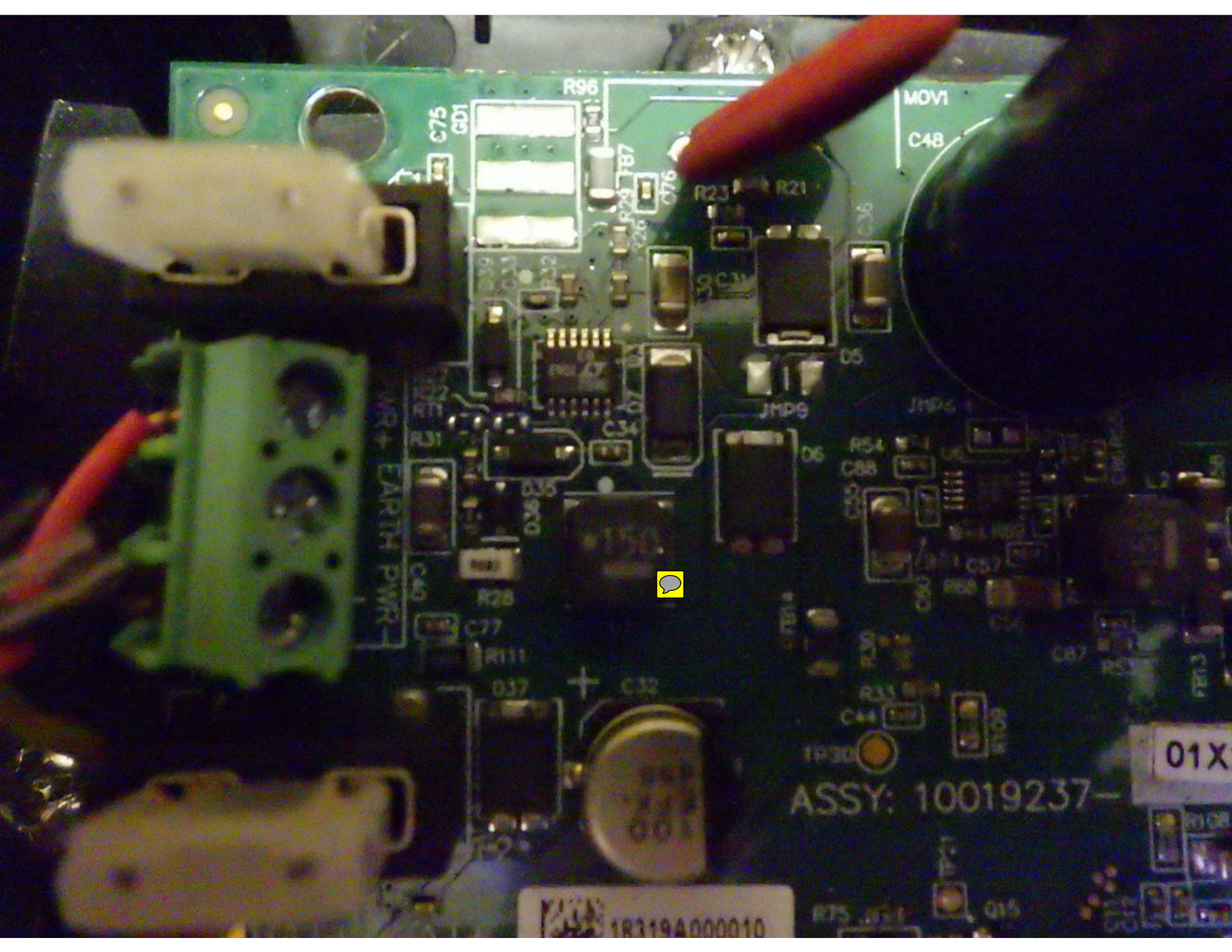


ASSY: 10019237-

01X22

18319A000010







CP 88 94V-0  
E243951  
KT 1842



01X22

220  
VFK  
077

220  
VFK  
077

CHARGE

TAG

RESET

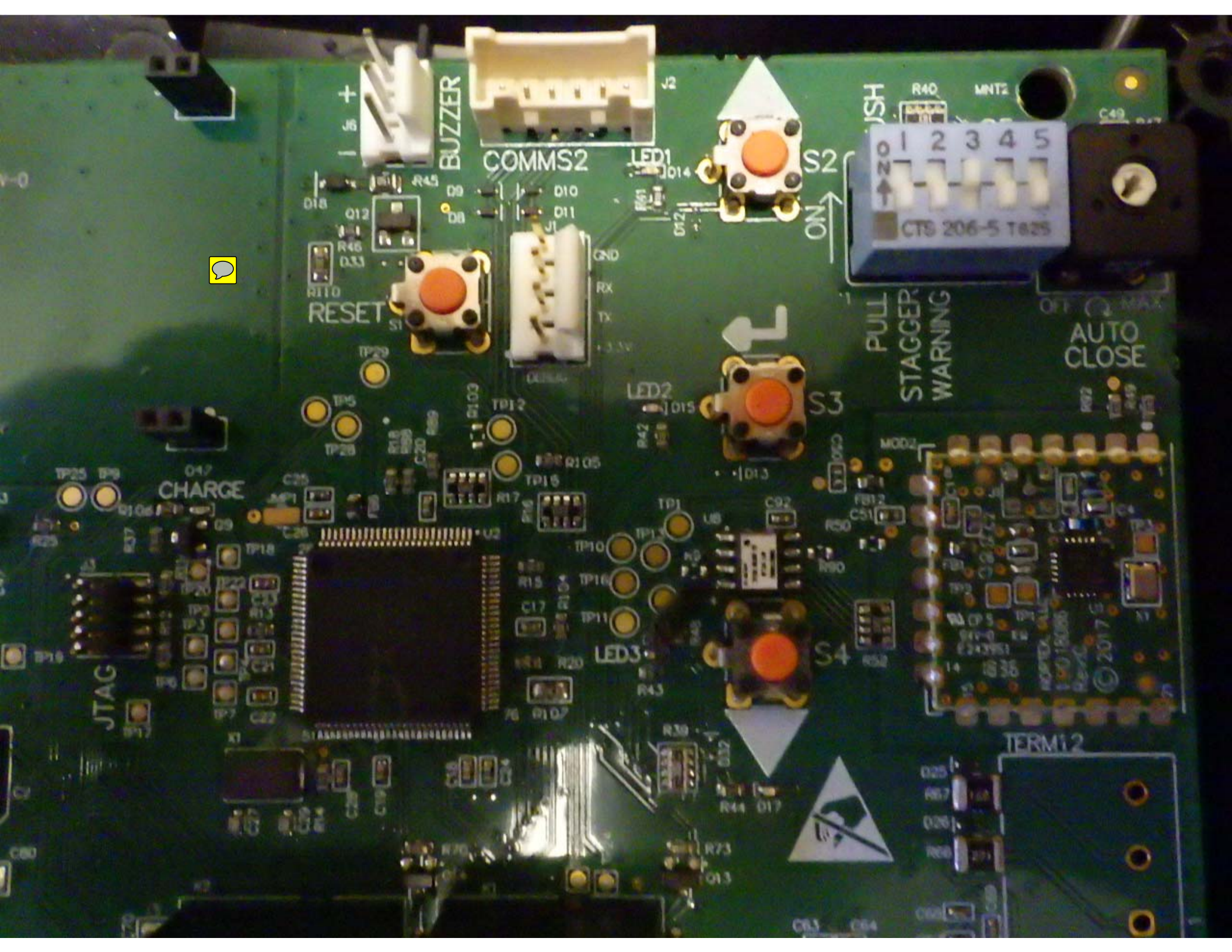
COMMS2

LED1

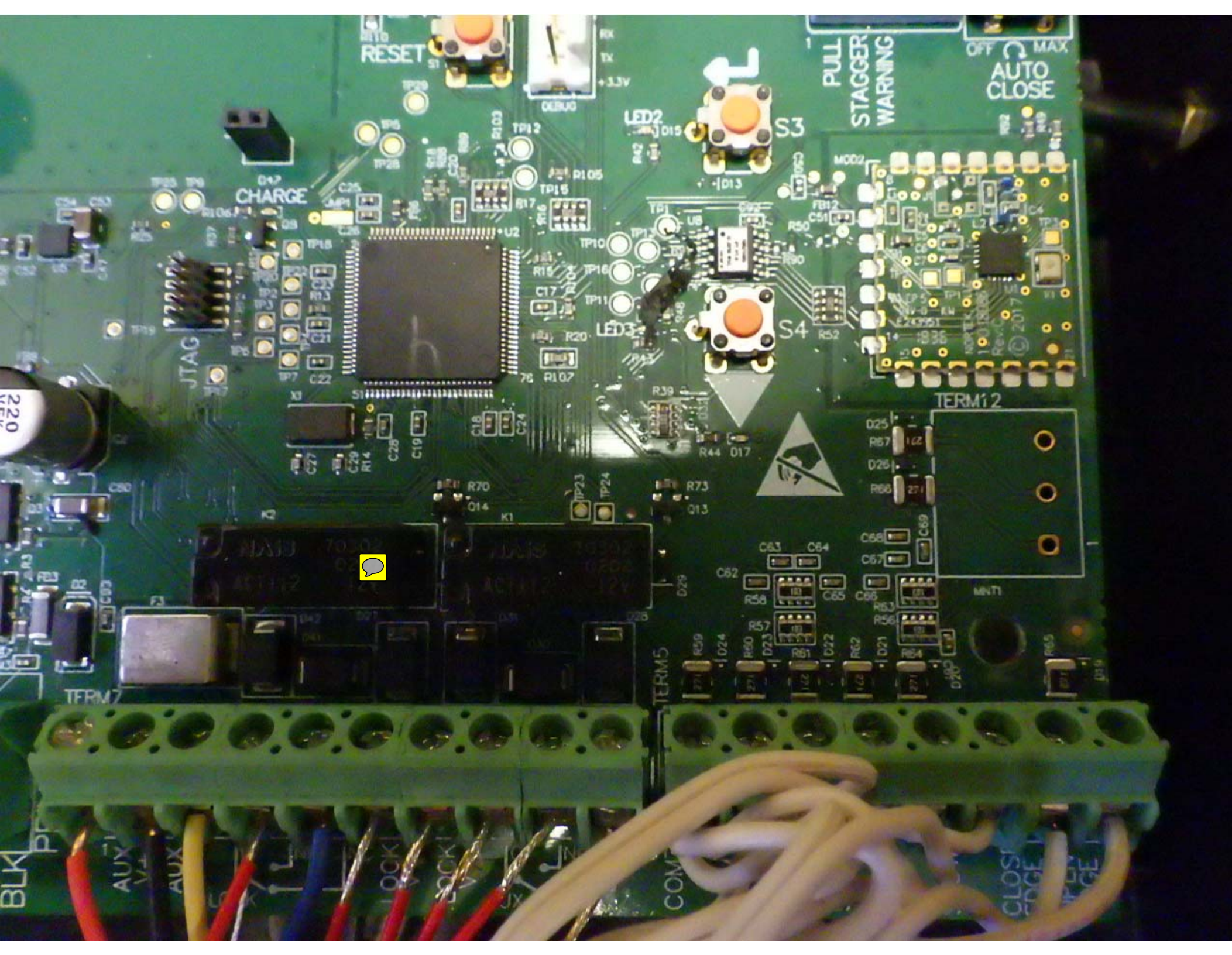
LED2

LED3

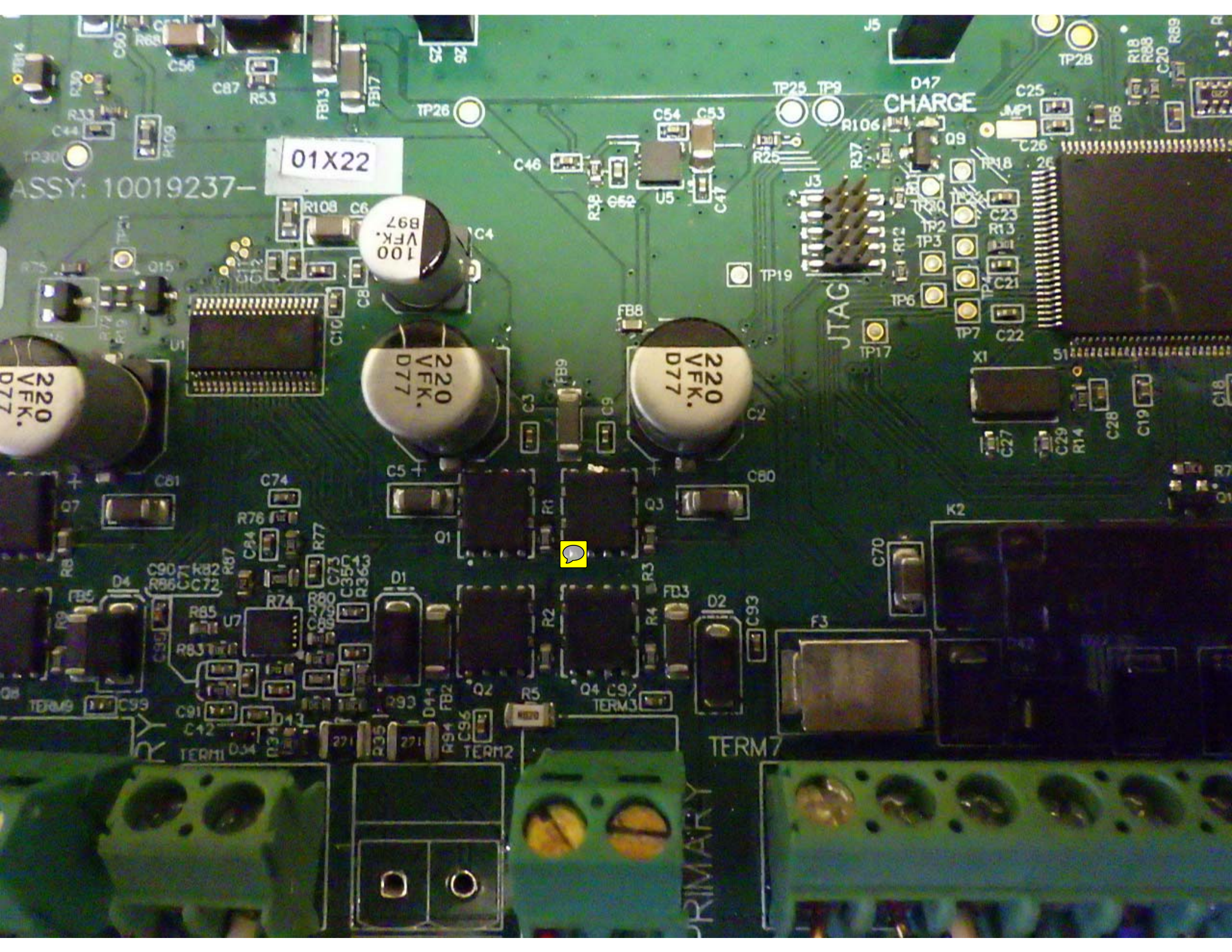












01X22

ASSY: 10019237-

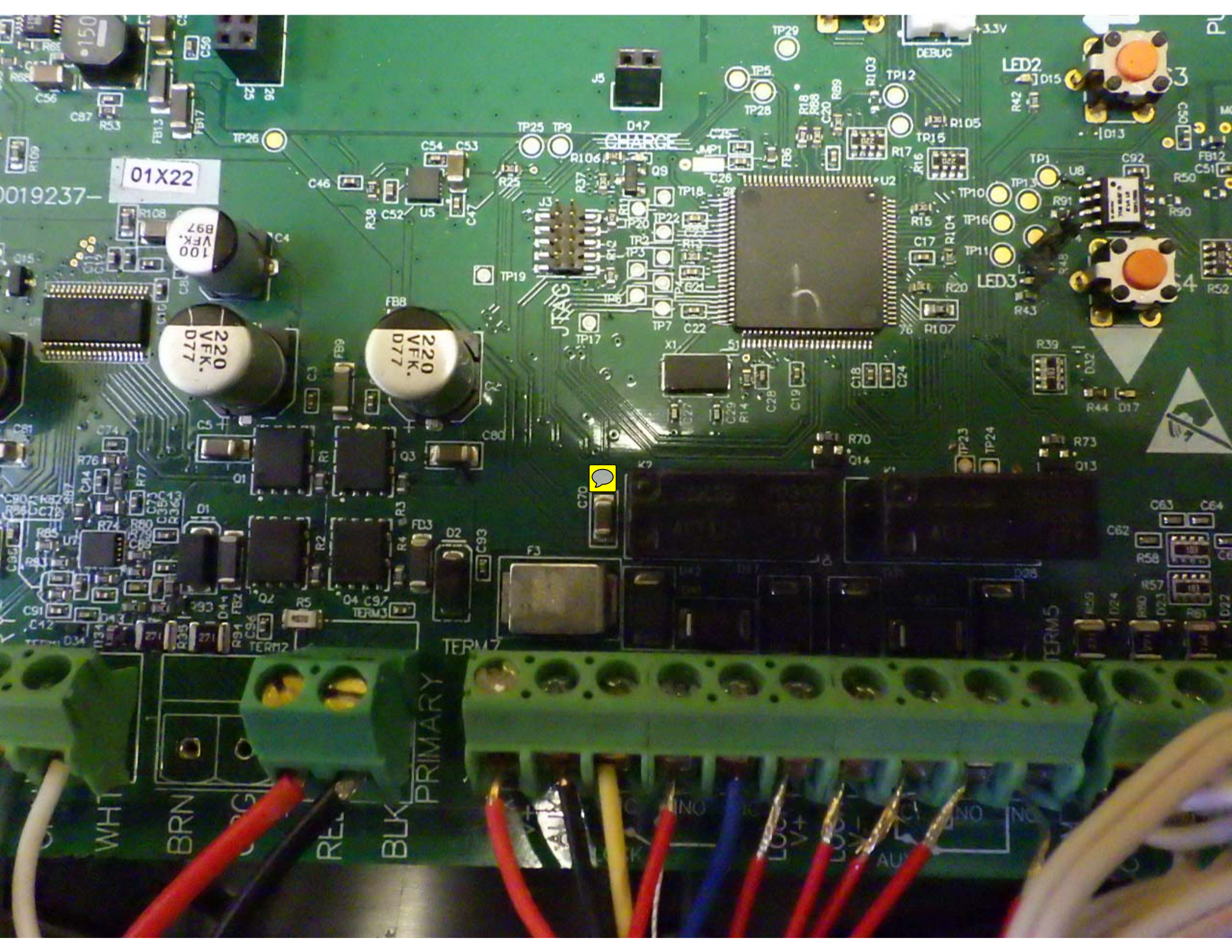
CHARGE

JTAG

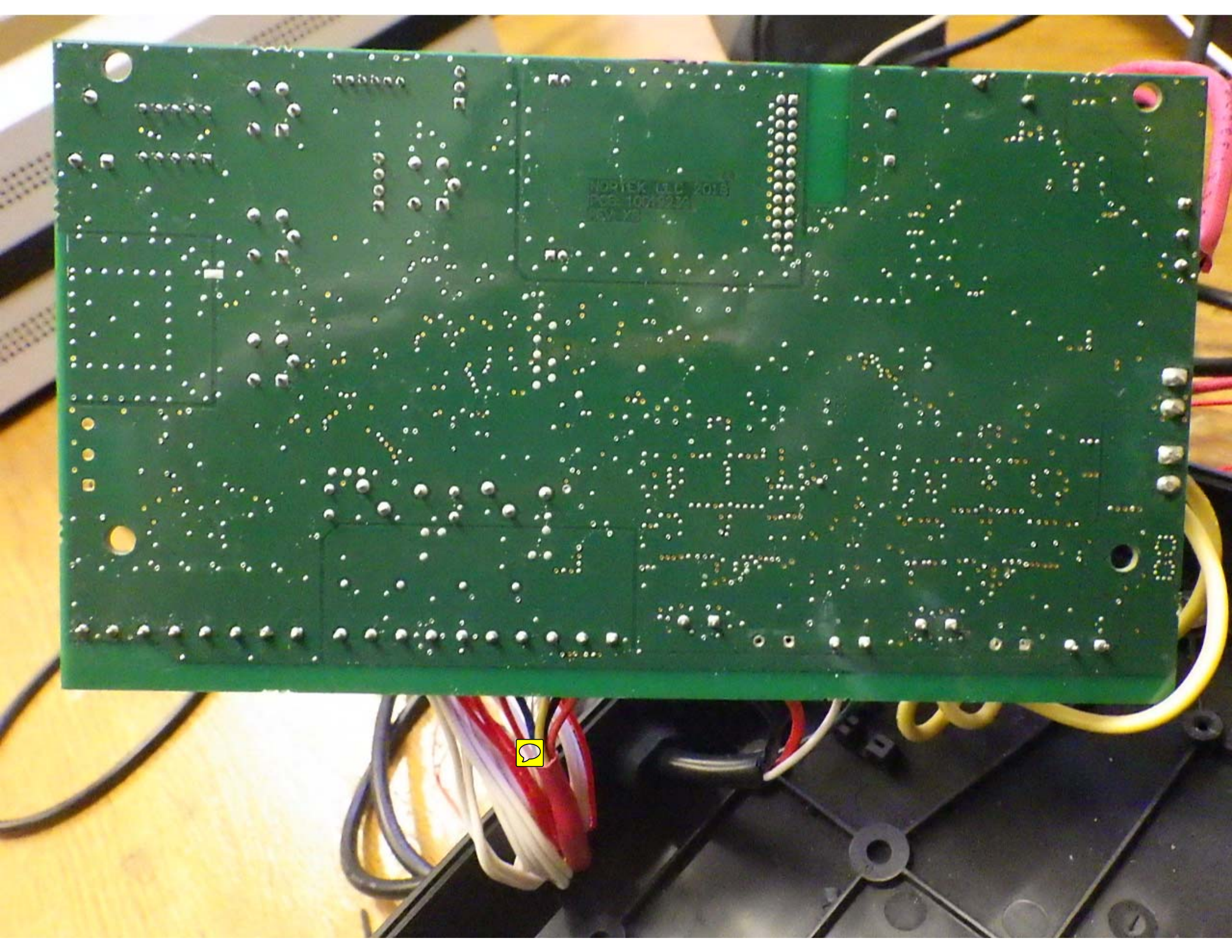
TERM7

PRIMARY





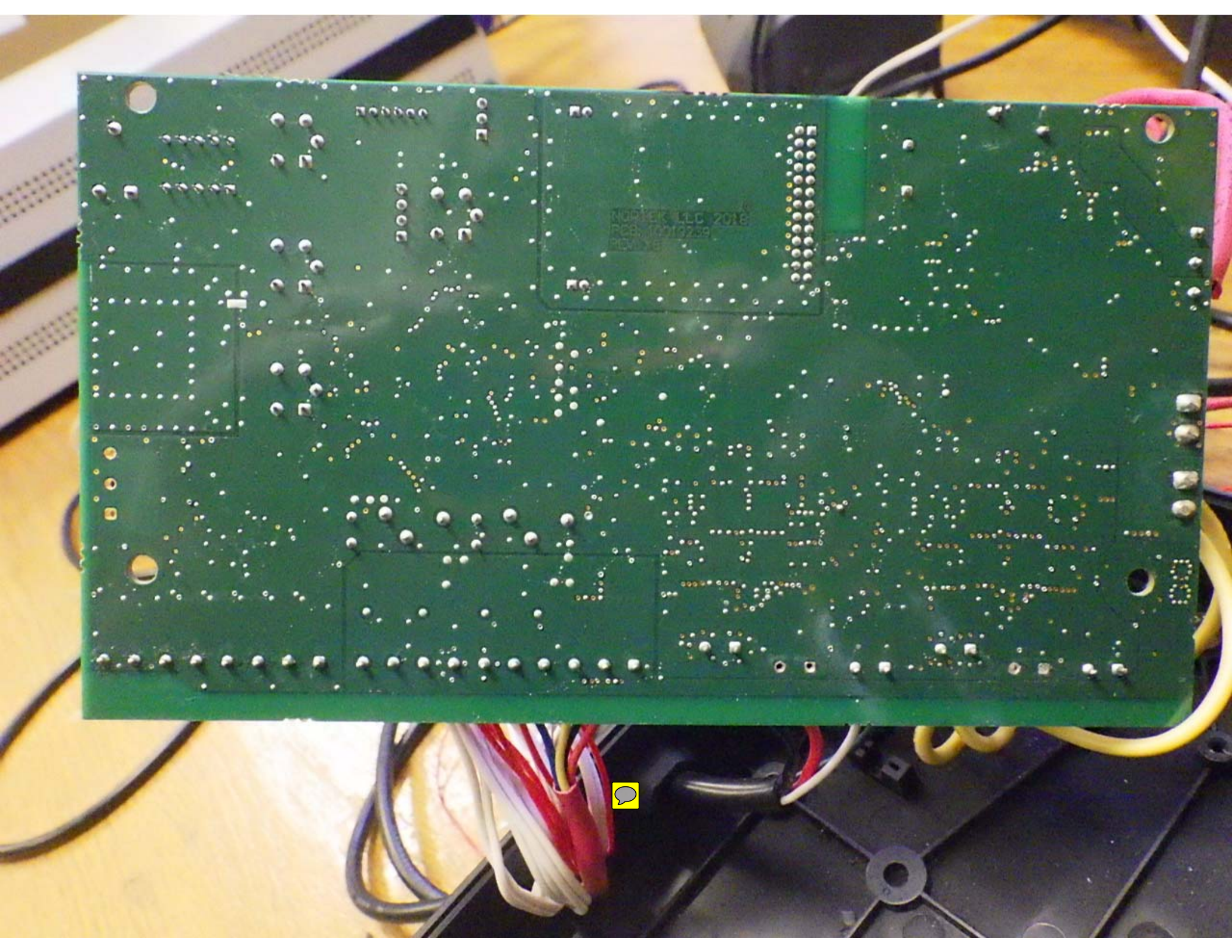




NORTEK LLC 2018  
PCB-1001234  
REV 1.0









**A DANGER/POISON**

 SHIELD EYES EYE/CLOTH CONTACT CAN CAUSE BLINDNESS OR BURNING	 NO - SPARKS - FLAMES - SMOKE	 SULFURIC ACID CAN CAUSE BURNING OR SEVERE BURNS	 FLUSH EYES WITH WATER GET MEDICAL HELP FAST
 KEEP OUT OF REACH OF CHILDREN	 READ MANUAL AND INSTRUCTIONS	DO NOT OPEN	

Distributed by: Lead Battery Corporation 15311 Descartes Road, Santa Clara, CA 95051 408-558-5833

**PROPOSITION 65 WARNING:**  
Battery posts, terminals, and related accessories contain lead and lead compounds, chemicals known to the State of California to cause cancer and reproductive harm. Batteries also contain other chemicals known to the State of California to cause cancer. Wash hands after handling.



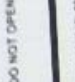
**WARNING:**  
Risk of fire, explosion or burns.  
Do not disassemble.  
Do not heat above 60°C or incinerate.  
Not recommended for inverted use.  
Follow product charging instructions.





# **! DANGER/POISON**

 SHIELD EYES EXPLOSIVE GASES CAN CAUSE BLINDNESS OR INJURY	 NO • SPARKS • FLAMES • SMOKING	 SULFURIC ACID CAN CAUSE BLINDNESS OR SEVERE BURNS	 FLUSH EYES IMMEDIATELY WITH WATER GET MEDICAL HELP FAST
---	--	---	--

 KEEP OUT OF THE REACH OF CHILDREN	 READ INSTRUCTIONS	 DO NOT OPEN
--	---	--

**PROPOSITION 65 WARNING:**  
Battery posts, terminals, and related accessories contain lead and lead compounds, chemicals known to the State of California to cause cancer and reproductive harm. Batteries also contain other chemicals known to the State of California to cause cancer. Wash hands after handling.

**WARNING:**  
Risk of fire, explosion or burns.  
Do not disassemble,  
heat above 60°C or incinerate.  
Not recommended for inverted use.  
Follow product charging instructions.

Distributed by: Leoch Battery Corporation 18751 Descartes Foothill Ranch, CA 92610 (949) 588-5953

10017434  
>ABS<





# ⚠ DANGER/POISON

 SHIELD EYES. EXPLOSIVE GASES CAN CAUSE BLINDNESS OR INJURY.	 NO • SPARKS • FLAMES • SMOKING	 SULFURIC ACID CAN CAUSE BLINDNESS OR SEVERE BURNS.	 FLUSH EYES IMMEDIATELY WITH WATER. GET MEDICAL HELP FAST.
---	---	--	--

 KEEP OUT OF THE REACH OF CHILDREN.	 READ INSTRUCTIONS.	 DO NOT OPEN.
---	--	---

**PROPOSITION 65 WARNING:**  
Battery posts, terminals, and related accessories contain lead and lead compounds, chemicals known to the State of California to cause cancer and reproductive harm. Batteries also contain other chemicals known to the State of California to cause cancer. Wash hands after handling.

**WARNING:**  
Risk of fire, explosion or burns.  
Do not disassemble.  
Heat above 60°C or incinerate.  
Not recommended for inverted use.  
Follow product charging instructions.

Distributed by: Leoch Battery Corporation 19151 Descartes Foothill Ranch, CA 92610 (540) 398-3863

10017434  
>ABS<





**A DANGER/POISON**

 DO NOT EXPOSE TO OPEN FLAME DO NOT RECHARGE OR DISCHARGE	 DO NOT EXPOSE TO OPEN FLAME DO NOT RECHARGE OR DISCHARGE	 DO NOT EXPOSE TO OPEN FLAME DO NOT RECHARGE OR DISCHARGE	 DO NOT EXPOSE TO OPEN FLAME DO NOT RECHARGE OR DISCHARGE
 DO NOT EXPOSE TO OPEN FLAME DO NOT RECHARGE OR DISCHARGE	 DO NOT EXPOSE TO OPEN FLAME DO NOT RECHARGE OR DISCHARGE	 DO NOT EXPOSE TO OPEN FLAME DO NOT RECHARGE OR DISCHARGE	 DO NOT EXPOSE TO OPEN FLAME DO NOT RECHARGE OR DISCHARGE

**PROPOSITION 65 WARNING:**  
Batteries, posts, terminals, and related accessories contain lead and lead compounds, chemicals known to the State of California to cause cancer and reproductive harm. Batteries also contain other chemicals known to the State of California to cause cancer. Wash hands after handling.

**WARNING:**  
Risk of fire, explosion or burns.  
Do not disassemble.  
Heat above 60°C or incorporate.  
Not recommended for inverted use.  
Follow product charging instructions.





# A DANGER/POISON

			
SHIELD EYES. EVEN GASES CAN CAUSE BLINDNESS OR INJURY.	NO - SPARKS - FLAMES - SMOKE	SULFURIC ACID CAN CAUSE OR EXACERBATE BURNING.	FLUSH EYES IMMEDIATELY WITH WATER. GET MEDICAL HELP FAST.
			
KEEP OUT OF THE REACH OF CHILDREN.	READ INSTRUCTIONS.		DO NOT OPEN.

Designed by Lead Battery Corporation 11511 Descartes Forest Ranch, CA 95810 (949) 588-5853

## PROPOSITION 65 WARNING:

Battery posts, terminals, and related accessories contain lead and lead compounds, chemicals known to the State of California to cause cancer and reproductive harm. Batteries also contain other chemicals known to the State of California to cause cancer. Wash hands after handling.

## WARNING:

Risk of fire, explosion or burns. Do not disassemble.

Do not heat above 60°C or incinerate.







Not recommended for inverted use.

Follow product charging instructions.





# **▲ DANGER/POISON**

 SHIELD EYES. EXPLOSIVE GASES CAN CAUSE BLINDNESS OR INJURY	 NO • SPARKS • FLAMES • SMOKING	 SULFURIC ACID CAN CAUSE BLINDNESS OR SEVERE BURNS	 FLUSH EYES IMMEDIATELY WITH WATER. GET MEDICAL HELP FAST
 KEEP OUT OF THE REACH OF CHILDREN	 READ INSTRUCTIONS	DO NOT OPEN	

Distributed by: Larch Battery Corporation 19751 Descartes Foodmill Ranch, CA 92510 (949) 588-5853

## **PROPOSITION 65 WARNING:**

Battery posts, terminals, and related accessories contain lead and lead compounds, chemicals known to the State of California to cause cancer and a reproductive harm. Batteries also contain other chemicals known to the State of California to cause cancer. Wash hands after handling.

## **WARNING:**

Risk of fire, explosion or burns. Do not disassemble, heat above 60°C or incinerate. Not recommended for inverted use. Follow product charging instructions.





Hr 512  
LMA  
Spott



Host  
LNA  
Spdt





Spot

L1A/A

Hrs 5/12





Spot

1A/A

11/5/22



FCC ID: 16H-MMS915

IC: 21449-MMS915

This device complies with FCC rules Part 15. Operation is subject to the following two conditions: (1) This device may not cause harmful interference and (2) this device must accept any interference received, including interference that may cause undesired operation.

HVIN: 10018111

GTO ACCESS SYSTEMS, LLC

DIGITAL TRANSMITTER

MODEL: MMS915 FREQ: 915 MHz

MADE IN CHINA

10018603A

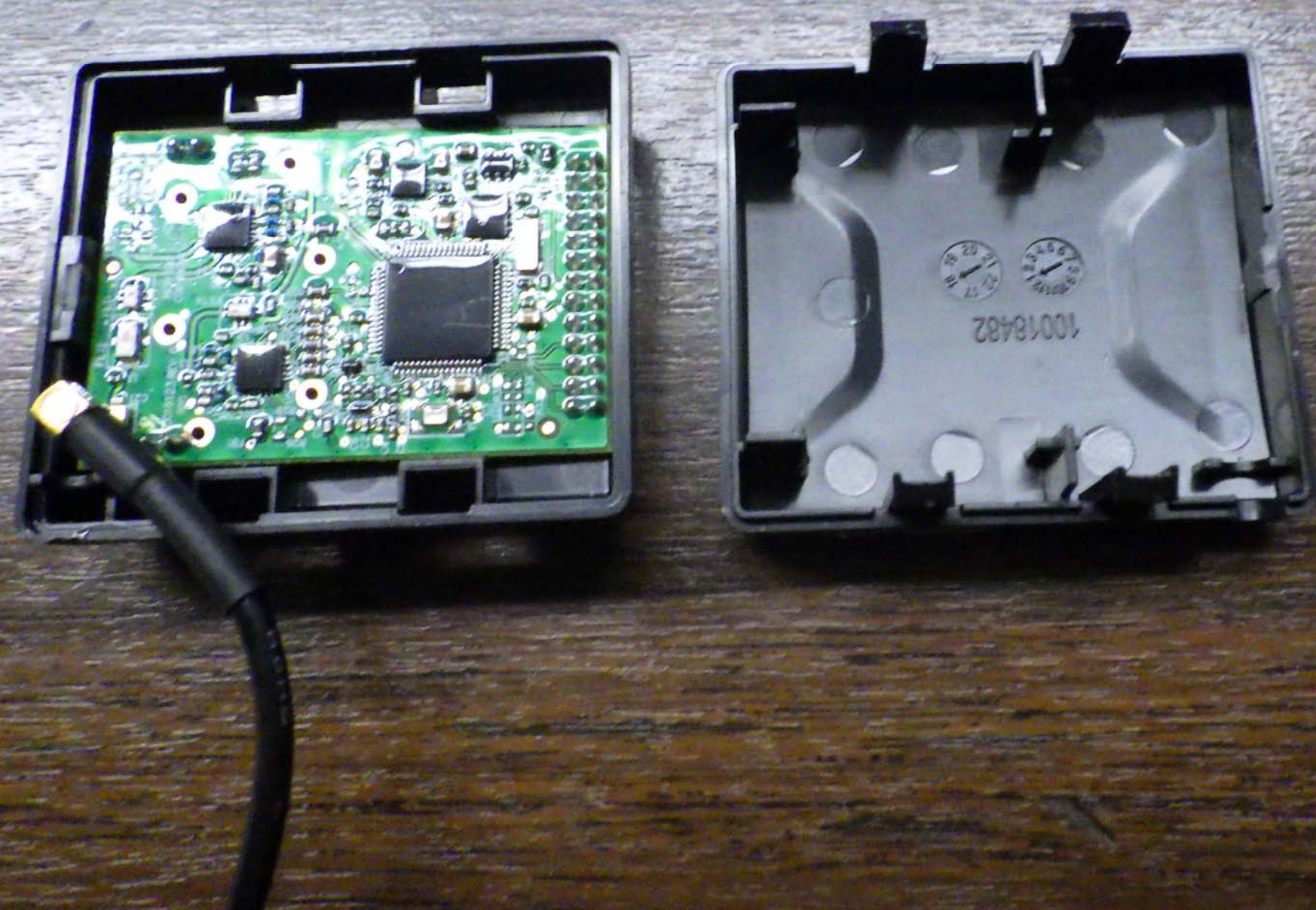


Apr 5/2

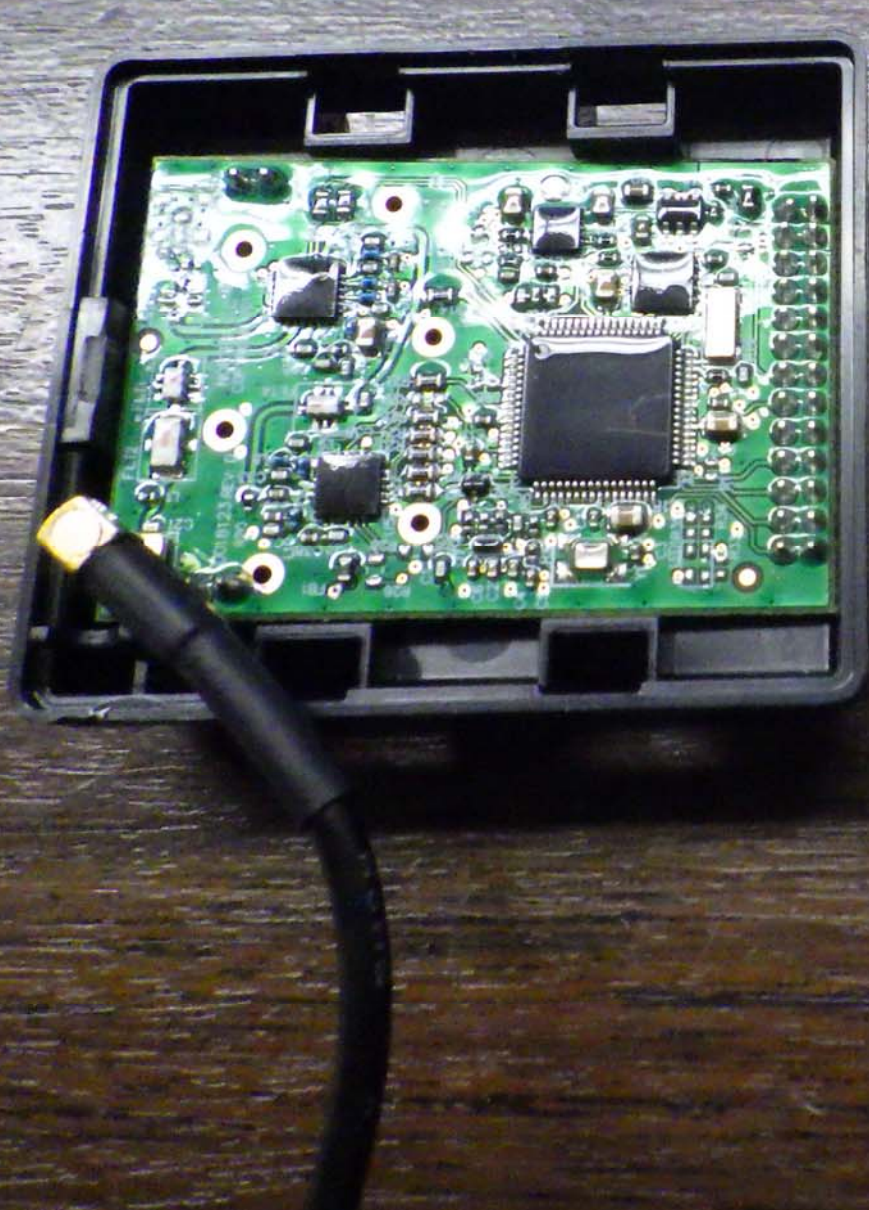
LMA

Spott





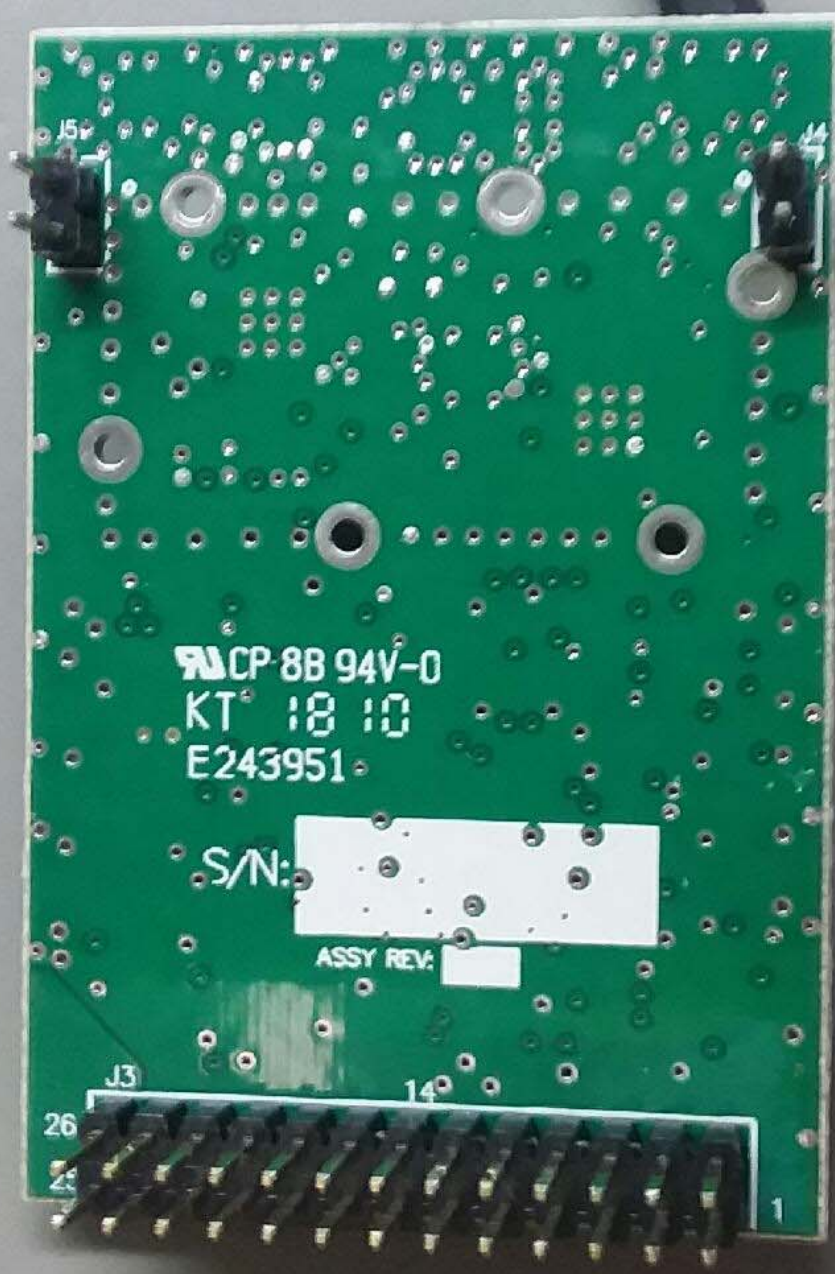












CP-8B 94V-0  
KT 18 10  
E243951

S/N:



ASSY REV:

