

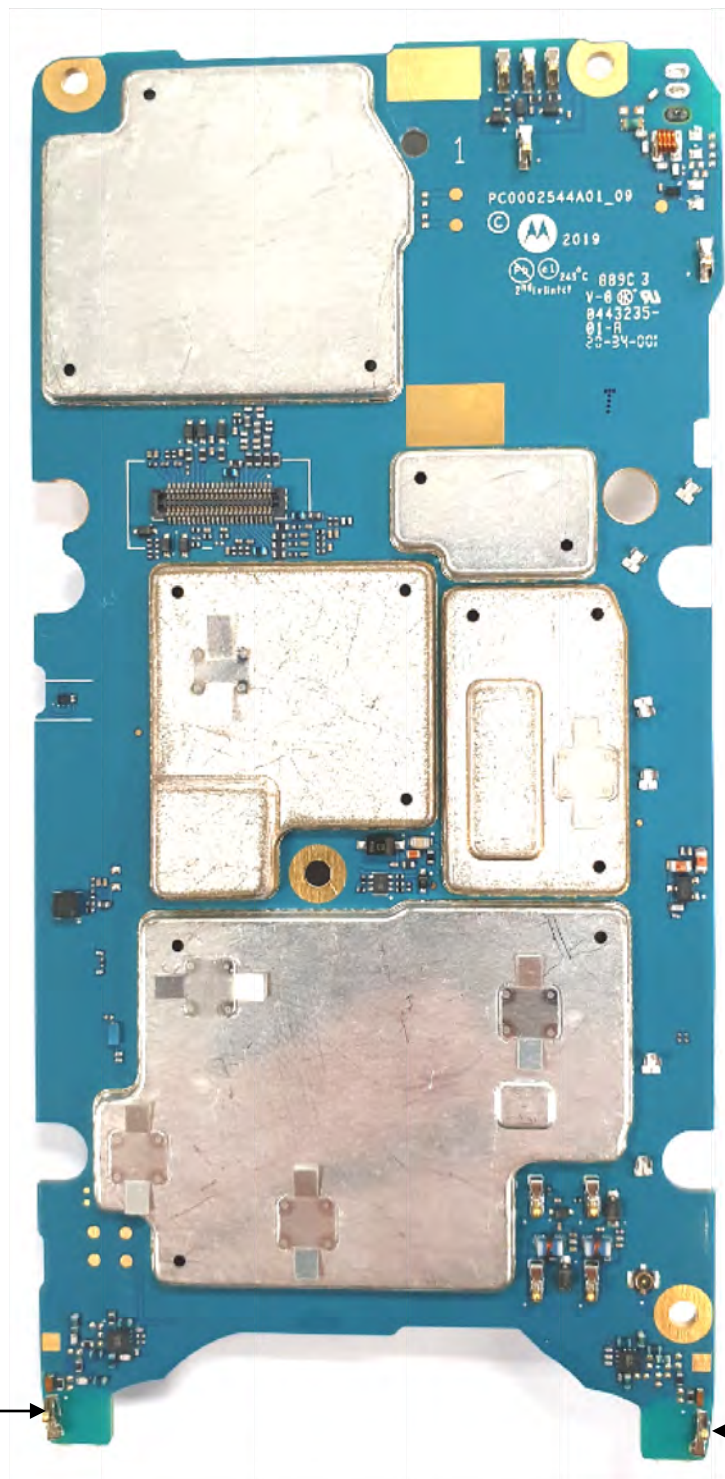
EXHIBIT 9**Internal Photographs**

(Pursuant to FCC Part 2.1033(b)(7), 2.1033(c)(12) and RSP 100 Annex C)

The following photographs are attached.

Exhibit

- | | |
|--|----|
| 1. LMR RF board <u>with</u> Shields (Top) | 9A |
| 2. LTE RF board <u>with</u> Shields (Top) | 9B |
| 3. AP board <u>with</u> Shields (Top) | 9C |
| 4. LMR RF board <u>without</u> Shields (Top) | 9D |
| 5. LTE RF board <u>without</u> Shields (Top) | 9E |
| 6. AP board <u>without</u> Shields (Top) | 9F |
| 7. LMR RF board <u>with</u> Shields (Bottom) | 9G |
| 8. LTE RF board <u>with</u> Shields (Bottom) | 9H |
| 9. AP board <u>with</u> Shields (Bottom) | 9I |
| 10. LMR RF board <u>without</u> Shields (Bottom) | 9J |
| 11. LTE RF board <u>without</u> Shields (Bottom) | 9K |
| 12. AP board <u>without</u> Shields (Bottom) | 9L |
| 13. RF boards <u>with</u> chassis and housing for (Front Side) | 9M |
| 14. Chassis and housing (Back Side) | 9N |
| 15. Exploded View of Radio | 9O |



LB and B48
Diversity Antenna

HB Diversity
Antenna

Exhibit 9A: LMR RF board with Shields (Top)

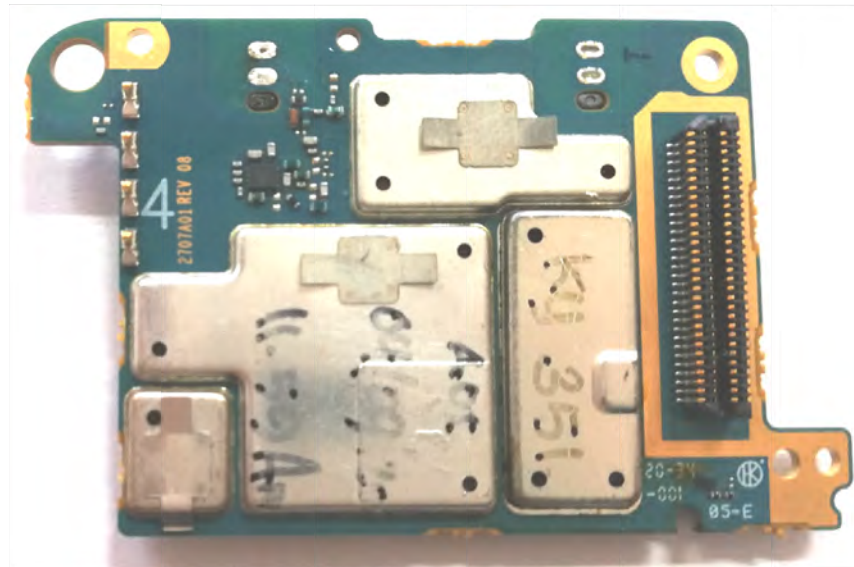


Exhibit 9B: LTE RF board with Shields (Top)

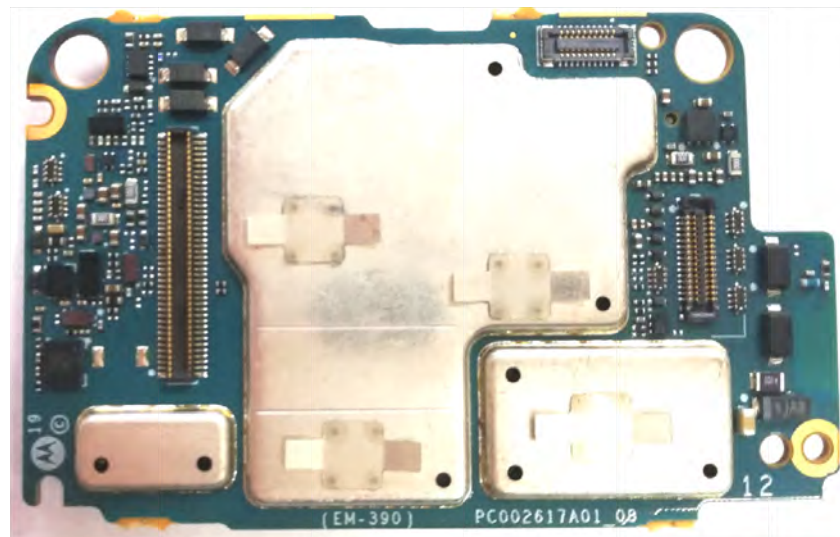
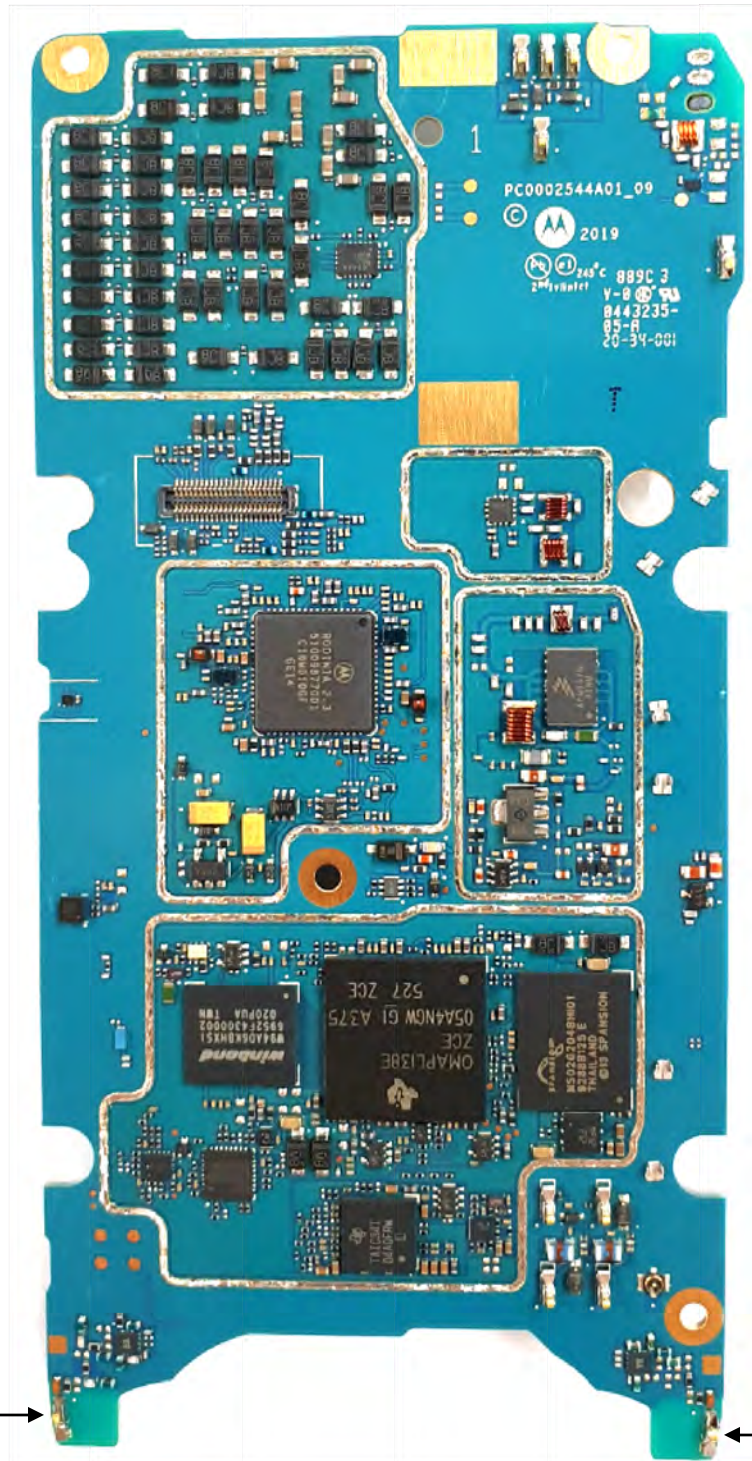


Exhibit 9C: AP board with Shields (Top)



LB and B48
Diversity Antenna

HB Diversity
Antenna

Exhibit 9D: LMR RF board without Shields (Top)

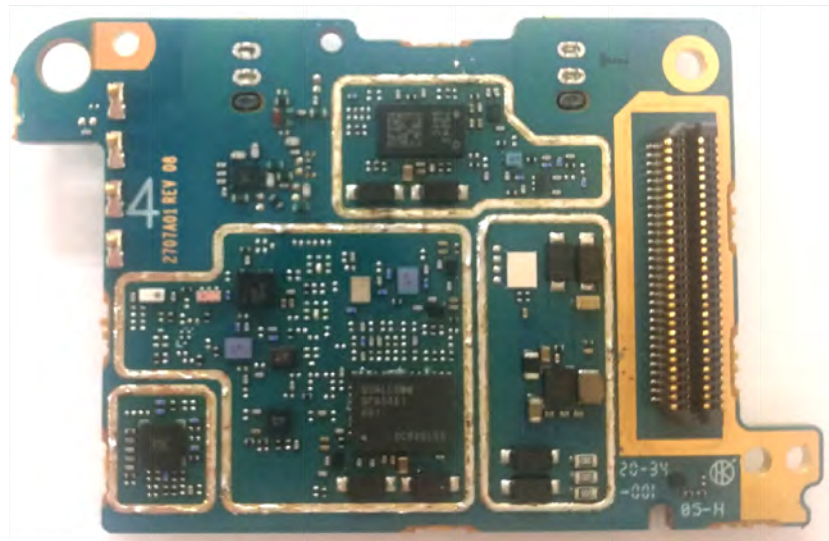


Exhibit 9E: LTE RF board without Shields (Top)

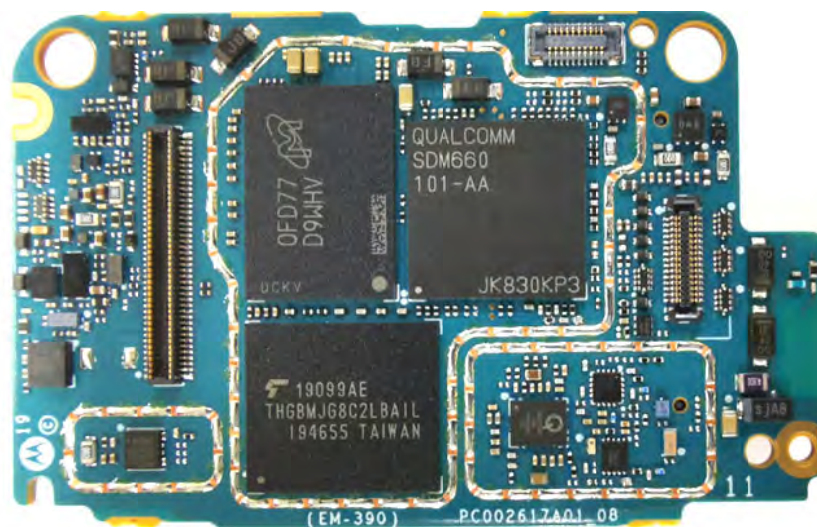


Exhibit 9F: AP board without Shields (Top)

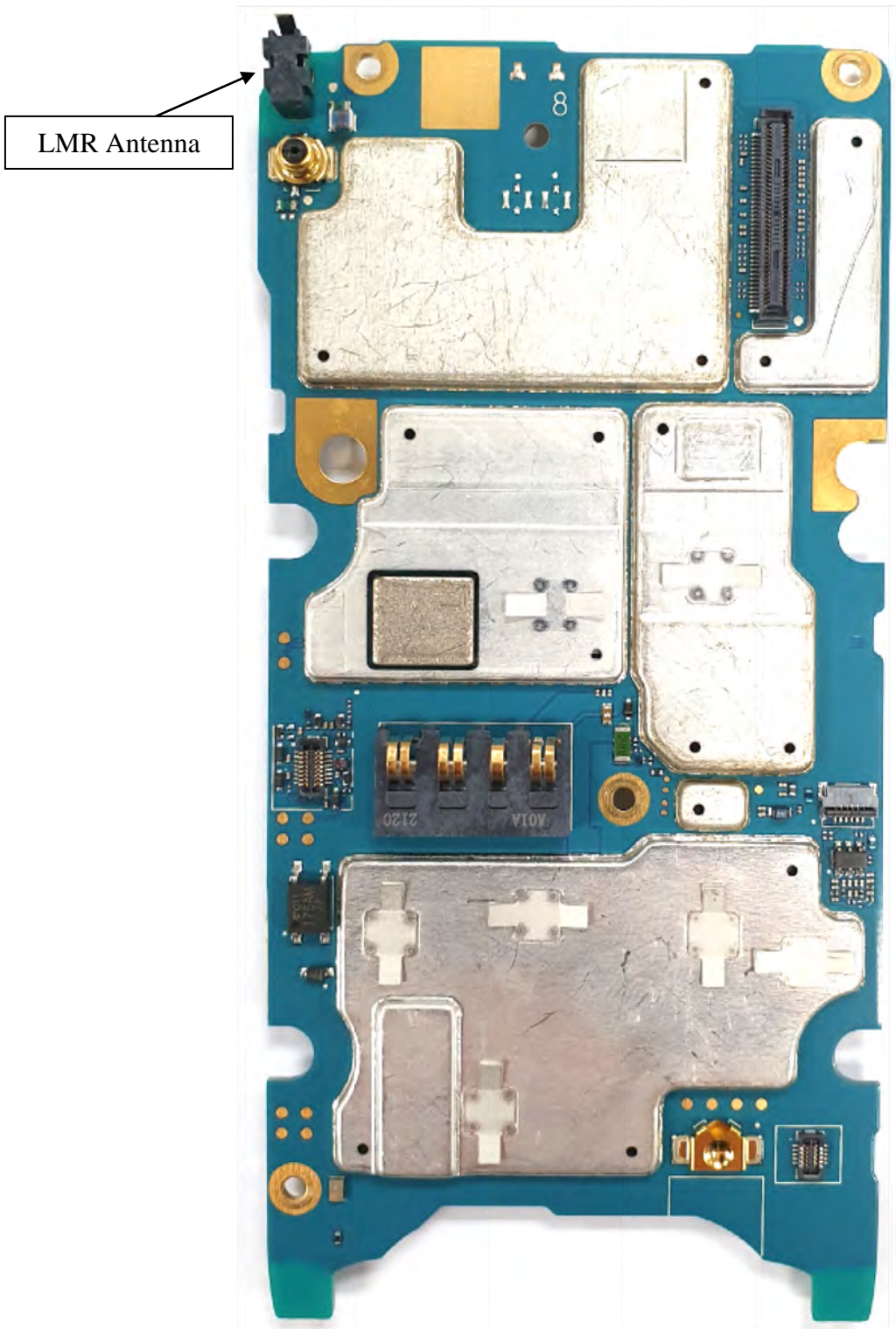


Exhibit 9G: LMR RF board with Shields (Bottom)

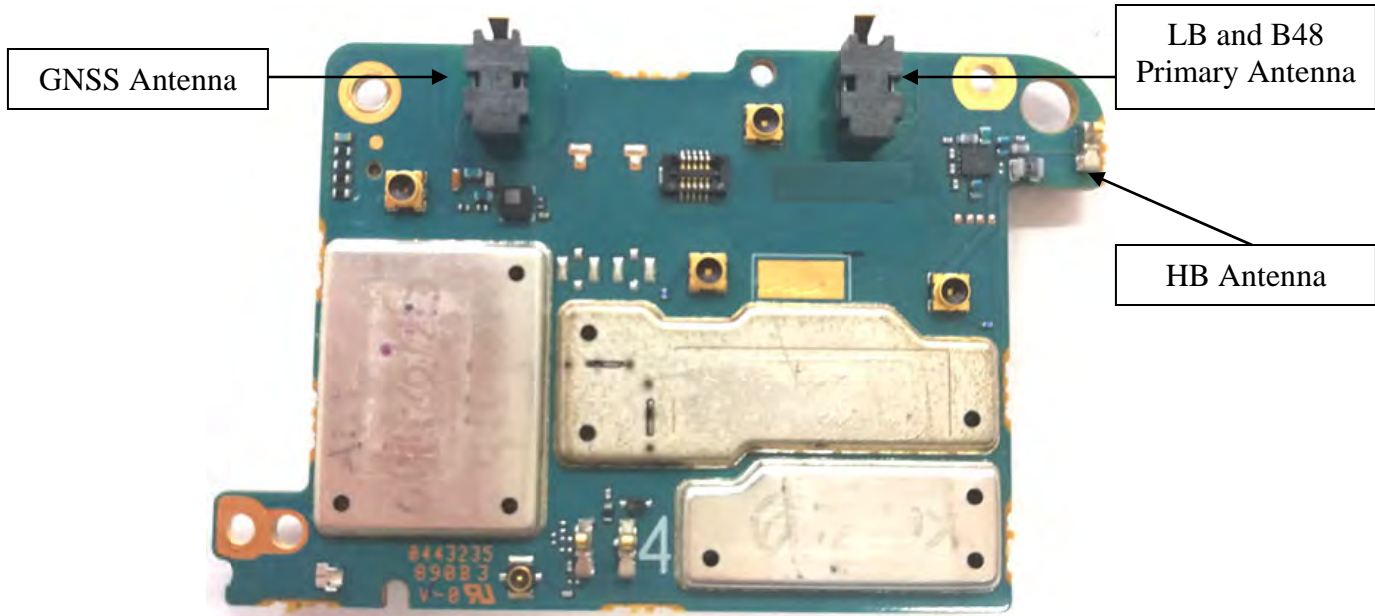


Exhibit 9H: LTE RF board with Shields (Bottom)

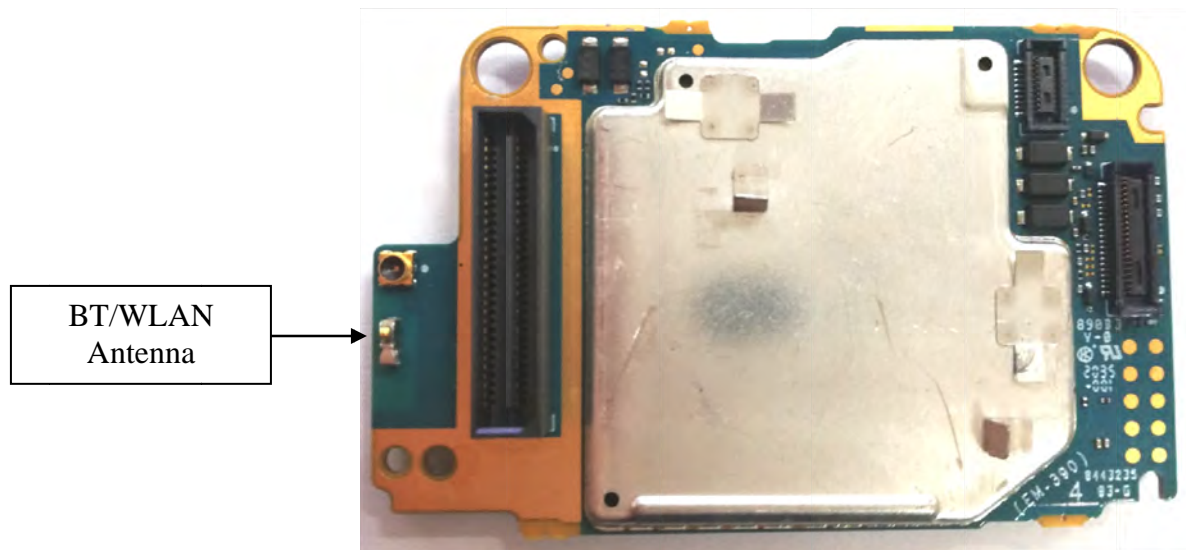


Exhibit 9I: AP board with Shields (Bottom)

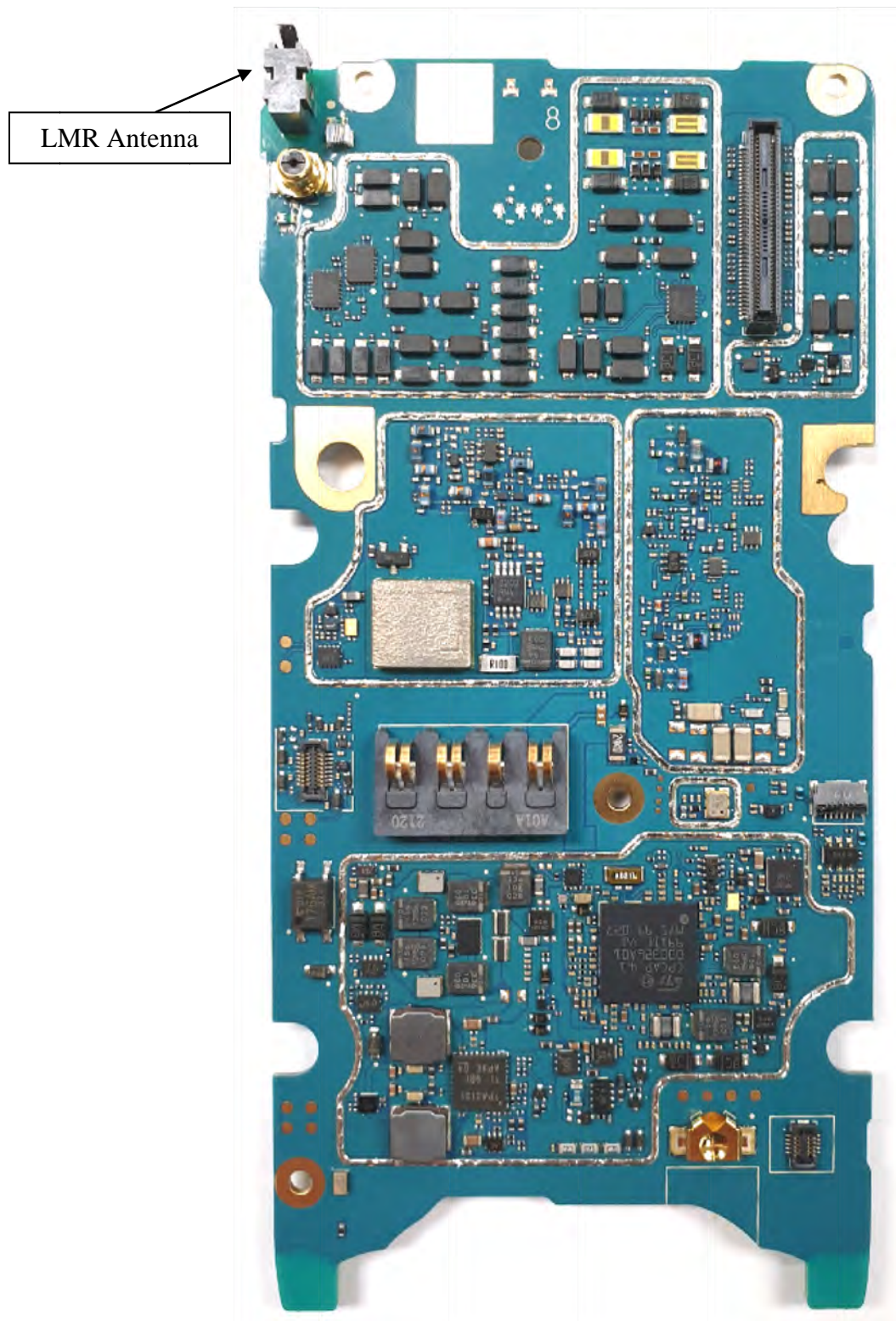


Exhibit 9J: LMR RF board without Shields (Bottom)

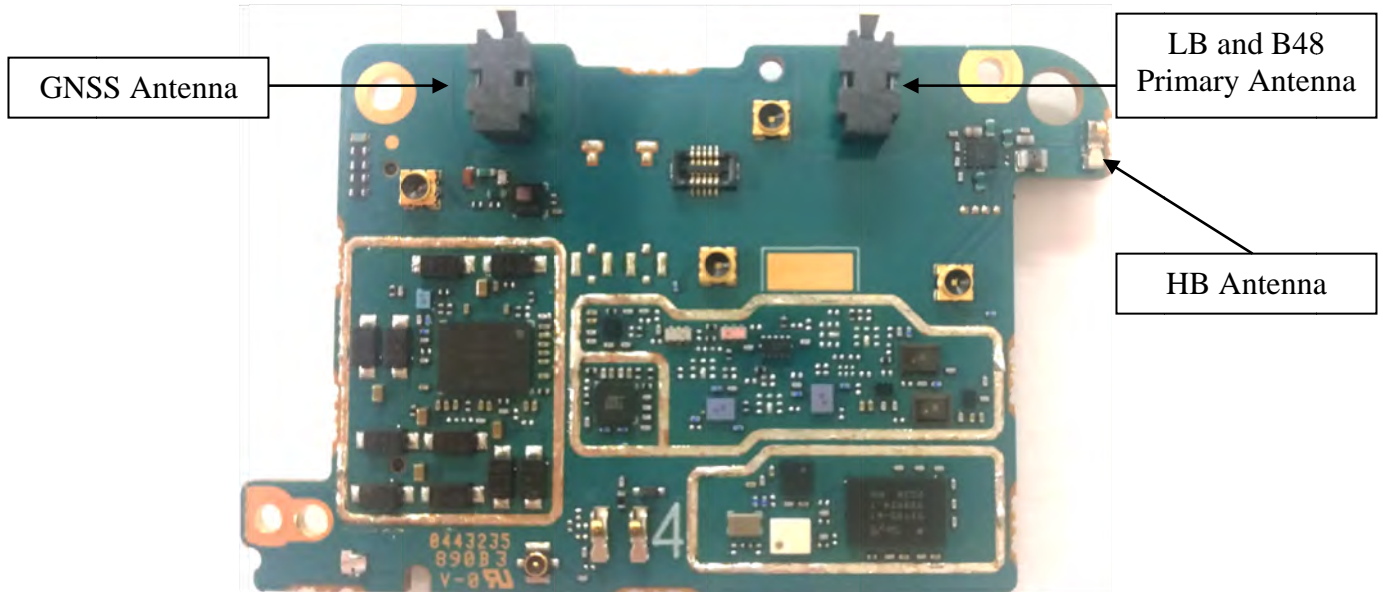


Exhibit 9K: LTE RF board without Shields (Bottom)

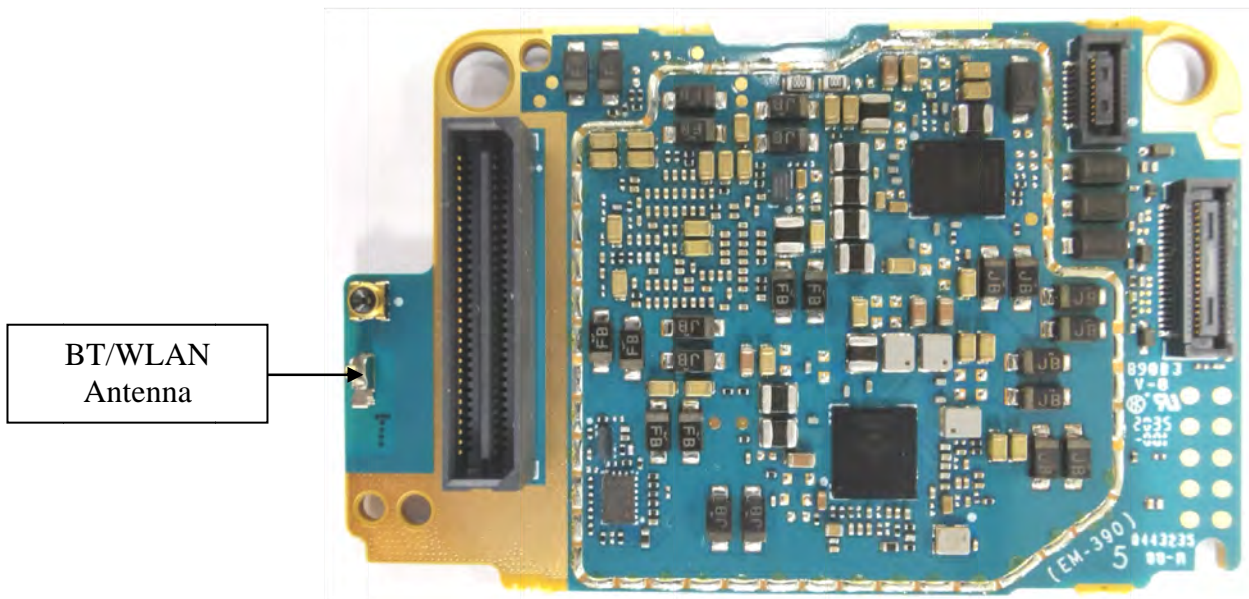


Exhibit 9L: AP board without Shields (Bottom)



Exhibit 9M: RF boards with chassis and housing for (Front Side)

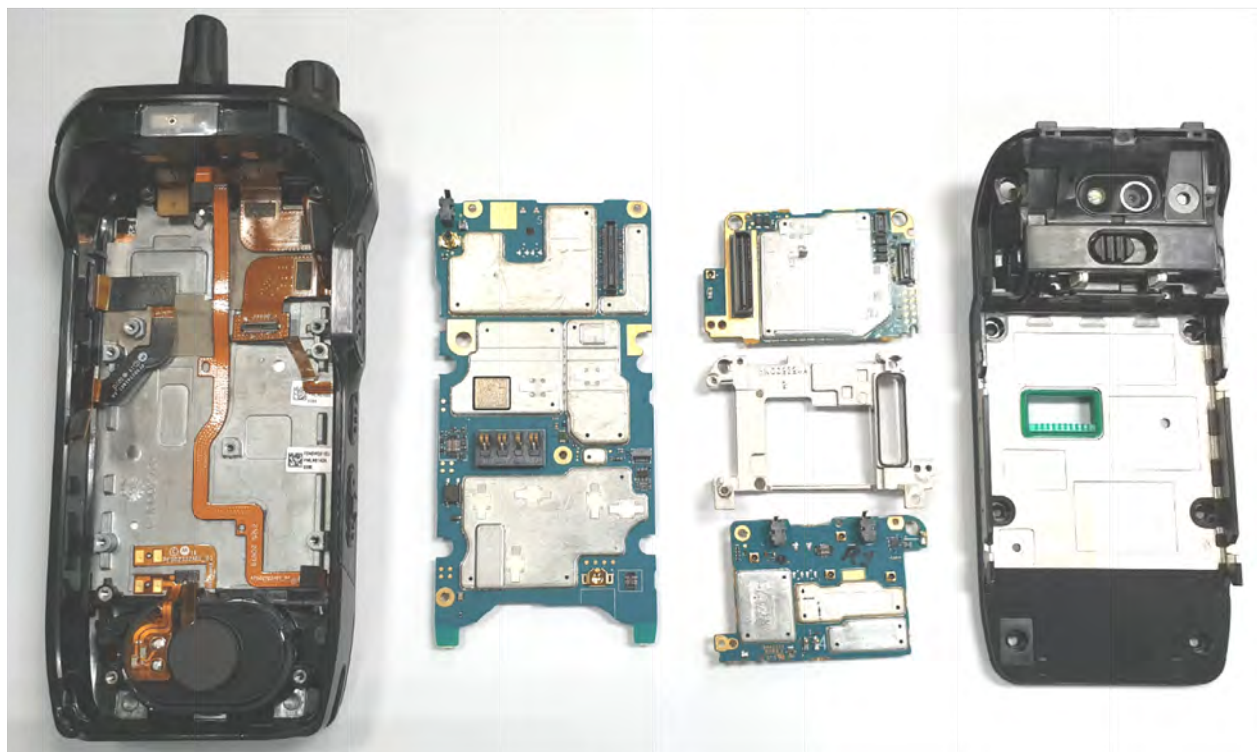


Exhibit 9N: Chassis and housing (Back Side)

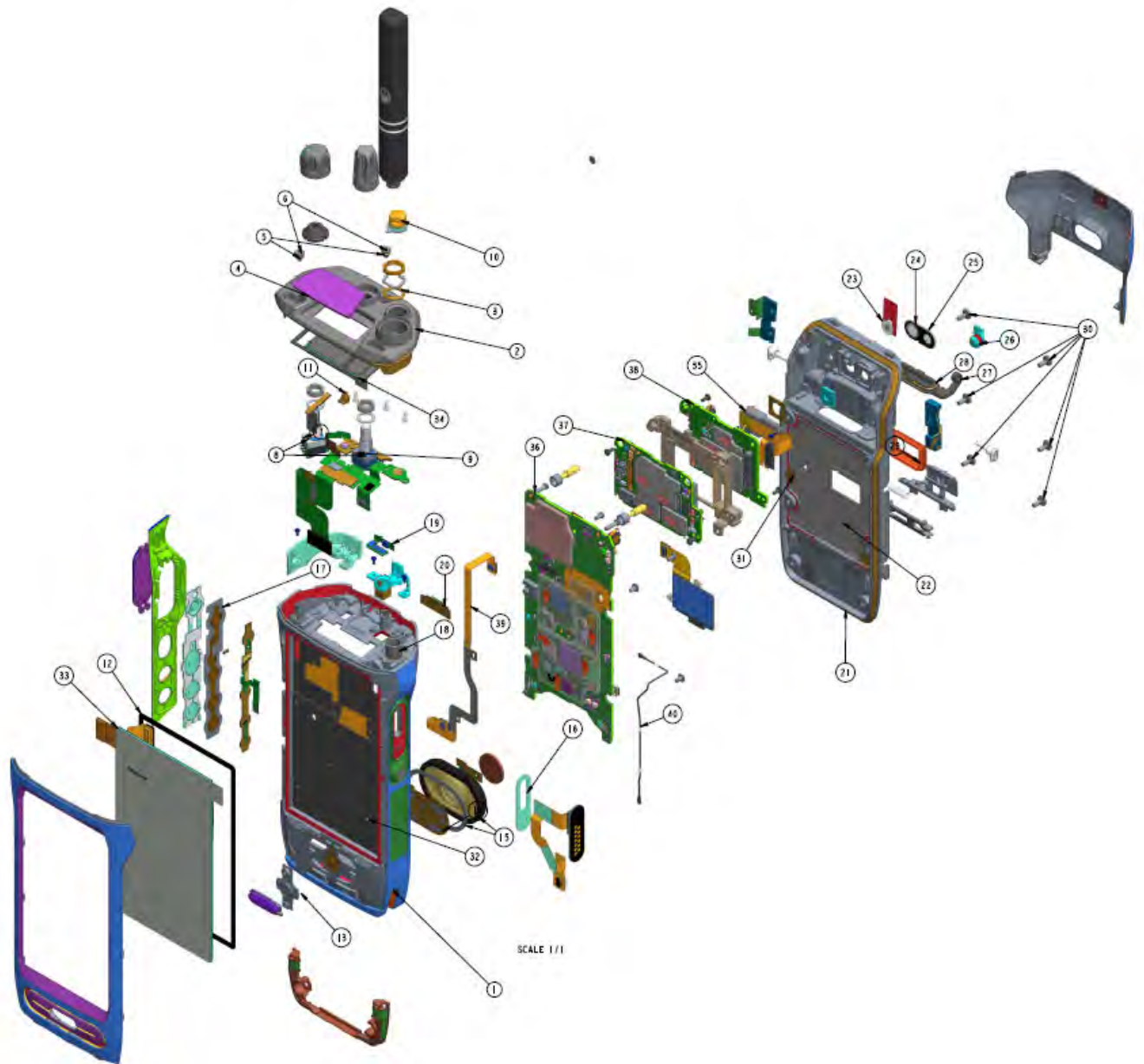


Exhibit 90: Exploded View of Radio

***** END *****