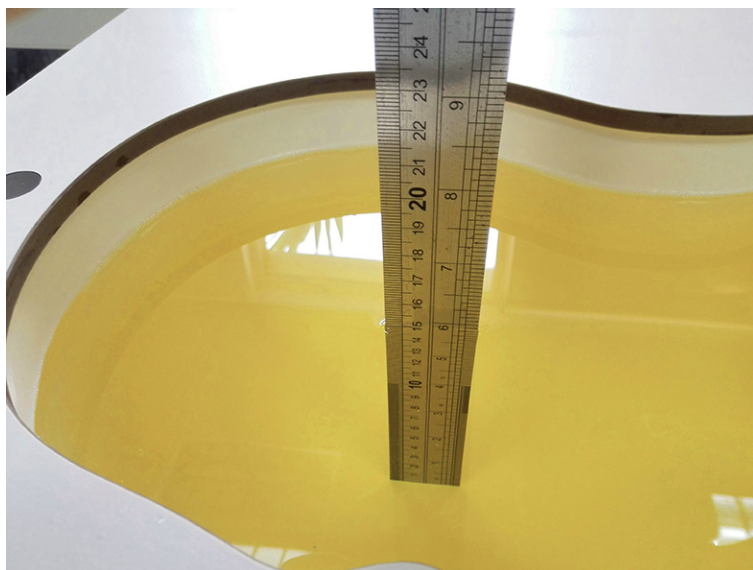
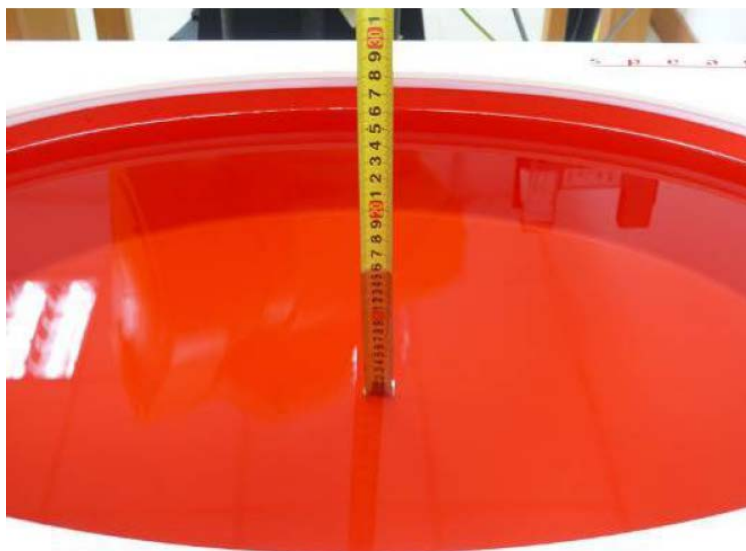


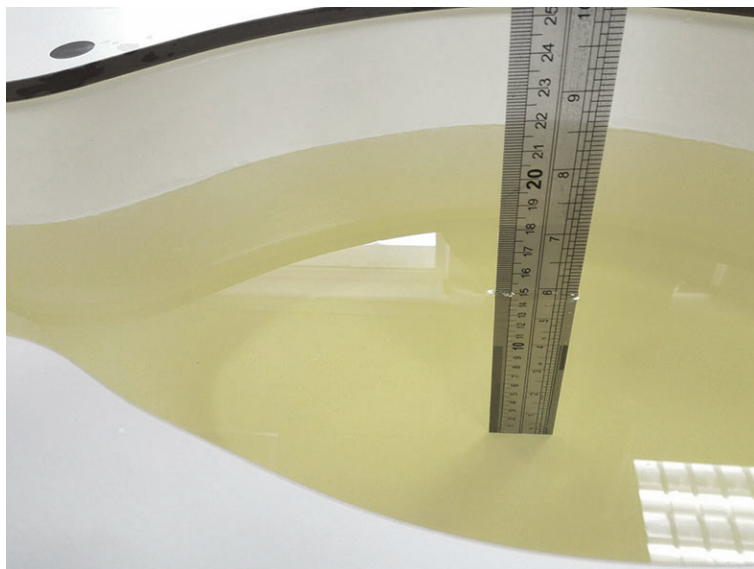
1. TEST SETUP PHOTOS



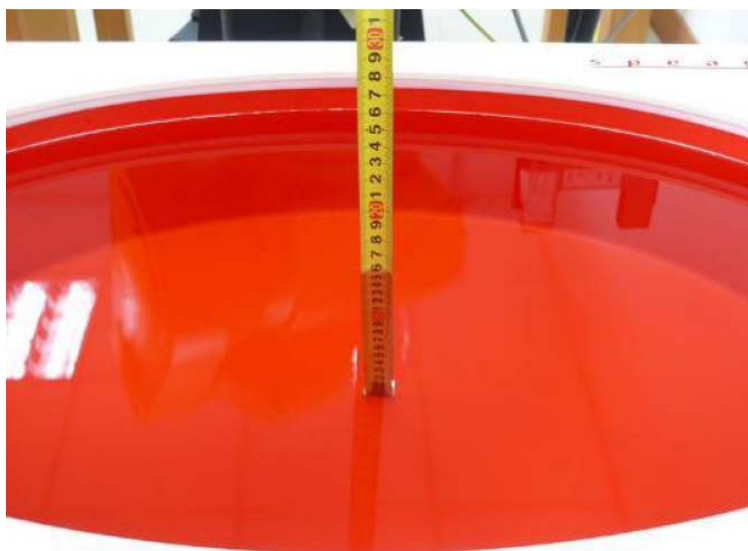
Photograph of the depth in the Head Phantom (835MHz, 15.2cm depth)



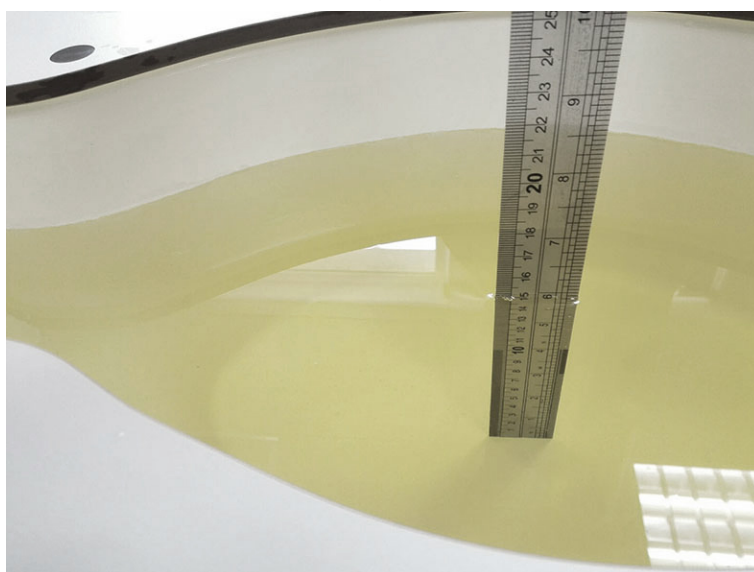
Photograph of the depth in the Body Phantom (835MHz, 15.3cm depth)



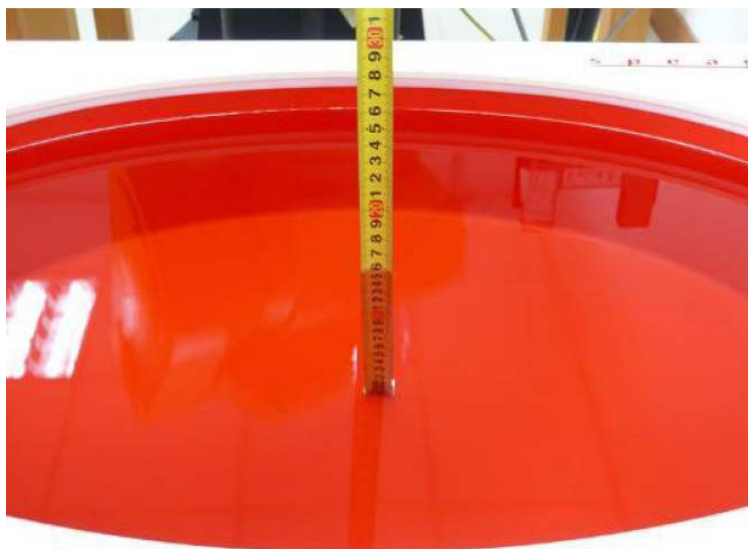
Photograph of the depth in the Head Phantom (1900MHz, 15.1cm depth)



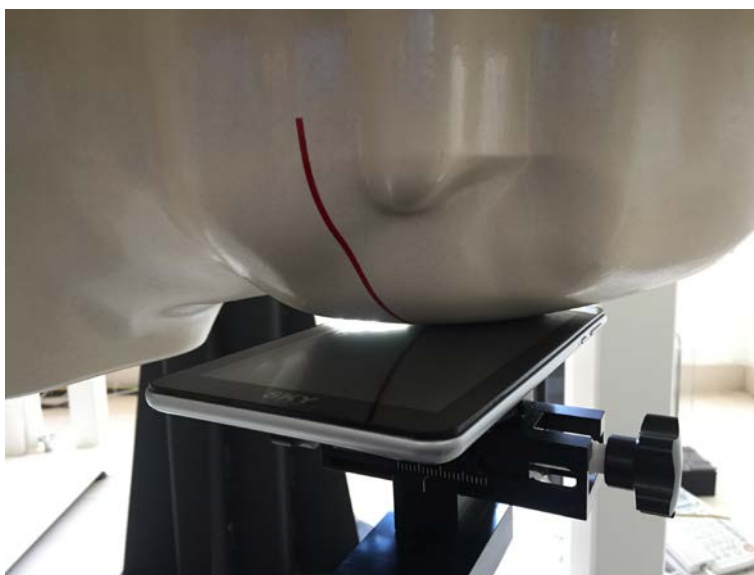
Photograph of the depth in the Body Phantom (1900MHz, 15.3cm depth)



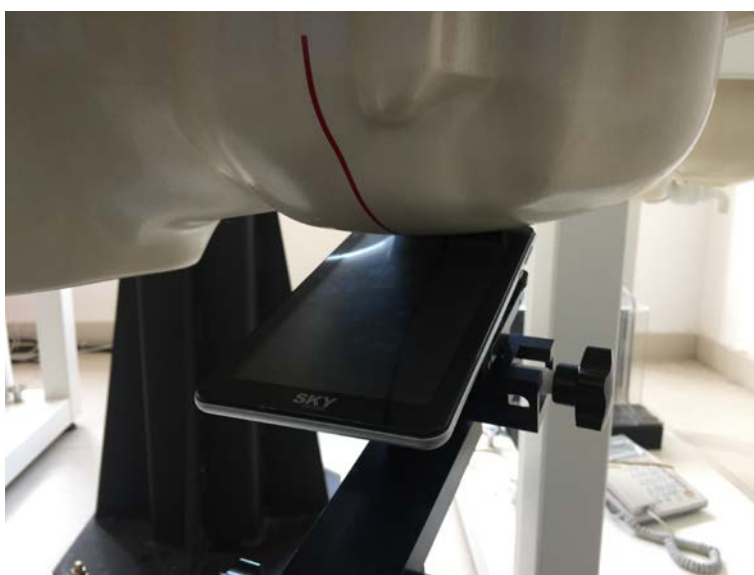
Photograph of the depth in the Head Phantom (2450MHz, 15.2cm depth)



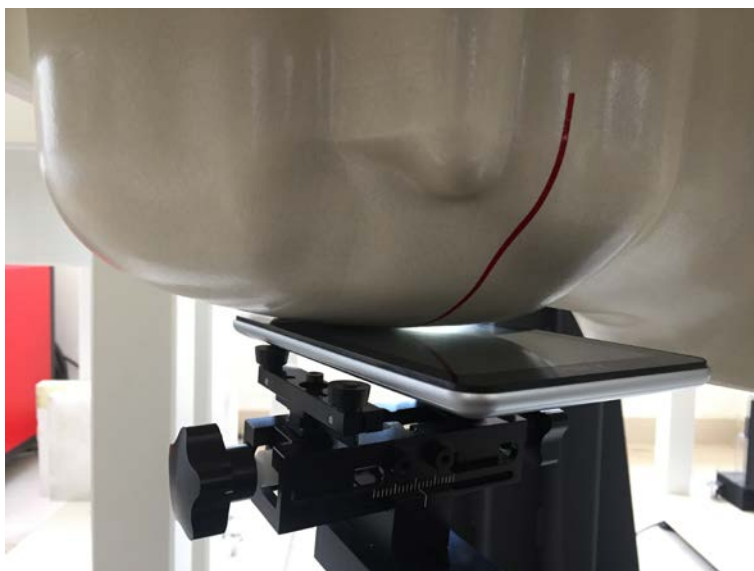
Photograph of the depth in the Body Phantom (2450MHz, 15.4cm depth)



Left Hand Cheek Position



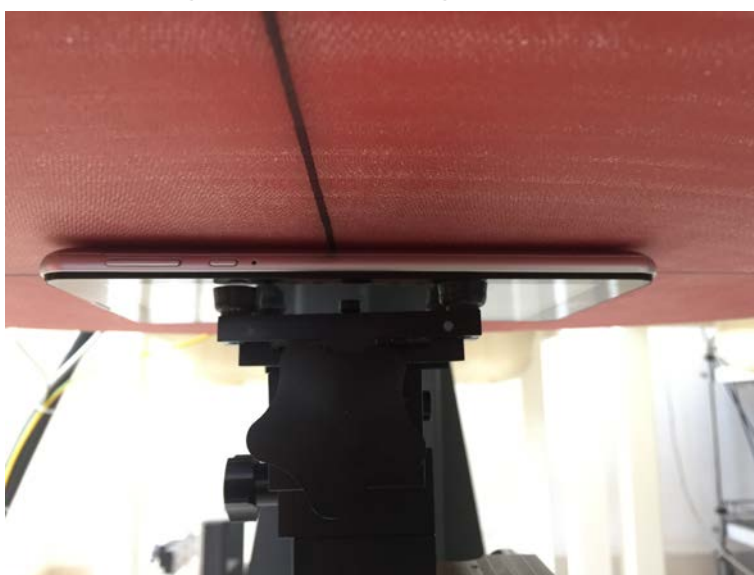
Left Hand Tilt 15 Degree Position



Right Hand Cheek Position



Right Hand Tilt 15 Degree Position



Test Position 1 - Body-worn, the rear side of the EUT towards phantom (The distance was 0mm)



Test Position 2 - Body-worn, the left side of the EUT towards ground (The distance was 0mm)



Test Position 3 - Body-worn, the right side of the EUT towards ground (The distance was 0mm)



Test Position 4 - Body-worn, the top side of the EUT towards ground (The distance was 0mm)

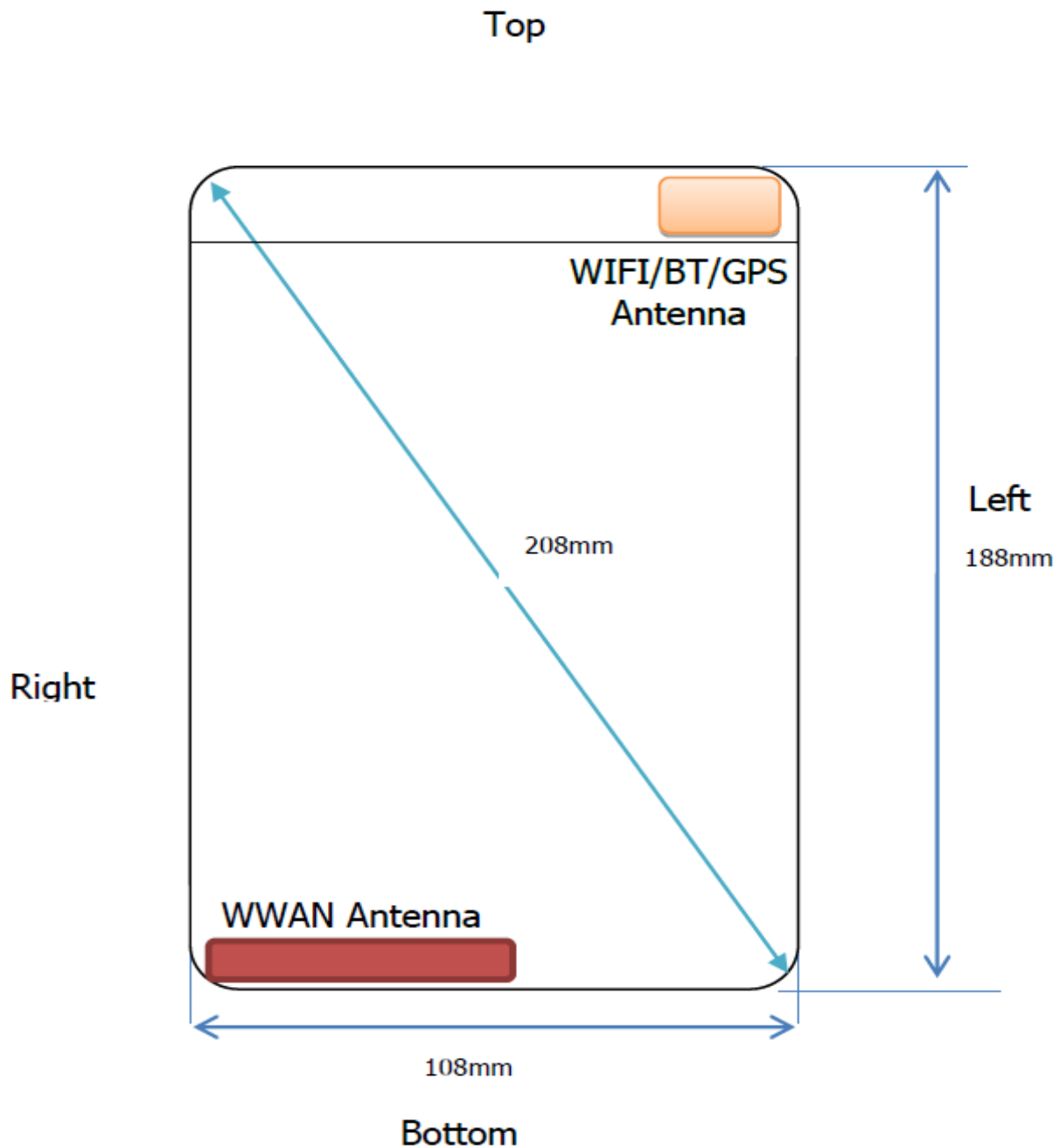


Test Position 5 - Body-worn, the bottom side of the EUT towards ground (The distance was 0mm)

2. EXTERNAL PHOTOS OF THE EUT



3. ANTENNA DIAGRAM



Antenna information:

WWAN	GSM/UMTS TX/RX Antenna
WLAN/GPS/BT	WLAN/BT TX/RX Antenna

Distance of The Antenna to the EUT surface and edge						
Antennas	Front	Rear	Top	Bottom	Left	Right
BT/WLAN	<5mm	<5mm	<5mm	178mm	<5mm	79mm
WWAN	<5mm	<5mm	171mm	<5mm	51mm	<5mm