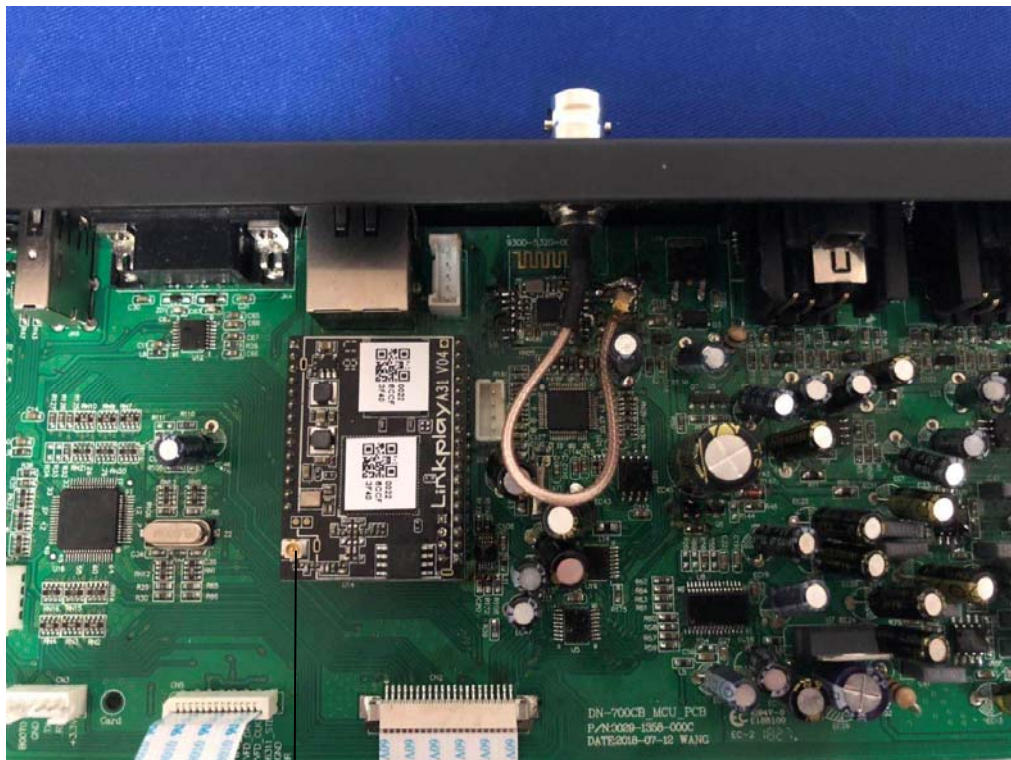
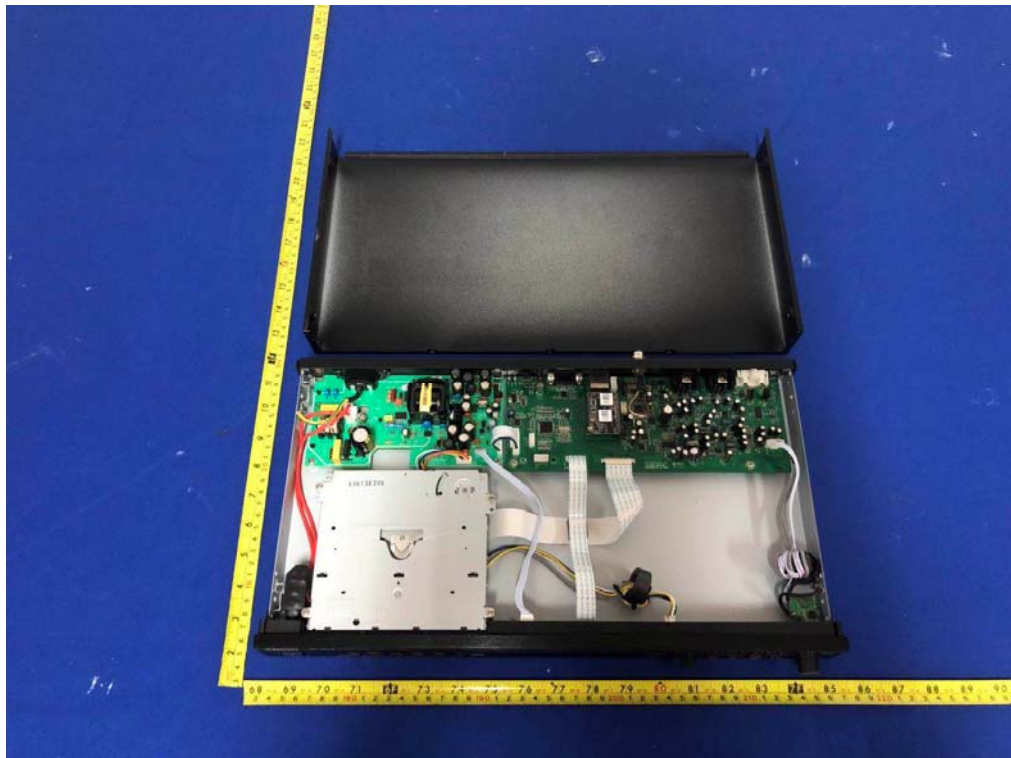


Internal Photos

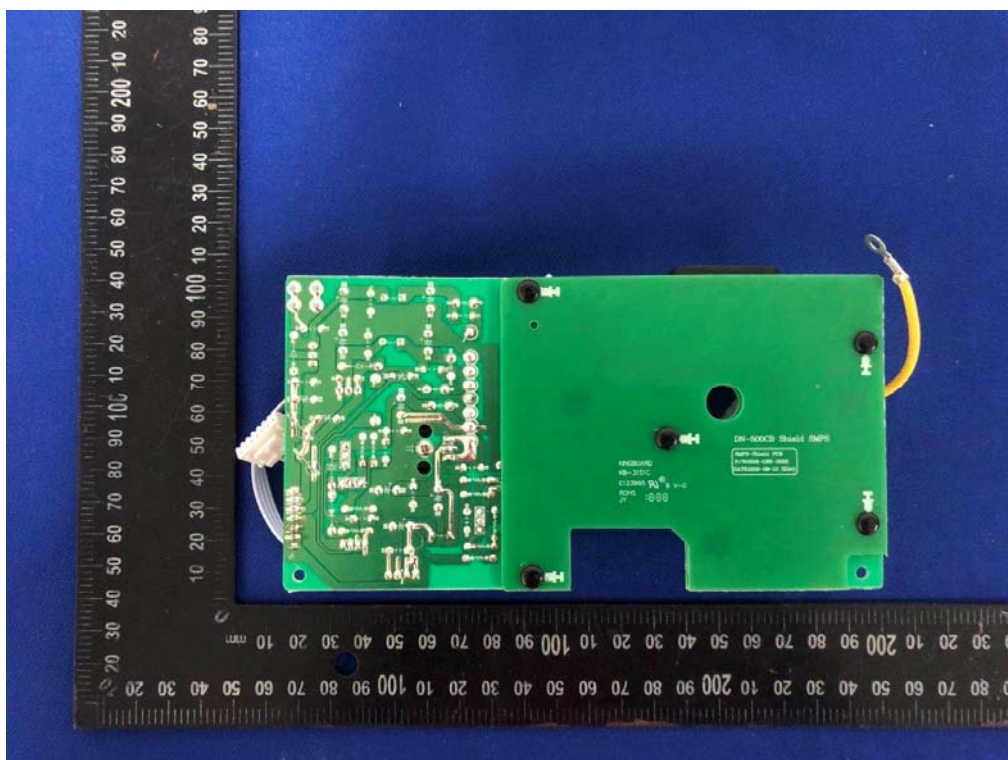
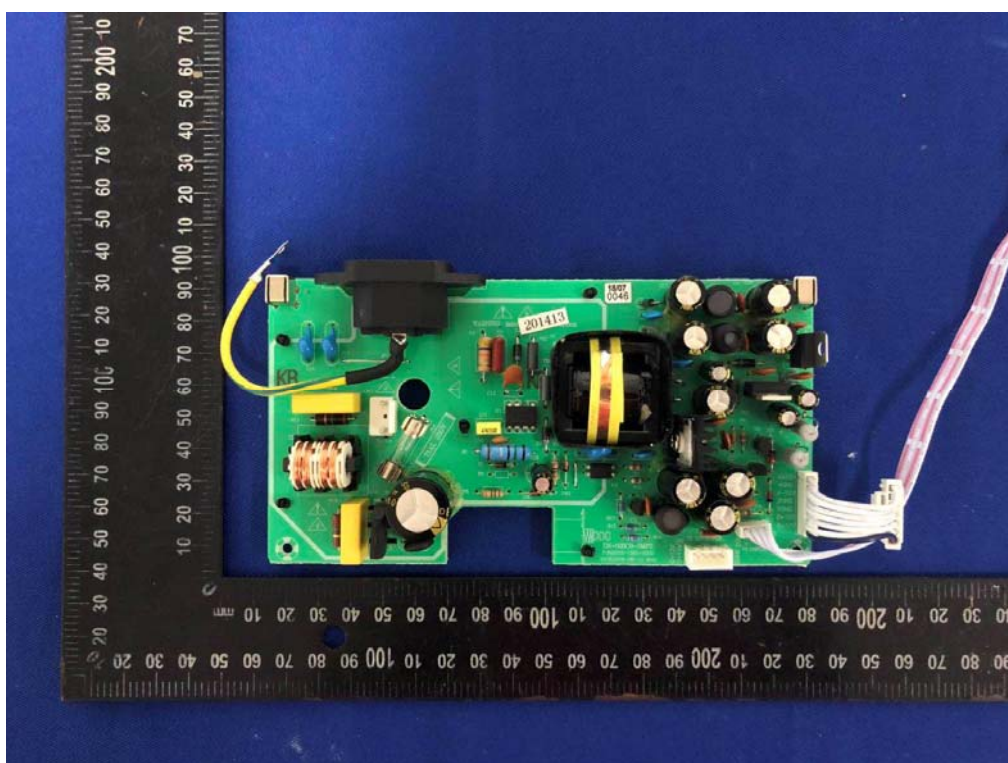
M/N: DN-700CB



This is Wi-Fi module, But closed Wi-Fi function on this product, only used the RJ45 ethernet function. The Wi-Fi function has been closed, and this ipex connector have not used.

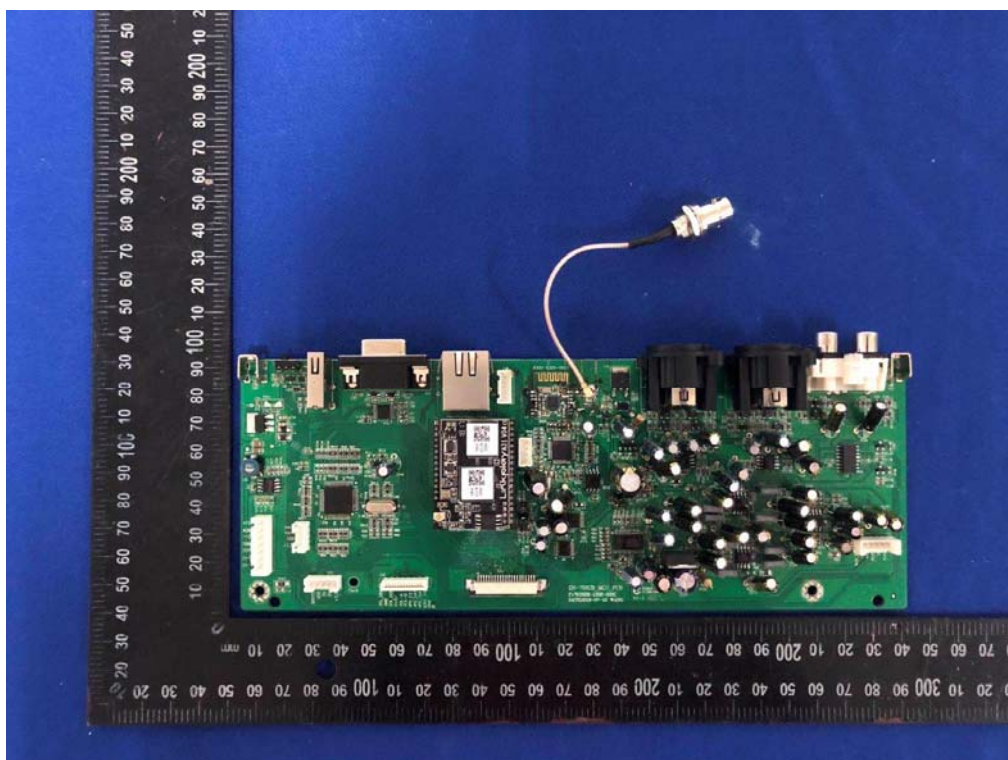
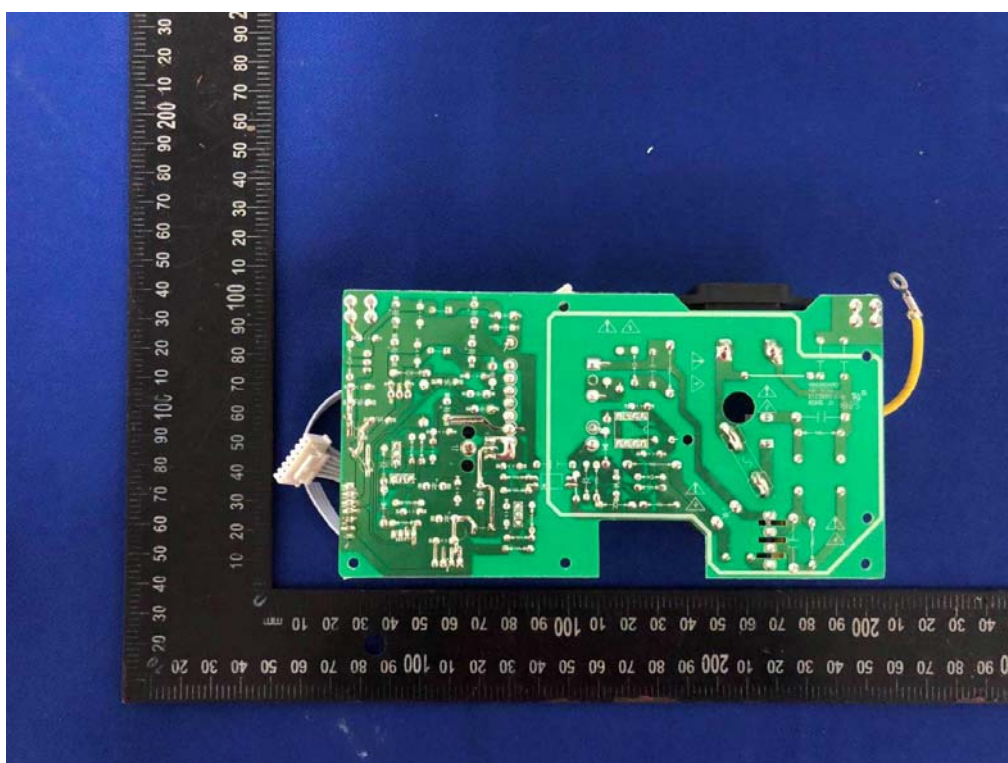
Internal Photos

M/N: DN-700CB



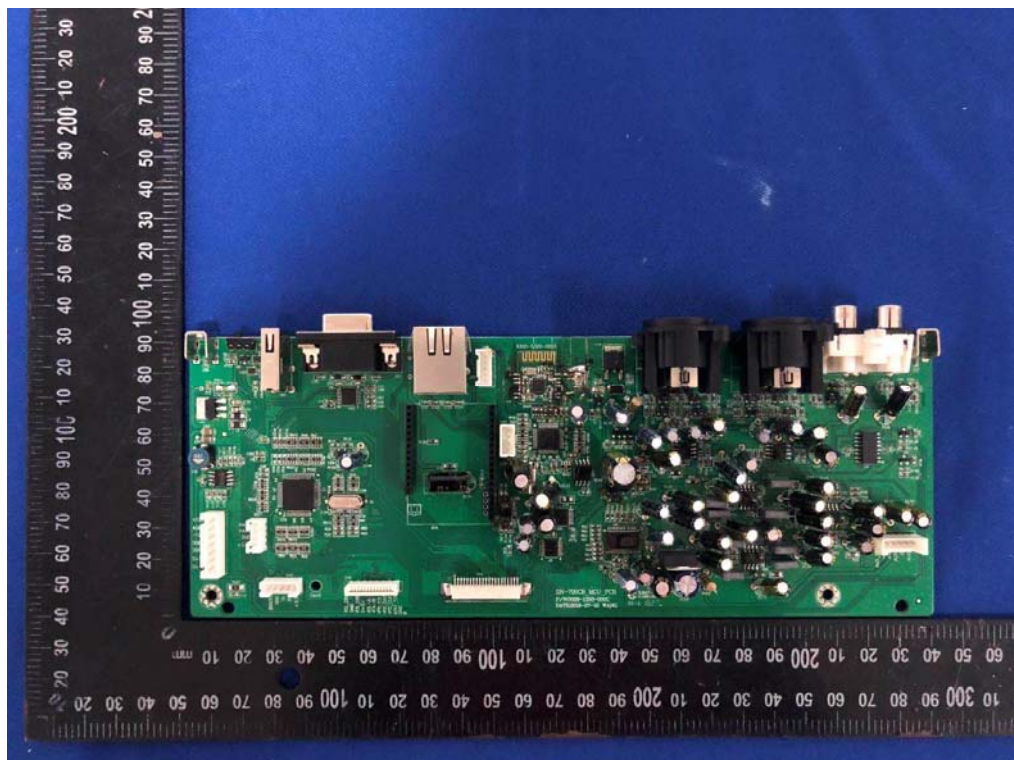
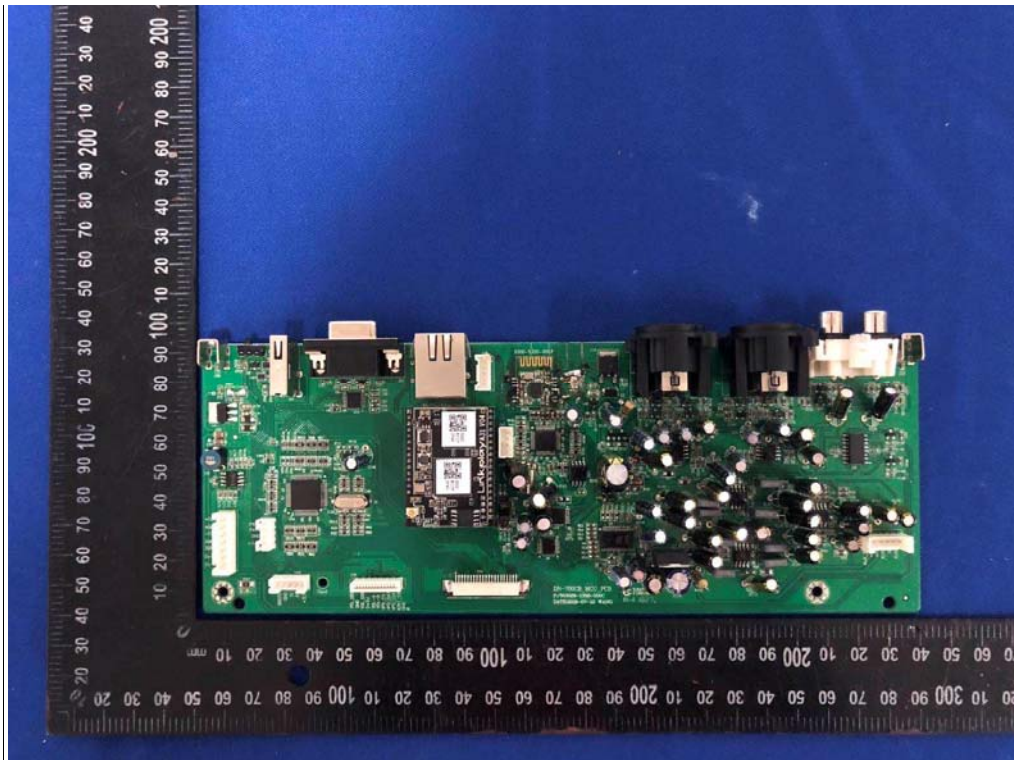
Internal Photos

M/N: DN-700CB



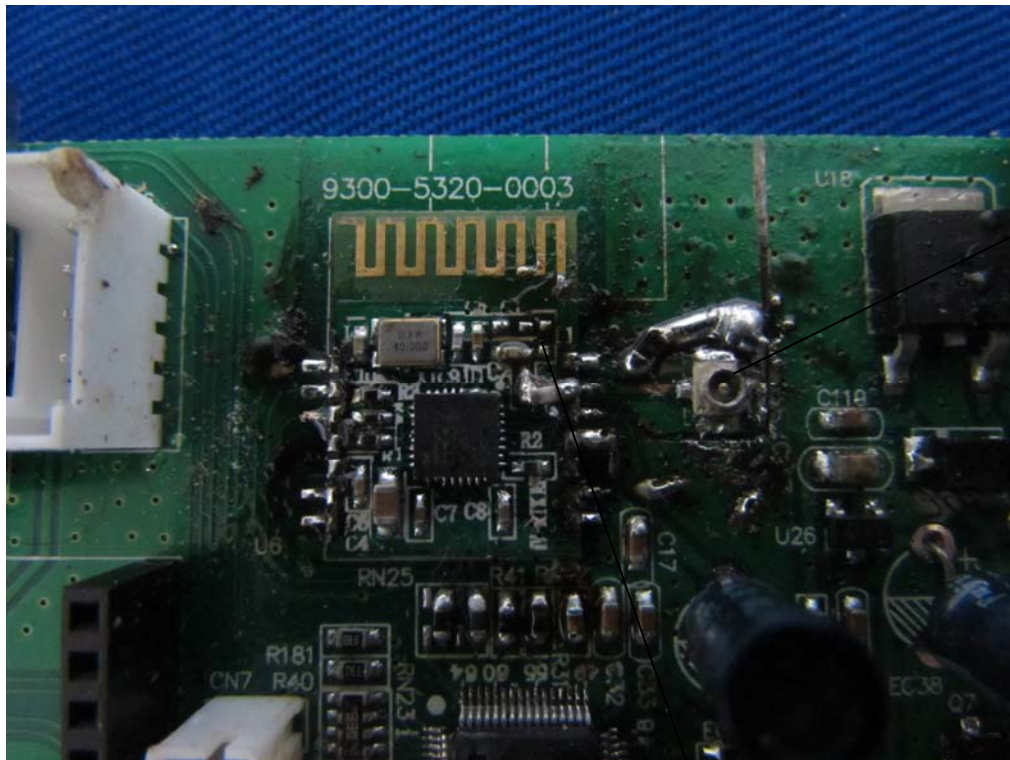
Internal Photos

M/N: DN-700CB



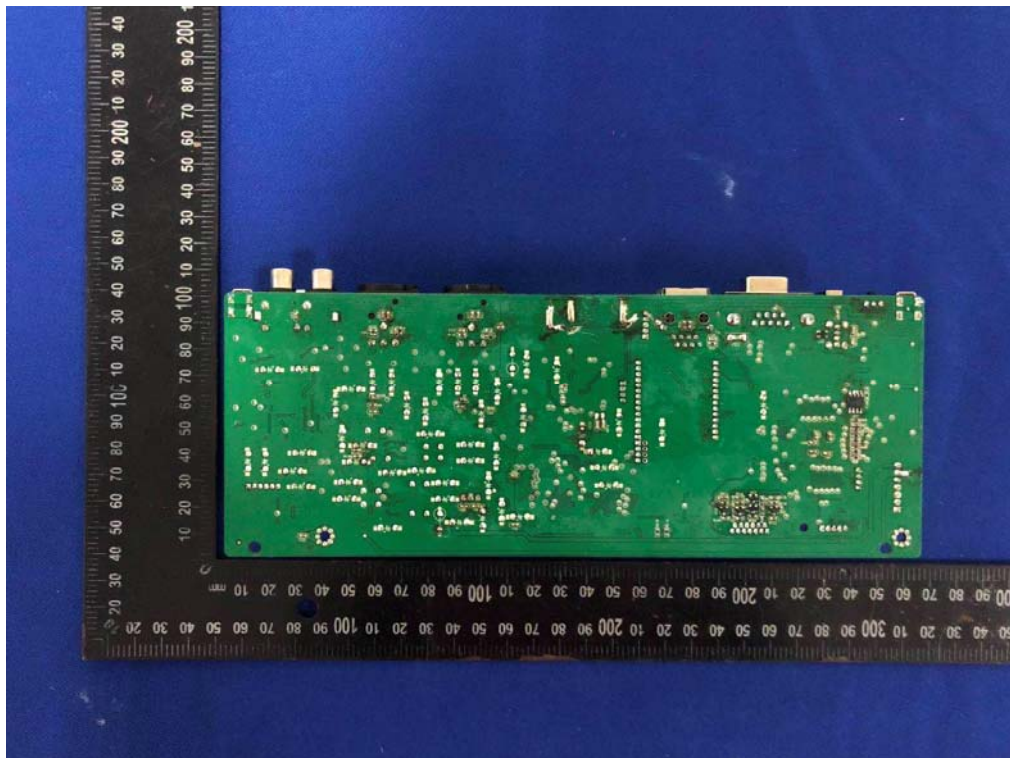
Internal Photos

M/N: DN-700CB



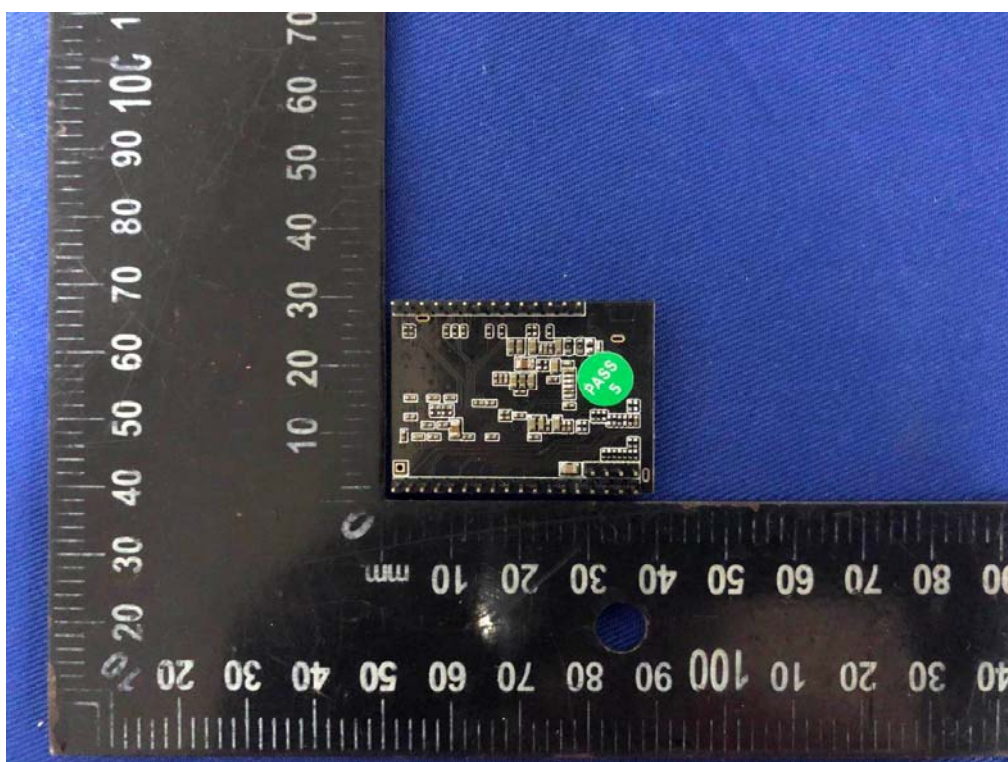
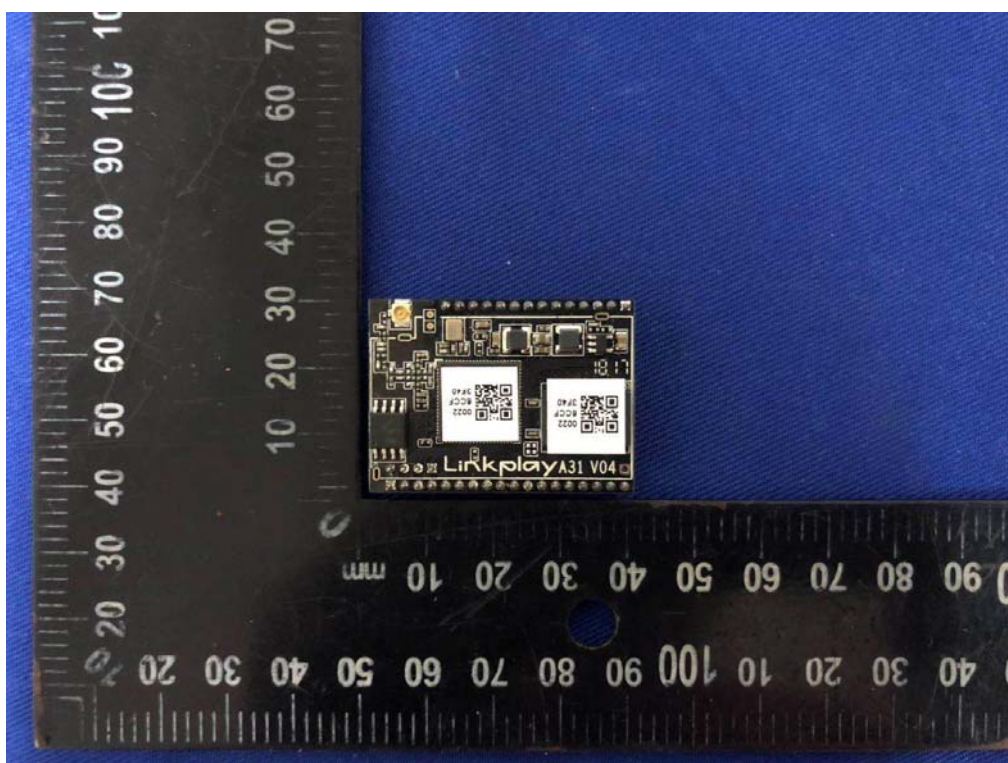
Bluetooth
iPex
connector

L1 chip inductor has been deleted, so the PCB antenna has not been used.



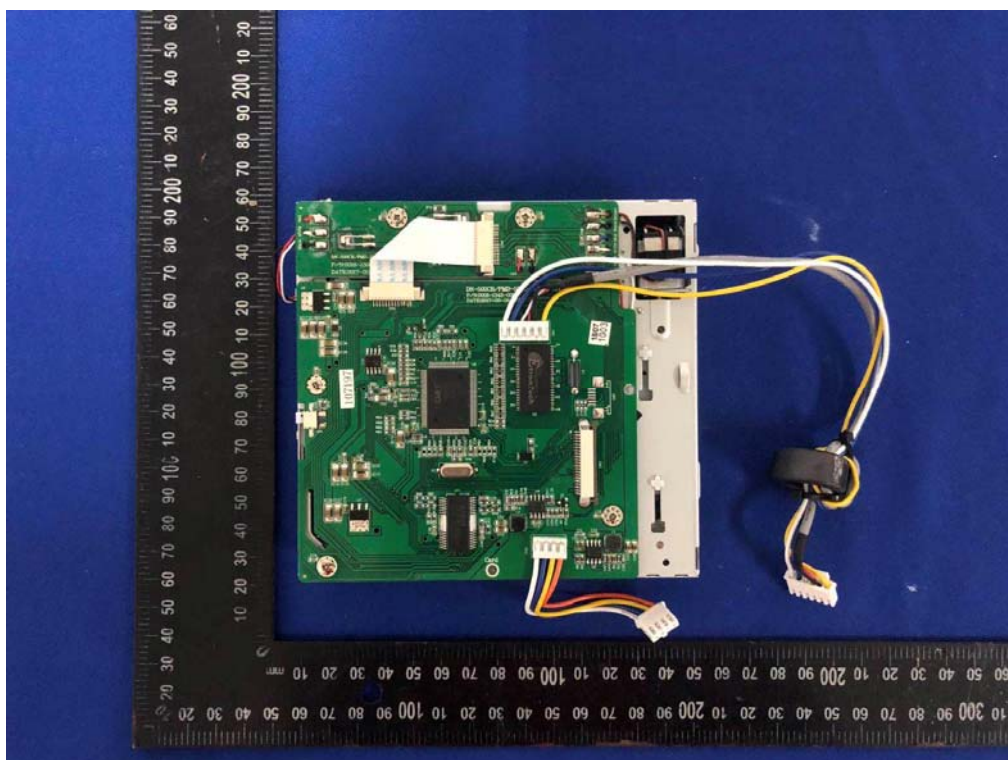
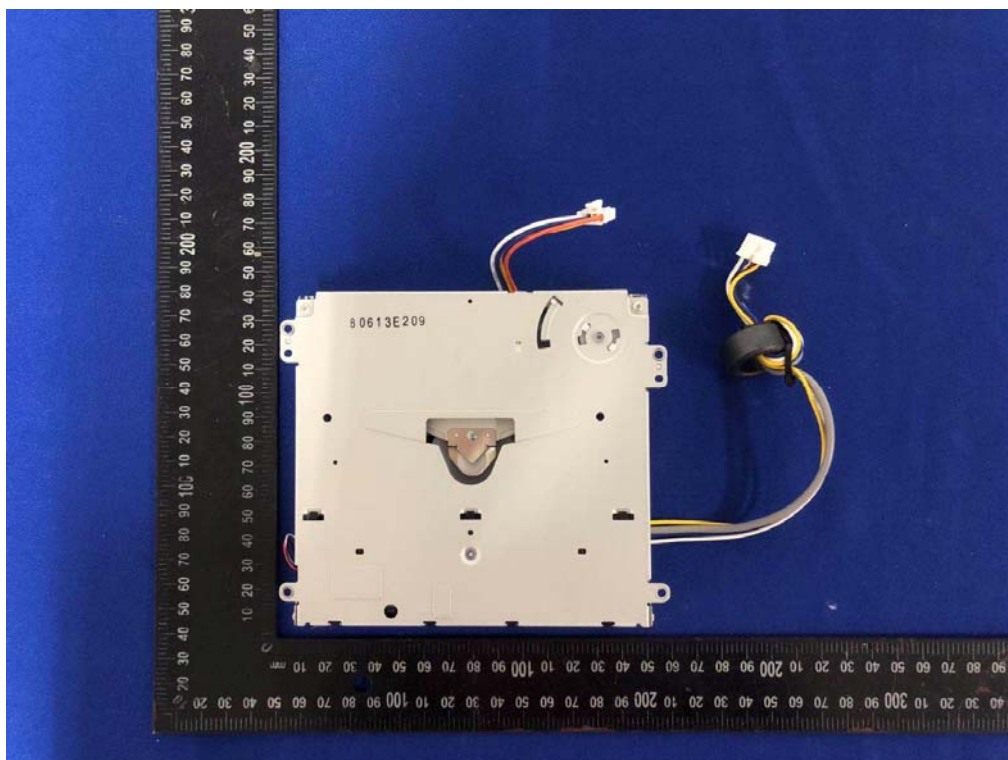
Internal Photos

M/N: DN-700CB



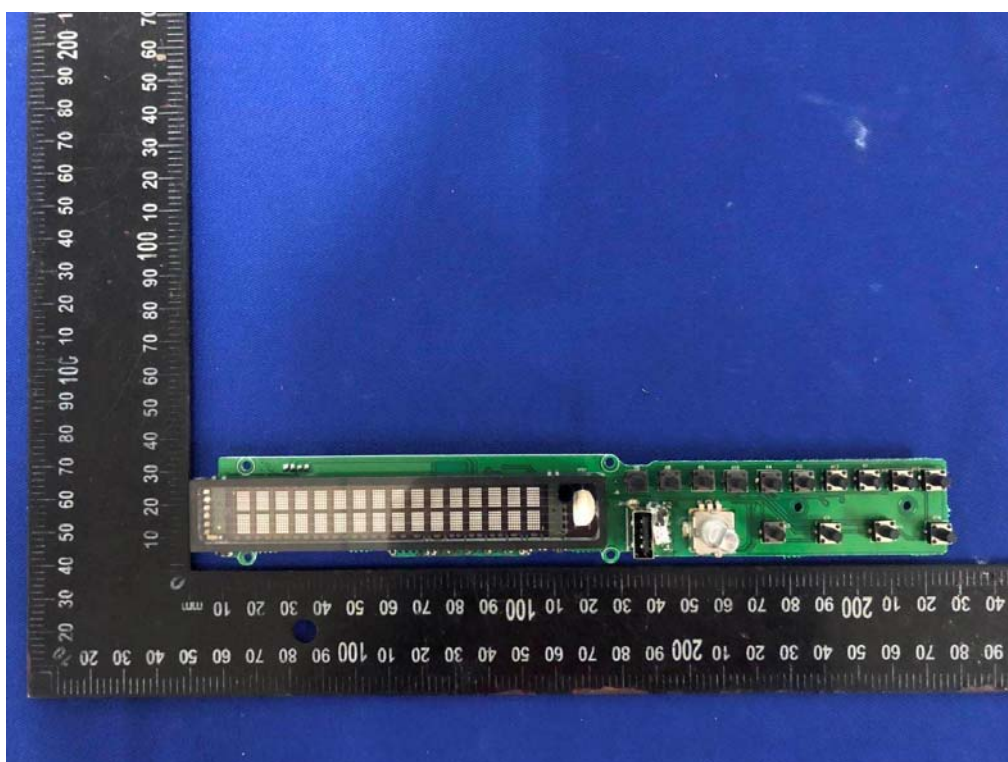
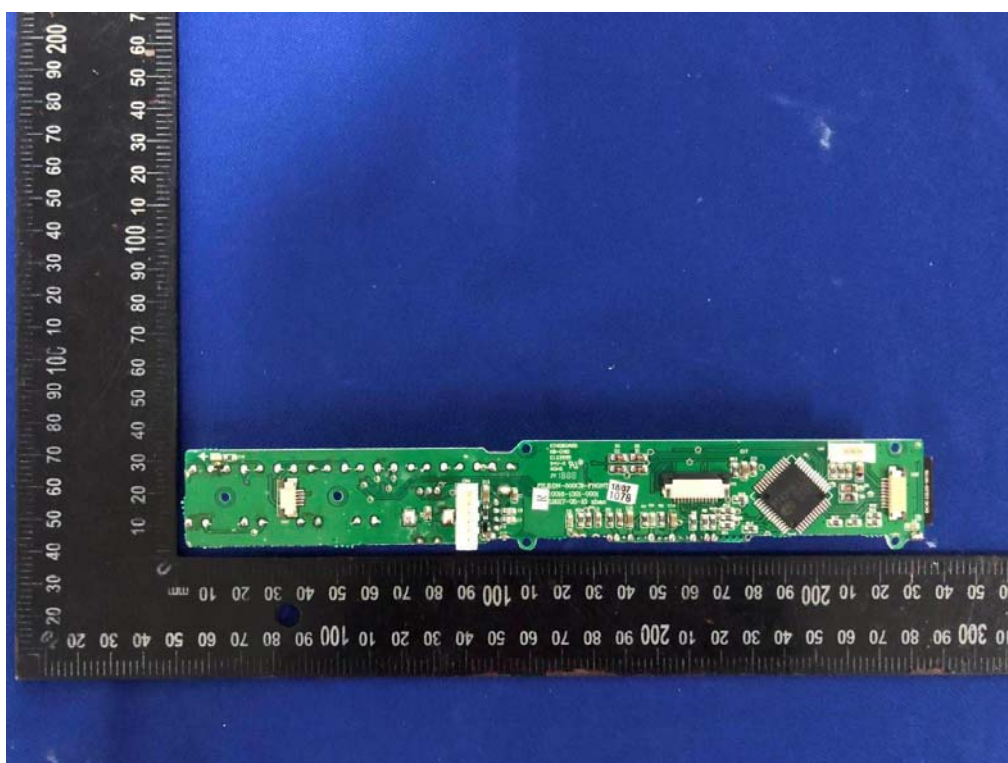
Internal Photos

M/N: DN-700CB



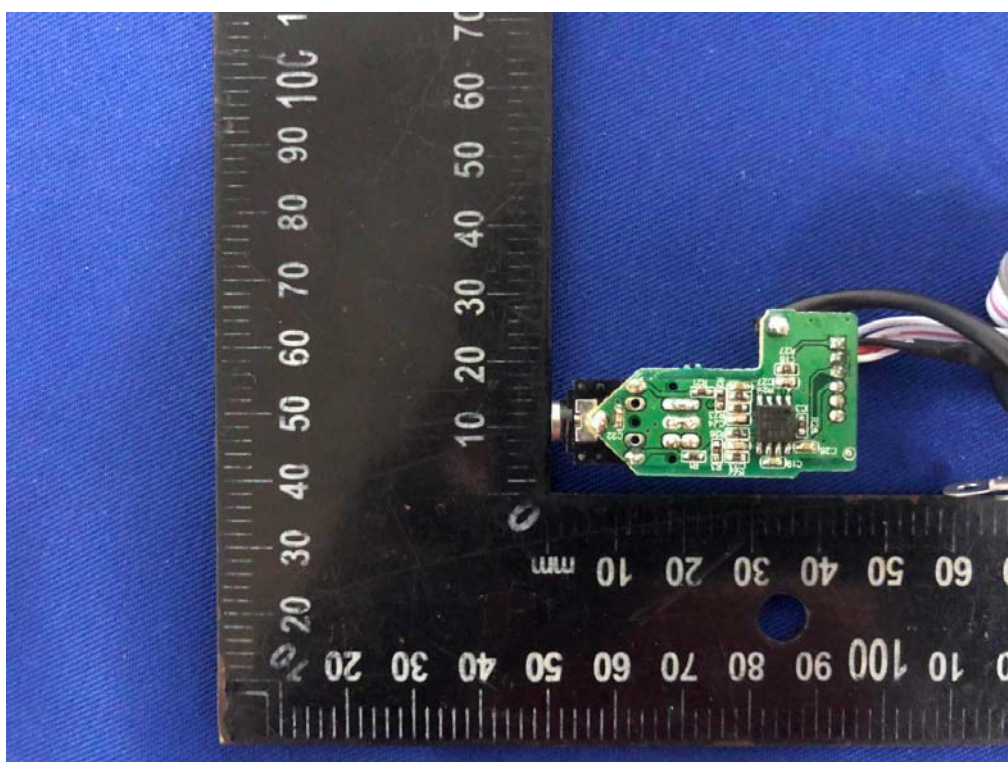
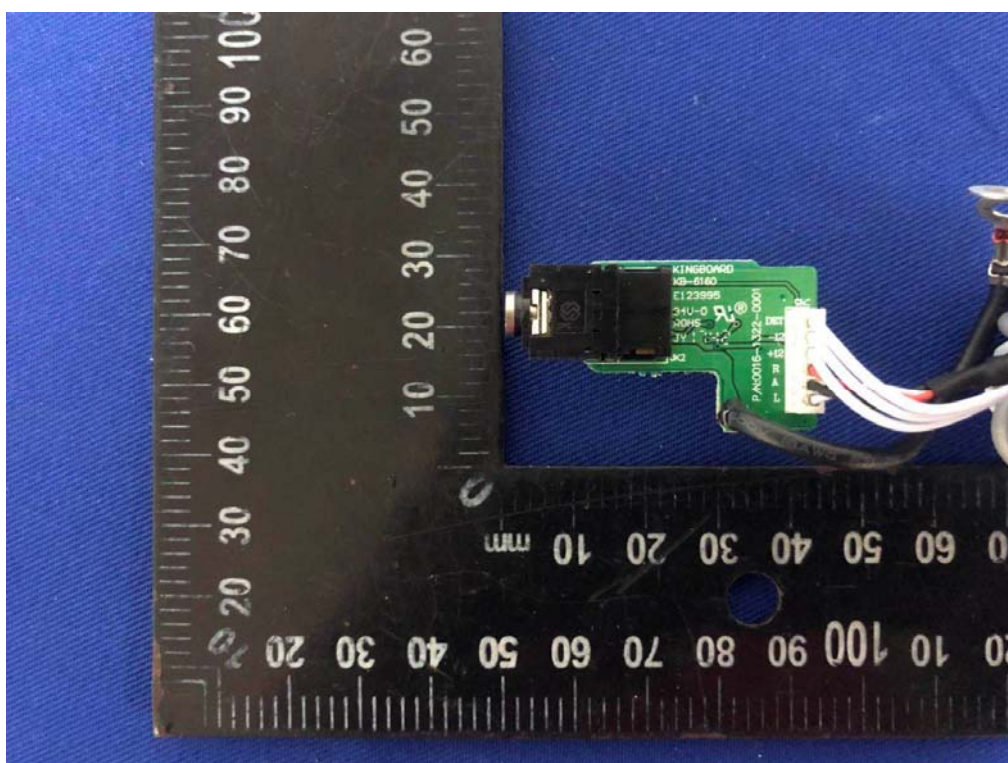
Internal Photos

M/N: DN-700CB



Internal Photos

M/N: DN-700CB



Internal Photos

M/N: DN-700CB

