

Shenzhen Saiwei Communication Technology Co., LTD

Antenna specification

project name : SMM3528

Date : Oct. 19, 2024

Add: 401, Building 211, Tairan Science Park, Tairan Four Road, Tian 'an Community,
Shatou Street, Futian District, Shenzhen

Sevvy! - Sevvy is far away and eternal!

- 1、 Introduction to project debugging
- 2、 Report version summary
- 3、 Test environment
- 4、 Main antenna darkroom data
- 5、 Environmental treatment mode
- 6、 Additional description

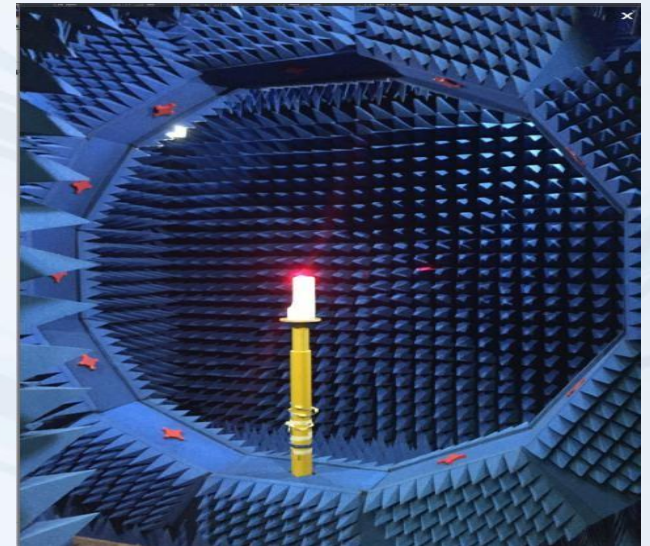
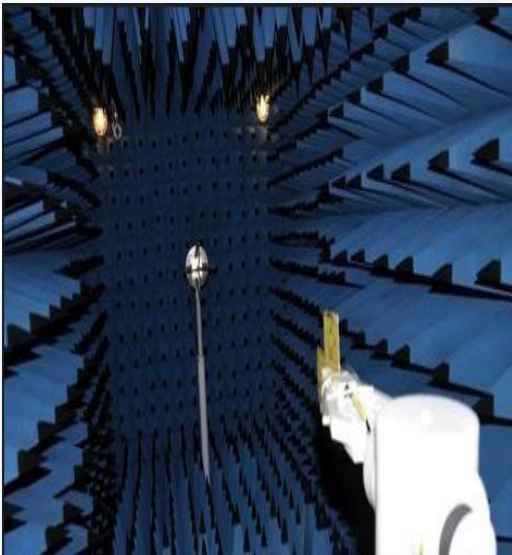
Antenna type: Onboard Antenna

Introduction to project

type							
Type/platform	mainboard						
Antenna profile	main antenna		Antenna band	Antenna state	Antenna debugging mode	Antenna design area	Match changed
		2G					
		3G					
		4G					
	other antenna	BT/WIFI	2.4G/5.8G		Onbord	mainboard	
		GPS					
		diversity					
Prototype status							
Environmental treatment							
clients' requirement	customer-specified						

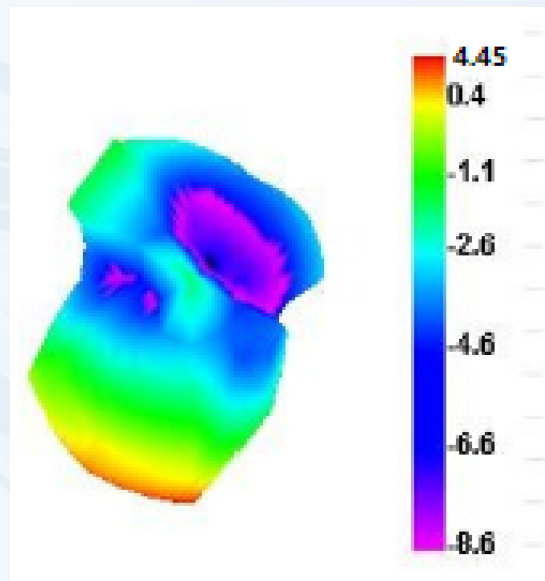
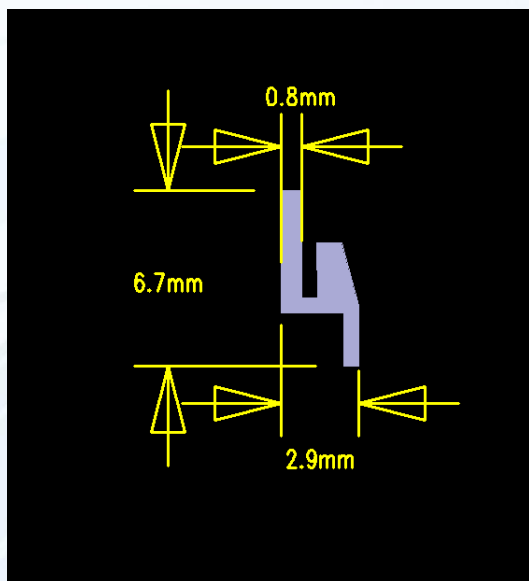
Report version summary

Version	Date	Content overview
V1	Oct. 19, 2024	data report



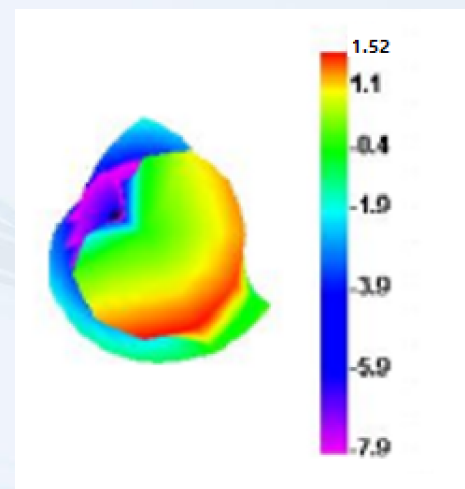
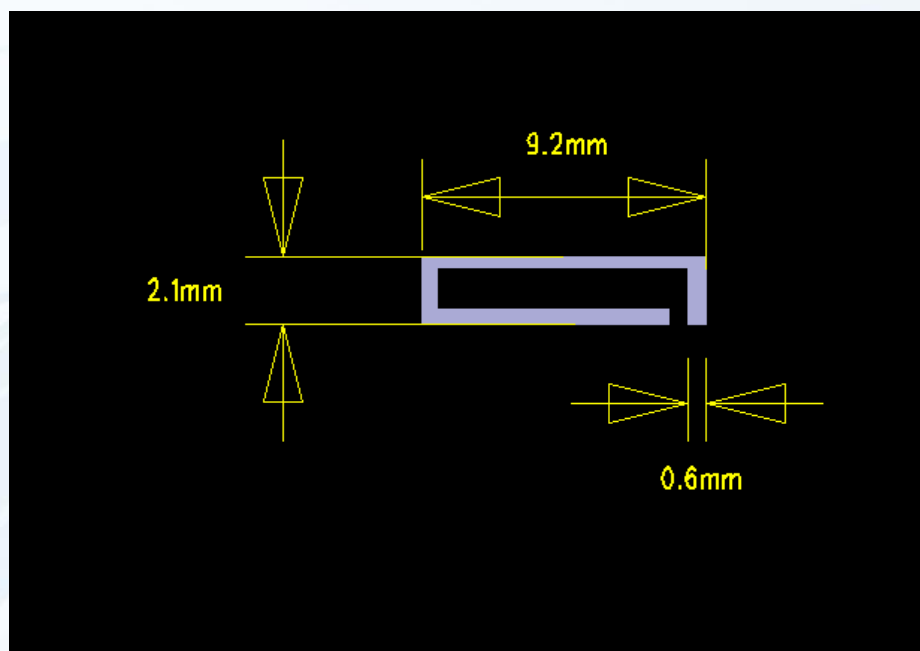
1.WIFI/5G

Freq. (MHz)	5000	5100	5200	5300	5400	5500	5600	5700	5800
Gain	1.37	4.23	1.32	4.45	2.01	3.22	1.68	2.64	1.44
Effi (%)	36.1	55.4	41.4	53.8	50.1	51.8	41.1	45.2	40.2



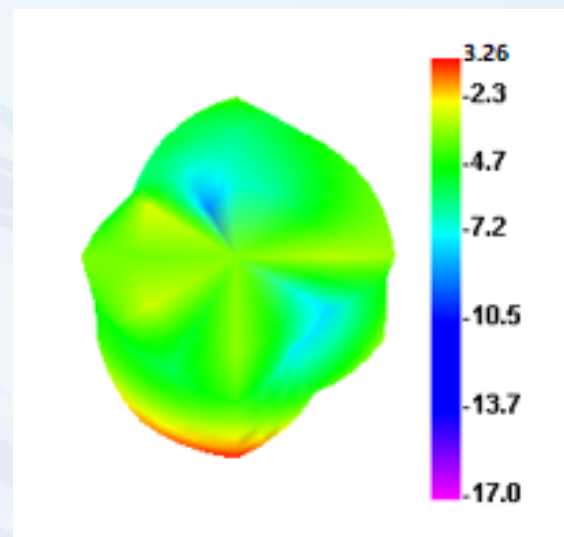
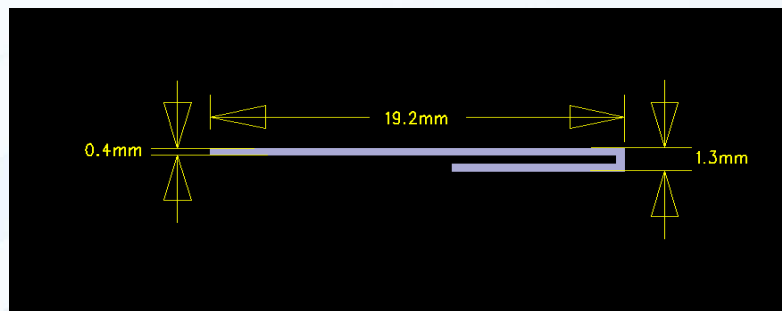
2.BT

Freq. (MHz)	2400	2410	2420	2430	2440	2450	2460	2470	2480	2490	2500
Gain	1.31	1.47	1.52	1.21	1.09	0.65	-0.14	-0.92	-0.28	-0.67	0.16
Effi (%)	35.3	35.6	36.8	35.2	35.7	34.8	32.8	30.1	29.3	28.6	29.9



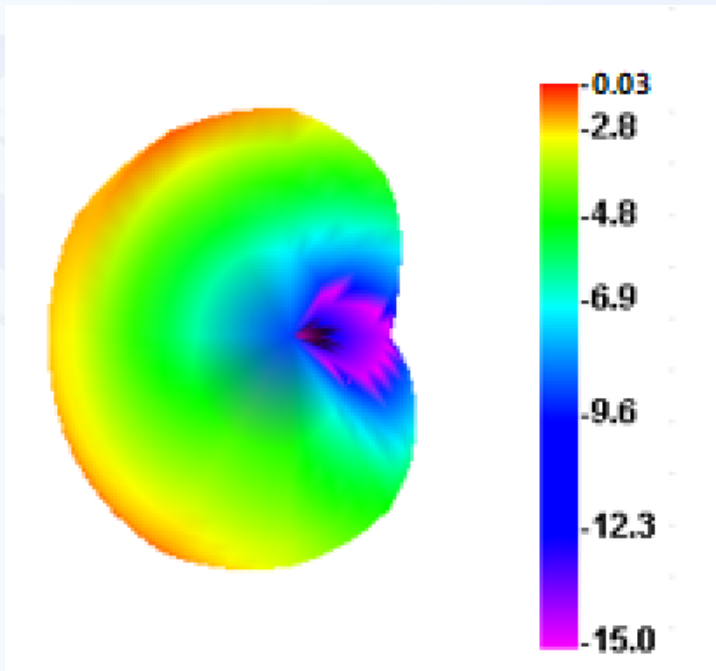
4.WIFI/5G

Freq. (MHz)	5000	5100	5200	5300	5400	5500	5600	5700	5800
Gain	1.95	3.26	0.55	2.42	1.73	0.42	0.36	1.21	1.38
Effi (%)	45.3	60.3	45.1	52.4	40.9	41.2	36.7	37.2	35.7



5. BT

Freq. (MHz)	2400	2410	2420	2430	2440	2450	2460	2470	2480	2490	2500
Gain	-1.18	-1.11	-0.03	-1.16	-1.07	-1.44	-1.55	-1.89	-1.48	-1.19	-1.06
Effi (%)	31.33	31.4	32.02	31.95	32.96	31.54	30.11	28.93	30.47	31.98	32.39



additional remark



Please carefully confirm whether the matching circuit mentioned in the report has been modified, and whether the environment has been treated Import, which will directly affect antenna performance.



The parameters provided in this report are only the parameters provided by the customer to our company for testing the prototype, and do not represent your company Final mass production status of the final project.



If your company has the latest trial production, or update the status (replace materials, update software, replace rings)
Please submit the prototype to our company for verification as soon as possible to confirm whether the antenna performance is affected.



If you need to send a third party retest or send a customer test, be sure to require testing The machine is sent to our company for testing and confirmation, because the consistency of the motherboard, the consistency of the assembly, and the difference of the antenna assembly may lead to the deviation of the antenna parameters.

THANK YOU

