

## LED FLOOD LIGHT

Product Manual

MODEL: H05HCW

### SAVE THESE INSTRUCTIONS

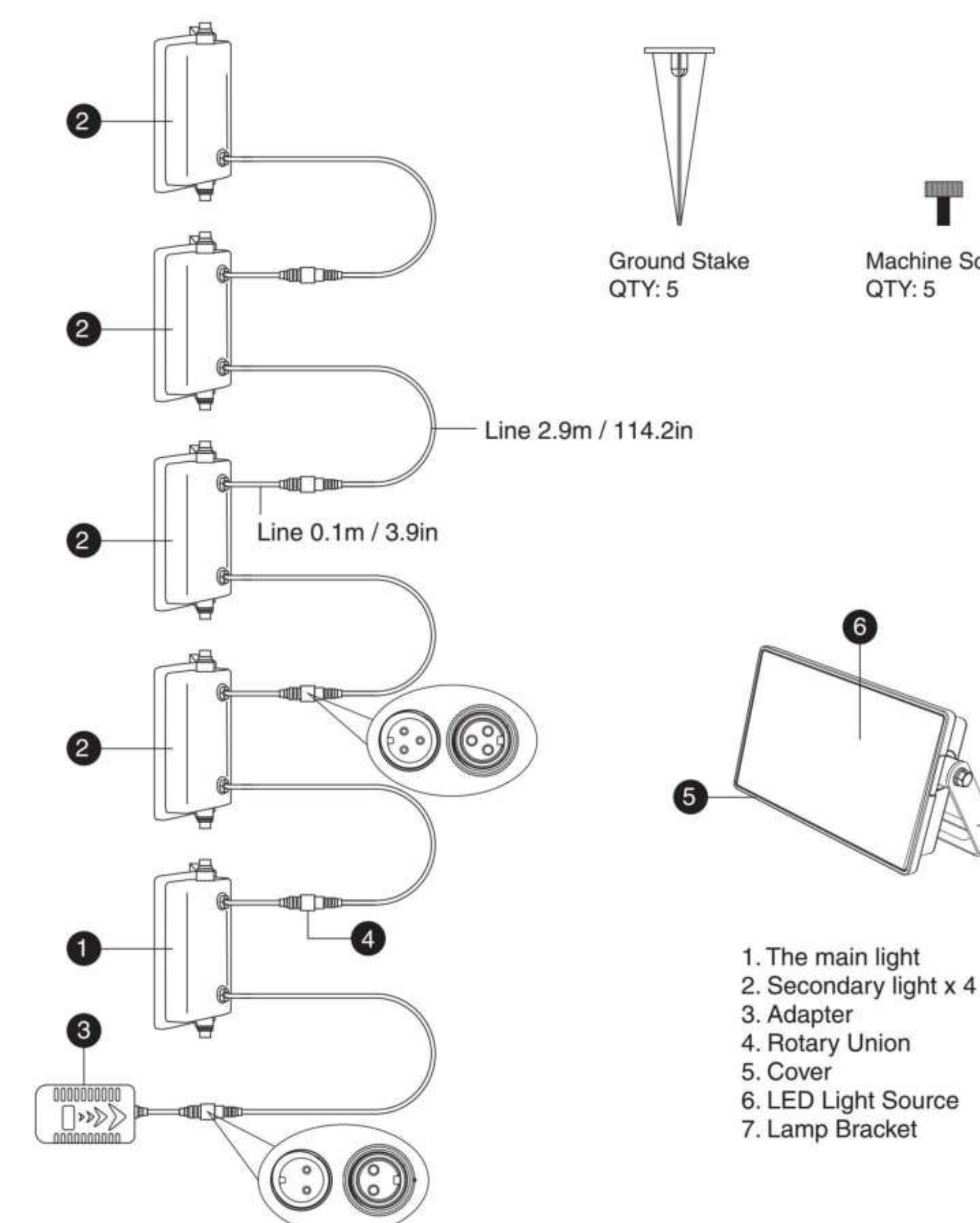
#### IMPORTANT SAFETY INSTRUCTIONS

- Please read all instructions before proceeding with installation.
- Check all components for damage, do not use the product if it is damaged.
- The light is IP66 waterproof, but the power adapter is non-waterproof.
- Please do not expose it to rainy, watery or humid environment.
- Tighten up the waterproof cap before installing the floodlight.
- The light source of this luminaire is not replaceable; when the light source reaches its end of life the whole luminaire shall be replaced.
- To reduce the risk of strangulation, the flexible wiring connected to this luminaire shall be effectively fixed to the wall if the wiring is within arm's reach.
- Do not allow children to assemble and install this product without adult supervision.
- This product is not a toy. Do not let children play it as a toy.
- Do not install the product on (normally) flammable surfaces or near major heat sources.
- This product is a non-dimmable product. To avoid failure, please don't connect it with the dimming controller.
- This product is used for creating ambience, not suitable for lighting.
- This product can only be used with the provided power adapter.

2



### COMPONENTS AND STRUCTURE



Line 2.9m / 114.2in

Line 0.1m / 3.9in

1. The main light
2. Secondary light x 4
3. Adapter
4. Rotary Union
5. Cover
6. LED Light Source
7. Lamp Bracket

2



### SPECIFICATIONS

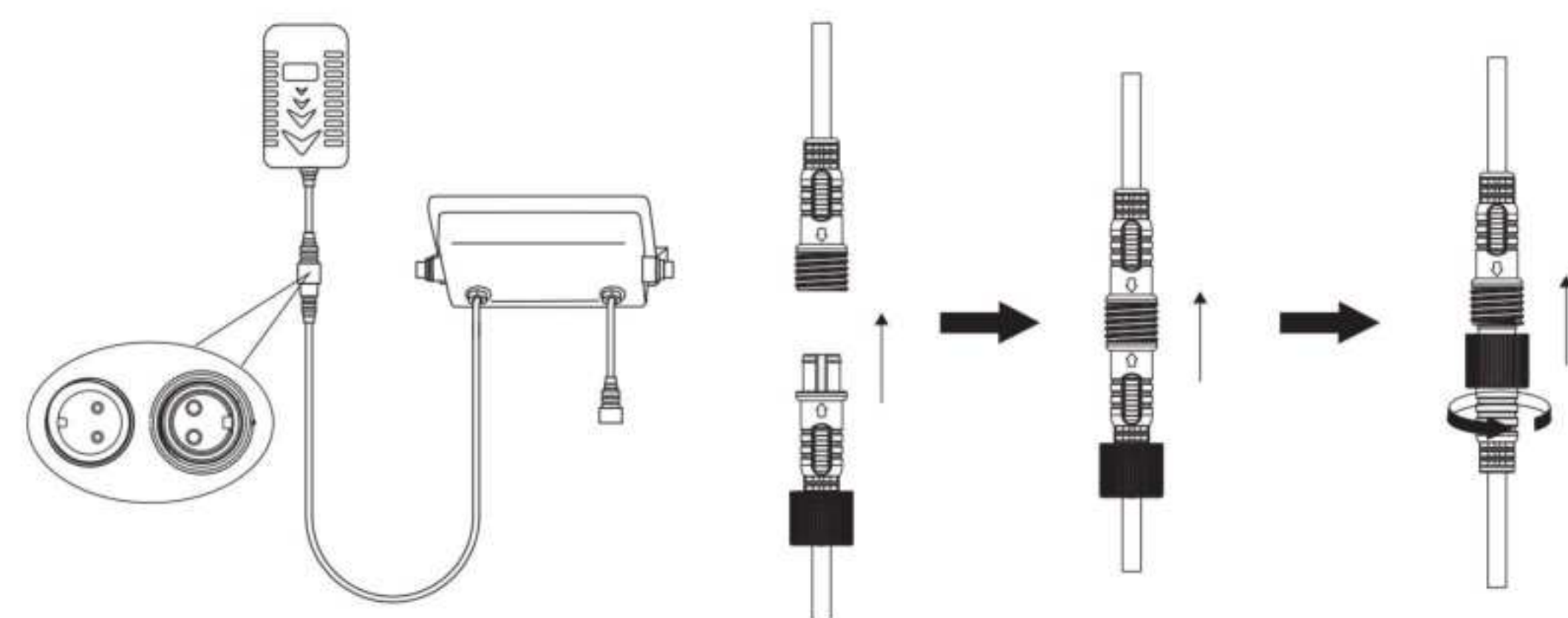
LED FLOOD LIGHT	
Model	H05HCW
Input of Adapter	100-240V ~ 50/60Hz 1.2A Max
Input of Lamp	24V ~
Rated Power	28W Max
CCT	2700K
Color	RGB
Life Expectancy	30000hours
Beam Angle	120°
θ <sub>a</sub>	-20-40°C/-4°F-104°F
Luminaire Location	SUITABLE FOR DAMP LOCATIONS (Except the power adapter)
DIMENSIONS	
Model	H05HCW
Dimensions (LxHxW)	145*91.5*32mm / 5.7*3.6*1.26in

3

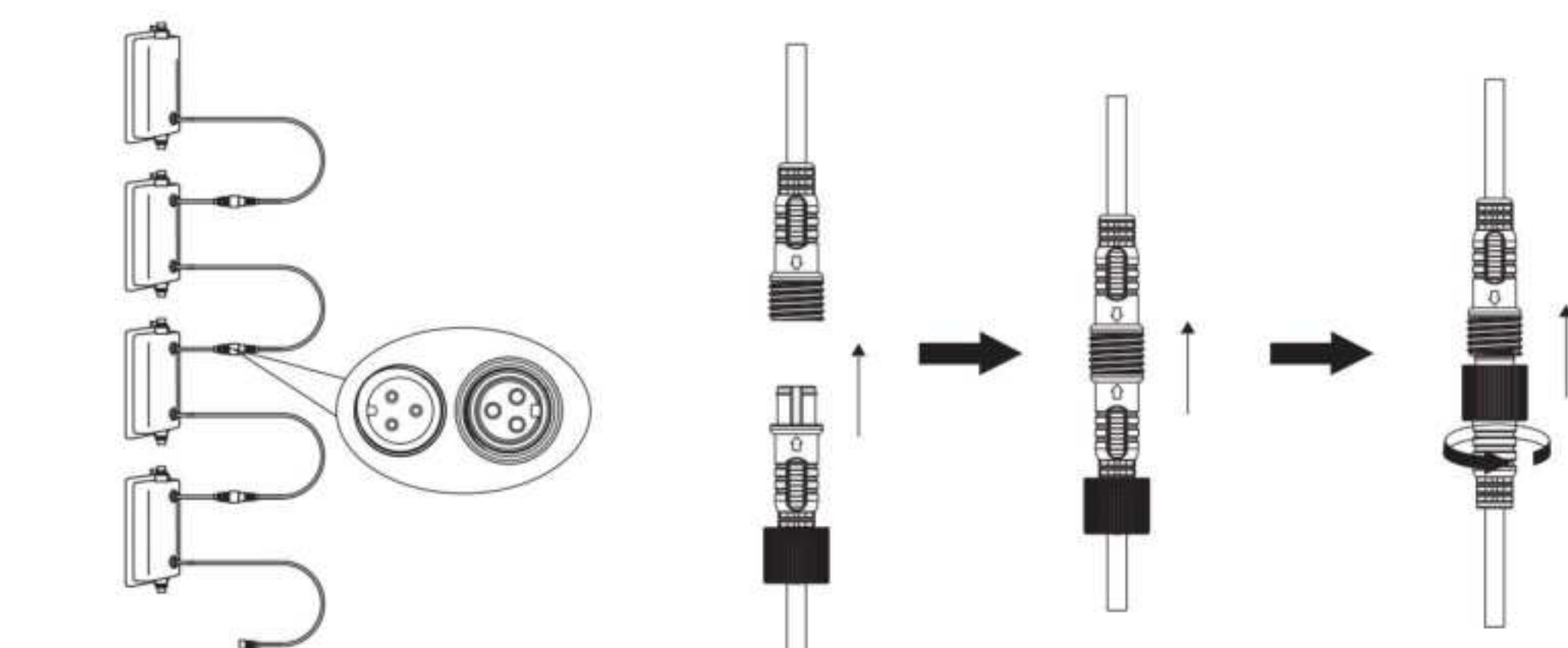


### How to connect the lights

1. Connect the main light and the adapter first, then insert the male and female connectors with the arrows aligned as shown in the diagram, and tighten the waterproof cap.  
NOTE: Inserting the connectors without the arrows aligned will burn out the light.



2. Light to light connections: Insert the male and female connectors with the arrows aligned as shown in the diagram, then tighten the waterproof cap.  
NOTE: Inserting the connectors without the arrows aligned will burn out the light.



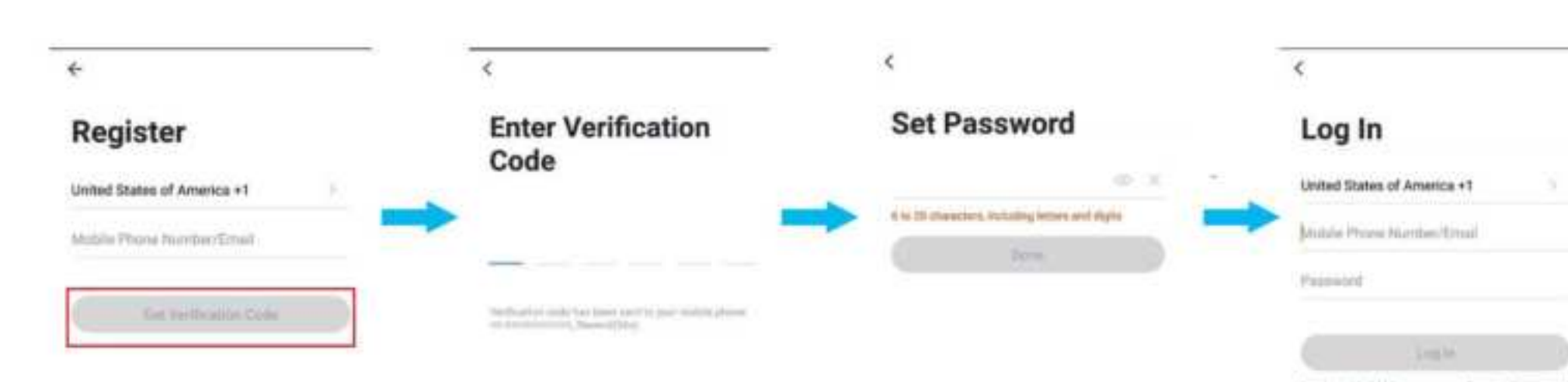
NOTE: Only when all five lights are attached on the control cable can this device function properly.

3



### PAIRING LED LIGHT WITH "Onforu" APP

- Step 1:** "Onforu Home" App Download.  
There are 2 options for obtaining and downloading the "Onforu Home" App on your smart device.  
1. Scan the QR code on the right.  
2. Search for "Onforu Home" in the App Store or Google Play.



- Step 2:** Enter the "Onforu Home" App. Register an account and log in. If you already have an account for Onforu Home App, Please select "Log in with existing account".

**Note:** You will need your "Onforu Home" App username and password to pair with Amazon Alexa and/or Google Assistant.



- Step 3:** Please turn on the Wi-Fi and Bluetooth before connecting LED lights to the "Onforu Home" App.

4

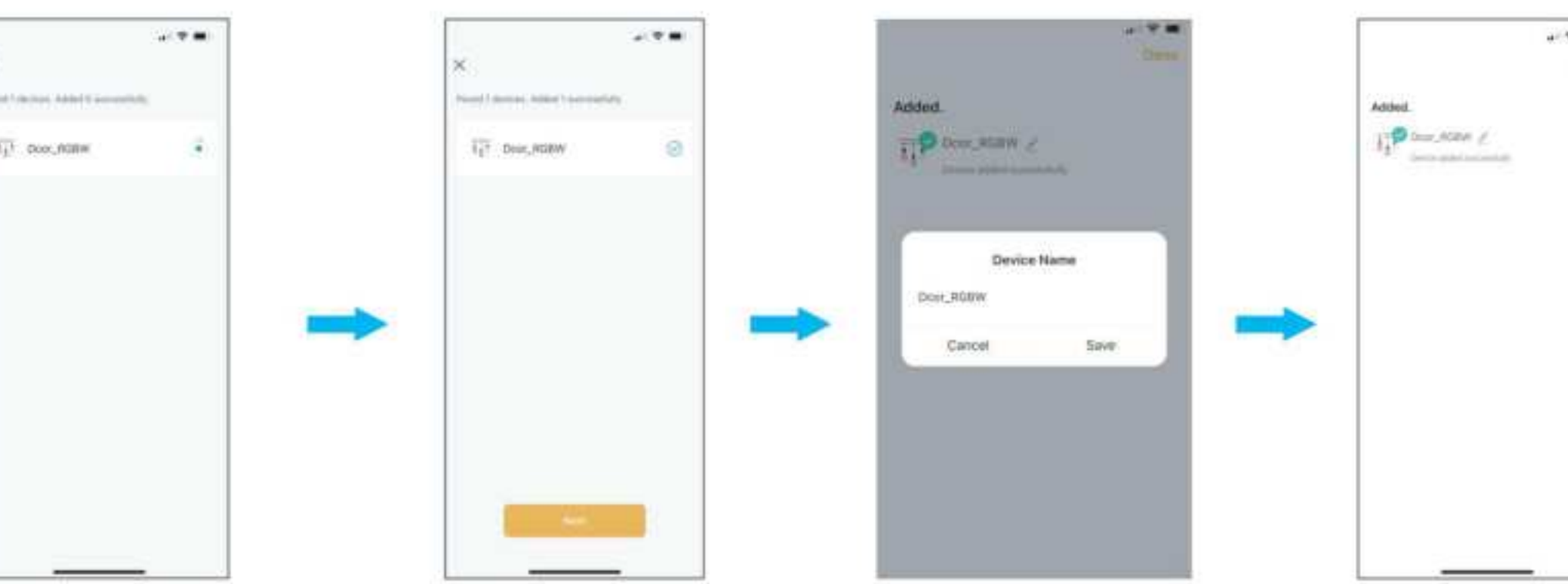


- Step 4:** How to pair the LED Light  
Set the light to the pending pairing state.  
1. Power on the LED Light.  
2. Turn the light on and off 3 times until it starts flashing, indicating that the light is ready for pairing.

#### Method 1



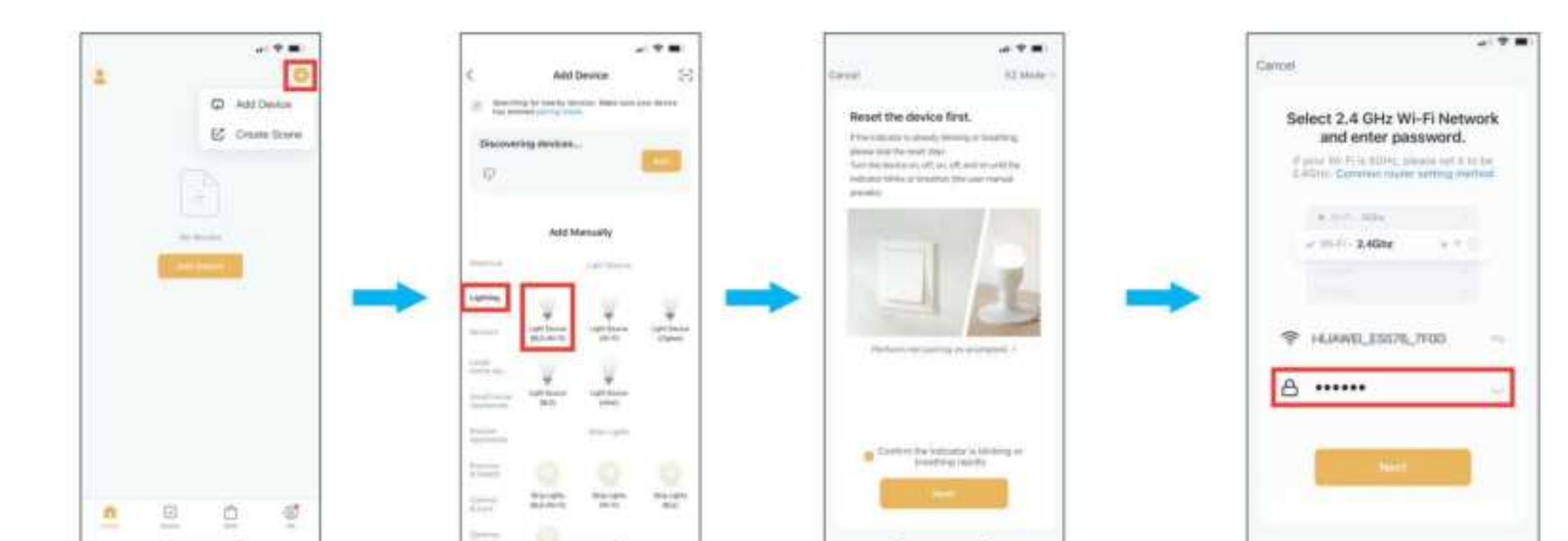
1. Tap "+" button on top right corner and tap "Add Device" to add device.
2. The app will automatically search for the device. After discovering the device, tap "Add".
3. Enter Wi-Fi password to join your network.  
Please Note:  
a. This smart LED Light can only support 2.4 GHz network and cannot work with 5.0 GHz network.  
b. Please check if your home network is 2.4 GHz and make sure that your phone has been connected to your Wi-Fi network. Please ensure your network is not hidden.



4. Wait for the device to register (about 30-60s).
5. Tap "Next" to complete the light pairing.
6. You can tap "✓" to change the device name.
7. Tap "Done" to enter the control panel.



#### Method 2



1. Tap "+" button on top right corner and tap "Add Device" to add device.
2. Tap "Lighting" and then "Light Source" to enter next page.
3. Tap the "Next" button to pair the LED Light.
4. Enter Wi-Fi password to join your network.  
Please Note:  
a. This smart LED Light can only support 2.4 GHz network and cannot work with 5.0 GHz network.  
b. Please check if your home network is 2.4 GHz and make sure that your phone has been connected to your Wi-Fi network. Please ensure your network is not hidden.

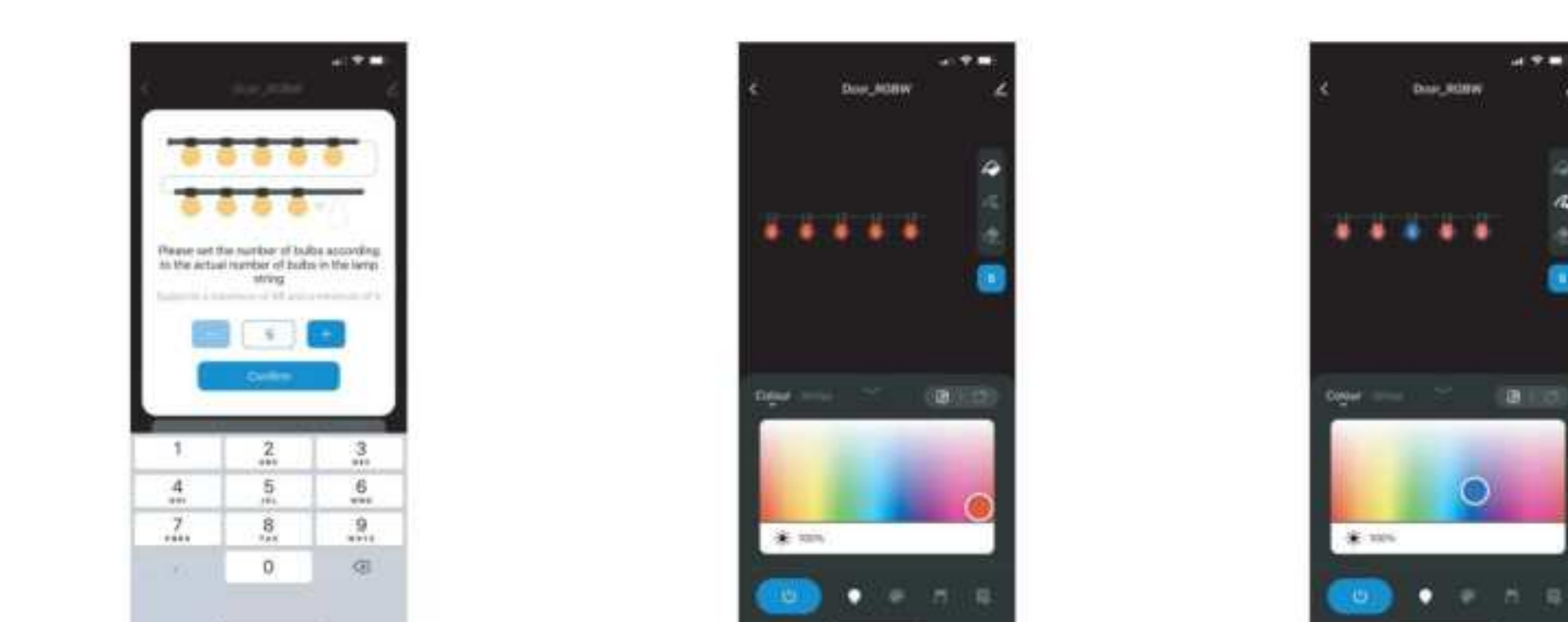


5. Wait for the device to register (about 30-60s).
6. Tap "Next" to complete the light pairing.
7. You can tap "✓" to change the device name.
8. Tap "Done" to enter the control panel.

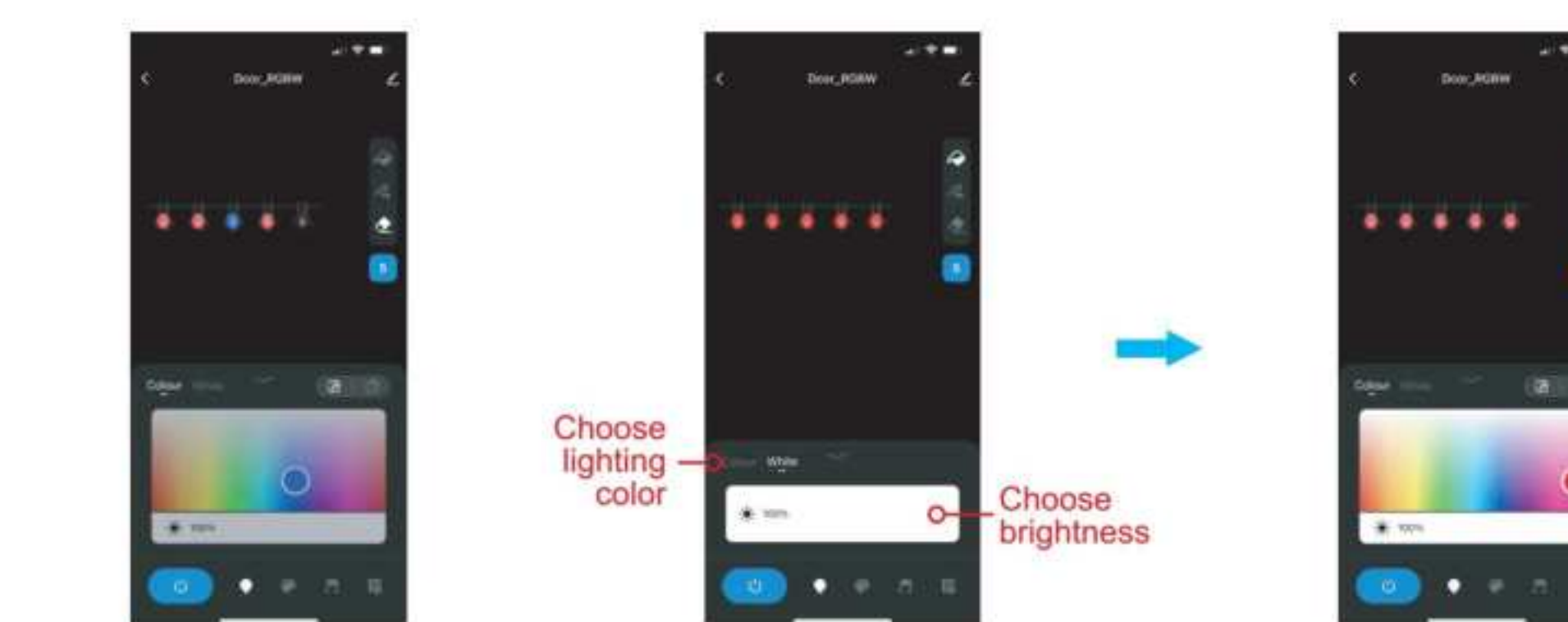
6



### HOW TO OPERATE THE APP



- Set the number of bulbs. Here you need to set it to "5", then tap "Confirm".
- Tap "↻" and then the color palette below to change the color of the 5 lights at the same time.
- Tap "⌵", then tap the color palette, and then tap one of the 5 lights to change its color individually.

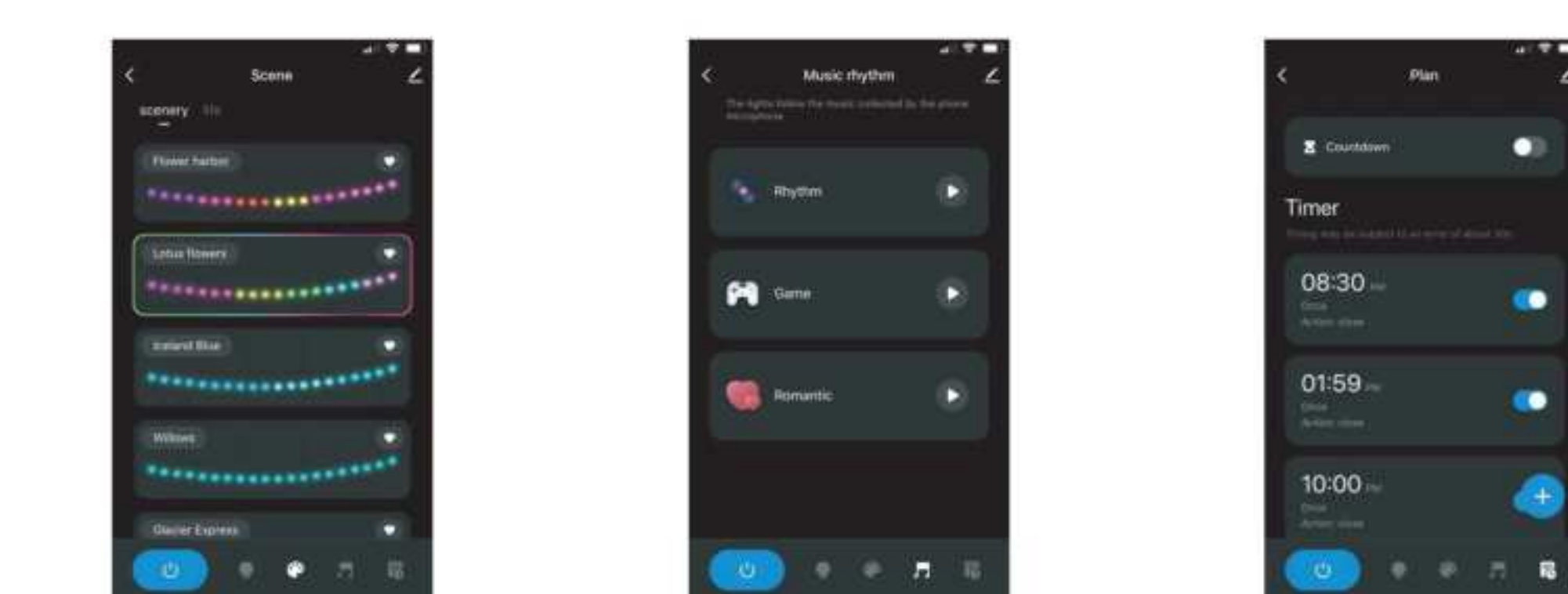


- Tap "⬆" and then one of the 5 lights, this light will be turned off individually.
- Here you can choose the color of the light - RGB or white - and adjust the brightness.
- Choose lighting color
- Choose brightness
- Choose color temperature

7



### HOW TO OPERATE THE APP



- Here you can choose different lighting modes.
- Here you can choose the sound/voice control mode.
- Here you can set schedules for the light or apply other functions.

### HOW TO CONNECT WITH ALEXA AND THE GOOGLE ASSISTANT APP



- Tap "Me", find the third-party sound device you want to connect to and tap it, then follow the steps to connect.

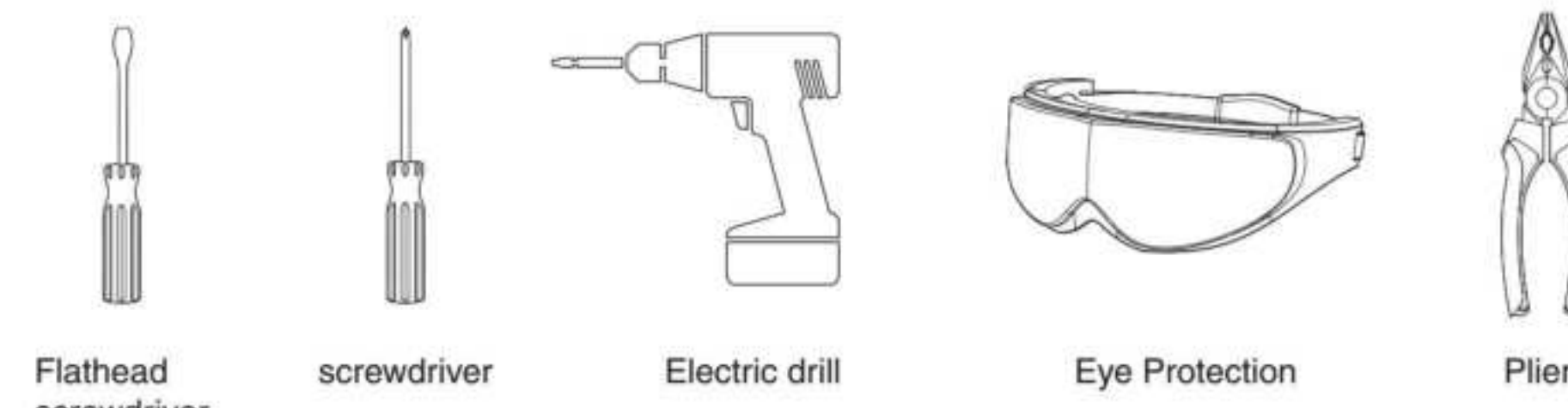
8



### PREPARATION

Check all components for damage, do not use the product if it is damaged.  
Estimated Assembly Time: 10-30 minutes

#### TOOLS REQUIRED (not included)



#### WARNING:

**THIS PRODUCT MUST BE INSTALLED IN ACCORDANCE WITH THE APPLICABLE INSTALLATION CODE BY A PERSON FAMILIAR WITH THE CONSTRUCTION AND OPERATION OF THE PRODUCT AND THE HAZARDS INVOLVED.**  
**RISK OF SHOCK - BEFORE BEGINNING INSTALLATION, TURN OFF ELECTRICITY AT THE CIRCUIT BREAKER BOX OR THE MAIN FUSE BOX.**

#### CAUTION:

**PLEASE MAKE SURE YOUR WALL SWITCH AND POWER AT MAIN CIRCUIT BREAKER BOTH ARE OFF.**  
**IF IN DOUBT ABOUT ELECTRICAL INSTALLATION, CONSULT A LICENSED ELECTRICIAN.**

**WARNING: INSTALLING THIS LIGHT IN AN UNGROUNDED ELECTRICAL SYSTEM MAY CAUSE THE METAL PARTS OF THE LIGHT TO CARRY CURRENT IF ANY WIRES OR WIRE CONNECTIONS ARE DAMAGED OR LOOSE. IN THIS CASE, ANYONE WHO TOUCHES THE LIGHT WILL RECEIVE AN ELECTRIC SHOCK, RESULTING IN INJURY OR DEATH.**

**BE CAREFUL NOT TO DAMAGE OR CUT THE WIRE INSULATION (COVERING) DURING INSTALLATION. DO NOT LET THE WIRES TOUCH ANY SHARP EDGES.**

9

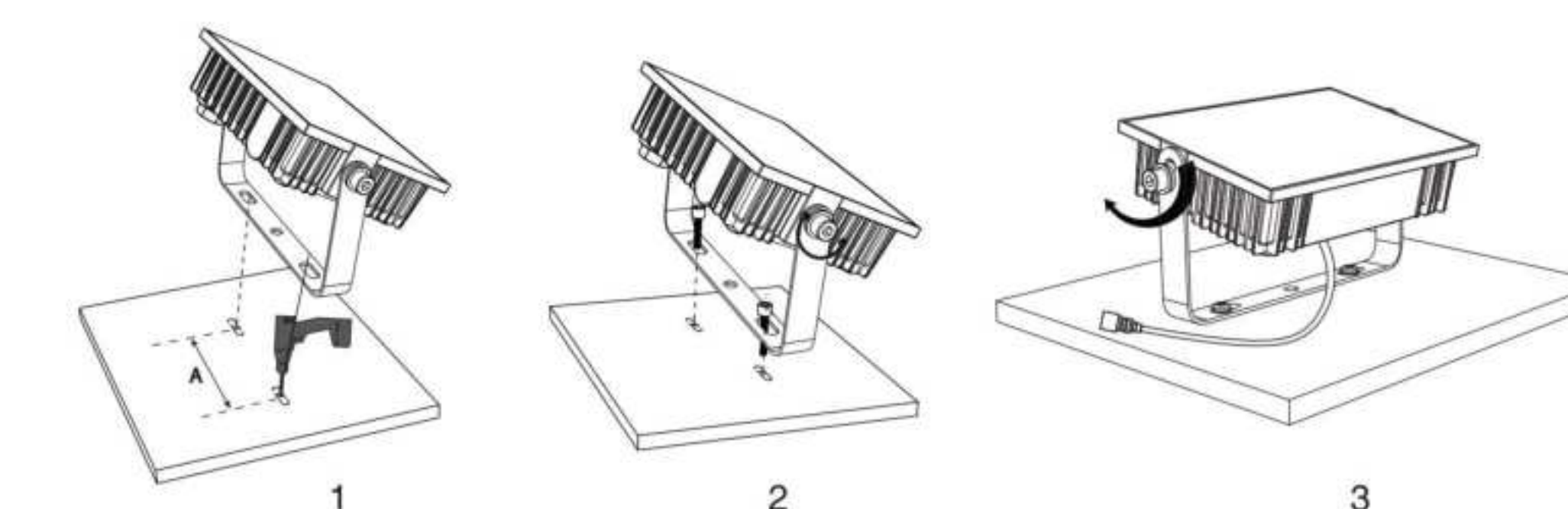


### INSTALLATION STEPS

#### A. Ground Installation

1. Connect the ground stake to each light.
2. Install the lights on the ground and adjust them to your desired angle.
3. Plug the adapter into the power supply.

#### B. Bracket Installation



- STEP 1:**  
According to the spacing (see the "A" part of the picture) of two screw bits on the LED Light bracket, drill two mounting holes.
- STEP 2:**  
Put the bracket onto the prepared mounting holes and then screw it on.
- STEP 3:**  
Adjust the beam direction as you like, and then plug the adapter into the power supply.

11



#### FCC ID: 2A3W8H05HCW

#### FCC Warning:

Any Changes or modifications not expressly approved by the party responsible for compliance could void the user's authority to operate the equipment.  
This device complies with part 15 of the FCC Rules. Operation is subject to the following two conditions:

- (1) This device may not cause harmful interference, and
- (2) this device must accept any interference received, including interference that may cause undesired operation.

Note: This equipment has been tested and found to comply with the limits for a Class B digital device, pursuant to part 15 of the FCC Rules. These limits are designed to provide reasonable protection against harmful interference in a residential installation. This equipment generates uses and can radiate radio frequency energy and, if not installed and used in accordance with the instructions, may cause harmful interference to radio communications. However, there is no guarantee that interference will not occur in a particular installation. If this equipment does cause harmful interference to radio or television reception, which can be determined by turning the equipment off and on, the user is encouraged to try to correct the interference by one or more of the following measures:

- Reorient or relocate the receiving antenna.
  - Increase the separation between the equipment and receiver.
  - Connect the equipment into an outlet on a circuit different from that to which the receiver is connected.
  - Consult the dealer or an experienced radio/TV technician for help.
- This equipment complies with FCC radiation exposure limits set forth for an uncontrolled environment. This equipment should be installed and operated with minimum distance 20cm between the radiator & your body.

11



Manufacturer / Hersteller:  
Shen Zhen Shi Meng Zhi Tuo Ke Ji You Xian Gong Si  
Address: qian wan yi lu 1 hao A dong 201 shi qian hai shen gang he zuo qu Shen Zhen, Guang Dong, 518000, CN  
support@onforuled.com www.onforuleds.com

**[EU REP]** MDH LIGHTING LTD  
Suite 302, 292 Strovolos Avenue, 2048 Strovolos  
Nicosia, Cyprus | support@onforuled.com

**[UK REP]** MDH LIGHTING LTD  
69 Aberdeen Avenue, Cambridge CB2 8DL,  
United Kingdom | support@onforuled.com

Made in China

