



YOLINK
YoLink SpeakerHub
 YS1604-UC
 Set-up & User Guide
 Rev 1.0
 January 20, 2022

Table of Contents

PART	TOPIC	PAGE
A	Thank you!	1
B	Introduction	2
C	Before You Begin	4
D	What's in the Box?	5
E	Get to Know Your SpeakerHub	6
F	Install the YoLink App	7
G	Open the App	8
H	Add Your SpeakerHub to the App	9
I	Power Up the SpeakerHub	11
J	Mobile Device Settings	12
K	Connect Hub to WiFi	14
L	Introduction to the App	22
M	SpeakerHub Device Settings	23
N	Advanced Settings	29
O	Firmware Updates	31
P	Factory Reset	32
Q	FCC Statement	33
R	CE Mark Warning	34
S	Warranty	35
T	Warning	35
U	Contact Us / Support	36

If your SpeakerHub is already online after using the QSG, please proceed to page 22

User Guide Conventions

To assure your satisfaction with your purchase, please read this user guide we have prepared just for you. The following icons are used to convey specific types of information:



Very important information (can save you time!)



Good to know info but may not apply to you



Troubleshooting tips



Mostly unimportant (it's ok to breeze past it!)

A Thank you!

Thank you for purchasing YoLink products!

Whether you are adding additional hubs to expand your system's range or if this is your first YoLink system, we appreciate you trusting YoLink for your smart home & automation needs. Your **100%** satisfaction is our goal. If you experience any problems with your installation, with our products or if you have any questions that this manual does not answer, please contact us right away. See the Contact Us section for more info.

Thank you!

Eric, Queenie, John, Clair, James
Customer Support Team

B

Introduction

YoLink Hubs are the gateway to the internet for your YoLink devices. As opposed to many smart home systems, the individual devices are *not* on your network or WiFi and are not directly connected to the internet. Instead, your devices communicate with the Hub, which connects to the internet, the cloud server and the app.

Your SpeakerHub can only connect to the internet via a **2.4 GHz** band provided by your WiFi network (5 GHz band is not supported at this time). Like most IoT and home automation devices, your SpeakerHub connects only to the 2.4 GHz WiFi band. Nearly all residential WiFi routers have a 5 *and* a 2.4 GHz band. But your router may or may not display SSIDs for *both* bands or they may both have the *same name*. If you know which SSID is your 2.4 GHz band, this is the one your Hub will connect to.

With some exceptions, your router and the SpeakerHub will connect automatically via 2.4 GHz. Some routers may attempt to connect your Hub to 5 GHz. Additional support may be needed, for example, changing your router settings.



"5 GHz" should not be confused with "5G" cell phone service



Multi-step authentication networks, such as hotels and airports, are not compatible!

B Introduction, Continued

Your system may have more than one Hub, due to the number of devices (one Hub can support at least 300 devices), and/or the physical size of your home or building(s) and/or property. YoLink's unique LoRa®-based long-range/low-power system offers industry-leading range - up to 1/4 mile reach, open air!

You can have multiple hubs. If you already have our original Hub, you do not have to replace it, if it is functional. Additional hubs will only expand the coverage area of your YoLink system.

C Before You Begin

Find a suitable place for your SpeakerHub to live. SpeakerHub wants to be indoors, clean and dry.

SpeakerHub is not designed for wall-mounting.

Place your SpeakerHub at a location where you can hear the speaker clearly, at a moderate volume level.

Avoid placing your SpeakerHub inside a cabinet, or on or near metal or sources of radio or electromagnetic energy or interference, such as radio transmitters, as well as other WiFi equipment.

Do not place your SpeakerHub on or near sources of heat or intense direct sunlight, such as a space heater.

An outlet will be required for the power adapter for your SpeakerHub. Ensure it can have a dedicated outlet; it will not work if it is unplugged; SpeakerHub does *not* have an internal battery.



Do not allow your SpeakerHub to get wet
... or eat after midnight

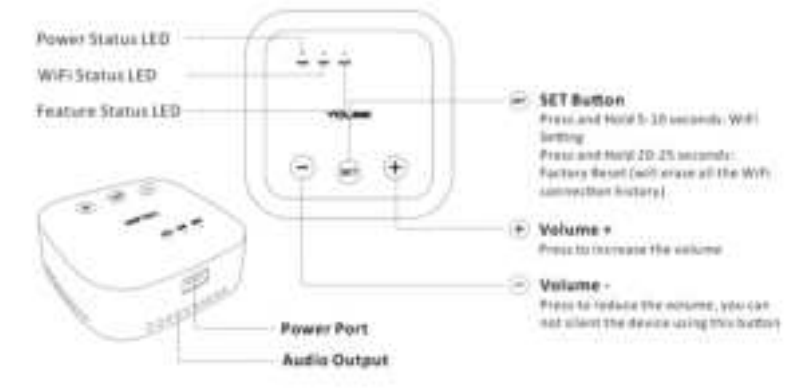
D What's in the Box?

- A. SpeakerHub
- B. USB Cable ("Micro B")
- C. AC Adapter / Power Supply
- D. Quick Start Guide



E Get to Know Your SpeakerHub

Please take a moment to familiarize yourself with your new SpeakerHub, in particular the LED behaviors and SET button functions.



LED Behavior explanations



F**Install the YoLink App****1**

If you are new to YoLink, please install the app on your phone or tablet, if you have not already. Otherwise, please proceed to part H.

2

Scan the appropriate QR code below or find the “YoLink app” on the appropriate app store.



Apple phone/tablet
iOS 9.0 or higher



Android phone/tablet
4.4 or higher

3

Open the app and tap **Sign up for an account**. You will be required to provide a username and a password.

Follow the instructions, to set up a new account



If you encounter an error message attempting to create an account, disconnect your phone from WiFi, and try again, connected only to the cellular network



Retain your username and password in a secure location

G**Open the App****1**

You will immediately receive an email from no-reply@yosmart.com with some helpful information. Please mark the yosmart.com domain as safe, to ensure you receive important messages in the future.

2

Log in to the app using your new username and password

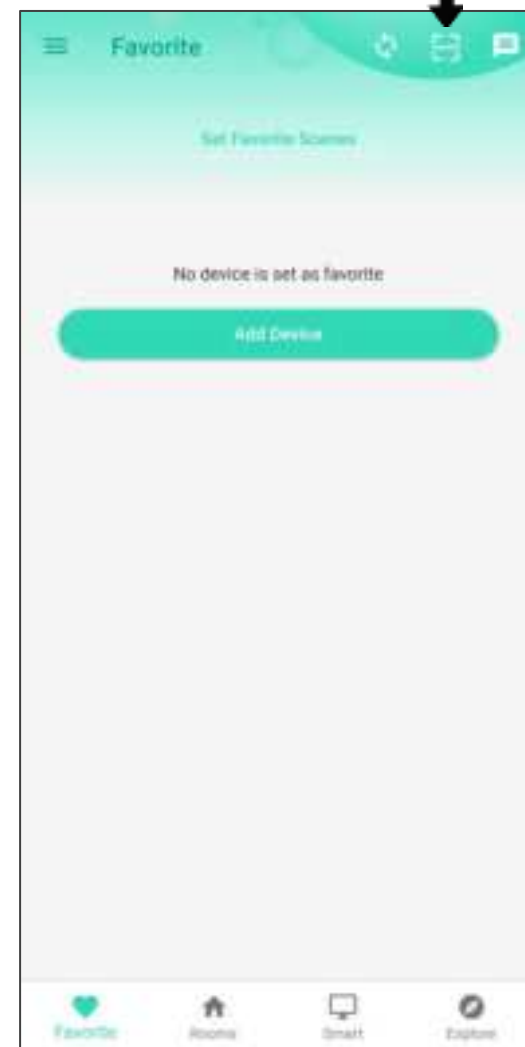
3

The app opens to the **Favorite** screen, as shown. This is where your favorite devices will be shown. You can organize your devices by room, in the Rooms screen, later.

4

Tap **Add Device** (if shown) or tap the scanner icon

Scanner icon

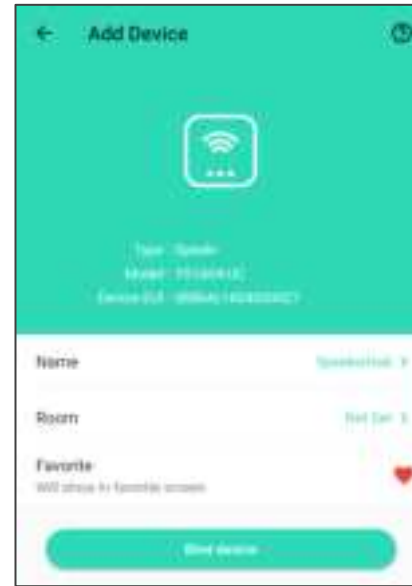


Add Your SpeakerHub to the App

- 1 Approve access to your phone's camera, if requested.) A viewfinder will be shown on the app.



- 2 Hold the phone over the QR code (on the underside of the hub) so that the code appears in the viewfinder. If successful, the **Add Device** screen will be displayed

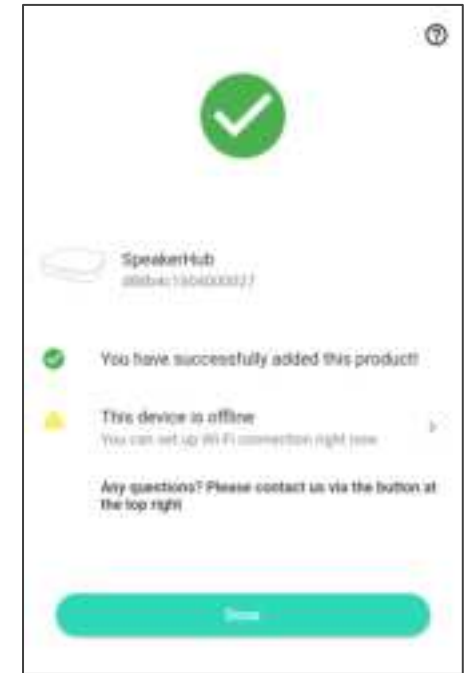


3

You can change the device name and assign it to a room later. Ensure that the Favorite icon is selected as shown (red heart). Tap **Bind device**

4

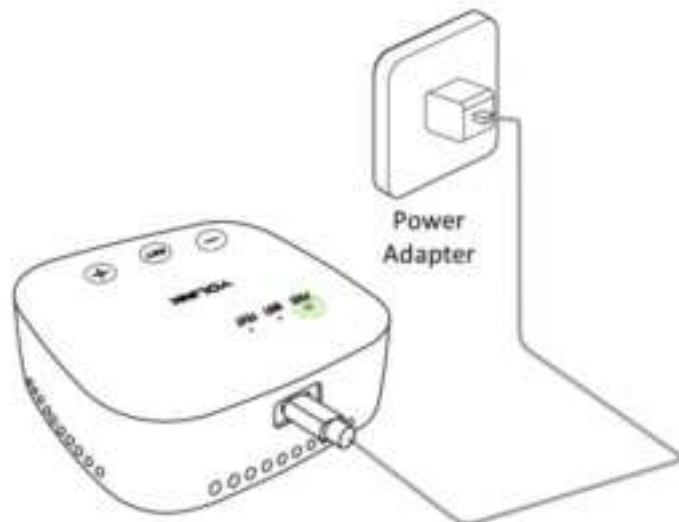
If successful, the screen will appear as shown. Tap **Done** (do not tap “set up WiFi connection” at this time)



I Power up the SpeakerHub

Connect the supplied USB cable to the hub and to the power adapter as shown.

- 1 Plug in the adapter. Observe the green power (PWR) LED is blinking



J Mobile Device Settings

- 1 iOS phones only: if prompted, enable Local Network Access. Search “iOS location services” for more information

- 2 Enable Location Services on your phone

iOS:   

Go to Settings, tap Privacy, tap Location Services

Ensure **Location Services** is on/enabled.

Scroll down to and tap the **YoLink** app

Select **While Using the App**

Enable **Precise Location**

Android:  

Go to **Settings**, tap **Location**.

Ensure Location is On.

Tap **App Permissions**. Scroll down to and tap the YoLink app, then set permission to

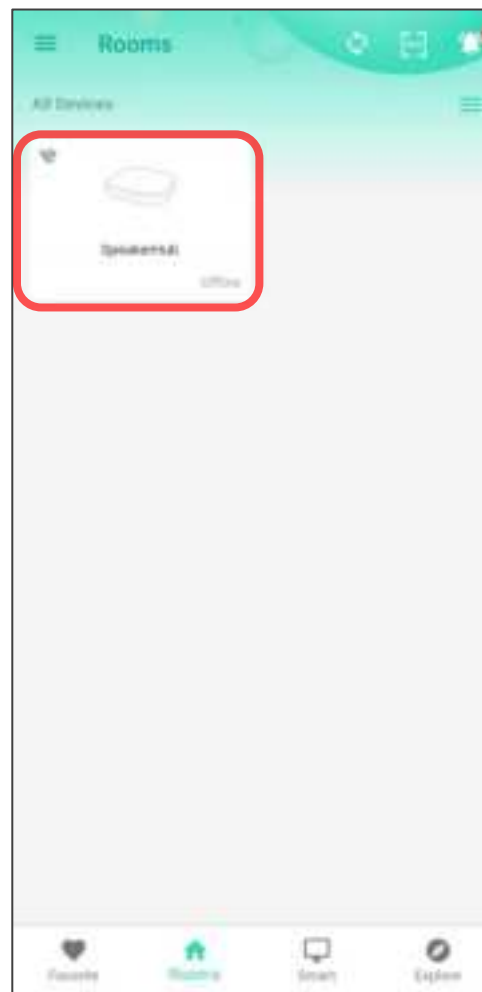
Allowed Only While in Use

J Mobile Device Settings, Continued

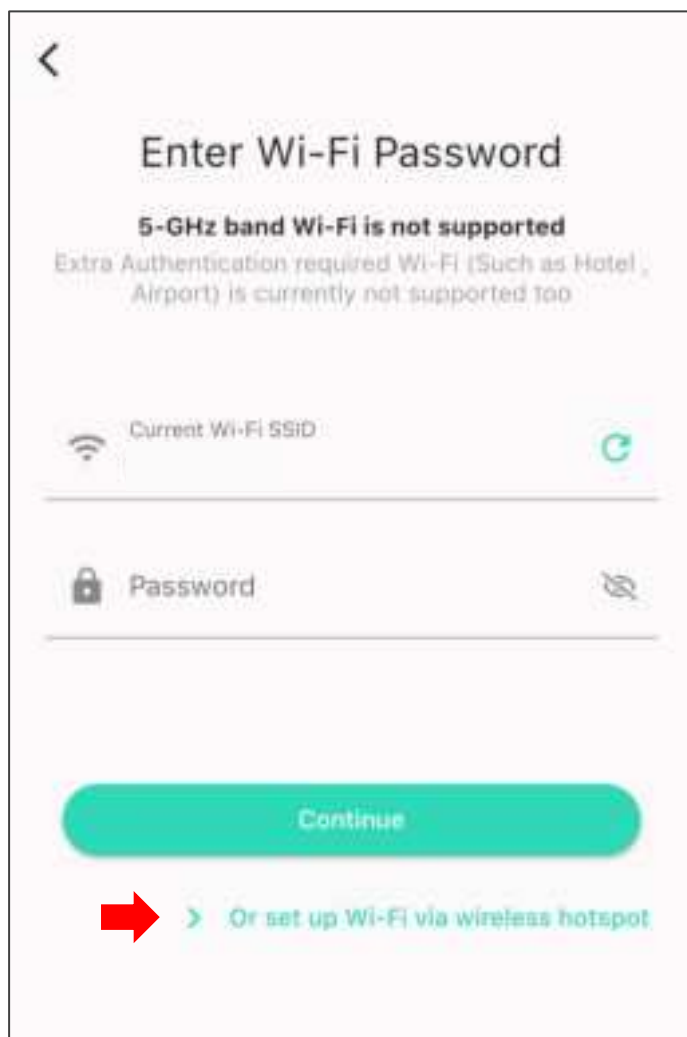
- 1 In your phone, open WiFi settings (Settings, WiFi)
- 2 Identify your 2.4 GHz network, if possible. If there is only one SSID (network ID) you recognize, you will use that one
- 3 Select the appropriate network and log-in, if needed
- 4 If your SSID is hidden, you must manually log into it on your phone, by selecting "Other..." in Other Networks or Choose a Network

K Connect Hub to WiFi

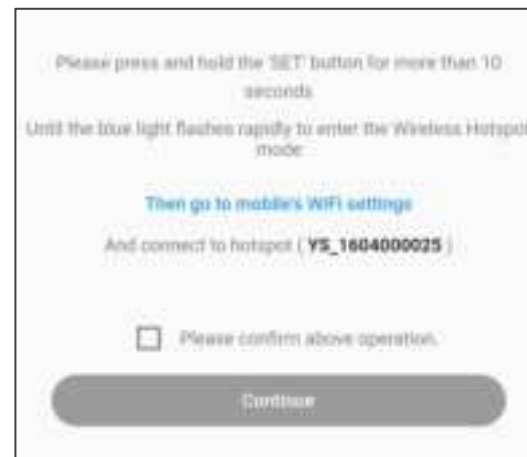
- 1 From the Rooms or Favorites screen, tap on the SpeakerHub icon, as shown in the left figure
- 2 Tap on the WiFi icon as shown on the right figure



- 3 Do not change SSID and password at this time.
Tap **Set up WiFi via wireless hotspot**



- 4 The **Set WiFi** screen appears as shown.




Please review the instructions on the screen. After pressing the SET button the SpeakerHub, you will then log into the SpeakerHub's hotspot. This will need to be done with no delays between steps, otherwise the Hub will exit AP pairing mode.

- 5 As directed in the app, press the hub's SET button for **more than 10 seconds** or until the WiFi LED flashes rapidly. (The LED will start flashing *slowly* at around 5 seconds; keep pressing)

- 6 Go to your phone's WiFi settings and log into the SpeakerHub hotspot. The hotspot can be identified by the number that starts with "YS_1604"

K Connect Hub to WiFi, Continued

 If there is a pop-up message on your phone, noting this network connection does not have internet access, please approve the connection. Approve “once” or “this time only” if desired. (This is only a temporary connection)

7 Return to the app. Check the “Please confirm the above operation” checkbox

8 Tap **Continue**

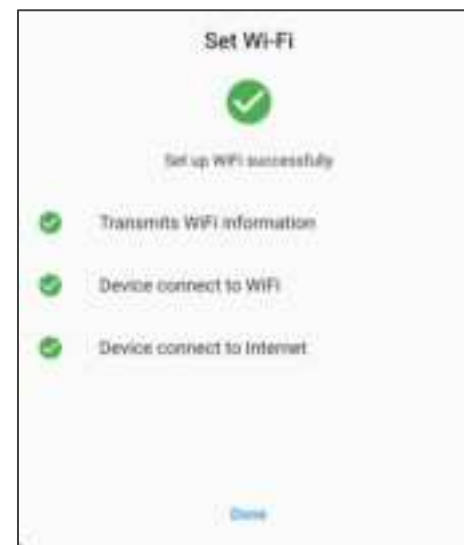
The **WiFi Password Setting** screen appears as shown



9 In the **Choose a WiFi** box, please select or enter your 2.4 GHz SSID (unless it is hidden, it should appear in the list, when you tap in this area). Enter your WiFi password, then tap **Continue**

K Connect Hub to WiFi, Continued

10 The “**Set up WiFi successfully**” message should appear on the screen as shown. Tap **Done**



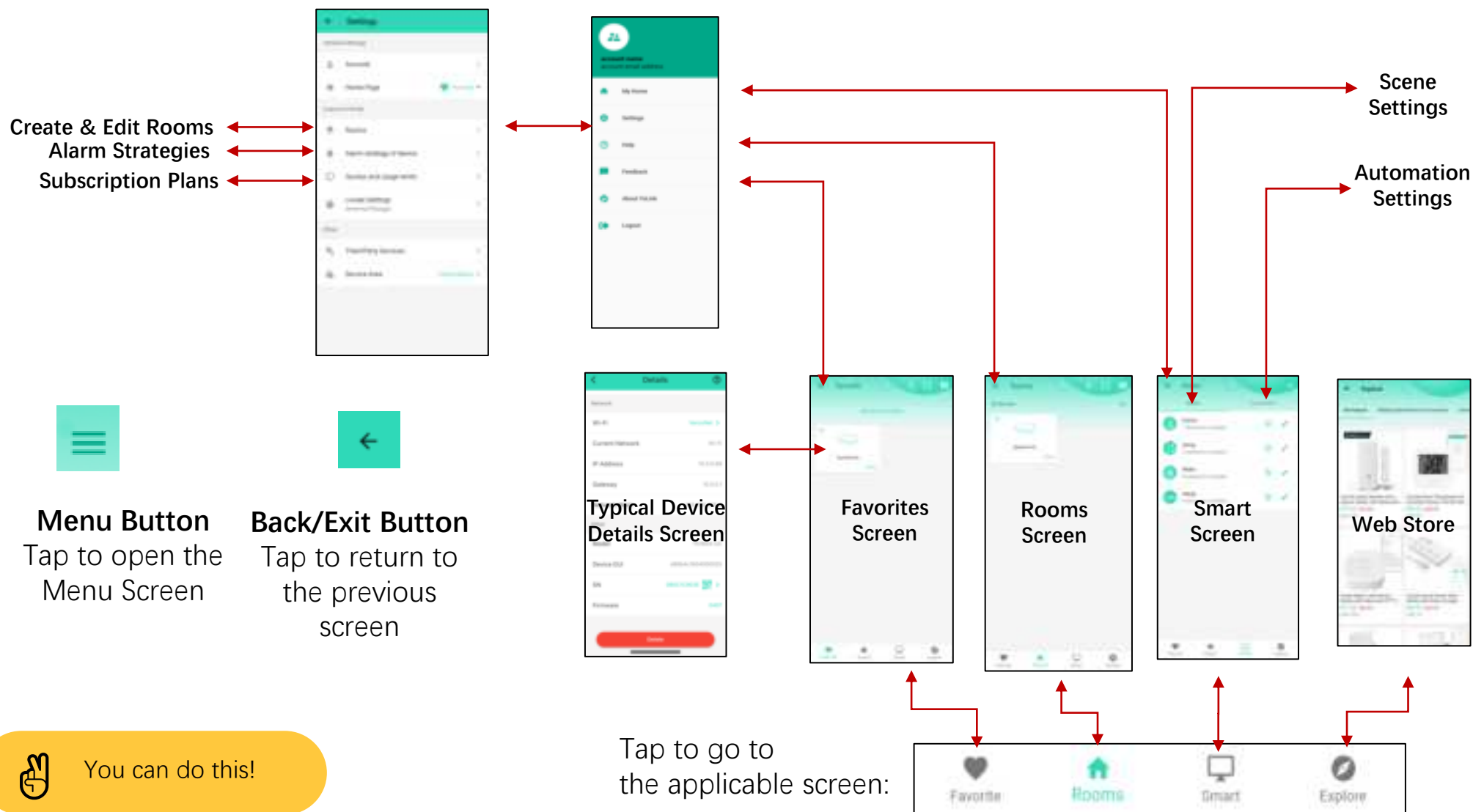
11 The SpeakerHub’s blue internet status LED should be on, indicating an internet connection is established

12 Your SpeakerHub may appear offline. Tap the Refresh icon or swipe down on the screen to refresh the screen

If your SpeakerHub indicates Online as shown, you can proceed to part L

L Introduction to the YoLink App

You may have a very simple system, with just one smart plug, or you may have dozens of devices, encompassing power & lighting, leak detection and automatic shut-off, smart garage and intrusion detection, each with their own settings, like arming and disarming the security system. The YoLink app is powerful and able to handle either application easily, but this **does** mean there are numerous settings to be configured, and therefore you should make yourself familiar with the app before jumping right into changing settings. Here is a simplified block diagram of the app, showing the most commonly-used parts of the app:



1

From the **Rooms** screen, tap the SpeakerHub icon. Please review the image before tapping the three dots (“more”) icon.



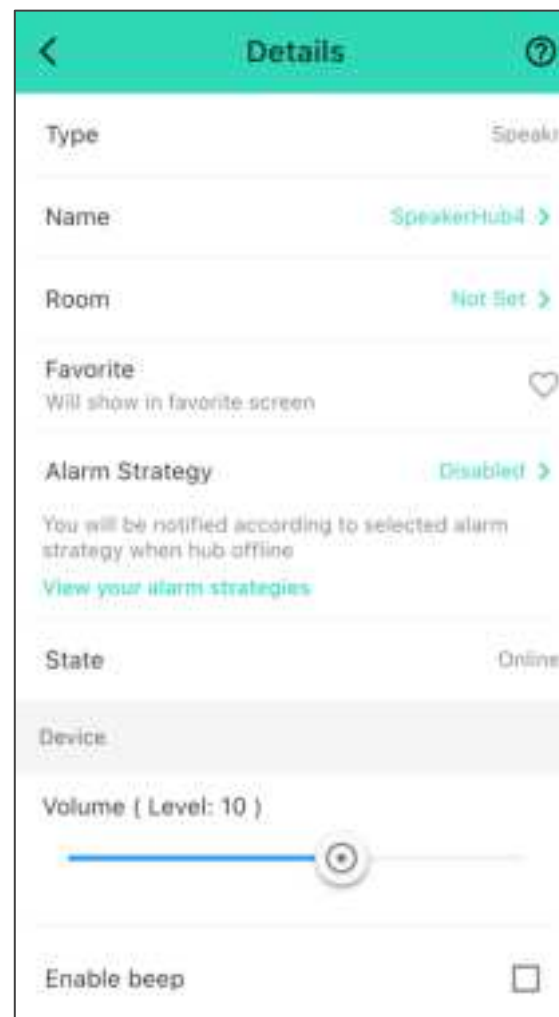
Tap to view or edit device settings

Tap to disable the speaker

Tap to create a manual speaker broadcast

2

Please review the summary of the SpeakerHub device details screen before proceeding to the next step.



Device type

Device name

Device room

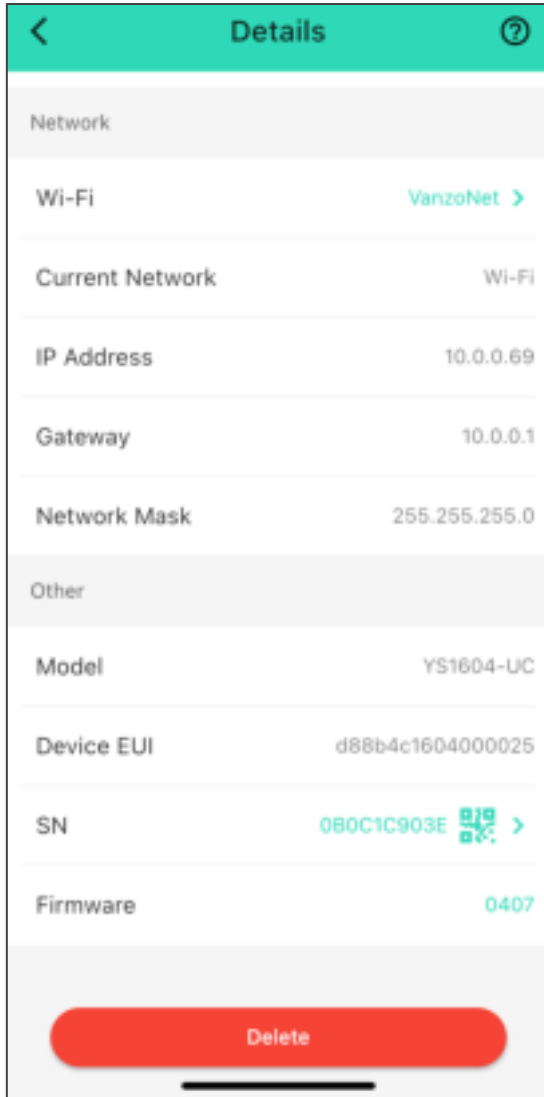
Favorite icon (select to add the device to your Favorites screen)

Alarm strategy for this device

Device online/offline state

Speaker volume level (1 minimum, 16 max.)

Enable speaker beep (enables feedback beep as well as other device sounds, such as start-up sound)



◀ Your WiFi network name

IP Address info

◀ Device model number

◀ Device EUI (ID) number

◀ Device serial number

◀ Device firmware version
(see part P)

◀ Tap to delete the device
from your account

Your SpeakerHub can broadcast a message via the following methods:

- Manually, from the device screen
- Automatically per your **Alarm Strategy** settings
- As part of a **scene**, triggered from a strategy, manually triggered by the user in the app, manually triggered by an **AlarmFob** or **FlexFob** activation
- As part of an **automation**, triggered by a device changing state or by schedule

The easiest way to start using your SpeakerHub is with it configured as a “trigger action” of an alarm strategy. An alarm strategy is just a fancy name for the checklist of things you want to happen when one of your devices alerts. As an example of an alert, when a leak sensor detects water. And as an example of a checklist: send me a text message and activate the SpeakerHub.

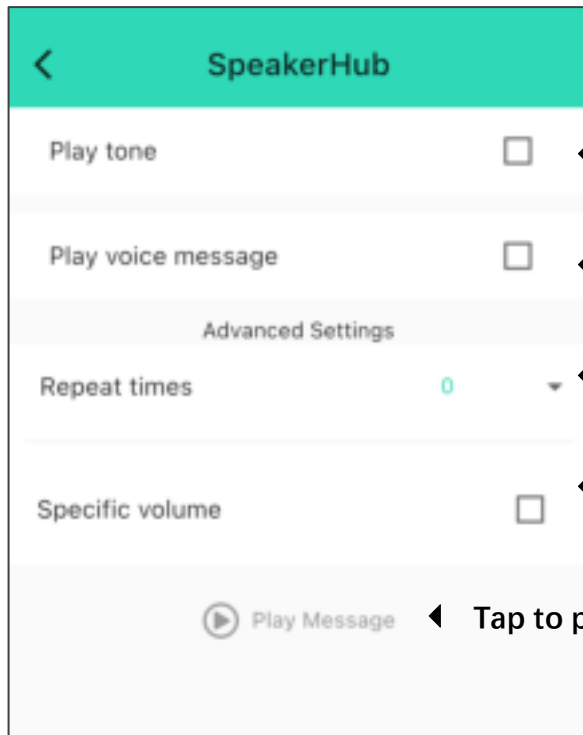
The easiest way to familiarize yourself with SpeakerHub’s audio capabilities is to manually broadcast a message directly from the **Device** screen.



Do not panic if half of these terms are Greek to you. We will get you bilingual soon enough!

Tap the back arrow to return to the main SpeakerHub screen shown in step 1. Tap the “play” icon (triangle)

This screen is used to create a one-time broadcast over the SpeakerHub. It is also good for testing your messages before adding them to a scene or automation.



Check this box if you want a sound played before your spoken message

Check this box for the voice message settings

You can repeat the message up to 3 times

Check this box to set a specific volume level

Tap to play your custom message

“Play Tone” include a **Notification Tones** and a **Customer Source** sub-list of tones and sounds. **Customer Source** includes customer-supplied audio files. Audio file uploading is not available at the date of user guide publication (this feature will be added soon). Additional Customer Source audio files have been factory-installed in the SpeakerHub.

Type your desired spoken message into the Message box. You can test your message by tapping the **Play Message** button. Some words may not be pronounced as desired. Phonetically spelling the word may help.

Here is an example message:

Tone: Customer Source: ARPEGGIO.MP3

Message: Garage door one is still open

Your SpeakerHub & Alarm Strategies:

It is very easy to add the SpeakerHub to an existing strategy and to add it to a new default strategy, in the same way that you would add a Siren Alarm. The SpeakerHub will then automatically read off your alert messages as they occur.

Alarm Strategies are beyond the scope of this user guide to cover well. Please familiarize yourself with automations and alarm strategies by attending several of our free online instructional sessions at YoLink Academy on YouTube, by clicking the link or scanning the QR code below. Look for these sessions:

Automation 101: The Basics

Automation 101: Intro to Alarm Strategies

SpeakerHub Tutorials Series



YoLink Academy
On YouTube



<https://www.youtube.com/c/YoLinkbyYoSmart>

Your SpeakerHub & Scenes & Automations:

Automations are a big part of the appeal of smart home products, for example, water valves turning off the main water line when a leak is detected.

Scenes are simply an automation that is typically triggered (activated) manually, by you. An example is a scene that checks if the doors are closed and locked as part of a bedtime routine.

Both scenes and automations can play your pre-determined messages. For example, when you activate the “arm-away” scene, SpeakerHub can say “system is in armed-away mode.”

If needed, familiarize yourself with scenes and automations by attending YoLink Academy using the link to the left. Look for these sessions:

Automation 101: The Basics

Automation 101: Day & Night Scenes

Your YoLink products are constantly being improved, with new features added. It is periodically necessary to make changes to your device's firmware. For optimal performance of your system, and to give you access to all available features for your devices, these firmware updates should be installed when they become available

In the Detail screen of each device, at the bottom, you will see the Firmware section, as shown in the image below. A firmware update is available for your device if it says “#### ready now”

Tap in this area to start the update

The device will update automatically, indicating progress by percentage complete. You may use your device during the update, as the update is performed “in the background”. The FEAT (feature) indicating light will slowly blink red during the update, and the update may continue for several minutes beyond the light turning off

Factory reset will erase device settings and restore it to factory defaults. Doing a factory reset will remove the device from your account and it will not harm the device and will lose any data or require you to re-do your automations, etc.



Only deleting a device from the app will remove it from your account

Instructions:

Hold the SET button down for 20-25 seconds until the FEAT (feature) LED blinks red. Release the button as soon as it blinks red, as holding the button longer than 25 seconds will **abort** the factory reset operation.

Factory reset will be complete when the status light stops blinking



This device complies with part 15 of the FCC Rules. Operation is subject to the following two conditions: (1) this device may not cause harmful interference, and (2) this device must accept any interference received, including interference that may cause undesired operation.

Any changes or modifications not expressly approved by the party responsible for compliance could void the user's authority to operate the equipment.

NOTE: This equipment has been tested and found to comply with the limits for a Class B digital device, pursuant to Part 15 of the FCC Rules. These limits are designed to provide reasonable protection against harmful interference in a residential installation. This equipment generates, uses and can radiate radio frequency energy and, if not installed and used in accordance with the instructions, may cause harmful interference to radio communications. However, there is no guarantee that interference will not occur in a particular installation.

If this equipment does cause harmful interference to radio or television reception, which can be determined by turning the equipment off and on, the user is encouraged to try to correct the interference by one or more of the following measures:

- Reorient or relocate the receiving antenna.
- Increase the separation between the equipment and receiver.
- Connect the equipment into an outlet on a circuit different from that to which the receiver is connected.
- Consult the dealer or an experienced radio/TV technician for help.

To maintain compliance with FCC's RF Exposure guidelines, This equipment should be installed and operated with minimum distance between 20cm the radiator your body: Use only the supplied antenna.

PRODUCT NAME:	RESPONSIBLE PARTY:	TELEPHONE:
YOLINK SPEAKERHUB	YOSMART, INC.	(949) 825-5958

MODEL NUMBER:	ADDRESS:	EMAIL:
YS1604, YS1604-EA	15375 BARRANCA PKWY SUITE G-105, IRVINE, CA 92618 USA	SERVICE@YOSMART.COM



The host manufacturer has the responsibility that the host device should be compliance with all essential requirement of RER. This restriction will be applied in all member states. The simplified UK declaration of conformity referred shall be provided as follows: Hereby, YoSmart Inc. declare that the radio equipment type YoLink SpeakerHub is in compliance with Directive UK Radio Equipment Regulations (SI 2017/1206); UK Electrical Equipment (Safety) Regulation (SI 2016/1101); and UK Electromagnetic Compatibility Regulations (SI 2016/1091).

PRODUCT NAME:	RESPONSIBLE PARTY:	TELEPHONE:
YOLINK SPEAKERHUB	YOSMART, INC.	(949) 825-5958

MODEL NUMBER:	ADDRESS:	EMAIL:
YS1604, YS1604-EA	15375 BARRANCA PKWY SUITE G-105, IRVINE, CA 92618 USA	SERVICE@YOSMART.COM

S 2-Year Limited Electrical Warranty

YoSmart warrants to the original residential user of this product that it will be free from defects in materials and workmanship, under normal use, for 2 years from the date of purchase. User must provide a copy of original purchase receipt. This warranty does not cover abuse or misused products or products used in commercial applications. This warranty does not apply to YoLink devices that have been improperly installed, modified, put to a use other than designed, or subjected to acts of God (such as floods, lightning, earthquakes, etc.). This warranty is limited to repair or replacement of the YoLink device only at YoSmart's sole discretion. YoSmart will NOT be liable for the cost of installing, removing, nor reinstalling this product, nor direct, indirect, or consequential damages to persons or property resulting from the use of this product. This warranty only covers the cost of replacement parts or replacement units, it does not cover shipping & handling fees. Please contact us, to implement this warranty (see Customer Support, below, for contact information)

T Warnings

Power the Hub with the provided adapter, only

The hub is designed and intended for indoor use and is not waterproof. Install indoors, avoiding subjecting the Hub to water or damp conditions

Do not install the hub inside or near metals, ferromagnetism or any other environment which may interface with the signal

Do not install the Hub near flames/fire or expose to high temperatures

Please do not use strong chemicals or cleaning agents to clean the hub. Please use a clean, dry cloth to wipe the hub to avoid dust and other foreign elements entering the Hub and affecting the operation of the Hub

Avoid allowing the hub to be exposed to strong impacts or vibration, which may damage the device, causing malfunctions or failure

U Contact Us / Customer Support

We are here for you, if you ever need any assistance installing, setting up or using a YoLink app or product!

Please email us 24/7 at service@yosmart.com

You can use our online chat service by visiting our website, www.yosmart.com or by scanning the QR code

You can also find additional support and ways to contact us at: www.yosmart.com/support-and-service or scanning the QR code below



Support & Service



Online Chat

Finally, if you have any feedback or suggestions for us, please email us a feedback@yosmart.com

Thank you for trusting YoLink!

Eric Vanzo
Customer Experience Manager



15375 Barranca Parkway, Suite G-105 | Irvine, California USA