



Payrange Blukey Modem Antenna Info

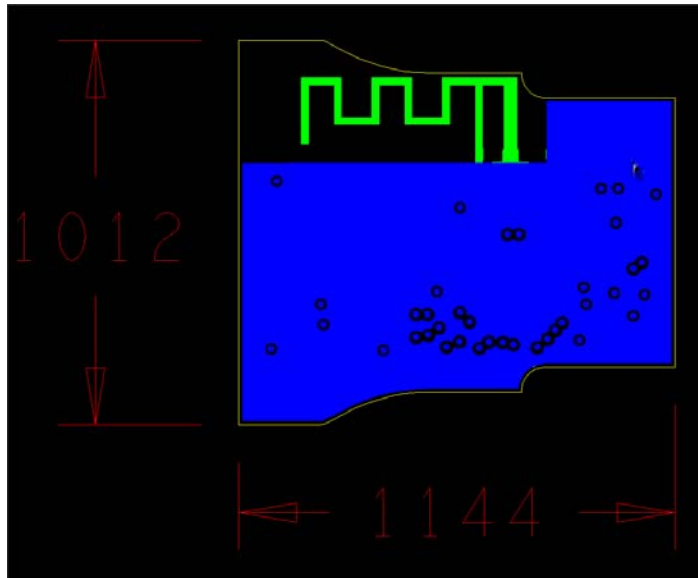
Requirements

1. A list of antennas to be used with the transmitter. Include manufacturer, model number, gain (dBi), and description (e.g. dipole, yagi, patch, etc.)

The transmitter is only allowed to be used with its built in internal antenna. The antenna is an "Inverted-F antenna" with $<+2\text{dBi}$ gain, and no model number.

2. Drawing or photograph unless clear photos appear in the external photos exhibit

The Antenna is depicted in green in this drawing. Dimensions are in $1/1000^{\text{th}}$ of an inch. Trace is on top layer in 1.7 mil copper, on 34.2 mil FR4 PCB.



3. For FCC Part 15 transmitters, describe compliance with FCC 15.203

The transmitter is in compliance as the antenna is not detachable or replaceable; it is an integral part of the Printed Circuit Board Assembly itself.