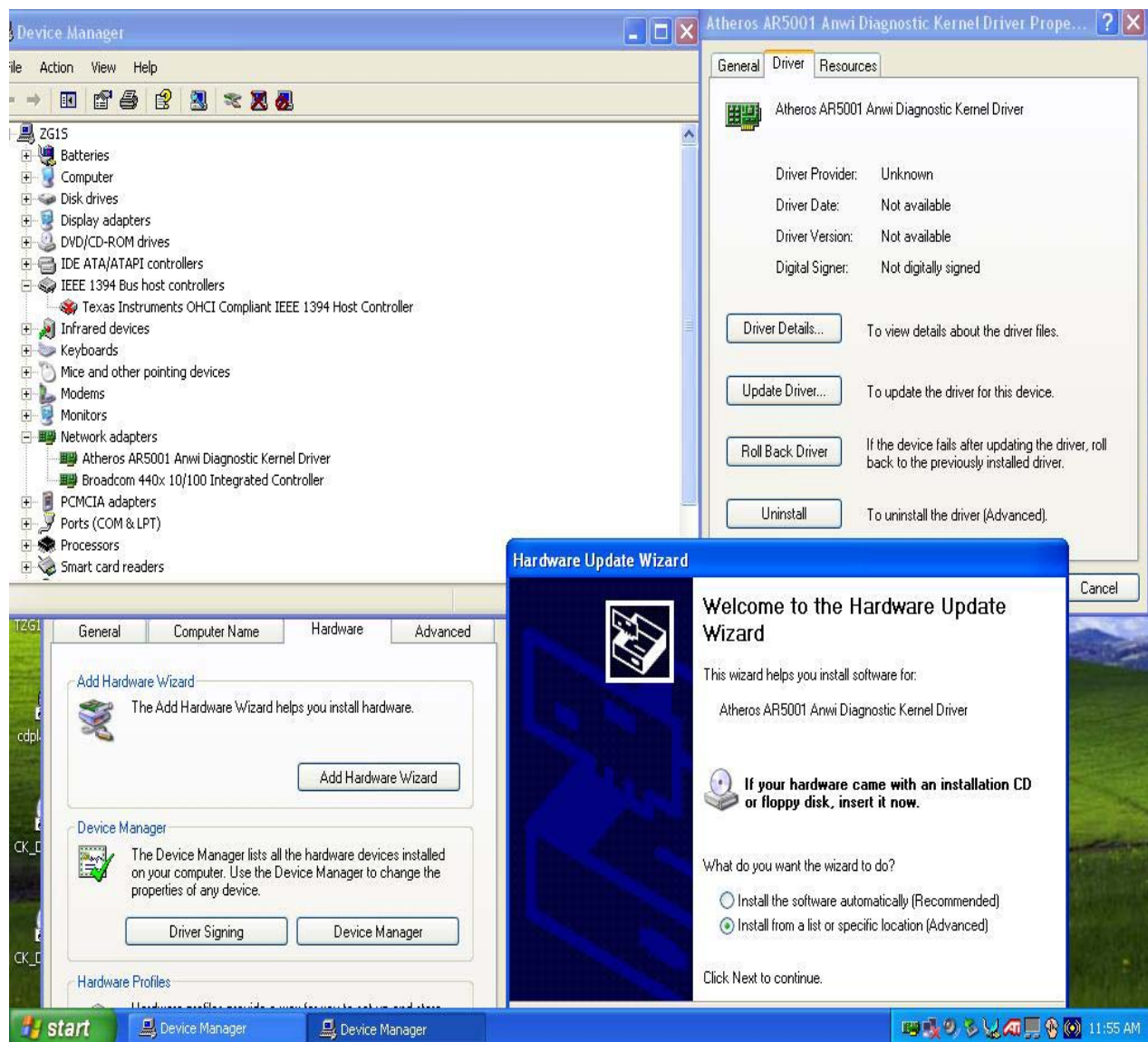
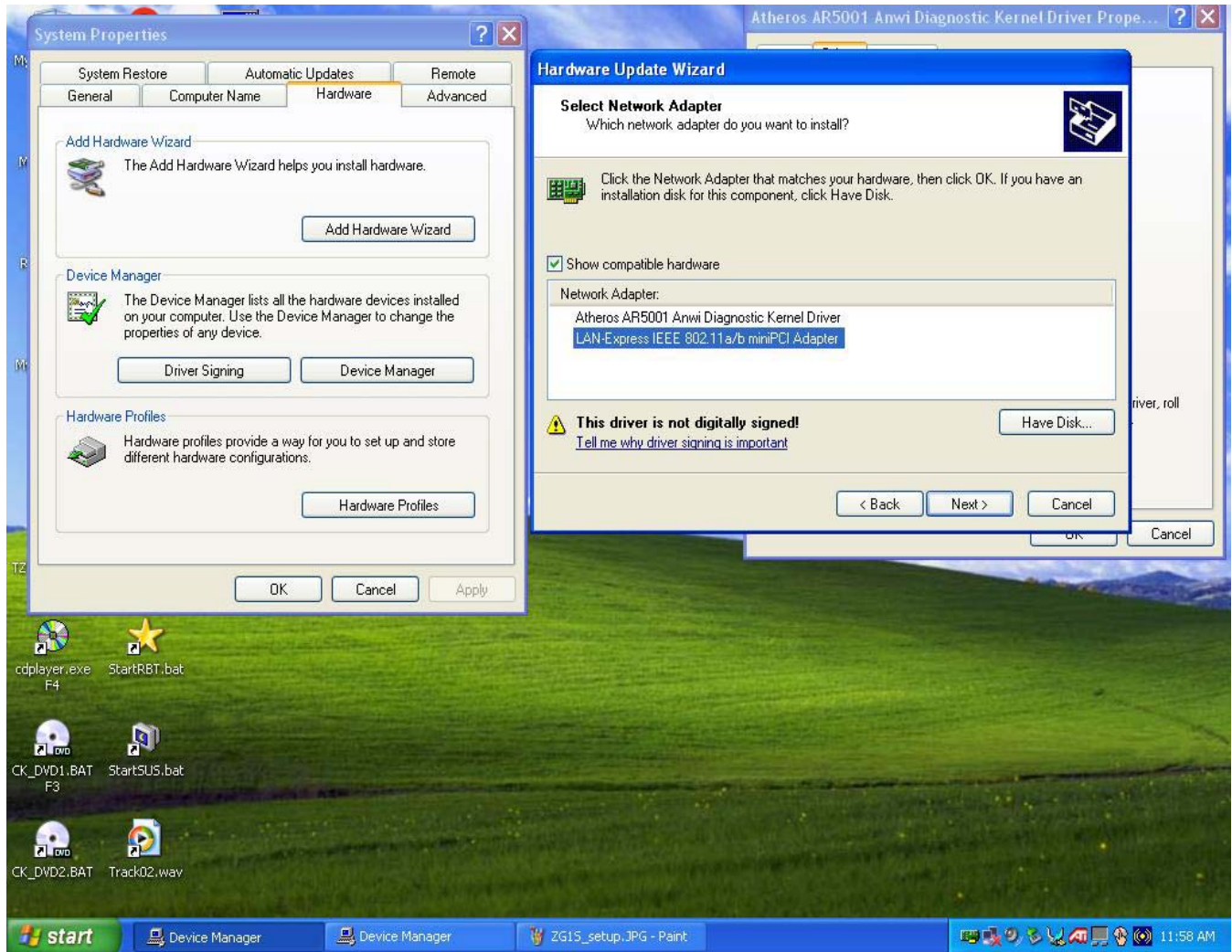


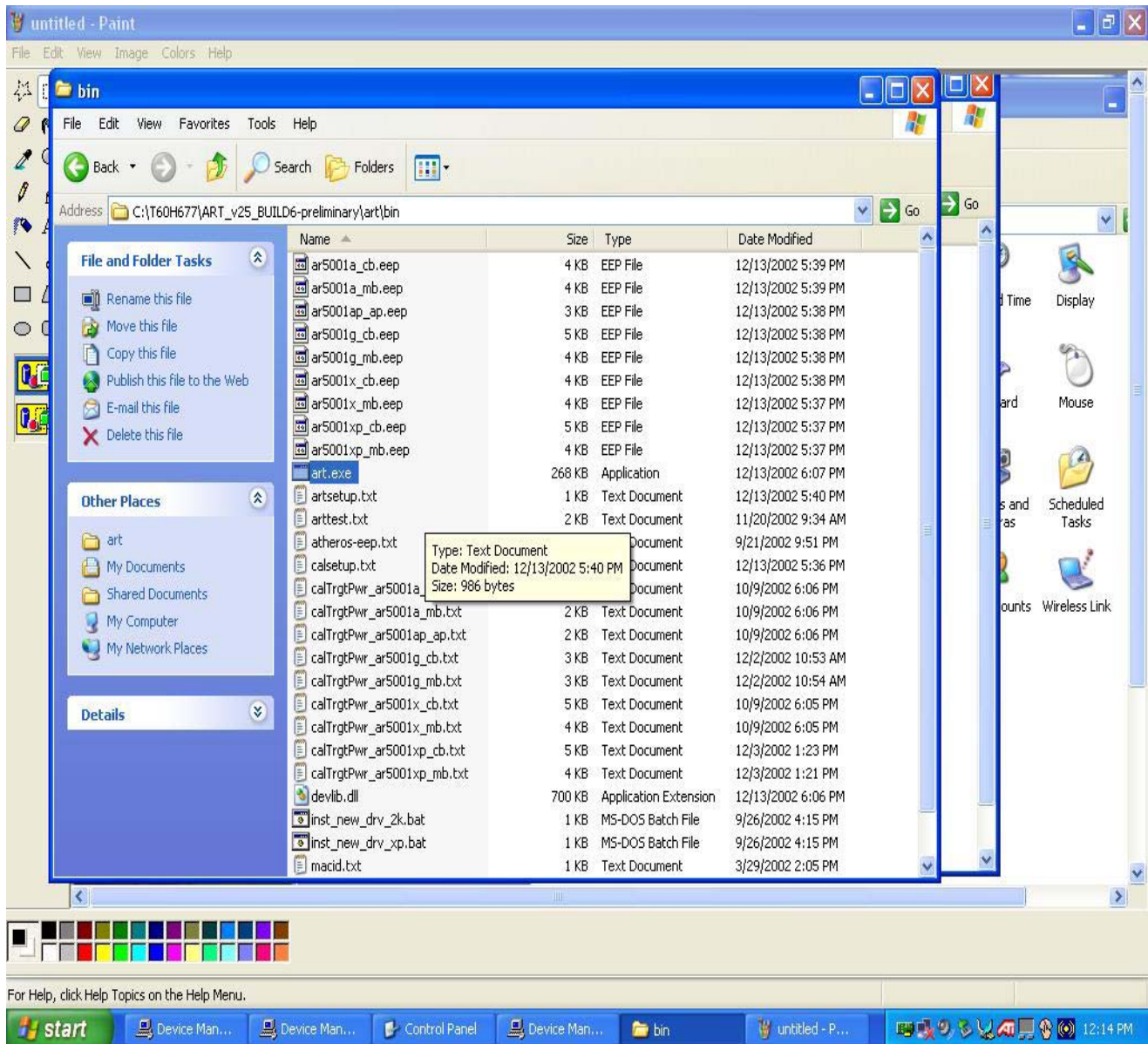
ZIIS computer setup and test procedure

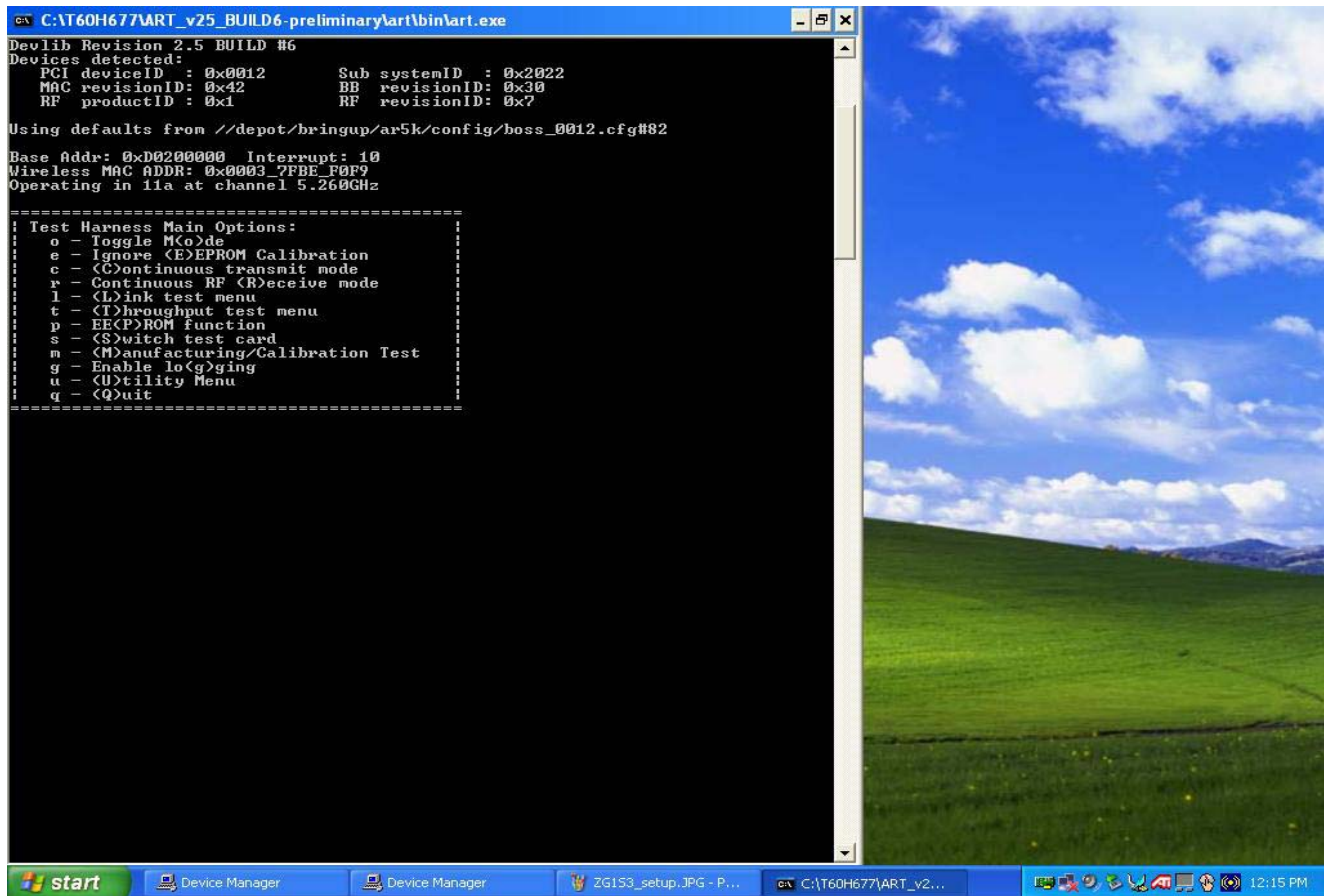
- 1) Bluetooth is situated inside the note book can not be accessed. Please do not try to open the notebook.
- 2) Mini pci card at back of the notebook, connect to j1 point for testing
- 3) The notebook is in test mode, unable to connect to access point or other PC, only used for testing by ART Test Program.
- 4) To change to operation mode will have to update driver
- 5) Control panel → system → hardware → device manager → atheros mdk (or 802.11a/b) → driver → update driver → install from a list or specific loaction → don't search I will choose driver to install → In the show compatible hardware should see * lan-express IEEE 802.11a/b mini pci adaptor





- 6) To go back to the test mode by the same method update driver but this time in the compatible hardware chose * Atheros AR5001 Anwi Diagnostic kernel driver”
- 7) under test mode start testing by execute `c:\driver\wireless lan\t60h677\art_v25_build_.... \art\bin\art.exe`

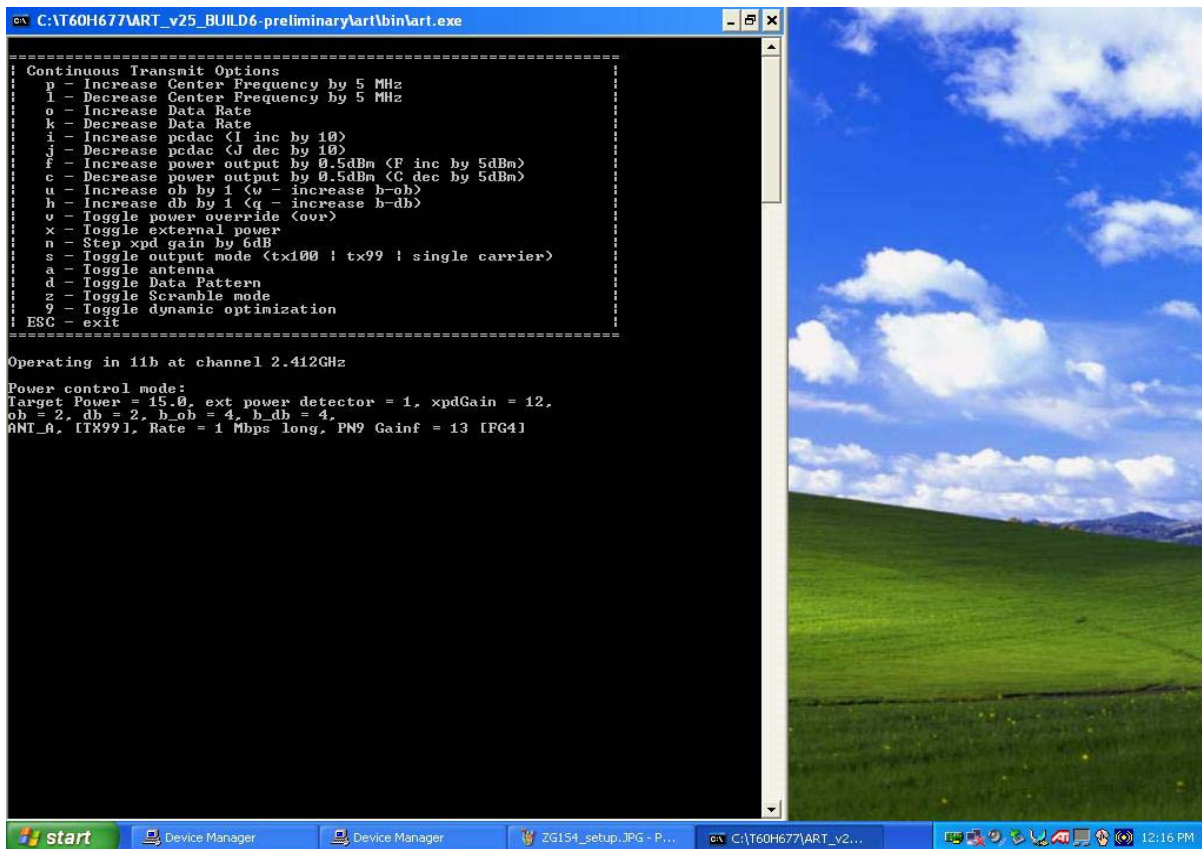




you will see a dos prompt used to test

“o” for changing from a\b\g

“c” for continious transmit then another dos prompt will be seen



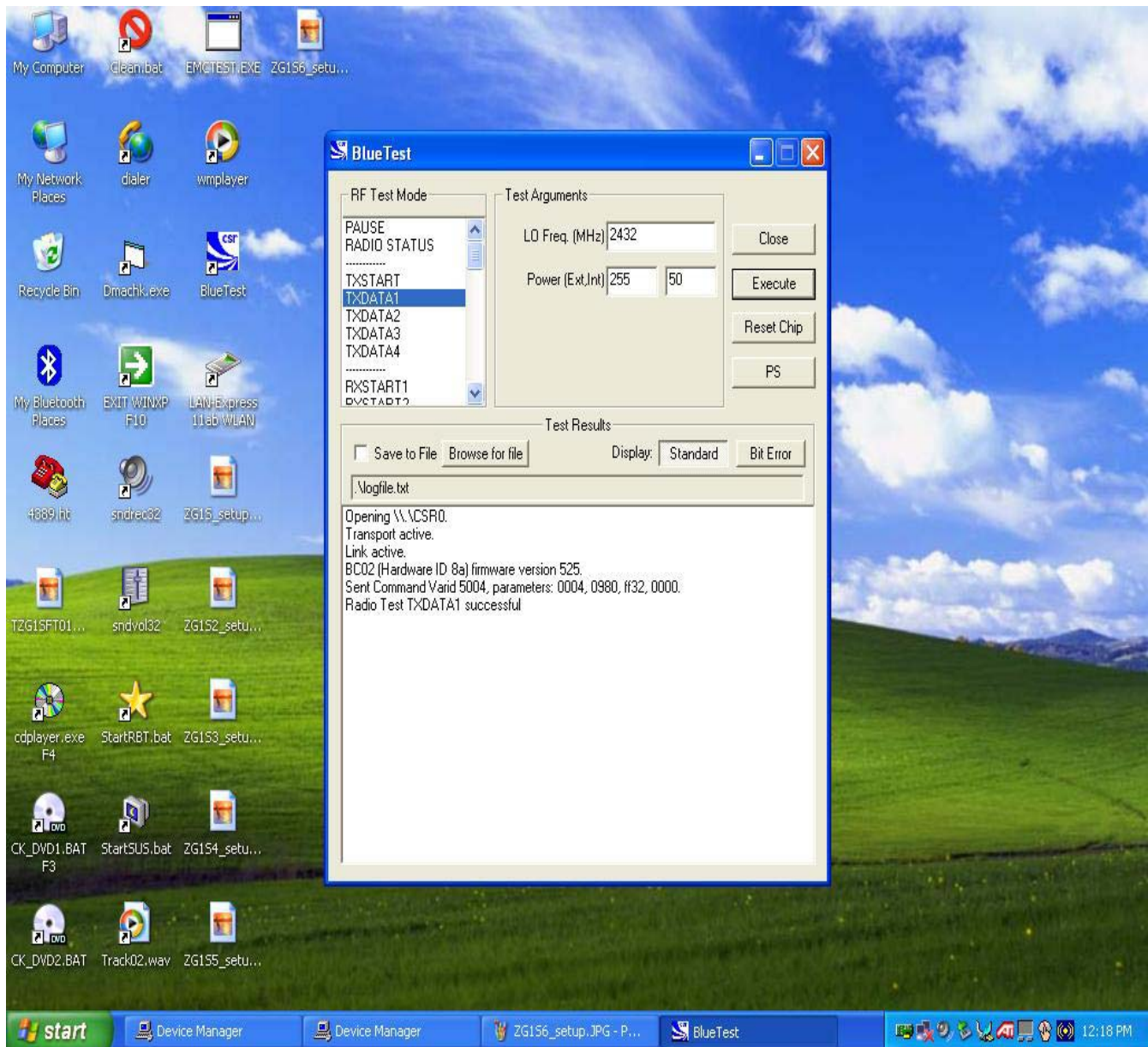
“s” for un modulated signal

Bluetooth test program

Click blue test



Make sure it is same as above diagram



chose TXData1 then chose the frequency you want to test. Then execute
for true CW signal use Txstart then chose frequency

Attn: there is 2 buttons on the side bottom panel for enable and disable bluetooth and wireless lan, please if
you can not transmit make sure the wireless is enabled by press button.