

## User manual Supplementary information

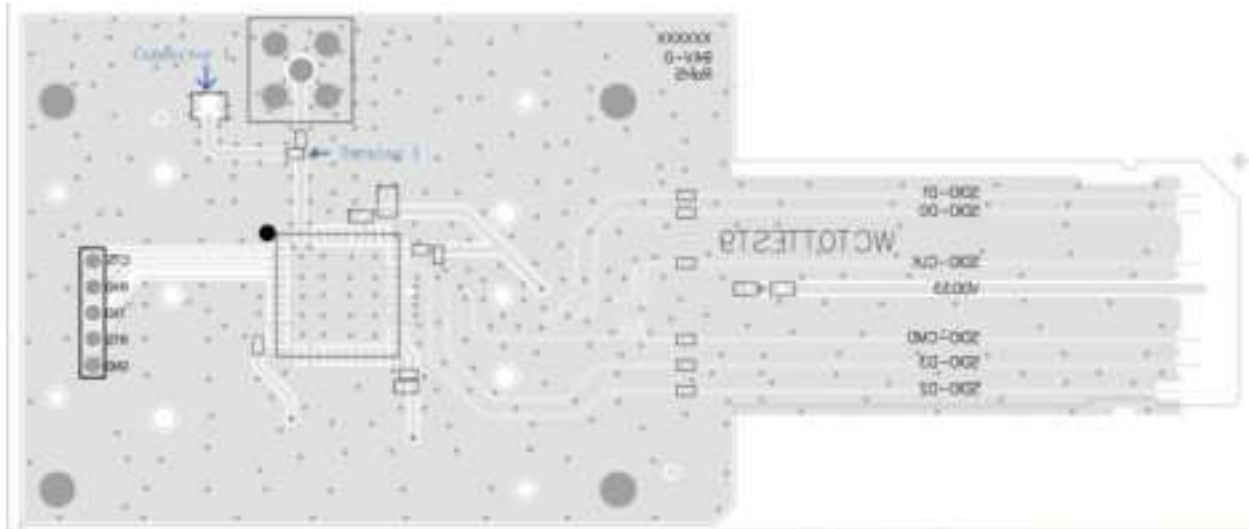
Product Name: WIFI+BT Module

Model number: WXT42J1001QF

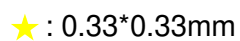
FCC ID:2AC23-WXT42QF

IC:12290A-WXT42QF

- a) Trace layout and dimensions including specific designs for each type:
1. Layout of trace design, parts, antenna, connectors, and isolation requirements:

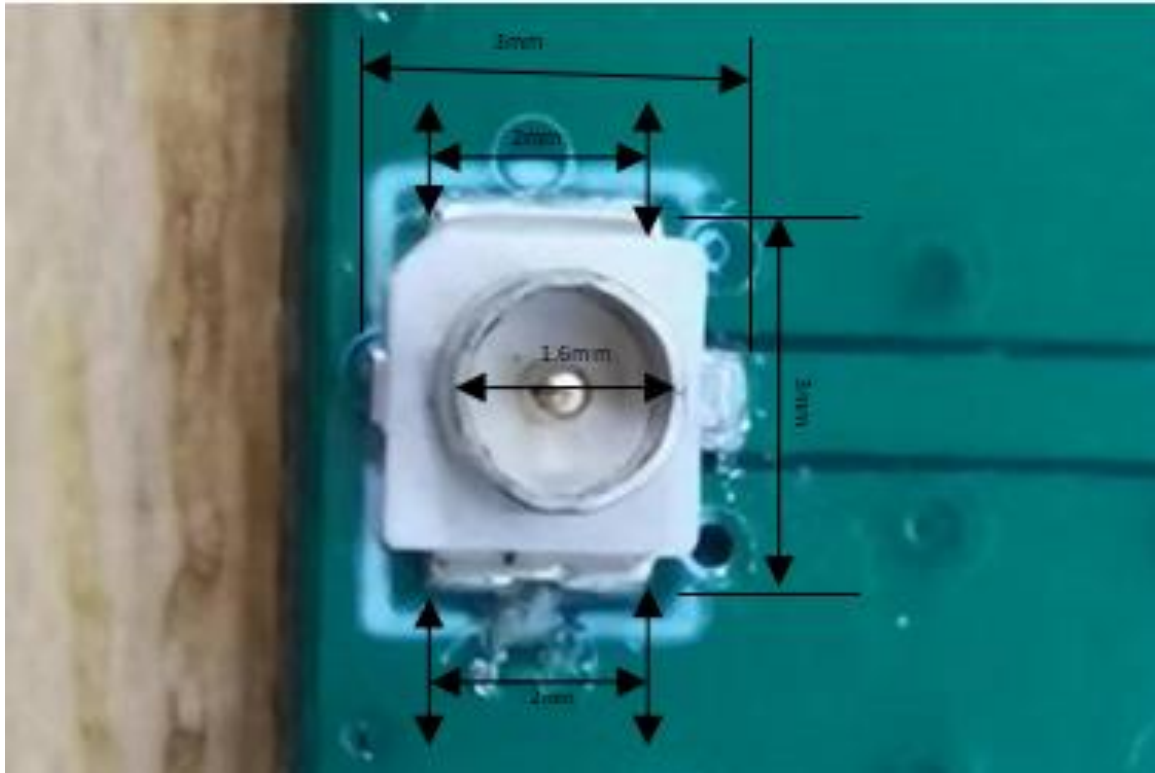


- PCB Antenna trace antenna Dimension:



Note: 1. RF trace between module RF pinout to antenna width is 0.8mm.  
2. RF trace between module and antenna impedance is 0ohm.

IPEX connector information:  
Size:



Connector 1	IPEX	Male pin	50Ω	Surface mount	varies
-------------	------	----------	-----	---------------	--------

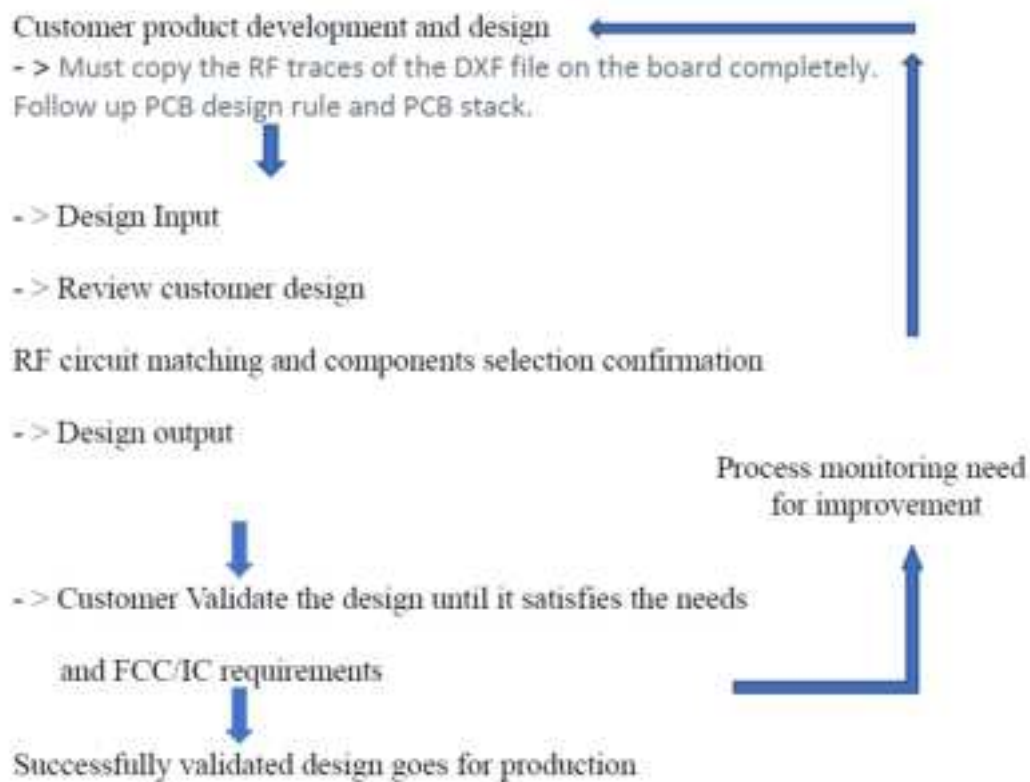
b) Appropriate parts of manufacturers and specifications:

Information about devices on RF lines:

Parts list	Parts number	Size	Manufacturer
Tuning 1/0Ω	/	0201	varies

If customers completely refer to our antenna design for their own design, the antenna performance should also be the same as ours.

C) Test procedures and design verifications:



d) Production test procedures for ensuring compliance

