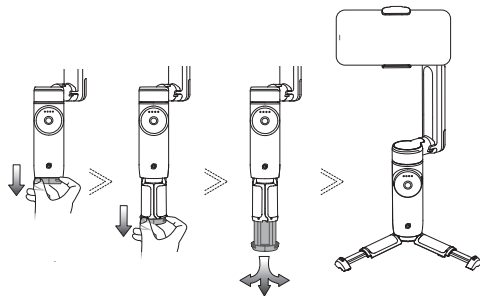
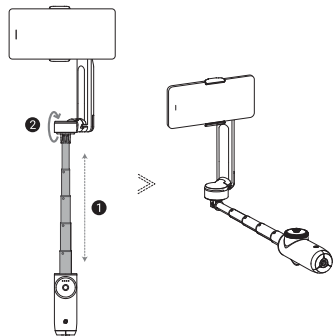


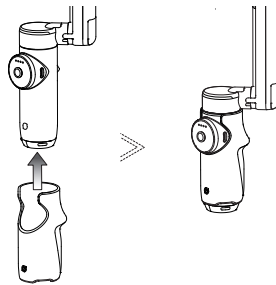
9



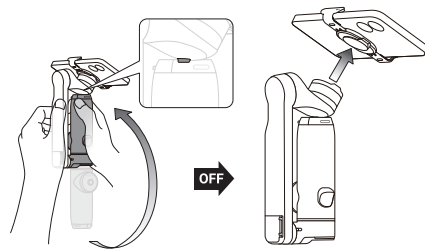
10



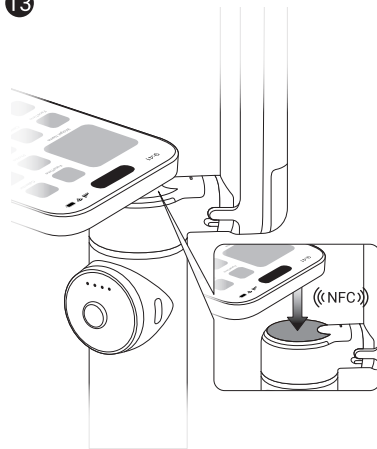
11



12



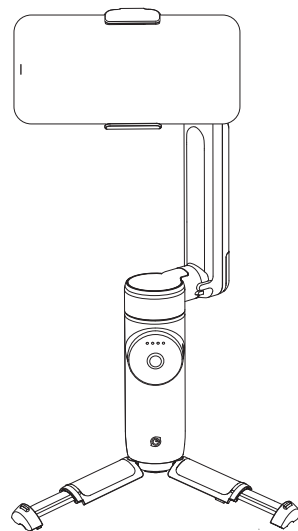
13



Insta360 Flow Pro

QUICKSTART GUIDE

快速入门指南

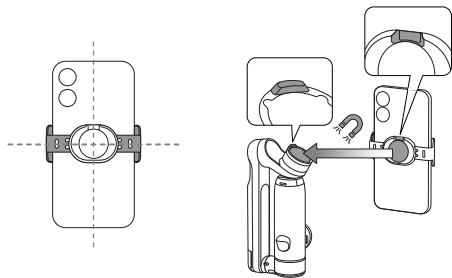


1

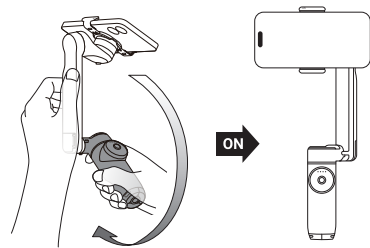


<https://www.insta360.com/guide/flowpro>

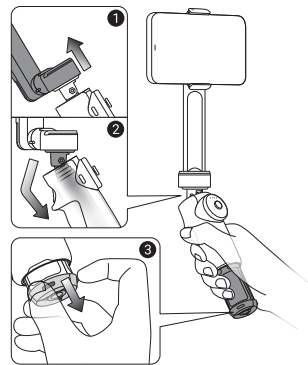
2



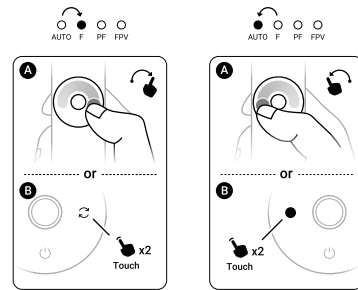
3



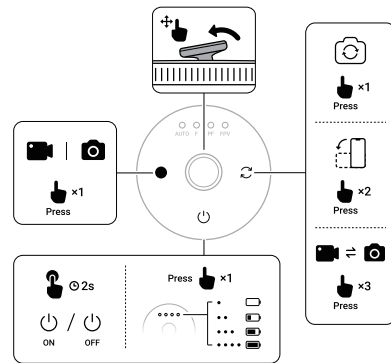
4



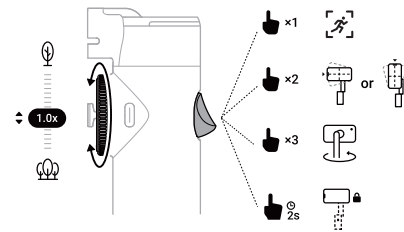
5



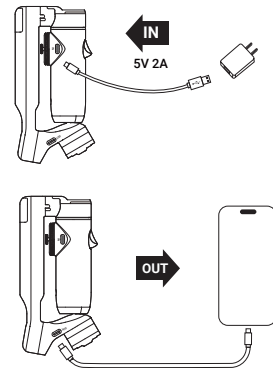
6



7



8



Insta360 Flow Pro

Safety Guidelines

安全概要

EN

Safety Information

* Disclaimer

Please read this Disclaimer carefully. Using this product means that you acknowledge and accept the terms of this disclaimer. By using this product, you hereby acknowledge and agree that you are solely responsible for your own conduct when using this product and any consequences thereof. You agree to use this product only for proper and lawful purposes. You understand and agree that Arashi Vision Inc. (hereinafter referred to as 'Insta360') accepts no liability for any and all misuse, consequences, damages, injuries, penalties, or any other legal responsibility directly or indirectly incurred by your using this product and associated accessories. Before every use, make sure that your accessories are functioning properly. If there's any damage or irregularity, stop using them immediately. Within the scope of state laws and regulations, Insta360 reserves the right of final explanation and revision for the commitment.

Warning

- ① The product should never come into contact with any kind of liquid. If the inside of the product comes into contact with water, chemical decomposition may occur, potentially resulting in a battery fire or explosion.
- ② The product should be used in temperatures from 14°F to 104°F (-10°C - 40°C).
- ③ Do not charge the battery immediately after use, as the battery temperature may be too high. Do not charge the battery until it cools down to near room temperature. Charging the battery in environments above 104°F may lead to battery expansion, leakage, overheating, or battery damage.
- ④ If the product is not used for a long time (e.g. 3 months or longer), the battery may be depleted. Please charge the product to turn it on.
- ⑤ Do not leave the product near heat sources such as a furnace or heater. Do not leave the product inside of a vehicle on hot days.
- ⑥ Do not drop or strike the product. Do not place heavy objects on the product.

Note

- ① Insta360 Flow Pro is not water resistant. Do not use it in rainy conditions or underwater. Do not use any liquid cleansers. Only use a soft dry cloth to clean the product.
- ② Ensure no obstructions are affecting the gimbal when Insta360 Flow Pro is powered on.
- ③ Intricate components inside Insta360 Flow Pro can be damaged when impacted and cause the gimbal to be damaged.
- ④ Keep Insta360 Flow Pro away from sand and dust to safeguard the product.
- ⑤ Insta360 Flow Pro contains magnets. Keep it away from pacemakers and other devices to avoid interference.
- ⑥ When a phone is on the Magnetic Phone Clamp, its NFC and wireless charging functions may be affected. Remove the clamp to recover these functions.
- ⑦ Ensure to align the marks on Flow Pro with the Magnetic Phone Clamp when attaching. Otherwise, the phone may fall off.
- ⑧ The Magnetic Phone Clamp attaches to Flow Pro through magnets. Do not move it too fast or make any sudden movements.
- ⑨ Deploy and use the tripod on flat ground without excessive wind, otherwise there is a risk of the gimbal tipping over.
- ⑩ After use, please collapse the extension rod and store the product safely.

Specifications

Name	Insta360 Flow Pro
Model	CINSCBBA
Input	5V / 2A
Output	5V / 1.2A
Bluetooth	Operation Frequency: 2402-2480MHz Output Power (E.I.R.P.): <10dBm
Battery	Capacity: 2900mAh Energy: 10.44Wh
Operating temperature	14°F - 104°F (-10°C - 40°C)
Charging temperature	32°F - 104°F (0°C- 40°C)

CN

安全信息

免责声明

请仔细阅读本声明，一旦使用本产品，即视为对本声明的全部认可和接受。每次使用前，请仔细检查产品，若出现破损、变形，请勿使用。使用本产品，就意味着您认可并同意，您将对使用本产品的行为和可能产生的后果负全部责任。您承诺仅会出于正当合法的目的使用本产品。您理解并同意，对于直接或间接因使用本产品而造成的滥用、不利影响、损害、伤害、惩罚或者其他法律后果，影石创新科技股份有限公司（以下简称“影石 Insta360”）将不承担任何责任。用户应遵循包括但不限于本文提及的使用注意事项。在国家法律法规范围内，本承诺解释权、修改权归影石 Insta360 所有。

警告

- ① 严禁使产品接触任何液体，切勿将产品浸入水中或将其弄湿。产品内部接触到水后可能会发生分解反应，从而引发电池自燃，甚至可能引发爆炸。
- ② 请在温度为 $-10^{\circ}\text{C} \sim 40^{\circ}\text{C}$ 的环境中使用产品。
- ③ 刚结束使用的电池处于高温状态，请等待电池降至室温后再充电。充电环境温度高于 40°C 可能导致电池膨胀、漏液、过热或损坏。
- ④ 若长时间不使用（如三个月），电池电量或耗尽，请及时给产品充电并开机。
- ⑤ 禁止将产品放在靠近热源之处（火炉或加热器等）以及将产品置于热天的汽车内。
- ⑥ 禁止机械撞击、碾压、或抛掷产品。请勿在产品上放置重物。

注意

- ① Flow Pro 不防水，切勿在雨中使用本产品。请勿对其使用任何带清洁功能的液体。建议使用柔软的干布清洁。
- ② Flow Pro 电源开启后，请确保云台转动不受外力阻挡。
- ③ 使用本产品时，请注意防尘防沙。
- ④ 本产品为高精度设备。摔落或碰撞可能会损坏产品，导致工作异常。
- ⑤ 本产品与手机夹含有磁铁，为免受磁化影响，请远离心脏起搏器等易受干扰设备。
- ⑥ 手机夹安装在手机上，会影响手机的 NFC 与无线充电功能，拆下手机夹即可恢复正常。

- ⑦ 手机夹吸附于云台上时，请确保对位准确，否则可能导致吸附不稳。
- ⑧ 手机夹为磁吸方式，吸附能力有限，建议在手持场景使用，避免高强度运动场景下使用。
- ⑨ 请在平坦地面，无风环境展开与使用三脚架，否则有摔倒损坏风险。
- ⑩ 使用结束后，建议将延长杆收回，折叠后收纳。

规格

产品名称	Insta360 Flow Pro
产品型号	CINSCBBA
输入	5V / 2A
输出	5V / 1.2A
蓝牙	工作频率：2402~2480MHz 输出： < 10dBm
电池	电容量：2900mAh 能量：10.44Wh
工作环境温度	-10°C - 40 °C
充电环境温度	0°C - 40°C

Compliance Information

FCC Statement

This equipment has been tested and found to comply with the limits for a Class B digital device, pursuant to Part 15 of the FCC Rules. These limits are designed to provide reasonable protection against harmful interference in a residential installation. This equipment generates uses and can radiate radio frequency energy and, if not installed and used in accordance with the instructions, may cause harmful interference to radio communications. However, there is no guarantee that interference will not occur in a particular installation. If this equipment does cause harmful interference to radio or television reception, which can be determined by turning the equipment off and on, the user is encouraged to try to correct the interference by one or more of the following

measures:

- Reorient or relocate the receiving antenna.
- Increase the separation between the equipment and receiver.
- Connect the equipment into an outlet on a circuit different from that to which the receiver is connected.
- Consult the dealer or an experienced radio/TV technician for help.

This device complies with part 15 of the FCC Rules. Operation is subject to the following two conditions:

(1) This device may not cause harmful interference, and (2) this device must accept any interference received, including interference that may cause undesired operation.

Changes or modifications not expressly approved by the party responsible for compliance could void the user's authority to operate the equipment.

RF Exposure

This equipment complies with FCC radiation exposure limits set forth for an uncontrolled environment. End user must follow the specific operating instructions for satisfying RF exposure compliance. This transmitter must not be co-located or operating in conjunction with any other antenna or transmitter.

IC STATEMENT

This device complies with Industry Canada's licence-exempt RSSs. Operation is subject to the following two conditions:

- (1) This device may not cause interference; and
- (2) This device must accept any interference, including interference that may cause undesired operation of the device.

Le présent appareil est conforme aux CNR d'Industrie Canada applicables aux appareils radio exempts de licence. L'exploitation est autorisée aux deux conditions suivantes :

- (1) l'appareil ne doit pas produire de brouillage, et
- (2) l'utilisateur de l'appareil doit accepter tout brouillage radioélectrique subi, même si le brouillage est susceptible d'en compromettre le fonctionnement.

RF Exposure

This equipment complies with IC radiation exposure limits set forth for an uncontrolled environment.

Cet équipement est conforme aux limites d'exposition aux radiations de la IC définies pour un environnement non contrôlé.



Declaration of Conformity

Arashi Vision Inc. hereby declares that this product is in compliance with the essential requirement and other relevant provisions of the directive 2014/53/EU .

A copy of the EU Declaration of Conformity is available online at <http://www.insta360.com/euro-compliance>

GB Compliance Statement

Arashi Vision Inc. hereby declares that this product is in compliance with the essential requirement and other relevant provisions of Radio Equipment Regulations 2017.

A copy of the GB Declaration of Conformity is available online at <http://www.insta360.com/euro-compliance>



WEEE Directive

Correctly dispose of this product. This marking indicates that this product should not be disposed with other household wastes throughout the EU/UK. To prevent possible harm to the environment or human health from uncontrolled waste disposal, recycle responsibly to promote the sustainable reuse of material resources. To safely recycle your device, please use return and collection systems or contact the retailer where the device was originally purchased.

NCC Compliance Notice

取得審驗證明之低功率射頻器材，非經核准，公司、商號或使用者均不得擅自變更頻率、加大功率或變更原設計之特性及功能。

低功率射頻器材之使用不得影響飛航安全及干擾合法通信；經發現有干擾現象時，應立即停用，並改善至無干擾時方得繼續使用。

前述合法通信，指依電信管理法規定作業之無線電通信。

低功率射頻器材須忍受合法通信或工業、科學及醫療用電波輻射性電機設備之干擾。

應避免影響附近雷達系統之操作。

部件名称	有害物质					
	铅 (Pb)	汞 (Hg)	镉 (Cd)	六价铬 (Cr ⁺⁶)	多溴联苯 (PBB)	多溴二苯醚 (PBDE)
外壳	X	○	○	○	○	○
线路板	X	○	○	○	○	○
金属部件	X	○	○	○	○	○
内部线材	X	○	○	○	○	○
配件	X	○	○	○	○	○

本表格依据 SJ/T 11364 的规定编制。
○：表示该有害物质在该部件所有均质材料中的含量均在 GB/T 26572 规定的限量要求以下。
X：表示该有害物质至少在该部件的某一均质材料中的含量超出 GB/T 26572 规定的限量要求。（产品符合欧盟 ROHS 指令环保要求）



Arashi Vision Inc.

ADD: 11th Floor, Building 2, Jinlitong Financial Center, Bao'an District,
Shenzhen, Guangdong, China

WEB: www.insta360.com

TEL: 400-833-4360 +1 800 6920 360

EMAIL: service@insta360.com

Insta360 GmbH **EC REP**  **CARTA**

Gartenfelder Straße 29-37, Gebäude 31/31.12
1.OG, 13599, Berlin, Germany

+4930221520255 service@insta360.com



V1.0