

**APPENDIX B: SYSTEM VERIFICATION**

# ELEMENT

**DUT: Dipole 2450.0 MHz; Type: D2450V2 - SN750**

Communication System: UID: 0, CW; Frequency: 2450.0 MHz  
Medium: 2450 Head; Medium parameters used:  
f = 2450.0 MHz; cond = 1.71 S/m; perm = 40.4; density = 1000 kg/m<sup>3</sup>  
Phantom Section: Flat; Space: 10 mm

Test Date: 08/22/2024; Ambient Temp: 20.4°C; Tissue Temp: 20.5°C

Probe: EX3DV4 - SN7546; ConvF:(7.31,6.67,7.21); Calibrated: 2024-04-16  
Sensor-Surface: 1.4mm (VMS + 6p)  
Electronics: DAE4 Sn1402; Calibrated: 2024-04-10  
Phantom: Twin-SAM V8.0; Serial: 2029  
Measurement SW: DASY Module SAR V16.2.4.2524

## 2450.0 MHz System Verification at 20.0 dBm (100 mW)

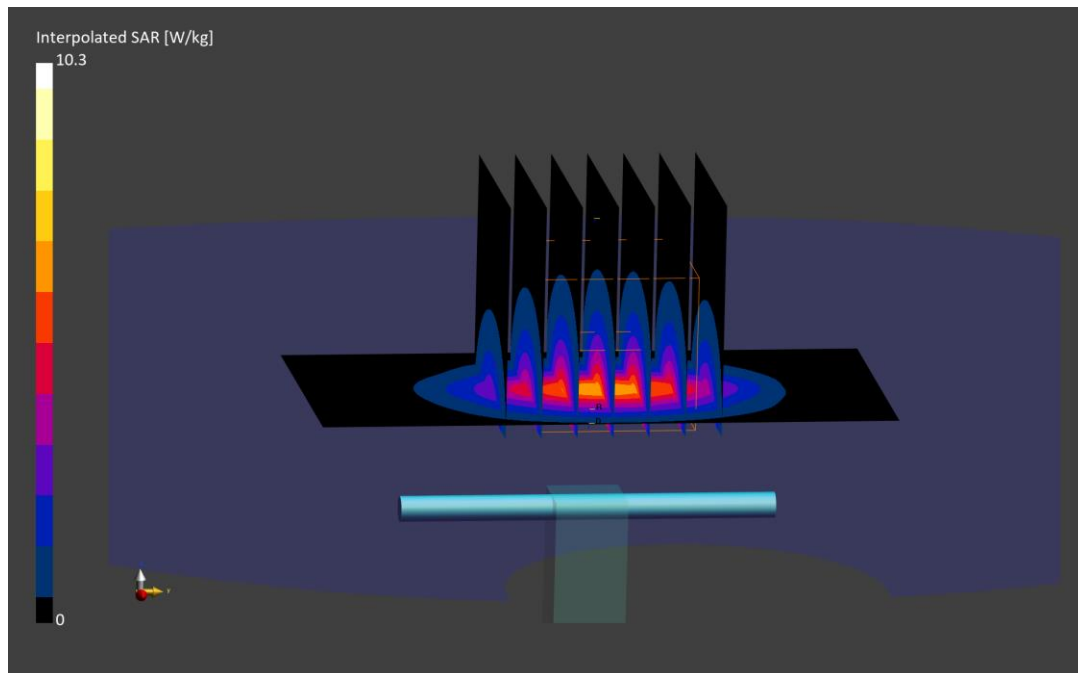
**Area Scan (40.0 x 80.0):** Measurement grid: dx=10.0 mm, dy=10.0 mm

**Zoom Scan (30.0 x 30.0 x 30.0):** Measurement grid: dx=5.0 mm, dy=5.0 mm, dz=1.5 mm; Graded Ratio: 1.5

Peak SAR (extrapolated) = 10.3 W/kg

**SAR(1 g) = 5.17 W/kg; SAR(10 g) = 2.44 W/kg**

Deviation (1 g) = -1.71%; Deviation (10 g) = -0.41%



# ELEMENT

**DUT: Dipole 2450.0 MHz; Type: D2450V2 - SN750**

Communication System: UID: 0, CW; Frequency: 2450.0 MHz  
Medium: 2450 Head; Medium parameters used:  
f = 2450.0 MHz; cond = 1.79 S/m; perm = 38.4; density = 1000 kg/m<sup>3</sup>  
Phantom Section: Flat; Space: 10 mm

Test Date: 08/23/2024; Ambient Temp: 20.5°C; Tissue Temp: 23.1°C

Probe: EX3DV4 - SN7421; ConvF:(7.33,7.33,7.33); Calibrated: 2024-03-11  
Sensor-Surface: 1.4mm (VMS + 6p)  
Electronics: DAE4 Sn604; Calibrated: 2024-03-06  
Phantom: Twin-SAM V8.0; Serial: 2067  
Measurement SW: DASY Module SAR V16.2.4.2524

## 2450.0 MHz System Verification at 20.0 dBm (100 mW)

**Area Scan (40.0 x 80.0):** Measurement grid: dx=10.0 mm, dy=10.0 mm

**Zoom Scan (30.0 x 30.0 x 30.0):** Measurement grid: dx=5.0 mm, dy=5.0 mm, dz=1.5 mm; Graded Ratio: 1.5

Peak SAR (extrapolated) = 11.4 W/kg

**SAR(1 g) = 5.12 W/kg; SAR(10 g) = 2.29 W/kg**

Deviation (1 g) = -2.66%; Deviation (10 g) = -6.53%

