

EUT - Front View



EUT - Rear View



EUT - Top View



EUT - Bottom View

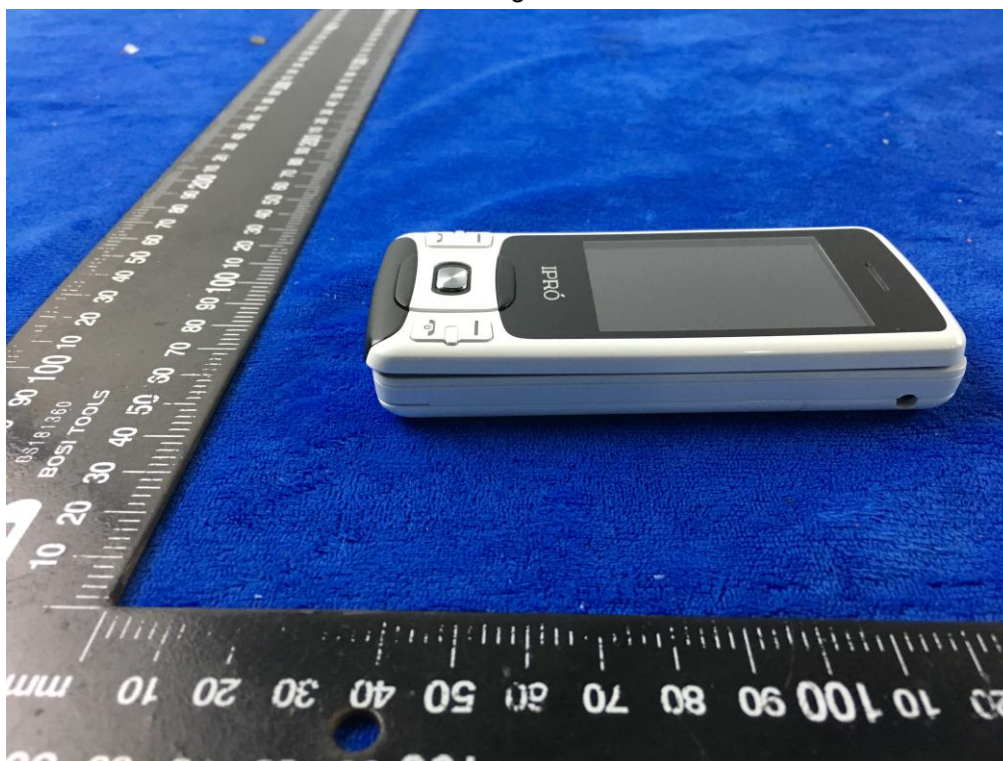




EUT - Left View



EUT - Right View





**Annex B.ii. Photograph: EUT Internal Photo**

Cover Off - Top View 1



Cover Off - Top View 2





Battery - Front View

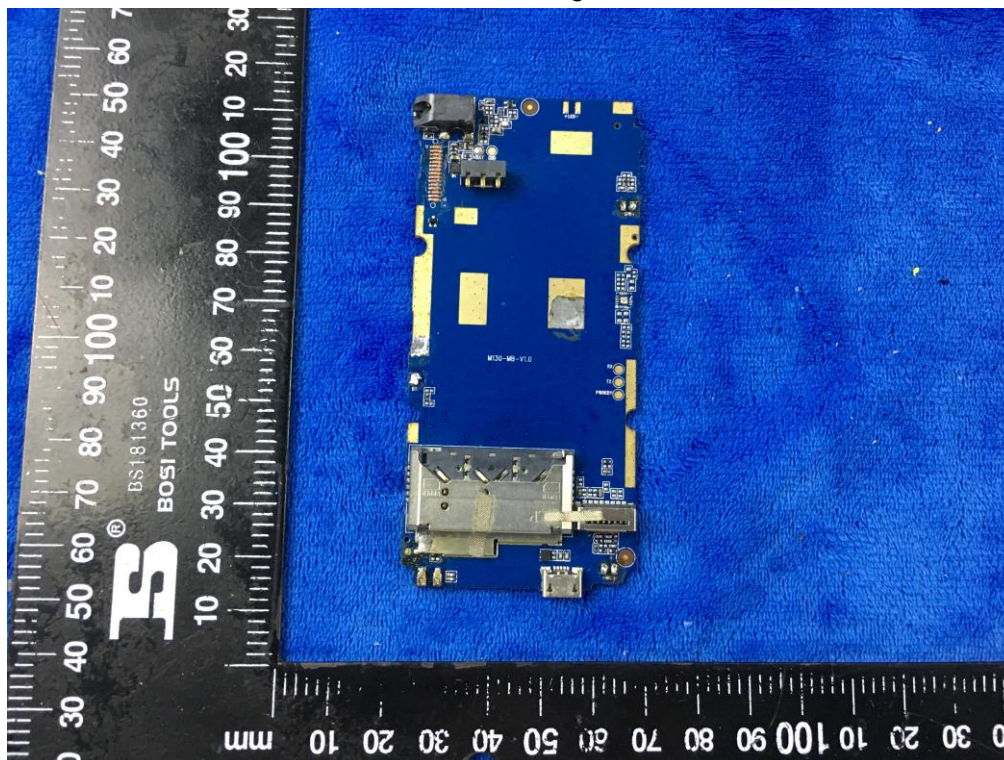


Battery - Rear View

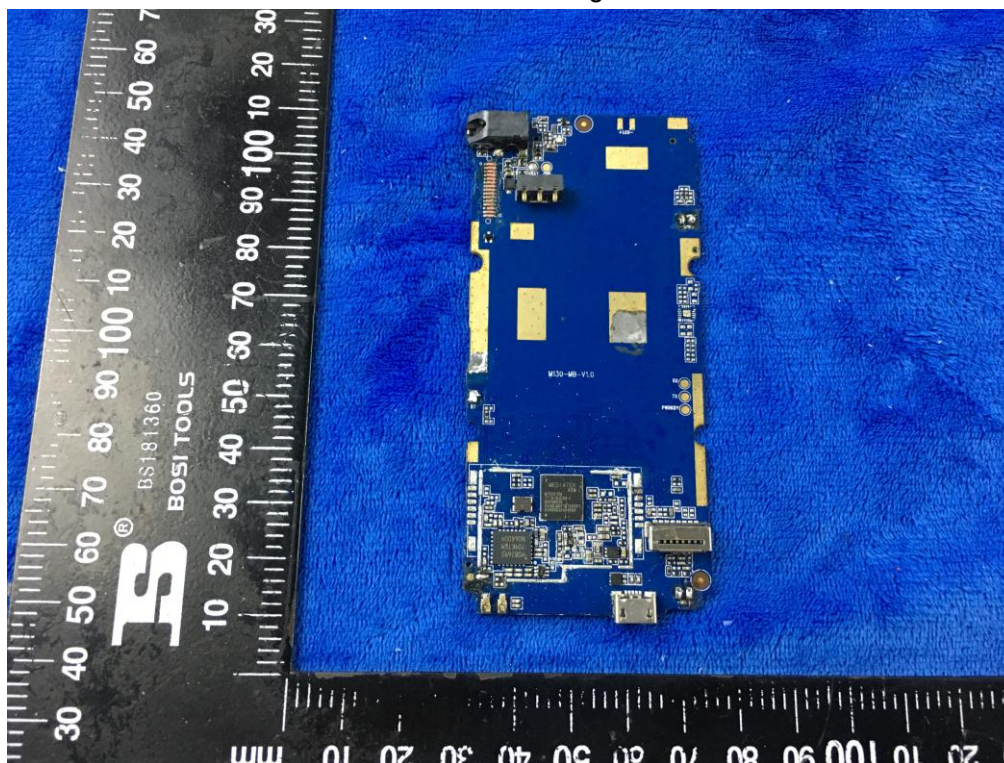




Mainboard with Shielding - Front View

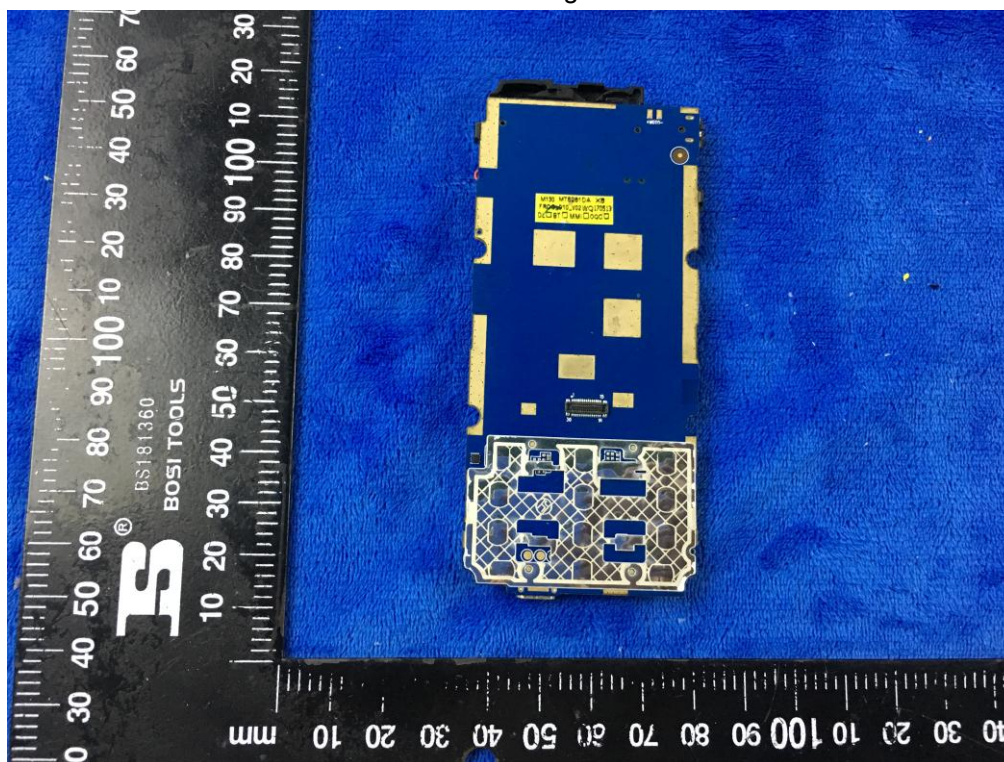


Mainboard without Shielding - Front View

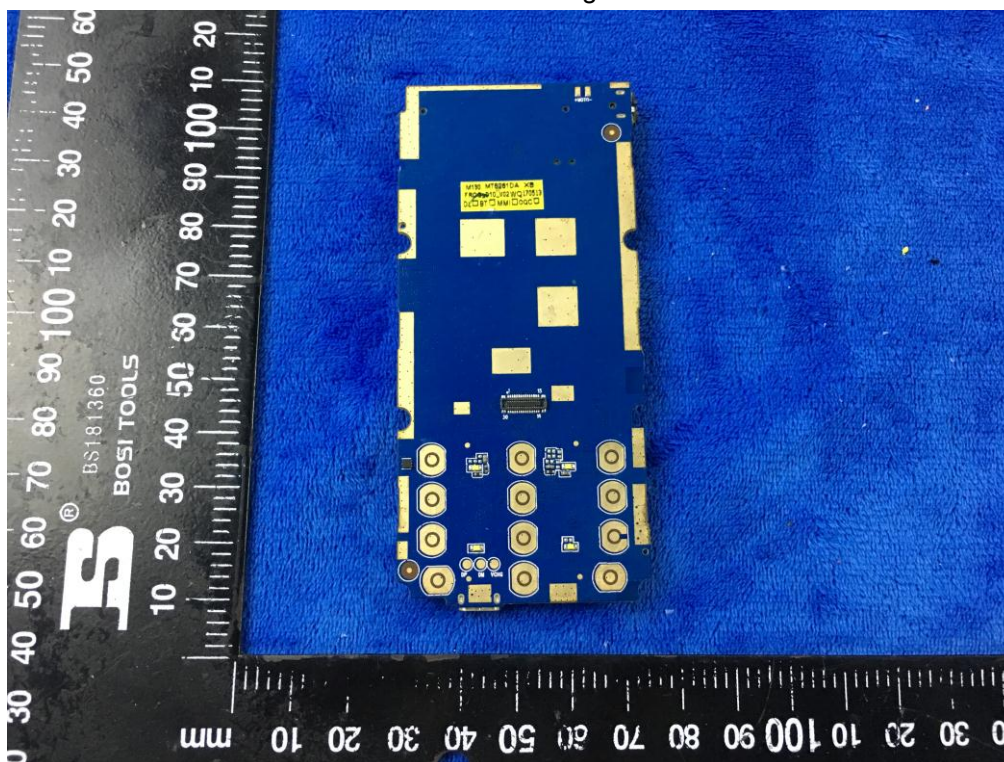




Mainboard with Shielding – Rear View

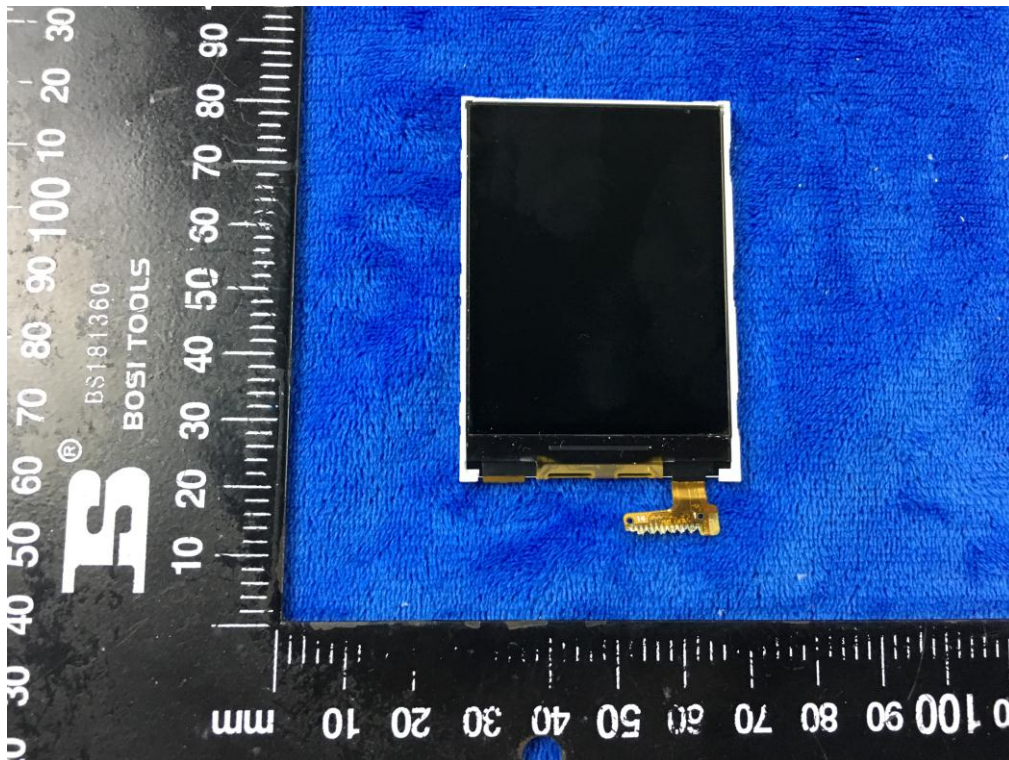


Mainboard without Shielding – Rear View

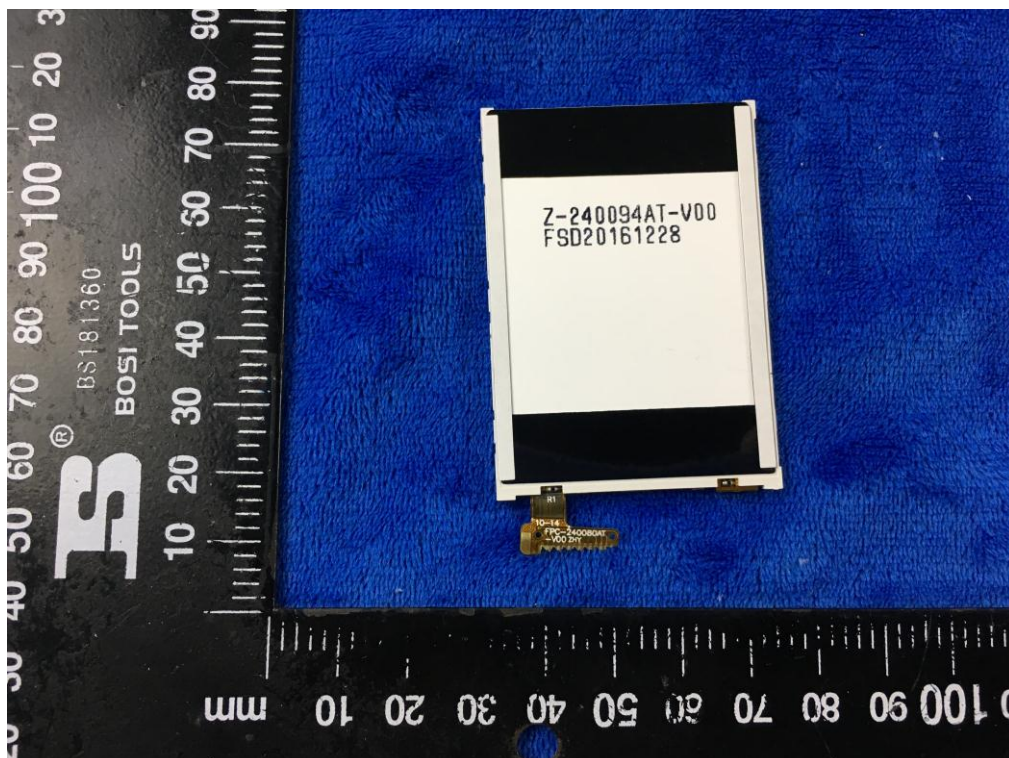




LCD – Front View

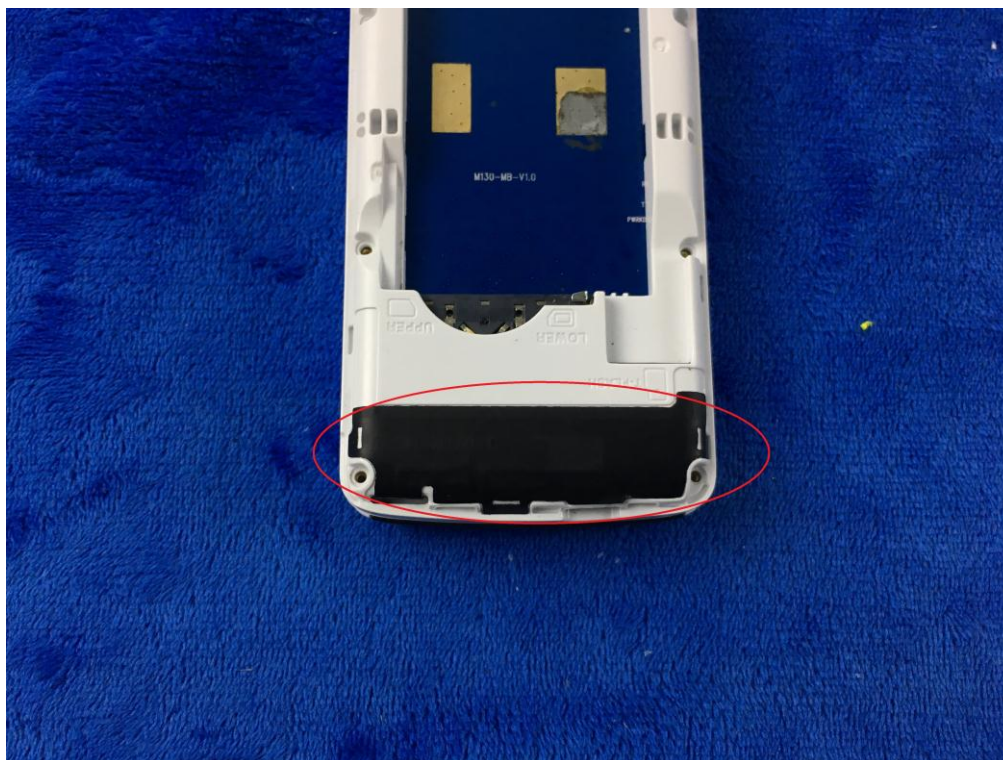


LCD – Rear View

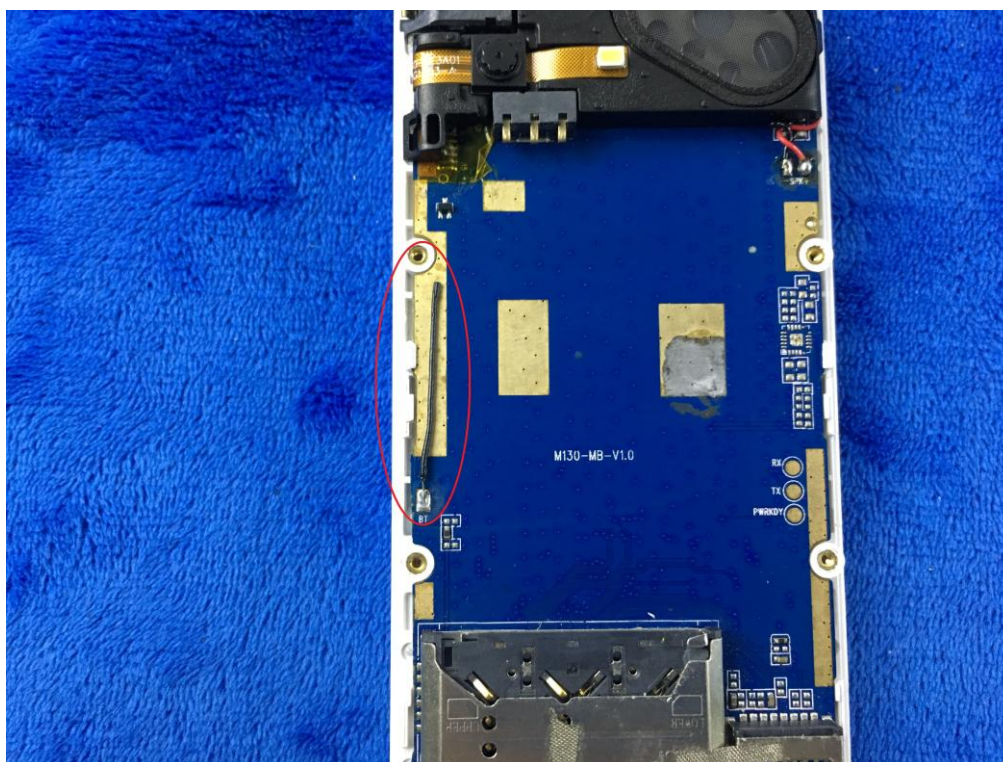




GSM/PCS Antenna View

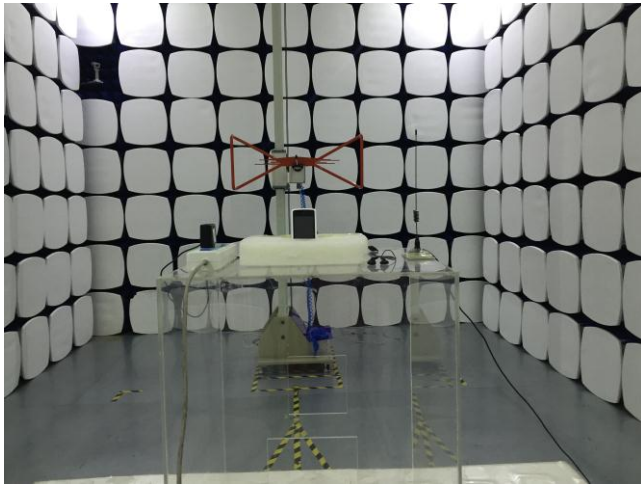


BT - Antenna View

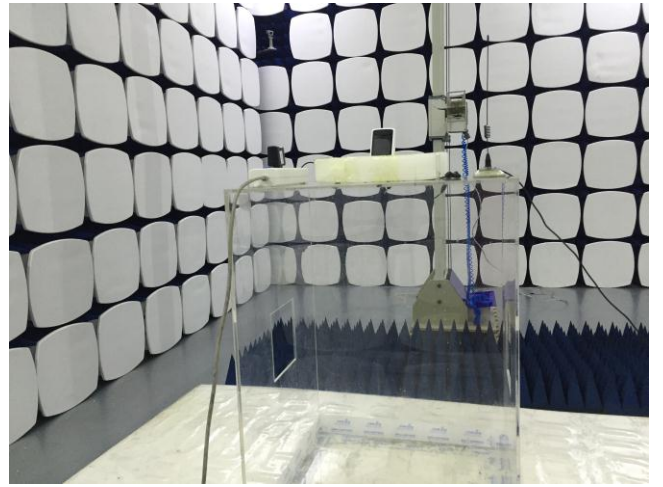




**Annex B.iii. Photograph: Test Setup Photo**



Radiated Spurious Emissions Test Setup Below 1GHz



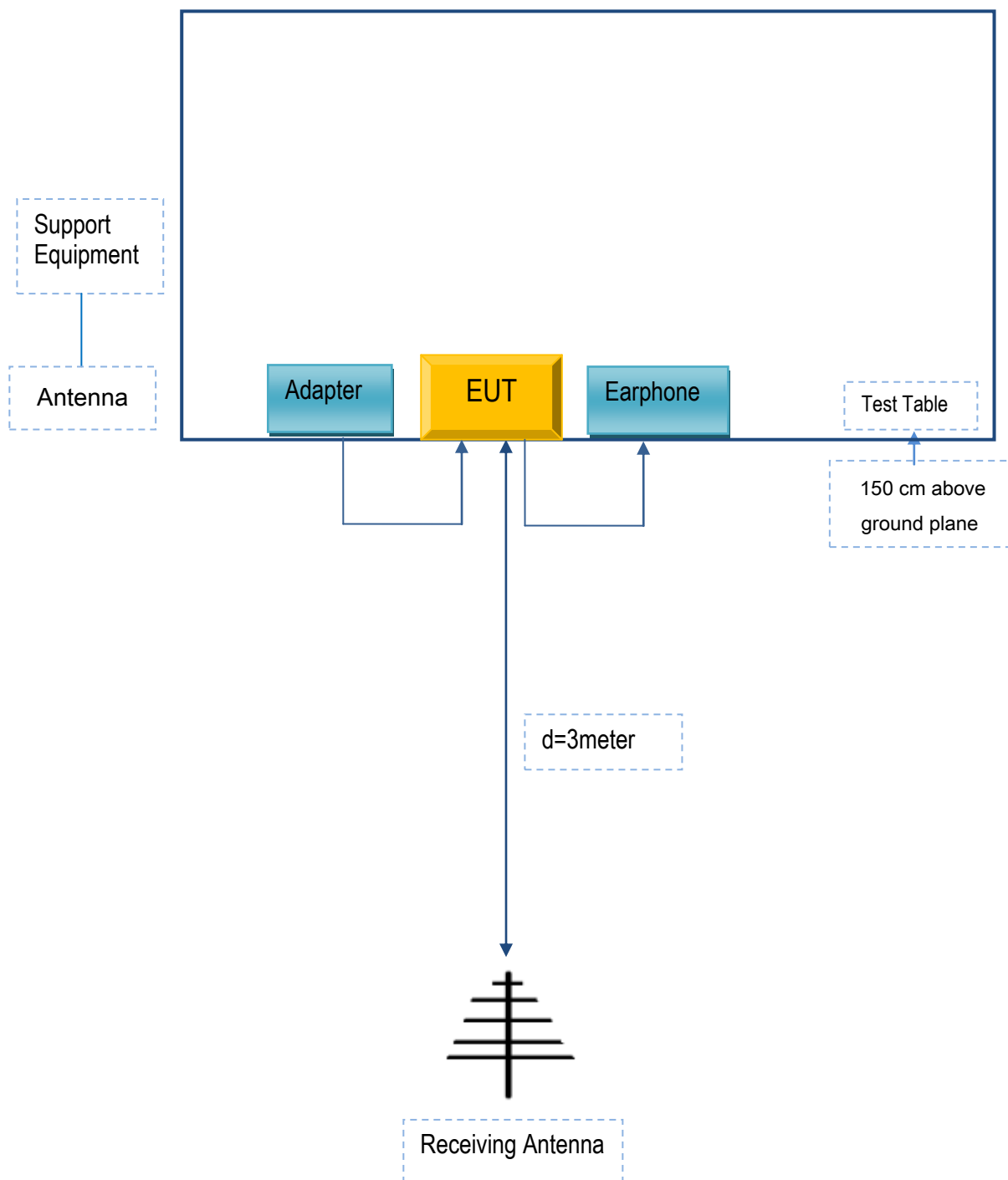
Radiated Spurious Emissions Test Setup Above  
1GHz



## Annex C. TEST SETUP AND SUPPORTING EQUIPMENT

### Annex C.ii. TEST SET UP BLOCK

#### Block Configuration Diagram for Radiated Emissions





## **Annex C. ii. SUPPORTING EQUIPMENT DESCRIPTION**

The following is a description of supporting equipment and details of cables used with the EUT.

### **Supporting Equipment:**

Manufacturer	Equipment Description	Model	Serial No
HONG KONG IPRO TECHNOLOGY CO.,LIMITED	Adapter	EE5005-288	N/A
HONG KONG IPRO TECHNOLOGY CO.,LIMITED	Earphone	S8	N/A

### **Supporting Cable:**

Cable type	Shield Type	Ferrite Core	Length	Serial No
USB Cable	Un-shielding	No	0.8m	N/A

## Annex C.ii. EUT OPERATING CONKITIONS

N/A



## Annex D. User Manual / Block Diagram / Schematics / Partlist

Please see the attachment

## Annex E. DECLARATION OF SIMILARITY

N/A