

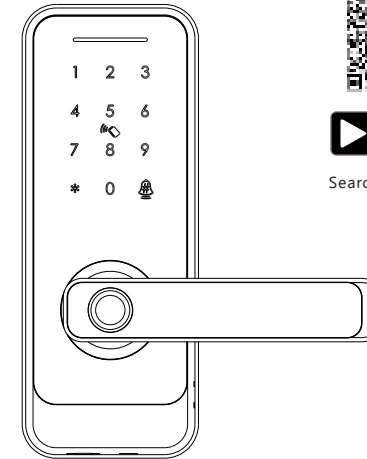
# User Manual-Electronic Lock

## TTLOCK VERSION

Scan QR code below to download the APP



Search Google Play or APPLE Store with TTLOCK



IC Card



Password



Manual Key



APP



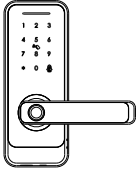
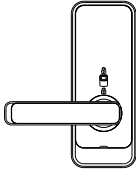
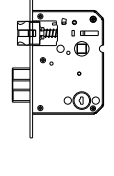






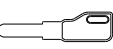
Fingerprint

Smart your life!

Version 1.0 A233 Edition 2022

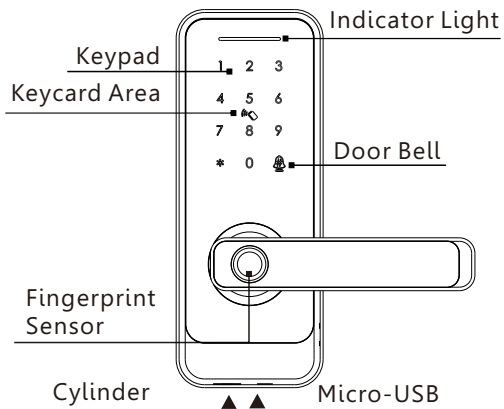
## 1 PACKING ACCESSORIES

Please check the packing box and accessories when you got the lock in hand.

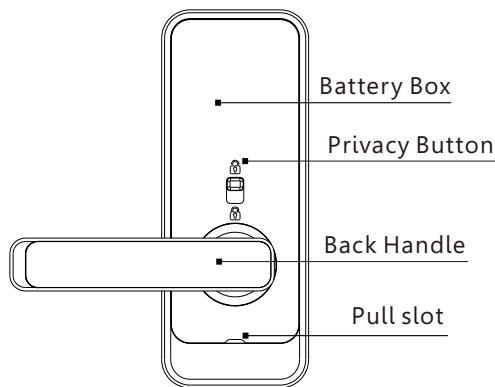
 1 Pcs Front Panel	 1 Pcs Back Panel	 1 Pcs Mortise	 1 Pcs Strike Plate	 1 Pcs Strike Box			
<div>Door Thickness Quantity</div>	 *f	 *g	 *h	 *i	<div>Smart Keycard</div>  2Pcs Keycard	  2 Pcs Manual Key	
	35-39mm	M5x40:1	M5x20:1	8x8x60:1			4x20:4
	40-50mm	M5x50:1	M5x30:1	8x8x60:1			4x20:4
	51-60mm	M5x60:1	M5x40:1	8x8x80:1			4x20:4

## 2 PRODUCT SPECIFICATION

### Front Panel



### Back Panel



### PASSAGE MODE & BELL FUNCTION

Enter the valid password or touch the IC card or press the finger to open the door. Press the number "5#" to activate the passage function. The lock will be under always open state, you can press any valid password to cancel the passage mode.

**Bell function:** You can press the button "#" to ring the bell.

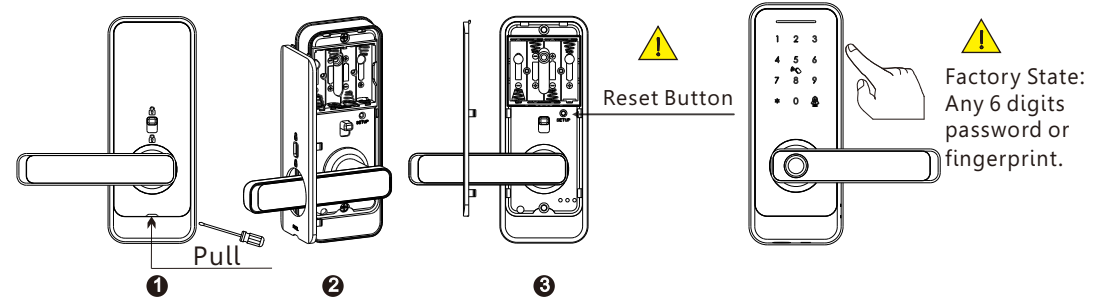
## 3 SYSTEM INTRODUCTION

Material	Aluminum Alloy,ABS,Arcylic
Color	Black/Satin Nickel
Door Thickness	35-60mm
Communication	ble
Support OS	iOS 7.0 or above, Android 4.4 or above
Battery Life	(10-12 months) by 10 times normal unlock
Power Supply	DC6V:4pcs AA alkaline batteries
Static Current	≤50uA
Dynamic Current	<200mA
Unlock Way	Fingerprint, IC Card, password,APP,manual key
Unlock Time	1~1.5 seconds
Working Temperature	-20~50 degree
Working Humidity	10%~95%
Factory Passcode	Factory master password:123456,after configuration,it will be invalid
Mortise Type	Support single latch, 5050/5572/5070/4585/6085/KS mortise
Virtual Password	Available
User Capacity	Card:200 group/password:150 groups/Fingerprint: 100 groups, one admin

## 4 RESET TO FACTORY STATE

### Attention

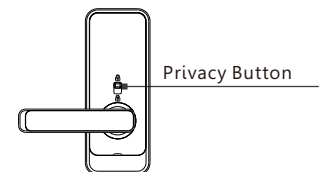
There is one Reset button on the back of rear panel.you can press this button for 3 seconds with sound tip,"please input initialization passcode,"enter: 000#, with sound: "Successful". Then the lock is under factory state, the default master password is: 123456 you can open the door with any password or fingerprint.



### DEAD LOCK FUNCTION

### Attention

There is one privacy button on the back panel. You can pull upward this button with sound tip "Locked", then the lock is dead locked inside, only the administrator can access the door, other user password or card will be invalid. And you can pull downward the button one more time with sound tip "Unlocked" to cancel this function.




## 5 INFORMATION AND SAFETY WARNINGS:

### 5.1 Introduction

This user manual will guide you through the functions and usages of our A260 smart lock. It is important that you follow the instructions and regard all notes that appear throughout this manual. Consult this manual before you attempt to use this lock. If you have any questions that not answered by this manual or on need of non-routine service, please call our customer service hotline or send FAQ to us.

### 5.2 Safety Warnings:

 When reading this manual, note these icons: notes with the icon Must be read, understood and obeyed to prevent injury or damage to the lock.

#### General Usage

- This lock shall only be used as described in this manual.
- Verify that all parts of the lock are accounted for. If any parts are missing, please contact our service person.
- Under factory default state, the lock is on always open status after you install the lock (no power on). It means the handle is free and lock can't be locked, you shall power on the lock with batteries or set admin and pair the lock with the APP and then the lock will be under private mode automatically.
- Handle directions are reversible, please kindly follow chapter 6 to change the direction if the door opening direction is not same with your lock. Should you have any problem, please contact our service person.
- There is protective film on the front touch panel, if there are some scratches on the film, please remove the film if you need.
- Please use 4pcs AA batteries. Do not mix old and new batteries or other Zn/Mn batteries. Never insert objects into the lock other than batteries as described in this manual.
- Verify all surfaces are flat and level before beginning installation, installation on doors or surface with any types of deformity such as gaps or warping may cause the lock to malfunction or fail to operate entirely.
- Never apply any cleaner directly to any part of this lock. Only use clean water or mild cleaner on a soft non-abrasive cloth when cleaning.
- Potential shock warning: do not allow water or liquids to get into the lock's electric parts.
- The lock must be used with TTLOCK APP. The lock will function without the APP but full functionality may only be achieved when the APP is on use.

### 5.3 SALES AND SERVICE TERMS

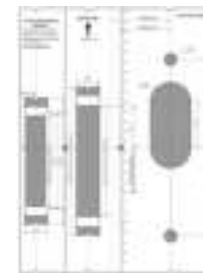
- Please read the manual carefully before use!
- Limited 1-Year Electronic Warranty Limited Lifetime Mechanical and Finish Warranty  
This A233 product comes with a 1-Year Limited Warranty on Electronic Parts and a Limited Lifetime Mechanical and Finish Warranty against defects in materials and workmanship under normal use to the original residential user. Proof of purchase and ownership is required for the warranty.
- Any change submit to our confirmation
- Any error or question in our manual or sales term, please feel free to contact with us.
- It is forbidden to copy our manual and for other usage, except the authorized company and users.
- For any wrong operation or installation to the user or third party, we do not responsible for the duty.
- For the damage caused by anthropic factor or inevitable reason, we do not pay for the loss or maintain for free, please check our after sale service terms.
- Please do not take apart the lock if you are not technician, if necessary, please make the operations under the guide of technician.
- Notice: there maybe a little difference for product pictures with real product, please subject to our real products. After changing the battery, please do not throw away the battery, kindly refund to recycle bin in case of pollution!

## 6 PREPARING TO INSTALL

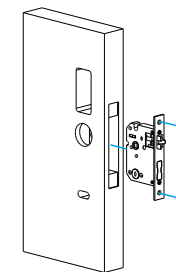
### 6.1 Line Drawing

Draw a horizontal center line inside and outside the door at 1 meter from the ground. Fold the hole template, make the handle center line align at the door horizontal center line, then draw out the hole lines at front and side.

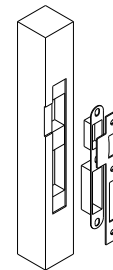
#### Drawing Center Line



Drill Hole with Template  
Step 1




Test with Mortise  
Step 2



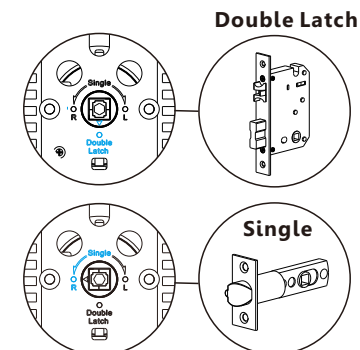
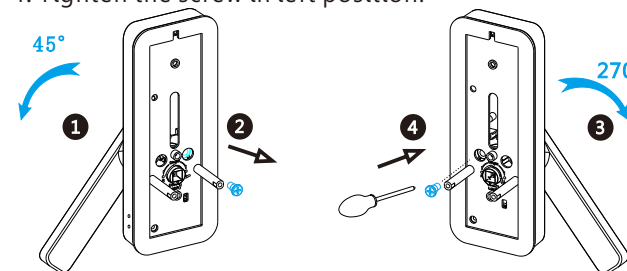
Drill hole for Strike  
Step 3

### 6.2 Adjust Direction

#### 6.2.1. Adjust from Right to Left Direction (Front Panel)

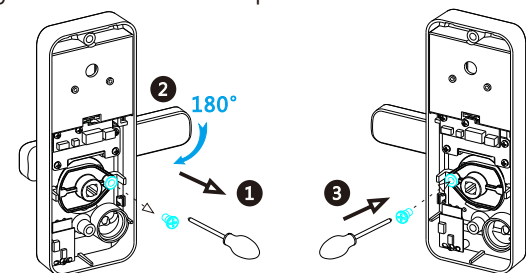
 Make sure the arrow point to the right position according to the different mortise.

1. Turn the handle with 45 degree.
2. Use the allen key to take off the screw like the photo.
3. Turn the handle to 270 degree counterclockwise.
4. Tighten the screw in left position.



#### 6.2.2. Adjust from Right to Left Direction (Back Panel)

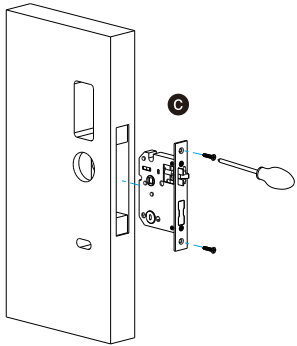
1. Use the allen key to take off the screw on the right position.
2. Turn the handle to 180 degree counterclockwise.
3. Tighten the screw in left position.



**7 INSTALLATION STEPS:**

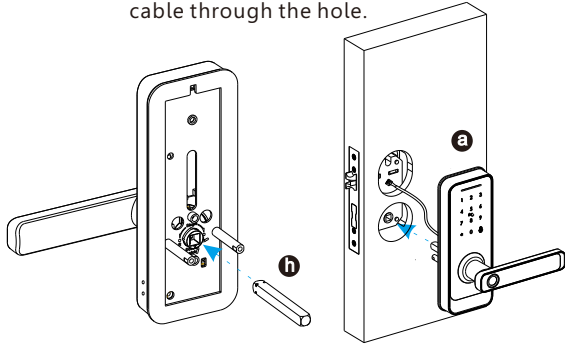
**7.1 Assemble the Mortise**

Assemble the mortise(c) into the slot which is drilled according to the template.



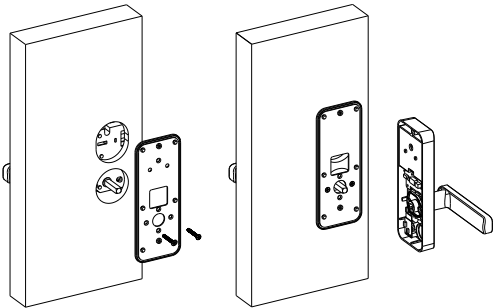
**7.2 Assemble the Front Panel**

- 7.2.1 Press hard the spindle (h) into the handle hole.
- 7.2.2 Fix the front panel(a) on the door and cross the cable through the hole.



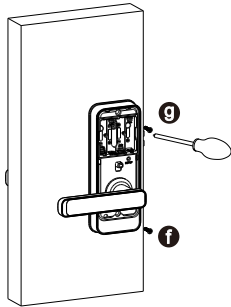
**7.3 Fix Back Plate**

Fix the back plate on the back, cross the cable through the hole and connect with the PCB board.



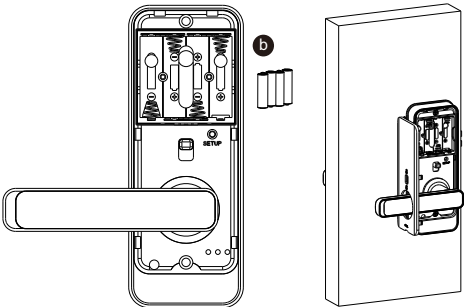
**7.4 Fix the Back Panel**

Tight the back panel with front panel with the long screws as the photo.



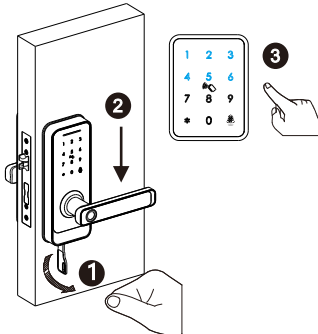
**7.5 Assemble the Battery Box**

Put 4pcs AA alkaline batteries into the battery box and buckle the battery box cover.



**7.6 Test Lock and Unlock by Manual Key**

After finishing installation, please test with password: 123456 and turn the manual key and then press the handle to open.



**OPERATION STEPS**

Please enroll the administrator before you start to use this lock. you can follow the operation steps as below:

**1.Initialization**

**1** Press the reset button and hold 3 seconds

**2** Please input initialization passcode, enter: 000#, with sound : "Successful"

**2.Change Language**

Factory state: Default master passcode is:123456.

**1** Press \*39 #123456#2#  
Change to English voice tip

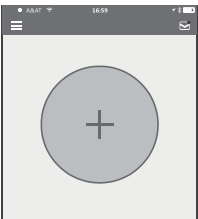
or

**2** Press \*39 #123456#1#  
Change to Chinese voice tip

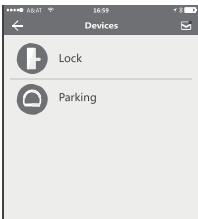
**2.Enroll Mobile Administrator**

- 2.1 Factory state: press \*12#123456#new passcode#new passcode#.
- 2.2 You can use the mobile APP to add the Bluetooth administrator.  
When adding the door locks, operations must be completed near the lock.

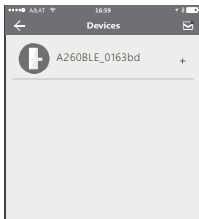
Touch screen, light on  
Voice tip:"please add Bluetooth administrator".



Step 1: Click "+" button



Step 2: Select the lock



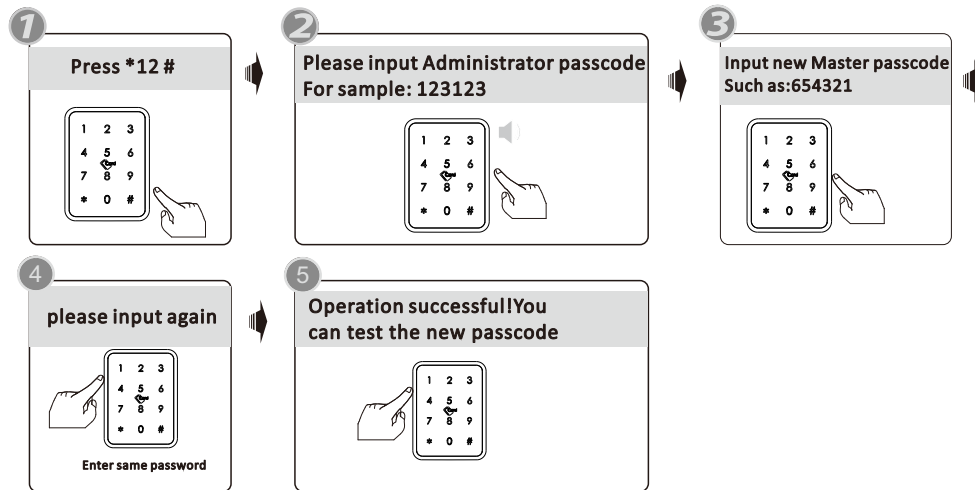
Step 3: Click the device name

### 3.Change Master Passcode

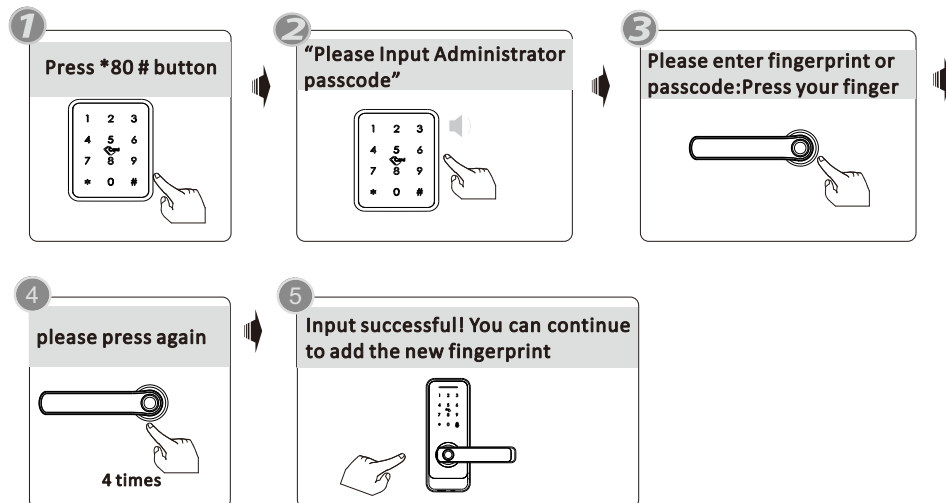
you can find the new master passcode in the mobile APP under “Settings”.also you can edit the master passcode on App directly and upload Admin passcode to the lock like the below photo.



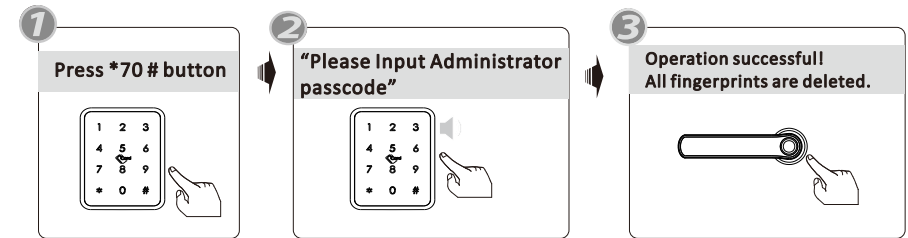
you can also change the master passcode on the lock directly.  
Please find the operation steps below:



### 4.Enroll User Fingerprint



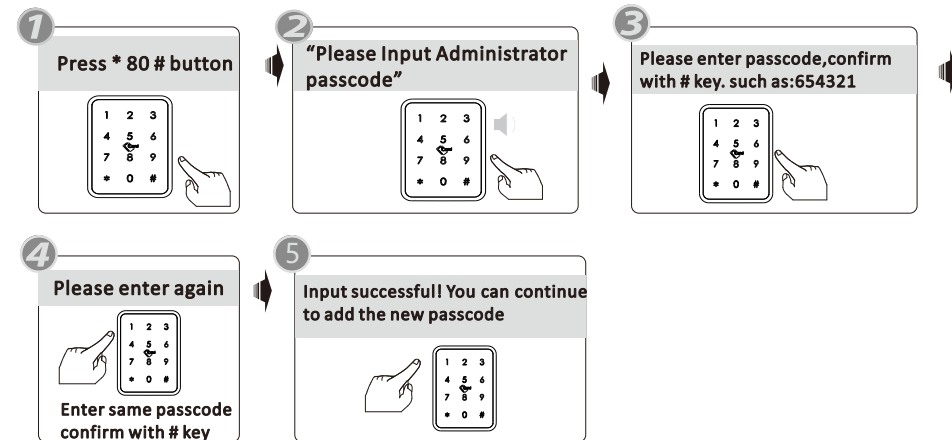
### 5.Delete User Fingerprint



APP operation: you can deleted the added fingerprints one the lock and server.



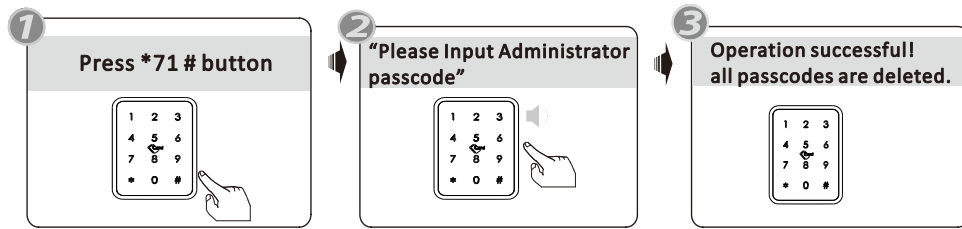
### 6.Enroll User Password



Under the mobile APP, you can upload the added passcodes to the lock and server.



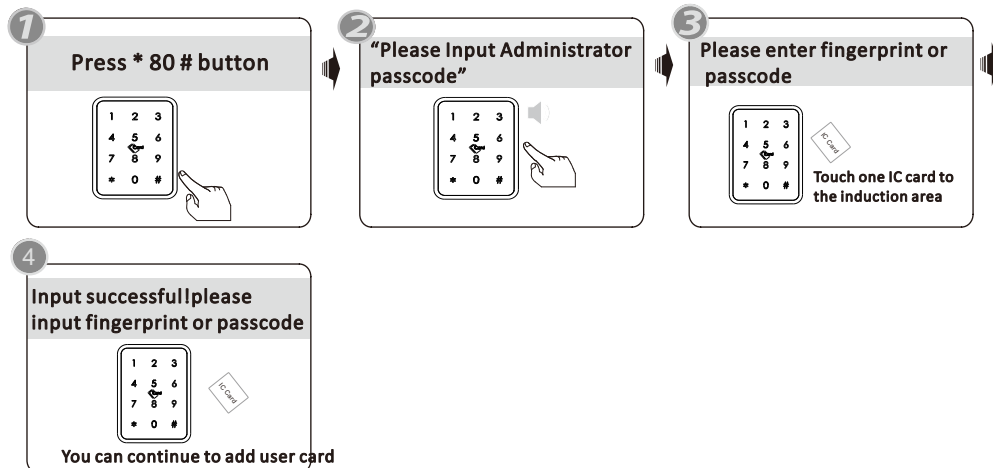
## 7.Delete User Passcode



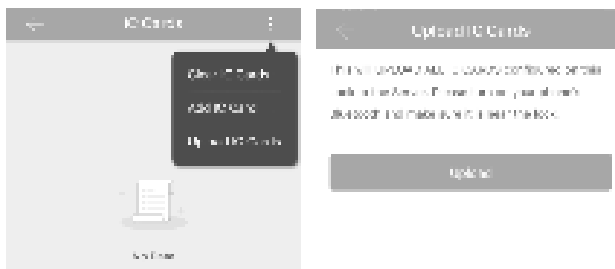
Under the mobile APP, you can find the added passcodes, you can edit any passcode and click Delete button to delete the passcode.



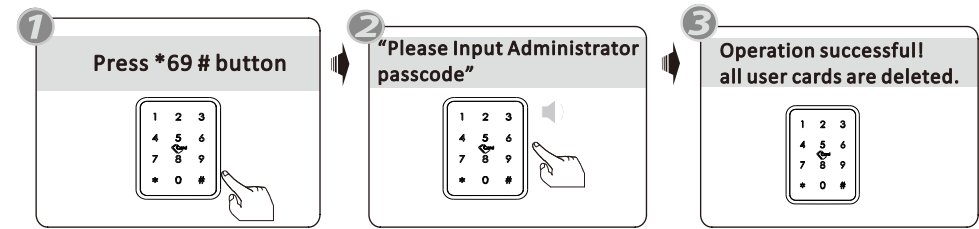
## 8.Enroll User Card



Under the mobile APP, you can upload the added cards to the lock and server.



## 9.Delete User Card

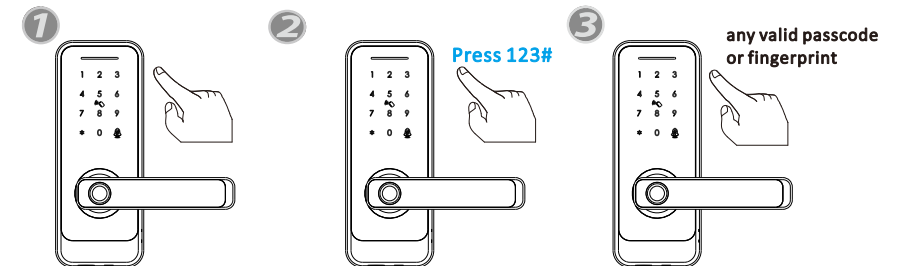


Under the mobile APP, you can find the added IC Cards, you can edit any username and click Delete button to delete the card, also you can choose upload IC Cards to ensure the card is deleted in the server.



## 10.Passage Mode

Unlock the door with any valid passcode or fingerprint.  
Press 123# button during the time of unlocking.  
Sound tip: the lock set to passage mode  
Then the lock is under always open state, you can enter any valid passcode or fingerprint to cancel this function.



## 11.Unlock Records

You can find the unlock records for the passcode/IC Card/Fingerprint etc.  
More details, you can refer the manual of our TTLOCK App operation steps.



#### FCC WARNING

This device complies with part 15 of the FCC Rules. Operation is subject to the following two conditions: (1) this device may not cause harmful interference, and (2) this device must accept any interference received, including interference that may cause undesired operation. Any changes or modifications not expressly approved by the party responsible for compliance could void the user's authority to operate the equipment.

NOTE: This equipment has been tested and found to comply with the limits for a Class B digital device, pursuant to Part 15 of the FCC Rules. These limits are designed to provide reasonable protection against harmful interference in a residential installation. This equipment generates, uses and can radiate radio frequency energy and, if not installed and used in accordance with the instructions, may cause harmful interference to radio communications. However, there is no guarantee that interference will not occur in a particular installation. If this equipment does cause harmful interference to radio or television reception, which can be determined by turning the equipment off and on, the user is encouraged to try to correct the interference by one or more of the following measures:

- Reorient or relocate the receiving antenna.
- Increase the separation between the equipment and receiver.
- Connect the equipment into an outlet on a circuit different from that to which the receiver is connected.
- Consult the dealer or an experienced radio/TV technician for help.

To maintain compliance with FCC's RF Exposure guidelines, This equipment should be installed and operated with minimum 20cm distance between the radiator and your body: Use only the supplied antenna.