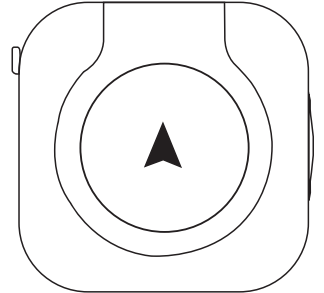


100\*80mm

## User Manual

C08  
V:1.1



Please read the instructions carefully before use

Welcome to use our pet GPS health detector, which is a high-tech product that provides health monitoring and positioning services for your pets.



### WARNINGS

This device is only used for pet positioning and health monitoring and cannot be used for other purposes.  
Do not immerse the device in water or expose it to extreme weather to avoid damage to the device.  
If any abnormality occurs during use, please stop using it immediately and contact customer service personnel.  
Please comply with relevant local laws and regulations and use this product legally.  
This device is for household pet use only.  
For a better device experience, please choose a big brand operator to purchase a SIM card. In areas with poor signal, device data updates may be delayed. It is recommended to use high-speed transportation. If the device cannot connect to the APP and the network, please contact our agents and we will deal with your problem as soon as possible.  
Accessory tweezers are somewhat dangerous, please keep them away from children and prevent scratches during use.

### Precautions for use

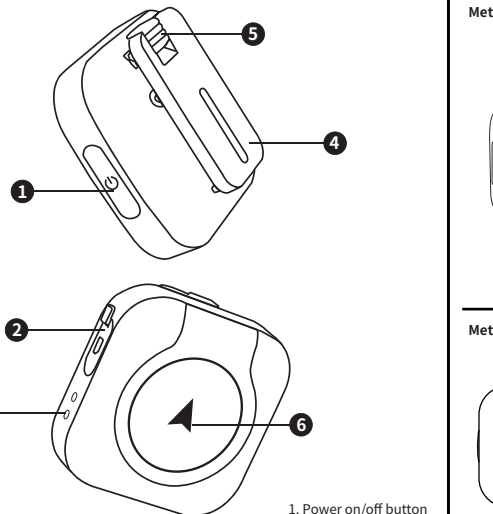
**Activate the device:** Before use, please make sure to activate the device correctly and complete the setup according to the instructions in the manual.  
**Device charging:** Please use the matching charger to charge the device to ensure that the device maintains good power status.  
**Wearing position:** Wear the device correctly around your pet's neck to ensure your pet is comfortable and the device is working properly.  
**Regular inspection:** Regular inspection: Regularly check the status of the equipment to ensure normal operation of various functions.  
**Network support:** This device requires 4G network to work properly, please Make sure there is adequate network coverage in your area.

### Product Features

**Activity monitoring:** Record your pet's activity, including steps, calories consumed, etc., to help you understand your pet's movement status.  
**Sleep monitoring:** Analyze the sleep quality and habits of pets to provide a more comfortable sleeping environment for pets.  
**Pet search:** Enter the APP and select one-click search, and the product will make a sound and flash light.  
**Real-time and accurate positioning:** Through GPS technology, it provides real-time and accurate pet location information, ensuring that you can track your pet's whereabouts anytime and anywhere.

We are committed to providing you with high quality products and services. If you have any questions or need help during use, please feel free to contact our customer service team.  
I wish you and your pets a happy life!

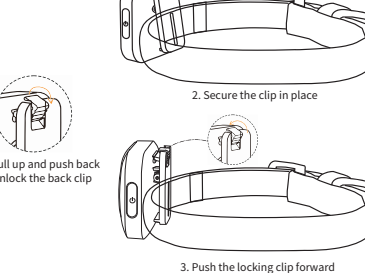
### Product Description



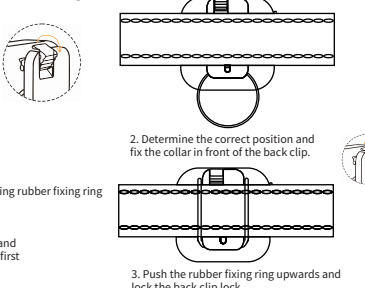
1. Power on/off button
2. SIM card slot
3. Charging interface
4. Back clip
5. Rear clip lock
6. Status indication

### Back clip use

#### Method of use 1: (small size collar)

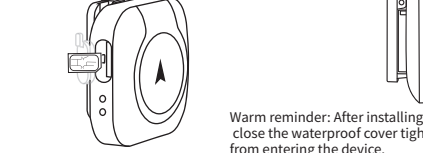


#### Method of use 2: (medium and large size collars)



### Install SIM card

Open the SIM card waterproof cover and insert the SIM card into the device card slot according to the direction. (As follows)



Warm reminder: After installing the SIM card, please close the waterproof cover tightly to prevent water from entering the device.



### Power on and off

**Power on:**  
Press and hold the power button for 2 seconds. You will hear two beeps and the device's RGB light flashes once, indicating that it has been successfully powered on.

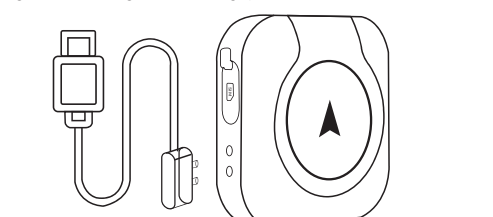
**Shut down:**  
Press and hold the power button for 2 seconds. Hearing a beep indicates that the device is about to shut down.

### Product charging

1. Please fully charge the battery when using it for the first time.
2. Please use DC5V/1A charger to charge.
3. When properly connected, the device indicator light will light up. The indicator light is red when charging and turns off when fully charged.
4. After downloading the APP and connecting the product, the battery percentage of the product will be displayed on the APP.
5. The APP has 4 positioning mode settings, please choose according to your needs:  
5.1 Power saving mode (easy mode): lower positioning frequency.  
5.2 Normal mode: The positioning frequency is moderate.  
5.3 Performance mode: Positioning frequency is higher.  
5.4 Live Mode: When Live Mode is enabled, the location updates in real time but the battery drains quickly.

### Low pressure reminder

Please charge when the red light flashes during operation.



### Kind tips:

1. Overcharging will shorten battery life.
2. When not using the product, please turn off the power to extend battery life.
3. Please do not use a charger that does not meet the specifications to charge the product.
4. For your safety, the device automatically turns off during charging. If there are special circumstances, you can turn on the device and use it during charging.

### Product APP functions and usage methods

#### 1. Real-time precise positioning



#### 2. Health testing



#### 3. Motion track record



#### 4. Safety range setting (electronic fence)



#### 5. Shared equipment



#### 6. Remote restart and one-click reminder

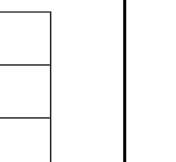


### Product parameters

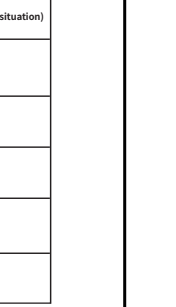
Charging type	USB to magnetic
Charging voltage	DC5V/1A
Battery capacity	3.7V/500mAH
Charging time	≈ 1H
Battery Life	3-7 days (depending on the actual situation)
Waterproof level	IPX6
Operating temperature	-20—60℃
Material	ABS+PC+Silicone
Network	GSM/GPRS/GPS
App	Tuya APP

Outdoor positioning accuracy: 1-10M (positioning effect will be affected by the environment, such as network signal strength, network delay, etc.)

### Product APP download and use



1. Scan the QR code of Tuya APP to download and log in
2. Open the APP, select "Scan" from the "+" in the upper right corner and scan the product QR code.



Client available for ios and Android.  
Scan the QR code above or search "Tuya Smart" directly in the app store to install it.

### FCC Statement

This equipment has been tested and found to comply with the limits for a Class B digital device, pursuant to part 15 of the FCC Rules. These limits are designed to provide reasonable protection against harmful interference in a residential installation. This equipment generates, uses and can radiate radio frequency energy and, if not installed and used in accordance with the instructions, may cause harmful interference to radio communications. However, there is no guarantee that interference will not occur in a particular installation. If this equipment does cause harmful interference to radio or television reception, which can be determined by turning the equipment off and on, the user is encouraged to try to correct the interference by one or more of the following measures:

- Reorient or relocate the receiving antenna.
- Increase the separation between the equipment and receiver.
- Connect the equipment into an outlet on a circuit different from that to which the receiver is connected.
- Consult the dealer or an experienced radio/TV technician for help.

Caution: Any changes or modifications to this device not explicitly approved by manufacturer could void your authority to operate this equipment. This device complies with part 15 of the FCC Rules. Operation is subject to the following two conditions:  
(1) This device may not cause harmful interference,  
(2) this device must accept any interference received, including interference that may cause undesired operation.

RF Exposure Information  
The device has been evaluated to meet general RF exposure requirement. The device can be used in portable exposure condition, compliance with exposure requirements.

CE FCC RoHS UK UK RECYCLED MADE IN CHINA