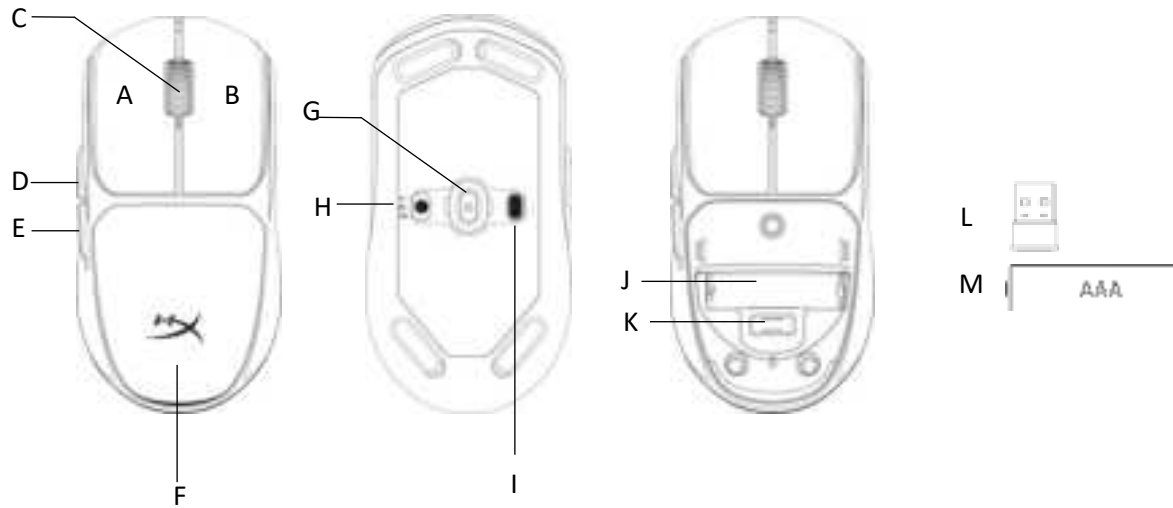


Quick Start Guide v1.0

HyperX Pulsefire Fuse

Wireless Gaming Mouse

Overview



- A. Left click button
- B. Right click button
- C. Mouse wheel
- D. Forward button
- E. Back button

- F. Magnetic battery cover
- G. Optical gaming sensor [[Translate Sensor](#)]
- H. Power mode switch
- I. DPI button

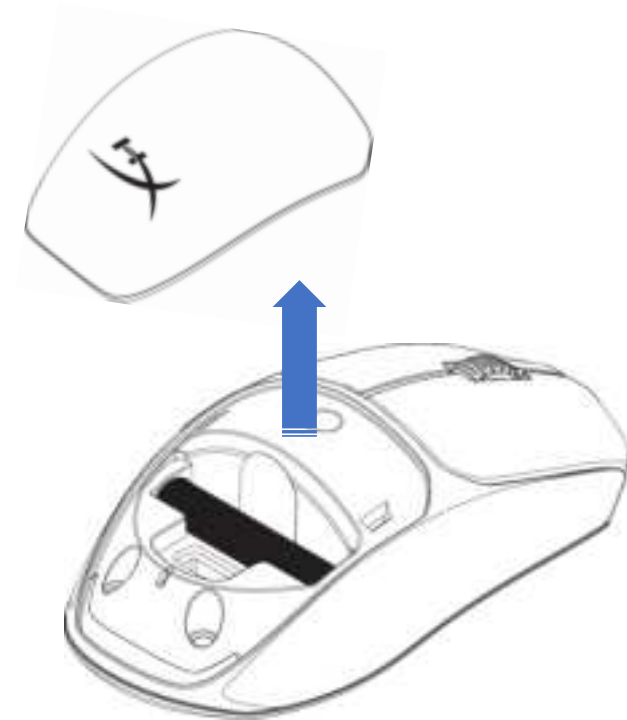
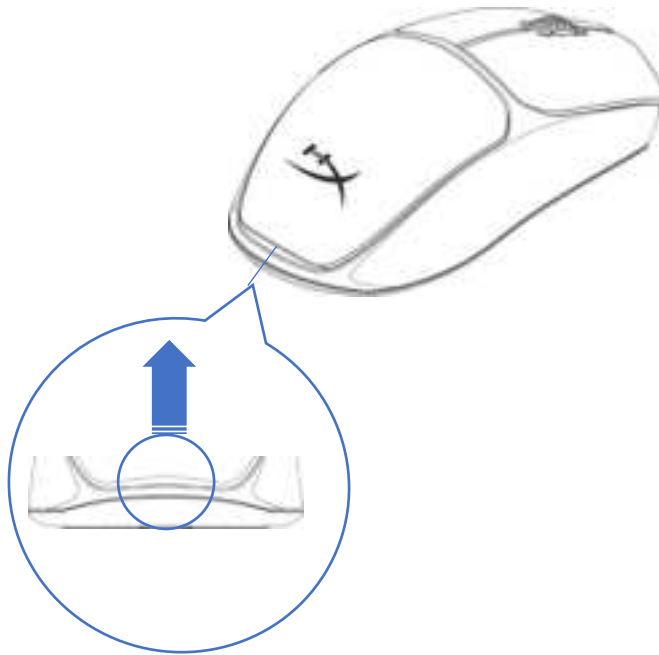
- J. AAA battery slot
- K. USB wireless dongle storage
- L. USB wireless dongle
- M. 1x AAA battery



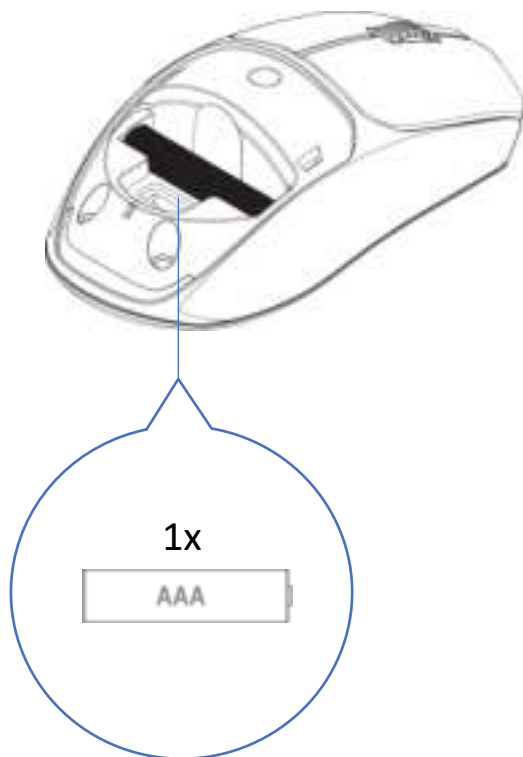
Installation

1. Remove magnetic battery cover
2. Insert (2A) or Remove (2B) 1x AAA Battery
3. Install magnetic battery cover

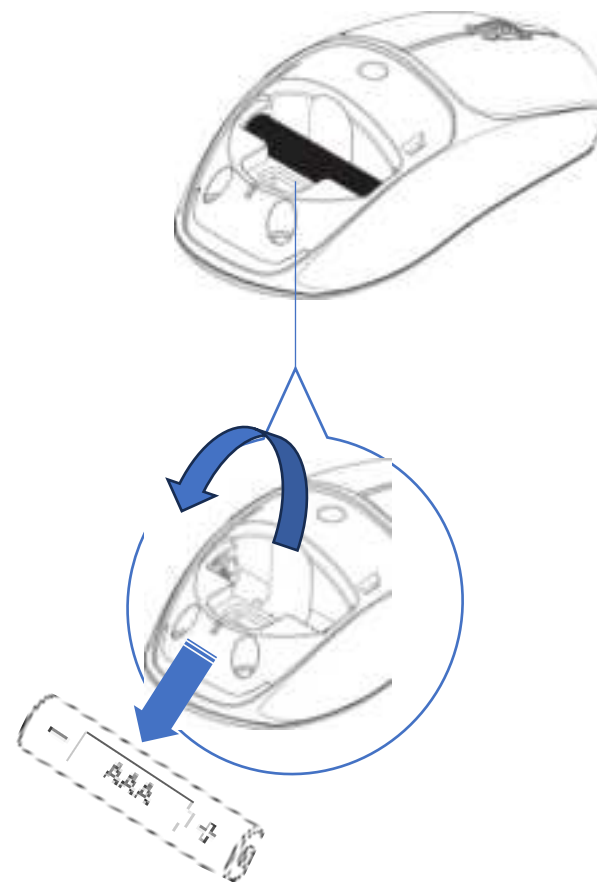
1



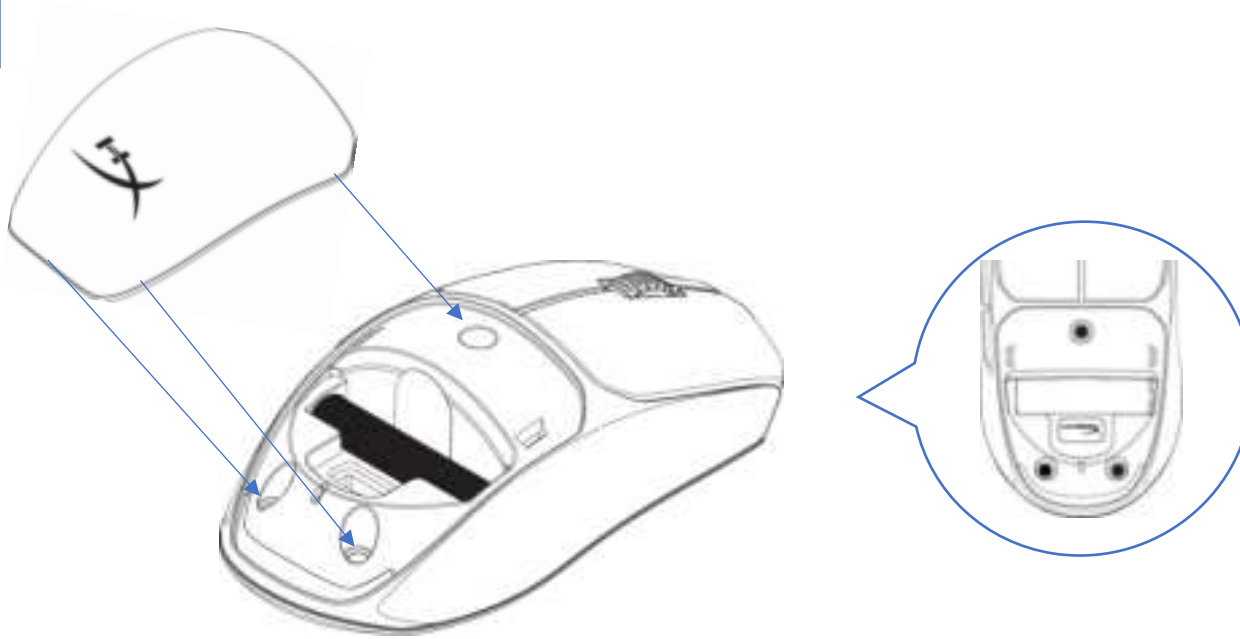
2A



2B



3

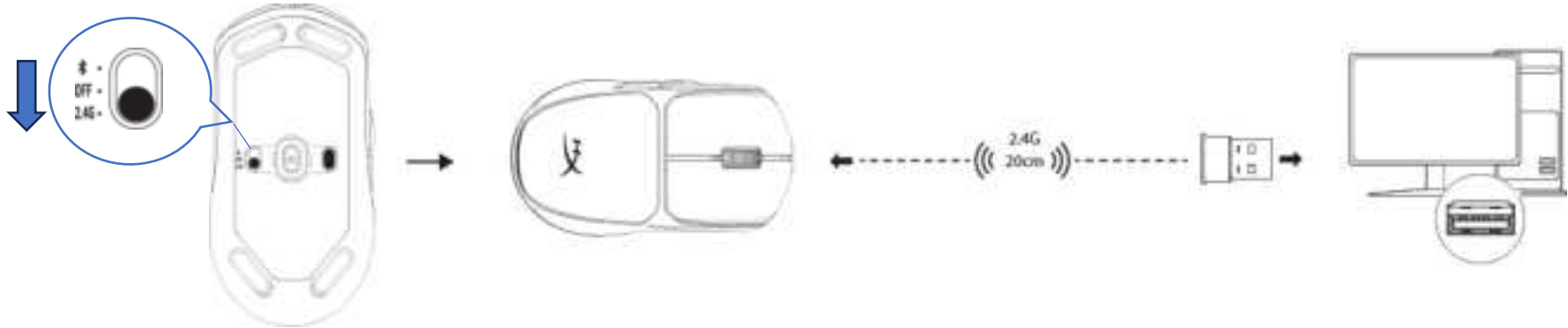


Usage

2.4G Wireless Mode

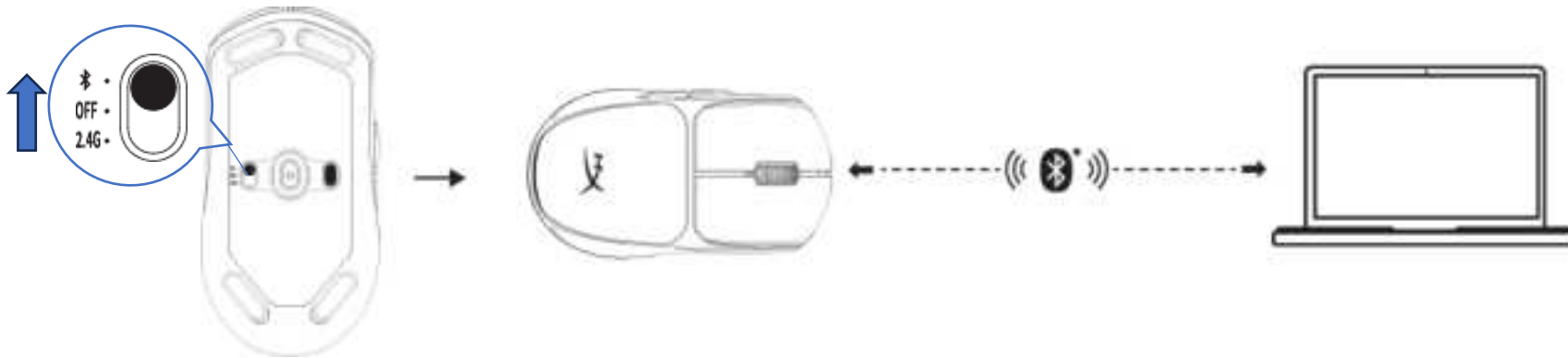
1. Switch the mouse to 2.4G power mode.
2. Connect the wireless adapter to a PC or game console.

For optimal placement, keep the USB wireless dongle within 20 cm of the mouse.



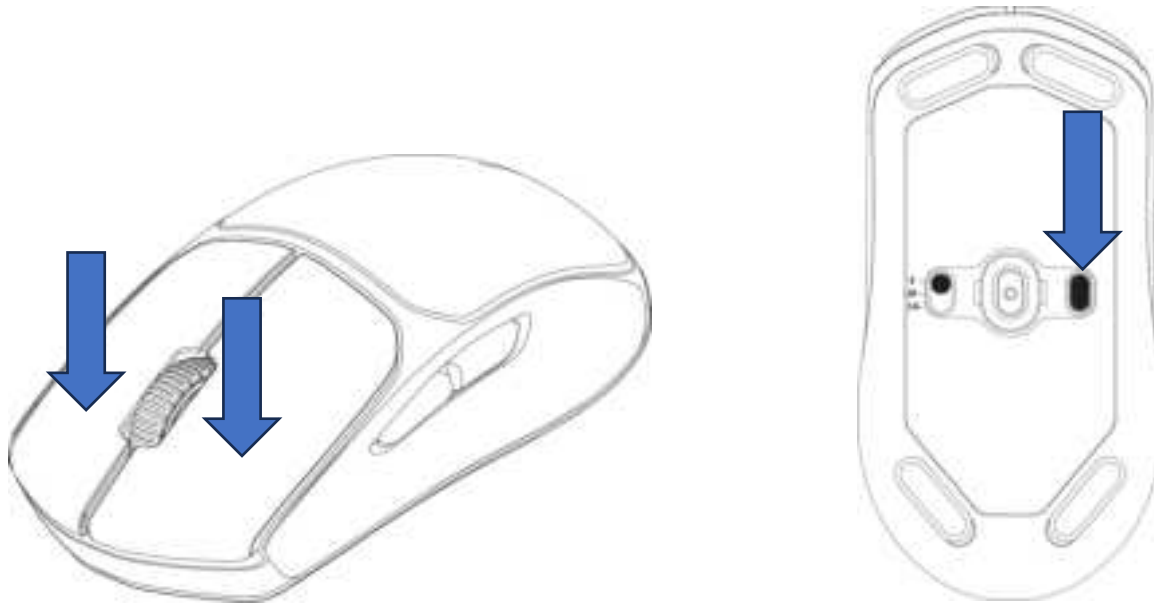
Bluetooth Mode

1. Switch the mouse to Bluetooth power mode.
Mouse will flash blue on first setup.
2. Go to your computer's Bluetooth settings, search and connect to **"Pulsefire Fuse"**. [Do not translate "Pulsefire Fuse", this is the device name]



Bluetooth Pairing

Hold the left click button, right click button, and DPI button simultaneously until the mouse flashes blue.



DPI Presets

There are 4 default DPI presets: 400 DPI (red) | 800 DPI (blue) | 1600 DPI (yellow) | 3200 DPI (green). Max DPI: Up to 12000 DPI.

HyperX NGENUITY Software

To customize lighting, DPI, macro settings, and more, download HyperX NGENUITY software at hyperx.com/ngenuity

[NGENUITY Logo on the far right]

Questions or Setup Issues

Contact the HyperX support team or see user guide at hyperx.com/support

[Compliance Battery/Transmit Power Section – Ask Compliance Team if requires Translation]

Battery Information

1.5V, 1x AAA Battery (included)

Can be replaced by user

Frequency & TX Power Information

Radio Technology: Bluetooth, 2.4GHz

Maximum Transmit Power EIRP

Mouse: $\leq 10\text{mW}$ **Dongle:** $\leq 10\text{mW}$

Wireless Mouse/ 無線滑鼠/无线鼠标

Regulatory Model/型號/型号: HXMS235

USB Wireless Dongle /USB 無線訊號轉換器/USB 无线讯号转换器

Regulatory Model/型號/型号: HXWD232