

Smart Wireless Floodlight Camera

Quick Start Guide

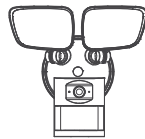
Model: E97P

Welcome

Thank you for choosing our Floodlight Camera.
Getting started is easy.

1. What's Included

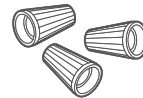
American Version



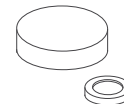
Floodlight Camera



Bracket Screws



Wire Nuts



Silicone Cap



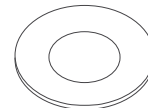
Bracket Screw



Bracket Screw



Wire Nuts

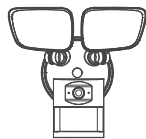


Waterproof Cushion



Quick Start Guide

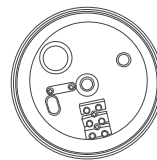
Europe/Australia Version



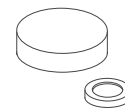
Floodlight Camera



Wall Screws



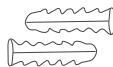
Junction Box



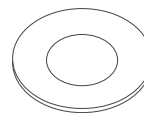
Silicone Cap



Bracket Screw



Screw stopper



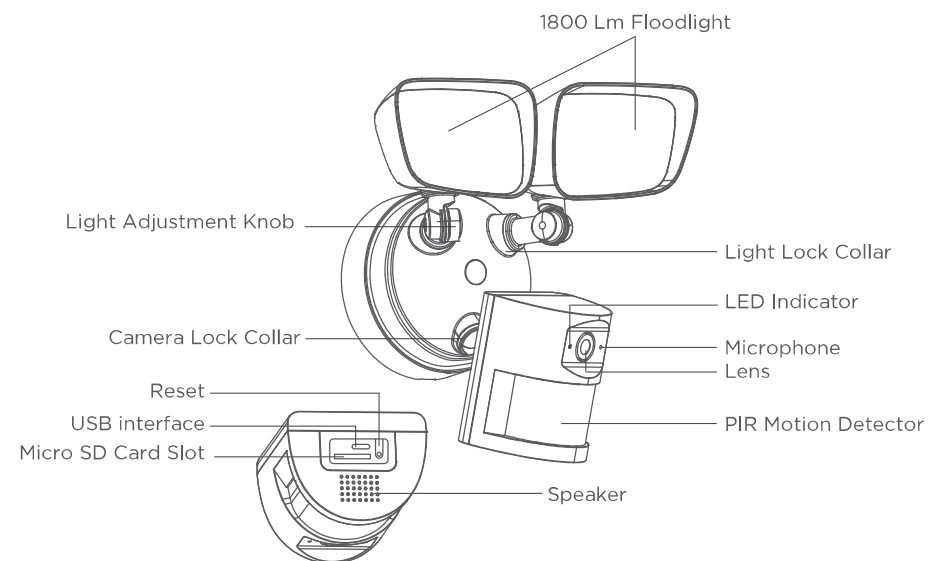
Waterproof Cushion



Quick Start Guide

02 Floodlight Camera

2. Product Details



3. Shut power off at the breaker



If you don't know where your breaker is or how to turn off power to your floodlight circuit, consult with a licensed electrician.



WARNING: Risk of electrical shock

- Disconnect power at the fuse or circuit breaker before installing.
- Verify that the supply voltage is correct. Connect fixture to a AC100V-240V, 50/60 Hz power source.

- Properly ground fixture.
- Always follow code standards when installing wired connections.
If you are outside of North America, installation and wiring must be performed by a licensed electrician.

CAUTION: Risk of fire

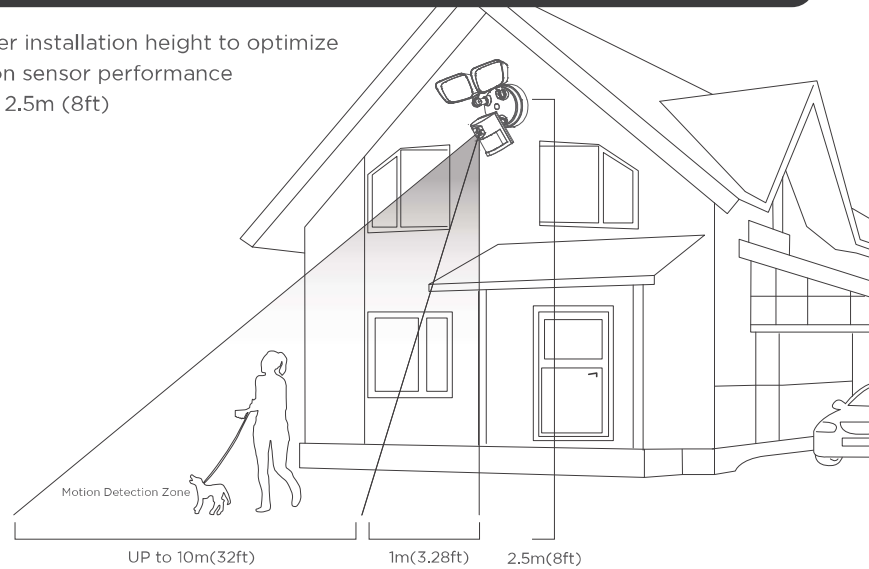
- Do not install near combustible or flammable surfaces.

NOTICE

- Do not connect this light fixture to a dimmer switch or timer.
- Floodlight Camera must be installed on a wall and on a UL listed junction box.

4. Proper Installation Height

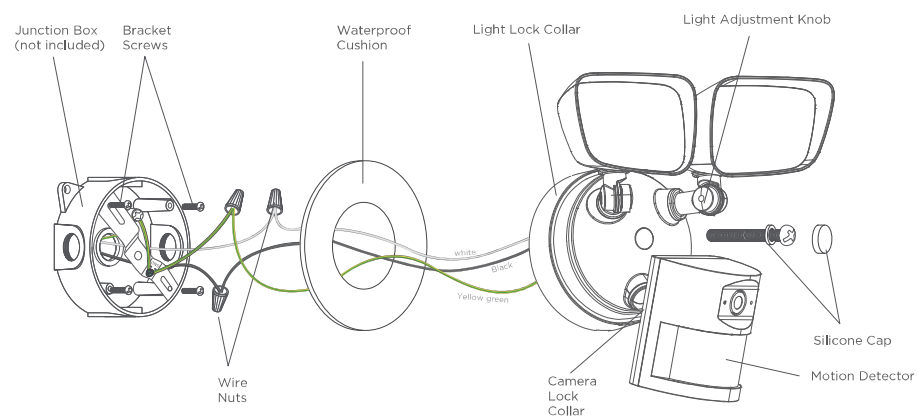
The proper installation height to optimize the motion sensor performance is around 2.5m (8ft)



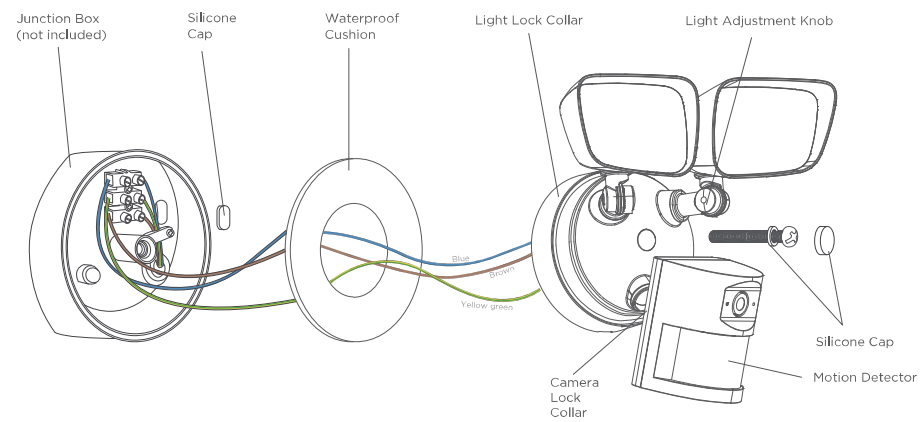
5. How it fits all together

American gauge power cord color: Black , White, Yellow green.

Connect Floodlight Camera cables with same color junction box cables.



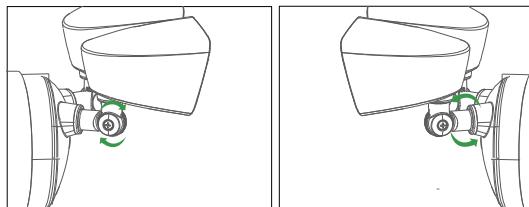
Europe/Australia gauge power cord color: Blue , Brown, Yellow green.
Connect Floodlight Camera cables with same color junction box cables.



6. Prepare your Floodlight Camera for installation

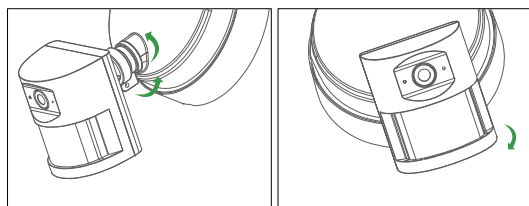
①

Loosen the knobs on the light fixtures to rotate them out of the way and allow access to the mounting screws.



②

According to your actual scene to adjust the view angle of camera



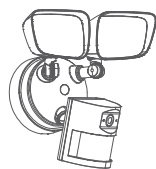
7. Restore power at the breaker



After restoring power, the lights will turn on and your Floodlight Camera will begin speaking to you to let you know it's in setup mode.

8.Connection Preparation

Please install the Floodlight Camera within WiFi covered area to ensure the best working performance.



Camera



(Suggest 30cm-100cm)



Smartphone

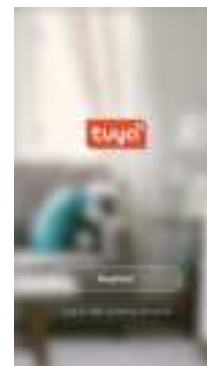
Note:

- Make sure smart phone is connected with your wireless router.
- Please note the camera is only working under 2.4G Wi-Fi, not support 5G Wi-Fi.

- Smartphone (iOS 9.0 or Android 4.4 system and higher version is available. Tablet PC, Mac or Windows PC is not available.
- Please don't use special characters,symbols to name the WiFi and its Password.

9. Get the APP and Account

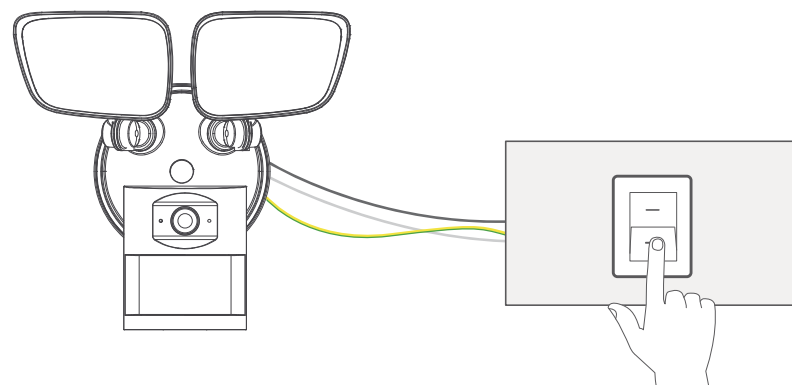
For the best experience, please download the 'TuyaSmart' APP to your smartphone from App Store or Google Play Store, or you can also scan the QR code below, the APP icon will be displayed after installed successfully.



Launch the app from your smartphone and click to register and then sign in. Follow the on-screen instructions.

10. Connect the power to the camera

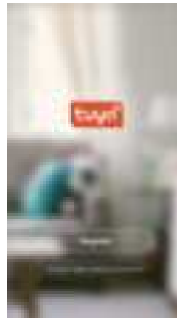
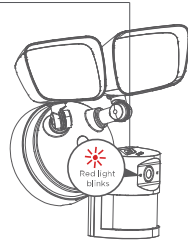
After installation, switch on the button.



11. Set up your camera

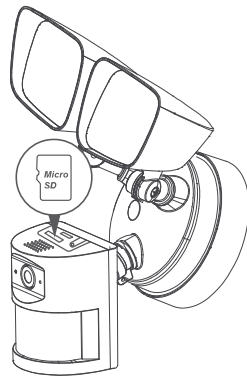
- Power the device on and make sure the indicator is red and flashing quickly or a prompt tone is heard.
- If the indicator is not red and flashing quickly, use the reset button to press the reset button of camera above 5 seconds, then release the button, a red LED on the front of camera will blink quickly.
- Follow App's instructions to complete network pairing process, the device will connect to your Wi-Fi network successfully.
- The blue light is on, camera is ready for viewing.

Press the Reset button for above
5 seconds to start Reset processing




11. Micro SD card

- To ensure SD card video recording works steady, we recommend Class 10 or higher speed Micro SD card.
- To make sure the device works normally, please format the SD card to FAT32 before the first time use.
- Before insert or pull out the SD card, please power off the device.
Insert the SD card properly into the slot as below.



12. APP Details



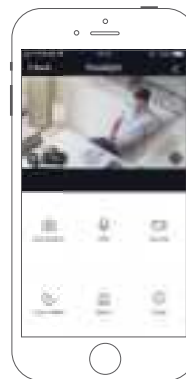
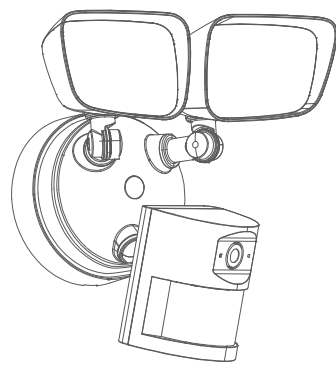
Labels pointing to the app interface:

- Settings
- Resolution change
- Full screen
- Listen
- Screenshot
- Record
- Talk
- Local Video
- Lamp
- alarm

Sceenshot	Photos saved in mobile phone
Talk and Listen	If need two way audio, please set in "Settings"->"Basic function settings"
Record	Video saved in mobile phone
Local video	Video recorded for motion or full time
Lamp	Switch on/off lamp manually
Alarm	Switch for motion detection
Motion	PIR motion zone settings
Alarm\Motion\Lamp	After setting alarm and motion zone, lamp can be triggered to turn on automatically if camera is in night vision mode
Buzzer	Enable manually. Can't be triggered automatically

You're done!

Congratulations! Your camera is set up and ready to go.



Appendix: Camera LED Guide

NO.	LED Status	Camera Status
1	Red LED on	System starting up
2	Red LED blinks	Standby for configuration
3	Blue LED blinks	Network pairing
4	Blue LED on	Camera online



All trademarks are used for reference purposes only.

Thanks again for choosing our Floodlight camera! Make life safe in your hands!
Boost security mobility in your smartphone!

FAQ:

1. Can't find SD card?

First we suggest these famous and popular brands, like Samsung, SanDisk, Kingston etc. with at least class 10.

Second, please format them to FAT32, this is the only format that camera can support.

2. Floodlight can not turn on automatically?

We designed to be triggered only at night, Before that, please make sure "Alarm" and "Motion" are setted well.

Please also make sure the IR LED turned on, means the video are black and white.

3. Buzzer can not turn on automatically?

Buzzer are designed to turn on manually to avoid disturbing your neighbors.

4. Two way audio are not working?

Please select "Two-way talk" first in "Settings-Basic function settings"

5. You can not get the video for a long time?

Please first make sure this camera are installed as close as your router. Cameras are not suggested to install seperated with router for two thick walls.

Please test your network and make sure it works well.

For more questions, please send from the APP "Settings"->"FAQ&Feedback"

FCC Caution.

This device complies with part 15 of the FCC Rules. Operation is subject to the following two conditions:

- (1) This device may not cause harmful interference, and
- (2) this device must accept any interference received, including interference that may cause undesired operation.

Any Changes or modifications not expressly approved by the party responsible for compliance could void the user's authority to operate the equipment.

Note: This equipment has been tested and found to comply with the limits for a Class B digital device, pursuant to part 15 of the FCC Rules. These limits are designed to provide reasonable protection against harmful interference in a residential installation. This equipment generates uses and can radiate radio frequency energy and, if not installed and used in accordance with the instructions, may cause harmful interference to radio communications. However, there is no guarantee that interference will not occur in a particular installation. If this equipment does cause harmful interference to radio or television reception, which can be determined by turning the equipment off and on, the user is encouraged to try to correct the interference by one or more of the following measures:

- Reorient or relocate the receiving antenna.
- Increase the separation between the equipment and receiver.
- Connect the equipment into an outlet on a circuit different from that to which the receiver is connected.
- Consult the dealer or an experienced radio/TV technician for help.

This equipment complies with FCC radiation exposure limits set forth for an uncontrolled environment. This equipment should be installed and operated with minimum distance 20cm between the radiator & your body.