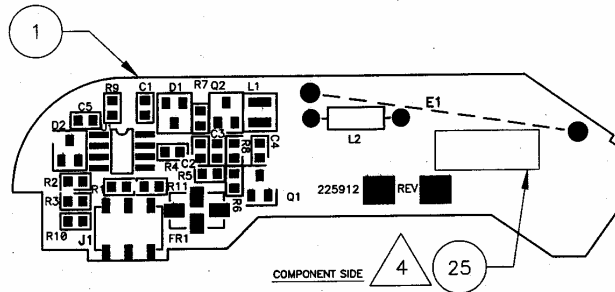
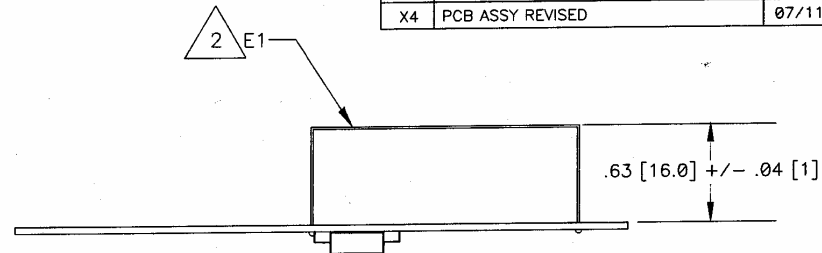


SECTION 5

NOTES: (UNLESS OTHERWISE SPECIFIED)

- 1 MARK ASSEMBLY DASH NUMBER AND REVISION LETTER USING .12 [3.0] HIGH CHARACTERS, PERMANENT INK, CONTRASTING COLOR, APPROXIMATELY WHERE SHOWN.
- 2 BEND ANTENNA WIRE, E1 AND SOLDER TO PCB AS SHOWN.
- 3 COAT ENTIRE ASSEMBLY EXCEPT CONNECTOR (J1) WITH CONFORMAL COATING (ITEM 24).
- 4 PLACE DATE CODE LABEL (ITEM 25) APPROXIMATELY WHERE SHOWN.

REVISIONS			
REV	DESCRIPTION	DATE	APPROVED
X1	ENGINEERING RELEASE		
X2	PCB REVISED	06/20/06	
X3	PCB REVISED	07/09/06	
X4	PCB ASSY REVISED	07/11/06	



SEE SEPARATE PARTS LIST

<small>UNLESS OTHERWISE NOTED ALL DIMENSIONS ARE INCHES [MM]: TOLERANCES: DECIMALS ANGLES: +/- .5 DEG XX +/- .02 [.5] ROUNDNESS: +/- .005 [.13] XXX +/- .005 [.13] FLATNESS: +/- .005 [.13] CONCENTRICITY: +/- .005 [.13]</small>		PROJECT:		 2855 CORTE DEL NOGAL • CARLSBAD, CA 92009	
		CAD OPERATOR:	DATE	TITLE: DXS/DXT-73	
		KMC	04/27/06		
		CHECKED:	DATE	SIZE: B	
MATERIAL:		APPROVED:	DATE	DRAWING NO.: 225912	
FINISH:		APPROVED:	DATE	REV.: X4	
		SCALE: NONE		DO NOT SCALE DRAWING	
				SHEET: 1 OF 1	