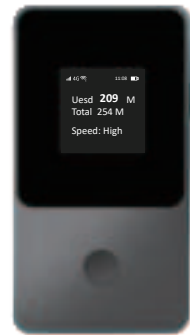
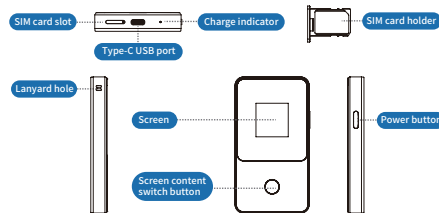


# Global Pocket WiFi T8

## User Manual



### Product appearance and interface description



#### Power button

Long press for 3 seconds to turn on or off the device.  
Short press the power button to light up or turn off the screen.

#### SIM card slot

In the off state, you can insert your nano SIM card(4FF) for use.  
Insert the card pin in to the small hole on SIM card holder to remove the card holder from device, put the SIM card in the holder, and then load the SIM card holder into the device.

This device supports VSIM technology, which can be used without inserting a physical SIM card. To use VSIM, you need to purchase a data package from SP (Service Provider).

#### Type-C USB port

Charge your device by connecting the charging plug via the Tye-C USB cable.

#### Screen

The following information are displayed on screen: 3G/4G network signal strength, usage of data plan, WiFi SSD and password etc.

When not operating the device, the screen will go off automatically after 15 seconds, short press the power button to light up/off the screen.

#### Screen content switch button

Press this key to switch between different displays.

### Product specification

Colour	Gray
Dimensions	60mm x 110mm x 13mm
Weight	100g
Battery capacity	3500mAh
Power input	USB TYPE-C DC 5V/1.5A (AC 100V-240V)
Charging time	~3.5h
Normal working hours	~15h
Network and bands	Global 2G/3G/4G
	FDD-LTE: B2/B4/B5/B7B12/B13/B17/B25/B26/B66
	TDD-LTE:B41
	3G WCDMA/HSPA:B1/B2/B4/B5/B8
Peak Rate	2G GPRS/EDGE:B2/B3/B5/B8
	CAT4, DL 150Mbps, UL 50Mbps
WiFi	802.11 b/g/n 2.4G
WiFi users	Max 8 concurrent connected users

Notes:

- ① The charging environment temperature is between 0°C-45°C; After one year of normal use of charging and discharging, the battery capacity will be reduced by about 20%.
- ② Please do not over discharge or over charge the battery. When the device is not used for a long time, suggest you charge the device once 2 months.
- ③ Device heating are normal when working, it can be used normally. The device can be placed in a cool and ventilated place to do correspond-ing cooling treatment.

### Steps for using the device

#### Step 1: Power on

- 1.1 Press and hold the power button to start the device.
- 1.2 (Optional) Press the content switch button to display the "purchase package" QR code.
- 1.3 (Optional) Scan the QR code with your mobile phone to visit the online shop .

#### Step2: Purchase data package(optional)

- 2.1 Scan the QR code from step 1 again in online shop to perform device binding.
- 2.2 Choose the suitable data package in online shop and pay for it. After purchasing a traffic package, please reboot your device to make the new data package effective.

#### Step3: Connect to WiFi hotspot

- 3.1 Press the content switch button to display the WiFi SSID, PW on the screen, set the SSID, password of WiFi connection in the settings of your phone or computer, and connect to WiFi hotspot.
- 3.2 If your phone supports scanning QR code to connect to WiFi, press the content switch button to show "set WiFi" QR code on the screen, use your phone's camera to scan the QR code to set WiFi connection.

Note: If you have purchased a data package at the same time as the device, you can only perform step 1.1 to turn on the device and perform step 3 to connect WiFi, you can access the internet then.

#### Step4: Check usage of data package

To check usage, press the content switch button to display the usage information on the screen.

#### Step 5: Modify WiFi SSID , Password (optional)

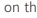
If you need to modify the SSD, Password of WiFi , your mobie phone or computer need to access the devices' WiFi hotspot, then login 192.168.100.1 with web browser . The default login user name: admin, default login password: admin.

### Quick Troubleshooting

#### 1.WiFi device can't be powered on / off

- ① Please check that a properly working charging cable and charging plug are used and charge for a period of time before trying to boot the device.
- ② Please check the charging port for any abnormalities such as looseness.
- ③ Please confirm whether the power button is loose or obvious damaged, if there are abnormalities, please return for testing and repairing.
- ④ After confirming the above is to use undamaged charging cable and charging plug, the device can't be charged, the device may be in water or hardware abnormalities, please Please return for testing and repairing.

#### 2.The WiFi terminal cannot access internet

- ① Turn the device off and on again, when the 4G  appears on the upper left corner of the screen, then reconnect to the WiFi to use the network.
- ② Check the network signal strength indicator in the upper left corner of the device screen, and when it indicates a weak network signal,
- ③ please change the device location and try again.  
Check the power of the device, if the power is insufficient, please charge it on time.

#### 3.WiFi network detected but unable to connect to the network

Please check if the WiFi SSID, Password are set correctly.

#### 4.Device's WiFi cannot be detected

- ① Please turn off your phone's smart WiFi connection, or suggest you try searching with another phone.
- ② If WiFi signal still cannot be detected, please contact customer service.

#### 5.Network is connected but cannot access the internet

Please contact with customer service.

### Safety Precautions

1. Do not disassemble the device (including battery) by yourself.
2. Do not subject the equipment to violent shocks and vibrations.
3. Do not use strong chemicals, cleaning agents and strong detergents to clean equipment and accessories.
4. To clean the device, please turn off and disconnect the device from the charging cable first.
5. When the device is finished charging, disconnect the device from the charging cable and unplug the charging head from the power socket.
6. Do not place the device around heating equipment such as microwave ovens, ovens, etc.
7. When the charging cable is damaged, do not continue to use.
8. Do not throw the device into fire.
9. Do not replace the device parts (including the battery) by yourself.
10. Please comply with local laws regarding the disposal of electronic device, batteries and accessories, and support recycling initiatives.
11. Please do not dispose of this equipment, batteries and accessories as ordinary household waste.

### FCC Warning

This device complies with Part 15 of the FCC Rules. Operation is subject to the following two conditions:

(1) this device may not cause harmful interference, and (2) this device must accept any interference received, including interference that may cause undesired operation.

Changes or modifications not expressly approved by the party responsible for compliance could void the user's authority to operate the equipment.

Notes: This equipment has been tested and found to comply with the limits for a Class B digital device, pursuant to Part 15 of the FCC Rules. These limits are designed to provide reasonable protection against harmful interference in a residential installation. This equipment generates uses and can radiate radio frequency energy and, if not

### FCC Warning

installed and used in accordance with the instructions, may cause harmful interference to radio communications. However, there is no guarantee that interference will not occur in a particular installation. If this equipment does cause harmful interference to radio or television reception, which can be determined by turning the equipment off and on, the user is encouraged to try to correct the interference by one or more of the following measures:

- Reorient or relocate the receiving antenna.
- Increase the separation between the equipment and receiver.
- Connect the equipment into an outlet on a circuit different from that to which the receiver is connected.
- Consult the dealer or an experienced radio/TV technician for help.

Notes: This device and its antenna(s) must not be co-located or operation in conjunction with any other antenna or transmitter.

### Specific Absorption Rate (SAR) information

This smart phone meets the government's requirements for exposure to radio waves. The guidelines are based on standards that were developed by independent scientific organizations through periodic and thorough evaluation of scientific studies. The standards include a substantial safety margin designed to assure the safety of all persons regardless of age or health.

This cuipment should be installed and operated with minimum distance of 10mm the radiator your body. The body-worn test distance is 10mm.

#### Disclaimer:

Please be aware that if you do not use the device in accordance with this User Guide, we assume no responsibility.