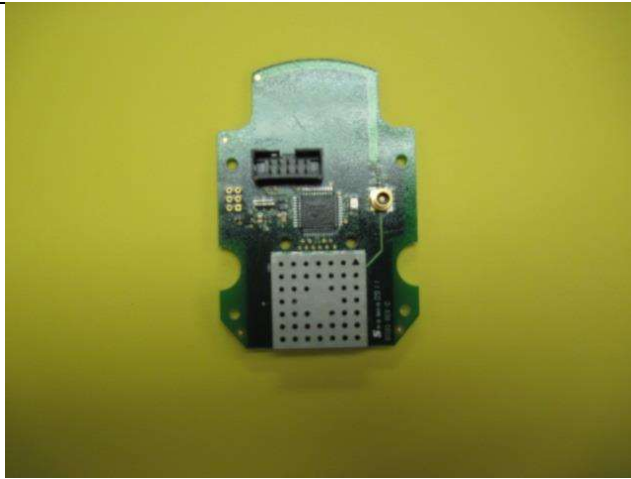


## **2.3 - Associated Antenna Description**

There are multiple antennas associated with the product:

1. PCB trace antenna with a 5.7dBi maximum gain (measured over a conducting ground plane).
2. MA-CC60-60 Dual Beam Antenna with a 3.5dBi gain (Data sheet)
3. MA-CL67-15 multi band directional Panel antenna with 8.5dBi gain (Data sheet)
4. MA-CL92-5 Quasi-Omni Panel antenna with 4.5dBi gain (Data sheet)
5. MA-CM36-15 multi-band omni directional antenna with 2dBi gain (Data sheet).



1. Trace Antenna



4. MA-CM36-15 (Typical antenna installation)



2. MA-CL67-15 and MA-CL92-5 (Typical antenna installation)



3. MA-CC60-60 (Typical antenna installation)

Prepared For: Allegion	EUT: AD 900MHz Module V3	
	Model #: COMAD400V3	
	Serial #: LSR905141900033A (Trace antenna)	
	LSR906141900046A (Antenna connector)	
	LSR906141900037A (Antenna connector)	