

# Huidun

— Enjoy Smart Life —

## H30 Series

<https://www.huidun.hk>

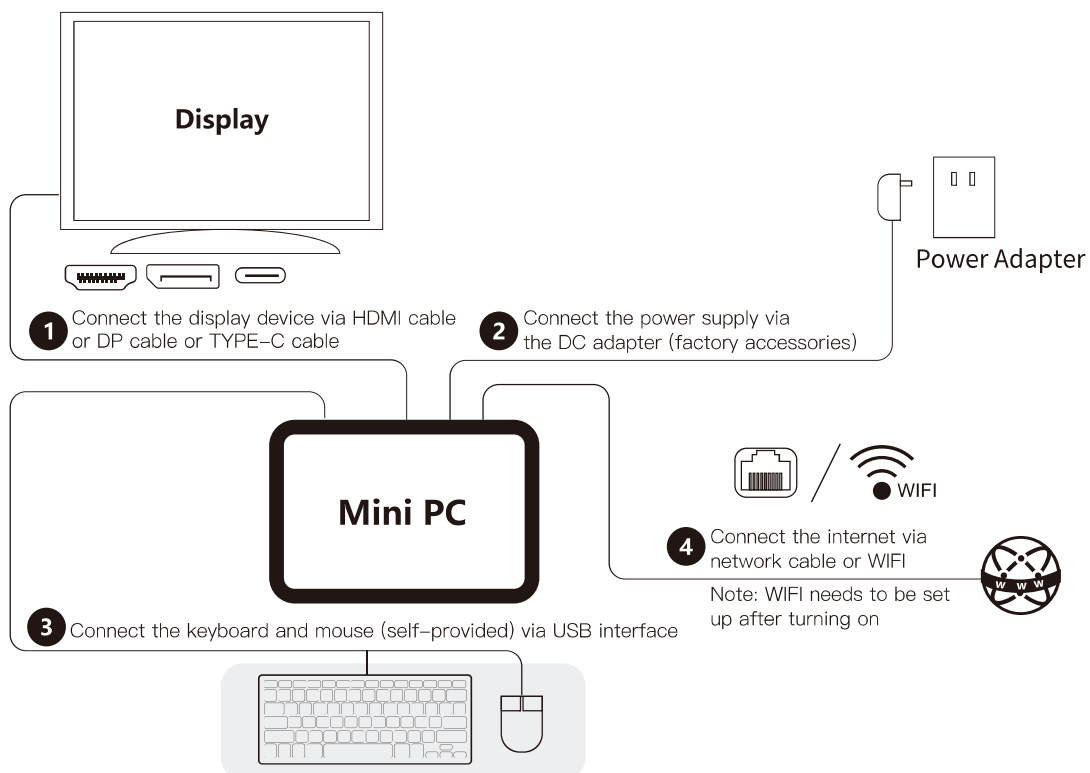
## User Manual

Dear users: Thank you for using this product. For your safety and benefit, Please read this product manual and all the accompanying materials carefully before using the product!

### Disclaimer:

1. Please make sure to use the original power supply, and our company will not assume any responsibility for any problems or failures caused by any third-party adapter.
2. Users can use music videos, pictures and software provided by third parties, but we do not assume any responsibility for copyright issues or software failures.
3. If the product breaks down, we will strictly abide by the warranty clauses, but we will not assume any responsibility for any property loss or economic loss that may be caused during use.
4. The equipment is supplied with the built-in software at the factory, which can be used after actual testing. However, if it is deleted or not deleted when looking for compatibility or other issues, it will not incur any impact on the machine. Please note that it is not an issue related to product quality.
5. The company reserves the right to improve the product. If there is any change in product specification and design, no further notice is required! Please refer to the real object.

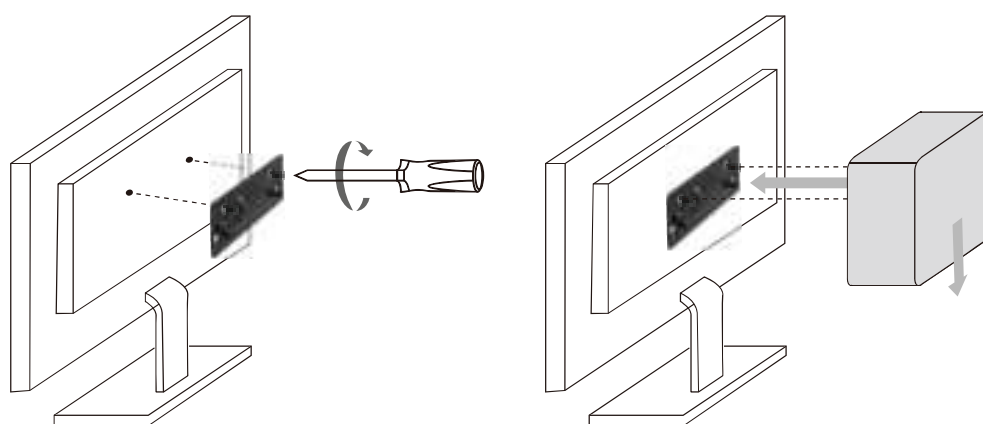
## Quick Installation



## Packing List

Mini PC*1	Power Adapter*1
User Manual*1	HDMI Cable*1
Mini PC copper fixing screws*2	VESA Mounting Bracket Screws*2
VESA Mounting Bracket*1	

## Installation of VESA bracket



## Tips and FAQ

### 1. Turn off your Mini PC

If your Mini PC does not respond, press the power button for at least (4–6) seconds until your Mini PC is turned off.

### 2. Boot into the system for the first time

- When you start-up your PC for the first time, you will be guided to configure your Windows operating system.

- Start-up your Mini PC for the first time: Press the PC's power button. Wait for a few minutes until the installation interface appears.

Step 1: Select language/country (region)

Step 2: Select the inputting method, and clicks confirm

Step 3: Select the second inputting method, which can be “skipped”


Step 4: Networking: After selecting wifi, enter password to connect it.

Or choose to plug network cable for connection. (Networking will be updated automatically, and the update process will stay on an interface for a long time, which prolong the start-up time. (Skipping network connections is strongly recommended)

Step 5: Accept License Agreement

Step 6: Set User Name and Password Once the installation process is complete, the desktop will appear.

### 3. Connect WiFi

- Connect Wi-Fi. Connect PC to the Wi-Fi network using the following steps.
- Select the/icon  from the taskbar.
- Click the wifi icon to turn on the wi-fi.
- Select an access point in the list of available Wi-Fi connections. Select one of the connections to start the network connection.

Note: You may be prompted to enter a security key to activate a Wi-Fi connection.

### 4. Enter the BIOS setting

- The BIOS (Basic Input/ Output System) is the first software loaded when the Mini PC starts.
- Enter Bios: Click “Del” or “ESC” key.
- Under normal circumstances, the default BIOS settings apply in most cases to ensure optimum performance. Do not change the default BIOS settings. Except for the following situation.  
(You have installed new system components that require further BIOS settings or update.)
- Warning! Inappropriate BIOS settings may cause instability or startup failure. We strongly recommend that you can only change the BIOS settings with the help of technical service personnel.

## Precautions

1. Please take extra care when executing operations that may cause damage or loss of documents.
2. Pay attention to virus protection during the use of mini-host, and try to use virus firewall.
3. Please turn off the mini-host and disconnect the power supply if you don't use it for a long time.
4. Do not switch on and off the mini-host frequently in a short period of time. It is recommended that the interval between two startup times should be at least 10 seconds, preferably not less than 60 seconds.
5. Pay attention to moisture-proof, and keep the use environment clean and sterilized. If there is dust on the host machine, please wipe it with a dry soft cloth.
6. Avoid direct exposure of strong light to mini-host, and do not approach strong magnetic field.
7. Do not get water, food and other fluids onto the mini-host, and do not pull the data cable, power cord, etc.

## FCC Warning

This device complies with part 15 of the FCC Rules. Operation is subject to the following two conditions: (1) This device may not cause harmful interference, and (2) this device must accept any interference received, including interference that may cause undesired operation.

Any Changes or modifications not expressly approved by the party responsible for compliance could void the user's authority to operate the equipment.

**Note:** This equipment has been tested and found to comply with the limits for a Class B digital device, pursuant to part 15 of the FCC Rules. These limits are designed to provide reasonable protection against harmful interference in a residential installation. This equipment generates uses and can radiate radio frequency energy and, if not installed and used in accordance with the instructions, may cause harmful interference to radio communications. However, there is no guarantee that interference will not occur in a particular installation. If this equipment does cause harmful interference to radio or television reception, which can be determined by turning the equipment off and on, the user is encouraged to try to correct the interference by one or more of the following measures:

- Reorient or relocate the receiving antenna.
- Increase the separation between the equipment and receiver.
- Connect the equipment into an outlet on a circuit different from that to which the receiver is connected.
- Consult the dealer or an experienced radio/TV technician for help.

This equipment complies with FCC radiation exposure limits set forth for an uncontrolled environment. This equipment should be installed and operated with minimum distance 20cm between the radiator & your body.

Manufacturer: Shenzhen Chunhong Technology Co., Ltd  
Address: 1209U8, International Chamber of Commerce  
Center, 168 Fuhua 3rd Road, Fu'an Community, Futian Street,  
Futian District, Shenzhen



Follow Huidun communtiy, a place where you  
can share and discuss with Huidun user  
keep posted with most up-to-day news