

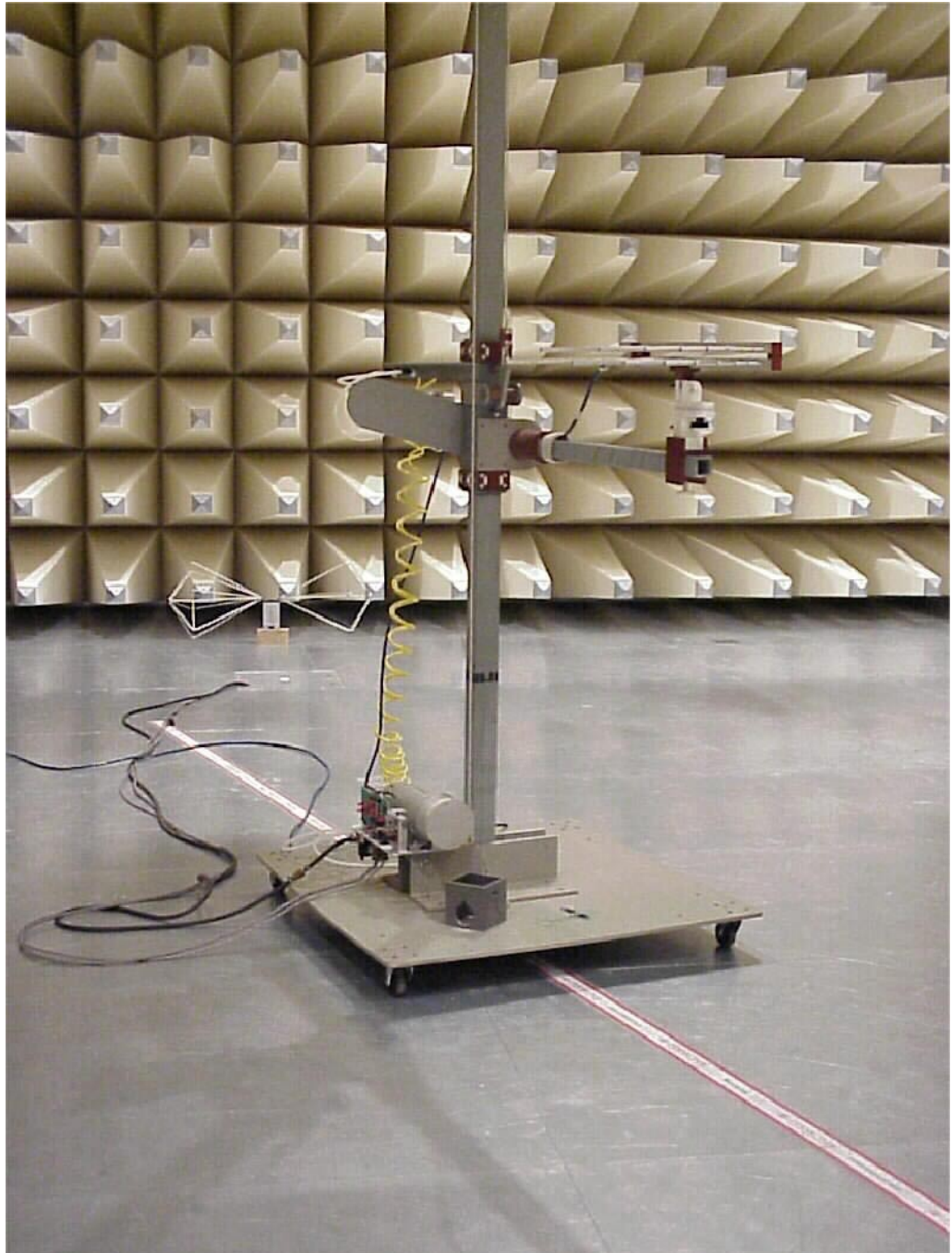
Test site  
RADIATED EMISSIONS

Picture 1: Test sample powered by a laptop for radiated measurements with antenna outside.



Test site  
RADIATED EMISSIONS

Picture 3:





Test site

RADIATED EMISSIONS

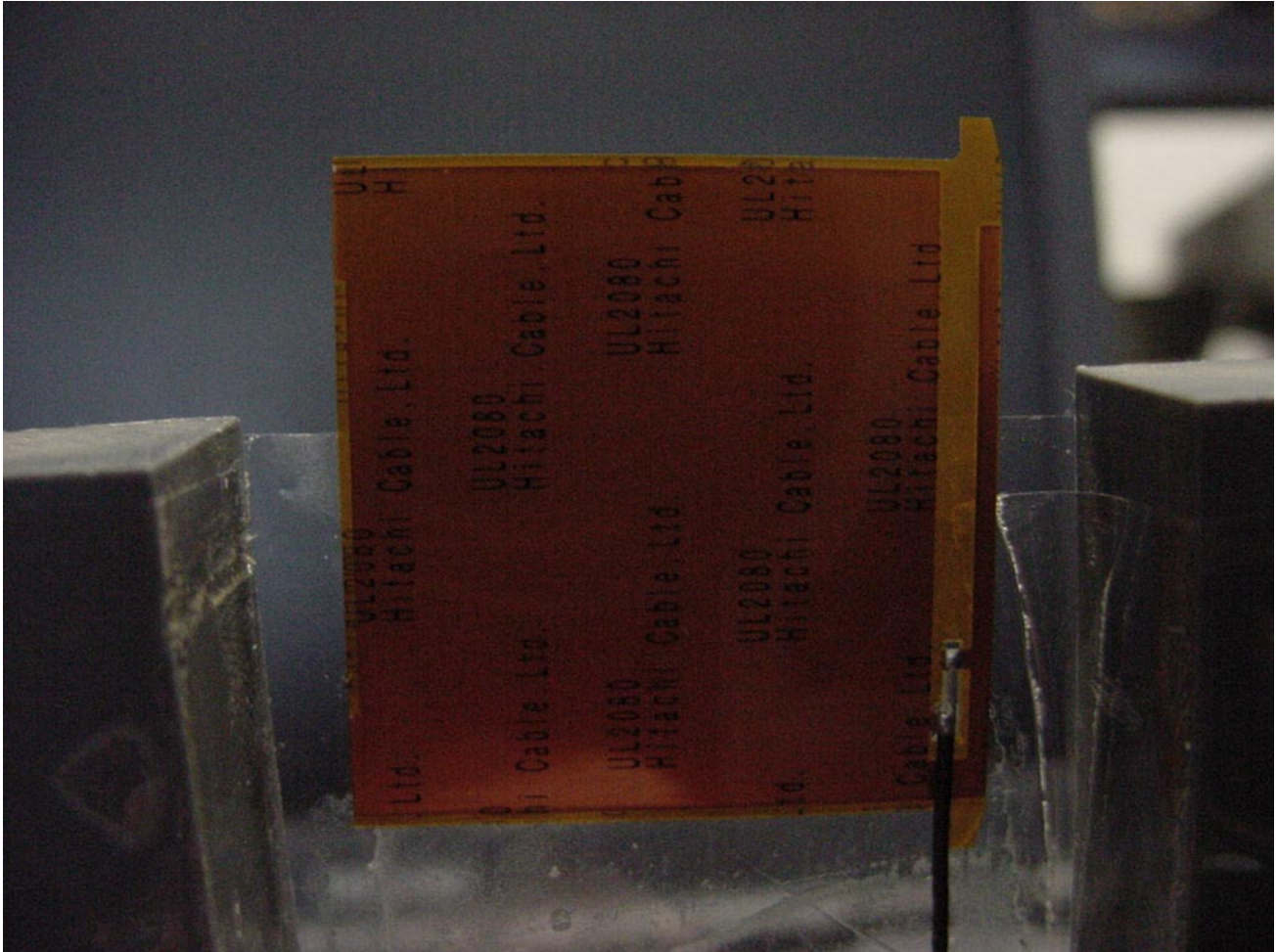
Picture 3: Antenna for WLAN PA3171U-1MPC, type: HTL-004



Test site

RADIATED EMISSIONS

Picture 4: Antenna for WLAN PA3171U-1MPC, tpye: HTL-004





Test site

RADIATED EMISSIONS

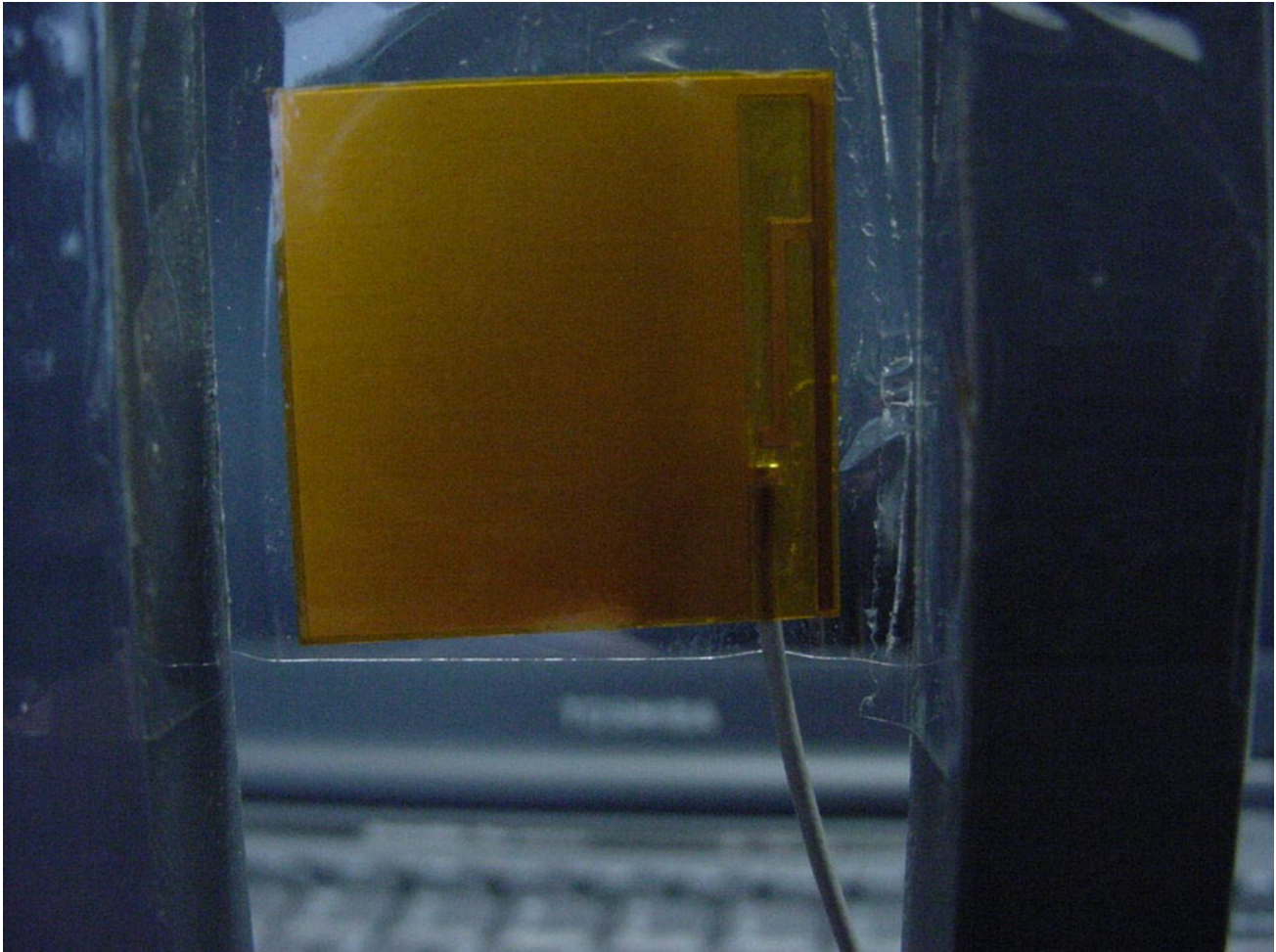
Picture 5: Antenna for WLAN PA3171U-1MPC, type: HTL-008 (Dual-band)



Test site

RADIATED EMISSIONS

Picture 6: Antenna for WLAN PA3171U-1MPC, type: HTL-008 (Dual-band)





Test site

RADIATED EMISSIONS

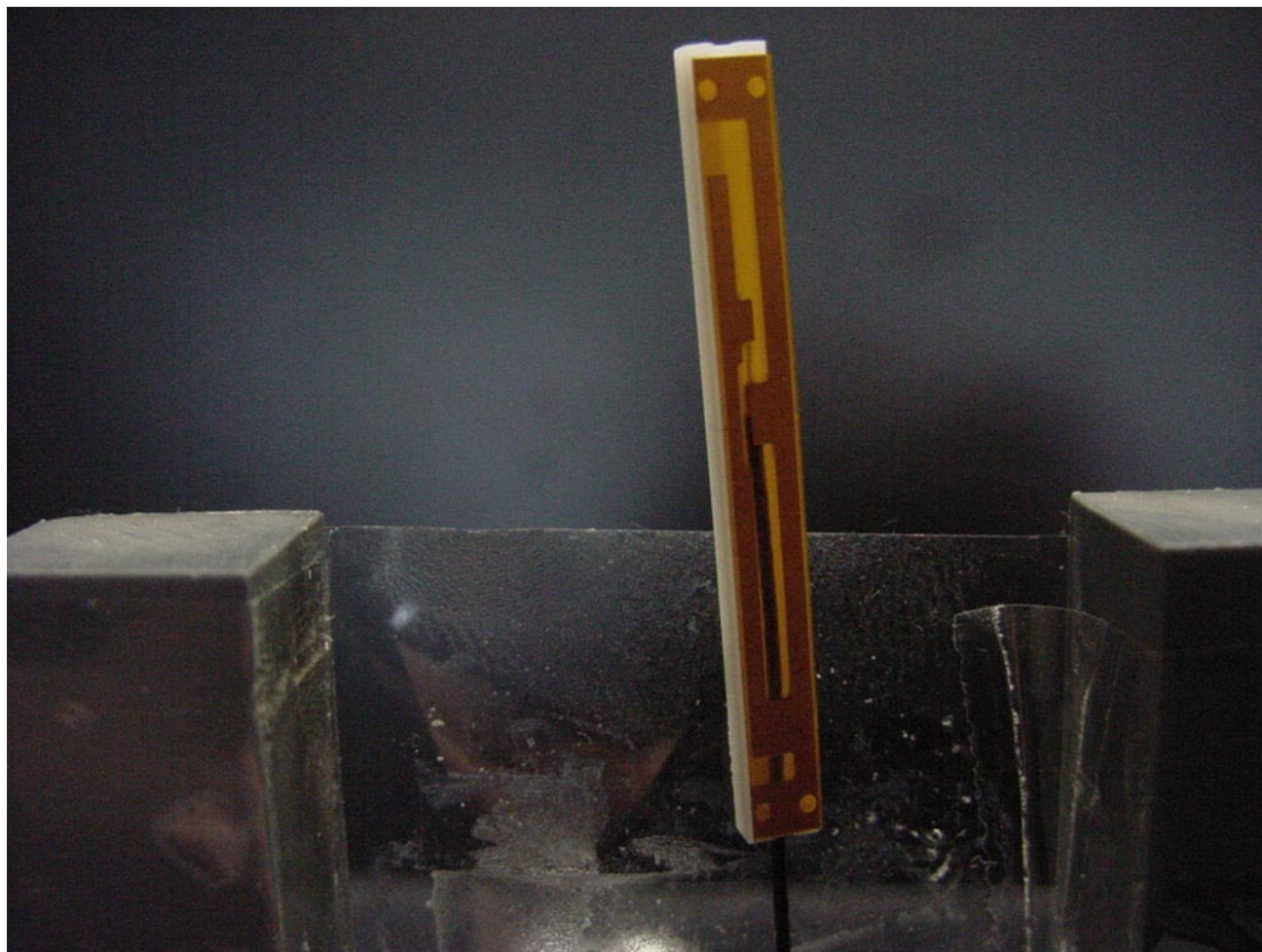
Picture 7: Antenna for WLAN PA3171U-1MPC, type: HTL-007 (Stick ant.)



Test site

RADIATED EMISSIONS

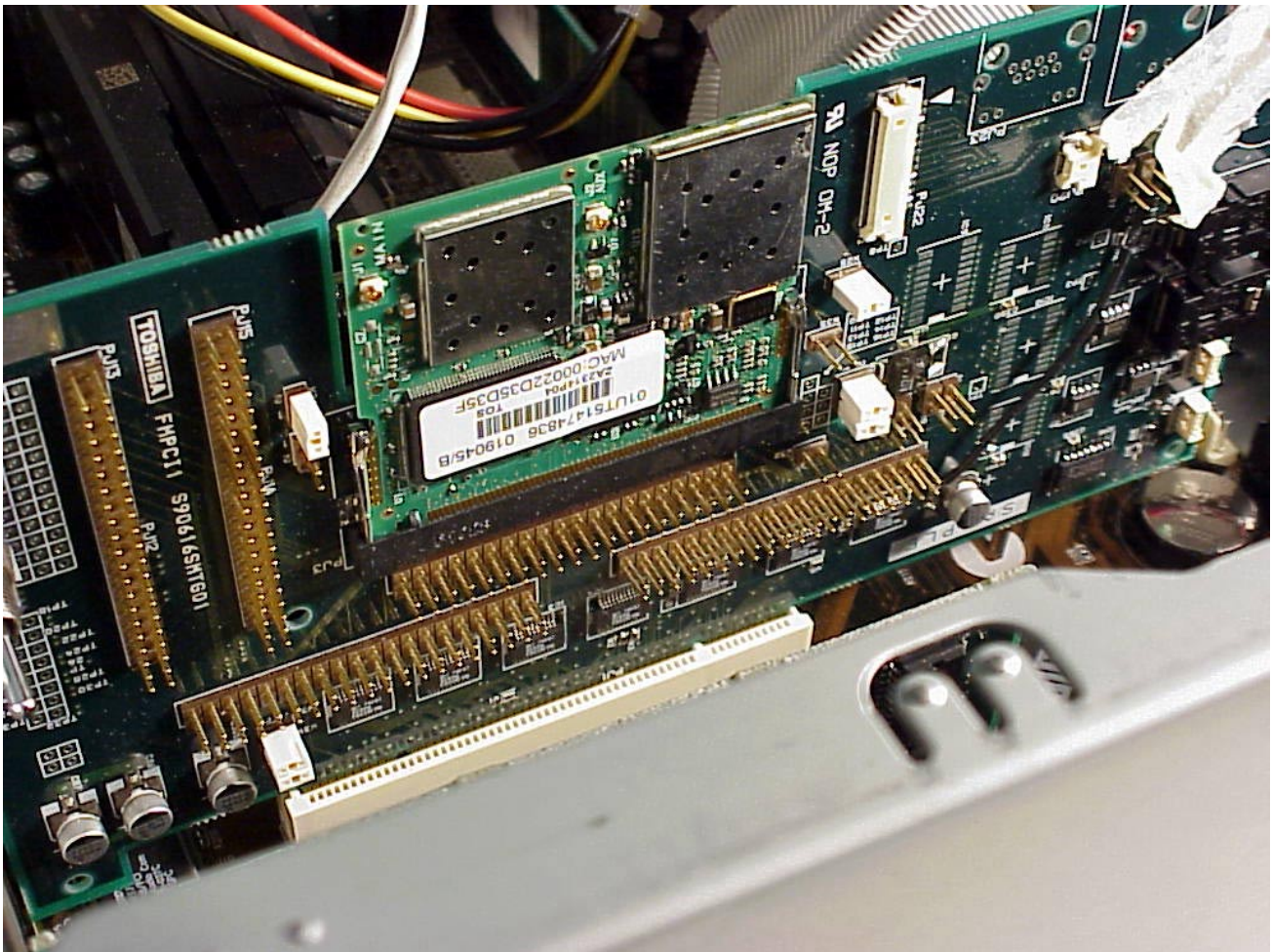
Picture 8: Antenna for WLAN PA3171U-1MPC, type: HTL-007 (Stick ant.)





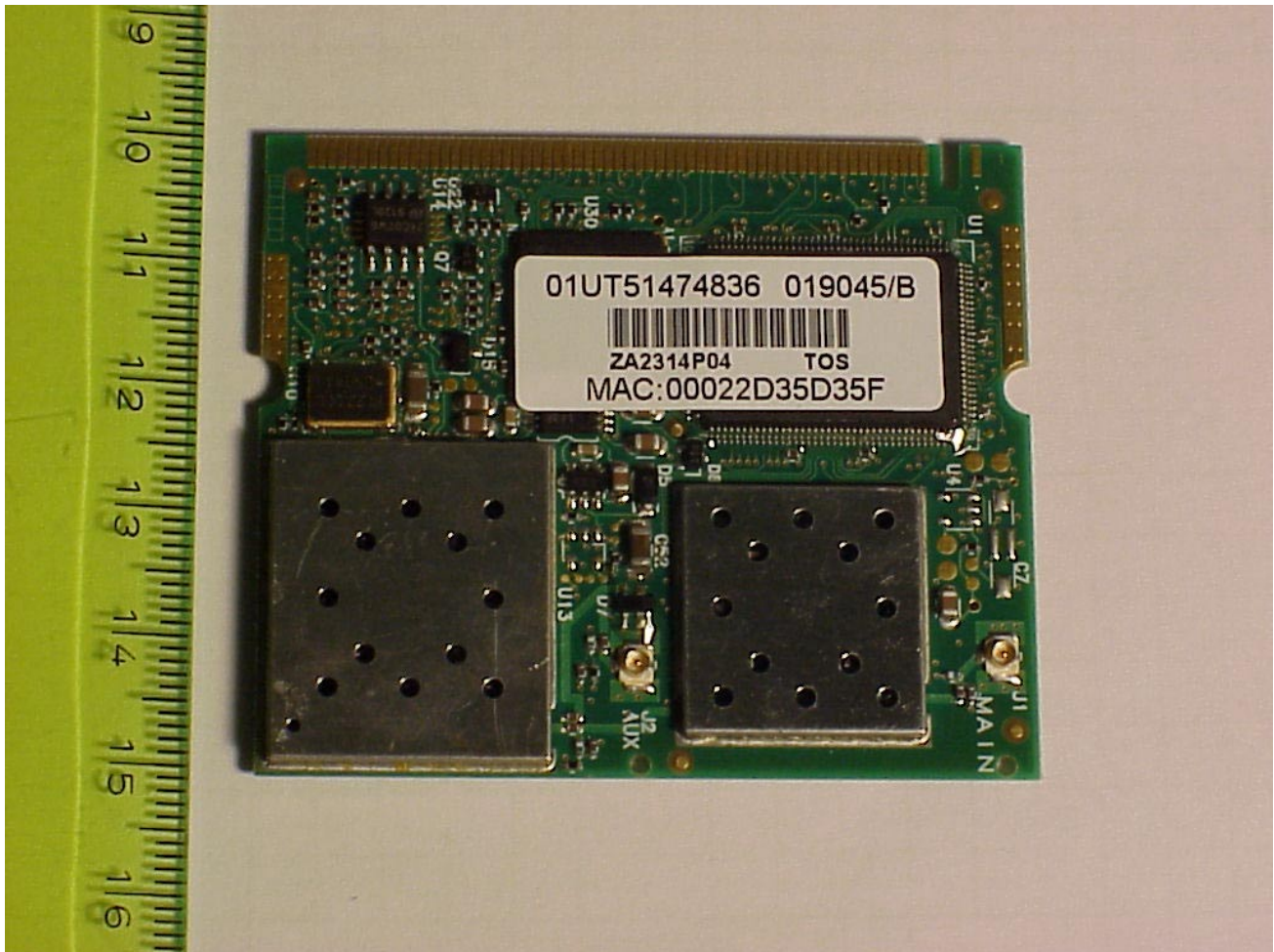
Pictures of the sample

Picture 1: Test sample in Desktop PC carrier card for conducted measurements



Pictures of the sample

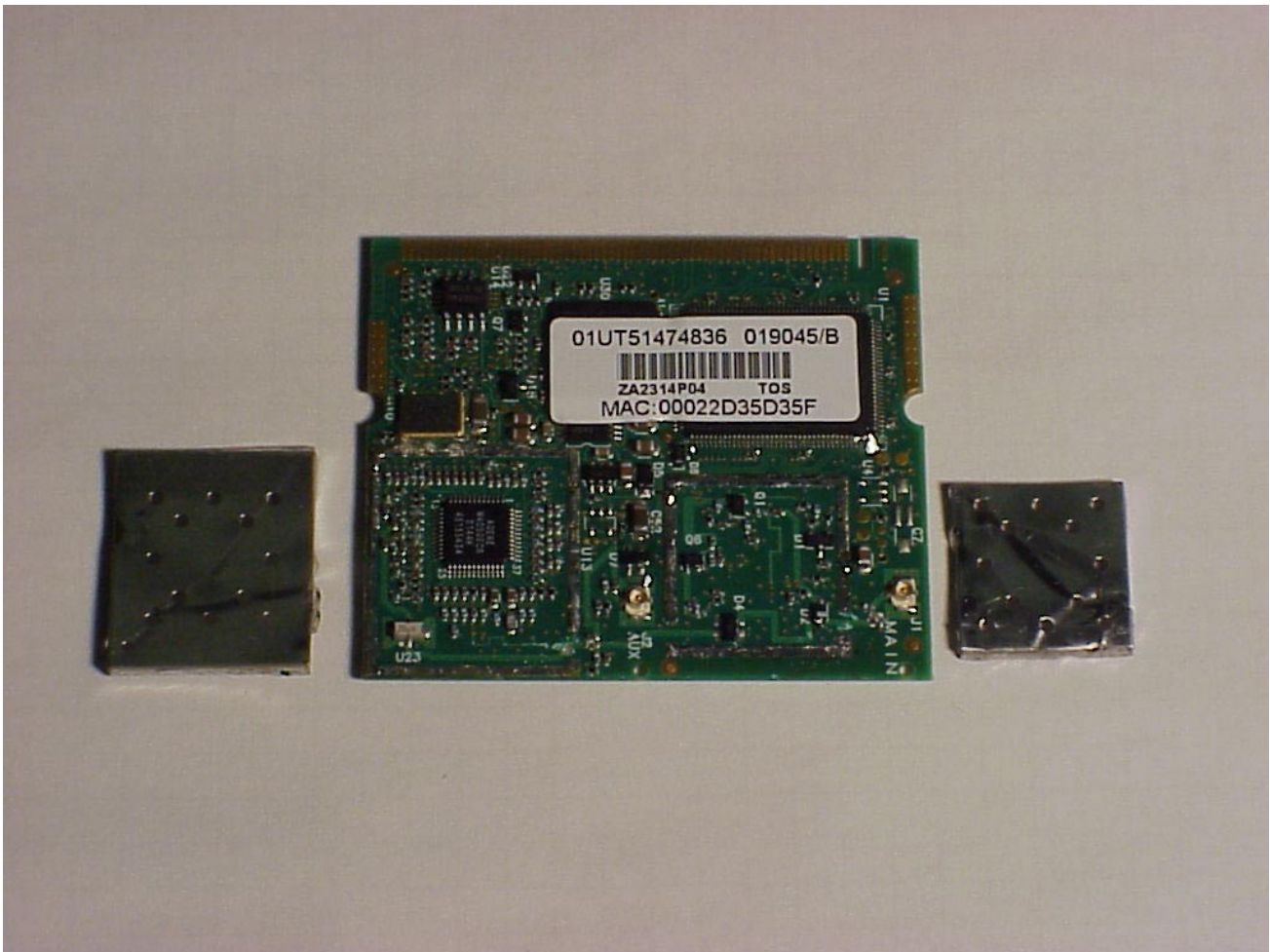
Picture 2: Front side view of WLAN PA3171U-1MPC, shielded





Pictures of the sample

Picture 3: Front side view of WLAN PA3171U-1MPC, unshielded



Pictures of the sample

Picture 4: Rear side view of WLAN PA3171U-1MPC

