

SIRIUS P5

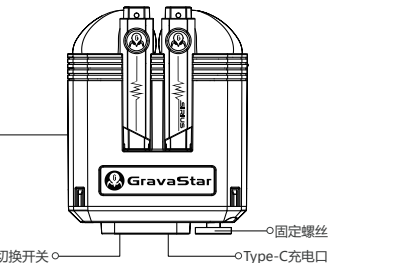
真无线蓝牙耳机 使用说明书



真无线蓝牙耳机

v1.2

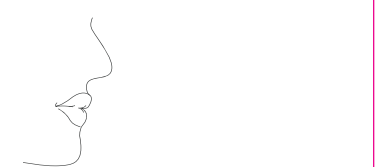
产品简介



1

佩戴耳机

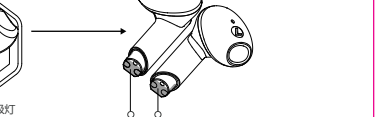
将耳机斜向下轻轻塞入耳道，以轻微能晃头部耳机不晃动为宜（正确佩戴为LOGO朝上）。



充电操作

首次开机使用，请先取出耳机，去除耳机上的隔离膜，将充电盒及耳机充满电。

耳机低电量提醒：电量不足 <= 10%，每5分钟提示音 Not enough energy 一声，红灯闪烁（1s/2次）。



2

基本参数

耳机基本参数

产品类型：Sirius P5
喇叭规格：12mm
降噪模式：ENC通话降噪
电池类型：锂电池
充电时间：1.5小时
耳机电池容量：45mAh
耳机重量：单耳机5g

充电盒基本参数

充电盒电池容量：500mAh
充电时长：2小时

输入参数

输入参数：5V~350mA
输出参数：5V~150mA
音乐播放时间：50%音量持续8小时
待机时间：约80小时
蓝牙版本：蓝牙5.2
蓝牙协议：A2DP, AVRCP, HFP
解码格式：SBC/AAC/APTX
蓝牙连接距离：>10米
灵敏度：105dB +/- 3dB
频响范围：20Hz-20KHz

连接配对



若要连接到蓝牙耳机，请按以下步骤1-4操作。

1. 把充电盒安装到外壳里，并用螺丝刀将螺丝固定。
2. 将耳机充电盒保护膜撕掉，先放入充电盒关闭，再重新打开充电盒。
3. 打开手机蓝牙搜索GravaStar Sirius P5，点击配对。
4. 蓝牙连接成功/断开时提示音 Bluetooth connected/Bluetooth disconnected

3

快捷操作

长按3秒开机

接听/挂断电话/播放/暂停
短按耳机MFB键

上一曲/接听电话

双击耳机MFB键

减小音量

长按左耳MFB键1.5s

激活语音助手

三击左耳MFB键

长按3秒关机

接听/挂断电话/播放/暂停
短按耳机MFB键

下一曲/接听电话

双击耳机MFB键

加大音量

长按右耳MFB键1.5s

游戏模式/音乐模式

三击右耳MFB键

（提示音 Music Mode/ Gaming Mode延迟48ms）

4

灯光提示

充电盒指示灯

复位键 / RGB灯切换开关



单击更换灯效，双击关闭灯光

● 充电盒指示灯：
○ 充电中：≤30%红色 / >30%绿色呼吸效果
○ 充满电：绿灯常亮

● 充电电量显示：开盒盖/耳机取放

○ 红色：电量在30%以下

○ 绿色：电量在30%以上

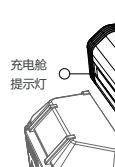
● 耳机置于充电盒内，打开顶盖，长按充电盒底部按键5S耳机恢复出厂设置

5

外壳安装

充电盒指示灯

复位键 / RGB灯切换开关



单击更换灯效，双击关闭灯光

● 充电盒指示灯：
○ 充电中：≤30%红色 / >30%绿色呼吸效果
○ 充满电：绿灯常亮

● 充电电量显示：开盒盖/耳机取放

○ 红色：电量在30%以下

○ 绿色：电量在30%以上

● 耳机置于充电盒内，打开顶盖，长按充电盒底部按键5S耳机恢复出厂设置

6

常见问题及解决方案

问题描述

不开机
不关机
耳机不充电
搜索不到耳机

造成原因
电量耗尽
错误操作或耳机未充电
耳机与充电盒接触处脏污
耳机没有进入被搜索状态

问题解决方法
充电即可
耳机放充电盒即可
擦拭干净
将耳机进入被搜索状态

注意事项

警告

1. 请勿以任理由拆开、维修或改装耳机，否则可能会导致火灾甚至造成损坏本产品。
2. 工作温度：10°C-60°C。
3. 使用产品指示灯时，请避开儿童或动物的眼睛。
4. 请勿在潮湿天气下使用本产品，潮湿可能导致设备工作异常，并增加触电的危险。
5. 请勿使用酒精或其他挥发性液体擦拭本产品。
6. 请勿将本产品与液体接触。

注意

1. 使用产品前请仔细阅读本使用说明书并妥善保管。
2. 首次使用时，请先将本产品充满电。
3. 如果产品长期（超过2个星期）不用，请对其充电。
4. 必须选择正规厂家生产且经过国家CCC认证的充电器。
5. 长时间连续使用耳机有损听力，请合理控制使用时间及音量。
6. 使用耳机时会降低对外界声音的感知力，请不要在可能威胁到安全的环境中使用耳机。

7

保修卡

重力星球SIRIUS蓝牙耳机售后服务承诺：

严格按照《中华人民共和国消费者权益保护法》、《中华人民共和国产品质量法》实行售后三包服务。

服务内容包括：

1. 自您签收之日起7日内，本产品出现故障：经由重力星球售后服务中心确定为产品质量问题，可享受修理、更换、退货的服务。

2. 自您签收之日起1年内，本产品出现故障：经由重力星球售后服务中心确定为产品质量问题，可享受修理的服务。

保修卡

用户信息

联系电话

联系地址

产品名称

产品型号

购买日期

销售单位

订单编号

同时连接两台智能设备，实时便捷切换使用

操作方法：

1. 将A设备（例如苹果手机）打开蓝牙搜索到GravaStar Sirius P5，点击配对，配对成功后点击“断开”连接

2. 将B设备（例如电脑、安卓手机）打开蓝牙搜索到GravaStar Sirius P5，点击配对，配对成功后把A设备蓝牙打开，即可实现一拖二设备。

8

耳机一拖二设备连接方法

支持操作系统：

iOS Android Windows

功能：

同时连接两台智能设备，实时便捷切换使用

操作方法：

1. 将A设备（例如苹果手机）打开蓝牙搜索到GravaStar Sirius P5，点击配对，配对成功后点击“断开”连接

2. 将B设备（例如电脑、安卓手机）打开蓝牙搜索到GravaStar Sirius P5，点击配对，配对成功后把A设备蓝牙打开，即可实现一拖二设备。

售后服务与支持

重力星球SIRIUS蓝牙耳机售后服务承诺：

严格按照《中华人民共和国消费者权益保护法》、《中华人民共和国产品质量法》实行售后三包服务。

服务内容包括：

1. 自您签收之日起7日内，本产品出现故障：经由重力星球售后服务中心确定为产品质量问题，可享受修理、更换、退货的服务。

2. 自您签收之日起1年内，本产品出现故障：经由重力星球售后服务中心确定为产品质量问题，可享受修理的服务。

若有售后需求，请联系重力星球客服

制造商：深圳市拉野创想有限公司

制造地址：深圳市宝安区西乡街道西乡社区西乡大道3609号深圳湾科技园二区栋A座1715-1721

网址：www.gravastar.com

售后电话：400-6616-139

使用产品前请仔细阅读本说明书，并妥善保管。

9

SIRIUS P5

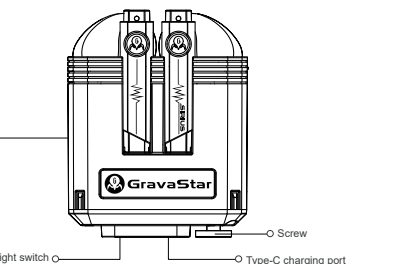
True Wireless Earbuds User Manual



真无线蓝牙耳机

v1.2

Product Info



1

Wearing Earbuds

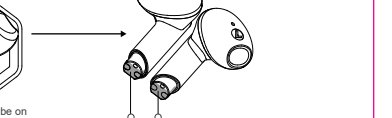
Put the earbuds downward gently into the ear canal, shake your head lightly and the earbuds will stay still. When you wear the earbuds correctly, the LOGO should face up).



Charging

The first time you use, please take out earbuds, remove the isolation film on the earbuds, get the charging case and earbuds fully charged first.

Low battery reminder: when the battery is lower than 10%, you will hear the cue tone "Not enough energy" in every 5 minutes, and see the red light flashes (2 times / s).



2

Tech Specs

Model: Sirius P5

Dynamic Driver: 12mm

Noise Canceling: Environment Noise Canceling (ENC)

Battery Type: Polymer Lithium-ion battery

Earbuds Charging Time: 1.5 hours

Single Earbuds Battery Capacity: 45 mAh

Single Earbuds Weight: 5g

Charging Case Battery Capacity: 500 mAh

Charging Case Charging Time: 2 hours

Input: 5V~350mA

Output: 5V~150mA

Playtime: Up to 8 hours of listening time with full charge (50% volume)

Standby time: Around 80 hours

Bluetooth: V5.2

Bluetooth Protocol: A2DP, AVRCP, HFP

Decoding Format: SBC/AAC/APTX

Bluetooth Distance: >10m

Sensitivity: 105dB +/- 3dB

Frequency response range: 20Hz - 20KHz

Bluetooth Connection



To connect Sirius P5 with your phone or Bluetooth devices, follow steps 1-4.

1. Put Sirius P5 into the case, and screw them tight together.
2. Tear off the protective film on the earbuds, and put earbuds back into the charging case and close the lid, then open the lid to activate the earbuds and turn them on.
3. Turn on Bluetooth on your phone, find GravaStar Sirius P5 on the list, click and connect.
4. Once Bluetooth connects successfully, you will hear the cue tone Bluetooth connected, when you disconnect the Bluetooth, you will hear Bluetooth disconnected.

3

Controls

Press 3s to turn it on

· Answer/Hang off a phone call

· Play or pause

Short press MFB button

· Skip back

· Reject a phone call

Double press on MFB button

· Decrease the volume

Press 1.5s MFB button of Left earbuds

· Activate Voice Assistant

Triple press MFB button of Left earbuds

Press 3s to turn it on

· Answer/Hang off a phone call

· Play or pause

Put the earbuds back to the charging case

· Skip forward

· Reject a phone call

Double press on MFB button

· Increase the volume

Press 1.5s MFB button of Right earbuds

· Switching Gaming mode/ Music mode

Triple press MFB button of Right earbuds

(Cue tone: Music Mode/ Gaming Mode, 48ms latency)

· Fully charged: The light will be green and always on

· Charging: The light will turn red when the battery is less than 30%. When the battery is more than 30%, the light will turn to green color with breathing effect

· Red: Battery is less than 30%

· Green: Battery is more than 30%

· Reset: With earbuds in the charging case and keep the lid open, press 5s on the button of the charging case to reset.

· Single press to change the light color, double press to turn the light off

Indicator light:

· Charging: The light will turn red when the battery is less than 30%. When the battery is more than 30%, the light will turn to green color with breathing effect

· Red: Battery is less than 30%

· Green: Battery is more than 30%

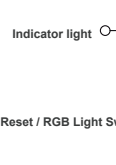
· Reset: With earbuds in the charging case and keep the lid open, press 5s on the button of the charging case to reset.

4

Lights

Indicator light

Reset / RGB Light Switch



Single press to change the light color, double press to turn the light off

Indicator light:

· Charging: The light will turn red when the battery is less than 30%. When the battery is more than 30%, the light will turn to green color with breathing effect

· Red: Battery is less than 30%

· Green: Battery is more than 30%

· Reset: With earbuds in the charging case and keep the lid open, press 5s on the button of the charging case to reset.

· Single press to change the light color, double press to turn the light off

Indicator light:

· Charging: The light will turn red when the battery is less than 30%. When the battery is more than 30%, the light will turn to green color with breathing effect

· Red: Battery is less than 30%

· Green: Battery is more than 30%

· Reset: With earbuds in the charging case and keep the lid open, press 5s on the button of the charging case to reset.

· Single press to change the light color, double press to turn the light off

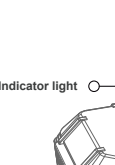
Indicator light:

5

Case Installation

Indicator light

Light transmission part



Single press to change the light color, double press to turn the light off

Indicator light:

· Charging: The light will turn red when the battery is less than 30%. When the battery is more than 30%, the light will turn to green color with breathing effect

· Red: Battery is less than 30%

· Green: Battery is more than 30%

· Reset: With earbuds in the charging case and keep the lid open, press 5s on the button of the charging case to reset.

· Single press to change the light color, double press to turn the light off

Indicator light:

· Charging: The light will turn red when the battery is less than 30%. When the battery is more than 30%, the light will turn to green color with breathing effect

· Red: Battery is less than 30%

· Green: Battery is more than 30%

· Reset: With earbuds in the charging case and keep the lid open, press 5s on the button of the charging case to reset.

· Single press to change the light color, double press to turn the light off

Indicator light:

6

FAQs

Questions

Can't turn on

Can't turn off

Earbuds are not in charging

Can't find earbuds by Bluetooth

Reasons

Battery dead

Misuse or didn't put the earbuds back to the charging case

Dirty of the connecting parts on the charging case or earbuds

Earbuds are not visible for connecting

Solutions

Get earbuds charged

Put the earbuds back to the charging case

Make the connecting parts clean

Follow the steps of Bluetooth connecting to make it visible to the devices.

Warnings

1. Do not disassemble, repair or modify the headset for any reason, otherwise it may lead to fire or even complete damage to the product.

2. Do not place the device in an environment where the temperature is too low or too high (below 0°C or above 40°C).

3. If the earbuds is not used for a long time (more than 2 weeks), please charge it.

4. Must choose the regular manufacturer and the national CCC certified charger.

5. Long time continuous use of earbuds is detrimental to hearing, please control use of time and volume reasonably.

6. The use of earbuds will reduce the perception of external sound, please do not use the earbuds in an environment that may threaten safety.

Notes

1. Please read this instruction manual carefully before using the earbuds and keep it in a safe place.