

# DYNEX™

DX-PNC2019

## Wireless Keyboard/Mouse Combo

v1  
R2

Final flat size: 16.5 × 5.83 in. (419.1 × 148.08 mm)  
Final fold size: 4.125 × 5.83 in. (104.775 × 148.08 mm)

### PACKAGE CONTENTS

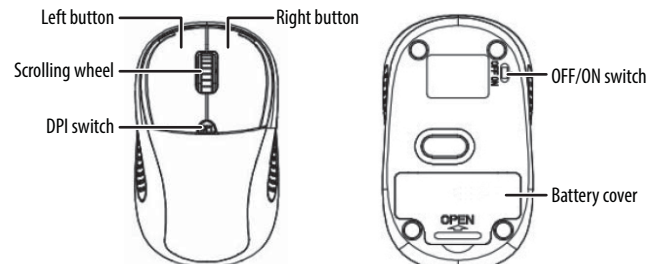
- Wireless keyboard
- AA battery (1)
- Wireless mouse
- AAA batteries (2)
- Nano receiver
- Quick Setup Guide

### SYSTEM REQUIREMENTS

- Windows® 10, Windows® 8.1, Windows® 8, Mac OS 10.X or higher, or Chrome OS
- One available USB port

Before using your new product, please read these instructions to prevent any damage.

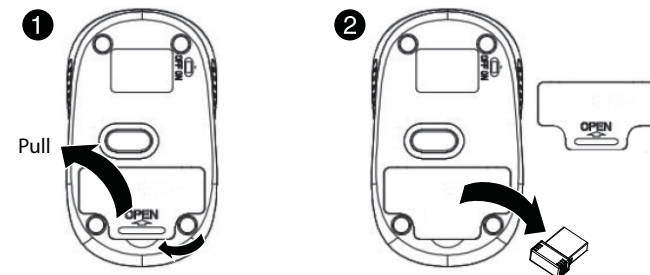
### MOUSE FEATURES



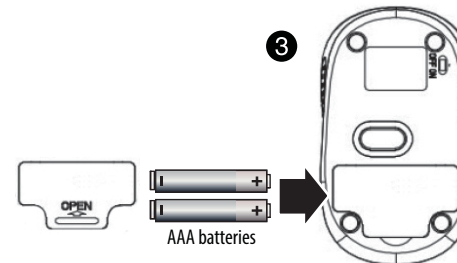
[REVIEWERS: Please verify that there is NO LED indicator on the mouse.  
If there is one, where is it located?] Maetay: Yes, No LED indicator

### INSTALLING THE MOUSE BATTERIES AND REMOVING THE NANO RECEIVER

- 1 Take the battery cover off.
- 2 Remove the nano receiver.



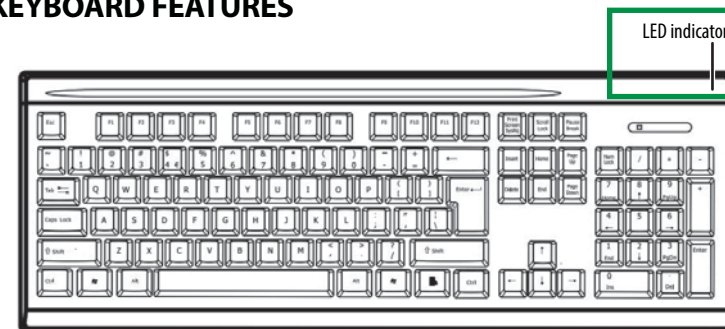
- 3 Insert the included AAA batteries into the battery compartment. Make sure that the + and - signs match the symbols in the compartment.



- 4 Replace the battery cover.

**Tip:** Store the nano receiver in the mouse when it is not in use.

### KEYBOARD FEATURES



### INSTALLING THE KEYBOARD BATTERY

- 1 Take the battery cover off.
- 2 Insert one AA battery (included) into the battery compartment. Make sure that the + and - signs match the symbols in the compartment.
- 3 Replace the cover.

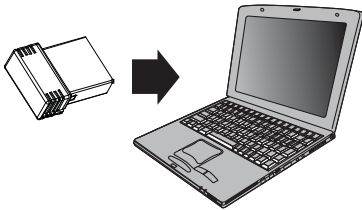
### LED INDICATORS

FUNCTION	DESCRIPTION
<b>Power ON</b>	Red LED is on for 10 seconds, then turns off.
<b>Low battery warning</b>	Red LED blinks for 10 seconds.

## QUICK SETUP GUIDE

## CONNECTING YOUR MOUSE AND KEYBOARD TO YOUR COMPUTER

- 1 Plug the nano receiver into the USB port on your computer.
- 2 Slide the ON/OFF switch on your mouse to **ON**.  
The computer automatically detects the mouse and keyboard and you can immediately begin using them.



### If the mouse or keyboard does not work:

- Re-plug the nano receiver into the USB port on your computer. The LED **indicator on the keyboard flashes** steadily while in pairing mode (10 seconds). After pairing successfully, the LED turns off.
- Check the batteries in your mouse or keyboard. The LED **indicator blinks** for 10 seconds when the batteries are low.

## DPI SWITCH

There are five **(or three?)** available DPI **settings, including 800, 1200 (default), 1600 [REVIEWERS: What are the two other settings?]**

**[REVIEWERS: How does the user know the DPI they are selecting?]**

Maetay: Three available DPI, click DPI buuton toggle

## CLEANING YOUR MOUSE AND KEYBOARD

- Wipe the mouse and keyboard with a damp, lint-free cloth.

## SPECIFICATIONS

### Keyboard:

- Dimension (H×W×D): 6.3 × 17.8 × 1.3 in. (16 × 45.2 × 3.3 cm)
- Weight: 19.7 oz. (560 g)
- Rating: **1.5V 4mA**
- Radio frequency: 2.4 Ghz
- Operating distance: 33 feet (10 meters)
- Key number: 104 keys (US)
- Battery: 1 AA alkaline battery
- Battery life: **about four hours per day**

### Mouse:

- Dimensions (H×W×D): 3.7 × 2.2 × 1.5 in. (9.5 × 5.6 × 3.8 cm)
- Weight: 1.76 oz. (50 g)
- Key number: 4 keys (US)
- Battery: 2 AAA alkaline batteries
- Battery life: **three months about four hours per day**
- Radio frequency: 2.4 Ghz
- Operating distance: 33 feet (10 meters)
- Rating: **3V 8mA**

### Nano receiver:

- Dimension (H×W×D): .6 × .2 × .7 in. (1.4 × .6 × 1.8 cm)
- Weight: .04 oz. (1.1 g)
- Interface: USB 1.1, 2.0, 3.0

## TROUBLESHOOTING

### My mouse or keyboard is not working.

- Make sure that your mouse and keyboard are turned on.
- Move your keyboard and mouse closer to your computer.
- Make sure that your computer meets the system requirements.
- Only use the mouse on a clean, flat, non-slippery surface to ensure smooth and accurate cursor action.
- Avoid using your mouse on reflective, transparent, or metallic surfaces.
- Make sure that your mouse or keyboard and nano receiver are paired by pressing the connect button on the mouse or keyboard.
- Replace the mouse or keyboard batteries.
- Try connecting your nano reciver into a different USB port on your computer.
- Try removing or moving other wireless devices near the computer to prevent interference.

### My mouse pointer or scroll wheel is too sensitive or not sensitive enough.

- Adjust the cursor or scroll wheel settings on your computer. Refer to the documentation that came with your computer.

## LEGAL NOTICES

### FCC Statement

This device complies with Part 15 of the FCC Rules. Operation is subject to the following two conditions: (1) this device may not cause harmful interference, and (2) this device must accept any interference received, including interference that may cause undesired operation.

This equipment has been tested and found to comply with the limits for a Class B digital device, pursuant to Part 15 of the FCC Rules. These limits are designed to provide reasonable protection against harmful interference in a residential installation. This equipment generates, uses, and can radiate radio frequency energy and, if not installed and used in accordance with the instructions, may cause harmful interference to radio communications. However, there is no guarantee that interference will not occur in a particular installation. If this equipment does cause harmful interference to radio or television reception, which can be determined by turning the equipment off and on, the user is encouraged to try to correct the interference by one or more of the following measures:

- Reorient or relocate the receiving antenna.
- Increase the separation between the equipment and receiver.
- Connect the equipment into an outlet on a circuit different from that to which the receiver is connected.
- Consult the dealer or an experienced radio/TV technician for help.

**Warning:** Changes or modifications not expressly approved by the party responsible for compliance could void the user's authority to operate the equipment.

### RSS-Gen & RSS-247 Statement

This device complies with Industry Canada licence-exempt RSS standard(s).

Operation is subject to the following two conditions: (1) this device may not cause interference, and (2) this device must accept any interference, including interference that may cause undesired operation of the device.

Le présent appareil est conforme aux CNR d'Industrie Canada applicables aux appareils radio exempts de licence. L'exploitation est autorisée aux deux conditions suivantes : (1) l'appareil ne doit pas produire de brouillage, et (2) l'utilisateur de l'appareil doit accepter tout brouillage radioélectrique subi, même si le brouillage est susceptible d'en compromettre le fonctionnement.

### RSS-102 Statement

This equipment complies with Industry Canada radiation exposure limits set forth for an uncontrolled environment.

Cet équipement est conforme à l'exposition aux rayonnements Industry Canada limites établies pour un environnement non contrôlé.

## THREE MONTHS LIMITED WARRANTY

For complete warranty, visit [www.dynexproducts.com](http://www.dynexproducts.com).

## CONTACT DYNEX

For customer service call 1-800-926-3020

[www.dynexproducts.com](http://www.dynexproducts.com)

DYNEX is a trademark of Best Buy and its affiliated companies  
Distributed by Best Buy Purchasing, LLC  
7601 Penn Ave South, Richfield, MN 55423 U.S.A.  
©2019 Best Buy. All rights reserved.

**Made in China**