

Mounting options

You can mount the AP to a wall or to a ceiling with a 15/16 in. (24 mm) T-bar, or you can install the AP freestanding on a flat surface.

We recommend that you use a flat Ethernet cable so that the cable fits in the narrow space between the AP and the surface on which it is mounted or placed.

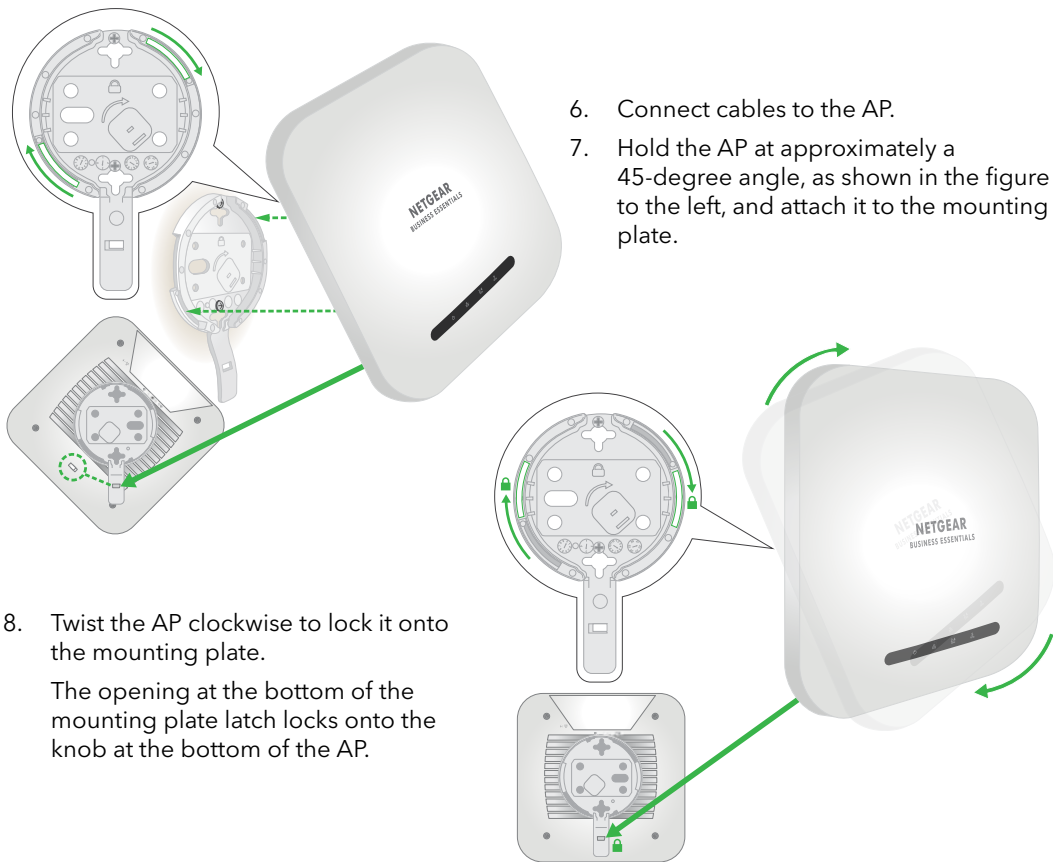
Before you mount the AP, first set up and test the AP to verify WiFi network connectivity.

Mount to a solid wall

CAUTION: Make sure that the wall is not damaged. For example, water damage can destroy a drywall.

1. Place the mounting plate on the wall. The latch on the mounting plate must face downward.
2. Mark the wall where the mounting holes are.
3. Using a 3/16 in. (4.7 mm) drill bit, drill holes in the wall.
4. Tap each anchor into the wall with a soft mallet until the anchors are flush with the wall.
5. Use the screws to attach the mounting plate to the wall.

NOTE: Unless you insert the screws into a wall stud, do not insert the screws into the wall without anchors.

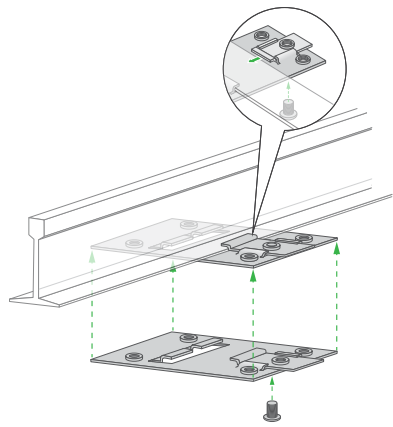


6. Connect cables to the AP.
7. Hold the AP at approximately a 45-degree angle, as shown in the figure to the left, and attach it to the mounting plate.

8. Twist the AP clockwise to lock it onto the mounting plate. The opening at the bottom of the mounting plate latch locks onto the knob at the bottom of the AP.

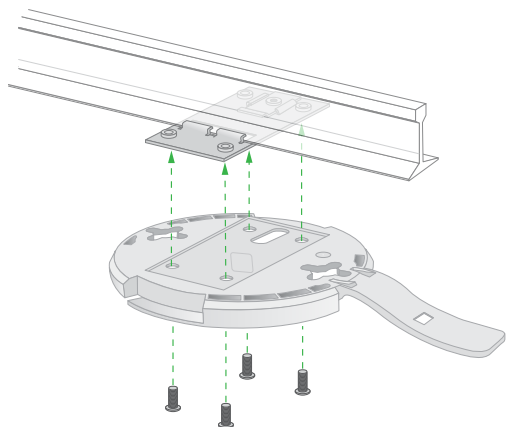
Mount to a T-bar

1. Slide the T-bar partially into the metal bracket.
2. Attach the metal bracket to the ceiling bar.
3. Push the T-bar over the ceiling bar.
4. Use the lock screw to lock the metal bracket into place.

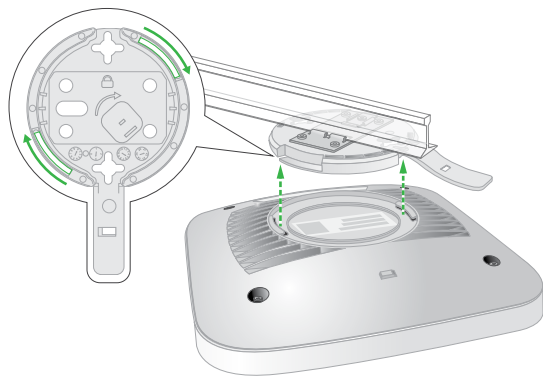


5. Use the four short screws to attach the mounting plate to the T-bar.
6. Connect an Ethernet cable, or both an Ethernet cable and power adapter, to the AP before mounting.

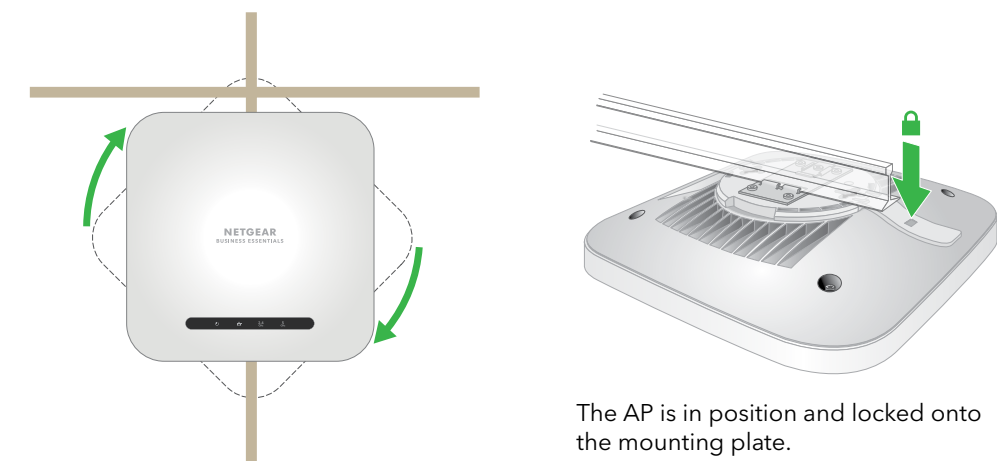
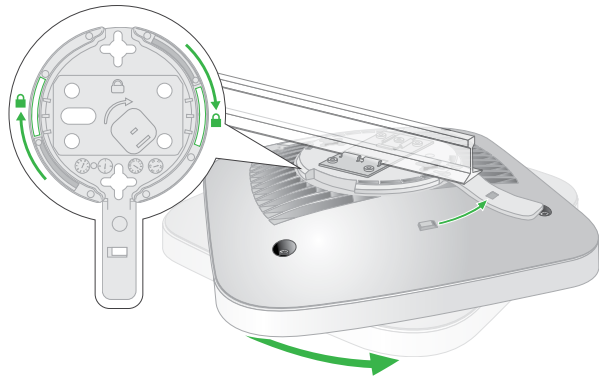
The AP is designed to be unobtrusive, so it sits flat on the ceiling surface when it is mounted.



7. Hold the AP upside down at approximately a 45-degree angle, as shown in the figure to the right, and attach it to the mounting plate. When viewed from the front, the latch points towards the lower left corner of the AP.



8. Twist the access point clockwise to lock it onto the mounting plate. The opening at the bottom of the mounting plate latch locks onto the knob at the bottom of the AP. In final position, the latch points directly towards the center bottom edge of the AP. See the figure to the right, and the figures in the next column.

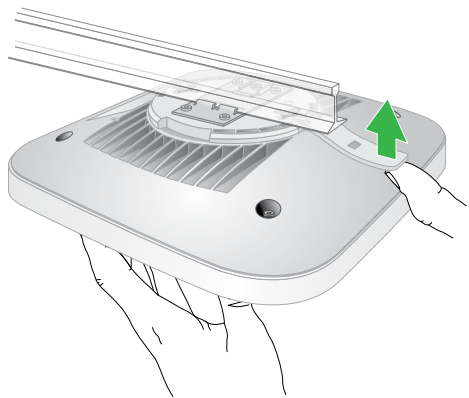


The AP is in position and locked onto the mounting plate.

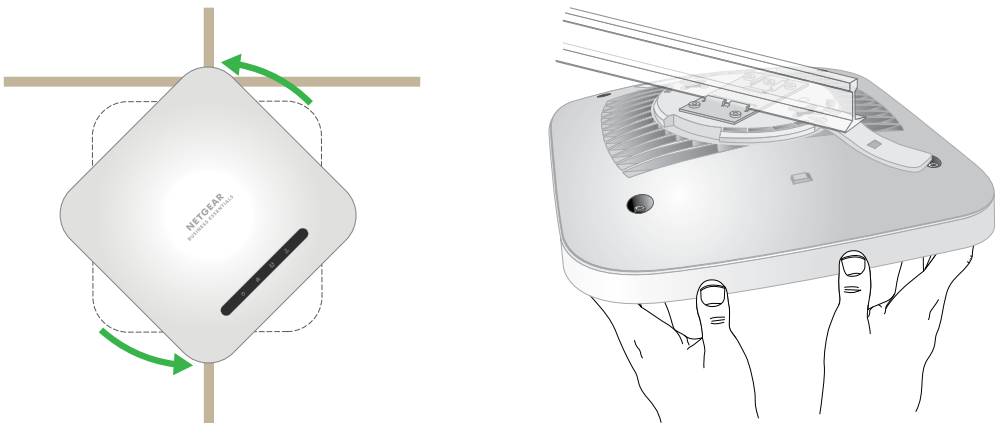
Unmount the AP

CAUTION: Make sure you hold the AP so that it does not drop when you release it from the mounting plate.

1. Place your thumb on the locking latch, located behind the LEDs on opposite side of the AP.
2. Press the latch towards the T-bar or wall to release the lock and keep the lock open.



3. Turn the AP counterclockwise approximately 45 degrees until the AP releases from the mounting plate. The mounting plate remains attached to the T-bar or the wall.



Support and Community

Visit [netgear.com/support](https://www.netgear.com/support) to get your questions answered and access the latest downloads.

You can also check out our NETGEAR Community for helpful advice at community.netgear.com.

Regulatory and Legal

Si ce produit est vendu au Canada, vous pouvez accéder à ce document en français canadien à <https://www.netgear.com/support/download/>.

(If this product is sold in Canada, you can access this document in Canadian French at <https://www.netgear.com/support/download/>.)

For regulatory compliance information including the EU Declaration of Conformity, visit <https://www.netgear.com/about/regulatory/>.

See the regulatory compliance document before connecting the power supply.

For NETGEAR's Privacy Policy, visit <https://www.netgear.com/about/privacy-policy>.

By using this device, you are agreeing to NETGEAR's Terms and Conditions at <https://www.netgear.com/about/terms-and-conditions>. If you do not agree, return the device to your place of purchase within your return period.

Do not use this device outdoors. The PoE source is intended for intra building connection only.

Applicable to 6 GHz devices only: Only use the device indoors. The operation of 6 GHz devices is prohibited on oil platforms, cars, trains, boats, and aircraft, except that operation of this device is permitted in large aircraft while flying above 10,000 feet. Operation of transmitters in the 5.925-7.125 GHz band is prohibited for control of or communications with unmanned aircraft systems.