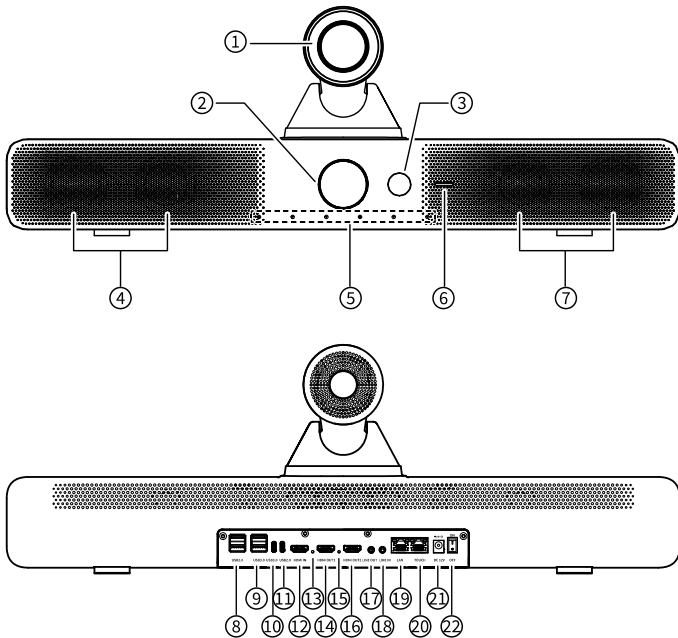


# APS Telehealth Edge Device

## Quick Start Guide

### 1 Appearance and Interface



No.	Interface	Description
1	Camera	40X PTZ camera.
2	Camera	5X fixed focus camera.
3	Compensation Light	Infrared compensation light.
4	Loudspeaker	Loudspeaker1/2.
5	Microphone	Built-in microphones.
6	Indicator	Status indicator.
7	Loudspeaker	Loudspeaker3/4.
8	USB2.0	USB2.0 Type-A interface, connect to an external U-disk, Mouse, Keyboard, Microphone, HD Camera and other USB devices.
9	USB3.0	USB3.0 Type-A interface, connect to an external U-disk, Mouse, Keyboard, Microphone, HD Camera and other USB devices.
10	USB3.0	USB3.0 Type-C interface, connect to an external U-disk, Mouse, Keyboard, Microphone, HD Camera, Computer and other USB devices.
11	USB2.0	USB2.0 Type-C interface, connect to an external U-disk, Mouse, Keyboard, Microphone, HD Camera and other USB devices.
12	HDMI IN	HDMI IN interface, connect to an external HD Camera or PC, support audio input.
13	Firmware Update Button	Short press to enter the download mode after powering on and connecting the firmware flashing cable.

No.	Interface	Description
14	HDMI OUT1	HDMI OUT1 interface, connect to an external HDTV or the other display devices.
15	Reset Button	<ul style="list-style-type: none"><li>Before powering on: Press and hold to power on until the startup logo is displayed, then release it to restore the backup system; Long-press for 10s to restore the backup system.</li><li>When operating normally: Long-press for 3s to restore the factory settings.</li></ul>
16	HDMI OUT2	HDMI OUT2 interface, connect to an external HDTV or the other display devices.
17	LINE IN	3.5mm audio input interface.
18	LINE OUT	3.5mm audio output interface.
19	LAN	LAN interface, connect to the ethernet network.
20	TOUCH	TOUCH interface, connect to an external tablet and other control device.
21	DC 12V	DC 12V power interface.
22	ON/OFF	Power ON/OFF switch.

### 2 Installation and Connection



**Warning**

Operating this equipment in a residential environment may cause radio interference.

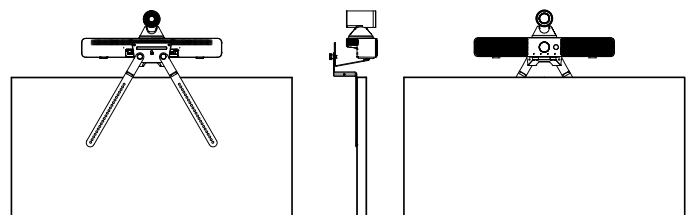
#### 2.1 Installation

The terminal can be placed on horizontal desktop or installed on TV/wall with bracket.

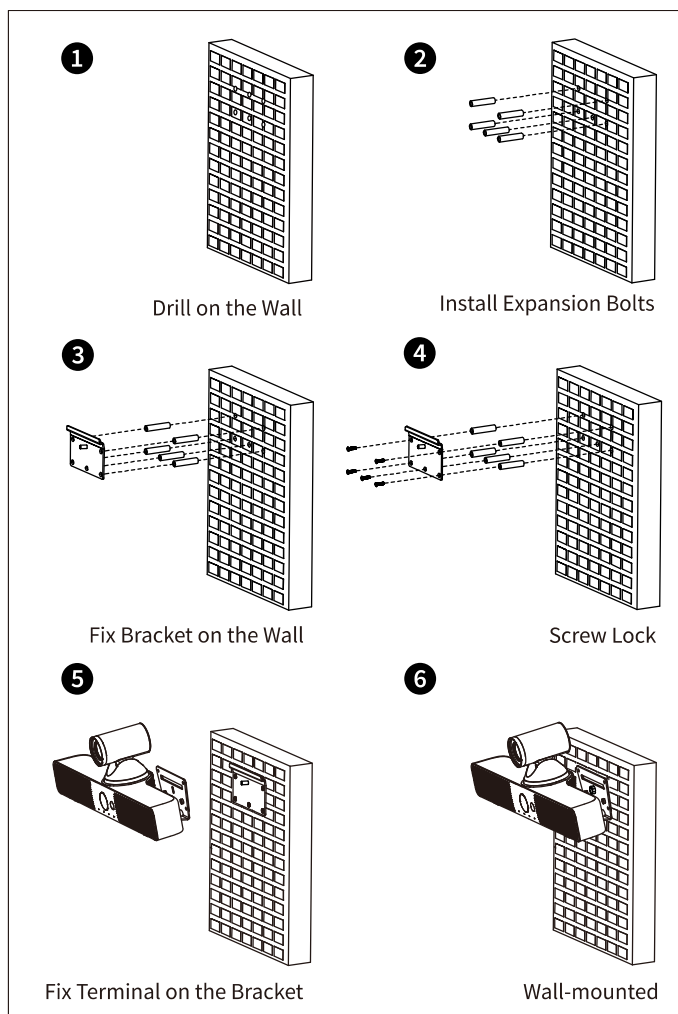
##### Desktop Installation

Place the terminal on the desktop, keep the desktop stable and pay attention to the anti-slip footpads.

##### Install on TV with Bracket

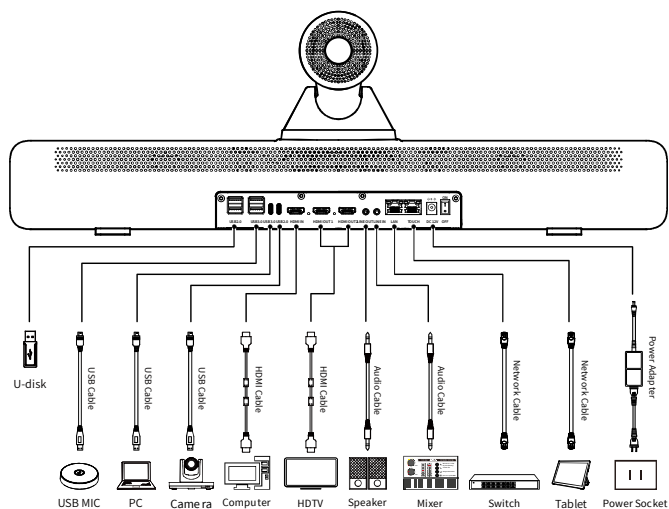


## Install on Wall with Bracket



## 2.2 Connection

The cable connections shown in the following figure contains optional configurations and for reference only. Please connect the cables according to actual needs.



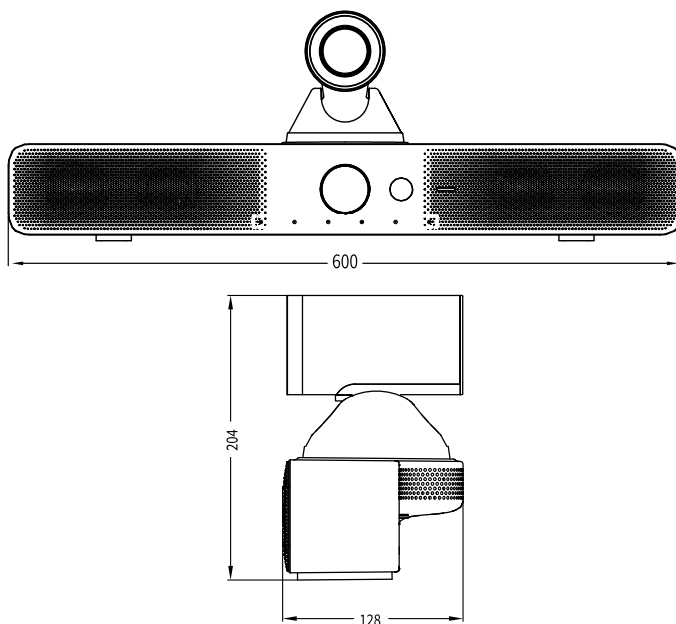
Configuration as follow:

- The First Video Stream Input: 40X PTZ camera and 5X fixed focus camera.
- The Second Video Stream Input: Connect the HD Camera or the second video stream to the HDMI IN interface via an HDMI cable.

- The Third Video Stream Input: Connect the HD Camera or the third video stream to the USB interface via a USB cable.
- Audio Input: Connect a USB Microphone to the USB interface via a USB cable; Or, connect the PC or telephone audio source to the LINE IN interface via a 3.5mm audio cable.
- Audio Output: Connect an HDTV to the HDMI OUT1/2 interface via an HDMI cable; Or, connect a Loudspeaker to the LINE OUT interface via audio cable.
- The First Video Stream Output: Connect an HDTV to the HDMI OUT1 interface via an HDMI cable.
- The Second Video Stream Output: Connect an HDTV to the HDMI OUT2 interface via an HDMI cable.
- Network: Connect the Ethernet Network via a network cable.
- Power Supply: Connect the Terminal to the power outlet via the supplied power adapter.

## 3 Product Dimensions

Unit: mm



## 4 Cleaning Guide

- Wipe the device with a soft brush or clean soft cloth.
- For disinfecting take a clean soft cloth, dip it in Ethyl Alcohol Absolute, and gently wipe the device.

### Cleaning Precautions

- Never use a caustic or abrasive cleaners.
- Never touch the camera lens or move the camera.
- Never let any liquids get into any port openings, microphone, or speaker openings.

\*(Although this device has passed the corrosion resistance test of chemical reagents, for the long-term cleaning and maintenance of APS device, it is recommended to use Ethyl Alcohol Absolute for cleaning.)

## 5 Important Safety Instructions

---

Warning statement that addressed the HAZARDS the MD EQUIPMENT.

- The MD EQUIPMENT has no serviceable parts.
- Do not to position the MD EQUIPMENT in a manner that makes it difficult to unplug the device.
- Use the power switch to power the device off.
- Unplug the power cord or AC adapter if damaged.
- Do not leave the equipment in an uncontrolled environment where the storage temperature is below -20 °C (-4 °F) or above 60 °C (140 °F) and the relative humidity is below 30% or above 75%, this may damage the equipment.

## 6 FCC Compliance Statements

---

This device complies with Part 15 of the FCC Rules. Operation is subject to the following two conditions: (1) this device may not cause harmful interference, and (2) this device must accept any interference received, including interference that may cause undesired operation.



**Note:** This equipment has been tested and found to comply with the limits for a Class B digital device, pursuant to Part 15 of the FCC Rules. These limits are designed to provide reasonable protection against harmful interference in a residential installation. This equipment generates, uses and can radiate radio frequency energy and, if not installed and used in accordance with the instructions, may cause harmful interference to radio communications. However, there is no guarantee that interference will not occur in a particular installation.

If this equipment does cause harmful interference to radio or television reception, which can be determined by turning the equipment off and on, the user is encouraged to try to correct the interference by one or more of the following measures:

- Reorient or relocate the receiving antenna.
- Increase the separation between the equipment and receiver.
- Connect the equipment into an outlet on a circuit different from that to which the receiver is connected.
- Consult the dealer or an experienced radio/TV technician for help.

**Caution:** Changes or modifications not expressly approved by the party responsible for compliance could void the user's authority to operate the equipment.

This equipment complies with FCC radiation exposure limits set forth for an uncontrolled environment. This equipment should be installed and operated with minimum distance 20cm between the radiator and your body.

## 7 ISED Compliance Statements

---

This device contains license-exempt transmitter(s)/receiver(s) that comply with Innovation, Science and Economic Development Canada's licence-exempt RSS(s). Operation is subject to the following two conditions: (1) This device may not cause interference. (2) This device must accept any interference, including interference that may cause undesired operation of the device. L'émetteur/récepteur exempt de licence contenu dans le présent appareil est conforme aux CNR d'Innovation, Sciences et Développement économique Canada applicables aux appareils radio exempts de licence. L'exploitation est autorisée aux deux conditions suivantes : (1) L'appareil ne doit pas produire de brouillage; (2) L'appareil doit accepter tout brouillage radioélectrique subi, même si le brouillage est susceptible d'en compromettre le fonctionnement.

This equipment complies with IC RSS-102 radiation exposure limits set forth for an uncontrolled environment. This equipment should be installed and operated with minimum distance 20cm between the radiator and your body.

Cet équipement est conforme aux limites d'exposition aux radiations IC CNR-102 établies pour un environnement non contrôlé. Cet équipement doit être installé et utilisé avec une distance minimale de 20cm entre le radiateur et votre corps.

- The device for operation in the band 5150-5250 MHz is only for indoor use to reduce the potential for harmful interference to co-channel mobile satellite systems;
- The maximum antenna gain permitted for devices in the band 5725-5825 MHz shall comply with the e.i.r.p. limits specified for point-to-point and non point-to-point operation as appropriate.
- les dispositifs fonctionnant dans la bande 5150-5250 MHz sont réservés uniquement pour une utilisation à l'intérieur afin de réduire les risques de brouillage préjudiciable aux systèmes de satellites mobiles utilisant les mêmes canaux;

Le gain maximal d'antenne permis (pour les dispositifs utilisant la bande 5725-5825 MHz). doit se conformer à la limite de p.i.r.e. spécifiée pour l'exploitation point à point et non point à point, selon le cas.

## 8 EMC Guidance

**Warning:** Don't use near active HF surgical equipment and the RF shielded room of an ME system for magnetic resonance imaging, where the intensity of EM disturbances is high.

**Warning:** Use of this equipment adjacent to or stacked with other equipment should be avoided because it could result in improper operation. If such use is necessary, this equipment and the other equipment should be observed to verify that they are operating normally.

**Warning:** Use of accessories, transducers, and cables other than those specified or provided by the manufacturer of this equipment could result in increased electromagnetic emissions or decreased electromagnetic immunity of this equipment and result in improper operation.

**Warning:** Portable RF communications equipment (including peripherals such as antenna cables and external antennas) should be used no closer than 12 in (30 cm) to any part of the equipment, including cables specified by the manufacturer. Otherwise, degradation of the performance of this equipment could result.

Guidance and Manufacturer's Declaration – Electromagnetic Emissions	
Emissions test	Compliance
RF emissions CISPR 11	Group 1
RF emissions CISPR 11	Class B
Harmonic emissions IEC 61000-3-2	Class A
Voltage fluctuations/ flicker emissions IEC 61000-3-3	Complies

## 9 Product Specifications



You should now recycle your waste electrical goods and in doing so help the environment. This symbol means an electrical product should not be disposed of with normal household waste. Please ensure it is taken to a suitable facility for disposal when finished with.



Hereby, Caregility declare that the radio equipment type the APS device is compliance with Directive 2014/53/EU.



The equipment has passed IEC certification entries, and CB mark is allowed to be added legally.



Users are recommended to read this manual before using this device.

### Operating Environment:

Temperature: 0°C ~ 40°C

Relative Humidity: 10% ~ 80% R.H.

Atmospheric Pressure: 80kPa ~ 106kPa

### Storage Environment:

Temperature: -20°C ~ 60°C

Relative Humidity: 30% ~ 75% R.H

Atmospheric Pressure: 70kPa ~106kPa;

### Product Information:

Manufacturer Name: Caregility

Manufacturer Address: 1350 Campus Parkway, Suite 201 Wall

Township, NJ 07753, United States of America

Adapter: It is part of ME equipment

Device Input: 12V  5A

Power Input: AC100-240V~50/60Hz 1.5A

Infrared Light: Wave crest 850nm, optical power 550mW (Typ)

Intended Use: The APS device is intended to provide two-way video and audio between the remote clinician and the patient bedside.